

Standard Equipment

PARTIAL LIST - See Brochure for Full Listing Of Many Additional Standard Value Features

Metal drawer guides w/nylon rollers
 Oak raised cathedral panel doors, drawers & refer front
 Oak facer main level slide-out
 Xenogen lights w/dinette
 Armstrong laminated plank floor @ kitchen
 Upgrade Armstrong "Tough Guard" linoleum @ bath
 Padded vinyl interior ceiling
 Corian countertops
 Overhead cabinets in slide outs above sofa
 Enclosed heated & insulated holding tanks w/separate heat duct
 Enclosed heated termination valves
 Winegard™ TV antenna w/built-in power booster
 Dual 30# LP gas bottles w/auto change over
 Full systems monitor panel
 Heavy Duty 75 amp solid state converter
 Holding tank evacuation system
 Black water holding tank flush
 10 gal. gas/electric water heater w/DSI
 15,000 BTU ducted air conditioner w/remote - Carrier™
 Centralized electrical compartment
 Alum const sidewalls & 5" alum trussed roof on 16" centers
 Heavy Duty rack & pinion slide-out system w/flush floor
 5/8" tongue & groove plywood floors
 Dual insulated floor design double vapor barrier
 Fully-enclosed frame w/Polyflex™ underbelly
 5" roof, one of the thickest & strongest in industry
 One-piece TPO vinyl roof w/3" crown
 Spare tire - crankdown
 Rear stabilizing jacks
 Drop frame construction w/taller storage area
 Electric front jacks
 Aluminum wheels
 LP Leak Detector / Smoke Detector
 Automotive paint w/clearcoat finish on rocker panels
 Gelcoat fiberglass exterior sidewalls w/ 1 pc. front & rear caps
 Diamond Plate front gooseneck and baggage door
 Flush mount baggage doors
 Rear ladder
 Courtesy light @ sewer hook-up
 Cable TV & phone hookup
 Sony AM/FM/CD/DVD Home Theater System 5.1 w/subwoofer
 24" Sony Wega TV
 Video Control Center
 Norcold N-821 Refrigerator w/oak door fronts
 High output 3-burner range w/oven
 Microwave w/built-in range hood vent
 Pull-out food pantry drawers
 Oak dinette table w/expandable leaf, 4 chairs w/storage seat
 Acrylic deep double bowl kitchen sink w/2 covers
 Lift-off faucet w/spray
 Countertop extension - fold down (some models)
 Hide-A-Bed sofa w/pillows
 Euro Swivel recliner w/foot stool
 Durable one-piece gelcoat fiberglass bath tub & walls
 Decorator shower enclosure w/towel bar
 Light bar - medicine cabinet
 Queen bed w/bedspread and pillows
 Accent prism lights @ each side of bed
 Queen bed w/quilt top mattress (some models)
 Battery shut-off switch
 Bedroom slide-out
 Ceiling Fan
 Day/night shades
 Pull-out grab handle @ entry
 2 Scare lights
 Satellite prep
 Snap pins @ front jacks
 Porcelain toilet w/hand sprayer
 Towel bar/hamper
 Washer/Dryer prep w/50 amp marine power cord
 GL-20 tinted glass
 Carefree patio awning
 Sewer hose carrier built-in
 Vinyl-Acrylic Awning

Carriage

CARRI-LITE

P.O. Box 246 Millersburg, IN 46543 (574) 642-3622

Product	CARRI-LITE	Model Year	2006
Type	FIFTH WHEEL		
Model/Color	CL36KSO	EUCALYPTUS	
Serial Number	16F62C5R261B16206		
Manufacturer's Suggested Retail Price - Base	73,425.00		

Optional Equipment

- 600110 CARRI-LITE BEST BUILT PACKAGE:
NEV-R-LUBE AXLES, MOR/RYPDE RE RUBBER EQUALIZER SYSTEM, GREASEABLE SHACKLES, EXTERIOR SHOWER, 40# LP BOTTLES W/AUTO CHANGE OVER, 110V RECEPT IN BASEMENT (DS), TV OUTLET IN BASEMENT (DS) REAR SECOND BASEMENT
- 600111 CARRI-LITE LUXURY PACKAGE:
24" SONY WEGA FLAT SCREEN TV, SONY AM/FM CD/DVD HOME THEATRE SYSTEM 5.1 WITH SUBWOOFER, FLOOR SAFE, PILLOW TOP MATTRESS, WATER PURIFIER, EURO SWIVEL RECLINER WITH FOOT STOOL, XELOGEN LIGHTING WITH DIMMER SWITCHES, CARPET RUNNER AT SHOWER, DECORATIVE MIRROR AND COAT HOOKS
- 600205 WOOD DÉCOR: HONEY MAPLE
- 690050 SLIDE-OUT ARIZONA ROOM
- 610031 A/C: 13,500 BTU—BEDROOM
- 680006 FANTASTIC VENT W/WALL SWITCH @ KITCHEN
- 630010 SOLAR PANEL PREP (12V, 10 GA.)
- 680060 CENTRAL VACUUM SYSTEM
- 620083 2 1/2" BRAKES
- 620071 MOR/RYPDE PIN BOX
- 620036 FRONT JACKS: SEPARATE MOTOR & SWITCH
- 620301 SLIDE-OUT BATTERY TRAY
- 620302 SLIDE-OUT LP TRAY
- 620303 SLIDE-OUT CARGO TRAY
- 630025 HPL FLOORING @ KITCHEN AREA
- 690054 OMEGA CUTTING BOARD/WORK CENTER
- 680023 MICROWAVE: CONVECTION
- 680039 REFER: NORCOLD SIDE BY SIDE
- 699980 RVING COALITION FEE

RV 6679

Options	12,143.00
Base Vehicle Total	85,568.00
Destination Charge	2,242.00
Subtotal	87,810.00
Dealer Prep	_____
Other	_____
Total Amount	\$87,810.00

Carriage, Inc. reserves the right to change price and specifications without notice. Total Amount does not include state and local taxes or license fees.

2006 CARRI-LITE FIFTH WHEEL SPECIFICATIONS

- Slide-out battery tray
- Slide-out LP bottle tray
- Slide-out cargo tray @ main storage area

ENTERTAINMENT

STANDARD FEATURES

- Residential style entertainment center
- Television 24" Sony Wega
- Sony AM/FM/CD/DVD Home Theater System 5.1 with subwoofer
- Cable TV hookup
- Phone jack (2)
- Satellite prep (RG-6 cable)
- Desk @ E-center

OPTIONS

- TV slide & swivel (N/A angled "E" centers)

KITCHEN

STANDARD FEATURES

- Corian counter tops
- Countertop extension (where applicable)
- Acrylic deep double bowl sink w/2 covers
- Lift-off faucet
- Water purifier w/separate faucet

- Flip down accessory drawer
- Bi-fold range cover
- Full pantry slide out drawers
- Oak dinette table w/expandable leaf & 4 chairs
- Microwave w/turn table and built-in hood vent
- Refrigerator: Norcold N821 (2 door, gas/electric 8 ft.)
- w/raised panel wood doors
- Decorative mirror with coat hooks

OPTIONS

- Microwave oven (convection)
- Platinum Package (Stainless Steel-look microwave, refer,sealed burner range)
- Range: 3 burner (hi-output)
- Cook top w/doors below IPO oven
- Refrigerator 4 door: Norcold 1200LR (N/A some models)
- Refrigerator: 10' Norcold
- Omega cutting board w/work center

LIVING ROOM

STANDARD FEATURES

- Euro swivel recliner w/foot stool - Leather
- 6' 2" slide-out height - main slide-outs

- Free standing end table w/ magazine rack
- Hide-A-Bed sofa w/pillows
- Thicker higher density foam in all furniture
- Slide-out keyboard tray @ desk (36CK3 & 36XTRM5)
- Ceiling fan
- Chair @ desk, w/knee holes

OPTIONS

- Recliner: Swivel w/"Rock 'n Lock mechanism - Carrara
- Fireplace (N/A 32RS3 & 34KS3)

BATHROOM

STANDARD FEATURES

- Full size 1pc fiberglass shower
- Acrylic sink in bathroom
- Spacious walk through bathroom
- Brushed nickel light bar - medicine cabinet
- Oversized medicine cabinet w/ extra large mirror
- Porcelain stool
- Towel bar
- Shower bubble w/shade (16 x 24)
- Drawer storage @ vanity
- Carpet runner @ shower

OPTIONS

- Garden tub Ipo shower (where available)

BEDROOM

STANDARD FEATURES

- Piston lift queen bed w/felt lining (32RS3 only)
- Pillow top queen mattress
- Duvet cover w/pillows
- Accent prism lights - 2 each side of bed
- Privacy door in bedroom
- Stand-up bedroom w/6' head room
- Bedroom night stand(s)
- Clothes hamper - built in
- Cedar lined wardrobes
- Drawer under bed (all suite models)
- Floor safe
- Bedroom bench (34KS3 & 36KS3)

OPTIONS

- King bed (34KS3, 36KS3)

CARRI-LITE	CL 32RS3	CL 34KS3	CL 36KS3	CL 36KSQ	CL 36KIQ	CL 36XTRM5	CL 36SLX5
Approx. Exterior length	32' 11"	34' 11"	36' 11"	36' 11"	36' 11"	36' 11"	36' 11"
Approx. Exterior width	100"	100"	100"	100"	100"	100"	100"
Approx. Exterior Height w/AC1	12' 8"	12' 8"	12' 8"	12' 8"	12' 8"	12' 8"	12' 8"
Approx. Dry Axle Weight (lb)*	9,490	10,225	10,510	10,665	10,580	11,045	11,330
Approx. Hitch Weight (lb)*	2,270	2,435	2,550	2,735	2,745	2,830	2,570
Approx. Total Dry Weight (lb)*	11,760	12,660	13,060	13,400	13,325	13,875	13,900
Approx. Average Load Capacity (lb)*	2,678	3,775	3,490	3,335	3,420	2,955	2,670
Axles (number of)	2	2	2	2	2	2	2
Fresh Water Capacity w/ water heater**	82 Gal.	82 Gal.	82 Gal.	82 Gal.	82 Gal.	82 Gal.	82 Gal.
Black/Gray Holding Tank Capacity	38/72 Gal.	38/72 Gal.	38/72 Gal.	38/72 Gal.	38/72 Gal.	38/72 Gal.	38/72 Gal.

* Above listed weights are actual units that include all slide out rooms and all popular options ordered on most coaches. These weights are provided as a guideline only. The actual weight of each individual unit (all units are weighed as they come off the production line) is posted inside each vehicle.

** Fresh water capacity includes the combined capacity of the fresh water tanks and the water heater.



Carriage

CARRI-LITE



Visit our Website.

www.carriageinc.com

Post Office Box 246 • Millersburg, Indiana 46543 • (574) 642-3622

© 2006 Carriage, Inc. Printed in U.S.A.

COPPER INTERIOR

EUCALYPTUS INTERIOR

MOSS INTERIOR



SOFA



RECLINER



SOFA



RECLINER



SOFA



RECLINER



DINETTE



BED SPREAD



DINETTE



BED SPREAD



DINETTE



BED SPREAD



BEDROOM ACC



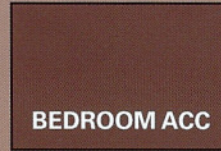
CARPET



BEDROOM ACC



CARPET



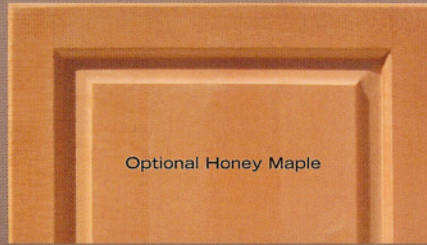
BEDROOM ACC



CARPET



Standard Merit Oak



Optional Honey Maple



Optional Natural Maple



CARRI-LITE MODEL 36KSQ IN MOSS DECOR

2006 CARRIAGE CARRI-LITE



CARRIAGE EXCLUSIVE WARRANTY
THE BEST WARRANTY AVAILABLE PERIOD.



THIS IS THE BEST WARRANTY IN THE RV
INDUSTRY. NO EXCLUSIONS FOR FULL TIMERS.
UNLIKE OUR COMPETITION, WE WANT YOU TO
ENJOY OUR COACHES YEAR-ROUND.

CARRIAGE USES QUALITY COMPONENTS FROM THESE MANUFACTURERS:



YOUR LOCAL CARRIAGE DEALER:



POST OFFICE BOX 246
MILLERSBURG, INDIANA 46543
(574)-642-3622
WWW.CARRIAGEINC.COM



INDUSTRY LEADING SIXTH TIME QUALITY CIRCLE AWARD WINNER

Carriage Inc. received its industry leading sixth (6) Quality Circle Award in December 2004. Dealer Satisfaction in areas such as sales, product management, and service/warranty support. It is in these products, that are designed and built by our outstanding groups of employees, that makes this award possible. We are most proud of this recognition, because it is voted on by our dealer body, not industry peers.

Due to continual improvement of Carriage Inc. products, we reserve the right to change material, colors, specifications and prices at any time without prior notification. Selected decorator items used in the photos are not part of the product, Carriage, Inc. assumes no responsibility for any error in type or print reproduction of specifications or color in this brochure.

2006 CARRIAGE CARRI-LITE



CARRI-LITE MODEL 36XTRM5 IN COPPER DECOR

When you're ready to call it a night, do it in style in the bedroom suite. Not only will you sleep better, but you'll also wake up refreshed and ready to tackle another day. The bedroom suite has a spacious wardrobe including numerous drawers and storage compartments to handle your personal belongings.



CARRI-LITE MODEL 36SLX5 IN EUCALYPTUS DECOR

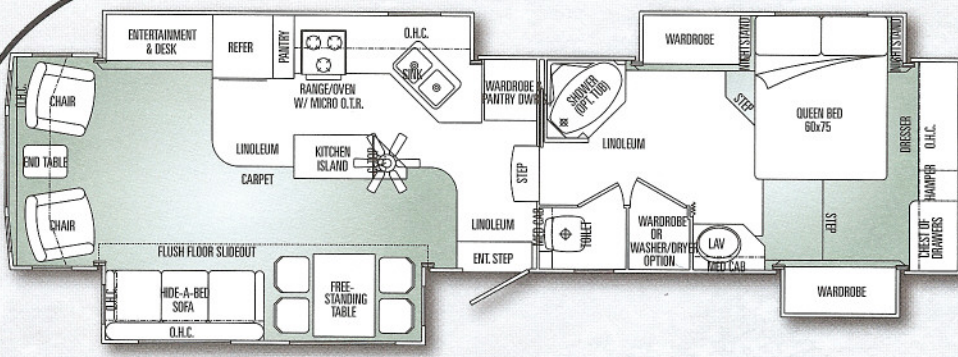
Carriage

CARRI-LITE

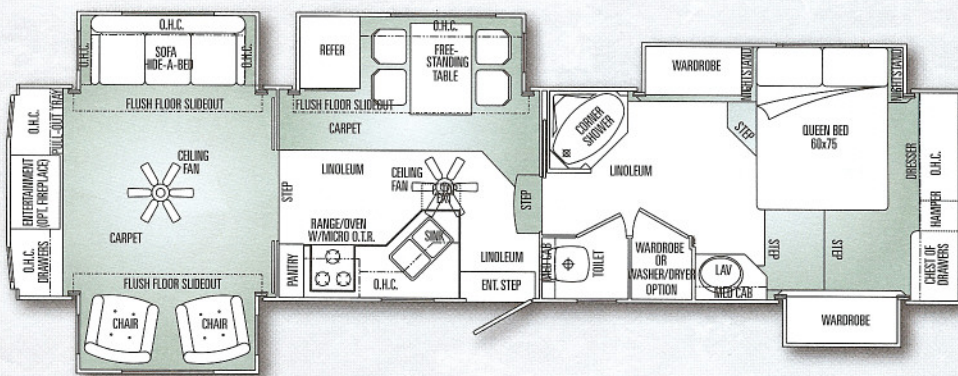
This one

2006 CARRI-LITE FIFTH WHEEL FLOORPLANS

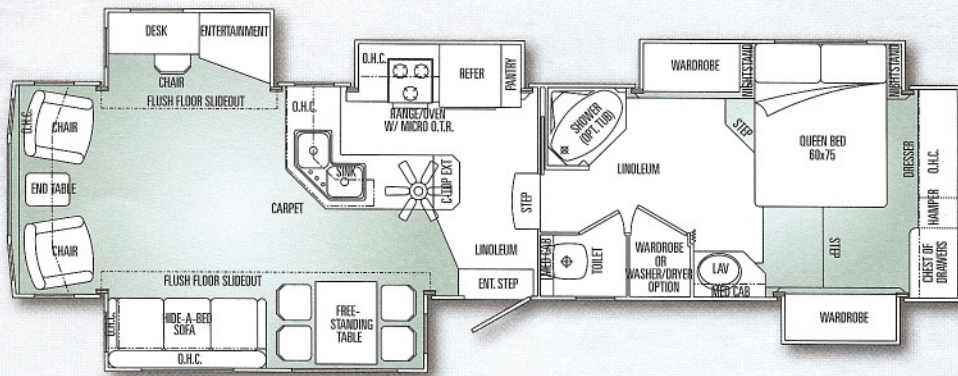
*Susan
& Rick's*



36Ksq



36SLX5



36XTRM5

Carriage

CARRI-LITE

2006 CARRI-LITE FIFTH WHEEL SPECIFICATIONS

STANDARD PACKAGES

"BEST BUILT" PACKAGE

- Nev-R-Lube axles
- MOR/ryde RE rubber equalizer system
- Greaseable shackles
- Exterior Shower
- 40# LP bottles w/auto change over
- 110V recept in basement (DS)
- TV outlet in basement (DS)
- Rear second basement (60 cubic feet)

"LUXURY" PACKAGE

- 24" Sony Wega flat screen TV
- Sony AM/FM/CD/DVD Home Theatre System 5.1 w/subwoofer
- Floor safe
- Pillow top mattress
- Water purifier
- Euro swivel recliners w/foot stool
- Three zone Xelogen lighting w/dimmer switches
- Carpet runner at shower
- Decorative mirror & coat hooks

INTERIOR

STANDARD FEATURES

- Residential carpet w/pad throughout
- Armstrong® Tuffgaurd Linoleum @ kitchen and bath (Includes entrance on some models)
- Oak raised panel doors & drawers (Cathedral style)
- Brushed Nickel hardware on all cabinet doors/drawers
- Metal drawer guides w/nylon rollers
- Designer window treatments throughout
- Oak facer main level slide-out
- Ceiling – Soft touch vinyl
- Crown molding at ceiling, Kitchen & living room
- Chair @ desk (where applicable)
- Overhead cabinet in slide-outs above sofa
- Xelogen lighting @ kitchen overhead cabinets
- Dressing mirror on sliding door @ bath area
- Day/night shades
- Wood grab handle

- Merit oak cabinetry

OPTIONS

- Armstrong® HPL plank floor @ kitchen (Includes entrance on some models)
- Decorator kit
- Natural Maple cabinetry
- Honey Maple cabinetry
- Central Vacuum System
- Arizona Room Slideout (N/A 32RS3)
- Black-Out Day/Night shades
- Fireplace (N/A 32RS3 & 34KS3)

SYSTEMS

STANDARD FEATURES

- 12V interior lights
- Xelogen lights w/dimmer in living room, kitchen, & bedroom ceilings
- 12V lights in exterior storage compartments
- 12V entrance step light
- 12V light @ hitch
- 12V power vent in bathroom and stool room
- Winegard® TV antenna w/built-in power booster
- TV jacks in living room & bedroom
- Large capacity holding tanks
- Enclosed heated & insulated holding tanks & valves w/separate heat duct
- Holding tank evacuation system
- Large capacity fresh water tank
- Black water holding tank flush kit
- Monitor panel (full systems)
- Sewer hose carrier (built-in)
- Water system (demand large capacity)
- Water system hook-up (direct city)
- Water heater by-pass kit
- Furnace Suburban™ (pilotless) 35,000BTU (32'),
- 42,000BTU (34' and up)
- 10 gal. gas/electric water heater w/DSI
- 15,000 BTU ducted air conditioner – Carrier™
- Prep for 2nd A/C bedroom
- 50 amp marine power cord
- Washer/dryer prep. w/plumbing cover (N/A 32RS3)
- Battery shut-off switch
- 50 amp electrical service
- Heavy duty 75 amp solid state converter
- Dual 40# LP gas bottles w/automatic change over
- 12V LP leak detector
- CSA fire extinguisher/smoke detector
- CO detector

OPTIONS

- 15,000 BTU ducted air conditioner w/heat pump – Carrier™
- Roof vent – power (extra)
- Fantastic® Vent w/wall switch
- Fantastic® Vent w/thermostat & rain sensor
- 12V battery installed
- Generator prep (auto change over)
- Generator Onan 5,500 watt Marquis Gold
- Solar panel prep
- Washer/dryer: Sense Clean DD Combo
- Washer/dryer: Kenmore 2 pc

CONSTRUCTION/SAFETY & RUNNING GEAR

STANDARD FEATURES

- 100" wide body width
- All climate insulated (engineered for full-time use)
- Enclosed underbelly w/R-14 fiberglass in-frame insulation, plus R-7 fiberglass insulation in floor. Composite "R" factor for floor R-24
- R-14 fiberglass insulation in roof. Composite "R" factor R-17
- Fully enclosed frame w/heated tanks
- Exclusive drop frame construction
- Painted frame w/stacked 2" x 12" 11 ga. Steel mains
- 5/8" tongue & groove plywood floor
- Aluminum main floor construction W/1 1/2 x 2 1/2 joist on 16" centers
- Dual insulated floor design with double vapor barrier
- Fully insulated main floor and frame for double insulation protection
- Full 2" aluminum sidewalls w/box tube welded both sides
- Fully decked roof (1/2" plywood)
- 5" aluminum trussed roof 16" oc
- Flush floor on main slide out room
- Heavy duty 12V rack & gear slide-out system
- Fully insulated 2" slide-out floors (R-8)
- Front electric power jacks
- Two rear stabilizing jacks
- Snap pins @ front jack legs
- Dexter Axles w/2" x 12" brakes
- Nev-R-Lube axles
- MOR/ryde® RE (rubber equalizer) suspension
- Greasable shackles
- Double heavy duty leaf spring suspension
- Adjustable spring hangers
- Eight-lug wheels & radial tires

- Spare tire & wheel recessed
- Shock absorbers @ all wheels
- 16" tires & wheels 32' LT235/85R16 "E" range
- 34' and up - LT235/85R16 "G" range

OPTIONS

- Dexter axles w/2 1/2" brake system – ventilated
- Front jacks w/separate motors & switches
- Hitch: 20,000 Reese
- MOR/ryde pin box

EXTERIOR

STANDARD FEATURES

- Custom molded one piece front and rear gelcoat fiberglass caps
- Gelcoat fiberglass exterior sidewalls
- Painted rocker panels w/automotive clearcoat finish
- Automotive style bumper
- Diamond Plate Front Gooseneck
- Mid ship turn signals
- One piece vinyl TPO roof
- Awning rail w/gutter & down spouts
- Carefree patio awning
- Prep for electric awning
- Slider windows @ ends of living area SO room
- Escape window (bedroom)
- GL20 solar tinted safety glass windows
- Flush mount baggage doors
- Basement storage w/2-4 access doors w/12V lights
- Large 32 cubic foot front compartment for generator
- Storage shelves/hose rack in front gen. compartment
- Felt lined exterior compartments
- Pullout grab handle @ entry door
- Dead bolt door lock
- Breakaway switch
- Exhaust vent in stool room
- Patio light – 12V
- 110V exterior recept (GFI)
- Courtesy light @ sewer hook-up
- Scare lights (2)
- 110V recept in basement (DS)
- TV outlet in basement (DS)
- Exterior shower
- "Big Easy" triple entrance steps w/non-slip grips

OPTIONS

- Dual pane windows (w/GL20 tinted glass)
- Rear sunshade (bay window models)
- Man/Elect. Box awning
- Accessory receiver w/bike rack