



S I G N A T U R E S E R I E S 2 0 0 1

Every day
is a new destination.

Where will the **2001**
Signature take you?

Where will you be tomorrow?

Life on the road is lived richly, because every day brings something new. A new highway. A new city. A new sunset, a new dawn. A new mountain, prairie, desert or shore. New adventures, new discoveries. New faces, and new meetings with old friends.

The joy of owning a new Signature Series motorhome by Monaco is that wherever you go, you're exactly where you'd want to be. The Signature Series' advanced chassis engineering and ergonomic cockpit design make 400-mile days a pleasure. If a rainy day keeps you inside, you can bask in the sinful luxury of the finest, most livable coach Monaco has ever offered. Time for adventure? You have the size, space and power to take along everything you need.

On the other hand, some things shouldn't be an adventure. Like service. That's why Monaco does things for you nobody else does. So you can feel secure with your decision—and your motorhome—wherever your journey takes you.

So, for your next adventure, may we suggest you spend a little time in a new Signature Series at your Monaco dealer's? Take it for a drive. Explore it end to end. Sit back and take in its luxury. You'll see what we mean by The Monaco Difference. It means exceeding your expectations in every way.



In front of you, an elegant burlwood dash frames easy-to-read analog gauges, including speedometer and tachometer, as well as a compass and exterior temperature gauge. All headlamp, wiper and cruise controls are located on the V.I.P. steering wheel.

1. Control

It's all at your fingertips.

Some motorhome driver stations look like the cockpit of a 747. But Signature Series cockpit design is a masterpiece of driver-friendly ergonomic design. Simple, elegant and logical.

Logic drives Signature Series' cockpit design so you can drive in comfort all day. Cushy seats with six-way power cradle you in comfort. At the flip of a switch you can adjust brake and accelerator pedals to the perfect position.

And at your right hand, a flip-up LCD screen system that combines GPS navigation, color rear vision and your AM/FM stereo sound system with six-disc CD changer.



Push button adjustments set brake and accelerator pedal positions to suit each driver's comfort.

Choose your pleasure. The Signature Series salon is equipped with a 24-inch television (standard) or a 27-inch model or this 42-inch wide-screen plasma TV, all by Sony.

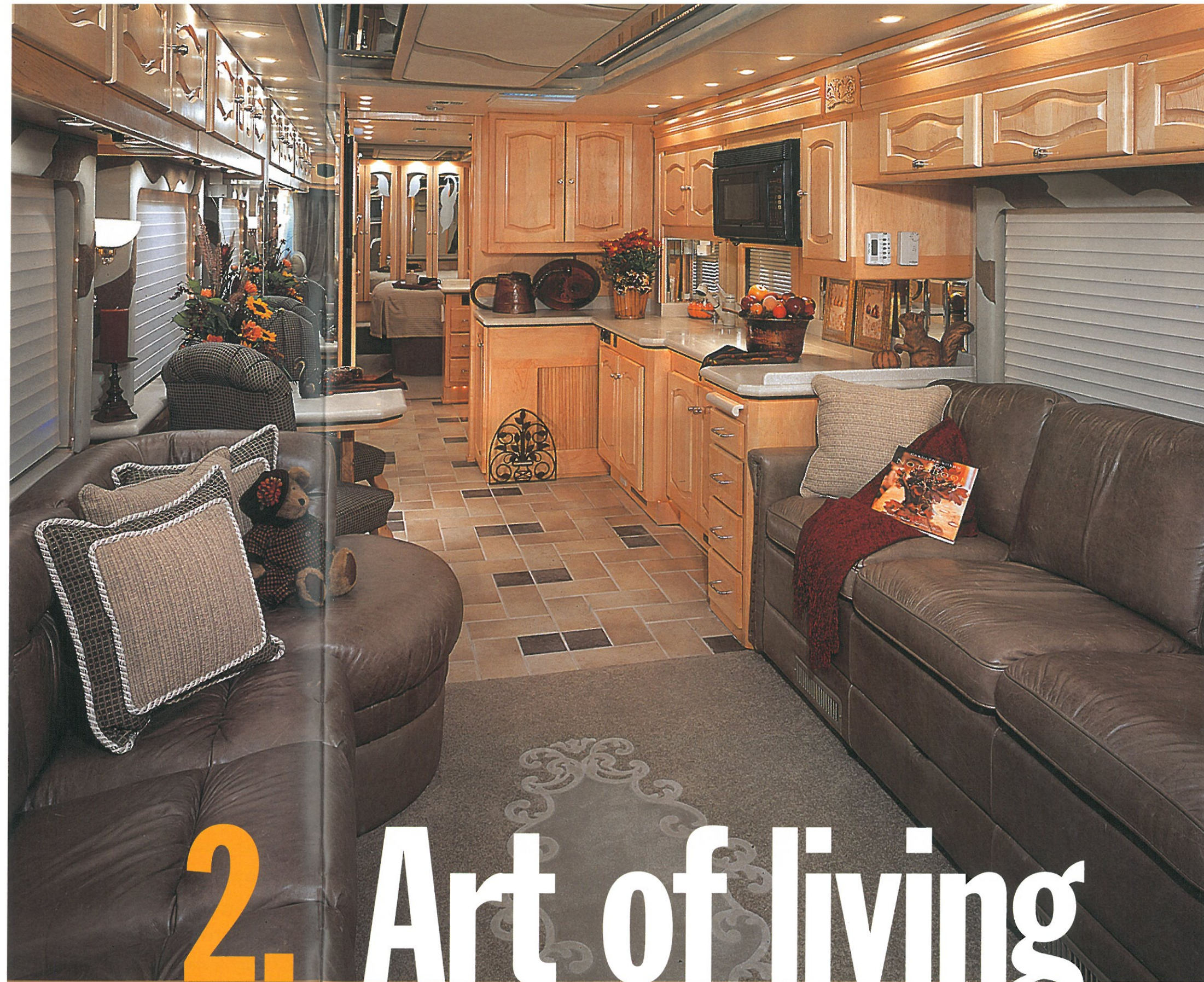


Signature Series brings the art of motorhome living to beautiful new heights.

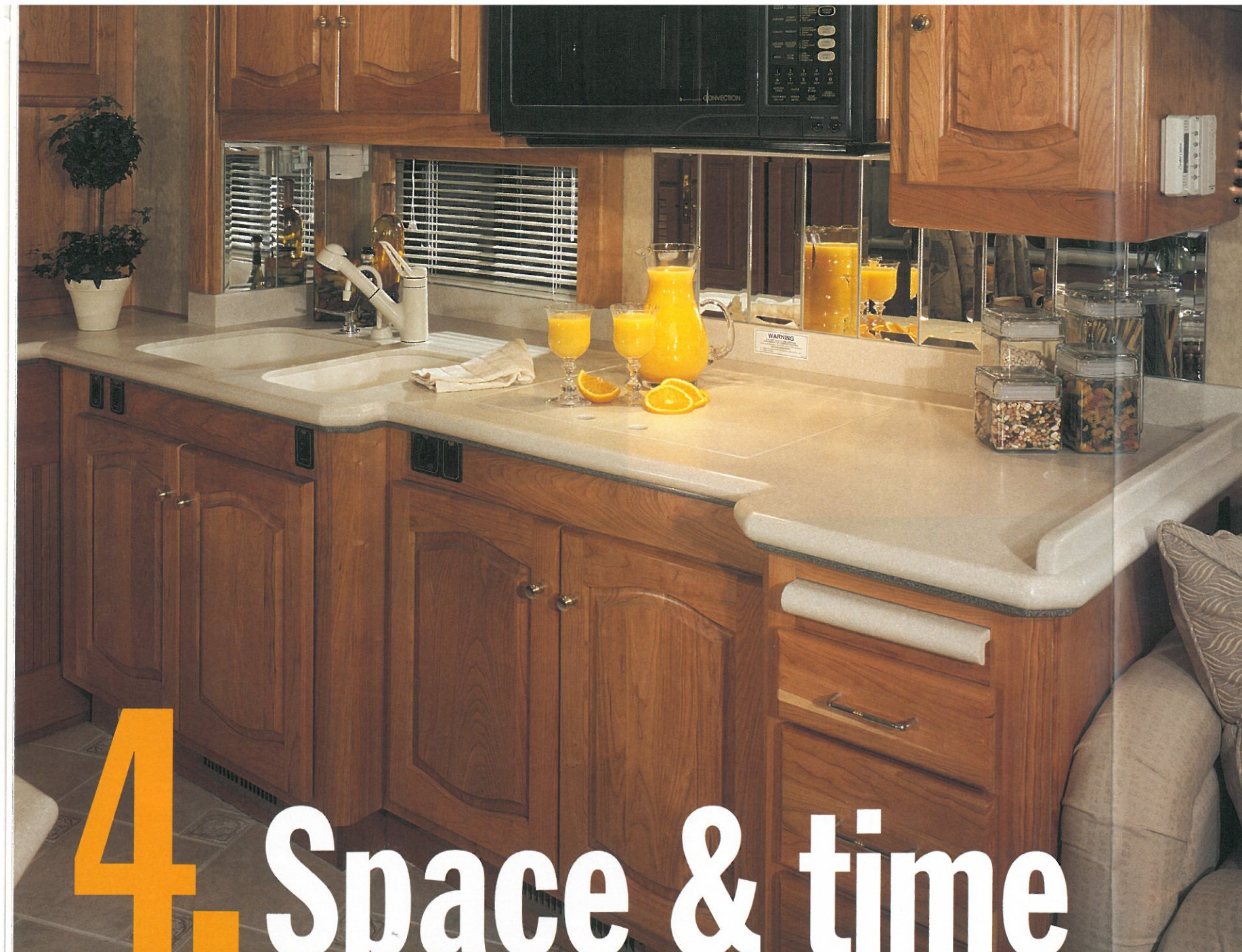
This coach is the pinnacle of Monaco design, which means no luxury has been omitted, no detail overlooked.

A few examples...

For your entertainment, a home theater sound system by Bose, a Datron automatic digital satellite system, stereo VCR, Sony DVD player, Sony color TV in the living room, the bedroom and, as an option, outdoors (as part of an outdoor entertainment center with two Bose speakers that are also wired to the radio and CD changer inside.)



2. Art of living



4. Space & time

Space is why you leave the confines of home for the open road. Shouldn't you have more of it inside your coach, too?

No one does slide-outs better than Monaco's kitchen Suite Slide. It opens up your coach from kitchen to cockpit. There's never a step up to trip you. Our patented design means you can use everything—all the plumbing and appliances—even in the travel position. Your kitchen and living room always look beautiful.

We don't want you to waste time and effort either. So, for 2001, we've introduced automatic travel locks. Now you can slide in or out in seconds at the touch of a button. The braces you once had to wrestle with to lock the slide-out ceiling tight for travel are gone. There are many standard



Signature Series' Kitchen Suite Slide operates at just the touch of a button. It locks for travel and unlocks automatically.

The tile floors in kitchen and bath may be ordered with optional heating to warm your feet on cool mornings.

The Suite Slide kitchen offers many distinct advantages.

- 1. A completely flat floor—no steps to trip over.**
- 2. All appliances and plumbing are fully operable whether the Suite Slide is in or out.**
- 3. Weatherproofed and sealed to keep out weather.**
- 4. Our patented slide-out mechanism has been rigidly tested to operate smoothly for years of trouble-free use.**
- 5. Greatly increases your living space.**

features offered for your convenience, including a washer-dryer, four-door refrigerator-freezer with ice maker, and microwave/convection oven. You can option a dishwasher and separate ice maker, both with raised-panel doors.

Of course, all cabinetry is solid hardwood, with hidden hinges and superb construction. Adjustable cabinet shelves let you make optimum use of storage space. And every shelf is carpeted, to protect your belongings and for quiet driving.

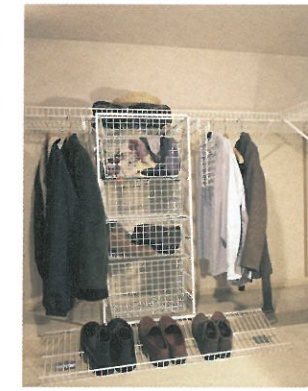
Monaco designers never miss a chance to put a light, a cup holder, a vent, a little extra storage where you'd most want it. And with its huge, cedar-lined wardrobe space, a Signature Series is the coach you'd want for long-distance or full-time travel.



5. Splendor

The Signature Series design concept: the best of everything, even in the finest details. A few examples: Corian surfaces everywhere. The kitchen counter, including the molded sink and flush, recessed range cover. The dinette table and living room cocktail table. The nightstands. The shower walls. Even the windowsills. And ceramic tile in the galley and bath. Lighting everywhere. For every need and every mood. Including elegant rows of recessed ceiling lights. And romantic trim lighting around windows and counter edging.

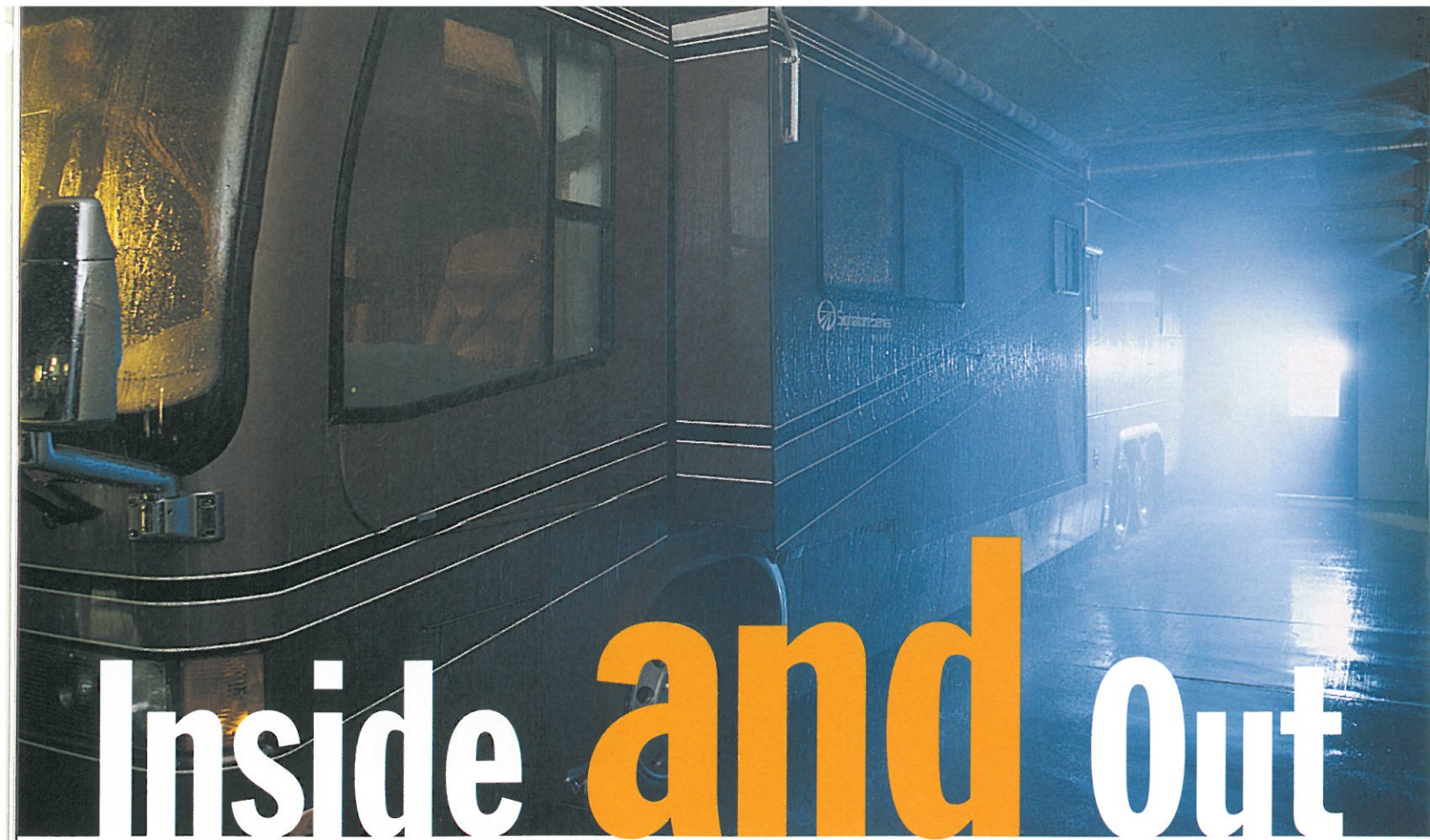
The ceiling liner is soft, padded vinyl that looks elegant, is easy to clean, and absorbs sound. Air conditioning vents are recessed, so you can feel a cascade of cool air without seeing where it comes from. Power shades are now standard in the living room and bedroom.



The 43' Double Slide-Out model offers optional LeRowan shelving for extra convenience and closet organization. Standard in the 43' Slide Out, a carousel closet helps make storage space more intelligent.



The built-in washer/dryer combination adds convenience while traveling.



Inside and Out



Above: Monaco continues to add value to your coach with a comprehensive paint procedure. Three layers of clear coat provide UV-ray protection and help insure the beauty of your coach with minimal maintenance for years to come.



Far right: Wiring and ducted air conditioning are smartly sealed in the cut-out rafter sections of the roof.



Monaco pioneered Slide Out technology for motorhomes many years ago. Over the years we've perfected that technology with rigorous testing of our patented Suite Slide mechanism so that you can be assured of trouble-free operation year after year. Keeping you and your coach dry on the inside is a high priority. Our specialized rain booth floods the coach roof, sidewalls and all seams of the coach in both open and closed slide-out positions. Sophisticated testing procedures check all seams and windows in the interior and exterior for flaws or leaks.



You get added enjoyment with large outdoor awnings that provide shade and protect your patio furniture from rain, heat and UV rays. The Suite Slide extends on the driver's side which means the curbside patio area is unobstructed and enjoys its own full-sized awning. An optional automatic awning is available.



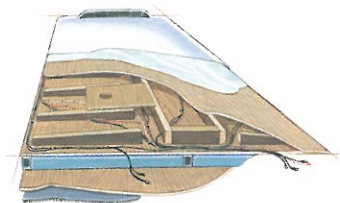
The large rear engine access door with pantograph hinges and struts raises and lowers for easier access to the engine compartment.

A rail-mounted 12KW diesel generator is positioned far forward to reduce noise inside the coach. The entire unit slides out electronically for ease of inspection.

Oversized pass-through bays feature insulated aluminum doors that raise and lower on bus-style pantograph hinges.

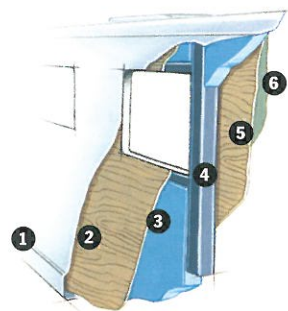
Construction that affords the highest level of protection is a priority for Monaco. It begins with a high gauge, high quality tubular steel frame surrounding the coach that's welded together as an integral part of our Roadmaster chassis foundation. The layers of wall insulation are vacuum bonded to the steel frame forming an air tight envelope. The roof has added layers of luaun paneling and insulation and a layer of plywood topped with vapor barriers. A single, seamless molded fiberglass top finishes the roofing and helps ensure that your motorhome is shielded from cold, heat and noise.

7. Integrity



The roof structure consists of:

1. A one-piece fiberglass roof, crowned for water run-off and seamlessly joined with the front and rear end caps.
2. Foam insulation.
3. Luaun paneling.
4. Wood framing to support the crowned roof. Note the center tunnel that houses wiring and air conditioner ducts.
5. Tubular steel framework.
6. Vapor barrier.
7. Plywood sheeting.
8. Sound-absorbing, easy-to-clean padded vinyl interior headliner.



Layers and layers of protection.

1. Gelcoat fiberglass outer wall.
2. Luaun Paneling.
3. R 7.5 closed cel foam seals every nook and crevice.
4. Heavy-gauge tubular steel.
5. Luaun paneling.
6. Decorative wall coverings.

One of the joys of owning a Signature Series is its priceless quality. The way everything works. The exquisite fit and finish. Its quiet strength. Clean-slate engineering lets us design quality in from square one. Signature Series' body work is a smooth, solid vacuum-bonded lamination of fiberglass, steel-cage framing, foam insulation and Luaun paneling. (See illustration.) Its framework is bolted and welded to the chassis as part of Signature Series' semi-monocoque superstructure that distributes coach weight evenly over the chassis. The Structurewood 1-1/4-inch floor is screwed down to stay quiet, and it includes an adhesive layer.

We build all our own all-hardwood cabinets and mount them to the walls on rubber pads, to reduce squeaks while you're driving.

We make our own fiberglass front and rear caps and arched roof, to ensure quality, and we join end caps and roof seamlessly into a single unit. We also injection-mold our own soft-touch dashboards and other components.

Our wiring harness is color coded to eliminate service headaches.

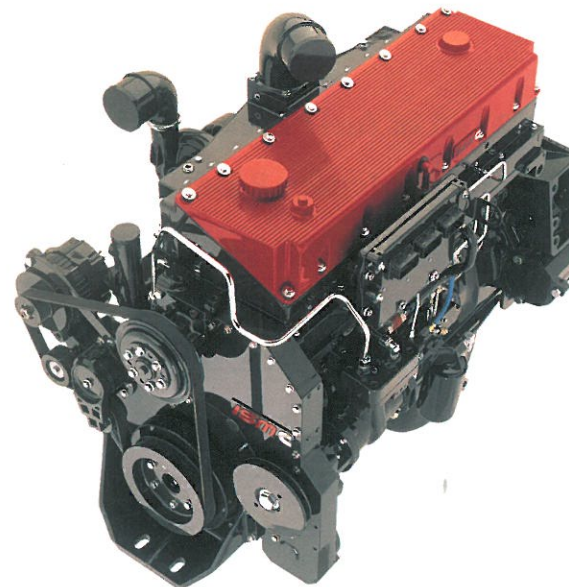
The chassis is double coated, using a fish-oil-based rust inhibitor, and it receives a 1/8-inch undercoat. We also add undercoating around the window framing for a better seal.

Body paint consists of a hand-sprayed polyurethane base coat, three color coats and four coats of UV-resistant clear coat baked on at 180°F.

Every part built into your Signature Series coach is documented (brand, description and who installed it) in a book that follows your coach down the assembly line and is then filed in our warranty department for dealer reference.

At Monaco, quality isn't something we try to add onto your coach after it's built. It's built in at every step.

8. Awesome power



Cummins 500 horsepower ISM turbo diesel engine

Your Cummins 500 ISM engine features:

- 500 horsepower with 1,550 foot-pounds of torque at only 1,200 rpm.
- Four-valve centered fuel injection technology.
- Fully optimized drive train.
- Five year warranty with no deductible.

Take the wheel. You're in command of one of the most sophisticated driving machines ever to hit the road. The throttle and shift controls are electronic, so you get instant response.

The awesome Cummins 500hp ISM turbocharged diesel engine is one of the most advanced power plants on the road. A computer monitors all engine functions to optimize performance and fuel consumption second by second. The Cummins 500hp ISM gives you improved fuel economy, lower maintenance costs and longer maintenance intervals.

It carries a five-year no-deductible warranty.

The engine is married to a six-speed, electronic shift Allison 4000MH transmission. This package gives you the power and performance you need to tackle virtually any driving condition and tow up to 10,000 pounds, too.

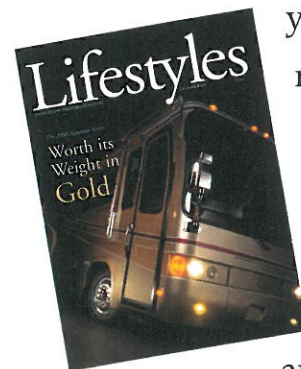
You've got a friend...



Emergency Road Assistance is provided to Monaco owners anywhere they travel in the U.S. or Canada 24 hours a day, 365 days a year.

As a Monaco customer, you own more than a motorhome. You're party to a warm relationship you can call on any time...to make your travels more secure, better informed and more fun.

24-hour emergency service. Broken down? Flat tire? Out of fuel? Locked out? Need a tow to a qualified RV repair facility? The Monaco Roadside Assistance Program hurries to the rescue. One toll-free phone number is the Monaco owner's link to emergency roadside assistance 24 hours a day, 365 days a year. Anywhere you travel in the U.S. or Canada, a professional RV emergency repair and towing specialist will respond to your call. And he'll only charge you for the actual repairs, never for the roadside service call or tow.



Lifestyles Magazine, published by Monaco, highlights interesting trips, places to see, club activities and news about special events throughout the year.

Monaco clubs, rallies and more. Is making new friends and sharing good times and big adventures a big reason why you love motorhome travel? A Monaco owners' club is for you. Club activities include half a dozen large rallies each year—with great entertainment, good food and exciting tours and excursions plus seminars, free technical service, workshops, and the latest innovations in motorhome travel.

Get the grand tour at Monaco! We're proud to invite you to visit our manufacturing facilities in Oregon and Indiana. Just call us at our toll free number **1-800-634-0855** for easy directions and to confirm plant hours.

The information printed in this brochure reflects product design, fabrication, and component parts at the date of printing. The manufacturer reserves the right, at any time, to make changes in product design or material or component specifications as its sole option, without notice. This includes the substitution of components of a different brand or trade name which will result in comparable performance. All information printed in this brochure is subject to change after the date of printing. Some features shown or mentioned in this brochure are optional and may only be available in selected floorplans. Photographs may show props or decorations that are not standard equipment on Monaco models. Monaco, the Monaco logo and its design, are registered trademarks. All other products and company names are trademarks and/or registered trademarks of their respective holders. While the color of the motorhomes exterior and the interior fabrics depicted in this sales brochure are fair and reasonable depictions, the colors depicted may not be an exact match of the actual colors because of the variances in photo-processing and variances caused by inserting the photographs within the sales brochure. Due to product improvements and/or changes during the course of the model year, photography represented herein may not reflect exact offerings in your unit. Please confirm item availability with your dealer at the time of the order. Due to product improvements, changes during the model year and/or transcription errors that may occur, information represented within this brochure may not be accurate at the time of your purchase. If certain information is significant to your purchasing decision, please confirm the information with your dealer prior to submitting your order. 10.20.00.

Visit Your **Signature Series** Dealer.



**Floorplans,
Color Choices,
and Specifications**

Specifications

for the 2001 Signature Series

Body Construction

Semi-Monocoque Tubular Steel Frame Construction
Full Fiberglass Front & Rear Cap
Fully Undercoated Underbelly
Seamless One-Piece Molded Crowned Fiberglass Roof
New Base Coat & Paint Scheme
Rear Cap w/Ram Air Design
Insulated Aluminum Baggage Doors
Pass-Through Storage Compartments
Tag Axle
Non-Radius Front Entry Door
Monaco Full Length Mud Flap
Complete Pass Through Storage Bay Slide-Out & Single Slide-Out Bay
Large Engine Access Door w/Pantograph Hinges & Struts
Adjustable Pedals Brake & Accelerator Pedals
Triple Head Exterior Mirrors
Service Center
Power Locking Doors (Entry & Bays)
Dual Fill Fuel Tank
Travel Locks
Air Leveling
10,000lb Hitch Receiver
Transmission Oil & Engine Cooler
Air Disc Brake System w/Anti-Locking Brakes
Fuel Filter System
Polished Aluminum Wheels
Chrome Decal

Options

Acrylic Front Protective Mask
3M Film Front Mask
Hydraulic Leveling

Cockpit Features

Deluxe Tilt Steering Wheel w/Cruise Control
CD Player/Radio
Dash w/Radio/Navigation System/Back-Up Camera System/Outside Temperature Gauges & Compass
Smart Steering Wheel w/Burlwood Dash
Leather Pilot & Co-Pilot Seating w/Six Way Power Adjustments
Driver & Passenger Seats w/ Heat & Power Lumbar
Power Footrest in Co-Pilot Seat
Audible Turn Signals
Electronic A/C Heat Climate Control System
Hand Held 40 Channel CB
Map Lights
Pilot & Co-Pilot Power Sun Screens
Drink Tray

Overhead Windshield Ventilation System
Round Halogen Driving/Fog Lights
Remote Control Heated 3-Way Adjustable Mirrors w/Turn Signals
Chrome Air Horns
Air Actuated Power Step Cover in Front Door Model
Drink Holder on Passenger Side
Docking Lights

Options

Entry Light FOB (Porch Light & Interior Step Light w/Auto Shutoff)
Computer Laptop Workstation
Buddy Seat w/Power Footrest
Trip Tek Message Center
Electric Front Privacy Drape

Appliances and Accessories

24" Sony Vega Stereo Color TV w/Remote in Living Room
20" Sony Vega Stereo Color TV w/Remote in Bedroom
Hi-Fi Stereo VCR
Bose Sound System LS30
Fully Automatic DSS System
TV Antenna w/Power Booster
Combination Washer/Dryer
Microwave Convection Oven
Recessed Two Burner Cooktop
4 Door Refrigerator w/Ice Maker & Raised Panel Doors
Safe
Cutting Board
Sony DVD Player
Ceiling Fan in Bedroom
Digital/Analog Cellular Antenna

Options

Separate Ice-Maker w/Raised Panel Doors (N/A 43 Caesar, 43 Titan, 45 Classic S/O, 45 General)
Plasma TV in Wrap Around Cabinet
27" Stereo TV w/Remote in Living Room
In-Motion DSS System
Exterior Entertainment Center w/20" Sony Vega TV, Speakers & Phone Jack
Dishwasher w/Raised Panel Door

Interiors

Stained or Natural Oak Cabinets
Decorator Fabric Window Valances
Ceramic Tile Floors in Galley & Bath
One Touch Kitchen Sink Faucet
Hand-Crafted Solid Wood Cabinetry

Interiors (continued)

Skylight in Shower
Corian Countertops & Molded Sink
Corian Countertops & Molded Sink in Bathroom
Designer Vinyl Wallpaper Throughout
Headboard w/Accent Mirrors
Queen Island Bed w/Premium Mattress
Vinyl Ceiling w/Recessed Areas for Hidden A/C Vents
Sculptured Carpet in Living Room
Countertop Edge w/Rope Lighting
Lighted Interior Dash Grab Handle
Fluorescent Lights In Overheads
Wide Corian Window Sills on Living Room, Dining Room & Bedroom Windows
Sliding Glass Shower Enclosure
36" Round Showers
Corian Shower Wall Design
Power Sun Shade w/Remote Control on Pilot Side
Etched Rear Wall Mirror in Bedroom
Day/Night Pleated Shades in Living Area, Dining Area & Bedroom
Mini Blinds in Kitchen & Bath
Carpet Lined Cabinet Shelves
Cedar Lined Wardrobes
Power Silhouette Shades in Living Room & Dining Area
Double Raised Refrigerator Panels

Options

Decors: Waterlillies, Mink, Calligraphy, South Beach
Ralph Lauren Decors: Polo Club, Stetson, Park Avenue, Classic
Walnut, Natural or Stained Cherry, White Wash Ash, Natural Maple Cabinetry
Leather L-Lounge
Leather J-Lounge Dinette
Leather U-Lounge Dinette
Leatehr J-Lounge/U-Dinette
Computer Table
Wrap Around Curbside Desk
Leather J-Lounge
Leather Sleeper/Loveseat
Leather Euro Recliner
Fabric Euro Recliner
Leather Recliner
Twin Beds
Booth Dinette
Bath Tub (N/A 40 Premier)

Electrical System and Lights

50 AMP 120/240V Distribution Panel & Power Cord
Battery Maintainer
Dual 12V Outlet

Surge Protector
Emergency Start Switch
Inverter
12kw Generator
Power Cord Reel
Lighted Utility Center
Two Group 31 Batteries for Chassis
Four 6V House Batteries
Solar Battery Charger
Wall Lights

Options

Pure Sine Wave Inverter
All Electric Unit (2 Inverters, 5 Gel Batteries, 270 AMP Alternator, All-Electric Refrigerator & Cooktop)

Heating, Vents and Air Conditioning

Aqua Hot Water System
Three 13.5 BTU Ducted Roof A/C Thermostat Control w/Heat Pumps
Fan w/Thermostat Control in Kitchen

Options

Heated Tile Flooring

Plumbing and LP Systems

Insta-Hot Water
Dual Stage Water Filtration System
Double Headed Shower Fixture
Water Pump

Windows, Doors and Awnings

Tinted Dual Glazed Windows
Large One-Piece Windshield
Window Awnings
Keyless Entry for Front Door Only
Front Door w/Screen Door
Passenger & Driver Sunscreens
(2) Large Vertical Windows, Passenger, Sofa Side
(2) Large Vertical Windows, Bedroom
Automatic Awning Extended Over Front Door

Safety Equipment

Carbon Monoxide Detector
Smoke Detector
LP Gas Detector
Fire Extinguisher

Options

Deluxe Security System

Due to product improvements, changes during the model year and/or transcription errors that may occur, information represented within this brochure may not be accurate at the time of your purchase. If certain information is significant to your purchasing decision, please confirm the information with your dealer prior to submitting your order. 10.20.00.

Chassis, Weights, Measurements and Tank Capacities

for the 2001 Signature Series

Chassis/Engine/Suspension

Chassis	Roadmaster RM10H	
Diesel Engine	Cummins 500hp ISM	
Cubic Inch Displacement	661/11L	
Torque	1550 lbs.ft. Max @1200 rpm	
Transmission	Allison 4000MH World 6-Speed Electronic Transmission	
Alternator	200 Amp	
Rear Axle Ratio	4.30:1	
Suspension	Full Cushion Air Glide Suspension w/10 Outboard Mounted Airbags & 10 Bilstein Shock Absorbers	
Radial Tires	295/80R/22.5	
Fuel Tank Capacity	200 Gallons	

Weights

	40 Admiral	40 Premier	40 Centurion	42 Classic	42 ClassicS/O	42 Chancellor	42 Supreme	42SS FD	42SS SD	43 Caesar	43 Titan	45 Classic	45 ClassicS/O	45 General	45 Empress
Gross Vehicle Weight Rating(lbs)	47,600	47,600	47,600	47,600	47,600	47,600	47,600	47,600	47,600	47,600	47,600	47,600	47,600	47,600	47,600
Gross Combined Weight Rating(lbs)	57,600	57,600	57,600	57,600	57,600	57,600	57,600	57,600	57,600	57,600	57,600	57,600	57,600	57,600	57,600
Gross Axle Weight Rating(Front)(lbs)	14,600	14,600	14,600	14,600	14,600	14,600	14,600	14,600	14,600	14,600	14,600	14,600	14,600	14,600	14,600
Gross Axle Weight Rating(Rear) (lbs)	23,000	23,000	23,000	23,000	23,000	23,000	23,000	23,000	23,000	23,000	23,000	23,000	23,000	23,000	23,000
Tag Axle Weight Rating(lbs)	10,000	10,000	10,000	10,000	10,000	10,000	10,000	10,000	10,000	10,000	10,000	10,000	10,000	10,000	10,000

Measurements

Wheelbase	245"	245"	255"	261"	261"	271"	271"	261"	261"	273"	273"	297"	297"	297"	307"
Overall Length	40'10"	40'10"	40'10"	42'4"	42'4"	42'4"	42'4"	42'4"	42'4"	43'4"	43'4"	45'4"	45'4"	45'4"	45'4"
Height (with A/C)	11'10"	11'10"	11'10"	11'10"	11'10"	11'10"	11'10"	11'10"	11'10"	11'10"	11'10"	11'10"	11'10"	11'10"	11'10"
Interior Height	6'6"	6'6"	6'6"	6'6"	6'6"	6'6"	6'6"	6'6"	6'6"	6'6"	6'6"	6'6"	6'6"	6'6"	6'6"
Interior Width	96"	96"	96"	96"	96"	96"	96"	96"	96"	96"	96"	96"	96"	96"	96"
Exterior Width	100.5"	100.5"	100.5"	100.5"	100.5"	100.5"	100.5"	100.5"	100.5"	100.5"	100.5"	100.5"	100.5"	100.5"	100.5"

Tank Capacities

All Tank Capacities are Approximate. Actual "Useable Capacity" May Vary as a Result of Variances in Installation and Fabrication of the Tanks.

Water Heater (Gal.)	10	10	10	10	10	10	10	10	10	10	10	10	10	10	10
Grey Water (Gal.)	63	63	63	63	63	63	63	63	63	63	63	63	63	63	63
Black Water (Gal.)	45	45	45	45	45	45	45	45	45	45	45	45	45	45	45
Fresh Water (Gal.)	100	100	100	100	100	100	100	100	100	100	100	100	100	100	100
LP Tank (Gal.)	39	39	39	39	39	39	39	39	39	39	39	39	39	39	39

Actual filled LP capacity is 80% of listing due to safety shut off required on tank.

The information printed in this brochure reflects product design, fabrication, and component parts at the date of printing. The manufacturer reserves the right, at any time, to make changes in product design or material or component specifications as its sole option, without notice. This includes the substitution of components of a different brand or trade name which will result in comparable performance. All information printed in this brochure is subject to change after the date of printing. Some features shown or mentioned in this brochure are optional and may only be available in selected floorplans. Photographs may show props or decorations that are not standard equipment on Monaco models. Monaco, the Monaco logo and its design, are registered trademarks. All other products and company names are trademarks and/or registered trademarks of their respective holders. While the color of the motorhomes exterior and the interior fabrics depicted in this sales brochure are fair and reasonable depictions, the colors depicted may not be an exact match of the actual colors because of the variances in photo-processing and variances caused by inserting the photographs within the sales brochure. Due to product improvements and/or changes during the course of the model year, photography represented herein may not reflect exact offerings in your unit. Please confirm item availability with your dealer at the time of the order. Due to product improvements, changes during the model year and/or transcription errors that may occur, information represented within this brochure may not be accurate at the time of your purchase. If certain information is significant to your purchasing decision, please confirm the information with your dealer prior to submitting your order. 10.20.00.

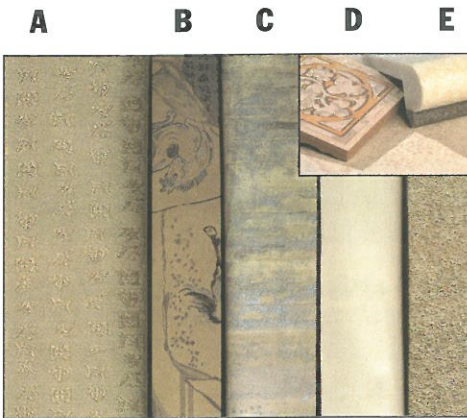
Color Choices

for the 2001 Signature

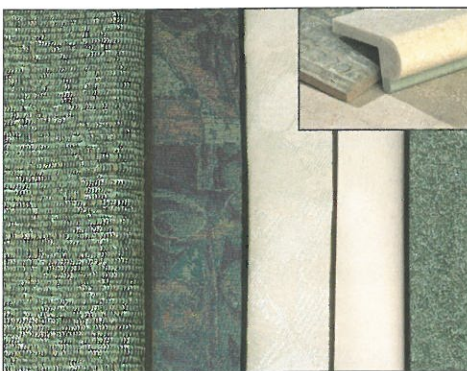
The following designations represent the fabric or carpet usage for all eight (8) interior decors:

A - Sofa, B - Dining or Chair, C - Bedspread, D - Vinyl/Leather Dash/Furniture, E - Carpet

Calligraphy



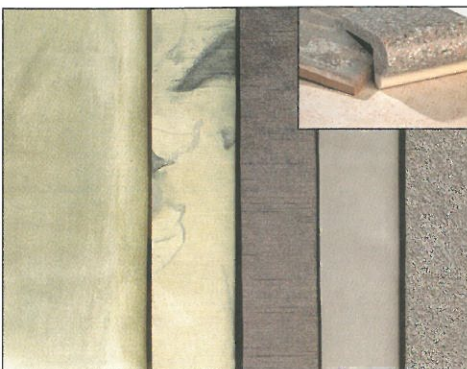
South Beach



Mink

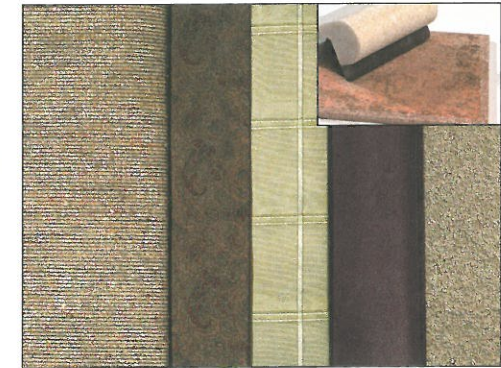


Water Lilies

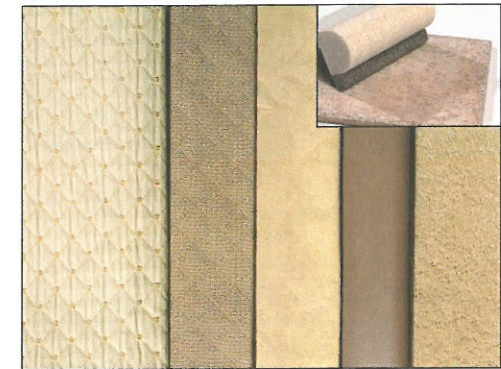


While the color of the motorhomes exterior and the interior fabrics depicted in this sales brochure are fair and reasonable depictions, the colors depicted may not be an exact match of the actual colors because of the variances in photo-processing and variances caused by inserting the photographs within the sales brochure. Due to product improvements and/or changes during the course of the model year, photography represented herein may not reflect exact offerings in your unit. Please confirm item availability with your dealer at the time of the order. 10.20.00.

Polo Club



Stetson



Park Avenue



Classic

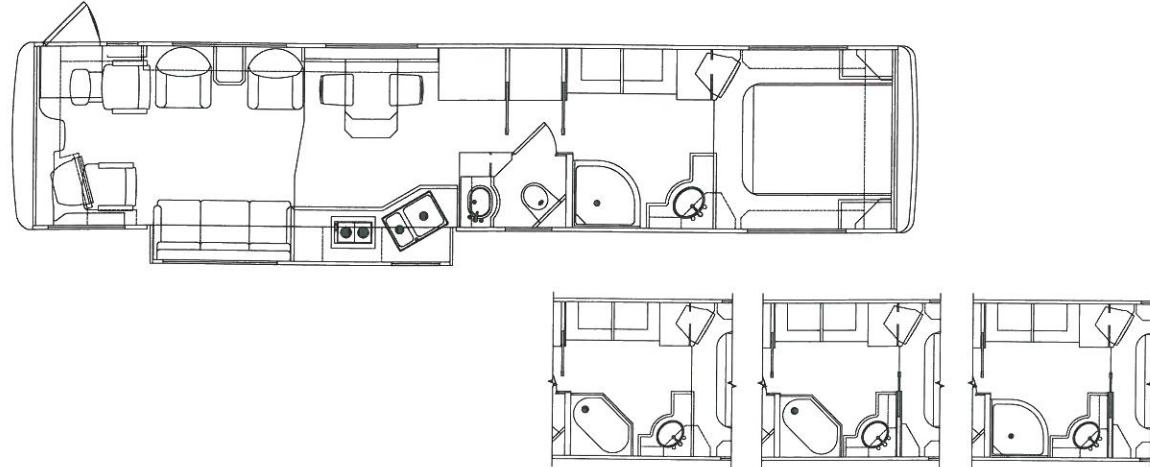


Floorplans and options for the 2001 Signature Series

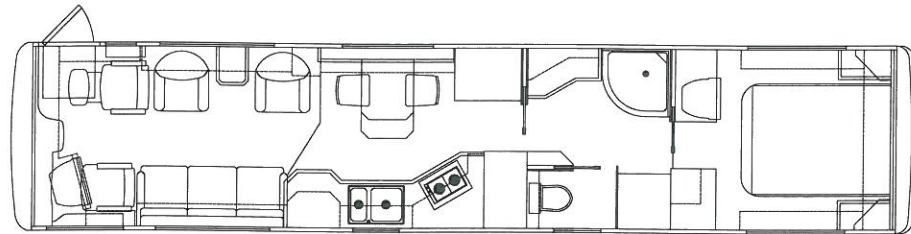
Options available on all floorplans:



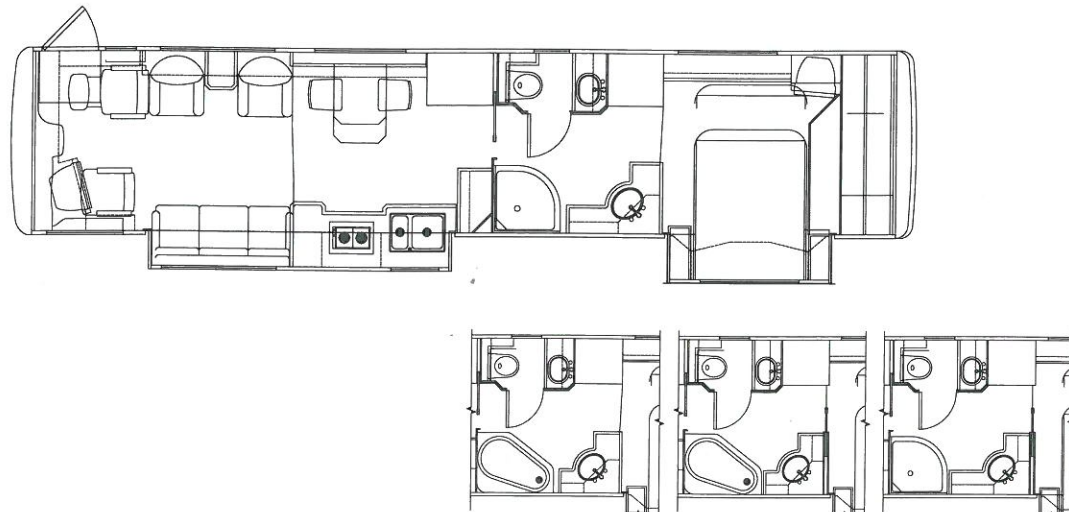
40 Admiral S/O FD



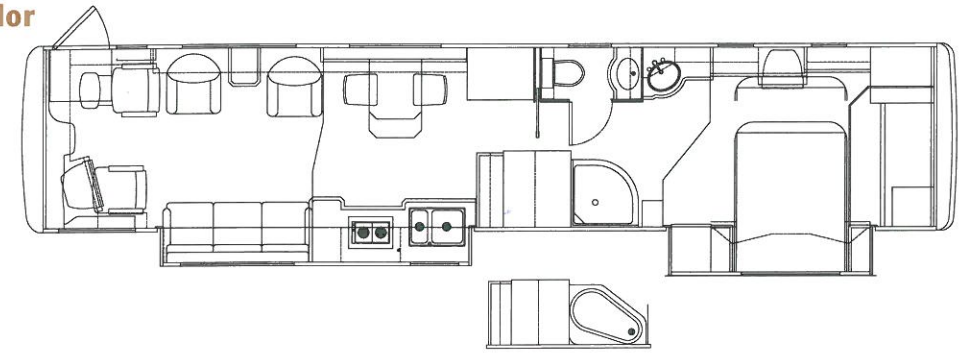
40 Premier FD



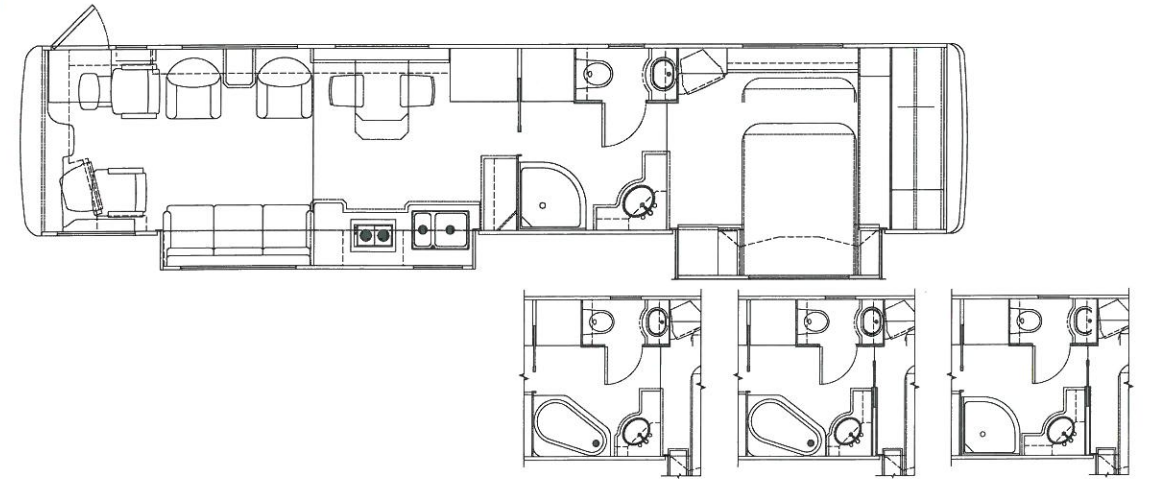
40 Centurion



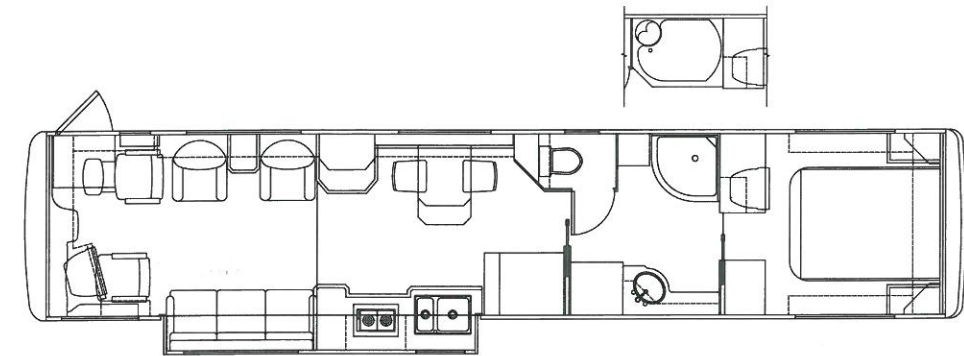
42 Chancellor



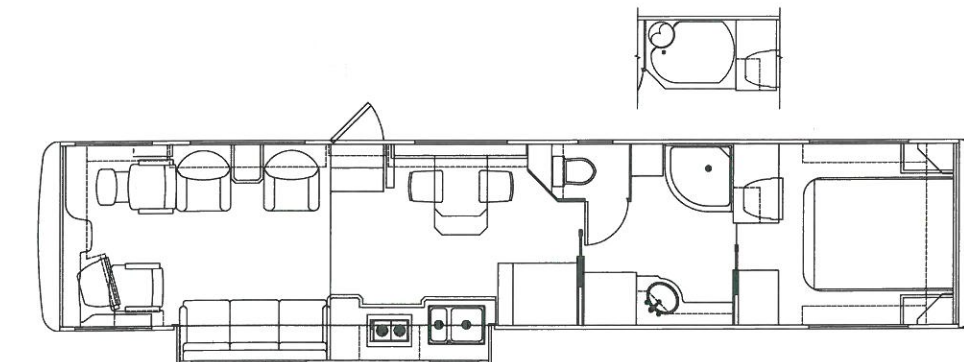
42 Supreme



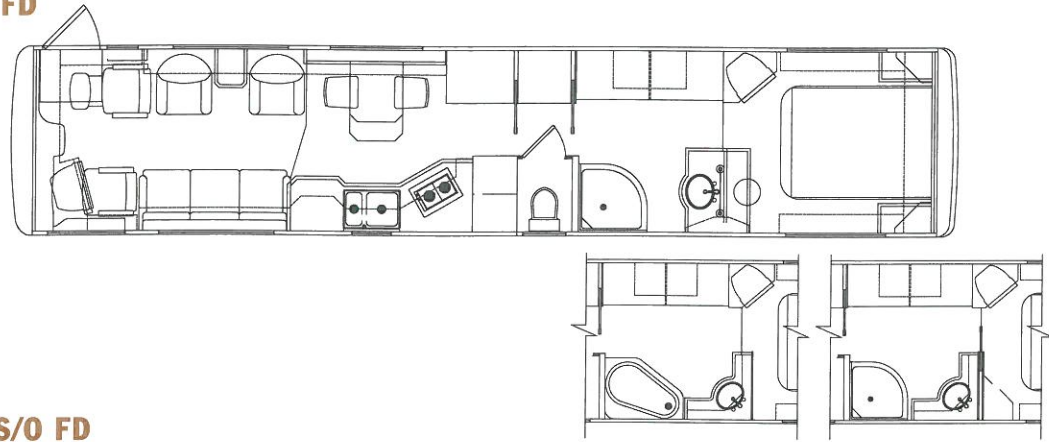
42SS FD



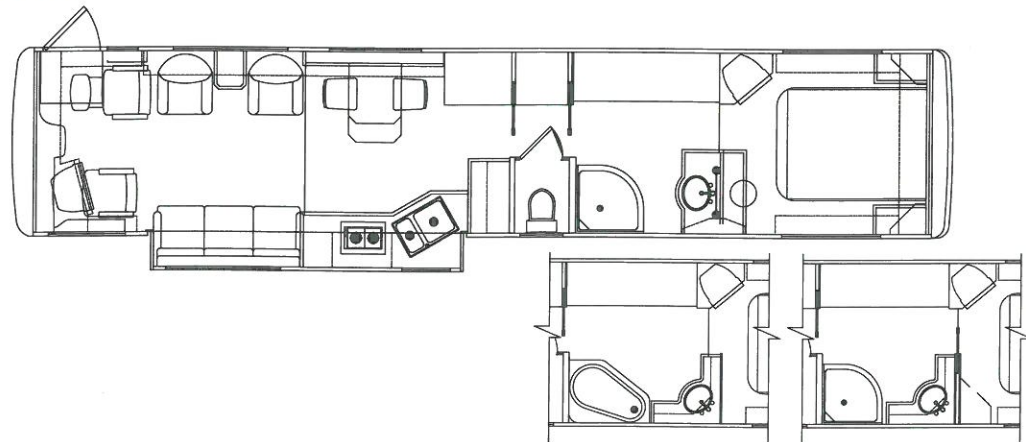
42SS SD



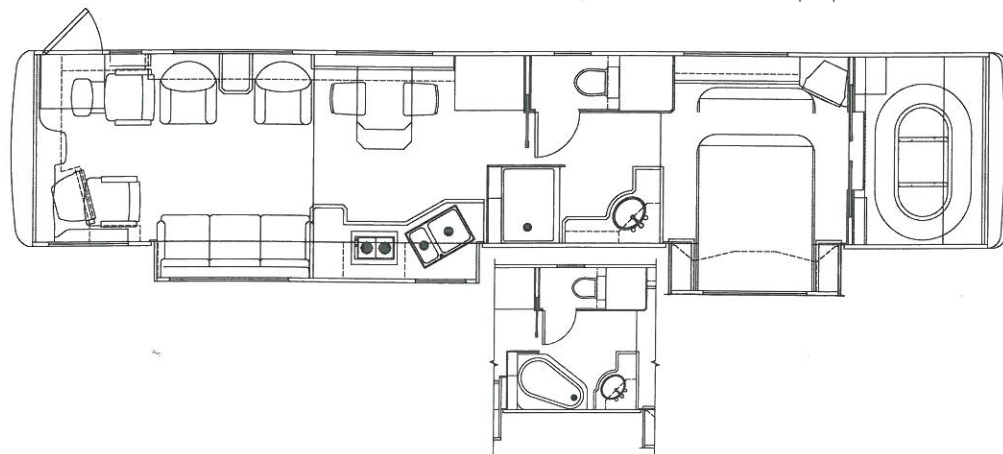
42 Classic FD



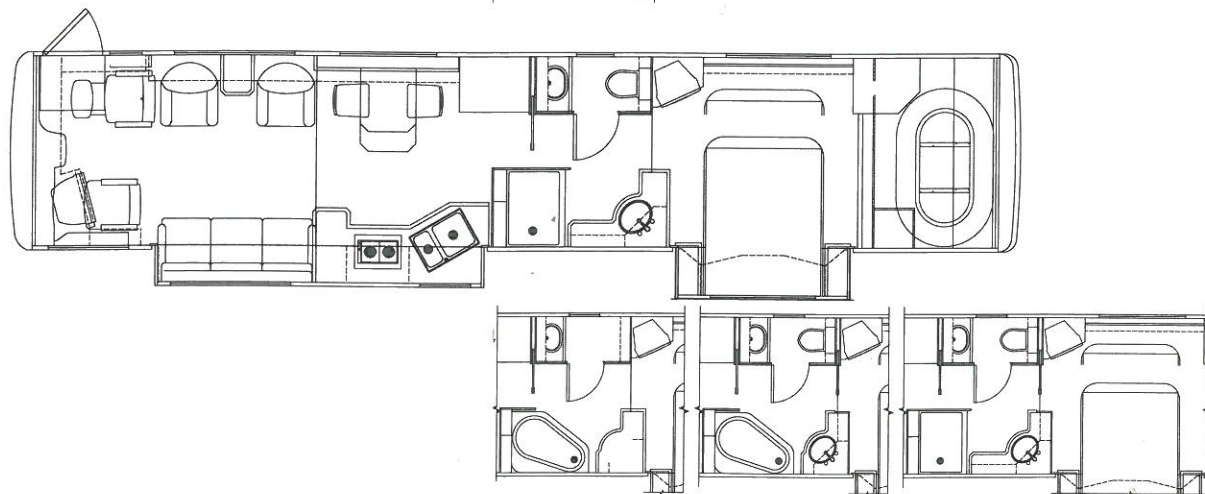
42 Classic S/O FD



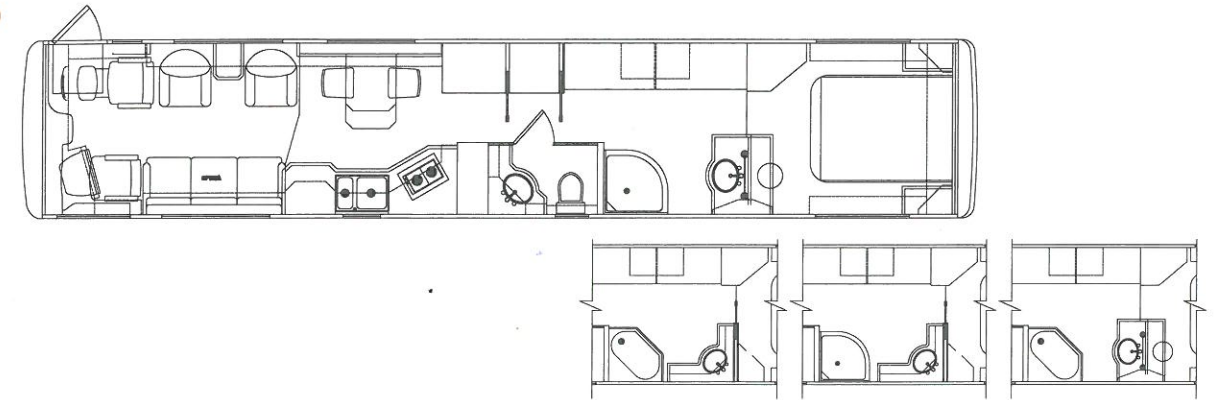
43 Caesar



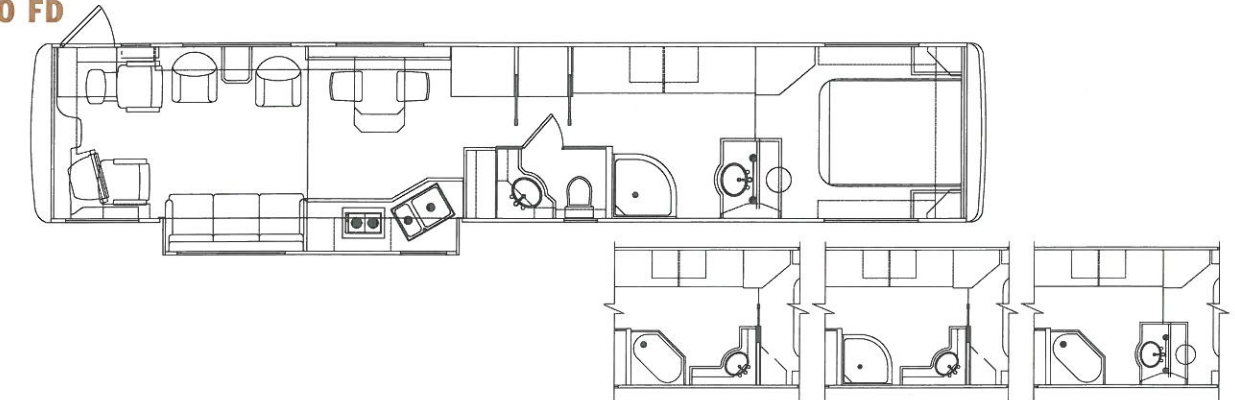
43 Titan



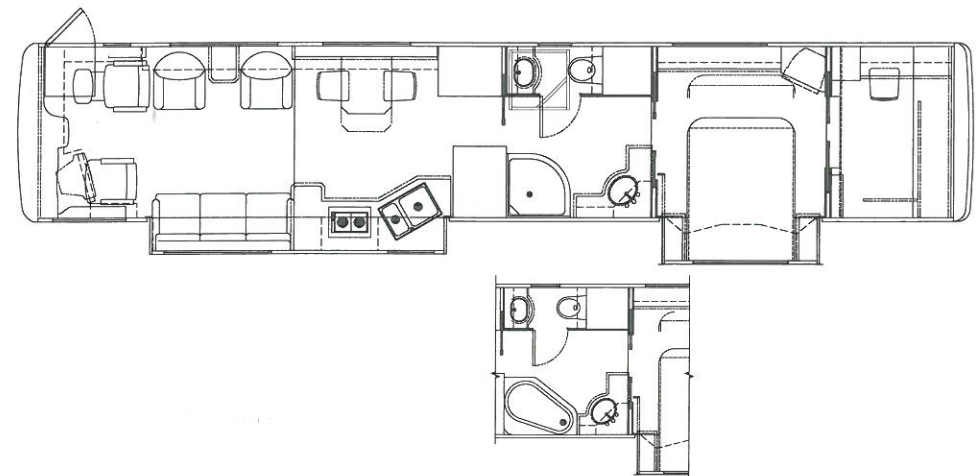
45 Classic FD



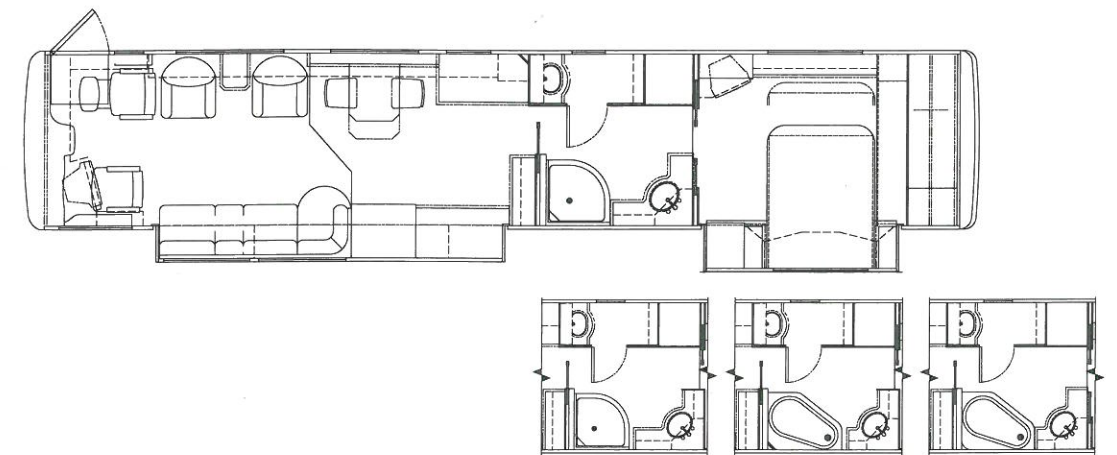
45 Classic S/O FD



45 General



45 Empress





Signature Series
M O N A C O



A Division of Monaco Coach Corporation

91320 Industrial Way, Coburg, Oregon 97408 • Toll Free (800) 634-0855 or (541) 686-8011
Indiana Division 606 Nelson's Parkway, Wakarusa, Indiana 46573 • Toll Free (800) 650-7337

Monaco Coach Corporation is traded on the NYSE under the listing MNC

Signature Series

M O N A C O C O A C H C O R P O R A T I O N

Monaco Motorhomes • Holiday Rambler Motorhomes & Towables • McKenzie Towables • Royale Coach Conversions

91320 Industrial Way, Coburg, Oregon 97408 • Toll Free (800) 634-0855 or (541) 686-8011

Indiana Division 606 Nelson's Parkway, Wakarusa, Indiana 46573 • Toll Free (800) 650-7337

Monaco is traded on the NYSE under the listing MNC



Visit our Website at:
<http://www.monaco-online.com>

Member
RVIA
RECREATION VEHICLE
INDUSTRY ASSOCIATION

MNC
Listed
NYSE
THE NEW YORK STOCK EXCHANGE