

2003 Winnebago Adventurer®



Adventurer

See for yourself why it's the best-selling Class A motor home.



38G-Beige Marble

It's in the details.

The spacious interior has been planned and executed to the smallest detail. You'll notice the eye-catching Stitchcraft premium furniture the moment you walk in. The BenchMark™ Full Comfort Dinette offers the same plush comfort as residential-style furniture. Day/night pleated shades offer several levels of light and privacy. Choose from oak or cherry woodgrain cabinetry that features a catalyzed finish for unsurpassed beauty and durability.

Nothing is left to chance when it comes to being user-friendly and comfortable. An available heat pump takes the chill off cool mornings without running the furnace. Increased living space is made possible by the StoreMore® slideout system. It moves interior cabinets and exterior storage compartments out with the slideroom for easy access. And the ceiling-ducted TrueAir™ Residential Central Air Conditioning system delivers quiet, efficient cooling.

It takes a lot of listening to make a motor home this great.

The 2003 Adventurer represents the most intensively researched motor home we have ever produced. It was created with the help of extensive feedback from RV enthusiasts and fine-tuned through rigorous testing and field trials. Its fusion of homey features and well-planned designs was created with one thing in mind: customer comfort.

Some things are simple, like the large, easy-to-operate switches. Others are more complex, such as PowerLine®, which automatically senses and controls 110-volt electrical usage. Still others just make good sense, such as the RV Radio™ designed specifically for RV use with large knob controls, cassette/CD player and weather band.

Expanded Ford and Workhorse™ chassis offerings are new for 2003, including a 22,000 lb. GVWR Workhorse chassis with 22.5-inch tires. These upgraded features and the abundant storage inside and out are just some of the reasons the Adventurer is the best-selling Class A in the industry. It's a motor home designed for RVers. Enjoy.



38G-Beige Marble

First-class entertainment.

Enjoy the added dimension you get from a variety of entertainment options starting with the standard 25" TV. The available VCR, DVD player and digital satellite dish guarantee that you'll never have to do without your favorite programs or movies. Enjoy the luxury of movie-theatre-quality sound with the available Deluxe Sound System with 5-channel QSurround™. This feature also includes a stereo TV and VCR. Select the available 300-watt inverter and enjoy these features even when you're not connected to shoreline or generator power.



38G-Beige Marble

Pleasant dreams.

The bedroom slideout offers abundant living and storage space, a tip-out clothes hamper (most models), mirrored wardrobe and a changing area. Most important, you'll enjoy a good night's rest on the walk-around queen-size bed with Serta® innerspring mattress.



Personal space or work space.

The desk/vanity area features a multi-purpose countertop with a tip-up storage area, an additional phone/modem jack and a chair that folds for easy stowing. There is also a standard, built-in 19" TV.



Grab brunch or go gourmet.

It's a pleasure to prepare meals in this spacious galley. Convenient features include a three-burner range with oven and a 30" residential microwave with a sensor cook feature for perfect food preparation every time. A microwave convection oven is also available, as is a four-door refrigerator/freezer (shown). The recessed, molded sink is stain resistant, easy to clean and includes a water purification system with a separate faucet. Solid-surface countertops come with a flip-up extension for even more valuable counter space. (Not available on 37C.) Under-foot, the galley has a great-looking, long-wearing vinyl woodgrain plank floorcovering.



Well-designed bath.

Adventurer's bathroom is spacious and well designed. Standard features include an overhead shower skylight; single-control shower faucet; makeup lights; roof-mounted, powered ventilator fan; and abundant cabinetry for added storage.

Stock up.

Bring along the makings for all your favorite meals. It's easy with Adventurer's slideout pantry and adjustable shelves (not available on 31Y). The double-door refrigerator is standard, with an available icemaker. A larger side-by-side refrigerator with built-in icemaker is available on the 35U, 37C and 38G.



We've thought of everything.

The hair dryer in the bathroom is mounted so it doesn't take up valuable drawer or countertop space. It even includes a night-light.



Have a seat.

The newly designed BenchMark Full Comfort Dinette is a Winnebago Industries exclusive and features innerspring seat cushions to provide the look, feel and comfort of residential furniture. Flip up the seats to access the large storage space or fold down the table to quickly convert the dinette into a comfortable bed.



Park anywhere.

Not only is it attractive and comfortable, the hoop-base lounge chair can be repositioned anywhere you want when the motor home is not moving. It rocks, reclines, has a footrest and is also available in luxurious leather.

Dinner is served.

The dining table provides comfortable dining for two and easily expands to accommodate four place settings to entertain guests. Available on all models, standard on 37C and 38G.



Flexibility.

The multi-function table provides dining for two, expands to accommodate four and also functions as a computer or hobby table. Available on the 37C and 38G.



Sit back and relax.

It's a couch! It's a recliner! It's a bed! It's all three! It's the Rest Easy™ Multi-Position Lounge.



At the touch of a button, it goes from a couch to a recliner with a pull-out ottoman.



Touch the button again and it's a comfortable 60" x 75" bed. A Winnebago Industries exclusive, Rest Easy comes standard with fabric covering or you can upgrade to the available leather.



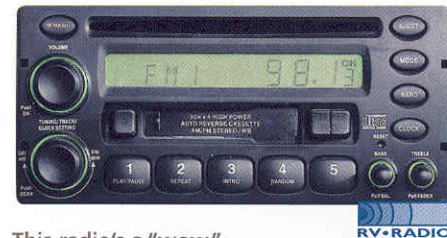
Take to the road.

The cockpit of the Adventurer is designed with your driving pleasure in mind. A lower engine cover design allows for easier access to the driver and passenger front seats. The dash controls are conveniently located and feature large, easy-to-read switches and gauges that are sized for easier operation. The standard dash-mounted electronic compass is a helpful navigation tool and provides exterior temperature at the touch of a button. The available Sony® rearview monitor system is built into the dash and includes one-way audio for safe backing and maneuvering.



Upfront convenience.

Pull out the available passenger-side, dash-mounted workstation and you'll find a handy place for using your laptop computer, writing letters or playing cards. There is also a convenient storage area underneath.



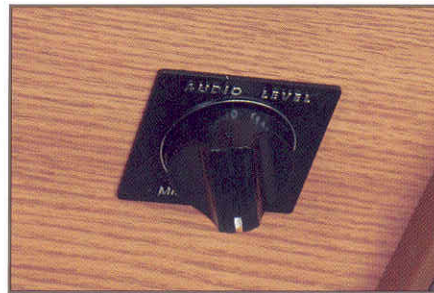
This radio's a "wow."

Our engineers worked closely with the radio manufacturer to create the RV Radio designed specifically for RV use. It includes an AM/FM stereo cassette/CD player with a built-in weather band for immediate weather updates at the touch of a button. Its large control knobs and buttons are easy to operate.



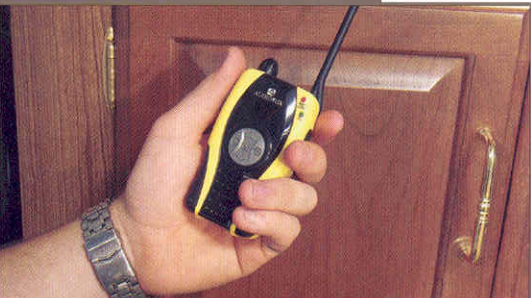
Convenience center.

The 110-volt AC and 12-volt DC breaker panels along with available two-way radios, rechargeable flashlight and handheld vacuum cleaner are located in the easily accessible convenience center.



Well-adjusted.

The standard sound system features control knobs on the bottom of the lounge-area overhead cabinets, which allows for individual speaker volume control.



Two-way radio.

For communication in the campground or added peace of mind on day trips, the four available 14-channel radios have a two-mile range and recharge from the coach's house batteries at their built-in charging station. Nickel metal hydride batteries provide up to 15 hours of standby and 90 minutes of talk time on a single charge.



Drive in comfort.

Arrive refreshed from your travels thanks to premium high-back cab seats. With multi-position armrests, swivel, recline and slide features, which are easy to reach and operate, you can adjust to the position that fits you best. Available upgrades include six-way power assist and leather.



Wash and wear.

Skip the trip to the Laundromat. Equip your Adventurer with the available washer/dryer combo (in the 37C and 38G only).



Store more gear conveniently.

A Winnebago Industries original, StoreMore is still the industry's premium slideout system. StoreMore features large, well-lit exterior storage compartments that are designed to accommodate bulky and odd-shaped items. Best of all, these compartments extend along with the slideroom for easy access without crawling under the slideroom. You'll also appreciate how easy it is to open the exterior compartment doors, thanks to single-paddle latches and gas struts.



Easy in. Easy out.

The smooth-operating driver-side door makes entry and exit more convenient.



Central water works.

Rinse off muddy or sandy gear outside at the exterior wash station. The same heated compartment also houses the major plumbing connections and service points for added convenience. System winterization and storage prep of the plumbing system is a breeze with the standard water heater bypass and manual winterization valves.



Wish on a satellite.

Expand your viewing options with the available digital satellite dish. For added flexibility, every Adventurer comes prewired for this option so you can easily add it if you choose.



The key to it all.

The KeyOne™ System allows one key to open most door locks. What could be simpler? For added convenience, the key is double bitted so it easily fits into the lock no matter which way the key is inserted.



The quiet powerful type.

A 5,500-watt Onan® Marquis Gold™ generator is standard. Or select the available 7,000-watt model (shown) for even more capacity. Both feature digital voltage regulation and a self diagnostic capability for simpler troubleshooting. An advanced vibration reduction design makes both of them the quietest RV generators in their class.



No drips.

We don't overlook even the smallest detail: built-in rain gutters channel rain away from the sidewalls, doors and windows to help keep your Adventurer's exterior clean and streak free.



Seeing is believing.

Adventurer's exterior mirrors feature larger flat and convex surfaces for expanded visibility and safety. Adjusting them is a snap thanks to the standard electric remote controls, which also include a defrost feature.



Get a handle on it.

Whether you are setting up at a campground or making a quick stop at a convenience store, the easy-to-grab exterior assist handle and extra-large interior assist bar help you get in and out with ease.



Now that's entertainment.

Adventurer comes equipped with an exterior entertainment center that includes AM/FM stereo with an antenna, a cassette or CD player, 12-volt DC receptacle, TV jack, 110-volt outlet, speakers and a removable table. The compartment locks securely.



Enjoy the power.

Keep your electrical system running smoothly, even when operating your central air conditioning on a 30-amp. shoreline, with the PowerLine Energy Management System. It monitors onboard 110-volt electrical usage and automatically minimizes the nuisance of campground circuit breaker tripping by controlling the operation of "postponable" electrical loads during heavy power usage. As demand decreases, PowerLine automatically returns power to the secondary appliances and systems.



POWERLINE ENERGY MANAGEMENT SYSTEM

Everything is A-OK.

The OnePlace™ Systems Center places important and frequently used switches, gauges, levels and controls in one convenient location so you can easily check them at a glance.

ONEPLACE
systems center

Select your perfect climate.

Interior climate control has never been better, thanks to Winnebago Industries' exclusive TrueAir Residential Central Air Conditioning. It utilizes superior cooling technology to supply optimum environmental control throughout the coach. At the heart of the system is a Coleman®-Mach® unit, which is located below the floor line of the coach. This not only provides a lower vehicle profile, it reduces interior noise and enables easier servicing. It also eliminates roof run-off from A/C related condensation and lowers the vehicle's center of gravity.

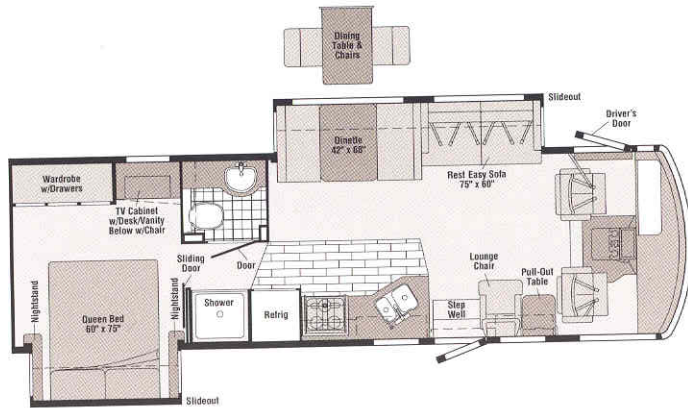


TrueAir's custom-designed electronic thermostat is easy to use and offers superior temperature control. The PowerLine Energy Management System lets you fully utilize TrueAir, even when connected to a 30-amp. service, by cycling secondary appliances during peak usage to maintain optimum cooling capacity. Dual high-efficiency cooling circuits supply conditioned air through ceiling-routed ducts specifically designed to reduce airflow restrictions that can rob cooling efficiency. Improved interior air quality is provided by a residential-style filter that is larger and easier to replace than foam pad filters used on most roof-mounted A/C units. For more precise comfort, airflow volumes to specific areas are easily regulated to accommodate personal preferences, with individual ceiling-mounted vents that adjust for both airflow and direction.


Choose the available Home Comfort Plus Package, which includes a heat pump for a convenient source of heat on cool mornings without starting the LP-fueled furnace.

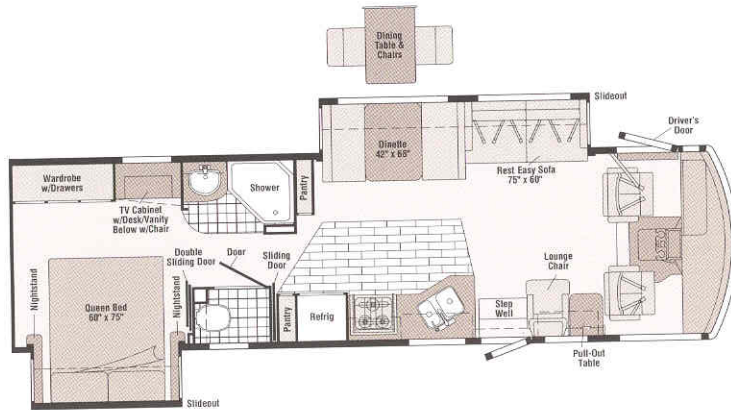
TRUEAIR
RESIDENTIAL CENTRAL AC

FLOORPLANS



31Y

- Dinette/couch **STOREMORE** slideout system
- Rear bedroom slideout with large wardrobe and desk/vanity area
- Movable hoop-base lounge chair
- Split bath design.
-  Multi-Position Lounge



33V

- Dinette/couch **STOREMORE** slideout system
- Rear bedroom slideout with large wardrobe and desk/vanity area
- Split bath design w/private toilet area
- Two pull-out pantries in galley
-  Multi-Position Lounge

INTERIORS



Beige Marble



Blue Willow



Estate Green



Vinyl Floorcovering



Woodgrain Vinyl Plank Floorcovering



Seat Belts

Note: Dimensions shown are for sleeping space only and may vary due to styling differences. Dashed lines denote overhead storage areas.

EXTERIORS



Medium Titanium Metallic



Opal Blue Metallic



Sand Metallic

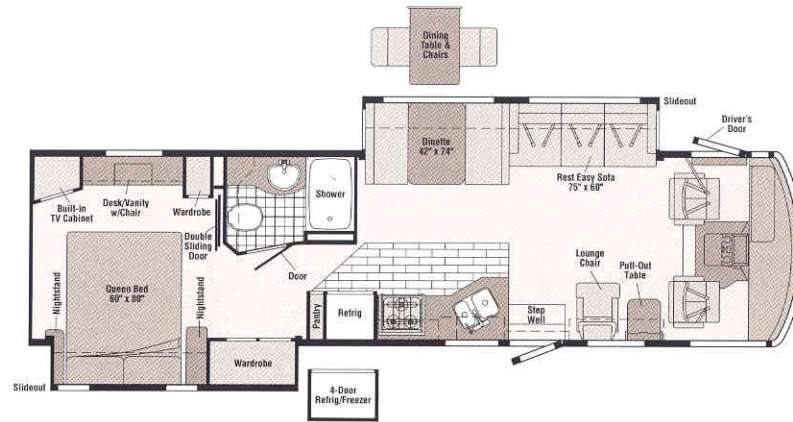
All colors are DuPont FlexShield™ basecoat/clearcoat, which provides a low-maintenance, high-gloss, automotive finish with maximum durability and chip resistance.



Concert Cherry Woodgrain

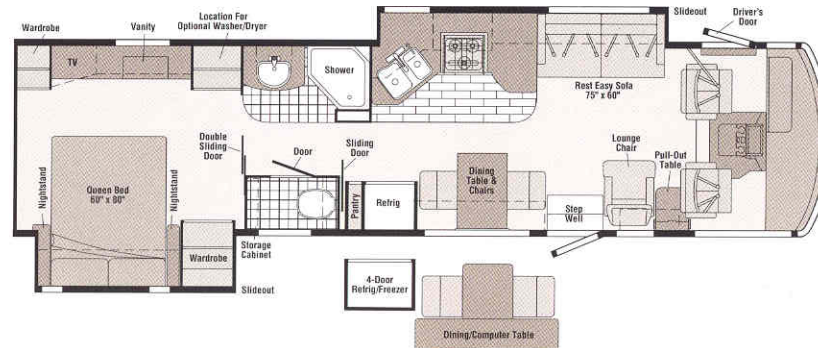


Portsmouth Oak Woodgrain



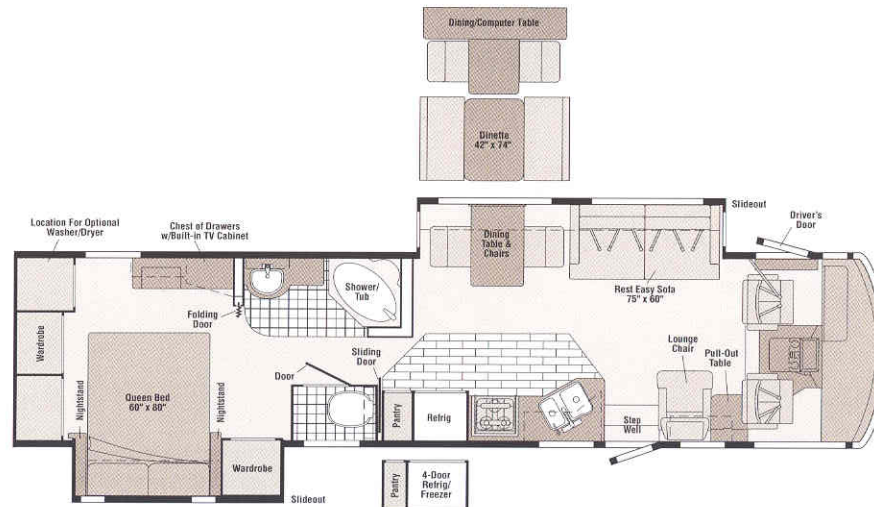
35U

- Dinette/couch **STOREMORE** slideout system
- Rear bed/wardrobe slideout with large vanity
- Movable hoop-base lounge chair
- **Rest Easy** Multi-Position Lounge



37C NEW
Available January 2003

- Galley/couch **STOREMORE** slideout system
- Bedroom/wardrobe with vanity
- Spacious split bath with shower and private toilet area
- **Rest Easy** Multi-Position Lounge
- Available washer/dryer



38G

- Dinette/couch **STOREMORE** slideout system
- Rear bed/wardrobe slideout with vanity
- Spacious split bath with tub/shower and private toilet area
- Movable hoop-base lounge chair
- **Rest Easy** Multi-Position Lounge
- Available washer/dryer



The outside story.

Adventurer's redesigned front and one-piece rear fiberglass cap and stainless steel wheel liners add a touch of class. Standard and available Ford and Workhorse chassis ranging from 20,500 to 22,000-lb. gross vehicle weight ratings let you tailor your coach to perfectly fit your driving and towing requirements. Choose the 22.5-inch tires available on the 35U, 37C and 38G for diesel-pusher-like look and ride performance.

2003 Winnebago Adventurer® Specifications

	31Y	33V	35U	37C	38G
Length	31'7"	33'7"	35'7"	37'4"	38'2"
Exterior Height* – Ford®/Workhorse™	11'4"/NA	11'4"/11'7"	11'4"/11'5"§/11'8"~/11'9"®	11'4"/11'8"~/11'11"®*	11'4"/11'8"~/11'11"®
Exterior Width ^Δ	8'5.5"	8'5.5"	8'5.5"	8'5.5"	8'5.5"
Exterior Storage [∞] (cu. ft.)	52.7	60.4	87.7	84.4*	84.4
Interior Height	6'8"	6'8"	6'8"	6'8"	6'8"
Interior Width	8'	8'	8'	8'	8'
Fresh Water Capacity w/Heater (gal.)	90	90	90	90	90
Holding Tank Capacity – Black/Gray (gal.)	45/41	52/45	40/54	53/55*	53/55
LP Capacity [∇] (gal.)	28	28	28	28	28
Fuel Capacity – Ford & Workhorse (gal.)	75	75	75	75	75
GCWR – Ford//Workhorse (lbs.)	26,000//NA	26,000//26,000	26,000//26,000	26,000//26,000	26,000//26,000
GVWR – Ford//Workhorse (lbs.)	20,500//NA	20,500//20,700§	20,500†/22,000†/20,700§/22,000~/22,000®	22,000//22,000~/22,000®	22,000//22,000~/22,000®
GAWR – Front, Ford//Workhorse (lbs.)	7,000//NA	7,000//7,500	7,000†/7,500†/7,500§/8,000~/8,500®	7,500//8,000~/8,500®	7,500//8,000~/8,500®
GAWR – Rear, Ford//Workhorse (lbs.)	13,500//NA	13,500//13,500~	13,500†/14,500†/13,500§/14,500~/15,000®	14,500//14,500~/15,000®	14,500//14,500~/15,000®
Wheelbase	190"	208"	228"	248"	248"

† = Ford Standard Chassis ‡ = Ford Optional Chassis § = Workhorse Chassis Option 1PN with 19.5" tires ~ = Workhorse Chassis Option 1PR with 19.5" tires ® = Workhorse Chassis Option 1PS with 22.5" tires

Standard - S Optional - O

31Y 33V 35U 37C 38G

31Y 33V 35U 37C 38G

AUTOMOTIVE/CHASSIS

see chart above for weight ratings and tire sizes

Chassis - Ford 6.8L Super-Duty V10 SOHC Triton™ engine, 310-hp, 4R100 electronic 4-speed overdrive transmission, 130-amp. alternator, 4-wheel anti-lock brakes	S	S	S	S	S
Chassis - Workhorse 8.1L Vortec V8, 340-hp, Allison® 1000 5-speed electronic overdrive transmission, 145-amp. alternator, 4-wheel anti-lock brakes		O	O	O	O
Leveling Jacks hydraulic, manual touchpad w/chime, Tire spare , (NA with Workhorse Option 1PS) Tire Tool wrench, Trailer Hitch □ 5,000-lbs. drawbar/350-lbs. maximum vertical tongue weight* & wiring, Wheel Liners stainless steel	S	S	S	S	S

CAB AREA & DRIVER CONVENIENCES

Cab Seats (fabric) w/3-point adjustable seat belts, armrests, multi-adjustable swivel/slide/recline, Cab Sound Control Package , Cigarette Lighter/12-Volt Powerpoint , Compass electronic w/outdoor thermometer, Convenience Tray , Cruise Control , Door driver w/power window, assist bar, KeyOne (common key w/entrance door & exterior storage compartments), Courtesy Light , Curtain front wraparound, pleated w/wands, Driver Door trim panel w/beverage holder, power mirror controls, Floor Mats carpet driver & passenger, Map Lights , Shades light filtering, cab windows, Shelf passenger side w/beverage holder, storage, powerpoint, Steering Wheel tilt w/power assist, Sunvisors (2) , Window (passenger) full-slider w/screen, Windshield Wipers intermittent	S	S	S	S	S
Cab Seats leather seating surface w/manual lumbar support	O	O	O	O	O
Cab Seat Pedestal 6-way power assist (driver)	O	O	O	O	O
Cab Seat Pedestal 6-way power assist (driver & passenger)	O	O	O	O	O
Defroster Fans (2) auxiliary 2-speed w/instrument panel switch	O	O	O	O	O
Monitor System rearview w/single camera & 1-way audio, Sony	O	O	O	O	O
Workstation in dash	O	O	O	O	O

ENTERTAINMENT

CB Prep antenna, antenna lead, 12-volt powerpoint, Entertainment Center (Exterior) w/Cassette* DC receptacle, AC duplex receptacle, AM/FM radio, exterior antenna jack, TV jack, radio antenna, speakers (2), lockable compartment, removable table, www.winnebago.com	S	S	S	S	S
(Cab) AM/FM stereo cassette/CD w/weather band, roof-mounted flexible rubber antenna, speakers (4), Radio Power Switch main/auxiliary battery, Satellite System Ready , Telephone input & interior jack(s), TV 19" Color AC w/remote, bedroom, TV 25" Color AC w/remote, TV Enhancement Package antenna (amplified), interior jacks, coax wiring, cable input, antenna check reminder light, Video Selection System					
Compact Multi-disc Changer Sony	O	O	O	O	O
DVD* (digital video disc) player	O	O	O	O	O
Entertainment Center (Exterior) w/CD Player*	O	O	O	O	O
Radios (4) two-way	O	O	O	O	O
Satellite Dish Antenna Winegard®, RV digital, elevation sensing unit	O	O	O	O	O
Sound System Deluxe w/QSurround™ TV 25" stereo color AC, stereo VCR, amplifier, speakers (5), sub-woofers (2)	O	O	O	O	O
VCR* w/remote	O	O	O	O	O

INTERIOR

Ceiling fabric, Clock , Lights ceiling, incandescent, bath, bedroom w/wall switches, Lights fluorescent, recessed, galley, lounge w/wall switches, Lights reading, Mirror , Shades day/night pleated	S	S	S	S	S
Accessory Package rechargeable flashlight, rechargeable vacuum cleaner	O	O	O	O	O
Light decorative oval				S	
Light wall lamp (lounge area)			S	S	S

Standard - S	Optional - O	31Y	33V	35U	37C	38G
Picture					S	
Windows dual-glazed/thermo-insulated		O	O	O	O	O
CABINETS						
Woodgrain Portsmouth Oak stile-and-rail construction w/raised panel inserts		O	O	O	O	O
Woodgrain Cherry stile-and-rail construction w/raised panel inserts		O	O	O	O	O
FLOORCOVERING						
Carpeting w/pad, Vinyl bath, Vinyl Plank galley		S	S	S	S	S
FURNITURE						
Lounge Chair* (Fabric) w/cabinet & table w/magazine rack, hoop-base, recliner, rocker, footrest, RestEasy ® Multi-Position Lounge (Fabric) w/throw pillows		S	S	S	S	S
BenchMark Full Comfort Dinette access to storage below		S	S	S	O	
Dining Table & Chairs* (2) free standing, (2) folding		O	O	O	S	S
Multi-Purpose Table & Chairs* (2) free standing, (2) folding					O	O
Lounge Chair (Leather) hoop-base		O	O	O	O	O
RestEasy ® Multi-Position Lounge (Leather)		O	O	O	O	O
GALLEY						
Coffeemaker, Countertops solid surface, Faucet single-control, Light fluorescent, under cabinet, Microwave Oven Sharp®, Range three-burner w/large oven, glass door, recessed, sealed burners, Amana®, Range Cover, Refrigerator/Freezer large double-door, Norcold®, Roof Vent powered ventilator fan, Sink double-bowl molded w/sink covers (countertop material), Wall Border, Wastepaper Basket, Water Purification System w/separate faucet		S	S	S	S	S
Countertop Flip-up Extension		S	S	S		S
Microwave/Convection Oven Sharp		O	O	O	O	O
Pantry w/adjustable shelves (33V w/dual pantries)			S	S	S	S
Range Top three-burner w/storage below, recessed, sealed burners, Amana		O	O	O	O	O
Refrigerator/Freezer large double-door w/ice maker, Norcold		O	O	O	O	O
Refrigerator/Freezer* four door w/ice maker, Norcold				O	O	O
Utility Tray tip-out						S
BATH						
Cabinet lavatory, Cabinet medicine, Faucet (lavatory) single-control, Faucet (shower) single-control w/ixed showerhead, Hair Dryer wall-mounted w/night-light, Light shower, Lights makeup, Roof Vent power, Shower Door textured glass, Shower Skylight, Sink oval, Tissue Holder, Toilet (Porcelain) w/foot-pedal flush & sprayer, Towel Rack 3-rod, mounted to door		S	S	S	S	S
Cabinet linen				S		
Magazine Rack		S		S		S
Mirror		S		S		
Robe Hook		S			S	S
Shower		S	S	S		
Shower w/removable clothes rod				S		
Shower/Tub						S
Wall Border		S	S		S	
Showerhead hand-held		O				O
Shower Package hand-held showerhead, fold-down bath shower seat			O	O	O	
Towel Bar		S		S	S	S
Towel Ring(s)		S	S		S	S
BEDROOM						
Bed queen, Serta, innerspring mattress, w/underbed storage, Bedspread, pillows, throw pillow, Ceiling Molding, Headboard, Lights decorative wall lamps (2), Nightstands (2), Powerpoint 12-volt DC receptacle(s), Vanity Cabinet w/fold-up countertop, folding chair, Wall Border, Wardrobe Cabinet carpeted floor, clothes rod, drawers, light, shelves (37C, 38G)		S	S	S	S	S

Standard - S	Optional - O	31Y	33V	35U	37C	38G
Hamper tip-out					S	S
Mirror backwall w/wood frame		S	S	S	S	

EXTERIOR

Awning* patio, Awning Rails w/rain gutters, Door entrance w/separate screen door, deadbolt lock, Door fuel-fill, locking, Entrance Door Steps electric w/doorjamb switch, Exterior Graphics Packages Sand Metallic recommended w/Beige Marble & Estate Green, Or Opal Blue Metallic recommended w/Beige Marble & Blue Willow, Ladder, Lights fog lamps, Light porch light w/interior switch, Light driver side service, Mirrors electric/remote w/defrost, Mudflaps rear, Receptacle AC duplex, Sidewall Skin one-piece smooth fiberglass, high-gloss, Storage Compartments smooth valance panels, trunk liner, gas struts, Tri/Mark KeyOne System, paddle latch, lights		S	S	S	S	S
Awning* patio, electric w/wind sensor and remote		O	O	O	O	O
Undercoating Workhorse			O	O	O	O

SYSTEMS

Automotive Heater/Air Conditioner, Auxiliary Start Circuit, Batteries (Coach) (2) deep cycle, group 24, Battery (Coach) disconnect system, Battery Charge Control automatic dual, Drain 1" water tank, Electrical Distribution System AC & DC breaker panels, 45-amp, electronic converter/charger, Generator 5,500 watt, Onan Marquis Gold, gas, Generator/Shoreline Automatic Changeover Switch, ONEPLACE® Systems Center wall-mounted, battery digital voltmeter, energy management display, generator hourmeter gauge, generator start/stop switch, holding tank levels, LP tank level, solar panel/battery charger light, water heater switch & lights, water pump switch & light, water tank level, Power Cord 30-amp., POWERLINE® Energy Management System, Service Center (Drainage/Water) city water hookup/tank diverter fill, drainage valves, exterior wash station w/pump switch, 10' sewer hose, Service Center (Electrical) cable input, power cord, telephone input, Solar Panel 10 watt w/battery charger, Tank flushing system, black tank only, Tank holding, heated compartment, Tank LP, permanent mount w/gauge, TRUEAIR® Central Air Conditioning System, Water Heater 10 gallon electronic ignition, 120 vac/LP gas w/Motoraid, Water Heater Winterization Bypass Valve manual, Wash Station exterior, Water Pump demand, Water System Winterizing Valve manual, Water Tank Fill gravity w/locking door, Water Tank Fill pressurized city hookup w/diverter valve		S	S	S	S	S
Furnace 35,000 BTU, low profile		S	S			
Furnace 40,000 BTU, low profile				S	S	S
Generator 7,000 watt, Onan Marquis Gold, gas		O	O	O	O	O
Home Comfort Plus Package central air heat pump, auxiliary automotive heater, insulated powered ventilator fans (bath & galley)		O	O	O	O	O
Inverter* DC/AC, 300 watt		O	O	O	O	O
Power Cord 50-amp.		O	O	O	O	O
Washer/Dryer Combination					O	O
Washer/Dryer Prep					S	S

SLIDEOUT

Slideout Room (bed 31Y, 33V & bed/wardrobe 35U, 37C, 38G)		S	S	S	S	S
Slideout Room (couch/dinette) w/slidoor cover, SlideMore ®		S	S	S		S
Slideout Room (galley/couch) w/slidoor cover, SlideMore ®						S

SAFETY

Assist Handle exterior, acrylic, Bumpers front & rear, Detectors/Alarms LP leak, smoke, carbon monoxide, Fire Extinguisher 10 B.C., Ground Fault Interrupter, Light center high-mount brake lamp, Light courtesy w/wall switch, Lights daytime running lamps, Window escape, Windshield laminated safety glass		S	S	S	S	S
Assist Bar interior		S	S	S	S	S

WARRANTY

12-month/15,000-mile basic limited warranty, 36-month/36,000-mile warranty on structure,** 10-year limited parts & labor warranty on roof skin		S	S	S	S	S
------------------------------------------------------------------------------------------------------------------------------------------------	--	---	---	---	---	---

* The height of each model is based on the curb weight of a typically equipped unit on the standard chassis. The actual height of your vehicle may vary by as much as 2" depending on chassis or equipment variations.
 † Adventurer floorplans feature a wide-body design — over 96". In making your purchase decision, you should be aware that some states restrict access on some or all state roads to 96" in body width. Before making your purchase decision, you should confirm the road usage laws in the states of interest to you. *Not all items available in combination. See dealer for details. NA = Not Available.
 ‡ Capacities shown are tank manufacturer's listed water capacity (W.C.). Actual filled LP capacity is 80% of listing due to overfilling prevention device on tank. **See your dealer for complete warranty documentation information.
 ∞ Your motor home's load capacity is designated by weight, not by volume, so you cannot necessarily use all available space when loading your motor home.
 □ Actual towing capacity is dependent on your particular loading and towing circumstances which includes the GVWR, GAWR and GCWR as well as adequate trailer brakes. Please refer to your vehicle's operator's manual for further towing information.
 * Measurements are based on the most recent information available. See your dealer for updated specifications.
 Winnebago Industries' continuing program of product improvement makes specifications, equipment, model availability and prices subject to change without notice. Comparisons to other motor homes are based on the most recent information available.

Not all motor homes are created equal.

As you take a closer look, you'll see that there is much more to the Winnebago Adventurer than a long list of standard features and compelling floorplans. Beneath it all you'll find a SuperStructure™ foundation of strength and durability, and Winnebago Industries' recognized service and warranty support.



We are committed to service.

We back our motor homes with the best after-the-sale service in the industry.

- 12-month/15,000-mile basic limited warranty
- 36-month/36,000-mile warranty on structure
- Standard 10-year limited parts-and-labor roof skin warranty
- Complimentary 24-hour Roadside Assistance Program
- TripSaver Fast Track Parts. TripSaver guarantees that in-stock warranty parts ship directly to your dealer within 24 hours
- Nationwide Dealer service network



Certified quality.

Recreation Vehicle Dealer Association members annually rate RV manufacturers on the quality of their products, and on their sales and service support. Winnebago Industries has achieved the coveted Quality Circle Award every year since its inception, the only major motor home manufacturer to do so.



Learn more about what sets Winnebago Industries apart.

Ask your dealer for this guide. It will help you learn what makes Winnebago Industries motor homes distinctly superior to other brands.

Warning: Joining WIT has been known to cause excessive fun.



Winnebago-Itasca Travelers (WIT) is a club for owners of Winnebago Industries motor homes. WIT is a great way to meet people and offers you:

- Caravans and rallies
- Local and state group activities
- Benefits for RVers

WINNEBAGO Built proudly by
WINNEBAGO
INDUSTRIES

©2002 Winnebago Industries, Inc., Forest City, IA 50436. Printed in USA.

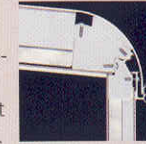
Seat belts are your most important hookup. Always buckle up.
Visit us at www.winnebagoind.com

SUPER STRUCTURE

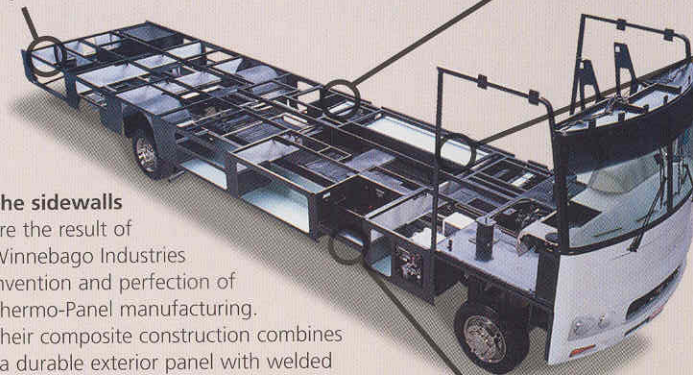
is the term given to Winnebago Industries' structural motor home design and construction. Rather than a single component, it is the culmination of design integration that incorporates steel and aluminum substructures, composite design laminated floor risers, interlocking joint technology, and Thermo-Panel® floor, roof and sidewalls to form a high-strength, durable vehicle body.

Interlocking joint construction

Utilizes advanced extruded aluminum structural components to create integrated floor-to-sidewall, and sidewall-to-roof joints. This design effectively distributes the weight of the walls and roof, making a stronger and more durable body than competitor designs that rely on screws to carry the weight.



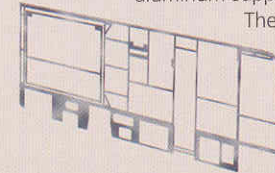
Laminated risers feature a welded aluminum core for superior strength and provide a stable base for the floor structure and storage compartments.



The foundation substructure assembly is precision-aligned to maximize strength and cross-coach support as well as durability.

The sidewalls

are the result of Winnebago Industries invention and perfection of Thermo-Panel manufacturing. Their composite construction combines a durable exterior panel with welded aluminum support substructures.



The substructures are embedded in a high-density block foam insulation core to create a strong, durable, yet light-weight sidewall.

Critical steel components are treated using an advanced electrodeposition coating process that provides superior corrosion protection.

Built to a higher standard.

Adventurer features a crowned, one-piece fiberglass roof backed with a 10-year limited parts-and-labor roof skin warranty. Fiberglass offers superior strength, attractiveness and durability over rubber roofs found on many competitive models. Over time, rubber roofs are susceptible to chalking, streaking and degradation, and have less puncture and tear resistance than fiberglass.



One-year-old competitor's rubber roof



One-year-old Winnebago Industries fiberglass roof