

*alpha*  
Gives You More!

*Traveling your way!*

*Equipping you more!*

*Everything you've dreamed about!*



*See Ya!*



*See Ya! Founder*



*See Ya! Gold*

# Now there are three!

*'From the beginning, an Alfa RV was designed by RV'rs for RV'rs. With three Alfa motorhomes to choose from, we have met the budget, needs and wants of every avid motorhome owner.*



4 ~ 9



10 ~ 17



18 ~ 25



Foundation

26 ~ 29



Features

32 ~ 34

2

From the desk of Johnnie Crean

When we introduced the Alfa See Ya! it became an overnight sensation. I remember my dad taking out one of the very first units; he was so proud of me and what Alfa had accomplished. He drove it cross country from California to New York, arriving there on September 13, 2001. Parked across the harbor at Liberty Harbor RV Park, he could see the Statue of Liberty on his right and the plumes of smoke from the Twin Towers on his left. In his words, "It was America's worst moment while I was in the perfect example of the best America had to offer." America recovered and the See Ya! led the way, becoming number one in sales for most of its markets.

As an avid RVer, the See Ya! was designed by me, for me, but I'm a gadget and electronics kind of guy and wanted even more, so I designed the See Ya! Gold. It's for those who want it all but don't want to spend a lot for it and again we had a hit. My dad took one of those out, too and while he liked it, he kept saying that we should simplify it's design for people who didn't want a lot of gadgets and stuff.

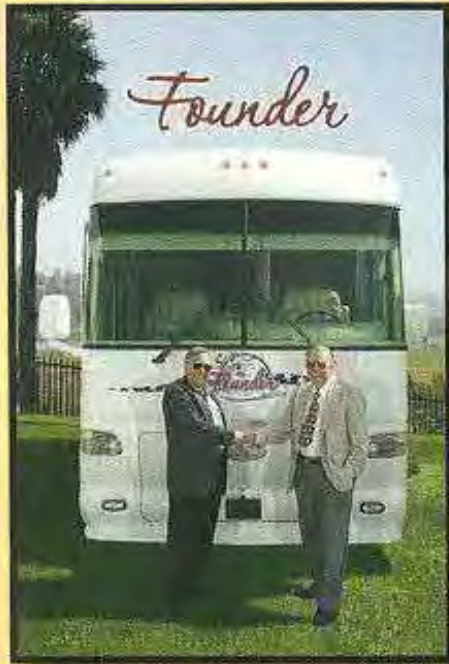
So with my dad's help, we began work on what my dad considered the 'perfect coach'. Over three years we built and tested five prototypes before my dad said that's the coach he would put his name on. And that brings us to the Founder—the same incredible features that made the other two famous but designed for a quieter, simpler lifestyle.

Three great motorhomes to choose from; each one, the best value for your money. Whatever your lifestyle, there's a See Ya! for you.

Johnnie Crean



## Alfa has kept it simple - one great floorplan-



Introducing the all new See Ya! Founder. Built on the foundation of the Alfa See Ya!, the Founder caters to those who prefer a simpler lifestyle—less electronics and gadgets—just all the basics to make your RV experience the best there is.

John Crean (founder of the largest RV company there ever was) and son, Johnnie Crean (founder of Alfa) designed the Founder together, using their collective knowledge and experience to create the most well thought out motorhome on the market today – at an incredibly low price.

The original Alfa See Ya! is still one of the most sought after motorhomes in America. Fully equipped for both comfort and luxury, the See Ya! is a must for full-time RV'rs. From its incredible entertainment package, operated by a single remote, to its CAT 350 hp engine, the See Ya! is equipped with a whole list of standard features that would cost you thousands more if you bought from someone else.



### Something for Everyone



The most fully equipped motorhome to be had at any price is available to you for a most reasonable price. Equipped for complete luxury and livability, the See Ya! Gold has it all: Cummins 400 HP engine, 150 gallon fuel tank, cell phone, computer, printer, heated floor tiles, Hydro-hot heating system and much, much more. You could pay more for another motorhome but you'd still get less.

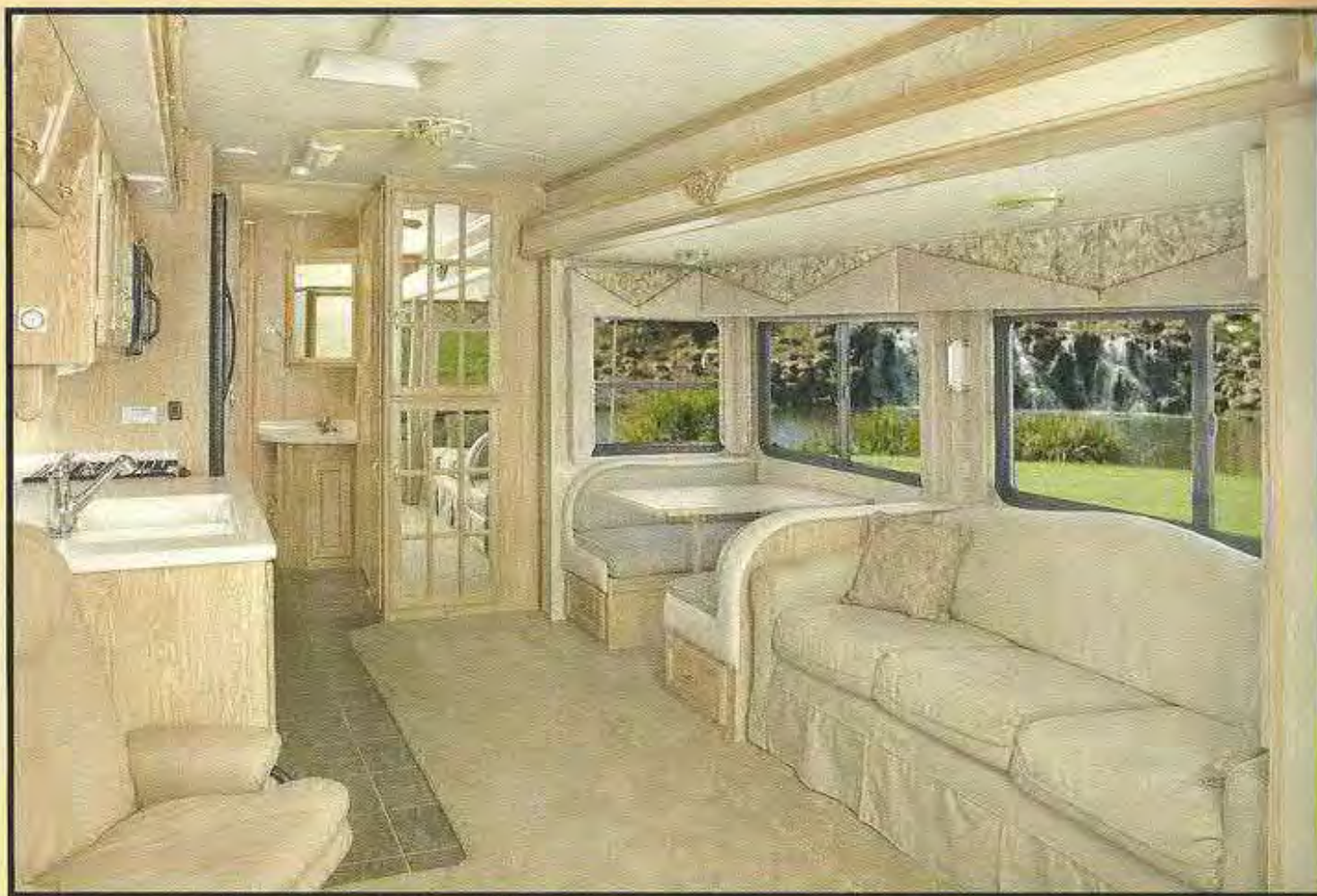
*No matter which Alfa motorhome is right for you, they all come with 7'6" interior ceilings, the tallest, deepest slide out in the industry—6'2" tall, 42" deep, incredible storage both inside and out, abundant windows, 27,000 btu basement air, a Freightliner chassis and no expensive options; everything you need comes standard.*



# Everything You Need

Im

The Founder has the best the See Ya! has to offer - 7' 6" interior ceilings, a 42" deep, 6' 2" tall slide out, full sized closet, Freightliner Chassis, basement air and huge storage areas throughout. It's built for those who prefer a simpler lifestyle - easier to use electronics, soft comfortable fabrics and storage space that you can customize to your own needs. Whether you enjoy the journey, the destination or both - the Founder is right for you.



The Founder was designed for comfort and livability - from the plushness of the Touchable décor to the quality flooring and carpet, abundant windows and storage and our signature slide out fishing rod storage.



# In A Great RV



A fully equipped cockpit makes driving a breeze!

"I prefer a simpler lifestyle; playing cards or cooking with my wife, Donna. If you are of the same lifestyle as me, then the Founder is the perfect coach."

John C. Crean



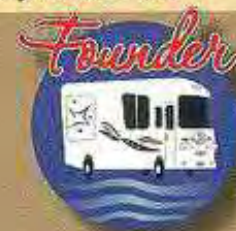
Leather euro recliner with footstool and fold away card table



Beautiful Valances with a hidden surprise - they lift up to reveal even more storage.



Overhead entertainment center features a 27" TV and combo VCR/DVD player





# A Simple Approach To

**Our galley is engineered for practicality and convenience**

- Roomy solid surface countertops
- Extra wide drawer pulls
- 3 - burner range with oven
- Convection microwave
- Alfa exclusive interior/ exterior trash can
- Plentiful storage cabinets
- 22 cf side-by-side residential refrigerator/ freezer w/ in-door ice maker and water dispenser
- Convenient single lever faucet
- Oak paper towel holder
- Large galley window
- Deep porcelain sinks
- Water filter dispenser
- Chopping block sink cover
- Knife rack



Alfa's classic galley with spacious solid surface countertops, Alfa's exclusive interior/ exterior trash can system and plentiful storage meets all your cooking needs.

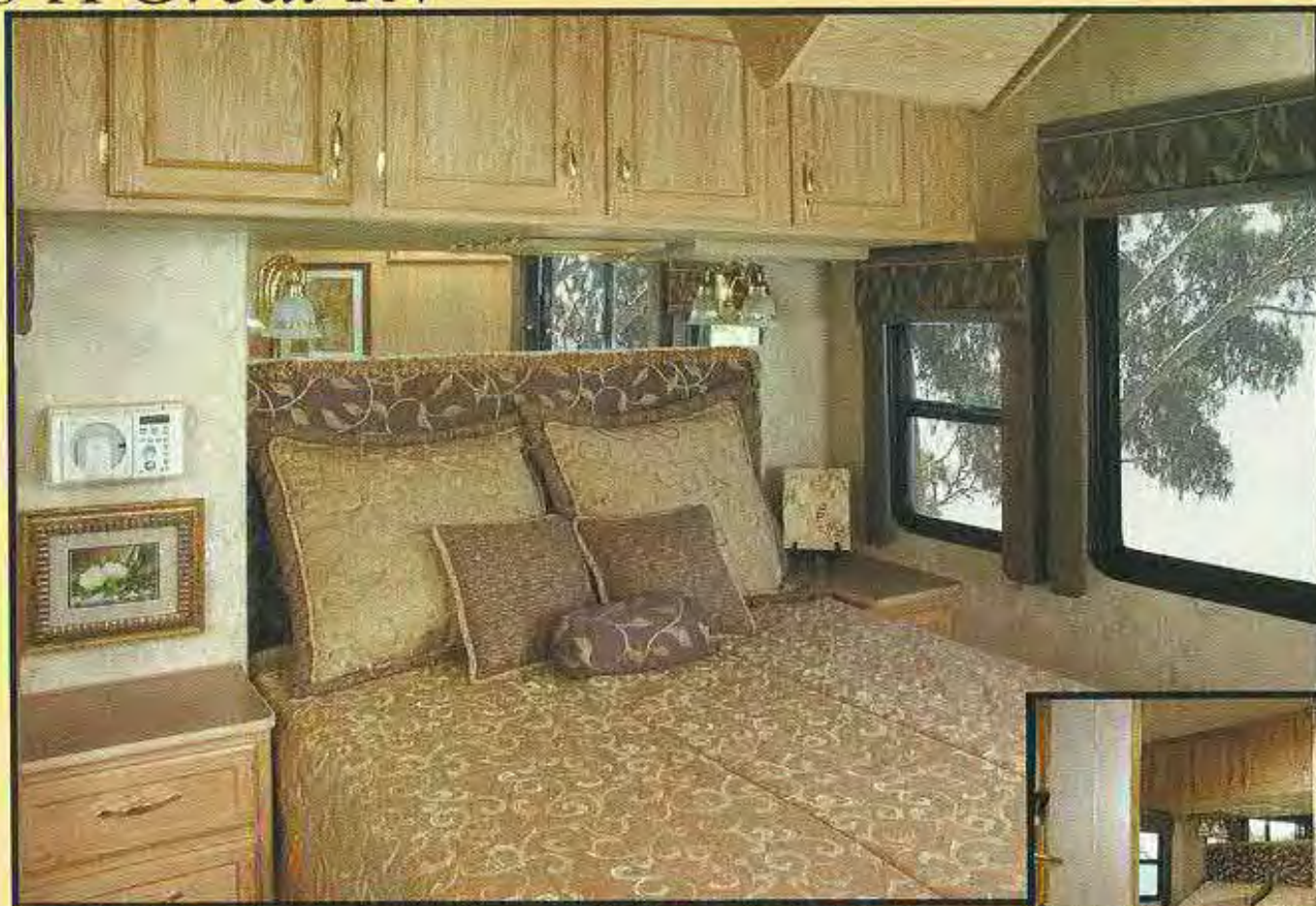


Our exclusive interior/ exterior trash can system.



Spacious 22 cf, side-by-side residential refrigerator/ freezer with in-door ice maker and water dispenser,

# To A Great RV



Indulge yourself in the splendor of our master suite. With beautiful bedding, an overhead TV, CD Player/clock radio, abundant storage and cedar lined closets, you may never want to leave.

Hide-away  
bedroom  
outlets



Large medicine  
cabinet with mirror



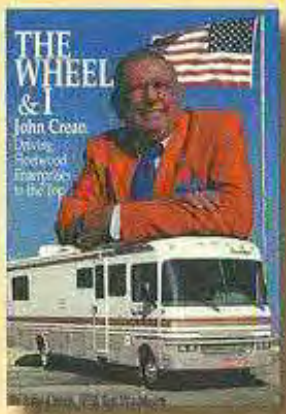
Dual pane skylight  
with shade in shower



Full-sized cedar lined wardrobe  
with plentiful drawer space



# That's Entertainment!



Your very own copy of "The Wheel and I" by John Crean is FREE with the retail purchase of the new Alfa Founder

Born on the fourth of July, son of immigrants, founder of the largest RV company that ever was, recipient of the Horatio Alger Award and father of Johnnie Crean (Alfa's founder), John Crean's influence over the RV industry has been far reaching.

Read his riveting story for yourself. The story of John C. Crean is the story of the American Dream - "a truly self-made man"



13" Overhead Bedroom TV



Bedroom CD Player / Clock Radio



Sirius Satellite Radio with complimentary one year subscription



27" Overhead TV



Combo VCR/ DVD player

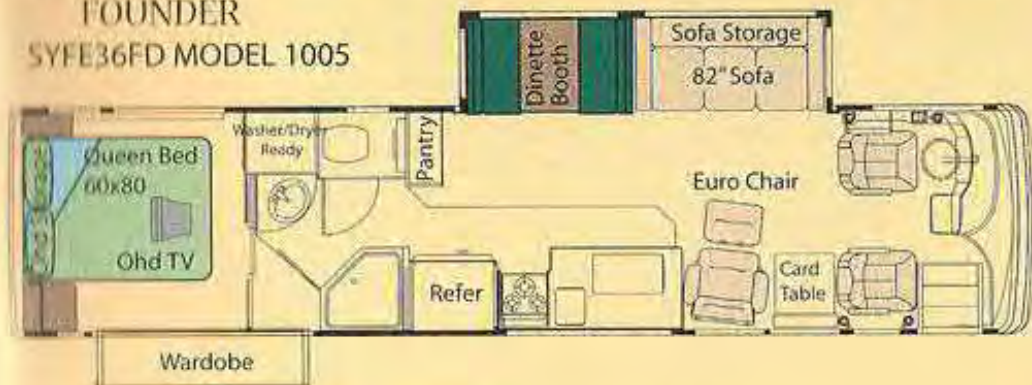
The Founder entertainment package also includes surround sound, roof-mounted satellite dish and pre-wired for receiver and basement entertainment.



# 2005 Founder Floorplan

See Ya!

FOUNDER  
SYFE36FD MODEL 1005



The See Ya  
has it all!



Living room pillows



Dinette booth



Sofa



Euro recliners



Living area valances



Bedding & shams



Valances & headboard

## MEASUREMENTS

WHEEL BASE	228"
OVERALL LENGTH	37' 9"
OVERALL HEIGHT*	13' 1"
INTERIOR HEIGHT	7' 6"
INTERIOR WIDTH	95"
EXTERIOR WIDTH	102"

## TANK CAPACITIES

WATER HEATER (GAL)	10
GRAY TANK (GAL)	75
BLACK TANK (GAL)	40
FRESH WATER (GAL)	100
LP TANK (GAL)***	25
FUEL TANK (GAL)	90

\* Heights may vary due to vehicle loading

\*\* All weights, measurements and capacities are approximate at time of printing

\*\*\* Actual filled LP capacity is 80% of listing due to safety shut off required on tank





# Everything You Want

The 2005 See Ya! is the picture of excellence. Instead of rolling out the gate, it roared out - and in two short years reached number one in most of its markets. Carefully engineered right from the start, the See Ya! has undergone few changes from its debut until now - you have found your new home.



Incredible beauty in a completely livable and functional home complete with leather furniture, residential style lighting, luxurious fabrics and a great view.

# *In The Alfa See YA!*



Our dash is conveniently designed with everything at your fingertips and a lift-up dash pod for easy component access.



Convenient electric & manual sun visors and an articulating overhead swings out for easy component access.



Our popular fishing rod storage shelf.



Optional J-Lounge.

Standard features that are far from ordinary.

Alfa knows that sometimes you deserve a little more and we've added them for you - leather upholstery, electric and manual sun visors, our popular fishing rod storage shelf, an awesome galley, an incredible entertainment system and more, more, more.

Standard because they're included in the price.

Luxurious because you deserve it.





# A galley like no other

- Roomy solid surface countertops
- Extra wide drawer pulls
- 3 - burner range with oven
- Convection microwave
- Alfa exclusive interior/ exterior trash can
- Plentiful storage cabinets
- 12 cf 4-door RV refrigerator/ freezer w/ in-door ice maker
- Oak raised panel refrigerator door
- Solid oak raised panel cabinet doors
- Oak dinette table w/ leaf
- Ceramic tile floor
- Convenient single lever faucet
- Oak paper towel holder
- Large galley window
- Deep porcelain sinks
- Water filter dispenser
- Chopping block sink cover
- Knife rack



A fully equipped galley complete with solid surface countertops, convection microwave, 3 burner range top and oven and so much more.



12 Cubic Ft. 4 door refrigerator /freezer with ice maker.



Dinette booth option.



Washer / dryer combo.

*Look at this entertainment package-  
all operational with one remote control!\**



27" flat screen overhead TV.



13" galley slave TV.



13" TV/DVD combo in  
bedroom.



19" patio TV.



Entertainment center w/ DVD/VCR  
combo, 8 speaker surround sound  
audio and 500-watt auxiliary  
amplifier.



Additional entertainment features include  
automatic satellite dish system and portable satellite.

• Easy to use touch screen.

• Total operating control of all  
your audio/video equipment.

• Preprogrammed by Alfa to automatically  
work with all your equipment.

\*Also standard on See Ya Gold w/upgraded Gold entertainment features.  
Not available with the Founder.



Sirius radio:  
Satellite radio at its best!

- Includes all your equipment and a one year subscription.
- 100% commercial free satellite radio.
- Over 60 channels of commercial free music.
- Includes sports, news and entertainment.
- The official satellite radio of the NFL: Get every game, every where, every week.
- Standard in the Founder, See Ya! and See Ya! Gold

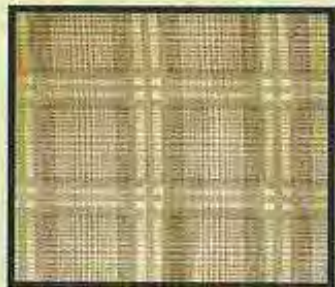
**SIRIUS**





# How Suite It Is!

*Our beautiful  
bedroom fabrics*



Our master bedroom is practical and beautiful. Plentiful windows and mirrors, a deluxe queen size bed and a full size cedar lined closet conveniently located in the slide out for easy access even when the slide outs are in.



Overhead 13"  
TV / DVD combo



Spacious cedar lined closet with  
plentiful storage drawers.



Mirrors, medicine cabinet, single lever  
faucet for a home like vanity.



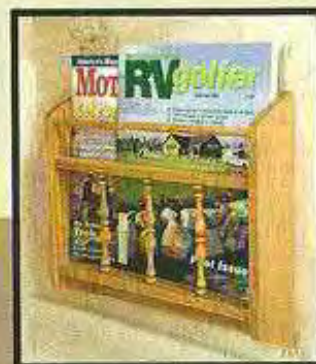
Spacious shower with  
overhead light and grab  
handle for secure footing.



Height adjustable  
massage shower head.



Porcelain toilet.



Handy magazine rack.





## White Gold



Pillows/Valances



Dinette/Valances



Valances



White Gold/  
Harvest carpet

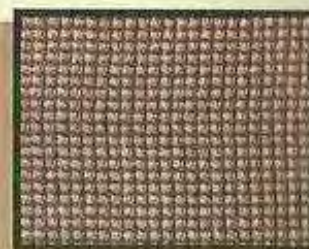
Harvest



Dinette



Valances



Pillows/Valances

## 2005 See Ya! Floorplans

36'

### WEIGHTS\*\*

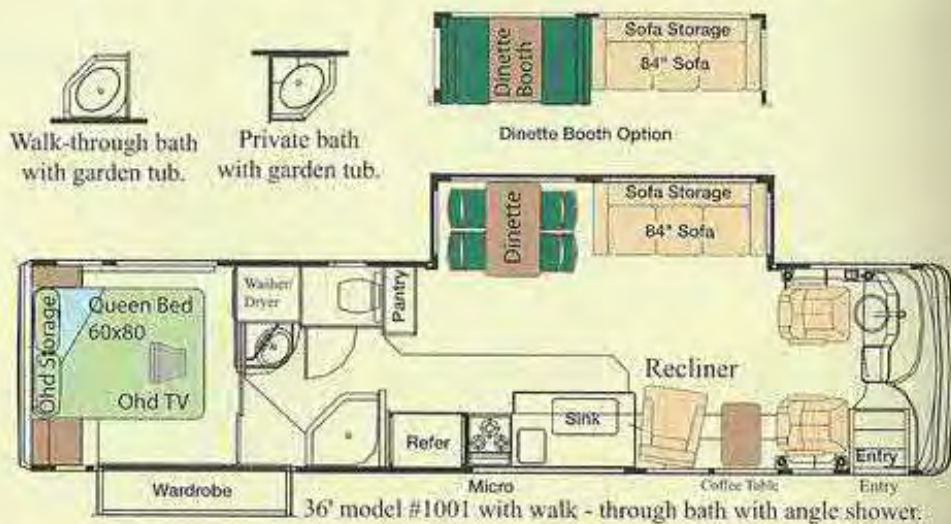
Unloaded vehicle weight UVW (lbs)	26,361
Gross vehicle weight Rating GVWR (lbs)	32,000
Gross combined weight Rating GCWR (lbs)	42,000
Front gross axle weight Rating (lbs)	12,000
Rear gross axle weight Rating (lbs)	20,000

### MEASUREMENTS

Wheelbase	228"
Overall length	37'9"
Overall height*	12'5"
Interior height	7'6"
Interior width	9'5"
Exterior width	10'2"

### TANK CAPACITIES\*\*

Water heater (gal)	10
Gray tank (gal)	75
Black tank (gal)	40
Fresh water capacity (gal)	101
Fuel tank (gal)	100
L.P. tank (gal)***	38



36' model #1001 with walk-through bath with angle shower.  
Living room option #1



Private bath option with angle shower.



Living room option #2



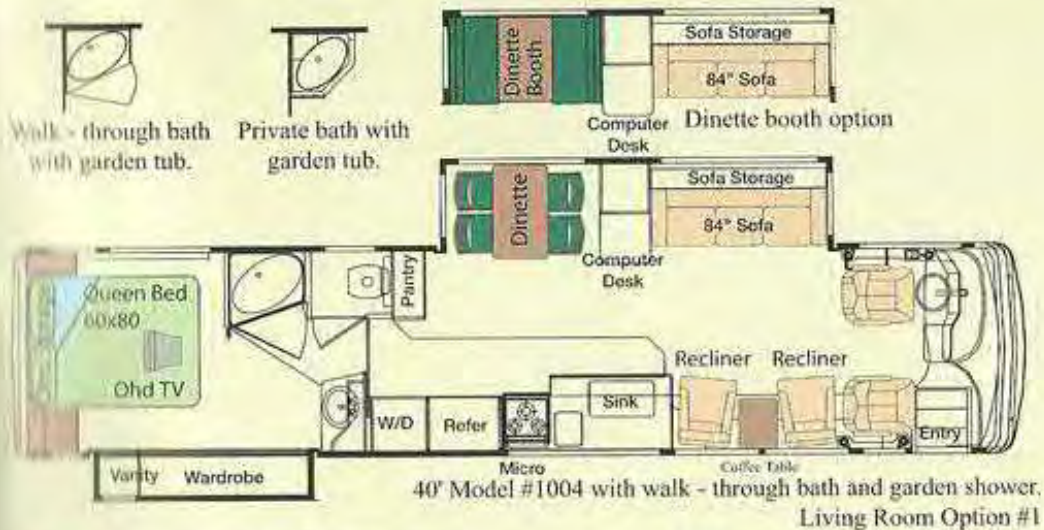
Living room option #3

\* Heights may vary due to vehicle loading  
 \*\* All weights, measurements and capacities are approximate at time of printing  
 \*\*\* Actual filled LP capacity is 80% of listing due to safety shut off required on tank

Three Decors  
To Choose From:



# 2005 See Ya! Floorplans



Private Bath Option with angle shower.

† Heights may vary due to vehicle loading

\*\* All weights, measurements and capacities are approximate at time of printing

\*\*\* Actual filled LP capacity is 80% of listing due to safety shut off required on tank



Ceramic tile  
All decors



Carpet

## Afternoon Tea



Pillows



Dinette/Valances



Valances

### 40' WEIGHTS\*\*

Unloaded vehicle weight UVW (lbs)	26,722
Gross vehicle weight Rating GVWR (lbs)	32,000
Gross combined weight Rating GCWR (lbs)	42,000
Front gross axle weight Rating (lbs)	12,000
Rear gross axle weight Rating (lbs)	20,000

### MEASUREMENTS

Wheelbase	252"
Overall length	39'11"
Overall height*	12'5"
Interior height	7'6"
Interior width	95"
Exterior width	102"

### TANK CAPACITIES\*\*

Water heater (gal)	10
Gray tank (gal)	75
Black tank (gal)	40
Fresh water capacity (gal)	101
Fuel tank (gal)	100
L.P. tank (gal)***	38



# Everything You've Dreamed About In

GOLD



## The ultimate in features

- New! Copilot Live™ Advanced RV GPS navigational system.
- Enhanced RV routing incorporates 12' 6" height restrictions on highways, avoids u-turns, sharp turns, narrow roads and dense urban streets whenever possible.
- The "enable propane restrictions" option will give routes which completely avoid tunnels that prohibit propane tanks.
- Spoken, turn-by-turn directions to any address.
- 3D map display mode & ETA.
- Quickest, shortest, RV & toll avoidance routing.
- Over 3 million point-of-interest spots including Wal-marts, health centers and RV/truck stops.
- Computer system w/ wireless keyboard, mouse and software.
- Photo quality printer w/ memory card slots.
- Color back up camera w/ infrared night vision.
- Flat screen multi-purpose monitor for computer, GPS and back up camera.
- Hands-free cell phone w/ wireless internet capability.
- Preprogrammed universal remote controls your entire entertainment package.
- 27" Overhead flat screen TV.
- Two satellite receiver dish PVR's (personal video recorders) with 60 hr. combined recording time in living area and bedroom.
- Dual LNB in motion satellite dish antenna on roof.
- Dual LNB portable satellite dish antenna.
- Sirius™ satellite radio including equipment and a one year subscription.
- In-dash stereo with 6 disc CD changer.
- Front/rear proximity sensors.
- Power visors on driver and passenger windows.



Relax in total comfort surrounded

by

# In The See Ya Gold!



Our spacious interiors are unmatched in beauty and livability.



Everything you need and more right at your fingertips: Sirius satellite radio, hands free cell phone, upgraded GPS navigational system and color back-up camera are just a few of our fabulous features. All standard.



27" flatscreen overhead TV with Dish PVR lets you decide how you watch TV. You can record and playback audio and video, pause a live program and not miss any of the action, or record a program for later without a VCR.



We use Ultraleather™ with the look and feel of the finest European calfskin.

by all the luxuries you deserve.



GOLD



## The ultimate chef's galley

- Side-by-side 14 cf 2-door RV refrigerator/ freezer w/ ice maker, halogen lighting and recirculating fans.
- Solid oak raised panel doors w/ hidden hinges.
- 21" 3 sealed-burner chrome stove top w/ electric ignition and oven.
- Solid surface stove top cover.
- GE Advantium™ oven and microwave.
- Solid surface granite-like countertop w/ stainless steel sink.
- Garbage disposal.
- Moen™ Monticello galley faucet w/ pull out sprayer.
- Heated ceramic floor tiles w/ decorative accents.
- Alfa's exclusive interior/ exterior trash can.



**The ultimate galley-as beautiful as it is functional.** Featuring a granite-like countertop, chrome sealed burner range top with stove cover and oven, GE Advantium™ oven and so much more!

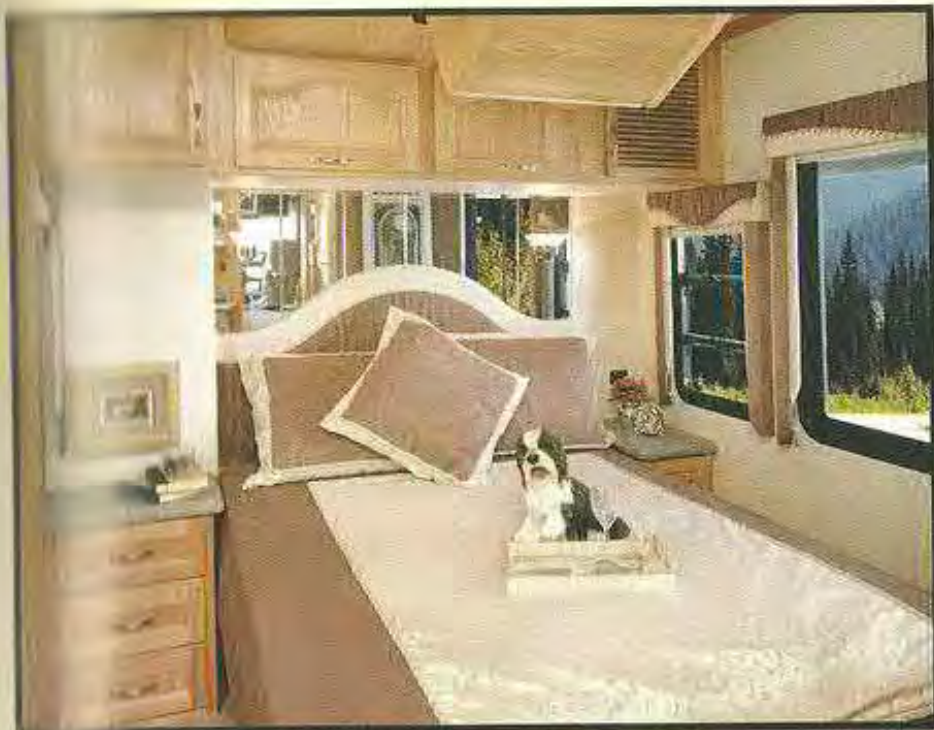


Alfa exclusive pass-through waste basket with interior / exterior access.

GE's Advantium oven uses high intensity halogen lights, microwave energy and sophisticated computer microprocessors.

- Revolutionary speed-cook technology cooks oven-quality food up to four times faster than conventional ovens.
- Bakes, browns, broils, grills and roasts-all with no preheating.
- Fully functional 950 watt sensor microwave oven.





The elegant master suite is designed for your ultimate comfort and livability complete with full sized cedar lined closet, queen sized deluxe inner spring mattress, overhead TV/DVD combo, solid surface nightstand tops, designer duvet with matching shams and an abundance of windows for light and ventilation.



Washer / Dryer  
combo.



Our huge shower with height adjustable massaging shower head, European style body care dispenser and three towel racks makes bathing a luxury.



Our mirrored medicine cabinet, granite-like solid surface countertop, chrome accessories, stainless steel lavy sink and Delta faucet create the ultimate lavy experience.



13" overhead TV/DVD  
combo with Dish PVR.



Side-by-side 14 cf  
RV refrigerator/ freezer  
w/ ice maker.



**GOLD**



GOLD

# Have Computer - Will Travel



Hands free cell phone with cradle and microphone mounted in dash.



400 Watt inverter isolated for computer use only.



Photo quality printer.



Desktop style on-board computer in front overhead with Microsoft Office XP software package including Word, Excel, Access and more.



Wireless keyboard with radio frequency allows for use on all coach TV's. The on-board computer can be displayed on any of the four TVs and the non-line of sight wireless keyboard & mouse can be used up to 100 feet away from its receiver.



Upgraded RV friendly GPS navigational system



In-motion cellular internet with email capability.



Color back-up camera with sound.

A complete mobile office keeps you in touch and on the road. The See Ya! Gold on-board computer system is a complete package featuring everything pictured above.

The See Ya! Gold is engineered with an assortment of

## “DUAL SYSTEMS”

To keep you running and comfortable under any circumstances. We hope that nothing ever goes wrong with your coach but in case it does we've provided back ups to keep you going.

### Heating and cooling -

- Hydro-Hot™ diesel/electric radiant heating features continuous hot water heater, heated floor tiles in galley and lavy and high volume radiant heating systems throughout coach with three separate thermostat heat controls in cockpit, galley & lavy.
- Dash air and heater.
- 27,000 BTU basement A/C with heat pump.
- 25,000 LPG gas heater.
- One LPG gas / electric water heater.
- One Hydro-Hot™ continuous water heater.

### Entertainment -

- 2 Dish PVR's: one in living area and one in bedroom.
- Dual LNB in-motion roof satellite plus portable dish.
- 4 TV's: 27" living room overhead, 13" galley slave, 13" bedroom overhead and 20" flat screen patio TV.
- 3 DVD players: front overhead, computer, and bedroom.
- 2 CD players: in dash and computer.
- Preprogrammed universal remote operates electronics inside your coach and out. Eliminates all those confusing separate remotes.

### Food preparation -

- 2 Ovens—your Advantium™ oven microwaves, bakes and browns.
- Traditional oven with chrome sealed-burner electric-ignition range top.

### Food storage -

- 14 CF four-door refrigerator / freezer.
- Patio refrigerator/freezer.

Ooohh,  
Thank you  
Alfa.



### The Ultimate in Luxuries



### Hydro Hot™ diesel/electric heating features :

- Electric heating—AC powered heating element can provide heating and domestic hot water during low demand periods.
- Diesel heating—efficient design uses the motorhome on-board diesel fuel (no need for propane to supply heat).
- Low diesel fuel usage and low electrical DC power consumption.
- Continuous hot water on demand.
- Temperature controlled heated floor tiles in galley and lavy.
- Three separate heating zones with dedicated thermostats in cockpit, galley and bed/bath area.
- Cool weather engine pre-heat.

*We've got you covered in  
your See Ya Gold!*

**GOLD**



GOLD



# Incredible exterior features

## Paint vs. Fiberglass

ALFA is all about value – and value can best be defined as a great product at a great price. We do not cut back on the quality of our products just because something is less expensive. Nor do we add items (and increase cost) to our coaches just because they are flashy and trendy. We believe that our money and ultimately your money should be spent on more important things than \$10,000 paint jobs and \$3500 scratch repairs.

We also believe that your investment should not only look good when you drive it off the lot but should weather well for years to come. Gel-coated fiberglass is durable and long lasting. After all, no one ever paints a yacht.

We believe your time should be spent enjoying your lifestyle – not spending every spare minute maintaining your coach and a painted coach requires hours more maintenance than a fiberglass coach.

A great price, weatherability and time to play –  
**NOW THAT'S VALUE!**



Air station with 50' hose.



Power cord reel.



Electric storage tray rolls out with the flick of a button. Storage containers included.



Our awesome one-piece electric awning with windsensor covers your entire patio and entry plus fully automatic awning and slide out cover package for your entire coach.



Handy keyless entry.



Quality aluminum rims.



Deluxe patio party center with refrigerator / freezer, 20" flat screen TV (controlled with your preprogrammed universal remote), two french loungers, two folding tables and four additional lounge chairs.



# 2005 See Ya Gold Floorplans & Decors

## See Ya Gold Specs

### Livingroom/Dinette

**Weight\*\***  
Unloaded Vehicle Weight  
UVW 28,808 LBS.

Gross Vehicle Weight  
GVWR 34,600 LBS.

Gross Combined Weight  
GVCR 44,600 LBS.

Front Gross Axle Weight  
14,600 LBS.

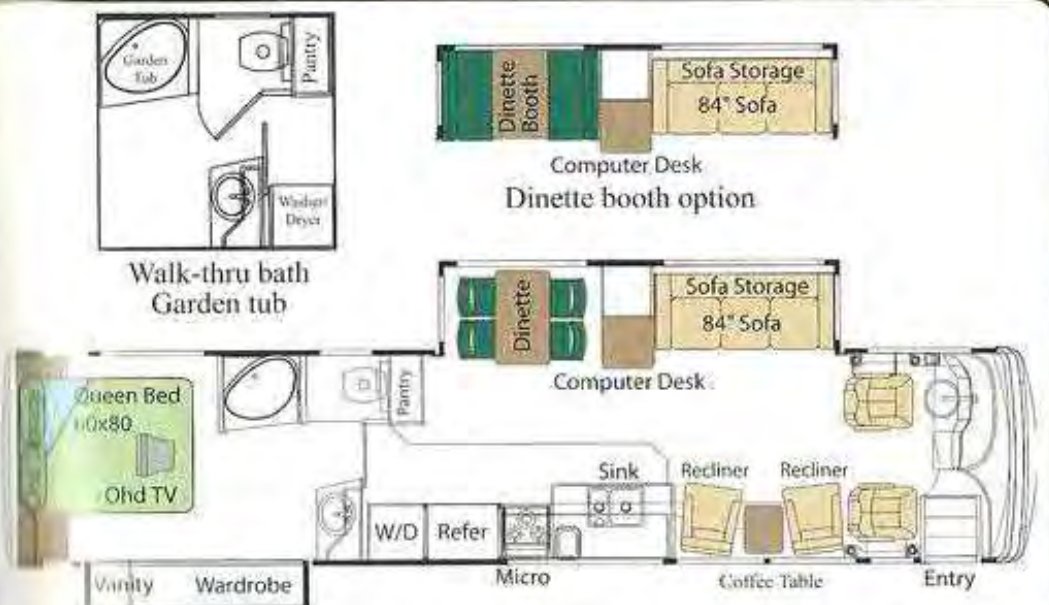
Rear Gross Axle Weight  
20,000 LBS.

### Measurements

Wheelbase 252"  
Overall Length 39'11"  
Overall Height 12'5"  
Interior Height 7'6"  
Interior Width 95"  
Exterior Width 102"

### Tank Capacities\*\*

Water Heater (GAL)10  
Gray Tank (GAL)75  
Black Tank (GAL)40  
Fresh Water Capacity  
(GAL)103  
Fuel Tank (GAL)150  
L.P. Tank (GAL)38\*\*\*



#1002 with walk-through bath and garden shower / Living Room Option #1



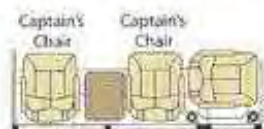
Private bath  
(garden tub)



Private bath  
Angle shower



Living Room Option #3



Living Room Option #5

### Bedroom Suite



\* Heights may vary due to vehicle loading  
\*\* All weights, measurements and capacities are approximate at time of printing  
\*\*\* Actual filled LP capacity is 80% of listing due to safety shut off required on tank

**GOLD**





# Freightliner XC Chassis



## Founder

### FRONT AXLE

Meritor Front Axle I-beam Wide Track  
Capacity: 10,500 Lbs

### REAR AXLE

Meritor Rear Axle  
Capacity: 19,000 Lbs

### BRAKES

Full Air Over Drum 15" X 4" Front  
& 16.5" X 7" Rear  
With Auto-Slack Adjusters And ABS

### CHASSIS

Freightliner XC Straight Rail Chassis  
G.V.W.R. - 29,500#

### ENGINE

Caterpillar C-7 300 Hp @2220 Rpm  
Turbocharged Aftercooled  
7.2l Diesel Engine

### ENGINE BRAKE

Turbo Exhaust Retarder From PAC

### FOOT PEDALS

Stationery Foot Pedals

### FUEL TANK

90 Gallon Fuel Tank

### SUSPENSION

Trailing Arm  
Newway Air Suspension

### TIRES

255/80R22.5 Size Tires - Load Range G

### WHEEL BASE

36' - 228"

### WHEEL CUT

50 Degree Wheelcut  
On Front Steering In Both Directions

### WHEELS

Steel With Polished Hub Caps

## See Ya!

### FRONT AXLE

Meritor Front Axle I-beam Wide Track  
Capacity: 12,000 Lbs

### REAR AXLE

Meritor Rear Axle  
Capacity: 20,000 Lbs

### BRAKES

Full Air Over Drum 15" X 4" Front  
& 16.5" X 7" Rear  
With Auto-Slack Adjusters And Abs

### CHASSIS

Freightliner XC Raised Rail Chassis  
G.V.W.R. - 32,000#

### ENGINE

Caterpillar C-7 350 Hp @2400 Rpm  
Turbocharged Aftercooled 7.2l

### ENGINE BRAKE

Turbo Exhaust Retarder From PAC

### FOOT PEDALS

Stationery Foot Pedals

### FUEL TANK

100 Gallon Fuel Tank

### SUSPENSION

Trailing Arm  
Newway Air Suspension

### TIRES

275/80R22.5 Size Tires - Load Range G

### WHEEL BASE

36' - 228" / 40' - 252"

### WHEEL CUT

50 Degree Wheelcut  
On Front Steering In Both Directions

### WHEELS

Steel With Polished Hub Caps

## See Ya! Gold

### FRONT AXLE

ZF Independent Wishbone  
Capacity: 14,320#

### REAR AXLE

Meritor Rear Axle  
Capacity: 20,000 Lbs

### BRAKES

Front-full Air Over 17"  
Disk \ Rear-full Air Over Drum  
With Auto Slack Adjusters And Abs

### CHASSIS

Freightliner XC Raised Rail Chassis  
G.V.W.R. - 34,320#

### ENGINE

Cummins ISL 400hp @ 1900 Rpm  
Turbo Charged Aftercooled  
8.9l Engine

### ENGINE BRAKE

C-brake From Jacobs

### FOOT PEDALS

Adjustable Foot Pedals

### FUEL TANK

150 Gallon Fuel Tank

### SUSPENSION

ZF Ifs Independent  
Air Ride Suspension

### TIRES

275/80R22.5 Size Tires - Load Range H

### WHEEL BASE

40' - 252"

### WHEEL CUT

56 Degree Wheel Cut On  
Front Steering In Both Directions

### WHEELS

Aluminum With Valve Extensions

## Common

AIR CONDITIONING COMPRESSOR  
R-134A AND CONDENSER

AIR CLEANER  
RESTRICTION INDICATOR

AIR COMPRESSOR W/  
HEATED AIR DRYER

ALLISON 3000 MH 6 SPEED  
AUTOMATIC TRANSMISSION W/  
PUSH BUTTON-SHIFT CONTROL

160 AMP ALTERNATOR

2 ALLIANCE 12V BATTERIES

DUAL AIR TANKS WITH  
AUTOMATIC MOISTURE EJECTORS

CRUISE CONTROL

DAYTIME RUNNING LIGHTS

FUEL/WATER SEPARATOR

HYDRAULIC FRONT &  
REAR LEVELING JACKS

MULTIPLE MODULE DATA  
COMPUTER INFORMATION  
CENTER WITH LCD DISPLAY

NEWAY AIR RIDE SUSPENSION  
WITH MANUAL DEFLATION VALVE  
AND SACHS SHOCK PACKAGE

REAR MOUNTED CROSS FLOW  
1050 SQ IN RADIATOR

TRAN-SYND TRANSMISSION FLUID

1000 WATT/115 VOLT BLOCK HEATER

# *A Great Home & a Great Drive*

As a direct result of the See Ya!'s Lock Box design, coupled with our 2 3/8" thick walls, and one piece composite roof the Alfa is the strongest coach on the road today. This strong box set atop the industry leading Freightliner chassis gives you the best drive and quietest ride in the Diesel market.



Alfa's unique Lock-Box (patent pending) frame/chassis design is created using the 5 steel bulkheads, a 3" steel framed vacuum bonded basement floor, and a 6 3/8" thick perimeter frame. This exclusive design reduces road noise, provides a vault-like basement, and a floor so strong it reduces twisting, flexing and bump steer.

Other manufacturers rely completely on the chassis rails to provide the rigidity and strength in their foundation. By only having an unsupported horizontal plane their coaches ride like boats as they twist and flex on the springs. The twisting and flexing coach lifts and pushes the axles, thus turning both the rear and front wheels, creating what is called "bump steer", making the coach harder to drive. ALFA's Lock-Box frame/chassis design solves this problem keeping the See Ya! rigid regardless of the road conditions.

# A Solid Foundation

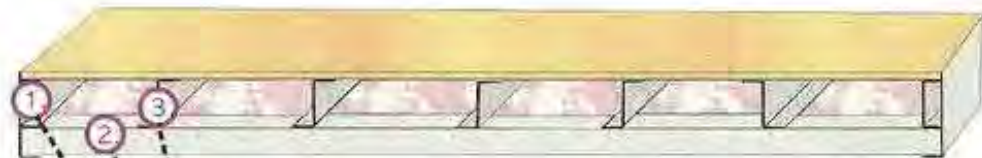


This foundation  
is GREAT!

## PERIMETER FRAME

1. The perimeter frame is made using 6-3/8" steel angle with C-channel welded inside.
2. 2" x 2" box tube is welded from side to side in the perimeter frame.
3. 3" Z-bar is welded running front to back on top of the box tube.

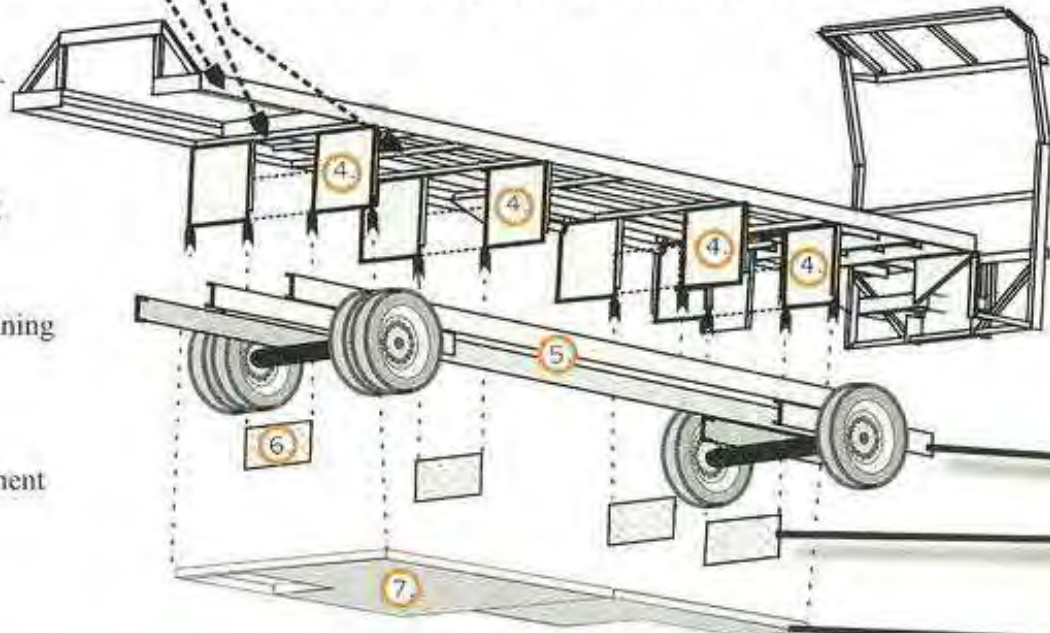
## FRONT CUT AWAY VIEW OF MAIN FLOOR



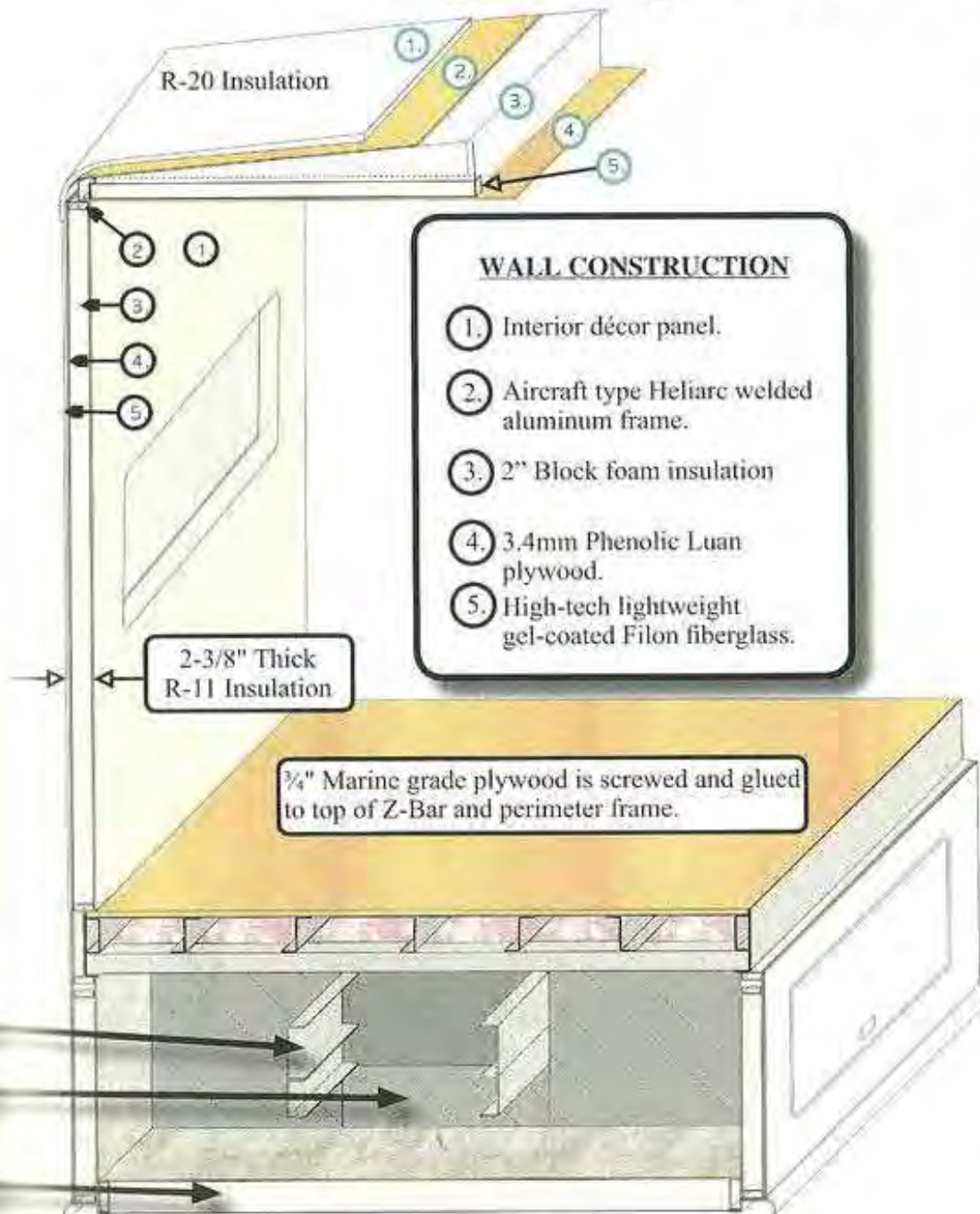
## LOCK BOX ASSEMBLY

4. Bulkheads are welded in pairs from front to back of frame.
5. The frame is lowered over chassis with bulkheads running along both sides.
6. A steel plate is welded between each pair of bulkheads joining them together surrounding the **FREIGHTLINER** chassis.
7. 3" Thick, steel framed, foam filled, vacuum bonded basement floor is then welded to bottom of bulkheads.

## THE UNION OF FRAME AND CHASSIS



# Quality Construction



## ROOF CONSTRUCTION

1. One piece rubber roof.
2. 3.4mm Luan plywood cap.
3. Ultra light, high density composite foam core.
4. Interior décor panel with carpet overlay.
5. Extruded aluminum welded superstructure.

## VACUUM BONDED

The walls and roof materials are placed on a vacuum table in layers.

Adhesive is sprayed between each layer.

High vacuum pressure is applied to structure as adhesive cures.

Walls and roof become a one piece composite with no seams or joints for weakness to develop.

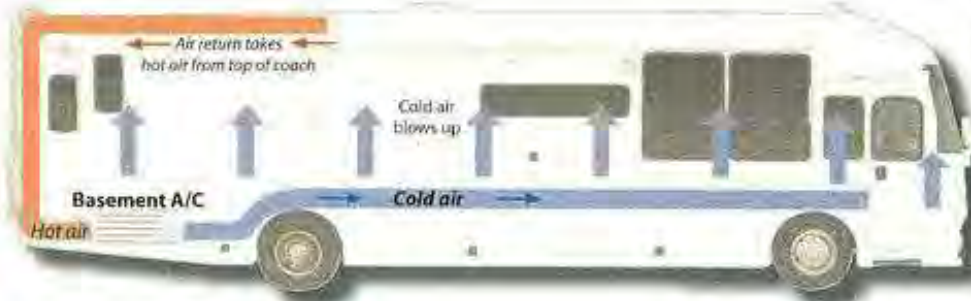
# The key to comfort is climate control

## Your comfort - our priority

Our incredible air conditioning system is just one of many features designed for your comfort.

### Here are more:

- 35,000-40,000 BTU furnace.
- Dual pane windows.
- Electric main awning with wind sensor.
- Slide out covers and/or window awning package.
- Electronic controlled dash heating & A/C system with defroster.
- 2 3/8" thick R-11 walls.
- Deluxe ceiling fan.
- Massive vault - like climate controlled basement storage.
- Fan-Tastic™ fan
- Exhaust fan in bathroom.
- Sun visors - electric and manual.



## Unitized Basement Air

An underfloor, integrated air conditioner system blows into one end of a 3" by 16" straight duct, fully protected from radiant heat and incredibly insulated.

*How Alfa's  
basement air  
conditioning system  
works*

Hot air is drawn into the upper air return duct, through the return line, and into the basement air conditioner. It is then converted into refrigerated air and blown into the main 3" x 17" in-floor duct line. From there it is distributed throughout the coach.

Now this  
makes sense



## Increased thermal efficiency

Testing indicates that basement air may operate up to 40% more efficiently than similar roof-mounted systems.



# The key to livability is Space!



12' 11"

12' 6"

*Some motorhomes are now claiming 7' interior ceiling heights- while that sounds good, it's important to know what you're really getting.*



- † Taller exterior heights-almost 13"! Alfa See Ya!'s exterior height is only 12'6" tall with a lower center of gravity making for a much better drive.
- † Top heavy. Alfa puts their air conditioning and heating units in the basement. Those other a/c units have a combined weight of 300 lbs all on a roof that's already 5" taller.
- † Ceiling fans and light fixtures bring the ceiling much lower. Alfa's 7'6" interior provides true clearance.
- † Small, minimal windows still leave you with a dark boxed-in feeling. Alfa has plenty of larger picture windows throughout the whole coach.

*Alfa*  
Gives You More!

## 32 Standard features (included in the purchase price of your coach!)

### CHASSIS

XC STRAIGHT RAIL FREIGHTLINER CHASSIS GVWR - 29,500 #	F
XC RAISED RAIL FREIGHTLINER CHASSIS GVWR - 32,000 #	S
XC RAISED RAIL FREIGHTLINER CHASSIS GVWR - 34,320 #	G
ALLISON 3000 MH 6 SPEED AUTOMATIC TRANSMISSION W/ PUSH BUTTON SHIFT CONTROL	F S G
C7 CATERPILLAR 300 HP TURBOCHARGED 7.2L DIESEL ENGINE	F
C7 CATERPILLAR 350 HP TURBOCHARGED 7.2L DIESEL ENGINE	S
CUMMINS ISL 400 HP TURBOCHARGED 8.9L DIESEL ENGINE	G
ENGINE BRAKE - C-BRAKE FROM JACOBS	G
ENGINE BRAKE - TURBO EXHAUST RETARDER	F S
MERITOR FRONT AXLE I-BEAM WIDE TRACK CAPACITY: 10,500 LBS	F
MERITOR FRONT AXLE I-BEAM WIDE TRACK CAPACITY: 12,000 LBS	S
ZF INDEPENDENT WISHBONE FRONT AXLE. CAPACITY: 14,320 LBS	G
MERITOR REAR AXLE CAPACITY 19,000 LBS	F
MERITOR REAR AXLE CAPACITY 20,000 LBS	S G
AIR CLEANER RESTRICTION INDICATOR	F S G
AIR COMPRESSOR W/ HEATED AIR DRYER	F S G
DUAL AIR TANKS WITH AUTOMATIC MOISTURE EJECTORS	F S G
FUEL/WATER SEPARATOR	F S G
HYDRAULIC FRONT & REAR LEVELING JACKS	F S G
NEWAY AIR RIDE SUSPENSION WITH MANUAL DEFLATION VALVE AND SACHS SHOCK PACKAGE	F S G
REAR MOUNTED CROSS FLOW RADIATOR	F S G
WATER TO OIL REMOTE MOUNTED TRANSMISSION AIR COOLER	F S G
10,000 LB HITCH RECEIVER W/ 7 WAY PLUG	F S G
FULL AIR OVER DRUM BRAKES FRONT & REAR WITH AUTOMATIC SLACK ADJUSTERS AND ABS	F S
FRONT-FULL AIR OVER 17" DISK / REAR-FULL AIR OVER DRUM WITH AUTO SLACK ADJUSTERS AND ABS	G
STATIONARY FOOT PEDALS	F S
ADJUSTABLE FOOT PEDALS	G
90 GALLON FUEL TANK	F
100 GALLON FUEL TANK	S
150 GALLON FUEL TANK	G
ZF IFS INDEPENDENT AIR RIDE FRONT SUSPENSION	G
255/ 80R22.5 SIZE TIRES - LOAD RANGE G	F
275/80R22.5 SIZE TIRES - LOAD RANGE G	S
275/80R22.5 SIZE TIRES - LOAD RANGE H	G
WHEEL BASE - 36' - 228"	F
WHEEL BASE - 36' - 228" / 40' - 252"	S

WHEEL BASE - 40' - 252"	G
50 DEGREE WHEELCUT ON FRONT STEERING IN BOTH DIRECTIONS	F S
56 DEGREE WHEELCUT ON FRONT STEERING IN BOTH DIRECTIONS	G
WHEELS - STEEL W/ POLISHED HUB CAPS	F S
WHEELS - ALUMINUM W/ VALVE EXTENSIONS	G

### ELECTRICAL SYSTEMS

2000 WATT INVERTER FREEDOM 458 W/ 100 AMP CHARGE	F
2000 WATT INVERTER XANTREX W/ 100 AMP CHARGE	S G
SEPARATE 400 WATT INVERTER FOR COMPUTER	G
160 AMP ALTERNATOR	F S G
50 AMP 120 V / 240 V POWER DISTRIBUTION PANEL	F S G
7.5 KW DIESEL GENERATOR	F S G
BATTERY DISCONNECT SWITCHES	F S G
EIGHT BATTERIES: 6 SIX VOLT, 2 TWELVE VOLT	F S G
INTERIOR LOCATED FUSES FOR EASY REPLACEMENT	F S G
SYSTEMS MONITOR PANEL	F S G
HARD WIRED POWER CORD 28 FT 50 AMP	F
POWER CORD WITH TWIST LOCK 36 FT 50 AMP	S
ELECTRIC POWER CORD REEL 36 FT 50 AMP	G
50 AMP SURGE PROTECTOR	S G

### DRIVER'S COCKPIT

12 V OUTLET	F S G
BACK UP CAMERA WITH MONITOR AND ONE WAY SPEAKER	F S G
DASH FANS	F S G
FOUR-POINT SEMI-AUTOMATIC HYDRAULIC LEVELING JACKS	F S G
PILOT AND COPILOT MAP LIGHTS	F S G
POWER CONTROLLED HEATED EXTERIOR MIRRORS	F S G
POWER STEERING / CRUISE CONTROL	F S G
REAR VIEW MIRROR FOR INTERIOR VIEWING	F S G
TILT AND TELESCOPIC STEERING WHEEL COLUMN	F S G
CB READY WITH ANTENNA	S G
LINOLEUM AT ENTRY	F
CERAMIC TILE AT ENTRY	S G
VINYL DRIVER/ PASSENGER SEATS	F
INTEGRATED LEATHER DRIVER/ PASSENGER SEATS	S
ULTRALEATHER™ DRIVER/ PASSENGER SEATS	G
SMARTWHEEL	S G
MANUAL PASSENGER SIDE STEP COVER	F S



## DRIVER'S COCKPIT (CONT)

ELECTRIC PASSENGER SIDE STEP COVER	G
SINGLE ELECTRIC FRONT WINDSHIELD SUN VISOR	F
DUAL ELECTRIC FRONT WINDSHIELD SUN VISORS	S G
MANUAL DRIVER & PASSENGER SIDE SUN VISORS	F S
ELECTRIC DRIVER & PASSENGER SIDE SUN VISORS	G

## AIR CONDITIONING, HEATING AND VENTS

27,000 BTU RESIDENTIAL STYLE BASEMENT AIR CONDITIONING SYSTEM W/ HEAT PUMP	F S G
DELUXE CEILING FAN	F S G
DUAL PANE WINDOWS	F S G
ELECTRONIC CONTROLLED DASH HEATING AND A/C SYSTEM WITH DE-ROSTER	F S G
IN-FLOOR DUCTED HEATING AND AIR DISTRIBUTION SYSTEM	F S G
POWERED VENT IN BATHROOM	F
FAN-TASTIC™ EXHAUST VENT IN BATHROOM	S G
FAN-TASTIC™ FAN IN LIVING ROOM	F
FAN-TASTIC™ FAN IN LIVING ROOM & BEDROOM	S G
35,000 BTU FURNACE	F
40,000 BTU FURNACE	S G
HYDRO-HOT™ HEATING SYSTEM W/ 3 HEATING ZONES AND HEATED TILE	G

## INTERIOR LUXURIES AND ENTERTAINMENT SYSTEMS

ENTERTAINMENT CENTER W/ COMBO VCR/ DVD PLAYER	F S G
FLEXIBLE READING LIGHTS OVER SOFA	F S G
IN DASH STEREO SYSTEM W/ CD PLAYER AND SIRIUS SATELLITE RADIO	F S G
SOFT TOUCH CARPETED CEILING	F S G
TV ANTENNA WITH BOOSTER	F S G
4 CHANNEL STEREO AMPLIFIER	S
4 CHANNEL STEREO AMPLIFIER & CELL PHONE/COMPUTER/REAR VIEW CAMERA	G
AM/FM/CD PLAYER AND CLOCK/ ALARM STEREO RECEIVER W/ TWO SPEAKERS IN BEDROOM	F
VOLUME CONTROL FOR TWO SPEAKERS FROM DASH STEREO IN BEDROOM	S G
RAISED PANEL OAK OVERHEAD CABINET DOORS IN GALLEY	F
RAISED PANEL OAK CABINET DOORS THROUGHOUT	S
ARCHED & STRAIGHT RAISED PANEL OAK CABINET DOORS AND FACE FRAMES THROUGHOUT	G
STORAGE CABINET BEHIND SOFA	F S G

6 DISC CD CHANGER	S G
FOUR LIVING ROOM AND TWO BASEMENT SPEAKERS W/ SINGLE VOLUME CONTROL	F
FOUR LIVING ROOM, TWO BEDROOM AND TWO BASEMENT SPEAKERS W/ 3 VOLUME CONTROLS	S G
OPTIONAL FABRIC J-LOUNGE	F
OPTIONAL INTEGRATED LEATHER J-LOUNGE	S
OPTIONAL ULTRALEATHER™ J-LOUNGE	G
EURO CHAIR LEATHER RECLINER W/ FOOTSTOOL	F
INTEGRATED LEATHER RECLINERS	S
ULTRALEATHER™ RECLINERS	G
PREPROGRAMMED UNIVERSAL REMOTE CONTROL	S G
PORTABLE SATELLITE DISH W/ DUAL LNB	S G
ROOF MOUNTED AUTOMATIC SATELLITE DISH W/ DUAL LNB	F
RECESSED AUTOMATIC ROOF MOUNTED SATELLITE DISH W/ DUAL LNB	S
RECESSED IN-MOTION TRACKING ROOF MOUNTED SATELLITE DISH W/ DUAL LNB	G
SATELLITE RECEIVER IN FRONT OVERHEAD - DIRECT TV	S
SATELLITE RECEIVERS/PVRs IN FRONT OVERHEAD AND BEDROOM	G
DISHNET	F
FABRIC SLEEPER SOFA	S
INTEGRATED LEATHER SLEEPER SOFA	G
ULTRALEATHER™ SLEEPER SOFA	F
27" OVERHEAD TV	S G
27" OVERHEAD FLAT SCREEN TV	F
13" OVERHEAD TV W/ HEADPHONE JACK IN BEDROOM	S G
13" OVERHEAD TV/DVD COMBO IN BEDROOM	F
13" GALLEY TV	S G
WIRED FOR PATIO TV	F
19" PATIO TV	S
20" FLAT SCREEN PATIO TV	G
WASHER/DRYER COMBO READY	F
WASHER/DRYER COMBO PACKAGE/ FILTERLESS AND OUTSIDE VENTED	S G

## GALLEY AMENITIES

21" OVEN W/ 3 BURNER RANGE AND SELF LIGHTING HIGH OUTPUT BURNERS	F S G
COUNTER-FLUSH-KNIFE RACK BEHIND STOVE	F S G
DELUXE SINGLE LEVER KITCHEN FAUCET W/ PULL OUT SPRAYER	F S G
DEMAND WATER SYSTEM W/ PUMP	F S G

## Even More Standard features

### GALLEY AMENITIES (CONT)

EXCLUSIVE INTERIOR/ EXTERIOR PASS THROUGH WASTE BASKET SYSTEM	F S G
OAK PAPER TOWEL HOLDER W/ TRAVEL LOCK	F S G
SOLID SURFACE COUNTERTOP W/ PORCELAIN SINK	F S
SOLID SURFACE COUNTERTOP W/ STAINLESS STEEL SINK	G
SPACE SAVER CONVECTION MICROWAVE	F S
DELUXE GE ADVANTUM OVEN	G
WATER FILTER WITH FAUCET	G
BROILER PAN	S G
OAK DINETTE TABLE	F
OAK DINETTE TABLE W/ LEAF	S G
LINOLEUM FLOORING	F
CERAMIC TILE IN GALLEY & BATH	S
HEATED CERAMIC TILE W/ DECORATIVE ACCENTS IN GALLEY & BATH	G
WHIRLPOOL™ 22 CF SIDE BY SIDE RESIDENTIAL REFRIGERATOR/ FREEZER W/ IN DOOR WATER & ICE DISPENSER	F
NORCOLD 12 CF FOUR DOOR REFRIGERATOR/FREEZER W/ ICE MAKER	S
DOMESTIC 14 CF SIDE-BY-SIDE REFRIGERATOR/ FREEZER W/ ICE MAKER	G
RAISED OAK REFRIGERATOR DOOR PANELS	S
BROOKHOLD STAINLESS STEEL REFRIGERATOR DOOR PANELS	G

### BATH AND BEDROOM AMENITIES

CEDAR IN BEDROOM WARDROBE	F S G
CONVENIENT OUTLET HIDE-AWAY BEHIND BEDSIDE PICTURE FRAME	F S G
FULL LENGTH DRESSING MIRROR	F S G
GLASS SHOWER DOOR W/ TOWEL BAR	F S
FITCHED GLASS SHOWER DOOR W/ THREE TOWEL BARS	G
EUROPEAN STYLE BODY CARE DISPENSER	G
GOOSE NECK READING LIGHTS ABOVE BED	G
HIGHT ADJUSTABLE RESIDENTIAL STYLE MASSAGE SHOWER HEAD	F S G
HIGH DOME DUAL PANE SKYLIGHT W/ SHADE IN SHOWER	F S G
LARGE MEDICINE CABINET W/ MIRROR	F S G
LIGHT IN SHOWER	F S G
SEAMLESS ONE PIECE SINK AND COUNTERTOP	F S
SOLID SURFACE COUNTERTOP W/ STAINLESS STEEL SINK	G
SOFT TOP DELUXE INNER SPRING MATTRESS	F S G
ABS SHOWER	F
ONE PIECE FIBERGLASS SHOWER/ TUB	S G
FIBERGLASS TOILET	F
CHINA TOILET	S G

### PLUMBING AND LP SYSTEMS

10 GALLON LP GAS/ ELECTRIC WATER HEATER	F S G
GRAVITY AND PRESSURIZED WATER FILL	F S G
NO-FUSS FLUSH BLACK HOLDING TANK RINSING SYSTEM	F S G
25 GALLON LP TANK	F
38 GALLON LP TANK	S G
MANUAL DUMP VALVES	F
ELECTRIC DUMP VALVES	S G

### EXTERIOR AMENITIES

ELECTRIC ENTRY STEP	F S G
EXTERIOR SECURITY LIGHTS	F S G
EXTERIOR SHOWER	F S G
GEL COAT MARINE GRADE UV PROTECTED FRONT CAP	F S G
PORCH LIGHT	F S G
REAR LADDER	F S G
SLIDE OUT COVERS	F S G
TWO EXTERIOR ASSIST HANDLES	F S G
UNDER HOOD UTILITY LIGHTS FRONT & REAR	F S G
ELECTRIC MAIN AWNING & MANUAL ENTRY AWNING	F
ELECTRIC MAIN AWNING W/ REMOTE CONTROL AND WIND SENSOR & MANUAL ENTRY AWNING	S
SINGLE ELECTRIC MAIN AND ENTRY AWNING W/ REMOTE CONTROL AND WINDSENSOR	G
SLIDE OUT COVERS AND WINDOW AWNING PACKAGE	S
ELECTRIC SLIDE OUT WINDOW AND BEDROOM WINDOW AWNINGS	G
LARGE PATIO STORAGE W/ TV HOOK UP, 12 V RECEPTACLE	F
AC/DC REFRIGERATOR/FREEZER, 4 FOLDING CHAIRS, 2 FOLDING TABLES & 8 STORAGE BINS	S
AC/DC/ REFRIGERATOR/FREEZER, 4 FOLDING CHAIRS, 2 FOLDING TABLES, 2 DELUXE FOLDING RECLINERS & 8 STORAGE BINS	G
19" PATIO TV	S
20" FLAT SCREEN PATIO TV	G
EZ-STOR™ SLIDE OUT TRUNK TRAY	S
ELECTRIC EZ-STOR™ SLIDE OUT TRUNK TRAY	G
PERIMETER SENSORS, CHROME REAR VIEW MIRRORS, CELL PHONE ANTENNA, GPS ANTENNA AND KEYLESS ENTRY	G

I. WHAT IS CO  
All Leisure, C  
operated or us  
For all of our t  
material and a  
For our motor  
be free from a  
Section IV.

This warranty  
and equipment  
limited to, (in t  
motorhomes)  
these valid th  
of proof of yo  
manufacturer  
improvement  
of this limited  
parts, at All's

II. WARRANTY  
The warranty  
extends for a  
Written notice  
must be made  
during the wa

III. LIMITATIO  
THIS LIMITED  
INCLUDING  
WARRANTY F  
LIMITED WAR  
OR THE EXCI  
AND EXCLUS  
ALSO HAVE C

IV. WHAT IS  
This warranty  
A. Battery  
replaces  
B. Any def  
 theft, ex  
C. " All  
and sin  
of purc  
between  
the Wa  
of geth  
control  
D. Any def  
motorh  
the inst  
any mo  
E. Any def  
further  
breakd  
F. Any de  
environ  
windst  
insect

## A SUMMARY OF ALFA LEISURE, INC.'S LIMITED WARRANTY\*\*

### I. WHAT IS COVERED

Alfa Leisure, Inc.'s ("Alfa") limited warranty covers trailers and motorhomes registered in the United States and normally operated or used in the United States or Canada, and is provided to the original retail purchaser of the trailer or motorhome. For all of our trailers and motorhomes, Alfa warrants that all parts of our manufacture are free from substantial defects in material and workmanship under normal use, except those items listed below under Section IV, "What Is Not Covered." For our motorhomes, Alfa warrants the structure of the interior and exterior sidewalls, slide outs, floor, roof, and frame to be free from substantial defects in material and workmanship under normal use, except those items listed below under Section IV, "What Is Not Covered."

This warranty is not intended to replace, nor does it replace, any of the valid warranties separately given on appliances and equipment manufactured by third parties and installed by Alfa on your new Alfa trailer or motorhome, including but not limited to, (in the case of motorhomes) the chassis, drive-train, engine, transmission, and (in the case of both trailers and motorhomes) all other separately warranted appliances, parts or components. However, Alfa will assist you in enforcing these valid third party warranties (except for tires and batteries) throughout the term of this warranty, upon presentation of proof of your compliance with the warranty procedures required by the appropriate third party appliance or equipment manufacturer. This is a limited warranty, as described in the Magnuson-Moss Warranty Federal Trade Commission Improvement Act (15 U.S.C. 2301, et seq.). In the event that of a covered defect, Alfa will repair the defect under the terms of this limited warranty. Needed repairs covered under this warranty may be performed using new or remanufactured parts, at Alfa's election.

### II. WARRANTY PERIOD

The warranty period begins on the date the trailer or motorhome is first delivered to you, the original retail purchaser, and extends for a period of one (1) year from such date, or in the case of a motorhome for 18,000 miles, whichever occurs first. Written notice of any covered defect must be given to Alfa no later than the last day of the warranty period, and repairs must be made or initiated no later than forty five (45) days after the warranty period ends. Any defect that is not reported during the warranty period is not covered.

### III. LIMITATIONS AND EXCLUSIONS

THIS LIMITED WARRANTY IS NOT TRANSFERABLE UNLESS REQUIRED BY LAW. ANY IMPLIED WARRANTIES, INCLUDING IMPLIED WARRANTIES OF MERCHANTABILITY AND FITNESS, ARE LIMITED IN DURATION TO THE WARRANTY PERIOD. INCIDENTAL AND CONSEQUENTIAL DAMAGES ARE EXCLUDED FROM COVERAGE UNDER THIS LIMITED WARRANTY. SOME STATES DO NOT ALLOW LIMITATIONS ON HOW LONG AN IMPLIED WARRANTY WILL LAST OR THE EXCLUSION OR LIMITATION OF INCIDENTAL OR CONSEQUENTIAL DAMAGES, SO THE ABOVE LIMITATIONS AND EXCLUSIONS MAY NOT APPLY TO YOU. THIS WARRANTY GIVES YOU SPECIFIC LEGAL RIGHTS, AND YOU MAY ALSO HAVE OTHER RIGHTS WHICH VARY FROM STATE TO STATE.

### IV. WHAT IS NOT COVERED

This warranty does not cover the following:

- Batteries, hubcaps, light bulbs, shock absorbers, tires, upholstery, wheels, and wheel trim, unless being repaired or replaced due to damage resulting from a covered defect.
- Any defect, damage or malfunction caused by or resulting from abuse, misuse, negligence, accident, collision, fire, theft, vandalism, riot, explosion, an act of war or terrorism, or objects striking the trailer or motorhome.
- All information contained in this brochure and all related materials are subject to the terms and conditions outlined in the written warranty agreement signed by the customer at the time of purchase (the "Warranty Agreement"). In the event there are conflicts or inconsistencies between the terms and conditions set forth in this brochure and the Warranty Agreement, the Warranty Agreement shall govern in all cases. This is not an agreement, but an outline of general coverage. Please read the manufacturer's warranty and the extended service contract agreement available at your ALFA dealer for exact coverage terms and conditions.
- Any defect, damage or malfunction caused by post-manufacture alteration or modification made to your trailer's or motorhome's original equipment as manufactured, installed and/or assembled by Alfa, including but not limited to the installation of any custom or add-on part, alarm or alarm system, oversized or undersized tires, trailer hitch, or any modification or alteration of the trailer or motorhome's frame or suspension components.
- Any defect, damage or malfunction caused by your failure to exercise reasonable care to protect against and avoid further damage to your trailer or motorhome after you knew or should have known of the existence of a defect, breakdown or component failure.
- Any defect, damage or surface corrosion, subsequent to manufacture, solely caused by or resulting from the environment, such as moisture, acid rain, lightning, airborne fallout, earthquakes, freezing, rust, oxidation, windstorms, salt, sand, wind, chemicals in the surrounding air, pollution, salt water, hail, flood, rodent, animal or insect infestation, mold, mildew or any other external environmental condition.

- Any defect or damage caused by or related to condensation in the interior of the trailer or motorhome, except for condensation occurring in the interior of double-paned windows, between the panes.
- Any defect or damage caused by or related to normal wear, usage and deterioration, such as fading or discoloration of soft goods (upholstery, drapes, carpet, vinyl), screens, cushions, mattresses), fading or discoloration of exterior plastic or fiberglass components, tears, punctures and soiling.
- Any defect that is not reported during the warranty period.
- Any repair performed without prior authorization from the selling dealer or Alfa.
- Squeaks, creaks, pops, wind noise and other such subjective noises, which are normal for trailers and motorhomes and are not related to or caused by any covered defect.
- Any minor cosmetic flaw, damage or imperfection which is normal in the manufacture, shipping and display of trailers or motorhomes and does not substantially affect the suitability of the trailer or motorhome for its intended purpose of recreational use.
- The cost of any normal trailer and motorhome maintenance service or parts, including but not limited to, alignment, suspension, wheel balancing, filters, fluids, lubricants, engine coolant, brake pads, brake rotors, brake drums, brake linings and shoes, engine tune up, and spark/glow plugs. However, such cost will be included if incurred as a result of a breakdown caused by a defect or malfunction covered by this warranty.
- The cost of any labor or replacement parts which are not reasonably necessary to correct or repair a covered defect, but which a service or repair facility may recommend or require as part of the overall repair.
- Economic loss or extra expense, including, but not limited to physical damage, property damage, transportation to and from dealer or manufacturer locations, loss of trailer or motorhome use, storage, loss of time, profits, wages or pay, inconvenience, vehicle rental expense, lodging, meal or other travel costs, state or local taxes required on warranty repairs, commercial loss or any other loss that results from any trailer or motorhome defect, malfunction or breakdown which is not otherwise covered under this warranty.
- Costs incurred for transportation of the trailer or motorhome to a dealer, costs incurred as the result of the consumer's request to have repairs performed at a location other than an authorized dealership, or costs incurred for services calls, mileage charges or other similar fees associated with the use of a mobile service provider, unless deemed necessary by Alfa and approved by Alfa in advance of such costs being incurred.
- Any breakdown that occurs and/or repairs made outside of the United States of America and Canada.
- Any trailer or motorhome used as a commercial unit, a rental unit, taxi, limousine or shuttle, or for commercial delivery, towing or road repair operations, construction job site activities, hauling freight, police or emergency service, principally off road use, racing, competitive driving, snow removal, road work, service or repair.
- Any Alfa trailer or motorhome currently or previously titled as salvaged, scrapped, junked, dismantled or totaled.
- For any Alfa motorhome, the chassis and any mechanical parts, including the engine, drive train, steering system, brake system, wheels, tires, lug nuts, muffler and any other parts manufactured or assembled by the chassis manufacturer.
- Any undertaking, representation or warranty made by any dealer or other third party, which is not contained within this limited warranty. Alfa does not authorize any person to create for it any obligation, warranty or liability in connection with Alfa trailers or motorhomes.

### V. HOW TO OBTAIN WARRANTY SERVICE

For this limited warranty to apply, you must, within the warranty period, provide Alfa with notice of the defect(s), a reasonable opportunity to inspect the trailer or motorhome, reasonable attempt(s) to repair the trailer or motorhome, and a reasonable period of time to complete repairs. You must also follow the procedures set forth in the warranty document, which include (a) avoiding further damage to your trailer or motorhome, (b) taking the trailer or motorhome to an authorized Alfa dealer or service center near you, (c) notifying Alfa of a covered defect within a reasonable time after discovering it, (d) obtaining Alfa's authorization and approval for any repair before starting any repair work, (e) permitting a reasonable inspection of your trailer or motorhome before repairs are made, (f) allowing a reasonable time to perform necessary repairs and (g) sending approved claims to Alfa for reimbursement.

\*\* All information contained in this brochure and all related materials are subject to the terms and conditions outlined in the written warranty agreement signed by the customer at the time of purchase (the "Warranty Agreement"). In the event there are conflicts or inconsistencies between the terms and conditions set forth in this brochure and the Warranty Agreement, the Warranty Agreement shall govern in all cases. This is not an agreement, but an outline of general coverage. Please read the manufacturer's warranty and the extended service contract agreement available at your ALFA dealer for exact coverage terms and conditions.

*See Ya!*



*Join the family - the family of Alfa owners!*

*Join the fun, cherish the memories. Your first year's membership in the Alfa Owner's Club is included with the purchase of your Alfa. Travel to exciting destinations with quality minded people like yourself. Numerous activities are hosted by local chapters, leading up to the annual national rally. For more information, log on to: [www.alfaleisure.com](http://www.alfaleisure.com)*

All specifications and features apply to product manufactured at time of publication. Alfa reserves the right to make changes, improvements and other modifications throughout the model year. Colors may vary from printed materials. Subject to change without notice.  
(c) 2005 Alfa Leisure, Inc. All Rights Reserved.

*alfa*  
*Gives You More!*

[www.alfaleisure.com](http://www.alfaleisure.com)

Alfa Leisure, Inc. • 1612 S. Cucamonga • Ontario, California 91761 • (909) 628-5574