

05 Horizon®

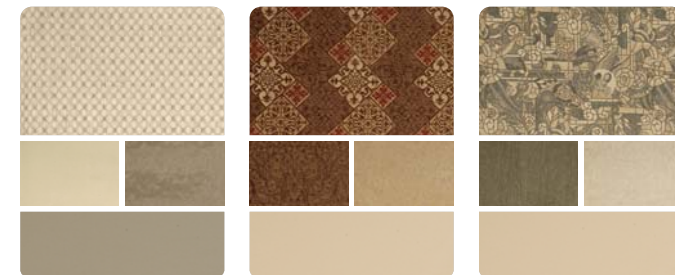




40KD Glass Block with Honey Cherry

## 05 Horizon | Join the Evolution.

We're proud to boast the Horizon as our flagship Itasca coach. It all started with the creation of the Evolution™ Chassis. Built in a close partnership with Freightliner®, it combines a powerful diesel engine with versatile, one-piece, formed-rail construction for a chassis that is strong, smooth and loaded with storage space. The Horizon comes in five distinct floorplans, including two with quad slideouts, and is loaded with high-end amenities like stainless steel appliances. Factor in our SmartSpace™ philosophy that incorporates functional and user-friendly features to make the most of the available space and you'll quickly fall in love with the Itasca Horizon.



Briarwood

Toasted Almond

Glass Block

Most Horizon models have two living room slideouts, allowing space for a legless dining table and our most comfortable Stitchcraft furniture. The plush couches and chairs can be upholstered in soft UltraLeather HP™ for a more upscale look and feel. A sophisticated Euro Chair by Flexsteel® is a standard item on the 36RD and available in several other models. The interior cabinetry has solid wood doors and drawers with a highly durable, catalyzed protective finish that will look great for years to come. To keep you comfortable, dual-glazed windows, floor-ducted heating and TrueAir® residential central air conditioning all work together for superior climate control. A heat pump is also provided to help keep the coach warm without using the furnace.



40KD Toasted Almond with Washed Maple

The Horizon is stacked with the latest in digital entertainment. A 24" Sony® flat-screen TV, DVD/VCR combo, amplified antenna and video selection system all come standard. A 27" Sony flat-screen TV comes standard in the 40AD and 40FD with a stand-alone hardwood entertainment center. Five recessed speakers and two subwoofers deliver theater-quality sound from the QSurrround™ amplified sound system. Passengers can watch TV on the road when you select the digital in-motion satellite dish. A 2,000 watt inverter/charger is included to power your appliances when a shoreline or generator power source is not available.



Discriminating motor coach enthusiasts appreciate elegant touches like the ceramic tile floorcovering, textured glass shower door, skylight and Corian® solid-surface countertops in the Horizon bathroom. The flexible showerhead includes a shutoff valve to conserve water and a Moen Posi-Temp® valve which regulates a consistent water temperature as you shower, even when water pressure fluctuates. The 10-gallon water heater can operate on 110-volt AC or LP gas.



The bedroom in the 40KD is so roomy, you can choose the available king-size Sleep Number® bed. With a rear slideout on every model, there's plenty of room for a full wardrobe and a 20" flat-screen TV. There's even a Sharp® LCD screen on the 36RD. The front DVD and VCR components are wired to the bedroom TV and a sensor in the TV cabinet lets you control them with the bedroom remote. An Audiovox® rear stereo system is also included for your listening pleasure.



Sleep better in a Sleep Number® bed by Select Comfort™. A hand-held remote on each side of the bed lets you quickly and independently adjust the mattress firmness to your ideal level of comfort and support...your Sleep Number, which is The Key to a Perfect Night's Sleep!™



Portsmouth Oak

Concert Cherry

Honey Cherry

Washed Maple



40KD Glass Block with Honey Cherry



The available combination washer/dryer features multiple wash, time and temperature cycles to accommodate most fabrics.

A galley with solid-surface countertops provides plentiful workspace for even the most extravagant meals. You can cook almost anything in the high-end stainless steel appliances like the 30" microwave/convection oven or available G.E. Advantium™ Speedcook oven. The standard refrigerator/freezer comes with a convenient slideout pantry. Upgrade to the four-door refrigerator/freezer with icemaker for even more cold storage. Cleanups are easy in the large stainless steel sink with Moen® faucet/pullout sprayer. Save even more time by adding an available dishwasher (NA 36GD). A separate faucet provides clear, delicious Everpure® filtered water.



The expandable dining table seats up to four people and features a legless design to give diners more space.



The 40AD comes with a unique buffet built into the dining table for extra storage. For more versatility, choose the multi-function table, which seats up to four and doubles as a computer desk (not shown).



The Rest Easy® multi-position lounge provides unmatched seating flexibility and comfort. At the press of a button it transforms from a couch into a relaxing recliner with a pullout ottoman. Press the button again to make a comfortable bed. You can upgrade your Rest Easy with UltraLeather HP™ for an upscale look.



Residential innerspring cushions make the available BenchMark™ full comfort dinette our most popular dinette ever. The seats flip up for easy access to the large storage space and quickly convert into a comfortable bed. A child safety seat anchor is also included.



Select the available Euro Chair with accompanying ottoman (standard on 36RD) and it will quickly become your favorite place to read or watch a movie (NA 40KD).



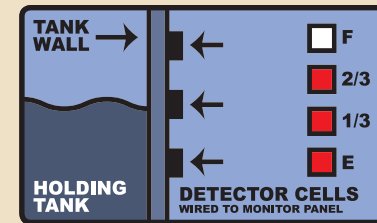
Escape from the summer heat and into the precision climate control of TrueAir® residential central air conditioning. Powered by

a Coleman-Mach® central cooling unit, TrueAir offers superior environmental control throughout the coach. The cooling unit is located in the basement to provide a lower vehicle profile, reduce noise and eliminate roof runoff from A/C condensation. This location is also much easier to service and provides a lower center of gravity than roof pod units. The standard insulated power roof vents and a heat pump help warm your coach on cool mornings, without using the LP furnace.



Keep your electrical systems running smoothly even when operating your central air conditioning on 30-amp. shoreline power. The PowerLine® energy management system monitors

onboard 110-volt electrical usage to automatically minimize the nuisance of tripped campground circuits by controlling the operation of postponable electrical loads during periods of heavy usage. As demand is lowered, PowerLine automatically returns power to secondary appliances and systems.



Winnebago Industries' exclusive TrueLevel™ holding tank monitoring system incorporates Mirus™ detector cell technology to ensure accurate fresh

and waste water tank level readings. Mirus detector cells produce a micro-electrical field that detects liquid levels from outside the tank. No more probes to corrode or clog. Just true, accurate readings time after time.



## ONE PLACE™

The OnePlace™ systems center brings important and frequently used switches into one central location so you can quickly check and operate multiple systems.



**You're in command behind the wheel of a Horizon.** Controls are placed for your convenience, such as the touchpad transmission built into the trim panel. The steering wheel has both tilt and telescoping adjustments to fit your driving preference and the dual-glazed cab windows slide open for your comfort. Dash instruments include an electronic compass with outdoor thermometer and a rearview monitor with one-way audio for worry-free backing. Other thoughtful features include map lights and bus-style power sunvisors.



**Stay informed and entertained.** Winnebago Industries® engineers worked closely with the radio manufacturer to create a radio specifically for motor home applications with large buttons and knobs that are easy to use. The RV Radio® includes an AM/FM stereo, CD player, cassette deck and a weather band. A steering wheel remote lets you change channels or tracks easily and you can enjoy the RV Radio when parked with a separate hand-held remote. Power your RV Radio from your coach batteries when parked thanks to the radio power switch.



**SIRIUS** Upgrade your listening choices with a Kenwood Sirius® Satellite receiver. High-altitude satellites deliver 100 channels of crystal-clear digital programming anywhere in the U.S. with no signal fades. (Sirius Satellite Radio programming is complimentary with your first year of ownership).



**Collect, analyze and save vehicle data with the available TripTek™ computer.** Information displayed in your color rearview monitor includes: distance to destination, time to destination, distance traveled, time elapsed, fuel economy and a handy pre-trip checklist.



**One key opens most everything thanks to the innovative KeyOne System.** The Horizon also includes a touch pad entry and a keyless remote for the entrance door and storage compartments. The remote even activates the patio light and map lights so you won't have to fumble through a dark coach to find a light switch.



**RVers are falling in love with two-way radios and now they're available with every Horizon.** The set of four radios recharges from the house batteries using the built-in charging station. Nickel metal hydride batteries provide up to 15 hours of standby time and 90 minutes of talk time on a single charge.



**Anti-lock air brakes are standard on every Horizon.** The accelerator and brake pedals adjust to accommodate most drivers.



**Comfortable travel starts with a comfortable chair.** Covered in soft UltraLeather HP™ and mounted on powered, six-way pedestals, the high-back cab seats are perfect for a long day on the road. Both chairs swivel and recline, while the passenger seat has a footrest for extra comfort. At the touch of a button, a stepwell cover slides in front of the passenger seat to create a flat floor.

**SMART STORAGE™** When you see Smart Storage,™ you know you've found a more convenient and functional way to store your gear.



The front driver-side slideout of every Horizon features Winnebago Industries' innovative StoreMore® slideout system. StoreMore compartments are nicely lit and large enough to accommodate bulky or odd-shaped items. Best of all, they extend with the slideroom for easy access. StoreMore can also be found on the front passenger-side slideout of the 36RD and 40FD.



Storing your gear is even easier with pullout trays. Select the new exterior entertainment center with a 24" flat-screen TV (left) w/DVD (20" on 36RD & 40FD) or choose the exterior entertainment center featuring a large storage slide-out box (above) with an upper shelf and a fold-down door – another example of Smart Storage.



**SMART STORAGE™**

Smart Storage makes better use of storage space. The available folding ladder (NA 36RD) comes in handy for washing windows and caring for your coach. It collapses completely to fit perfectly into the pullout holder when not in use. Straps and attachment points keep the auxiliary air hose, tire and awning tools neatly tucked away.



A convenient service center places plumbing and electrical connections in one location, including the QuickConnect™ coupling valve for fast, clean hookups. For added convenience, QuickConnect has its own holder when not in use. We also eliminated the frustration of wrestling cords and hoses through a tiny access hole with the innovative QuickPort™ service connection hatch. You can even rinse off at the exterior wash station. Powered reels for the hose and power cord are also available.

# EVOLUTION™ CHASSIS

**Experience the Evolution.** Winnebago Industries engineers worked closely with Freightliner to create the Evolution™ Chassis exclusively for this motor home application. Evolution represents the next generation of diesel pusher technology with one-piece formed steel chassis rails that are 25% thicker than traditional raised rails for added strength and performance. Formed rails also provide increased midsection storage, better weight distribution and improved floorplan flexibility.



## **The ultimate performance.**

Evolution Chassis delivers an unsurpassed driving experience with a powerful 350-hp Caterpillar® diesel engine or a 400-hp Cummins® diesel engine on larger models. Every Horizon comes equipped with independent front suspension and an impressive 56° wheel cut for a smooth, luxurious performance.

## **Other Evolution features:**

- 10,000-lb. hitch
- Engine exhaust brake
- Engine compression brake with 400-hp
- NeWay® rear air suspension
- Allison® 3000 MH 6-speed transmission
- Dual fuel fills

## EXTERIOR DESIGN

**Drive in style.** Choose from three full-body paint schemes to give your Itasca Horizon a style all its own.



Bluestone



Harvest

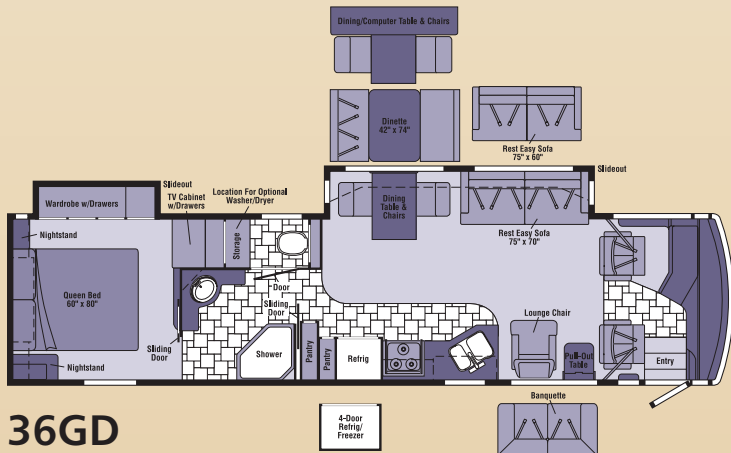


Deep Mahogany





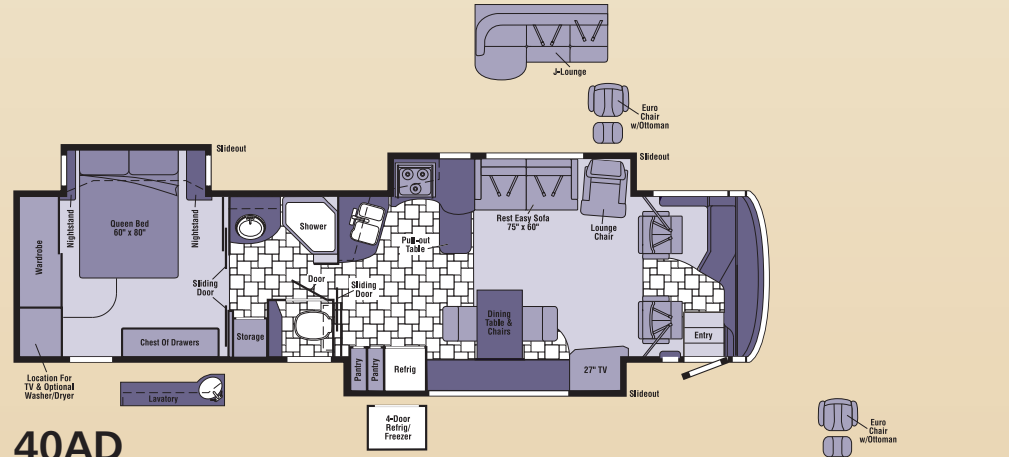
# 05 Horizon | FLOORPLANS



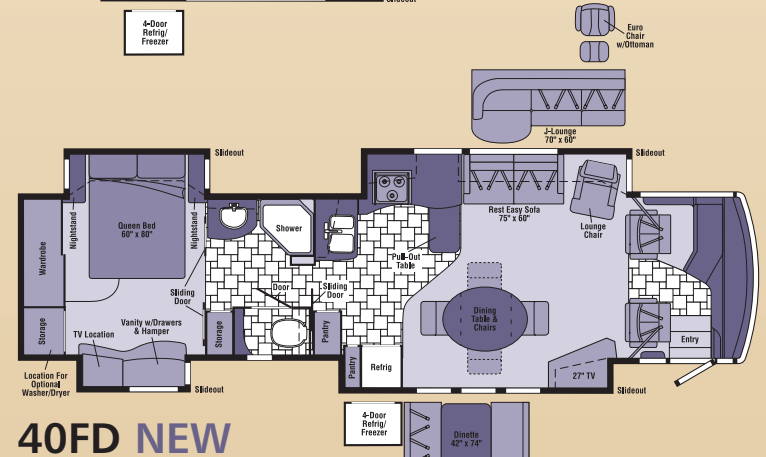
36GD



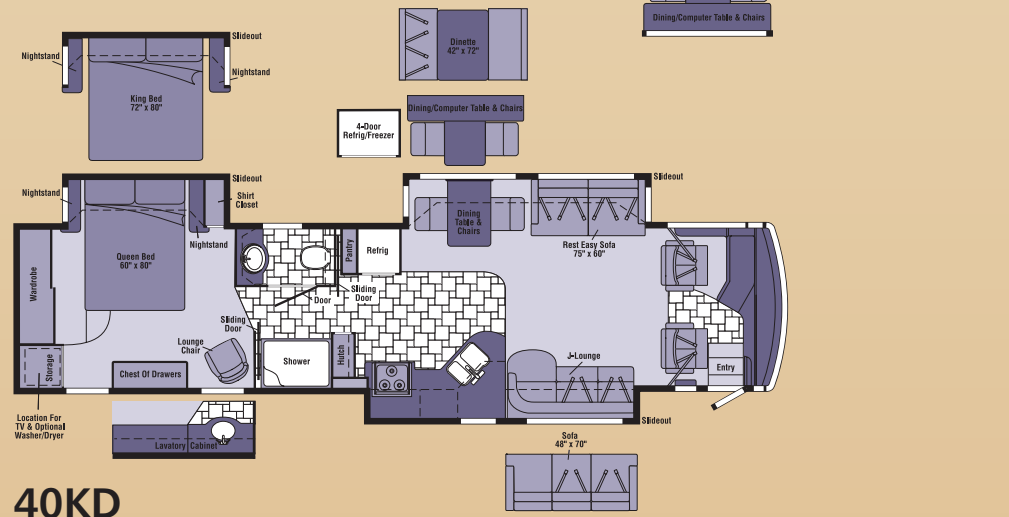
36RD NEW



40AD



40FD NEW



40KD



Ceramic Tile Floorcovering






Seat Belts

Note: Dimensions shown are for sleeping space only and may vary due to styling differences. Dashed lines denote overhead storage areas.

# 05 Horizon | SPECIFICATIONS

Weights & Measures	36RD NEW	36GD	40FD NEW	40KD	40AD
Length	36'7"	36'7"	39'10"	39'10"	39'10"
Exterior Height <sup>1</sup>	11'8"	11'8"	11'9"	11'10"	11'9"
Exterior Width <sup>2</sup>	8'5.5"	8'5.5"	8'5.5"	8'5.5"	8'5.5"
Exterior Storage <sup>3</sup> (cu. ft.)	127	140.7	136.4	179.8	181.2
Interior Height	6'8"	6'8"	6'8"	6'8"	6'8"
Interior Width	8'0.5"	8'0.5"	8'0.5"	8'0.5"	8'0.5"
Fresh Water Capacity w/Heater <sup>9</sup> (gal.)	109	89	109	89	89
Holding Tank Capacity <sup>9</sup> – Black / Gray (gal.)	55 / 54	54 / 55	62 / 55	54 / 55	62 / 55
LP Capacity <sup>4</sup> (gal.)	31	31	31	31	31
Fuel Capacity (gal.)	100	100	100	100	100
GCWR <sup>6</sup> (lbs.)	39,410	37,910	42,000	42,000	42,000
GVWR (lbs.)	29,410	27,910	32,000	32,000	32,000
GAWR – Front (lbs.)	10,410	10,410	12,000	12,000	12,000
GAWR – Rear (lbs.)	19,000	17,500	20,000	20,000	20,000
Wheelbase	228"	228"	267"	267"	267"

36RD	36GD	40FD	40KD	40AD	Automotive
S	S				<b>Chassis</b> –  Freightliner,® Caterpillar® 7.2L turbo-charged diesel, 350-hp, rear radiator, Allison® 6-speed electronic 3000 MH transmission, ZF-IFS front air suspension, NeWay® rear air suspension, 160-amp. alternator, four-wheel ABS, exhaust brake
		S	S	S	<b>Chassis</b> –  Freightliner,® Caterpillar® 7.2L turbo-charged diesel, 350-hp, side radiator, Allison® 6-speed electronic 3000 MH transmission, ZF-IFS front air suspension, NeWay® rear air suspension, 160-amp. alternator, four-wheel ABS, exhaust brake
		0	0	0	<b>Chassis</b> –  Freightliner,® Cummins® ISL 8.9L turbo-charged diesel, 400-hp, side radiator, Allison® 6-speed electronic 3000 MH transmission, ZF-IFS front air suspension, NeWay® rear air suspension, 160-amp. alternator, four-wheel ABS, engine compression brake
S	S	S	S	S	<b>Air Accessory Manifold</b> quick connect, 50' air hose, pressure gauge, manual air shut off, <b>Leveling Jacks</b> HWH® hydraulic, manual control, <b>Tire Tools</b> wrench & leverage bar, <b>Trailer Hitch</b> ® 10,000-lbs. draw bar/500-lbs. maximum vertical tongue weight & wiring, 7-pin connector, <b>Wheels</b> stylized aluminum
0	0	0	0	0	<b>Leveling Jacks</b> HWH® hydraulic, automatic controls
36RD	36GD	40FD	40KD	40AD	Cab Area & Driver Conveniences
S	S	S	S	S	<b>Cab Seats (UltraLeather HP™)</b> w/3-point adjustable seat belts, armrests, footrest (passenger), lumbar support, multi-adjustable slide/recline & swivel w/remote control, 6-way power assist, <b>Compass</b> electronic w/outdoor thermometer, <b>Console Center Cabinet</b> , <b>Cruise Control</b> , <b>Defroster Fans (2)</b> auxiliary 2-speed w/instrument panel switch, <b>Exhaust Brake Control</b> , <b>Floor Mat</b> driver, carpet, <b>Freightliner Information Center</b> (see Freightliner's owners manual), <b>Map Lights (2)</b> , <b>Monitor System</b> rearview, color, single camera & 1-way audio, Sony® <b>Power Door Locks</b> keyless entry w/remote, <b>Powerpoints (3)</b> 12-volt DC, <b>Shades (front)</b> wraparound, pleated w/pull cords, light filtering, cab windows, <b>Steering Wheel</b> custom, SmartWheel™ w/power assist, tilt, <b>Sunvisors (2)</b> powered, <b>Trim Panel</b> driver & passenger sides, <b>Window (driver)</b> full slider w/screen, dual-glazed, <b>Window (passenger)</b> partial slider w/screen, dual-glazed, <b>Windshield Wipers</b> intermittent
0	0	0	0	0	<b>GPS Navigation System</b>

36RD	36GD	40FD	40KD	40AD	Cab Area & Driver Conveniences
0	0	0	0	0	<b>Spotlight</b> roof-mounted w/wireless remote
S	S	S			<b>Sunvisor</b> center-mounted
0	0	0	0	0	<b>Trip Computer</b> TripTek™
36RD	36GD	40FD	40KD	40AD	Entertainment
S	S	S	S	S	<b>CB Prep</b> antenna, antenna lead, 12-volt DC power supply, <b>CD Holder</b> , <b>Entertainment Center (Exterior)</b> AM/FM radio, CD player w/remote, DC receptacle, AC duplex receptacle, TV jack, radio antenna, speakers (2), lockable compartment.  <b>(Cab)</b> AM/FM/stereo, cassette/CD, remotes, roof-mounted flexible rubber antenna, speakers (4), weather band, <b>Radio Power Switch</b> main/auxiliary battery, <b>Satellite System Ready</b> , <b>Deluxe Sound System</b> w/5-channel QSround™ sound, amplifier, cube speakers (5), bass speakers (2), <b>Stereo System (Bedroom)</b> AM/FM/CD Player, Audiovox®, recessed cube speakers (2), bass speaker, <b>Telephone</b> input & interior jacks, <b>TV Enhancement Package</b> antenna (amplified), interior jack(s), coax wiring, cable input, exterior jack, reminder light, <b>VCR/DVD Combo</b> stereo w/remote, <b>Video Selection System</b>
0	0	0	0	0	<b>CB Radio</b>
0	0	0	0	0	<b>Compact Multi-Disc Changer</b> w/remote & 10-disc changer
0	0	0	0	0	<b>Entertainment Center (Exterior) w/TV &amp; DVD<sup>5</sup></b> AM/FM radio, DVD w/remote, DC receptacle, AC duplex receptacle, TV AC, color, stereo w/remote, 20" flat-screen, RCA (36RD & 40FD), 24" flat-screen, Sony® (40AD & 40KD), speakers (2), bass speaker, storage compartment
0	0	0	0	0	<b>Radios (4)</b> 2-way
0	0	0	0	0	<b>Satellite Dish Antenna</b> RV digital, manual, elevation sensing unit
0	0	0	0	0	<b>Satellite Dish Antenna</b> , RV digital, power
0	0	0	0	0	<b>Satellite System</b> RV digital, in-motion
0	0	0	0	0	<b>Satellite Radio</b> antenna, docking port, receiver, Sirius® (includes one-year, pre-paid subscription)
S	S	S	S	S	<b>TV 20"</b> AC color, bedroom, flat-screen, stereo w/remote, remote extenders, Sony®






36RD	36GD	40FD	40KD	40AD	Entertainment
S					<b>TV 20"</b> AC color, bedroom, flat-screen LCD, stereo w/remote, remote extenders, Sharp®
S	S		S		<b>TV 24"</b> AC color, front cabinet, flat-screen, stereo w/remote, Sony®
		S	S		<b>TV 27"</b> AC color, front slideout entertainment center, flat-screen, stereo w/remote, Sony®



36RD	36GD	40FD	40KD	40AD	Interior
S	S	S	S	S	<b>Accessory Package</b> rechargeable flashlight, rechargeable hand-held vacuum cleaner, <b>Ceiling</b> vinyl, <b>Light</b> wall lamp, <b>Lights</b> ceiling w/wall switches, incandescent, <b>Lights</b> fluorescent, recessed, galley, dinette, lounge w/2-way wall switches, <b>Lights</b> halogen, bedroom, lounge, galley, <b>Lights</b> reading, <b>Shade Vent Package</b> , <b>Shades</b> pleated, day/night, <b>Sliding Stepwell Cover Panel</b> powered, <b>Wainscoting</b> w/chair rail, <b>Windows</b> flush-mounted, dual-glazed/thermo-insulated
0	0				<b>Fan</b> ceiling, bedroom
S			S		<b>Picture</b>

36RD	36GD	40FD	40KD	40AD	Cabinetry
0	0	0	0	0	<b>Portsmouth Oak</b> stile-and-rail construction w/arched raised-panel inserts on upper doors, square raised-panel inserts on lower doors
0	0	0	0	0	<b>Concert Cherry</b> stile-and-rail construction w/arched raised-panel inserts on upper doors, square raised-panel inserts on lower doors
0	0	0	0	0	<b>Washed Maple</b> stile-and-rail construction w/arched raised-panel inserts on upper doors, square raised-panel inserts on lower doors
0	0	0	0	0	<b>Honey Cherry</b> stile-and-rail construction w/arched raised-panel inserts on upper doors, square raised-panel inserts on lower doors

36RD	36GD	40FD	40KD	40AD	Countertops
S	S	S	S	S	<b>Solid-Surface</b> galley & bath, Corian®

36RD	36GD	40FD	40KD	40AD	Floorcovering
S	S	S	S	S	<b>Carpeting</b> w/pad, <b>Ceramic Tile</b> galley, bath & cab

36RD	36GD	40FD	40KD	40AD	Furniture
	0				<b>Banquette<sup>5</sup> (Fabric or UltraLeather HP™)</b> w/throw pillows, access to storage below
0	0	0	0	0	 <b>Full Comfort Dinette (Fabric or UltraLeather HP™)</b> access to storage below, child seat tether anchor
			S		<b>Buffet</b> cabinet w/wood top
			0		<b>Buffet</b> cabinet w/solid-surface top, Corian®
		S			<b>Chair (Fabric)</b> lounge, hoop-base
	S				<b>Chair (Fabric)</b> lounge, hoop-base, cabinet w/table
	0	0			<b>Chair (UltraLeather HP™)</b> lounge, hoop-base
S	S	S	S	S	<b>Dining Table &amp; Chairs (2)</b> free standing, (2) folding
		S			<b>J-Lounge (Fabric)</b> bottom storage drawer, throw pillows, Flexsteel®
		0			<b>J-Lounge (UltraLeather HP™)</b> bottom storage drawer, throw pillows, Flexsteel®
S	0	0		0	<b>Lounge Chair<sup>5</sup> (UltraLeather HP™)</b> Euro w/ottoman
0	0	0	0	0	<b>Multi-Function Table &amp; Chairs (2)</b> free standing, (2) folding
	S	S	S		 <b>Multi-Position Lounge (Fabric)</b> w/throw pillows (75" x 60")
		0	0	0	 <b>Multi-Position Lounge (UltraLeather HP™)</b> w/throw pillows (75" x 60")
S	S				 <b>Multi-Position Lounge (Fabric)</b> w/throw pillows (75" x 70")
0	0				 <b>Multi-Position Lounge (UltraLeather HP™)</b> w/throw pillows (75" x 60")

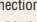
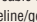
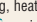
36RD	36GD	40FD	40KD	40AD	Furniture
0	0	0	0	0	 <b>Multi-Position Lounge (Fabric or UltraLeather HP™)</b> dual recliners w/throw pillows (75" x 60")
		0	0	0	 <b>J-Lounge style (Fabric or UltraLeather HP™)</b> (70" x 60")
			0	0	<b>Sofa (Fabric or UltraLeather HP™)</b> access to storage below, throw pillows

36RD	36GD	40FD	40KD	40AD	Galley
S	S	S	S	S	<b>Countertop</b> w/backsplash, Corian® <b>Faucet</b> single-control w/pullout sprayer, Moen® <b>Lights</b> fluorescent on ceiling & under cabinet, <b>Microwave/Convection Oven</b> w/exterior vent range fan, residential 30", stainless steel, Sharp® <b>Mirror(s)</b> , <b>Pantry<sup>5</sup> Range Cover</b> flush-mounted (countertop material), <b>Range Top</b> 3-burner w/storage below, recessed, sealed burners, stainless steel, Amana® <b>Refrigerator/Freezer</b> large double-door w/icemaker, stainless steel, Norcold® <b>Roof Vent</b> powered ventilator fan w/rain sensor, <b>Silverware Tray</b> , <b>Sink</b> double-bowl, stainless steel, recessed, w/sink covers (countertop material), <b>Towel Rack</b> wire, <b>Wastepaper Basket</b> , <b>Water Purification System</b> Everpure®
	S				<b>Countertop Extension</b> flip-up
	S				<b>Cutting Board</b> slideout
			0		<b>Dishwasher</b> under counter, built-in
0	0		0		<b>Dishwasher<sup>5</sup></b> drawer-style, under counter, built-in
S	S		S		<b>Island Cabinet</b> w/solid-surface countertop
			S		<b>Island Storage Bin</b> large, roll-out
0	0	0	0	0	<b>Microwave/Speedcook Oven</b> w/range fan, residential 30", stainless steel, G.E. Advantium™
0	0	0	0	0	<b>Range<sup>5</sup></b> 3-burner w/large oven, glass door w/storage below, recessed, sealed burners, stainless steel, Amana®
0	0	0	0	0	<b>Refrigerator/Freezer<sup>5</sup></b> 4-door w/icemaker, stainless steel, Norcold®

36RD	36GD	40FD	40KD	40AD	Bath
S	S	S	S	S	<b>Cabinet</b> lavatory, <b>Cabinet</b> linen, <b>Cabinet</b> medicine, <b>Faucet (lavatory)</b> dual-control, Moen® <b>Faucet (shower)</b> single-control w/flexible showerhead, Posi-Temp® Moen®, <b>Light</b> shower, <b>Light</b> fluorescent, recessed, <b>Lights</b> make-up, <b>Robe Hook(s)</b> , <b>Roof Vent</b> insulated, power w/rain sensor, private toilet room, <b>Shower</b> w/wall surround, <b>Shower Door</b> textured glass, <b>Shower Head</b> hand-held, <b>Sink</b> oval, <b>Soap Dispenser</b> , <b>Skylight</b> , <b>Tissue Holder</b> , <b>Toilet (porcelain)</b> , <b>Wall Chair Rail</b>
			S	S	<b>Magazine Rack</b>
S	S	S		S	<b>Shower Seat</b> fold-down
S		S	S	S	<b>Towel Bar</b>
	S	S	S	S	<b>Towel Ring(s)</b>

36RD	36GD	40FD	40KD	40AD	Bedroom
S	S	S	S	S	<b>Bed</b> Sleep Number® queen-size mattress by Select Comfort™ w/underbed storage, bedspread, pillows, throw pillows, <b>Cabinet</b> wardrobe, carpeted floor, cedar lined, clothes rod, light, shelf, <b>Headboard</b> , <b>Lights</b> reading, <b>Light</b> decorative ceiling w/dimmer, <b>Nightstands</b> , <b>Powerpoint</b> 12-volt DC receptacle, <b>Wall Chair Rail</b>
			0		<b>Bed</b> Sleep Number® king-size mattress by Select Comfort™
	0	0			<b>Cabinet</b> lavatory, <b>Cabinet</b> medicine, <b>Faucet (lavatory)</b> dual-control, Moen®, <b>Lights</b> make-up, <b>Sink</b> oval, <b>Soap Dispenser</b>
			S		<b>Chair (Fabric)<sup>5</sup></b> lounge, w/ottoman, Flexsteel®
	S	S	S		<b>Chest of Drawers</b>
S	S	S	S		<b>Light(s)</b> decorative wall lamp(s)
S	S				<b>Mirror(s)</b>
S	S				<b>Vanity Cabinet</b>

36RD	36GD	40FD	40KD	40AD	Exterior
S	S	S	S	S	<b>Air Horns</b> roof-mounted, <b>Awning</b> slideroom cover, <b>Awning<sup>5</sup></b> patio, entrance door, electric, <b>Awning Rails</b> w/rain gutters, <b>Door</b> entrance w/separate screen door, deadbolt lock, remote & touch pad entry, <b>Entrance Door Step</b> double, electric w/doorjamb switch, <b>Full-Body Paint Options</b> Bluestone, Deep Mahogany, Harvest, <b>Ladder</b> , <b>Lights</b> fog lamps, <b>Light</b> porch & stepwell w/interior switch, <b>Light</b> under hood, <b>Lights</b> compartment, <b>Light</b> service, driver-side, <b>Lights</b> auxiliary docking lamps, <b>Locking Fuel-fill Doors</b> , <b>Mirrors</b> electric remote w/defrost, full body paint color, <b>Mud Flaps (2)</b> rear, <b>Mud Guard</b> full-width, rear <b>Receptacle</b> AC duplex, <b>Sidewall Skin</b> 1-piece smooth fiberglass, high-gloss, <b>Storage Compartments</b> smooth valance panels, trunk liner, gas cylinders, Tri/Mark® KeyOne™ System, paddle latch, lights
0	0	0	0	0	<b>Awning<sup>5</sup></b> windows
0	0	0	0	0	<b>Compartment Tray<sup>5</sup></b> slideout
0	0	0	0	0	<b>Front Exterior Protective Mask</b>
0		0	0	0	<b>Refrigerator/Freezer<sup>5</sup></b> (portable, requires slideout tray option)
	0	0	0	0	<b>Step Ladder</b> folding
	0	0	0	0	<b>Storage Box<sup>5</sup></b> slide-out, upper shelf & fold down door
0	0	0	0	0	<b>Undercoating</b>

36RD	36GD	40FD	40KD	40AD	Systems
S	S	S	S	S	<b>Automotive Heater/Air Conditioner</b> , <b>Auxiliary Start Circuit</b> , <b>Batteries (Coach) (3)</b> deep cycle, <b>Battery (Coach)</b> disconnect system, <b>Battery Digital Voltmeter</b> , <b>Battery Charge Control</b> automatic dual, <b>Central Air Heat Pump</b> , <b>Drain</b> 1 1/2" water tank, <b>Electrical Distribution System</b> AC & DC breaker panels, 50-amp. electronic converter/charger, <b>Furnace</b> 40,000 BTU, low profile, <b>Generator</b> 7,500 watt, Onan® Quiet Diesel™ <b>Generator/Shoreline Automatic Changeover Switch</b> , <b>Converter/Inverter/Charger<sup>5</sup></b> DC/AC, 2,000 watt w/remote panel, <b>ONE PLACE™</b> systems center, wall-mounted, <b>POWERLINE™</b> energy management display, courtesy light, generator hourmeter gauge, generator start/stop switch, holding tank levels, LP tank level, solar panel/battery charger light, water heater switch, water heater on light & pilot indicator light, water pump switch, water tank level, <b>Power Cord</b> 50-amp., <b>Service Center (Drainage/Water)</b> drainage valves, holding tank flushing system, gravity water fill, city water hookup/tank diverter fill, drain for fresh water system, exterior wash station w/pump switch, soap dispenser,  <b>QuickPort</b> service connection hatch, monitor panel, paper towel holder, portable satellite hookup, 20' sewer hose w/  <b>QuickConnect</b> coupling valve, <b>Service Center (Electrical)</b> cable inputs, power cord,  <b>QuickPort</b> service connection hatch, shoreline/generator automatic changeover switch, telephone input, <b>Solar Panel</b> 10 watt battery charger, <b>Tank</b> flushing system, black tank only, <b>Tank</b> holding, heated compartment, <b>Tank</b> LP, permanent mount w/gauge, <b>TRUEAIR™</b> residential central air conditioning system, <b>TRUELEVEL™</b> holding tank monitoring system, <b>Water Heater</b> 10-gallon electronic ignition, LP gas/120 vac w/motoraid, <b>Water System Winterization Package</b> water heater bypass valve & siphon tube, <b>Water Hookup</b> city, <b>Water Pump</b> demand, variable speed, <b>Washer/Dryer Prep</b> , <b>Water Tank Fill</b> pressurized city hookup w/diverter valve, <b>Water Tank Fill</b> door, locking, gravity
			S	S	<b>Furnace</b> 25,000 BTU, low profile, secondary
0	0	0	0	0	<b>Power Cord Reel</b> powered, 12V
0	0	0	0	0	<b>Vacuum Cleaner</b> central, Dirt Devil®
0	0	0	0	0	<b>Washer/Dryer Combination</b>
0	0	0	0	0	<b>Water Supply Hose w/Reel</b> powered, 12V

36RD	36GD	40FD	40KD	40AD	Slideouts
S					<b>Slideout Room</b> rear RH, vanity/shirt closet w/slideroom cover
		S			<b>Slideout Room</b> rear RH, vanity/TV w/slideroom cover
S	S				<b>Slideout Room</b> rear LH, wardrobe w/slideroom cover
		S	S	S	<b>Slideout Room</b> rear LH, bed w/slideroom cover
S	S				<b>Slideout Room</b> front LH, sofa/galley, <a href="#">STORE MORE™</a>
	S				<b>Slideout Room</b> front LH, sofa/dining, <a href="#">STORE MORE™</a>
S					<b>Slideout Room</b> front RH, refridge/dining, <a href="#">STORE MORE™</a>

36RD	36GD	40FD	40KD	40AD	Slideouts
			S		<b>Slideout Room</b> front RH, J-Lounge/galley
		S			<b>Slideout Room</b> front RH, TV/refridge, <a href="#">STORE MORE™</a>
			S		<b>Slideout Room</b> front RH, TV/dining/refridge

36RD	36GD	40FD	40KD	40AD	Safety
S	S	S	S	S	<b>Assist Bars</b> interior, <b>Assist Handle</b> exterior, lighted, acrylic w/logo, <b>Bumpers</b> front & rear, <b>Child Seat Tether Anchor</b> , <b>Detectors/Alarms</b> LP leak, smoke, carbon monoxide, <b>Fire Extinguisher</b> 10 B.C., <b>Ground Fault Interrupter</b> , <b>Light</b> center high-mount brake lamp, <b>Light(s)</b> courtesy w/wall switch(es), <b>Seat Belts</b> cab, 3-point, <b>Seat Belts</b> lap (in selected areas), <b>Window</b> escape, <b>Windshield</b> laminated safety glass
0	0	0	0	0	<b>Security Vault</b> key lockable

36RD	36GD	40FD	40KD	40AD	Warranty <sup>7</sup>
S	S	S	S	S	<b>12-month/15,000-mile basic limited warranty<sup>8</sup></b> , <b>36-month/36,000-mile warranty on structure<sup>5</sup></b> , <b>10-year limited parts &amp; labor warranty on roof skin<sup>8</sup></b>

- The height of each model is measured to the top of the tallest standard feature and is based on the curb weight of a typically equipped unit. The actual height of your vehicle may vary by several inches depending on chassis or equipment variations. Please check with your dealer for further information.
- Horizon floorplans feature a wide-body design — over 96". In making your purchase decision, you should be aware that some states restrict access on some or all state roads to 96" in body width. Before making your purchase decision, you should confirm the road usage laws in the states of interest to you.
- The load capacity of your motor home is designated by weight, not by volume, so you cannot necessarily use all available space when loading your motor home.
- Capacities shown are tank manufacturer's listed water capacity (W.C.). Actual filled LP capacity is 80% of listing due to overfilling prevention device on tank.
- Not all items available in combination.
- Actual towing capacity is dependent on your particular loading and towing circumstances which includes GVWR, GAWR, and GCWR as well as adequate trailer brakes. Please refer to the Operator's Manual of your vehicle for further towing information.
- See separate chassis warranty details provided in your owner's packet.
- See your dealer for complete warranty information.
- Capacities are based on measurements prior to tank installation. Slight capacity variations can result due to installation applications.

NA Not Available

S Standard

O Optional

Winnebago Industries® continuing program of product improvement makes specifications, equipment, model availability and prices subject to change without notice. Comparisons to other motor homes are based on the most recent information available.

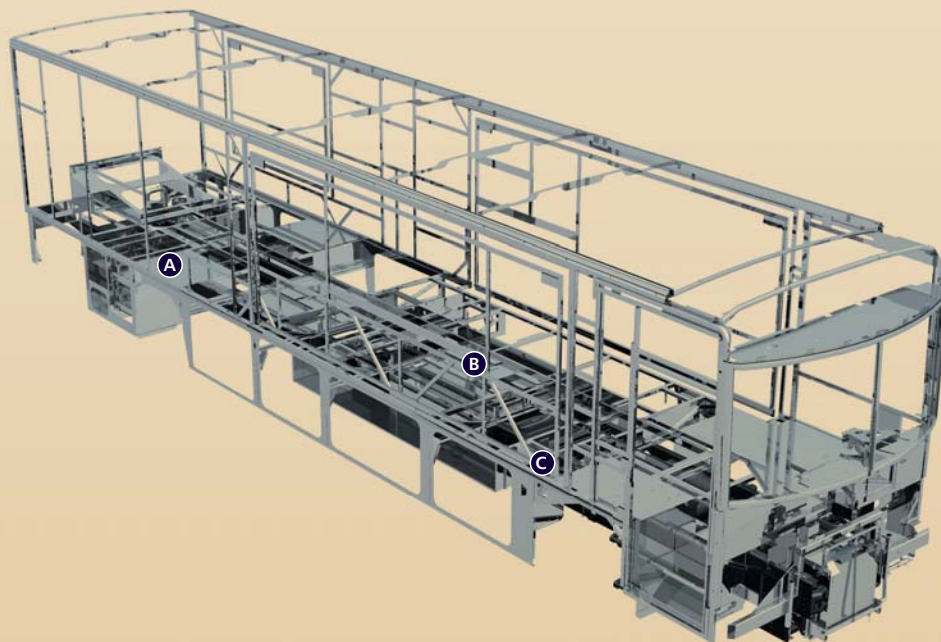


**Not all motor homes are created equal.** SuperStructure® is the term given to Winnebago Industries' structural motor home design and construction. Rather than a single component, it is the culmination of design integration that incorporates steel and aluminum sub-structures, composite-design laminated floor risers, interlocking joint technology and Thermo-Panel® floor, roof and sidewalls to form an incredibly strong, durable vehicle body.

**A Laminated risers** feature a welded aluminum core for superior strength and provide a stable base for the floor structure and storage compartments.

**B Critical steel components** are treated using an advanced electrodeposition coating process that provides superior corrosion protection.

**C The foundation substructure** maximizes longitudinal and cross-coach support.



**Interlocking joint construction** utilizes advanced aluminum structural components to create integrated floor-to-sidewall and sidewall-to-roof joints. This design effectively distributes the weight of the walls and roof, making a stronger and more durable body than competitor designs that require screws to carry the weight.

**We invented Thermo-Panel® sidewall construction** and, over the years, have perfected this innovative composite construction process. It combines an exterior fiberglass panel, high-density block foam insulation and welded aluminum support structures to create some of the strongest, most durable and lightweight sidewalls in the industry.

**Built to a higher standard.** The Horizon features a crowned, one-piece fiberglass roof, backed with a 10-year limited parts-and-labor roof skin warranty. Fiberglass offers superior strength, attractiveness and durability over the rubber roofs found on many competitive models which can chalk, streak and degrade over time. Fiberglass also provides increased puncture and tear resistance.



1-year-old Itasca fiberglass roof



1-year-old competitor's rubber roof



**Committed to service.** We back our motor homes with the industry's best service after the sale.

- 12-month/15,000-mile basic limited warranty
- 36-month/36,000-mile warranty on structure
- Standard 10-year limited parts-and-labor roof skin warranty
- Complimentary 24-hour roadside assistance program
- TripSaver Fast Track Parts. TripSaver guarantees that in-stock warranty parts ship directly to your dealer within 24 hours.
- National dealer service network



**Recognized quality.** Recreation Vehicle Dealer Association members annually rate RV manufacturers on the quality of their products, and sales and service support. Winnebago Industries has achieved the coveted Quality Circle award every year since its inception, the only RV manufacturer to do so.



**WARNING: Joining WIT has been known to cause excessive fun.** Winnebago-Itasca Travelers (WIT) is a club for owners of Winnebago Industries motor homes. WIT is a great way to meet people and offers you:

- Caravans and rallies
- Local and state group activities
- RV travel benefits

**winnebagoind.com**  
NYSE listing: WGO

For Sales and Service Information Contact:



©2004 Winnebago Industries, Inc.



Printed in USA

Seat belts are your most important hookup. Always buckle up.