

2006

DAMON MOTOR COACH

TUSCANY



Elevating the motorhome experience.



Tuscany model 4074, Peppermill Court décor, Cherry wood.

Elevating the motorhome experience.

Since its introduction in 2005, the stylish Tuscany diesel pusher has been Damon's masterwork — one of the most luxurious motorhomes on the market today.

For 2006, we proudly announce that Tuscany is even better. Just about everything inside and outside has been improved, with more amenities, more standard features, more horsepower and fewer options (because most of them are now standard). More than ever, Tuscany is loaded with comfortable surroundings, amenity-rich luxury and an incredibly long list of valuable standard features, including high ceilings, more storage and accessories.

But one thing isn't new for 2006. Tuscany's price tag remains low in relation to the high-end motorhomes with which it compares. Some things never change.



Flexsteel® driver/passenger seat.



Tuscany model 4074, Peppermill Court décor, Cherry wood.

You'll never have to leave luxury behind.

Fresh for '06.

Tuscany offers a completely new front-end cap, including newly designed hood, headlights, clearance lights and an enormous windshield that dramatically increases your field of vision.

The dash has been revamped as well, now including a three gauge IP panel, ABS dash pod, a 7-inch back up monitor for safety's sake and gooseneck map lights. Plus the dash area is now padded for extra safety.

Window size increases for 2006 — larger cockpit windows for driver and passengers, plus larger windows in the living room slide-out.

Quality is always in the details, and in the Tuscany it includes elegant decorative feet below the kitchen cabinets, wood arches on the wardrobe and in the hallways, stylish glass inserted on the front overhead and decorative slide-out fascia trim.

There are many more upscale attributes. Take a look at the new electronic control panel above Tuscany's entry door and the rugged steel reinforcement in the front overhead. And check out the new automatic hydraulic leveling jacks and the new Flexsteel® driver and passenger seats with adjustable arms.



Paint

Gorgeous full-body exterior paint packages will give your Tuscany a distinctively upscale look that few motorhomes can match.



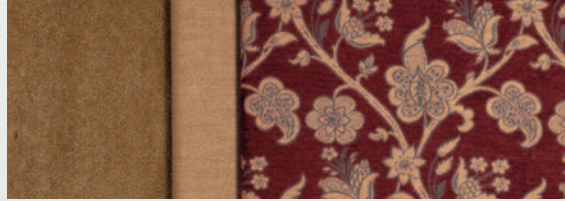
Mediterranean Blue



Venetian Red

Décor

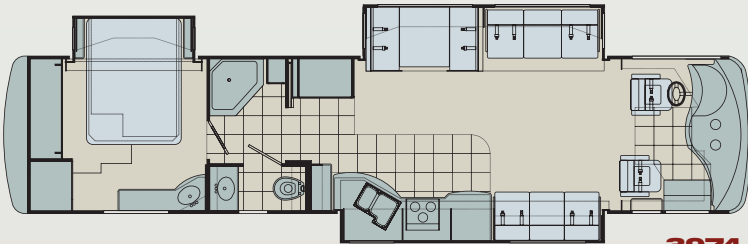
Damon's interior designers and engineers have created a choice of exciting environments that not only help you feel right at home, but also lend a sense of your personality to the Tuscany.



Cajun Spice

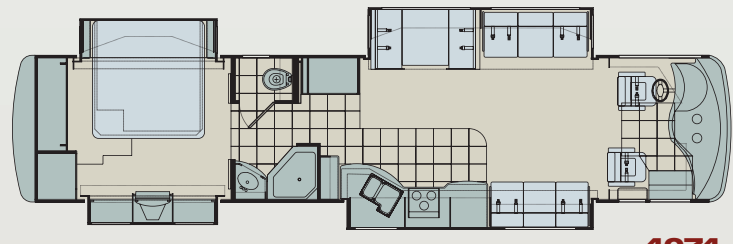


Peppermill Court



3974

Triple slideout. Dual vanities. Residential kitchen countertops.



4074

Quadruple slideout. Large living space. King-size bed.

Floor Plans

Whichever Tuscany floor plan you choose, you can be sure it's been thoughtfully created to provide the roomiest, most comfortable, most convenient travel living experience you've ever had.

Value by Design. It's our driving force.

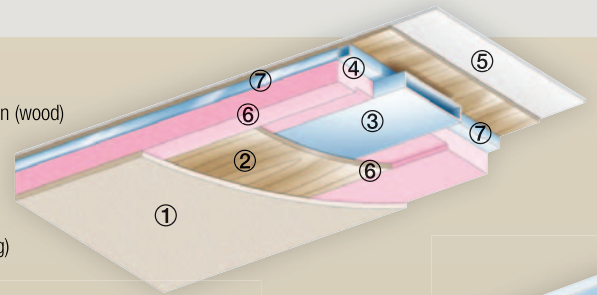
If it seems like most of our motorhomes are loaded with features, you're right. It's part of our "Value by Design" way of doing business. You see, we become more efficient when we offer more of your favorite amenities standard. Construction is more streamlined. And you get more motorhome. For less. This is just one of the ways we design more value into every motorhome we manufacture.

In addition, unlike many of our competitors who produce motorhomes, towables and other products, the sole focus of our business is Class A motorhomes. We believe this simplifies our manufacturing process and helps us focus on doing a single job exceptionally well. Doing that job well also means using only high-quality materials, components and state-of-the-art construction techniques. All told, it's what we call, "Value by Design."

Value by Design. It's more than a slogan; it's our way of delivering more motorhome for your money.

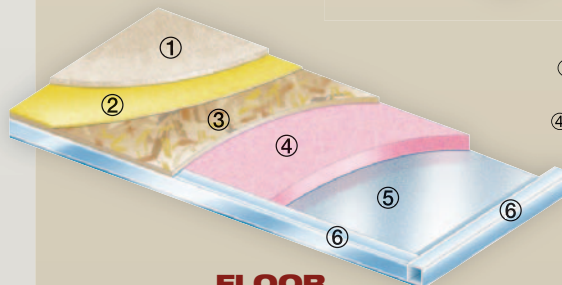
ROOF

- ① Padded ceiling
- ② Luan (wood)
- ③ Air conditioning duct
- ④ Luan (wood)
- ⑤ TPO roofing
- ⑥ Insulation
- ⑦ Aluminum frame (tubing)



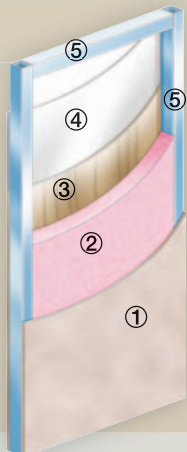
SIDEWALLS

- ① Interior panel
- ② Insulation
- ③ Luan backer (inside)
- ④ High gloss gel coat (outside)
- ⑤ Aluminum frame (tubing)



FLOOR

- ① Carpet
- ② Padding
- ③ Structurwood® floor
- ④ Insulation
- ⑤ Galvanized metal
- ⑥ Steel frame (tubing)

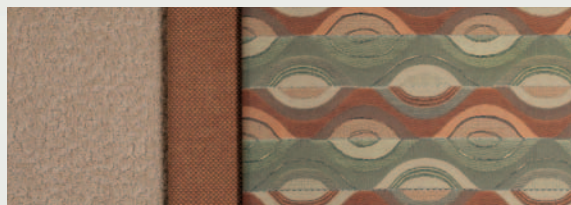




Flamenco Black

Stylish surroundings.

Peruse the fabrics, paint colors, wood styles and other options. This is where you'll really see just how much value we build into Tuscany. And the choices are as endless as the highways you drive.



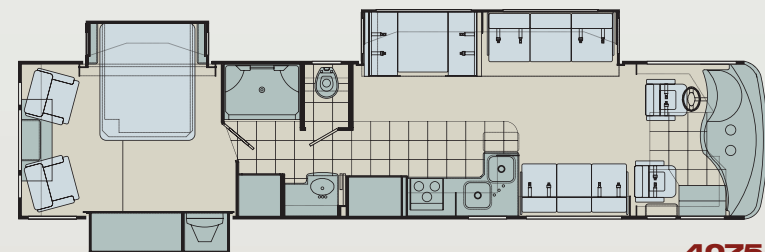
Sunrise Park



Cherry

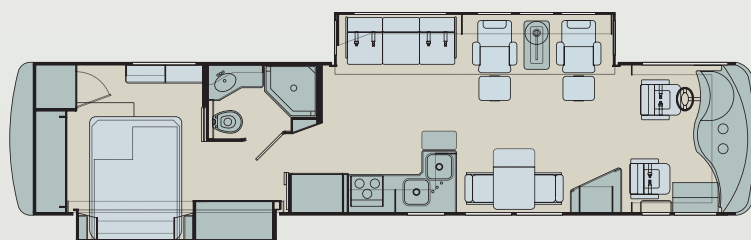


Honey Maple



4075

Double slideout. Dual zone living. Extra large shower.



4077

Dual slideout. TV in living room entertainment center. Extra wardrobe space.

Damon Construction

Some people call this overbuilt, we call it peace of mind.

Aluminum Framing

All wall openings for doors, windows and other components are framed in aluminum tubing with welded joints. This strengthens the coach body. The 5 1/2 in. welded aluminum header provides additional strength in slide room openings.

Angled Supports

The angled supports in our sidewalls provide additional stability and strength.

CHASSIS

Quality construction starts with the chassis. And Tuscany uses only the finest: a powerful, 350-hp Caterpillar® engine and a rugged, raised-rail Freightliner® chassis.

Utilities

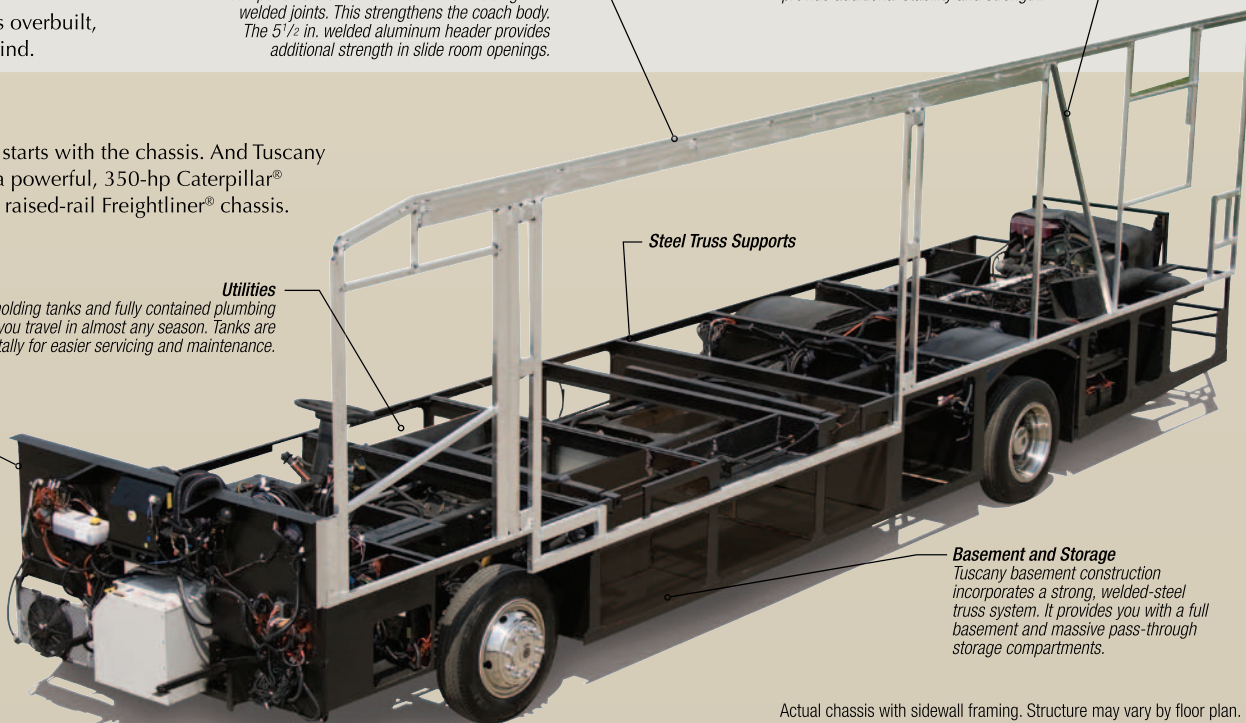
Tuscany's heated holding tanks and fully contained plumbing systems let you travel in almost any season. Tanks are mounted horizontally for easier servicing and maintenance.

Steel Firewall

Steel Truss Supports

Basement and Storage

Tuscany basement construction incorporates a strong, welded-steel truss system. It provides you with a full basement and massive pass-through storage compartments.



Actual chassis with sidewall framing. Structure may vary by floor plan.

Tuscany standard specifications and features

Bathroom

Full-height fiberglass shower w/door
 Skylight in shower
 Obscure glass window in private stool area (N/A: 4077)
 Power vent
 Foot-flush porcelain toilet with sprayer
 Wallpaper border
 Ceramic tile flooring

Bedroom

Pillowtop mattress
 Bedsprad with throw pillows
 19 or 20" color TV
 Lambrequin window treatments
 Day/night shades
 Pin-up lights

Chassis

Raised-rail chassis
 350-hp Caterpillar® engine
 In-block engine heater
 Leece Neville® 160-amp, 12-volt alternator
 Allison® MH-3000 automatic transmission – 6 speed
 Exhaust brake
 Full air brakes with automatic slack adjusters (front and rear)
 Antilock brakes
 Midland® Pure-Air Plus™ heated air dryer
 Air-ride suspension system
 Sachs® shock absorbers (front and rear)
 22.5" radial tires
 "Dual action" auto hydraulic leveling jacks
 Rear steel wheel well liners
 Full-width stainless-steel stone guard with Damon stencil
 Trailer hitch (10,000 lbs.)
 Emergency start circuit

Under-hood light
 Layer of neoprene vibration dampener
 Dual fuel fills
 Aluminum wheels (set of four)

Cockpit

Molded ABS dash w/soft touch vinyl
 Electronically controlled dash air conditioning
 Premium AM/FM/CD player (single disc, in-dash)
 Premium 4-speaker system with powered subwoofer
 Electronic cruise control
 Padded steering wheel
 Douglas® tilt/telescoping steering column
 Map lights
 Dash fans
 Air horns
 Tinted windshield
 Windshield privacy shade
 Front-mounted power mirrors with heat
 Ceramic tile entry
 Ultra-leather driver's seat with 6-way power
 Ultra-leather passenger seat with 6-way power
 3-point wall-mounted seat belts
 Storage cabinets above driver and passenger
 Electric sun visors with two manual side shades
 Backup monitor system with audio
 Drink holders

Exterior

Full-body paint package with color-coordinated slideroom awnings
 Color-coordinated electric patio awning with remote control and wind sensor
 Fog lights
 Wide-body design
 Radius-corner domed one-piece TPO roof

Rear ladder
 Aerodynamic front and rear fiberglass caps
 Side-mounted awning over slideout
 Upgraded gel-coated fiberglass sidewalls
 Locking aluminum exterior storage compartments
 Custom-designed front entry door with screen
 Black-framed, dual-pane, radius-cornered windows
 Two patio lights (one on each side)
 Lighted storage compartments
 Pass-through full basement storage
 Gas pistons on exterior storage doors
 Invisible bra

Kitchen

Refrigerator: four-door with icemaker
 Refrigerator: raised-panel hardwood front (maple or cherry)
 Cooktop
 Solid-surface range cover
 1.1 cubic-foot space-saver microwave/convection oven
 Two solid-surface sink covers
 Single-lever faucet with sprayer
 Kitchen faucet water filter
 Pantry
 Solid-surface countertops
 Solid wood cabinet doors throughout (maple or cherry)
 Ceramic tile flooring
 Booth dinette with wood-edged table (N/A: 4077)
 Freestanding dinette with four chairs (two fixed and two folding) (4077 only)
 Mini blinds
 Fantastic® power vent
 Wallpaper border

Living Area

Sofa bed (ultra-leather) (passenger's side) (N/A: 4077)
 Two Euro recliners with coffee table and lamp IPO sofa bed (driver's side) (4077 only)
 27" color TV in entertainment center with full-function remote, antenna booster and jack (4077 only)
 Hide-a-bed (décor fabric)(driver's side)
 Day/night shades
 100% continuous-filament nylon carpeting
 24" color TV in cockpit overhead with full-function remote, antenna booster and jack (N/A: 4077)
 Home theater package (VCR, DVD/CD player and 5-channel Dolby® Pro-Logic receiver amplifier)
 Soft-touch padded vinyl ceiling
 Fluorescent lighting
 Living room pin-up lights
 Aisle lights

Utilities

Air conditioner: 13,500-BTU ducted central (front)
 Air conditioner: 13,500-BTU ducted central (rear)
 Furnace: 35,000-BTU electronic ignition floor-ducted
 Water heater: 10-gallon gas/electric with electric ignition
 Water heater bypass kit
 Generator: 7.5 kW Generac® Quietpact
 Inverter: 2000-watt
 Four 6-volt Thermoil® auxiliary batteries
 Battery disconnect
 50-amp, 120-volt service with marine-type detachable power cord
 Exterior GFCI receptacle inside compartment
 Enclosed heated potable and holding tanks
 Black water tank flush
 Three-way valve for tank/city water fill
 Washer/dryer prep
 Telephone hookup
 Cable TV/satellite hookup
 DSS manual satellite dish
 Exterior shower
 Carbon monoxide, LP gas and smoke detectors
 Monitor panel with LPG readout

Popular Options

AM/FM/CD player in bedroom
 Multi-disk CD changer
 Chrome-plated front-mounted power mirrors with heat
 Ultra-leather oversized passenger seat with 6-way power and electric foot rest
 Electric step cover
 Color-coordinated window awnings
 Easy-slide storage tray in basement
 Exterior entertainment center with 20" TV
 3-burner range and oven IPO cooktop
 Buffet with additional storage and four chairs (two fixed and two folding) (N/A: 4077)
 Fantastic® power vent with rain sensor
 Two Euro recliners IPO sofa bed (passenger's side) (4075 only)
 Two Euro recliners with lounge table IPO sofa bed (passenger's side) (3976 only)
 Hide-a-bed (ultra-leather) (driver's side)
 Water heater: Motoraid® 10-gallon gas/electric with electric ignition (N/A: 3974 & 4074)
 Dual heat pumps with 15,000-BTU A/C and 12,700-BTU heat
 5-watt chassis solar battery charger
 Generator: 7.5 kW Onan® diesel
 Energy management system
 Washer/dryer combo
 DSS automatic-tracking satellite dish
 Motoraid® auxiliary rear heater
 Central vacuum system

Weights and Measures

Model	3974	4074	4075	4077
Chassis	Freightliner	Freightliner	Freightliner	Freightliner
Wheelbase	252	266	266	266
Overall Length	39'6"	40'8"	40'8"	40'8"
Overall Width	101"	101"	101"	101"
Overall Height with AC	12'7"	12'7"	12'7"	12'7"
Std. weight (approx. lbs.)	26,052	26,356	25,970	25,208
GVWR	31,000	31,000	31,000	31,000
GCWR	41,000	41,000	41,000	41,000
Freshwater (approx. gal.)	99	99	99	99
Grey/black water (approx. gal.)	50	50	50	50
LP (lbs.)	126	126	126	126
Sleeping capacity	4	4	4	4
Exterior storage capacity (cu. ft.)	195	215	215	215
Interior Drawers	15	16	17	13
Interior Drawer capacity (cu. ft.)	10	16	17	11
Fuel capacity (approx. gal.)	100	100	100	100



DAMON
MOTOR COACH

P.O. Box 2888 • Elkhart, IN 46515
 Customer Service: 800-860-3812
 Sales Department: 800-860-5658
www.DamonRV.com



DC 8/05 © 2005 Damon Motor Coach Printed in U.S.A.

Due to constant product improvements, the specifications, component parts and standard/optional equipment are subject to change without notice or obligation. Product photography or diagrams may show equipment that is optional. Damon Motor Coach reserves the right to make changes in prices and models and to discontinue models without notice or obligation. Components, parts or chassis may have been manufactured at times other than the model year indicated. All capacities are approximate and dimensions are nominal. All dry weights are based on standard model features and do not include optional features or equipment. Various RV components and features may differ to conform to local codes. Due to EPA environmental restrictions, engine power and torque ratings may change mid-year.