



# EXTERIOR PAINT

Newmar's legendary Full-Paint Masterpiece Finish™ creates a magnificent, breathtaking exterior with a remarkable endurance for life on the road. Essex's high-gloss, super clear coat keeps the dazzling Full-Paint

Masterpiece Finish looking new. And Essex's Diamond Shield front protection film guards its majestic front cap from the outside world.



*Key Biscayne*



*Mont Blanc*



*Riviera Mist*



*Venetian Sunset*



*Palazzo Café*



*Tuscan Bronze*



# INTERIOR DECOR



Palazzo Café



Riviera Mist



Key Biscayne



Venetian Sunset



Tuscan Bronze



Mont Blanc



Pearl Glazed Maple



Northern Maple



Camden Cherry



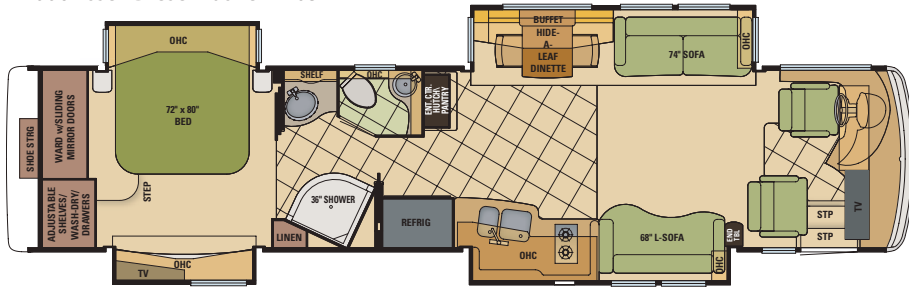
Natural Cherry



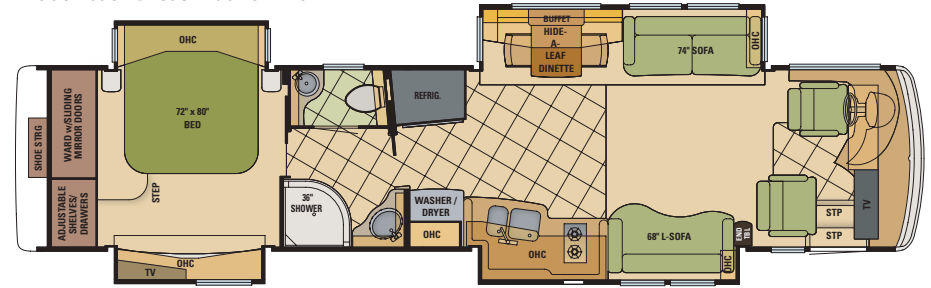
Ginger Glazed Cherry

# FLOORPLANS

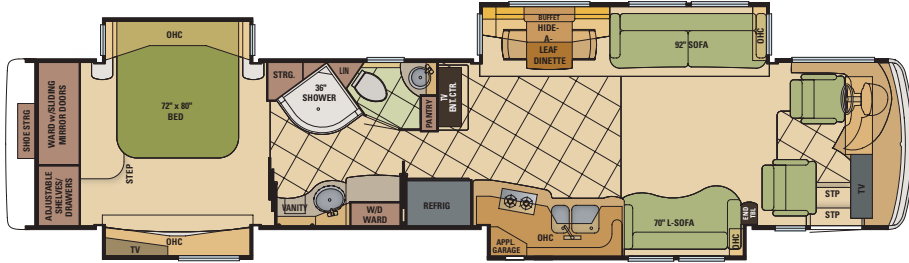
2006 Essex Diesel Pusher 4103



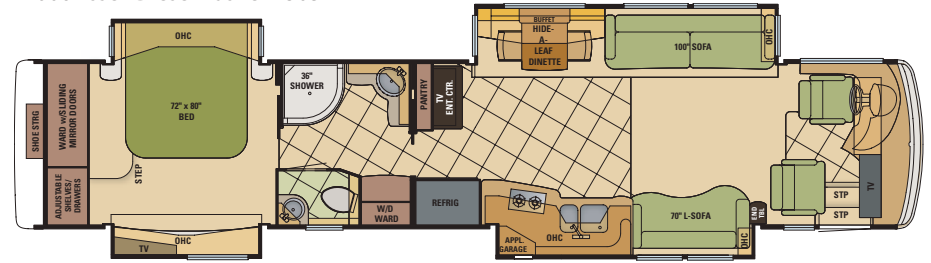
2006 Essex Diesel Pusher 4104



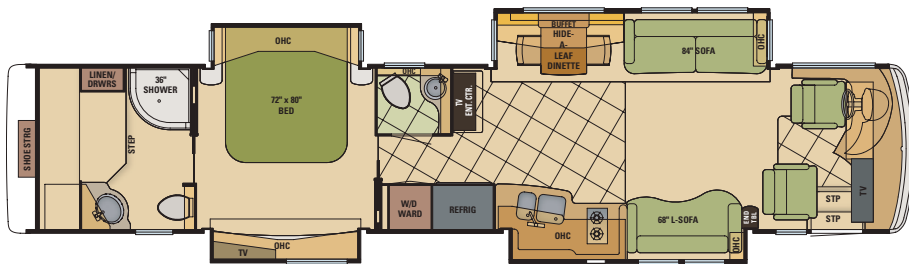
2006 Essex Diesel Pusher 4502



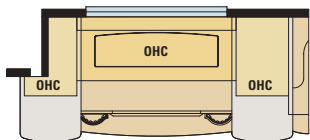
2006 Essex Diesel Pusher 4503



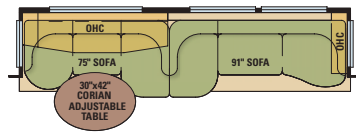
2006 Essex Diesel Pusher 4508



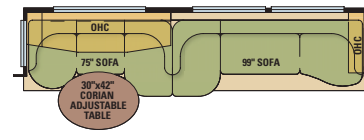
2006 Essex Diesel Pusher 4509



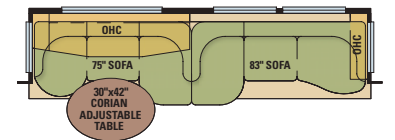
J355-Fireplace w/Power-Lift TV  
EX DP 4502, 4503



K331-Sofa/Dinette Combination  
EX DP 4502



K331-Sofa/Dinette Combination  
EX DP 4503

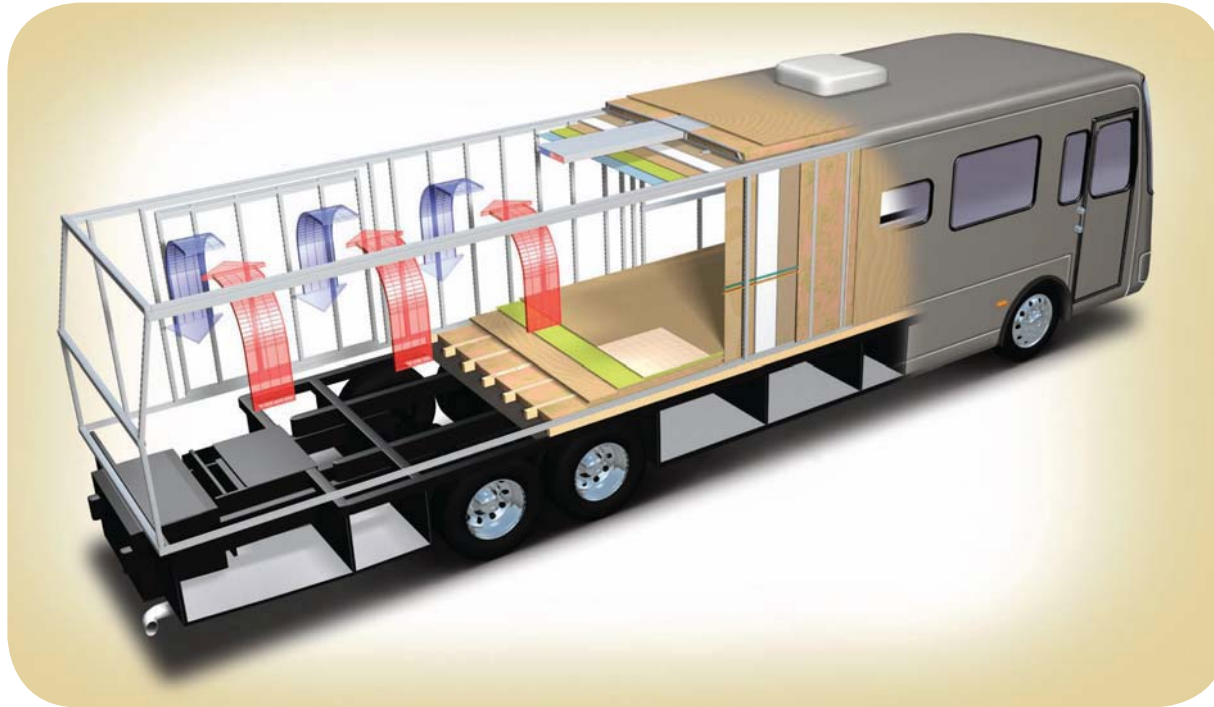


K331-Sofa/Dinette Combination  
EX DP 4508

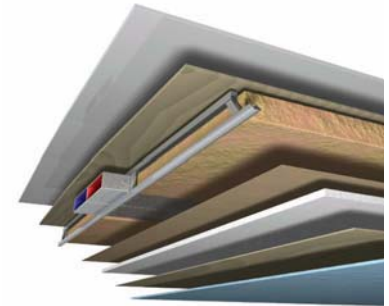


# CONSTRUCTION

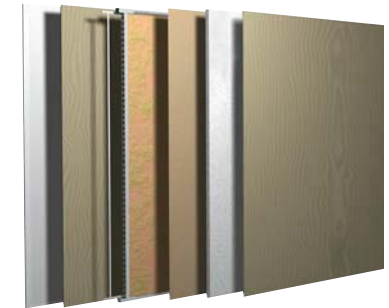
Essex is a showcase for Newmar's exacting standards, meticulous detailing and legendary craftsmanship. The sturdy coach boasts a one-piece molded fiberglass roof and 16" on-center framing like that of a fine, site-built home.



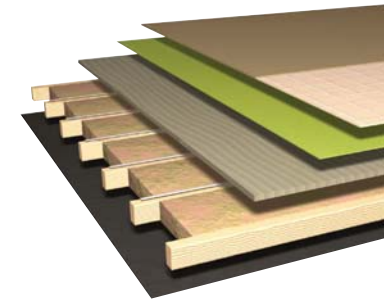
Roof R-Value = 16  
 One-Piece Molded Fiberglass Roof  
 9 mm Wood Decking  
 Aluminum Rafter Framing  
 Fiberglass Batten Insulation  
 Sikaflex  
 A/C Ducting  
 Aluminum Stringer Framing  
 Kraft Paper Vapor Barrier  
 5/8" Bead Foam  
 3/16" Panel  
 Padded Vinyl Overlay



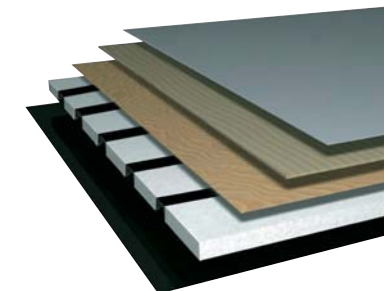
Sidewall R-Value = 11  
 Composite One-Piece Gelcoat  
 Exterior Sidewall  
 3/16" Plywood Exterior Wall  
 Fiberglass Batten Insulation  
 Sikaflex  
 5/8" Bead Foam  
 3/16" Plywood Interior Wall  
 Kraft Paper Vapor Barrier  
 Aluminum Framing with  
 3 1/2" Header above



Floor R-Value = 16  
 Carpet/Tile  
 Carpet Padding  
 5/8" Floor Decking  
 2" X 3" Wood Framing  
 Fiberglass Batten Insulation  
 Polyethylene Moisture Barrier



Basement R-Value = 4  
 Cargo Liner  
 3/8" Floor Decking  
 3/16" Luan Panel  
 1 1/2" Bead Foam  
 Aluminum Sheeting with  
 Steel Support Rails to  
 Prevent Bowing and Flexing



## NEWMAR EXPRESS LIMITED WARRANTY™

Every Essex Diesel Pusher motor coach is backed by Newmar's two-year limited warranty/unlimited miles. Ask your Newmar dealer for details.

## TOTAL COMFORT™ NEWMAR CENTRAL AIR CONDITIONING

Newmar's exceptional Total Comfort central air conditioning is standard on every Essex. The system consists of two separate fully ducted systems—one to distribute incoming cool air, the other to quickly and effectively remove warm air from your living area.



# STANDARD FEATURES

## WITH EXACTING ATTENTION TO DETAIL AND UNMATCHED FEATURES, ESSEX STANDARD IS LUXURY.

### ESSEX DIESEL PUSHER 2006 STANDARD FEATURES

#### **Chassis**

Spartan® K2 Chassis with IFS  
Cummins® ISM 500 hp  
Allison® 4000 MH Transmission  
Tag Axle  
Accuride ACCU-SHIELD™ Non-Polish Aluminum Wheels  
Four-Point Hydraulic and Air-Leveling Jacks with Automatic Control and Air Dump  
Power Tilt-and-Telescope with Burl Wood VIP Smart Wheel  
Memory Settings for Driver's Seat, Pedals, Steering Wheel and Exterior Mirrors  
Cruise Control  
Recessed Fuel Fills with Crossover to Fill from Either Side  
Back-Up Alarm  
Anti-Lock Braking System  
Front Disc Brakes  
Electronic Chassis Information Display in Dash  
Chassis Service Center  
Leece-Neville 200 Amp Alternator  
55-Degree Cramp Angle

#### **Air Conditioning and Heating**

Two 15M Penguin™ Heat Pump Central Air Conditioners (41' Floorplans)  
Three 15M Penguin™ Heat Pump Central Air Conditioners (45' Floorplans)  
Hydronic Zone Heating System  
Dash Heater and High-Output Air Conditioner  
LP Leak Detector  
Wall-Mounted Sensors for Heating and Air Conditioning  
Air Conditioning Condensation Lines through Rear Cap of Coach

#### **Appliances and Accessories**

30" GE® Convection Microwave Oven  
Two-Burner Recessed Cooktop  
Polished Corian® Range Cover  
Dometic® 13.8 Cu. Ft. Refrigerator with Auto Defrost and Icemaker

One-Piece Washer/Dryer Prep  
Sony® 32" LCD Color TV in Living Area  
Phillips® 30" LCD Mirror/Color TV/PC Monitor in Bedroom  
Pioneer® AM/FM Radio with XM Satellite Radio and Remote  
6-Disc CD Player  
Rearview Color Monitor System  
Pioneer® 5.1 Dolby® Digital Surround Sound System with CD and DVD Player  
Bose® Wave Radio with CD Player and Alarm Clock in Bedroom  
TV Antenna with Power Lift, One Exterior Jack and Two Interior Jacks  
Satellite Prep—Phone, TV Jack and Receptacle  
Exterior TV Jack on Door Side  
Cable TV Connection with RG 6 Coax  
Telephone Connection with Phone Jacks in Living and Dash Area  
Roof-Mounted Air Horns  
8.5" X 11" Safe  
Universal Remote Control  
VCR and Audio/Video Smart-Source Switch with Remote Control  
10 Bc Fire Extinguisher, Carbon Monoxide and Smoke Detectors

#### **Cabinets and Furniture**

Northern Maple Hardwood Unitized Cabinets with Raised-Panel, Double-Cathedral Cabinet Doors  
Hidden-Leaf Dinette Table with Corian® Top and Four Chairs (Two Fixed, Two Folding)\*  
Polished Corian® Countertop in Kitchen with Integrated Sink and Flush Sink Covers  
Polished Corian® Countertop with Integrated Bowl in Bathroom  
Polished Corian® Countertop on Bedroom Nightstands  
Adjustable Pullout Pantry Shelves\*  
Drawers with Dovetailed Sides, Maple Bottoms and Metal Guides  
Knife Hinges on Cabinet Doors  
Villa® Furniture  
Ultraleather Heated Driver Seat with 8-Way Power, Power Lumbar and Power Recline  
Ultraleather Heated Oversized Passenger Seat with 8-Way Power, Power Lumbar, Power Recline and Power Footrest  
Silverware Divider Tray  
Lifts on Bed Top to Access Storage Area  
Carpeted Wardrobe Bottoms with Pearl Cream Headliner on Shelves and Overhead Cabinets  
Cedar Paneling on Rear Wardrobe Wall  
Shoe Storage Shelves Recessed into Rear Cap of Rear Wardrobe Floorplans

King Koil™ Turn-Free Mattress with Matching Deluxe Bedspread, Reverse Shams, Accent Pillows and Faux Fur Throw  
King Bed with Hardwood, Raised-Panel Bed Base

#### **Electrical**

12.0 kW PowerTech Diesel Quiet Generator on Hydraulic Slide and Auto Changeover  
50 Amp Electrical Service with Flexible Cord on Power Cord Rewind Reel  
Four 6-Volt House Batteries on Pullout Tray  
Battery Disconnect Switch  
110-Volt and 12-Volt Lighting to Main Slideout  
110-Volt Exterior Receptacle on Door Side  
5-Watt Solar Panel  
3100-Watt Inverter  
Emergency Start Switch  
Automatic Generator Start  
Exterior Security Lights, One on Each Side  
Midship Side Turn Signals  
Recessed Docking Lights  
Switched Receptacle for Engine Block Heater  
Halogen Ceiling Lights Throughout  
Lighted Wardrobes with Automatic Switches  
Slideout Information Voice Module  
Manually Operated Hold-to-Run Slideout Switch  
ICC Light Switch  
Two 12-Volt Auxiliary Receptacles on Dashboard  
Interior Courtesy Lights  
Mood Lights Recessed in Ceiling, Lambrequins and Kitchen Valance  
Solar Prep for Chassis Batteries  
Daylight Headlight System  
Multi-Plex Electrical System

#### **Exterior**

Full-Paint Masterpiece Finish™ with Super Clear Coat and Diamond Shield Front Protective Film  
Convex Exterior Chrome Mirrors with Remote Control, Defrost and Turn Signals  
Automatic Entrance Door with Double Step  
Pneumatic Double Latching Front Door with a Power Flush Stepwell Cover  
Lighted Exterior Storage Compartments Controlled by Interior Master Switch  
Pantographic Basement Doors with Side-Hinged Doors under Slideouts  
Power Locking Baggage Doors  
15,000 lb. Towing Hitch with Two Extra 14-Gauge Wires

# STANDARD & OPTIONAL FEATURES

Lighted Acrylic Assist Handle at Entrance Door  
Mud Flaps  
Rear Protective Tow Guard with Stainless Steel Newmar Name Cutout  
Holding Tank Levels Displayed in Exterior Water Works Compartment  
Rear Ladder  
Squeegee in Exterior Compartment  
Undercoating

## **Interior**

Padded Vinyl Ceiling  
Lined Day/Night Pleated Window Shades and Lambrequins  
Hardwood Ornate Fascia on Living Area Slideout  
Hardwood Window Sills  
Polished Porcelain Floor Tile in Kitchen, Bathroom, Driver's Area and Entrance Door Area  
Fabrica® Carpeting with High-Density Padding in Bedroom with Sculptured Carpet in Living Area  
Raised-Panel Interior Passage Doors  
Interior Assist Handle at Main Entrance Door  
Power Driver and Passenger Side Sun Shades  
Power-Activated Sun Visors  
Power-Activated Windshield Area Privacy Shade  
Framed Decorative Pictures in Bathroom  
Kitchen Wastebasket and Convenience Light

## **Plumbing and Bath**

Demand Water System with Aquajet™ "ES" Pump  
Sewage Holding-Tank Rinse  
Thetford™ Aria Sculptured China Stool  
Towel Bar, Tissue Holder, Towel Ring and Robe Hook  
Exterior Convenience Wash Station—Hot/Cold Water, Soap and Towel Dispenser  
Fiberglass Tub/Shower and Glass Shower Door  
Decorative Decals Applied to Tub/Shower Enclosure  
Two Monitor Panels (One in Interior and One in Exterior Water Compartment)  
MANABLOC® Plumbing System  
Monoplex Water Pump Switches Located in Bathroom, Kitchen and near Gate Valves  
Auto Water-Fill System  
Delta® and Price Pfister™ Faucets in Bathroom and Kitchen  
Whole House Water Filter  
Water Filter with Drink Dispenser at Kitchen Sink  
Automatic Rewind Water-Hose Reel

## **Construction**

One-Piece Molded Fiberglass Roof with 9 MM Decking  
Gelcoated Fiberglass Exterior Sides  
Aluminum-Frame Sidewalls and Roof Construction, 16" on Center  
Power Lock Arms on All Slideout Rooms  
5/8" Foam Insulation Laminated in Sidewalls and Ceiling  
Roof R-Value Rating: 16  
Sidewall R-Value Rating: 11  
Floor R-Value Rating: 16

## **Windows, Awnings and Vents**

Double-Pane, Tinted, Safety-Glass Windows  
Fan-Tastic® Vent with Rain Sensor in Kitchen Area and Bathroom  
Skylight in Bathroom  
Driver's-Side Power Window  
A&E® 9000 Bedroom and Slideout Window Awnings  
A&E® Power Box Side Awning  
A&E® Oasis Power Front Entrance Door Awning  
A&E® Slideout Awning Covers  
Cockpit Overhead Ventilation System

## BECAUSE YOU DESERVE TO MAKE ESSEX UNIQUELY YOUR OWN, ALLOW US TO OFFER THESE OPTIONAL AMENITIES:

### ESSEX DIESEL PUSHER 2006 OPTIONAL FEATURES

#### **Appliances and Accessories**

30" GE® Speedcook Advantium™ Microwave Oven  
Norcold® 12 Cu. Ft. Four-Door Refrigerator with Icemaker and Water Dispenser  
100 lb. Capacity Norcold Freezer on Pullout Tray  
One-Piece Washer/Dryer  
Stackable Washer/Dryer in Full Length Cabinet\*  
Fisher & Paykel® Dishwasher in Drawer\*  
All-Electric Unit with Dometic®, Frigidaire® or Norcold® Refrigerator and Four Extra Batteries\*  
Sony 23" LCD Color TV in Front Overhead Cabinet\*  
Pre-Wire for High-Definition TV  
Trip Tek™ Electronic Travel Information (Displayed on Rearview Monitor)  
Pioneer® Navigation System  
Pioneer® Navigation System with Additional Monitor for Passenger

Remote-Controlled Rearview Camera  
Sideview Cameras with Image Displayed on Rearview Monitor  
Secondary Multiplex Touch Screen in Bedroom  
Entertainment Center with Sony® 32" LCD TV on Power Lift and Electric Fireplace\*  
External Entertainment Center with Sony 23" LCD Monitor, AM/FM Radio and CD Player on Adjustable Swing Arm  
KVH L-3 In-Motion Satellite without Receiver  
Central Vacuum with Deluxe Tool Kit  
Security System  
CB Radio with Antenna

#### **Cabinets and Furniture**

Camden Cherry Hardwood Cabinets  
Natural Cherry Hardwood Cabinets  
Ginger Glazed Cherry Hardwood Cabinets  
Pearl Glazed Maple Hardwood Cabinets  
Ultraleather Sofa\*  
Ultraleather Sofa/Dinette Ensemble with Two Folding Chairs\*  
Four-Poster Bed\*

#### **Electrical**

12.5 kW Onan® Diesel Quiet Series Generator  
Roof-Mounted Spotlight

#### **Exterior**

Large Storage Tray with Access from One Side or Either Side

#### **Interior**

Polished Porcelain Floor Tile Throughout Living Area with Custom Area Rug

#### **Plumbing and Bath**

Assist Handle in Tub/Shower  
Corian® Shower Walls

#### **Windows, Awnings and Vents**

Girard® Awning Package with Power Window Awnings  
Carefree® Awning Package with Power Window Awnings  
Keyless Entry

*\*Check with dealership on floorplan availability.*

# SPECIFICATIONS

Essex luxury is grand, spacious, powerful and accommodating. Here it is in black and white.

## FLOORPLAN SPECIFICATIONS

FLOORPLAN	APP. OVERALL LENGTH*	WIDTH	APP. OVERALL HEIGHT	INTERIOR WIDTH	INTERIOR HEIGHT	GREY	SEWAGE	WATER	LP	FURNACE	WATER HEATER
2006 EXDP 4103	40'11"	101.5"	12' 08"	95.5"	82"	65 gal.	45 gal.	105 gal.	32 gal.	50,000 Btu	Cont.
2006 EXDP 4104	40' 11"	101.5"	12' 08"	95.5"	82"	65 gal.	45 gal.	105 gal.	32 gal.	50,000 Btu	Cont.
2006 EXDP 4502	44' 11"	101.5"	12' 08"	95.5"	82"	65 gal.	45 gal.	105 gal.	32 gal.	50,000 Btu	Cont.
2006 EXDP 4503	44' 11"	101.5"	12' 08"	95.5"	82"	65 gal.	45 gal.	105 gal.	32 gal.	50,000 Btu	Cont.
2006 EXDP 4508	44' 11"	101.5"	12' 08"	95.5"	82"	65 gal.	45 gal.	105 gal.	32 gal.	50,000 Btu	Cont.
2006 EXDP 4509	44' 11"	101.5"	12' 08"	95.5"	82"	65 gal.	45 gal.	105 gal.	32 gal.	50,000 Btu	Cont.

## SPARTAN® CHASSIS INFORMATION

FLOORPLAN	ENGINE HP	AXLE RATIO	FUEL CAP.	WHEELBASE	FRONT GAWR**	REAR GAWR**	TAG GAWR	GVWR**	GCWR**	APP. UVW	APP. NCC
2006 EXDP 4103	500	4.33	150 gal.	248"+TAG	16,000 lb.	20,000 lb.	10,000 lb.	46,000 lb.	61,000 lb.	36,900 lb.	9,100 lb.
2006 EXDP 4104	500	4.33	150 gal.	248"+TAG	16,000 lb.	20,000 lb.	10,000 lb.	46,000 lb.	61,000 lb.	36,950 lb.	9,050 lb.
2006 EXDP 4502	500	4.33	150 gal.	296"+TAG	16,000 lb.	20,000 lb.	10,000 lb.	46,000 lb.	61,000 lb.	38,500 lb.	7,500 lb.
2006 EXDP 4503	500	4.33	150 gal.	296"+TAG	16,000 lb.	20,000 lb.	10,000 lb.	46,000 lb.	61,000 lb.	38,500 lb.	7,500 lb.
2006 EXDP 4508	500	4.33	150 gal.	296"+TAG	16,000 lb.	20,000 lb.	10,000 lb.	46,000 lb.	61,000 lb.	38,600 lb.	7,400 lb.
2006 EXDP 4509	500	4.33	150 gal.	296"+TAG	16,000 lb.	20,000 lb.	10,000 lb.	46,000 lb.	61,000 lb.	37,900 lb.	8,100 lb.

Lengths, heights, widths and dry weights are approximate. Weight will vary based on optional equipment added to the above base weight.

**GAWR:** Gross Axle Weight Rating is the maximum permissible weight for an axle.

**GVWR:** Gross Vehicle Weight Rating is the maximum permissible weight of a fully loaded motor coach.

**GCWR:** Gross Combination Weight Rating is the value specified by the manufacturer of the vehicle as the maximum allowable loaded weight of this motor coach and any towed trailer or towed vehicle.

**UVW:** Unloaded Vehicle Weight is the weight of this motor coach as built at the factory with full fuel, engine oil and coolants. The UVW does not include cargo, fresh water, LP gas or dealer-installed accessories.

**NCC:** Net Carrying Capacity is the maximum weight of all occupants, including the driver, personal belongings, food, fresh water, waste water, LP gas, tools, tongue weight of towed vehicle, dealer-installed accessories, etc., that can be carried by the motor coach.

\*Length does not include rear ladder. \*\*Specifications supplied by the chassis manufacturer.

### Spartan® K2 Chassis

The K2 chassis has set the standard in the marketplace for its strength and power. It is equipped with a powerful Cummins® 500 horsepower ISM engine, plus a brawny 16,000 lb. IFS (Independent Front Suspension). The K2 chassis allows you to pass other drivers on a steep incline with ease. And, the K2 will allow you to maneuver the motor coach like a pro. Handle tight turns with perfect precision. Nothing can get in your way when you are equipped with a Spartan K2 under your coach. For peace of mind, there is a roadside assistance program for its entire warranty period.





# HIS ESSEX



EE

S

S

e





FEED YOUR APPETITE  
FOR POWER  
AND PERFORMANCE.

Essex understands a man's perspective. You want a motor coach that has the horsepower to deliver on your toughest demands, yet still drives like a finely tuned automobile. You expect luxury to be augmented by the latest sought after equipment. And, you don't mind recognition for your wise choice in manly motor coaches.

Solid in construction and superior performance, the 2006 Essex is commanding, powerful and distinguished.

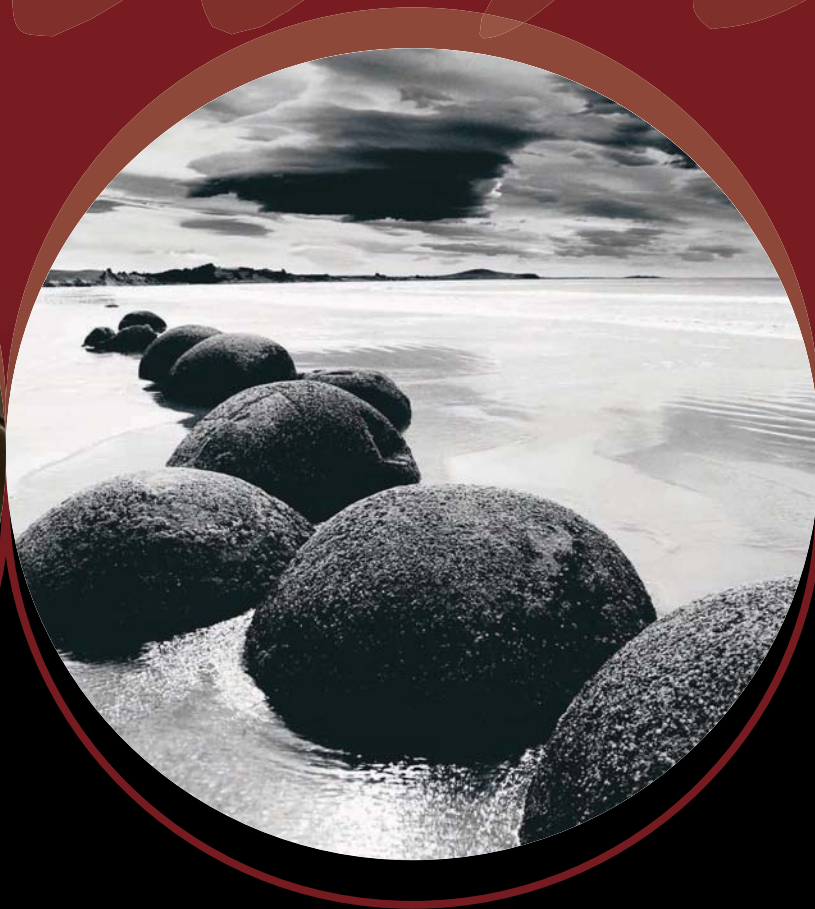
Boasting all of the expected luxury prerequisites, Essex offers aggressive body styling and well-tailored details, in addition to modern amenities like the Sony® 32" LCD color television, Pioneer® surround sound, XM satellite radio and an optional external entertainment center. And, of course, everything on *her* list of desires.

Best of all, Essex's bold, masculine handling responds effortlessly to your every command.

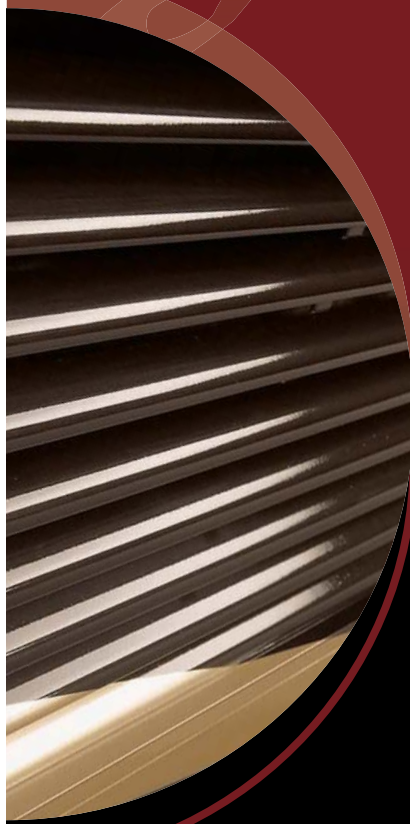
The 2006 Essex. You deserve to have it all.



*thor*



*Spartan*



R U G G E D





## IMAGINE ENOUGH POWER TO RUN A SMALL CITY.

Essex's strength is mind-blowing. It's an extraordinary coach, a vehicular heavyweight. No matter if you enjoy a life of adventure or one of quiet relaxation, you'll sit taller knowing what your powerful coach can do.

Power is the operative word. With a Spartan® K2 chassis, strong Cummins® 500 horsepower ISM engine, a brawny 16,000 lb. independent front suspension and 1550 lb.-ft. peak torque, you'll honor your boyhood dreams of ruling the road. Whether you need to pull serious weight, conquer a steep incline or maneuver a tight turn, Essex will perform.

### IMAGINE THAT IT WAS YOURS.

The quality of this gallant coach is immediately apparent. Essex is solid in construction, sturdy in appearance and a shining example of Newmar's legendary craftsmanship. Built like a fine, site-built home, every step of Essex's assembly is performed with precision and meticulous attention to detail.



Essef  
By Newmar 





These illuminated automatic entrance steps are included in the amenities along Essex's mighty exterior. The double step is perfectly timed to open with the coach's pneumatic double-latching front door.



As a preeminent luxury coach, Essex includes striking details such as these convex exterior chrome mirrors. They flank Essex's majestic front cap and include a defrost feature, remote control, memory setting and turn signals.

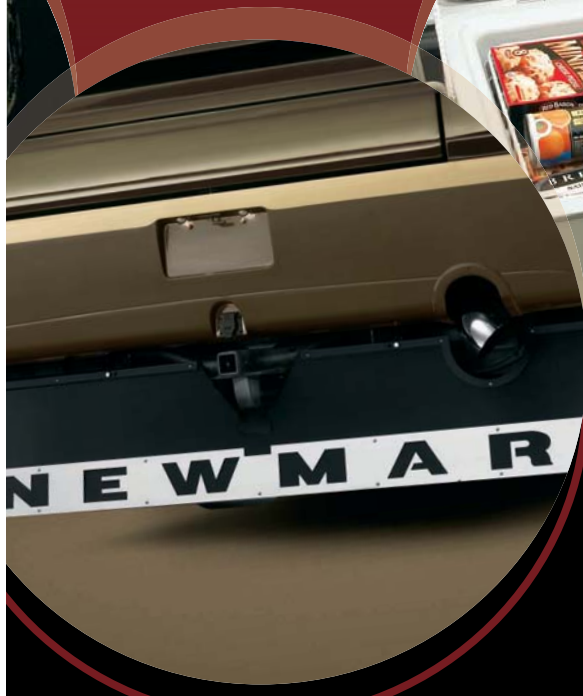


To accompany your exterior refrigerator, Essex has an optional exterior entertainment center with a Sony® 23" LCD television mounted on a swing-arm along with a radio, CD player and two speakers.



Adjacent to the lighted handle at Essex's entrance door lies one of the coach's many security features. This backlit keyless entry pad allows you to protect Essex with your own unique entry code.





Essex's rear cap is finished with a top-mounted, remote-controlled camera for the rearview color monitor system. The stainless steel Newmar name cutout on the rear tow guard completes the visual package.



Essex's basement doors slide smoothly to unveil a handy exterior refrigerator/freezer for your late afternoon leisure or game-time grilling. Keep items on ice or just keep them cool—you choose the appropriate setting.



Smooth-operating, swing-out doors open away from one another for easy access to Essex's sizeable storage compartments. The lighted, pass-through compartments are controlled by an interior switch and equipped with sliding trays.



For your indoor viewing pleasure, Essex is outfitted with a standard Sony® 32" LCD television. Seize the remote, sit back in your comfortable coach and select the program of your choice.









## LEAVE A WAKE OF AWE AND ENVY.

Wind-swept, sun-drenched or moonlit, Essex is heart stirring. With this standout coach, you're sure to garner attention as you journey to spectacular views and enjoy years of travel pleasure.

### PUT YOURSELF IN THE IMPRESSIVE DRIVER'S SEAT.

The roomy, refined interior of Essex is complemented by an intelligently crafted driver's command center designed to make driving both simple and safe. Clear gauges and controls, plus a smartly integrated dash help create a luxurious, yet brilliantly uncomplicated ambience for wherever the road may take you.

Essex's comfortable cab seating is made of plush ultraleather upholstery and features eight-way lumbar support, power recline and much-appreciated heat. For passengers, Essex enhances every ride with a superior oversized seat, power footrest and perfectly placed map light. Not to mention, their own passenger-side climate control.

Driving Essex should feel effortless. The coach has memory settings for the driver's seat, steering wheel, pedals and exterior mirrors. And, with the optional Pioneer® navigation system, you can set your mind at ease: you'll never have to stop for directions.



UNIQUELY ESSEX. UNIQUELY HIS.



# HER ESSEX







FULFILL YOUR DESIRE  
FOR OPULENCE  
AND ELEGANCE.

Essex understands a woman's perspective. You have an appreciation for simple elegance and the comforts of luxury living. You want a home that affords you room to relax in and ample space to host your next dinner party. And, you don't mind the attention as others gush over your gorgeous new coach.





Residential in feel and regal in appearance, the 2006 Essex is captivating, sophisticated and intelligent. Essex offers the intricate styling and top-of-the-line offerings you'd expect from a luxury motor coach, such as plush Villa® furniture, optional, handcrafted Ginger Glazed Cherry hardwood cabinets and an optional electric fireplace. And, Essex comes complete with all of *his* required amenities.

Shouldn't the life you live extend to your exquisite motor coach? With the 2006 Essex, it can.



# Experience





S T U N N I N G









PAUSE FOR  
THAT FIRST  
EXHILARATING MOMENT.

Essex stirs the soul, offering the amenities of a custom-built home and the conveniences of grand motor coach living—all in spacious, luxurious surroundings with up to four Newmar-pioneered slideouts. You'll feel your breath being taken away upon your first step into Essex, confident that this coach was built for you.

ENJOY EPICUREAN DELIGHTS IN  
THE LAP OF LUXURY.

Essex's gourmet kitchen invites you to indulge your senses. With inherent design intuition, ample smart storage and splendid appliances, Essex's kitchen has a way of making every meal infinitely better.

The heart of Essex is framed by elegant, handcrafted hardwood cabinets with raised-panel, double-cathedral doors. Fine hardwood choices include the Ginger Glazed Cherry shown at left, Camden Cherry, Natural Cherry, Northern Maple or Pearl Glazed Maple.



Essex comes standard with a versatile 30" GE® convection microwave oven and two-burner, recessed cooktop. Polished, easy-to-clean Corian® countertops allow plenty of space for prep work and your favorite kitchen tools.



Essex's kitchen has pullout pantry shelves and abundant drawers with dovetailed sides, maple bottoms and metal guides. Optional upgrades are also available, such as this in-drawer dishwasher that blends beautifully with Essex's surrounding cabinetry.



Be swept into a remarkable life of indulgences with Essex, including this optional, cozy, electric fireplace. Turn the fire on or off by simple remote control and enjoy hours of warmth and ambiance.



Essex is a fusion of stylish elements and functional space. These attractive doors provide privacy between the bedroom and bathroom. The frosted glass filters soft light and the ornate hardwood matches detailing throughout the coach.





Note Essex's generous bedroom storage. The deep, cedar-lined wardrobe accommodates your casual and formal clothing and includes a carpeted floor and convenient storage for your handbags and shoes.



Whether you prefer to call it the powder room, restroom or bathroom, you'll be pleased with Essex's: two sinks featuring deluxe faucets, Corian® countertops with no-drip edges, polished porcelain tile floor and a lovely fabric vanity seat.



Essex's bedroom vanity holds a Bose® wave radio for soothing sounds and space for your own touches. The exclusive 30" Phillips® television doubles as a vanity mirror and may also be used as a computer monitor.



Enjoy a soothing, pampering shower in your new coach. Essex's shower is housed by a decorative glass door and optional Corian® shower walls. Standard towel bars, removable showerhead and a robe hook make the bathroom area complete.



**E**LEVATE LIVING  
TO A POETIC LEVEL.

Essex provides the perfect space to lose yourself in a novel or be swept to sleep like a queen. With a rich interior, deep, cedar-lined wardrobe and the optional king-sized, four-poster bed, Essex's bedroom could easily become your favorite retreat.

The alluring bedroom offers impeccable decor, including a beautiful deluxe bedspread with matching pillow shams, accent pillows and a faux fur throw that you'll want to wrap yourself in. Relax, restore, refresh and renew in Essex's standard king-sized bed with a raised-panel hardwood base, and enjoy an uninterrupted night's sleep on the King Koil™ turn-free mattress. Essex's underbed storage is large enough to stow dinette chairs, and houses a large safe for storing your documents and precious possessions. Overhead cabinets above the headboard offer plentiful space to store personal effects or additional bedding.

This haven and all of Essex's splendor is awaiting you.









UNIQUELY ESSEX. UNIQUELY HERS.