

2006

Select

LUXURY DEFINED



By Travel Supreme

Luxury Defined...



**...with a *SELECT* Sense
of Style the Moment you
Step Inside.**

*Sugar & Spice decor and Brown Sugar glazed maple
hardwood cabinets with Renaissance package*

Luxury Defined...



You'll sleep in style in the lavish environment of the bedroom suite. The comfy king-size bed is sure to get you ready to tackle another day.



If you are getting ready for a night on the town, the sit-down vanity surrounds you in beautiful hardwood cabinetry and features a flat screen TV and cedar-lined wardrobe.



With the Travel Supreme Select Series, your journey is limited only by your imagination. Pictured here is the optional 26" LCD widescreen TV. The Select Series of diesel pushers are designed and engineered from top to bottom with comfort, luxury and performance in mind. Select is truly magnificent beyond all expectation.

Space and privacy define this elegant bathroom that features a deluxe marble shower, granite counter tops, a graceful marble floor and handcrafted hardwood cabinetry. The marble shower featured in this picture is optional.



Comfort, convenience and safety are paramount in the roomy cockpit featuring cherry wood accented dash, Flexsteel leather seats with eight way power lumbar support, Pioneer navigation system and color rear-view monitor. Also featured here are the VIP Smart Steering Wheel with touch pad, tilt & telescope.

...Bound Only by your Imagination.

Luxury Defined...



*Conquer Any Road or Mountain With The Powerful Cummins 500 HP
Engine at Your Command!*

...Passionate...Powerful...Personal.

Luxury Defined...



If your tastes lean toward lighter wood, choose coffee latte glazed maple. This Select bathroom features double sinks, a large mirror with indirect lighting, a spacious corner shower stall, generous storage and heated, granite floor with 4" pewter inserts. (Shown with optional black laboratory and granite floors and shower walls).



Our bedroom storage slideout wall has drawers and overhead cabinets galore! It also features a 27" flat screen TV and a vanity area that provides natural daylight for applying makeup, crafting or sewing. (Photo shown with optional 23" LCD TV)



Ebony with coffee latte glazed maple hardwood with sable accents



Functional, spacious and luxurious living areas feature a lighted ceiling mirror, heated granite kitchen floor, 40" LCD HDTV with home theater sound, toe kick courtesy lights, indirect ceiling lights above cabinets and slideouts and an Ultra leather (optional) sofa.

Slideout beds dramatically enhance bedroom space. Standard amenities include a decorator coordinated bedspread, bedskirt, pillow shams and window treatments as well as individual reading lights, night stands and handsome solid wood trim.

...The Ultimate Home On the Road.

Luxury Defined...

One look inside and it's easy to tell why the Select Series is the only choice in first-class travel. Exquisite interiors feature all the comforts you'd expect in your dream home on the road. You might not want to leave your splendid Select motorhome. Everything has been tastefully designed for even the most meticulous tastes from ceiling lighting to marble and carpet flooring and everything in between. It's spacious enough to entertain a crowd and small enough for a dinner and movie for two.



Carmel Glazed maple hardwood

...All Dressed Up and Everywhere to Go.



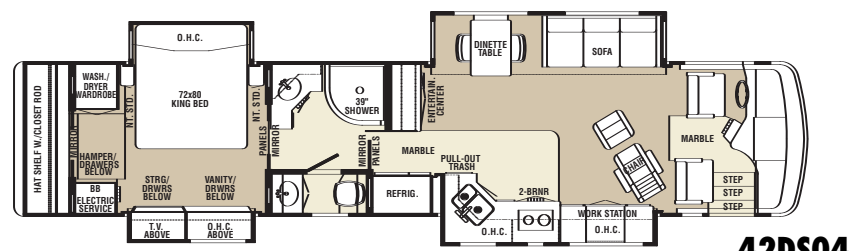
Travel the world in style with all the amenities you expect in a first-class motorhome. From the wrap-around cockpit featuring the highest technology for taking on the road to the overhead console with 24" flat screen TV, we've simply left nothing out.



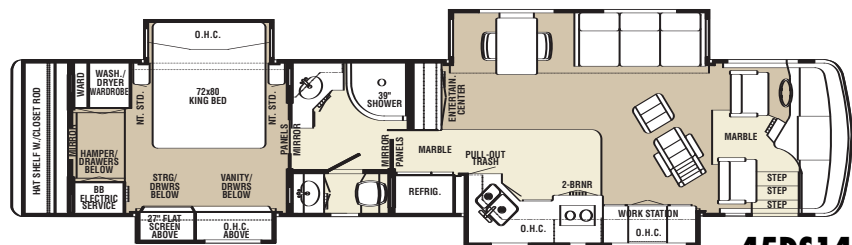
Carmel Glazed maple hardwood cabinets

Your kitchen is the envy of all others with deluxe elements including a huge side-by-side refrigerator with ice maker, a two burner cooktop, GE Profile convection microwave, granite counter tops and hardwood cabinetry with plenty of storage.

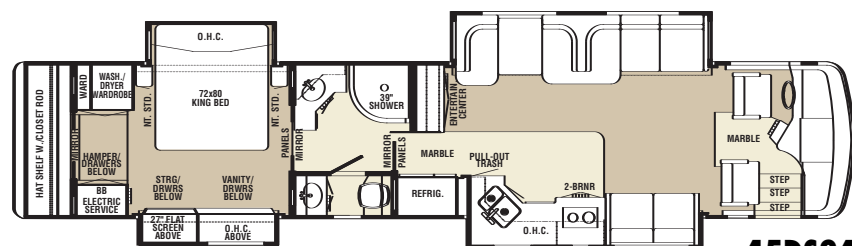
2006 FLOOR PLANS



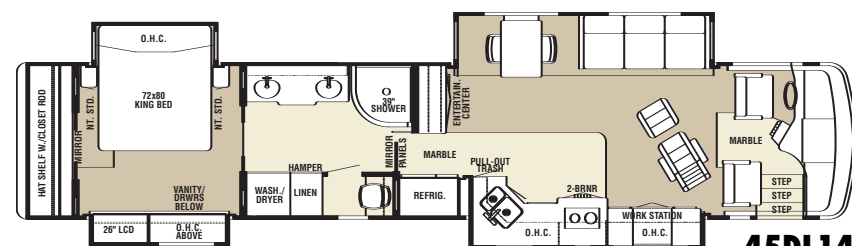
42DS04



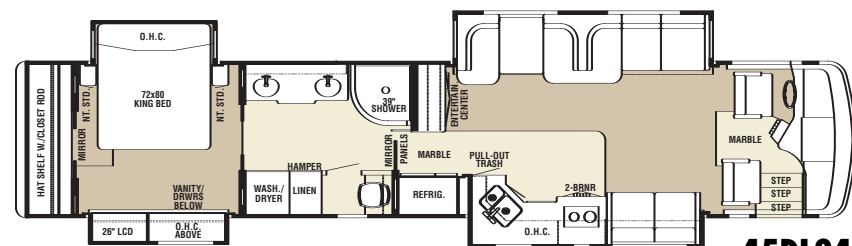
45DS14



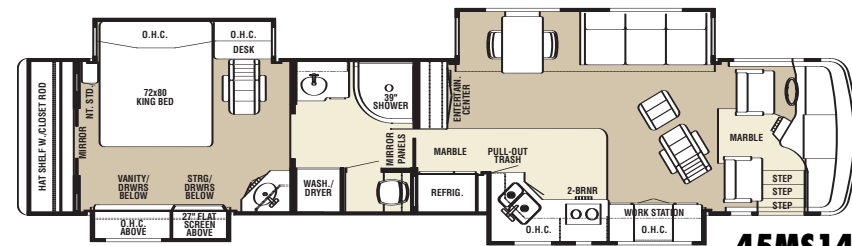
45DS24



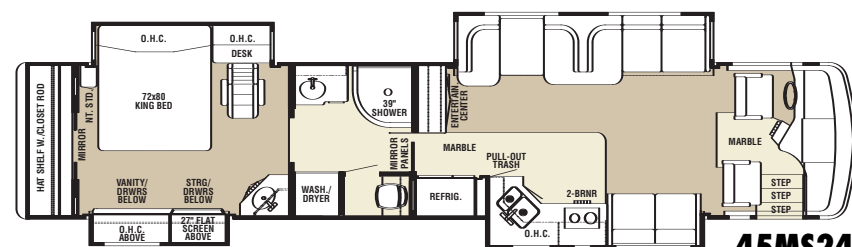
45DL14



45DL24



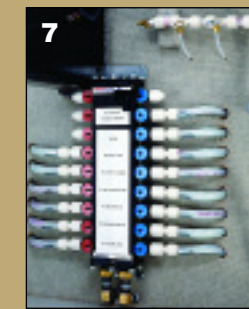
45MS14



45MS24

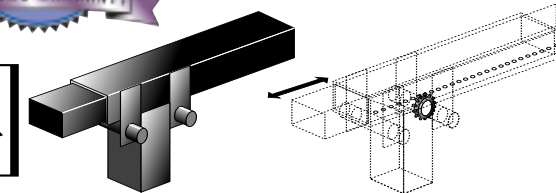
2006 Select Features

1. Multiplex lighting
2. Planning a tailgate party for the big game? Catch all the action on the optional exterior entertainment center, featuring a 24" flat screen TV.
3. If you're planning a barbecue at your next travel destination, pack the burgers and ribs into the optional spacious Norcold® slide out freezer.
4. Provide the musical entertainment for any occasion with the external stereo/CD player, whether you're hosting a cookout with friends you met while traveling, or waltzing in the moonlight with your favorite traveling companion.
5. Loading and unloading your luggage, traveling gear and other equipment is made easier with the side-hinge, swing-out baggage doors on the storage bays.
6. The exterior wash and service station features an auto rewind water hose for quick, easy cleanups.
7. The Manabloc Water System effortlessly controls, monitors and directs your Select's water flow.



All Cummins Engines come with a 5 year 100,000 mile warranty.

CUMMINS® ISM-500 hp Turbo Diesel Engine w/1550 ft/lbs. of Torque



LIMITED LIFETIME WARRANTY ON EVER-GLIDE SYSTEM

The limited lifetime warranty on the Ever-Glide system provides a guarantee against all defects in materials or faulty workmanship for the steel Ever-Glide system (steel slideout supports) for as long as the original owner owns the unit. This warranty does not include the 12 volt power head and switches on the Ever-Glide system.



All models are built on dependable Spartan chassis, one of the finest available.

SPARTAN ONE STOP CUSTOMER CARE PROGRAM "Roadside Assistance Program"

- 24hr. 7 day-a-week phone assistance
- Towing assistance/coverage
- Flat tire assistance/coverage
- Fuel delivery
- Lock-out protection

2006 FEATURES & OPTIONS

Standard Features

Chassis & Automotive Features

Spartan K2 Tag Axle Chassis (44,600 LB. GVWR)
 500 HP-ISM Cummins 1,550 Ft/Lbs. Torque
 Allison 4000 MH Transmission
 14,600LB Independent Front Suspension (IFS)
 295/80R22.5 Michelin Tires
 Jake Engine Brake - 2 Stage
 200 Amp Alternator
 150 Gal. Fuel Tank
 Aluminum Wheels
 15,000 Lb. Hitch
 4 point Auto Hydraulic Levelers
 Chrome Mirrors Heated w/Remote Control
 LED Lighting Package-100,000 Hour Guaranteed
 Function Clearance Lights and Tail Lights.
 Driving Lamps
 Side & Rear Docking Lights
 Mudflaps w/Stainless Steel Logo
 55 Degree Wheel Cramp, Max Steering
 Smart Air management system

Electrical, Heating, A/C & Exterior Features

Three (3) 15,000 BTU Penguin A/C w/Heat Pump
 Hydro-Hot Heating System
 Manabloc Water System
 50 Amp Power Service
 Onan 12.5 KW Quiet Diesel w/Power Slide-out
 Two (2) 2000 Watt Invertors w/ eight 6 volt batteries
 Power Control TV Antenna
 In-Motion Sat. Dish (Trac-King HD Ready)
 One Piece Molded Fiberglass Roof
 Dual Air Horns
 Roof Spot Light w/Remote Control
 Rear Ladder
 Dual Pane Windows
 Power Rewind Water Hose (12 Volt)
 50 Amp Power Cord Rewind (12 volt)
 Girard Power Slide Awning
 Window Awnings
 Power Front Door Awning
 Slide-Out Room Topper Awnings
 Slide-Out Cargo Trays
 Side Hinge Baggage Doors
 Power Baggage Door Locks

Keyless Entry System w/ Remote
 Exterior Stereo CD Player
 Full-Body Paint w/ Clear Coat
 3M Film Front Mask

Appliances, Accesories & Interior Appointments

G.E. Profile Side-By-Side w/Ice Maker (22.6 Cu. Ft.)
 Compact Washer & Dryer (1 Piece Vented)
 Water Purifier w/ Faucet
 2-Burner Electric Cook Top
 Advantium Stainless Steel Convection Microwave
 Padded Vinyl Ceiling
 7' Ceiling Height
 Heated Floors-Kitchen and Bath Tile Area
 Granite Counter Tops
 Flexsteel Leather w/Eight Way Power Lumbar
 Driver & Passenger Buddy Seat
 Power Front Privacy Curtain
 Marble Floor w/4" Pewter Insets In
 (Kitchen, Bath, and Foyer High or Low Polish)
 Marble Kitchen Backsplash w/ Pewter Insets
 Glazed Maple Hardwood Cabinets in Your Choice of
 Three Finishes Carmel Glazed, Brown Sugar Glazed, and
 Coffee Latte Glazed
 Flexsteel Leather Euro Chair w/ Ottoman
 Side-Visors Maxi-Carefree
 Power Front Visors-Carefree
 Halogen Ceiling Lights Throughout
 Ceiling Mirror Feature (Living Room & Kitchen)
 Flexible Halogen Reading Light (Passenger)
 27" JVC Flat Screen Rear TV
 40" LCD High Definition TV/Home Theatre Surround
 Sound
 24" JVC Flat Screen Front O.H. TV w/VCR & DVD
 Pioneer Navigation w/DVD Rom
 10-Disk CD Changer
 Color Back-Up Camera Monitor
 King Bed 72" x 80"
 Bedspread & Bedskirt w/Pillow Shams
 Day/Night Shades
 Black Out Shades in Bedroom
 Lighted Entrance Steps
 Courtesy Lights at Toe Kicks
 Cedar Lined Wardrobe
 24 Hour Roadside Assistance Program
 Aria Electric Push Button Stool (Not offered in black)

Optional Features

Coffee Latte Glazed with Sable Accent package:

Hand Rubbed Black
 ● Entertainment Center
 ● Headboard with accent décor
 ● Accent trim on Slide-out fascia
 Black spiral drawer pulls and door knobs
 Kitchen and bath granite tops
 Granite backsplash with inlay
 Black Lavatory bowls
 Black Porcelain stool

Other Optional Features

Granite Floor Tile ILO Std
 Leather Sofa Distressed Leather ILO Std
 Leather Sofa ILO Std
 Leather Sofa ILO Work Station & Chair
 Fisher/Paykel Dishwasher
 Trip-Tek Info Center
 Exterior Freezer w/Slide Out Tray
 Exterior Entertainment Center
 Tire Sentry System
 Surge Suppressor (Electric System)
 JVC LCD 26" Wide Screen ILO Std 24" Flat TV (Front)
 (2) 60 Watt Solar Panels
 Multiplex Lighting
 XM Radio Tuner/Antenna
 Central Vac System
 Total Vision Rear Camera with Side Camera
 Electric Fireplace
 Dinette Wall Cabinet w/SO Granite Table
 Xenon Low Beam Headlamp
 Renaissance Pkg Bronze or Stainless Steel Faucets &
 Lighting
 Marble or Granite shower ILO Std
 Marble or Granite Livingroom Floor
 (2) Sine Wave Invertor -2800 watt
 Electric Heated Seats (Driver and Passenger)
 Safe
 Wastemaster Sewer Connection
 2-Piece Washer and Dryer
 23" LCD surround Sound in Rear Bedroom

2006 SPECIFICATIONS

CHASSIS & ENGINE SPECIFICATIONS

| MODELS | SPARTAN CHASSIS | CUMMINS ENGINE HP | ALLISON TRANSMISSION | AXLE RATIO | FUEL GALLONS | WHEEL BASE | FRONT GAWR | REAR GAWR | TAG GVWR | GVWR | GCWR |
|--------|-----------------|-------------------|----------------------|------------|--------------|------------|------------|-----------|----------|--------|--------|
| 42DS04 | K2 | 500 | MH 4000 | 4:33 | 150 | 296 | 14,600 | 20,000 | 10,000 | 44,600 | 59,600 |
| 45DS14 | K2 | 500 | MH 4000 | 4:33 | 150 | 320 | 14,600 | 20,000 | 10,000 | 44,600 | 59,600 |
| 45DS24 | K2 | 500 | MH 4000 | 4:33 | 150 | 320 | 14,600 | 20,000 | 10,000 | 44,600 | 59,600 |
| 45DL14 | K2 | 500 | MH 4000 | 4:33 | 150 | 320 | 14,600 | 20,000 | 10,000 | 44,600 | 59,600 |
| 45DL24 | K2 | 500 | MH 4000 | 4:33 | 150 | 320 | 14,600 | 20,000 | 10,000 | 44,600 | 59,600 |
| 45MS14 | K2 | 500 | MH 4000 | 4:33 | 150 | 320 | 14,600 | 20,000 | 10,000 | 44,600 | 59,600 |
| 45MS24 | K2 | 500 | MH 4000 | 4:33 | 150 | 320 | 14,600 | 20,000 | 10,000 | 44,600 | 59,600 |

SIZES & CAPACITIES

| MODELS | LENGTH | WIDTH | HEIGHT | INTERIOR WIDTH | INTERIOR HEIGHT | WATER TANK GAL. | WATER HEATER GAL. | SEWAGE TANK GAL. | GREY WATER GAL. | LP TANK GAL. |
|--------|--------|-------|--------|----------------|-----------------|-----------------|-------------------|------------------|-----------------|--------------|
| 42DS04 | 42'11" | 101" | 13'1" | 96" | 7'0" | 100 | NA | 60 | 60 | NA |
| 45DS14 | 44'11" | 101" | 13'1" | 96" | 7'0" | 100 | NA | 60 | 60 | NA |
| 45DS24 | 44'11" | 101" | 13'1" | 96" | 7'0" | 100 | NA | 60 | 60 | NA |
| 45DL14 | 44'11" | 101" | 13'1" | 96" | 7'0" | 100 | NA | 60 | 60 | NA |
| 45DL24 | 44'11" | 101" | 13'1" | 96" | 7'0" | 100 | NA | 60 | 60 | NA |
| 45MS14 | 44'11" | 101" | 13'1" | 96" | 7'0" | 100 | NA | 60 | 60 | NA |
| 45MS24 | 44'11" | 101" | 13'1" | 96" | 7'0" | 100 | NA | 60 | 60 | NA |

2006 PAINT OPTIONS



Cappuccino Frost



Riviera Gold



Arctic Grey



Black Pearl



Sahara Sand





LIMITED TWO (2) YEAR WARRANTY

Travel Supreme offers a limited warranty on all our recreational vehicles for 24 months from date of purchase against defects in materials or faulty workmanship. It applies to the original owner only and is available upon request for inspection. Individual manufacturer warranties apply to various other components we use.

FIVE (5) YEAR STRUCTURAL WARRANTY

The limited 5 year structural warranty provides a guarantee against all defects in materials or faulty workmanship for the Aluminum/Steel super-structure for 60 months from date of purchase. It applies to the original owner and is available upon request for inspection.

CUMMINS ENGINE 5 YEAR WARRANTY

All Cummins engines are warranted for 5 years or 100,000 miles.

SPARTAN CHASSIS 3 YEAR WARRANTY

All Spartan chassis are warranted for 3 years or 50,000 miles.

Travel Supreme reserves the right to make changes in products, components, materials, and prices at any time without obligation. Some photos are shown with optional equipment. Please see Standards and Options list for complete details

Your Nearest Dealer:



Travel Supreme, Inc., P.O. Box 610, 66149 State Road 19, Wakarusa, IN 46573
574-862-4484 FAX 574-862-2065 www.travelsupreme.com