

The Class A Coach That's a Step Ahead.

2006 WINNEBAGO VOYAGE™



## THE NEW AND IMPROVED 2006 VOYAGE.

*The 2006 Voyage comes with some remarkable upgrades, including triple-slide floorplans in the 35A and 38J, and TrueAir® on most models.*



38J - Aquarius with Sierra Maple

### ENJOY THE LUXURIES OF HOME ON THE ROAD.

Step into the 2006 Voyage and you'll be surrounded by upscale amenities typically found in luxurious homes, such as the 24" Sony® flat-face TV (27" on the 38J). As you head toward the galley, you'll notice our solid-surface countertops and beautiful cabinetry, featuring a catalyzed finish for added durability.

As you walk through the Voyage, you'll notice how our SmartSpace™ design philosophy makes the most of interior living areas by maximizing functionality and focusing on user-friendly features.

With a variety of double- or triple-slideout floorplans, wood options and fabric combinations to choose from, you're sure to find a Voyage that you will enjoy for years to come.

On the cover: 38J with Titanium Metallic graphics.

The galley is a perfect place to prepare a meal after a full day of RVing. It features your choice of a Sharp® microwave or an available microwave/convection oven, and also includes a Magic Chef® three-burner range top with storage below and a large, double-door refrigerator/freezer with an available icemaker. A four-door refrigerator with icemaker is also available on most models.

Another benefit is plenty of storage, including a spacious pantry and/or pantries with adjustable shelves, depending on the floorplan you choose. And, so you can easily access your stored items, there are full-extension drawer slides on all drawers.

Avoid the hassle of the Laundromat when you choose the available built-in combination washer-dryer (not available on the 31W and 33V).



33V

ENJOY YOUR ENTERTAINMENT COMFORTABLY.

The Voyage is the perfect combination of high-tech innovation and craftsmanship.



33V - Aspen Mist with Washed Maple

#### NEVER A DULL MOMENT.

In addition to the available bedroom TV, the front entertainment center features a 24" flat-face Sony TV located above the driver and passenger seats for easy viewing. The 38J comes with a front entertainment center featuring a 27" TV for more entertainment options. The Video Selection System, standard on every Voyage, allows you to view each TV independently, so you can watch a movie on cable while another TV plays a movie on DVD or VCR.

For even more enjoyment, furnish your Voyage with the Home Theater Sound System by Sony, which has a receiver, amplifier, DVD/VCR combo, five recessed speakers and a subwoofer. Plus, you don't need to be connected to a shore line or generator to enjoy your electronics because you can choose the 600-watt inverter that provides 110 volts of power. Sit back and relax in the Stitchcraft hoop-base lounge chair that swivels, glides, and can be positioned to your favorite spot when you're not traveling.



38J - Aquarius with Sierra Maple

#### RELAX IN COMFORT.

The bedroom is truly spacious, thanks to the rear slideroom and walk-around queen-sized bed. The large wardrobe and underbed compartment provide plenty of room for storage. Plus, you can enjoy your favorite movie or TV show with the available 20" flat-face TV. For added convenience, a remote sensor allows you to control the front DVD/VCR components from the comforts of the bedroom.

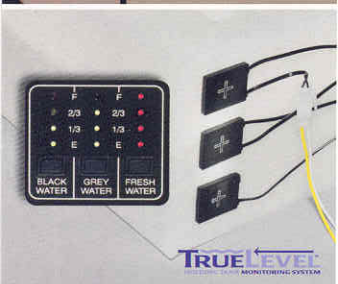
Relaxation comes effortlessly with the Rest Easy® multi-position lounge (not available on the 31W), which converts from a sofa to a recliner with a pullout ottoman or to a roomy 75" by 60" bed, all at the touch of a button.

Outside the bedroom you can sit down, relax and enjoy the feel of the innerspring seat construction on the BenchMark™ full comfort dinette (not available on the 38J). Or, simply flip up the seats for large, easy-access storage areas. BenchMark also quickly converts into a comfortable bed.

For safe and comfortable travel, every Voyage is equipped with additional seat belts, providing more seating options. There's even a child-seat tether in the forward-facing dinette seat.

EXPERIENCE INNOVATION. EXPERIENCE THE VOYAGE.

The Voyage is filled with features that will make your travels more enjoyable.



#### EASY-TO-USE TECHNOLOGY.

The OnePlace® systems center allows you to check frequently used switches, gauges and controls such as tank levels, LP gas and battery power.

**TrueAir:** It is 40 percent more efficient and 10 percent quieter than roof air. TrueAir uses residential filters and features a heat pump, so you can stay warm during chilly mornings without turning on the furnace. (Not available on the 33V and 31W.)

**PowerLine®:** This energy management system monitors onboard electrical usage and controls postponable appliances to minimize the nuisance of tripped campground circuit breakers, preventing unwanted interruptions of electrical service.

Enjoy the available exterior entertainment center, which includes AM/FM stereo, CD player with remote, 12-volt DC receptacle, TV jack, 110-volt outlet and speakers.

**TrueLevel™:** Our innovative holding tank monitoring system incorporates Mirus\* detector cells that detect liquid levels from outside the tank for accurate readings time after time.

The available two-way radios have up to a five-mile range and can recharge from the coach's house batteries at their built-in charging station.

\*Mirus is a trademark of Material Sciences Corporation.



#### YOU'RE IN THE DRIVER'S SEAT.

The dash features an available rearview monitor for ease of backing and maneuvering. For added peace of mind, upgrade with side-mounted cameras. They activate with the turn signals to provide side views in the dash-mounted rearview monitor.

Winnebago Industries engineers designed a radio specifically for motor home applications. The RV Radio® is Sirius® satellite ready and includes AM/FM stereo; CD player; weather band; and large, easy-to-use buttons and knobs. Upgrade your RV Radio with the available Sirius Satellite Radio package and receive 120 channels of crystal clear programming, as well as a free six-month subscription (not available in Canada).

The exclusive StoreMore® slideout system, featured on every Voyage, allows you to easily access your belongings without having to crawl under the slideout. The exterior service center features large, easy to read, color coded labels. The QuickPort® service connection hatch lets you close your compartment doors when connected to hookups at the campground.

EVERY DETAIL IS ACCOUNTED FOR.

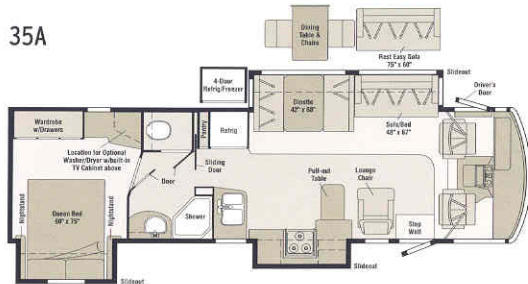
We put as much work into the inside of the Voyage as we do the outside.

INTERIORS

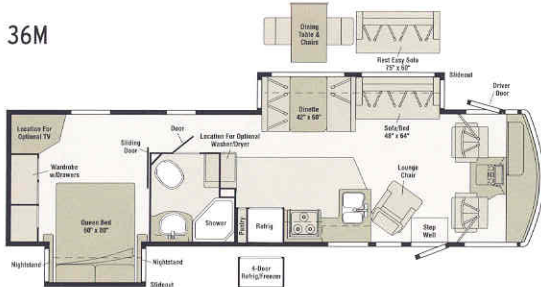
31W



35A

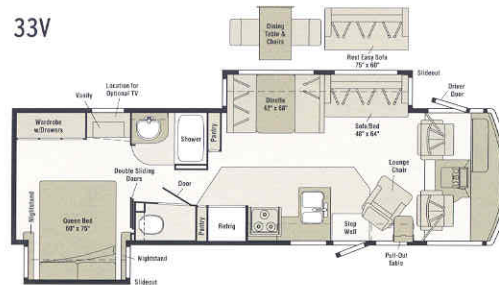


36M

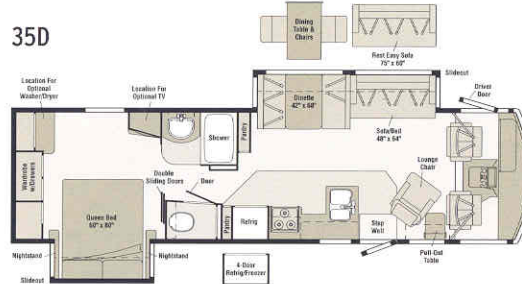


Note: Dimensions shown are for sleeping space only and may vary due to styling differences.

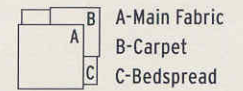
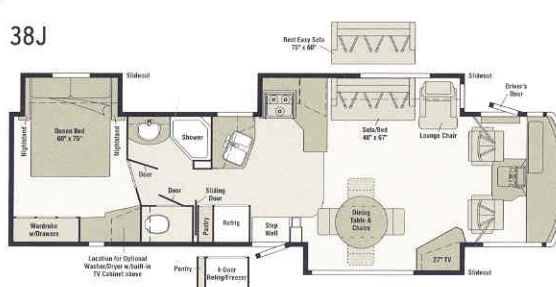
33V



35D



38J



Aspen Mist



Oakwood



Concert Cherry



Portsmouth Oak



Sierra Maple



Washed Maple



DESIGNED LIVING.

We believe the same high standards we apply to construction should apply to interior design. That's why we create efficient floorplans based on customer input, why we look for durable fabrics in pleasing colors, and why we handcraft our own cabinets using traditional panel and rail construction.



Light Autumnwood Metallic



Titanium Metallic



# 2006 VOYAGE SPECIFICATIONS

	31W	33V	35A	35D	36M	38J
<b>Length</b>	31'6"	33'8"	35'9"	35'6"	36'5"	38'10"
<b>Exterior Height</b> <sup>a,f</sup>	12'3"■ / 12'2"□	12'1"■ / 12'2"□	12'2"○ / 12'2"●	12'2"■ / 12'1"□	12'1"■ / 12'1"□ / 12'1"○	12'3"●
<b>Exterior Width</b> <sup>b</sup>	8'6"	8'6"	8'6"	8'6"	8'6"	8'6"
<b>Exterior Storage</b> <sup>c,f</sup> (cu. ft.)	74.9	82.0	90.4	90.4	120.6	118.1
<b>Interior Height</b>	6'8"	6'8"	6'8"	6'8"	6'8"	6'8"
<b>Interior Width</b>	8'5"	8'5"	8'5"	8'5"	8'5"	8'5"
<b>Freshwater Capacity w/Heater</b> <sup>d</sup> (gal.)	77	82	84	82	74	84
<b>Holding Tank Capacity - Black/Gray</b> <sup>d</sup> (gal.)	45 / 49	55 / 43	50 / 75	55 / 43	41 / 61	51 / 53
<b>LP Capacity</b> <sup>e</sup> (gal.)	23	28	28	28	28	28
<b>Fuel Capacity</b> (gal.)	75	75	75	75	75	75
<b>GCWR</b> <sup>g</sup> (lbs.)	26,000■ / 26,000□	26,000■ / 26,000□	26,000○ / 30,000●	26,000■ / 26,000□	26,000■ / 26,000□ / 26,000○	30,000●
<b>GVWR</b> (lbs.)	20,500■ / 20,700□	20,500■ / 20,700□	22,000○ / 24,000●	20,500■ / 20,700□	20,500■ / 20,700□ / 22,000○	24,000●
<b>GAWR - Front</b> (lbs.)	7,000■ / 7,500□	7,000■ / 7,500□	8,500○ / 9,000●	7,000■ / 7,500□	7,000■ / 7,500□ / 8,500○	9,000●
<b>GAWR - Rear</b> (lbs.)	13,500■ / 13,500□	13,500■ / 13,500□	15,000○ / 15,500●	13,500■ / 13,500□	13,500■ / 13,500□ / 15,000○	15,500●
<b>Wheelbase</b>	190"	208"	228"	220"	228"	248"

■ = Chassis A □ = Chassis B ● = Chassis C ○ = Chassis D

## Standard - S Optional - O

31W 33V 35A 35D 36M 38J

### AUTOMOTIVE/CHASSIS

	31W	33V	35A	35D	36M	38J
<b>Chassis A</b> - Ford 6.8L SOHC Triton® V10 362-hp, 5-speed overdrive transmission, 4-wheel ABS, 130-amp. alternator, <b>Tires</b> 19.5"	S	S		S	S	
<b>Chassis B</b> - Workhorse 8.1L Vortec V8 340-hp, Allison® LCT 1000 overdrive transmission, 4-wheel ABS, 145-amp. alternator, <b>Tires</b> 19.5"	O	O		O	O	
<b>Chassis C</b> - Workhorse 8.1L Vortec V8 340-hp, Allison 2100 MH overdrive transmission, 4-wheel ABS, 145-amp. alternator, <b>Tires</b> 22.5"			O			S
<b>Chassis D</b> - Workhorse 8.1L Vortec V8 340-hp, Allison LCT 1000 overdrive transmission, 4-wheel ABS, 145-amp. alternator, <b>Tires</b> 22.5"			S		O	
<b>Tire Tools</b> wrench, leverage bar, <b>Trailer Hitch</b> <sup>9</sup> 5,000-lb. drawbar/500 lbs. maximum vertical tongue weight, fixed mount female socket, 7-pin connector, <b>Wheel Liners</b> stainless steel	S	S	S	S	S	S
<b>Leveling Jacks</b> (front & rear) Kwikkee® hydraulic, manual touch pad, indicator light	S	S	S	S	S	
<b>Leveling Jacks</b> (front & rear) HWH® hydraulic, manual touch pad, chime						S
<b>Leveling Jacks</b> (front & rear) Kwikkee hydraulic, automatic	O	O	O	O	O	
<b>Leveling Jacks</b> (front & rear) HWH hydraulic, automatic						O

### CAB AREA & DRIVER CONVENIENCES

	31W	33V	35A	35D	36M	38J
<b>Cab Seats</b> lumbar support, armrests, multiadj. swivel/slide/recline, fabric, <b>Cigarette Lighter/12-volt DC Powerpoint, Convenience Tray, Cruise Control, Door</b> (driver) entry, assist bar, courtesy light, TriMark® KeyOne™ System, <b>Floor Mats</b> carpet, driver & passenger, <b>Map Lights (2)</b> individual driver & passenger, <b>Steering Wheel</b> tilt w/power assist, <b>Sunvisors (2), Trim Panels</b> driver & passenger sides (12-volt DC powerpoint passenger side), <b>Window</b> (driver) power, <b>Window</b> (passenger) full-slider w/screen, <b>Windshield Wipers</b> intermittent	S	S	S	S	S	S
<b>Cab Seat Pedestal</b> 6-way power assist (driver), <b>Cab Seats</b> leather insert w/vinyl surround, <b>Defroster Fans (2)</b> aux. 2-speed w/instrument panel switch, <b>GPS Navigation System, Monitor System</b> rearview, B/W w/single camera & one-way audio, Audiovox® <b>Video Camera System</b> side-mounted cameras (2), requires monitor system, <b>Workstation</b> in-dash, passenger	O	O	O	O	O	O

### ENTERTAINMENT

	31W	33V	35A	35D	36M	38J
<b>Radio Power Switch</b> main/aux. battery, <b>RV Radio</b> (cab) AM/FM/stereo CD player w/remote controls & weather band, roof-mounted flexible rubber antenna, speakers (4), <b>Sirius Satellite Ready, Telephone</b> input & interior jack, <b>TV Enhancement Package</b> antenna (amplified), 12-volt DC powerpoint, interior jack(s), coax wiring, cable input, antenna check reminder light, TV shelf, <b>Video Selection System</b>	S	S	S	S	S	S
<b>TV 24"</b> flat-face, color AC stereo w/remote, Sony®	S	S	S	S	S	S

### Entertainment Center w/TV 27" flat-face, color AC stereo w/remote, Sony

	31W	33V	35A	35D	36M	38J
<b>CB</b> installed, <b>Cobra® CB Prep</b> antenna, antenna lead, 12-volt DC powerpoint, <b>CD</b> compact multidisc changer, <b>DVD/VCR Stereo Combo</b> w/remote, Sony, <b>Entertainment Center</b> (exterior) DC receptacle, AC duplex receptacle, AM/FM radio w/CD player & remote, TV jack, radio antenna, speakers (2), lockable compartment, removable table, <b>Home Theater Sound System</b> amplifier, DVD/VCR combo, receiver, speakers (5), subwoofer, Sony (NA with DVD/VCR option), <b>Radios (4)</b> 2-way, docking port w/charger, <b>Satellite Dish Antenna</b> Winegard®, RV digital, elevation sensing unit, manual, <b>Satellite Dish Antenna</b> Winegard, RV digital, elevation sensing unit, power, <b>Satellite Radio</b> Sirius, includes 6-month pre-paid subscription, (NA in Canada), <b>TV 20"</b> color AC stereo w/remote, flat-face, remote extenders, bedroom, Sony	O	O	O	O	O	O

### INTERIOR

	31W	33V	35A	35D	36M	38J
<b>Ceiling</b> fabric, <b>Clock, Cupholder(s), Curtain</b> front wraparound w/track, <b>Light</b> decorative, <b>Lights</b> ceiling, incandescent w/wall switches, <b>Lights</b> fluorescent, recessed, galley, lounge w/wall switches, <b>Lights</b> reading, <b>Picture(s), Shades</b> day/night pleated (lounge, dinette, bedroom), mini blinds (galley), <b>Wainscoting</b> w/chair rail (33V, 35A, 35D)	S	S	S	S	S	S
<b>Mirror</b> w/frame		S		S		
<b>Windows</b> dual-glazed/thermo-insulated	O	O	O	O	O	O

### CABINETY

	31W	33V	35A	35D	36M	38J
<b>Portsmouth Oak or Concert Cherry or Washed Maple or Sierra Maple</b> stile-and-rail construction w/raised-panel inserts on upper doors	O	O	O	O	O	O

### COUNTERTOPS

	31W	33V	35A	35D	36M	38J
<b>Solid-Surface</b> galley	S	S	S	S	S	S

### FLOORCOVERING

	31W	33V	35A	35D	36M	38J
<b>Carpeting</b> w/pad, <b>Vinyl</b> bath, galley	S	S	S	S	S	S

### FURNITURE

	31W	33V	35A	35D	36M	38J
<b>BenchMark</b> full comfort dinette w/access to storage below, child-seat tether anchor	S	S	S	S	S	
<b>Dining Table</b> w/extendable pull-up leaf & chairs (2) & (2) folding		O	O	O	O	S
<b>Lounge Chair</b> hoop-base rocker/recliner, footrest & magazine rack, cabinet w/table	O	S		S		
<b>Lounge Chair</b> hoop-base rocker/recliner, footrest			S		S	S
<b>Rest Easy</b> multi-position lounge, power recliner, fold-down armrest w/beverage holder, throw pillows		O	O	O	O	O
<b>Sofa</b> w/throw pillows, access to storage below	S					
<b>Sofa</b> w/throw pillows, removable armrests (2), footrests (2)		S	S	S	S	S

# 2006 VOYAGE SPECIFICATIONS

Standard - S Optional - O 31W 33V 35A 35D 36M 38J

## GALLEY

<b>Faucet</b> single-control, <b>Microwave Oven</b> w/range fan, Sharp® <b>Range Top</b> 3-burner w/storage below, Magic Chef® <b>Range Cover</b> , <b>Refrigerator/Freezer</b> large double-door, <b>Receptacles</b> duplex, <b>Roof Vent</b> nonpowered, <b>Sink</b> double-bowl molded w/sink cover, <b>Wastepaper Basket</b> , <b>Water Purification System</b> cold water only	S	S	S	S	S	S
<b>Microwave/Convection Oven</b> w/range fan, Sharp, <b>Range</b> 3-burner w/oven, Magic Chef, <b>Refrigerator/Freezer</b> large double-door w/icemaker, <b>Roof Vent</b> powered ventilator fan	O	O	O	O	O	O
<b>Appliance Storage Cabinet</b>			S			
<b>Countertop</b> flip-up extension(s)		S	S	S	S	S
<b>Galley Rail</b>	S	S		S	S	
<b>Light</b> decorative dining light		S	S	S	S	S
<b>Magazine Rack</b>					S	S
<b>Pantries</b> (2) slideout		S		S		
<b>Pantries</b> (1) w/adj. shelves, (1) w/slideout	S					
<b>Pantry</b> slideout			S		S	S
<b>Refrigerator/Freezer</b> 4-door w/icemaker			O	O	O	O
<b>Storage Cabinet</b>			S		S	
<b>Table</b> pullout, adj. shelf			S			
<b>Wall Border</b>	S	S		S	S	S

## BATH

<b>Cabinet</b> lavatory, <b>Cabinet</b> medicine, <b>Faucet</b> (lavatory) dual-control, <b>Faucet</b> (shower) single-control w/Moen Posi-Temp® and fixed showerhead, <b>Light</b> shower, <b>Lights</b> makeup, <b>Roof Vent</b> powered, <b>Shower</b> w/wall surround, <b>Shower Door</b> textured glass, <b>Shower Skylight</b> , <b>Sink</b> oval, <b>Toilet</b> porcelain w/foot-pedal flush & sprayer, <b>Towel Rack</b> 3-rod, mounted to door	S	S	S	S	S	S
<b>Cabinet</b> linen, <b>Magazine Rack</b>	S					
<b>Clothes Rod</b> removable, located in shower	S	S		S		
<b>Faucet</b> (shower) handheld showerhead	O					
<b>Mirror</b>	S			S		
<b>Shower Package</b> handheld showerhead w/water shut-off valve and fold-down shower seat		O	O	O	O	O
<b>Storage Cabinet</b> private toilet room				S		
<b>Wall Border</b> private toilet area		S	S	S		S

## BEDROOM

<b>Bed</b> queen, innerspring Serta® mattress, bedlift gas springs w/underbed storage, <b>Bedspring</b> pillow shams, pillows, throw pillows, <b>Lights</b> decorative wall lamps, <b>Nightstand(s)</b> , <b>Wall Border</b> , <b>Wardrobe Cabinet</b> carpeted floor, clothes rod, drawers, light, mirrored/wood doors	S	S	S	S	S	S
<b>Headboard</b>	S	S		S	S	
<b>Mirror</b> wood-framed, backwall	S	S	S			S
<b>Roof Vent</b> non-powered	S					
<b>Vanity Cabinet/Desk</b> w/stool	S	S		S		

## EXTERIOR

<b>Awning</b> patio	O	O		O	O	
<b>Awning</b> patio, electric w/wind sensor & remote	O	O	S	O	O	S
<b>Awning</b> patio, sunscreen (requires electric awning package), <b>Undercoating</b> Workhorse	O	O	O	O	O	O

- a The height of each model is measured to the top of the tallest standard feature and is based on the curb weight of a typically equipped unit. The actual height of your vehicle may vary by several inches depending on chassis or equipment variations. Please contact your dealer for further information.  
 b Voyage floorplans feature a wide-body design — over 96" in making your purchase decision, you should be aware that some states restrict access on some or all state roads to 96" in body width. Before making your purchase decision, you should confirm the road usage laws in the states of interest to you.  
 c The load capacity of your motor home is designated by weight, not by volume, so you cannot necessarily use all available space when loading your motor home.  
 d Capacities are based on measurements prior to tank installation. Slight capacity variations can result due to installation applications.  
 e Capacities shown are tank manufacturer's listed water capacity (W.C.). Actual filled LP capacity is 80% of listing due to overfilling prevention device on tank.  
 f Measurements are based on the most recent information available. See your dealer for specifications.

31W 33V 35A 35D 36M 38J

<b>Awning Rails</b> w/rain gutters, <b>Entrance Door</b> w/separate screen door, deadbolt lock, electric steps w/doorjamb switch, <b>Graphics Packages</b> Light Autumnwood Metallic or Titanium Metallic (w/protective film below door), <b>Ladder</b> , <b>Light</b> porch, <b>Light</b> service, driver side, <b>Mirrors</b> electric remote w/defrost, <b>Mudflaps</b> rear (2), front (2), <b>Receptacle</b> AC duplex, <b>Sidewall Skin</b> one-piece, smooth fiberglass, <b>Storage Compartments</b> valance panels, trunk liner, gas cylinders, TriMark KeyOne System, paddle latch, lights	S	S	S	S	S	S
---	---	---	---	---	---	---

## SYSTEMS

<b>Automotive Heater/AC</b> , <b>Aux. Start Circuit</b> , <b>Batteries (2)</b> (coach) deep-cycle, w/disconnect system, <b>Battery Charge Control</b> automatic dual, <b>Drain 1"</b> water tank, <b>Electrical Distribution System</b> AC & DC breaker panels, 45-amp. converter/charger (55-amp. 38J), <b>Generator Prep</b> gas line, 12-volt DC wiring, <b>Generator/Shoreline Automatic Changeover Switch</b> , <b>Monitor Panel</b> wall-mounted, battery condition gauge, generator hourmeter gauge, generator start/stop switch, holding tank levels, LP tank level, water heater switch & lights, water pump switch, water tank level, <b>Service Center</b> (drainage/water) city water hookup/tank diverter fill, drainage valves, exterior wash station w/pump switch, QuickPort® service connection hatch, sewer hose 10', <b>Service Center</b> (electrical) cable input, portable satellite dish hookup, 30-amp. power cord, QuickPort service connection hatch, <b>Tank Flushing System</b> black tank only, <b>Tank</b> holding, heated compartment, <b>Tank LP</b> , permanent mount w/gauge, <b>TrueLevel™</b> holding tank monitoring system, <b>Water Heater</b> 6-gallon electronic ignition w/motoraid & auto heater, <b>Water Pump</b> demand, <b>Water System Winterizing Package</b> bypass valve, water heater siphon tube, <b>Water Tank Fill</b> gravity w/lockable door (NA 38J), <b>Water Tank Fill</b> pressurized with diverter valve	S	S	S	S	S	S
<b>A/C</b> (roof) 14,800 BTU	S					
<b>A/C</b> (roof) 14,800 BTU, heat pump	O					
<b>A/C (2)</b> (roof) high-efficiency w/PowerLine energy management system, ceiling distribution		S				
<b>A/C (2)</b> (roof) w/heat pumps, high-efficiency w/PowerLine energy management system, ceiling distribution	O	O				
<b>TrueAir</b> central air conditioning system with heat pump			S	S	S	S
<b>Furnace</b> 35,000 BTU	S	S				
<b>Furnace</b> 40,000 BTU, <b>Washer/Dryer Prep</b>			S	S	S	S
<b>Generator</b> 4,000-watt, Onan® MicroQuiet™ gas	S					
<b>Generator</b> 5,500-watt, Onan Marquis Gold™ gas	O	S	S	S	S	S
<b>Generator</b> 7,000-watt, Onan Marquis Gold, gas, <b>Inverter</b> DC/AC, 600-watt, <b>Solar Panel</b> 10-watt w/battery charger, <b>Water Heater</b> 6-gallon electronic ignition, 110 VAC/LP gas w/motoraid & auto heater, <b>Water Heater</b> 10-gallon electronic ignition, 120 VAC/LP gas w/motoraid & auto heater	O	O	O	O	O	O
<b>Power Cord</b> 50-amp.		O	O	O	O	O
<b>PowerLine</b> energy management system			S	S	S	S
<b>Washer/Dryer Combination</b> (requires 10-gallon water heater)			O	O	O	O

## SLIDEOUTS

<b>Slideout Room</b> bed w/slidoorm cover	S	S	S	S	S	S
<b>Slideout Room</b> dinette/galley w/slidoorm cover, StoreMore	S					
<b>Slideout Room</b> galley w/slidoorm cover			S			
<b>Slideout Room</b> lounge/galley w/slidoorm cover, StoreMore						S
<b>Slideout Room</b> sofa/dinette w/slidoorm cover, StoreMore		S	S	S	S	
<b>Slideout Room</b> TV/dining table w/slidoorm cover, StoreMore						S

## SAFETY

<b>Assist Bar</b> interior, <b>Assist Handle</b> exterior, <b>Bumpers</b> front & rear, <b>Child-Seat Tether Anchor</b> , (NA 38J), <b>Detectors/Alarms</b> LP leak, smoke, carbon monoxide, <b>Fire Extinguisher</b> 10 BC, <b>Ground Fault Interrupter</b> , <b>Light</b> courtesy w/wall switch, <b>Light</b> high-mount brakelamps, <b>Lights</b> daytime running lamps, <b>Seat Belt</b> cab 3-point, <b>Window</b> escape, <b>Windshield</b> laminated safety glass	S	S	S	S	S	S
---	---	---	---	---	---	---

## WARRANTY<sup>h</sup>

<b>12-month/15,000-mile basic limited warranty, 36-month/36,000-mile warranty on structure, 10-year limited parts &amp; labor warranty on roof skin</b>	S	S	S	S	S	S
---	---	---	---	---	---	---

- g Actual towing capacity is dependent on your particular loading and towing circumstances, which includes the GVWR, GAWR and GCWR as well as adequate trailer brakes. Please refer to the Operator's Manual of your vehicle for further towing information.  
 h See separate chassis warranty details provided in Owner's Manual.  
 i See your dealer for complete warranty information.  
 Not all items available in combination. See dealer for details.  
 Winnebago Industries' continuing program of product improvement makes specifications, equipment, model availability and prices subject to change without notice. Comparisons to other motor homes are based on the most recent information available.

NOT ALL MOTOR HOMES ARE CREATED EQUAL. As you take a closer look, you'll see that there is much more to the Winnebago Voyage than a long list of standard features and compelling floorplans. Beneath it all you'll find a SuperStructure® foundation of strength and durability, and Winnebago Industries' recognized service and warranty support.



We are committed to service. We back our motor homes with the best after-the-sale service in the industry. This includes a 12-month/15,000-mile basic limited warranty; 36-month/36,000-mile warranty on structure; standard 10-year limited parts-and-labor roof skin warranty; and complimentary 24-hour Roadside Assistance Program. TripSaver Fast Track Parts guarantees that in-stock warranty parts ship directly to your dealer within 24 hours. Winnebago Industries has a nationwide dealer service network.



Certified quality. Recreation Vehicle Dealer Association members annually rate RV manufacturers on the quality of their products, and on their sales and service support. Winnebago Industries has achieved the coveted Quality Circle Award every year since its inception, the only RV manufacturer to do so.



Warning: Joining WIT has been known to cause excessive fun. Winnebago-Itasca Travelers (WIT) is a club for owners of Winnebago Industries motor homes. WIT is a great way to meet people and offers you caravans and rallies, local and state group activities, and other benefits for RVers.

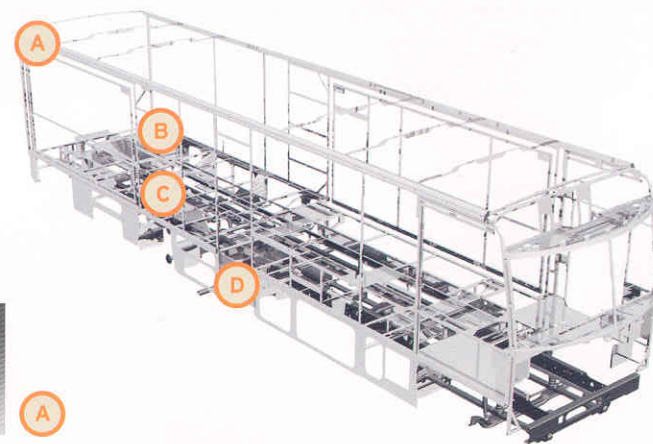


Seat belts are your most important hookup. Always buckle up.

NYSE listing: WGO

Visit [www.winnebagoind.com](http://www.winnebagoind.com) for virtual product tours and the latest product updates.

©2005 Winnebago Industries Inc., Forest City, IA 50436. Printed in USA.



SUPERSTRUCTURE is the term given to Winnebago Industries' structural motor home design and construction. Rather than a single component, it is the culmination of design integration that incorporates steel and aluminum substructures; composite-design laminated floor risers; interlocking joint technology; and Thermo-Panel® floor, roof and sidewalls to form a high-strength, durable vehicle body.

Thermo-Panel manufacturing combines a durable exterior panel with welded aluminum support substructures. The substructures are embedded in a high-density, block-foam insulation core to create a strong, durable, yet lightweight sidewall. Just another Winnebago Industries invention.

- A** Interlocking joint construction utilizes advanced extruded aluminum structural components to create integrated floor-to-sidewall and sidewall-to-roof joints. This design effectively distributes the weight of the walls and roof, making a stronger and more durable body than competitor designs that rely on screws to carry the weight.
- B** The foundation substructure assembly is precision-aligned to maximize strength and cross-coach support as well as durability.
- C** Laminated risers feature a welded aluminum core for improved strength and provide a stable base for the floor structure and storage compartments.
- D** Critical steel components are treated using an advanced electrodeposition coating process that provides superior corrosion protection.



One-year-old Winnebago Industries' fiberglass roof



One-year-old competitor's rubber roof

**BUILT TO A HIGHER STANDARD.**

The Voyage features a crowned, one-piece fiberglass roof skin backed with a 10-year limited parts-and-labor roof skin warranty. Fiberglass offers superior strength, attractiveness and durability compared to rubber roofs found on many competitive models. Over time, rubber roofs are susceptible to chalking, streaking and degradation, and have less puncture and tear resistance than fiberglass.