



**CONQUEST**  
MOTORHOMES

Off the map, on the mark.



"Do not go where the path may lead, go instead where there is no path and leave a trail." -Ralph Waldo Emerson-



2007 Conquest



Off the map, on the mark.

**LIVING CONVENIENCE...**

Living off the map doesn't mean you have to live like it. Our spacious living quarters feature a well equipped galley, space saving entertainment center, stain resistant plush carpet, comfort plus furniture, and H-ducted ventilation system giving you all the comforts you would enjoy at home.



**6316 Kitchen Gally** features a 3-burner high performance range; 2-door, 2-way refrigerator, deluxe countertops and large convection microwave.



**6331 Master Bedroom** highlights a large king bed, large wardrobe closet, expansive views and an optional flat screen TV.



**Hinged Entertainment Center** features a Flatscreen TV that swings into a side cabinet when not in use to maximize space in the cabover sleeping area.



**6331 Comfort Plus/Dream Dinette** offers more than a great place to visit and eat. It's soft spring loaded cushions turn down to form a sleeping area.



**OPTIONAL OVERHEAD ENTERTAINMENT CENTER**



**TAN**



**GREEN**



**CARPET**

Available only with Tan & Green



**BLUE**



**PLATINUM**



**CARPET**

Available only with Blue & Platinum



**ISLAND PALM**



**CARPET**

Available only with Island

Off the map, on the mark.

**CHASSIS COMFORT AND SAFETY...**

When living the life of an RVer, half the fun is experienced enjoying the open road traveling to your destination. It's no wonder that Conquest motorhomes and Chevrolet focused on the ergonomics, handling, visibility and weight capabilities of the Chassis to make your travels safe and comfortable.

**STABIL-RIDE Suspension System**

The best just got better. The optional Stabil-Ride™ suspension system integrates parabolic leaf springs, auxiliary springs, a stabilizer bar and tuned shocks, designed to provide a low maintenance, stable ride comparable to the ride of a diesel pusher. Enjoy unsurpassed handling with reduced body sway, particularly while cornering, and superior straight-line stability.

• INTENSE 19,500 LB. GVWR

• UP TO 3,000 LBS. CARGO CARRYING CAPACITY



**COCKPIT CONTROLS**

- DRIVER AND PASSENGER AIRBAGS
- AM/FM CD PLAYER W/ LARGE BUTTONS
- TILT STEERING
- 2-WAY ADJUSTABLE SEATS
- POWER LOCKS AND DOORS
- AVAILABLE BACK UP MONITOR
- OVERSIZED SIDE-VIEW MIRROR

**SUPERIOR VISIBILITY**

When negotiating a tricky curve in the campground or on a major city street, there will be no reason to worry while you're in the Chevrolet Kodiak. With a 54 degree turning radius, giant mirrors, large windshield and sloped hood this vehicle drives more like a light duty truck. Sloped hood allows the driver to see just a mere 13 feet in front of them, doubling their field of vision versus the traditional 26 feet.



CHEVROLET KODIAK C5500

VISIBILITY AT 13 FEET

FORD F450/F550

VISIBILITY AT 26 FEET



**Chevy Kodiak Chassis**



Easy Access  
Pull Forward Hood

Powerful Chevrolet  
Gas Engine w/  
Duramax Diesel option

Breakaway  
Mirrors

Rust-Prohibitive  
Coating on Frame



Multi-Leaf  
Suspension

Four Wheel  
Disc Breaking

Ergonomically  
Spaced Steps

Up-Level Headlights  
with chrome treated  
front bumper and grill

• SUPERIOR TOWING CAPACITY 26,000 GCWR

• 10,000 LB. HITCH RATING • 19.5" TIRES

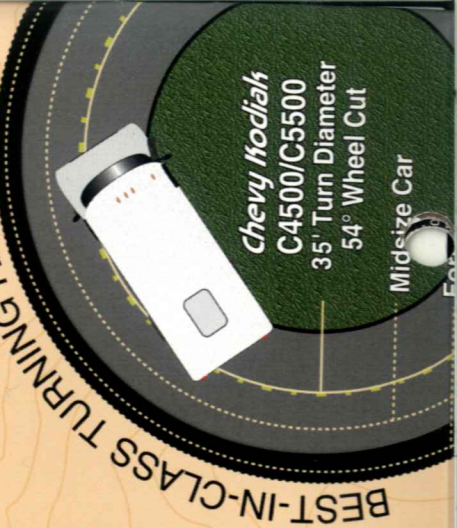
**VORTEC™ 8.1 LITRE V8  
GASOLINE ENGINE** (standard)  
HP 325hp  
Torque LB-FT 450

Gulf Stream specifies an extra heavy duty hitch rated at 10,000 lb. However it is up to the owner not to exceed the Gross Combined Weight Rating (GCWR).  
GCWR is calculated as follows:

**DURAMAX™ 6600 V8  
TURBO DIESEL** (optional)  
HP 300hp  
Torque LB-FT 605

**ALLISON™ 1000 SERIES  
AUTOMATIC TRANSMISSION**  
(standard)  
5 speed 1000  
Gross Torque (lb-ft) 620

**BEST-IN-CLASS TURNING RADIUS**



**Chevy Kodiak**  
C4500/C5500  
35' Turn Diameter  
54° Wheel Cut

Midsize Car



### STANDARD EXTERIOR GRAPHICS

### Popular Options

- CONQUEST PACKAGE (REQUIRED)
- MAPLE M&T CABINET DOORS (RAISED PANEL IN KITCHEN & LR)
- HARDWOOD STILES & TRIM
- COMFORT PLUS DINETTE
- UPGRADED LIGHTING
- SUPERSLICK FIBERGLASS EXTERIOR WALLS
- OTR CONVECTION MICROWAVE
- W/3-BURNER TOP
- 10,000 LB HITCH
- RUNNING BOARDS
- SIDE CABOVER ENTERTAINMENT
- CENTER W/ FLATSCREEN COLOR TV
- DIESEL PACKAGE
- DURAMAX 6.6 L DIESEL CHASSIS
- ELECTRONIC EXHAUST BRAKE
- 5.5 ONAN DIESEL GENERATOR
- JACKS
- EXTERIOR PAINTED SKIRT
- STABIL-RIDE STABILIZER (REQUIRED)
- 11,000 BTU DUCTED REAR AC
- 15,000 BTU DUCTED AC IPO 13,500 AC
- HEATED HOLDING TANKS
- 5.5 ONAN GAS GENERATOR
- EMERGENCY START SWITCH
- DUAL AUXILIARY BATTERIES
- 16' ROLL OUT AWNING
- FRONT WINDOW
- REAR WINDOW
- LADDER
- SPARE TIRE & CARRIER (6331 6341)
- BACK-UP MONITOR
- 3-SPEED FANTASTIC FAN (KITCHEN)
- (7) FLUORESCENT LIGHTS
- DSS PRE-WIRE
- DVD PLAYER
- HOME THEATRE SURROUND SOUND
- OUTSIDE ENTERTAINMENT CENTER
- PHONE JACK
- FULL CABOVER ENTERTAINMENT
- CENTER W/FLAT SCREEN COLOR TV
- REAR FLAT SCREEN COLOR TV W/REMOTE (6331 6341)
- LRG 2-WAY DOUBLE DOOR REFER
- RANGE COVER
- DUAL FLIP DOWN TV'S IN BUNKS(6331 6341)

### Electrical

- TV TRAY (6316)
- CEILING LIGHT WALL SWITCH
- MONITOR PANEL
- GENERATOR SWITCH & HOUR METER
- TV JACK IN BEDROOM
- CABLE TV READY
- CD PLAYER IN CAB
- TV ANTENNA W/AMP & BOOST
- 20" LCD COLOR TV ACROSS FROM BUNKS W/WIRELESS HEADSETS (6341)

### Chassis

- CHEVY KODIAK V8 ENGINE, 80 GAL FUEL TANK W/POWER LOCKS & WINDOWS

### Exterior

- FULL WALL SLIDE (6319)
- SLIDE OUT ROOM (SOFA, DIN)
- SLIDE OUT ROOM (KING BED) (6331)
- SLIDE OUT ROOM (BED/BUNK BEDS) (6341)
- WELDED ALUMINUM PERIMETER FRAME
- LAMINATED RADIUS DUCTED ROOF
- LAMINATED STEEL FRAME FLOOR
- W/METAL UNDERBELLY
- RADIUS TINTED WINDOWS
- SLIDE OUT TOPPER (6316, 6319)
- (2) SLIDE OUT TOPPERS (6331 6341)
- BASEMENT STORAGE
- SPRING CLIPS FOR STORAGE DOORS
- BUMPER COVER
- DOUBLE ELECTRIC STEP
- STAINLESS STEEL WHEEL INSERTS
- UNDERCOAT PAINT
- REAR MUD FLAPS
- HEATED & REMOTE EXTERIOR SIDEVIEW MIRRORS

### Bath

- CORNER SHOWER W/PLATINUM NEO-ANGLE SHOWER DOOR (6316 6331)
- 24 X 38 SHOWER W/ACCORDION SHOWER DOOR (6341)
- SKYDOME
- POWER BATH VENT

### Power

- AUXILIARY BATTERY
- 50 AMP SERVICE W/AUTO CHANGE OVER & CONVERTER
- GENERATOR PREP
- BATTERY DISCONNECT

### Furnishings

- QUEEN BED W/LIFTS, INNERSPRING MATTRESS, BEDSPREAD & PILLOWS (6316 6341)
- (2) 28 X 72 BUNK BEDS (6341)
- KING BED W/LIFTS, INNERSPRING MATTRESS, BEDSPREAD & PILLOWS (6331)
- SINGLE BARREL CHAIR
- 2-WAY D/P SEATS W/WARMRESTS
- H-A-B SOFA
- PLEATED PRIVACY DOOR
- PLEATED NIGHT SHADES THROUGHOUT
- INSIDE HANDRAIL

### Décor

- ROLL GOODS IN KITCHEN, BATH, & HALL; CARPET OTHER AREAS
- HARD ROCK MAPLE INTERIOR
- FLUORESCENT LIGHT OVER KITCHEN SINK

### Heating & Cooling

- DASH AC
- 13,500 BTU DUCTED AC
- 30,000 BTU FURNACE (6316)
- 35,000 BTU FURNACE (6331 6341)

### Appliances

- 6 GAL ELECTRONIC IGNITION WATER HEATER W/BYPASS VALVE
- LP GAS TANK
- CARBON MONOXIDE DETECTOR
- LP LEAK DETECTOR
- SM, 2-WAY DBL DOOR REFER

Chassis	Chevy Kodiak
Engine	325 Hp, V-8
Fuel	80
GVWR	19,500
Length	32'-7"
Height w/AC	11'-10.5"
Width	101"
Wheelbase	213.5"
Fresh	54 gal.
Grey	52 gal.
Black	52 gal.
LP Gas Tank	64 lbs.
Furnace (BTU's)	30,000
Water Heater w/DISI	6 gal.
Ext Storage	153.48

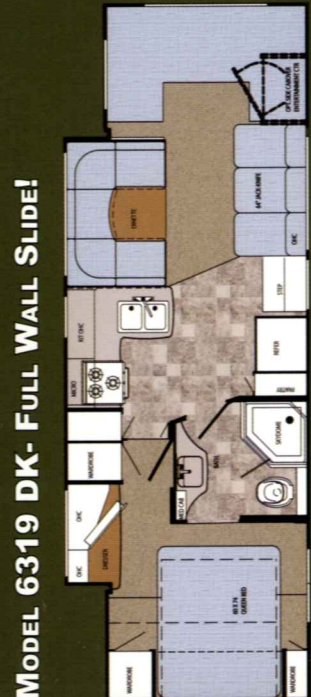
Chassis	Chevy Kodiak
Engine	325 Hp, V-8
Fuel	80
GVWR	19,500
Length	32'-11"
Height w/AC	11'-10.5"
Width	101"
Wheelbase	213.5"
Fresh	40 gal.
Grey	52 gal.
Black	52 gal.
LP Gas Tank	64 lbs.
Furnace (BTU's)	30,000
Water Heater w/DISI	6 gal.
Ext Storage	89.8

Chassis	Chevy Kodiak
Engine	325 Hp, V-8
Fuel	80
GVWR	19,500
Length	33'-9"
Height w/AC	11'-10.5"
Width	101"
Wheelbase	225.5"
Fresh	85 gal.
Grey	52 gal.
Black	52 gal.
LP Gas Tank	64 lbs.
Furnace (BTU's)	30,000
Water Heater w/DISI	6 gal.
Ext Storage	60.4

Chassis	Chevy Kodiak
Engine	325 Hp, V-8
Fuel	80
GVWR	19,500
Length	34'-9"
Height w/AC	11'-10.5"
Width	101"
Wheelbase	239"
Fresh	85 gal.
Grey	52 gal.
Black	52 gal.
LP Gas Tank	64 lbs.
Furnace (BTU's)	30,000
Water Heater w/DISI	6 gal.
Ext Storage	99.52



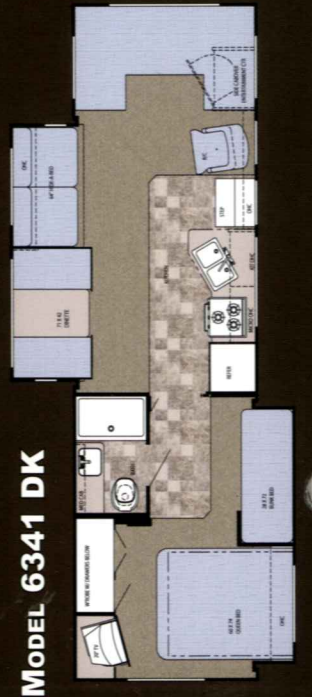
MODEL 6316 DK



MODEL 6319 DK- FULL WALL SLIDE!



MODEL 6331 DK



MODEL 6341 DK

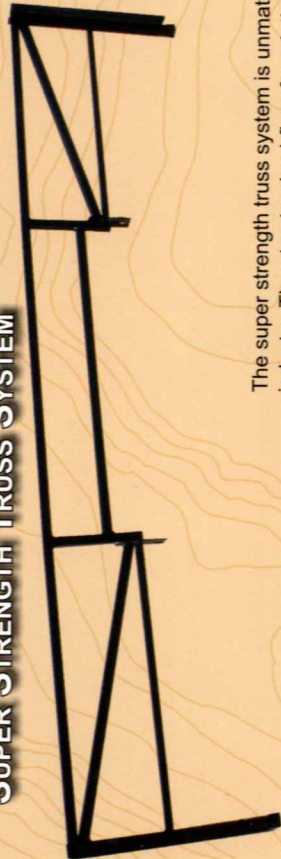
Holding tank capacities (both fresh water and waste water) are volume calculations based on overall tank dimensions. The capacities may differ from published calculations due to the result of tank installation, tank material variation, tank fitting locations and other plumbing variables.

Off the map, on the mark.

**CONSTRUCTION...**

Quality, Comfort, Strength and Value are four great words to describe our mind set while designing and constructing the conquest lineup of products. You can see and feel the quality and attention to detail we gave every component. From the strength of our foundation, roof, floor and sidewalls, down to the comfort of our seat cushions, nothing was skipped.

**SUPER STRENGTH TRUSS SYSTEM**



**6" & 8" C CHANNEL EXTENSION**



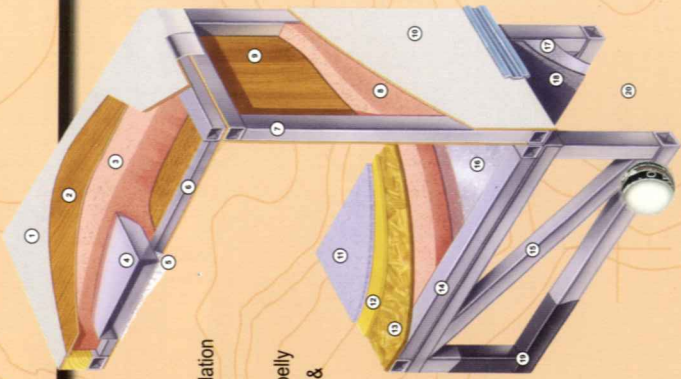
The super strength truss system is unmatched in the class C industry. The structural subfloor foundation begins by welding a network of steel web trusses to the chassis rail. Specifically designed to distribute and transfer the tremendous forces from the coach to the chassis rail these trusses are individually tested to withstand 6,000 pounds each.

When the chassis is stretched, Gulf Stream stands alone in the industry by using a full (6" on LE) or (8" on Super C) C channel extension versus the traditional 4" or less. This practice adds to the strength of the foundation and offers peace of mind that towing is safe on an extension that is true to the chassis.



# Conquest Motorhomes, Dare to Compare

1. Rubber Roof For Greater Energy Efficiency and Dependability.
2. Luan Decking for Additional Strength.
3. Molded, High Density EPS (Expanded Polystyrene) Roof Brick Insulation - Provided Consistent Insulation Value as well as Superior Dimensional Rigidity.
4. One-Piece Formed Aluminum Air Conditioning Duct, Completely Surrounded By EPS Insulation. LE & Super C
5. Bubble-Wrapped Foil Insulation Provides Superior Insulation and Helps Prevent Condensation.
6. Rugged, Yet Light-weight, Welded Tubular Aluminum Roof Framing.
7. Rugged Heavy-Gauge Tubular Aluminum, Fixture Welded to Form the Sidewall Framing.
8. High-Density EPS Insulation Provides Superior Lamination and Bonding Characteristics and Insures Greater Energy Efficiency.
9. Interior Wall Panels Securely Laminated to Sidewall Framing.
10. "Super Slick" Fiberglass Exterior Vacuum-bond Laminated to Sidewall Framing for Lasting Beauty and Durability. (Option)
11. High-Quality Stain-Resistant Carpeting Available in Designer Coordinated Colors.
12. Extra-Thick Padding Under Carpet Provides Extra Comfort and Increases Carpet Durability.
13. Floor Decking Laminated to Steel Floor Structure Assures a Quiet, Long-Lasting Rigid Floor and comes with a 10-Year Warranty.
14. Heavy-Gauge Tubular Steel Floor Framing, Fixture Welded for Extra Strength and Stability.
15. Heavy-gauge Tubular Steel Webbed Tuff-Truss Floor Truss
16. Seamless Layer of Galvanized Steel Securely Laminated to the Steel Floor Framing. (Underbelly
17. Galvanized Steel Used to Form Each Storage & Holding Compartment.
18. Durable All-Weather Carpeting Completes Each Accessible Storage Compartment, Providing Extra Protection for Luggage and Valuables.
19. Rust-Prohibitive Paint Coating Applied to All Steel Framing Assures Corrosion and Rust Protection.
20. The Industry's Strongest, Most Spacious Exterior Storage Compartments.



# Added, Value

Super C & LE only



Unlike traditional plywood and foam seating Comfort Plus Seating features the strength of steel and the comfort of a sprung dinette cushion.



PRE-DRILLED  
HARDWOOD  
CONSTRUCTION

Super C & LE only

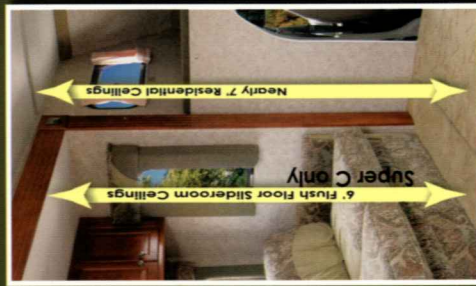
**SOLID  
HARDWOOD  
CABINERY**

COMPETITOR'S CABINERY



Our residential style cabinets are constructed of solid hardwood doors and fronts that are pre-drilled and screwed then they are stained and top coated with a furniture grade finish that provides long lasting beauty and durability as well as adding strength and quietness to your motorhome.

Other companies use wrapped cabinet fronts prone to peeling, fading and tearing. The softer composite wood used does not hold screws as well as hardwood resulting in loss of strength and squeaking. Discoloration will degrade the beauty and lower the value of the motorhome.



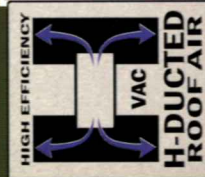
The Gulf Stream Class C's have nearly 7' interior ceilings for a residential look and feel

**FLUSH FLOOR**  
slide out rooms



Super C only

Gulf Stream Class C's offer flush floor slides for a residential look and feel with 6 foot ceilings.



Super C & LE only

Dual metal H-Ducted air conditioning system with foil bubble wrapped insulation for improved climate control.

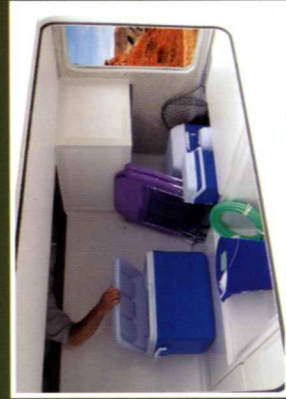


Our lowered entry door and built in stair well eliminates the need for an exterior step making entry into your motorhome safer and easier. Several models have magnetic door stays that are easy to use and dependable.



**GALVANIZED  
STEEL  
STORAGE  
COMPARTMENTS**

Seamless, carpeted, galvanized steel storage compartments safely cradle your valuables. Rust protective paint and foam sealed for extended life and a quiet ride.



Only available on the Super C 6316 Enormous, four point access (3 exterior, 1 interior), one-piece molded fiberglass storage garage designed to maximize storage capacity and accessibility.

# Value, Added

## G.O.L.D. Program

(Gulf Stream Ownership Lifetime of Dedication)

Gulf Stream is dedicated to our customers and their enjoyment of our products. Our golden promise is to call you within four weeks of the new vehicle purchase date welcoming you to the Gulf Stream family. This call, made by your dedicated customer care person, is to let you know that if you ever need assistance with the operation of components, troubleshooting, or if you ever need to locate an authorized service center, you can rest assured that help is but a phone call away. With the G.O.L.D. Program we'll be there for you for the lifetime of your RV.



## Coach-Net®

24 HR. EMERGENCY ROADSIDE ASSISTANCE

- One Year Coach-Net Membership
- Towing and Winching
- Flat Tire Change
- Mobile Mechanic
- Delivery of emergency Fluids
- Jump-Start / Battery Boost
- Lockout

**2 YEAR  
UNLIMITED MILEAGE  
TRANSFERABLE  
WARRANTY**

ON STRUCTURAL COMPONENTS\*  
One year unlimited mileage total use warranty under normal use against defects in material and/or workmanship in construction and original components. \*For purposes of this warranty, "Structural components" shall be limited to the structure of the motorhome. See the official written Gulf Stream Co. Limited Warranty for details.

Off the map, on the mark.



## Limited Edition Package...

Our LE package takes the standard Conquest to the next level of comfort and value with the addition of twenty one features to enhance your new motorhome.



Ⓢ G-SOUND

Ⓢ FLAT SCREEN COLOR TV



Ⓢ SIDE CABOVER ENTERTAINMENT CENTER



Ⓢ SIDE CABOVER WINDOW



Ⓢ KITCHEN WINDOW



Ⓢ UPGRADED LIGHTING



Ⓢ MAPLE MORTISE & TENON CABINET DOORS



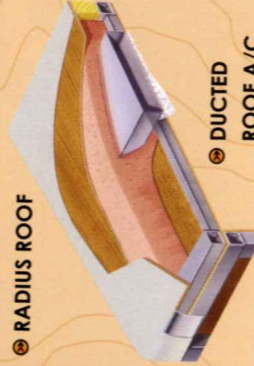
Ⓢ HARDWOOD TRIM



Ⓢ HARDWOOD CABINET STILES



Ⓢ RADIUS ROOF



Ⓢ DUCTED ROOF A/C

Ⓢ ALUMINUM BED BASE



Ⓢ EXTERIOR ACRYLIC GRAB HANDLE



Ⓢ LIGHTED TRUNKS



Ⓢ UPGRADED DASH



Ⓢ RANGE COVER



Ⓢ MAPLE CABINET DOORS





SOFT TOUCH VINYL CEILING

DUCTED ROOF A/C

G-SOUND

SIDE CABOVER ENTERTAINMENT CENTER & FLATSCREEN COLOR TV

COMFORT PLUS/DREAM DINETTE



INTERIOR UPGRADE FABRICS

CARPET IN LIVING ROOM & BEDROOM

UPGRADED DOOR IN TO BEDROOM

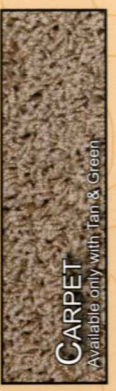
LIVING QUARTERS • MODEL 6296



TAN



GREEN

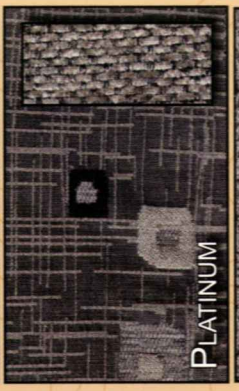


CARPET

Available only with Tan & Green



BLUE

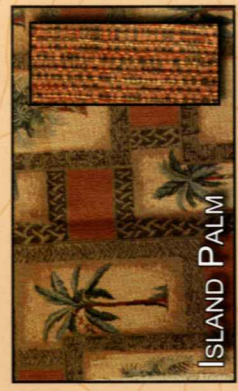


PLATINUM



CARPET

Available only with Blue & Platinum



ISLAND PALM



CARPET

Available only with Island Palm

Off the map, on the mark.



## Specifications & Floorplans...

We map out our standards and options so that you can make your decisions wisely. Check out our wide range of floorplans and sleeping arrangements and choose the best to suit your traveling needs.



### STANDARD EXTERIOR GRAPHICS

#### Chassis

- 12,300 GVWR, 139" WB, CHEVY VORTEC 6.0 ENGINE (6211)
- 12,300 GVWR, 159" WB, CHEVY VORTEC 6.0 ENGINE (6255 6280)
- 14,050 GVWR, 159" WB, CHEVY VORTEC 6.0 ENGINE (6276 6296 6316)

#### Exterior

- SMOOTH FIBERGLASS EXTERIOR WALLS
- RADIUS TINTED WINDOWS
- BASEMENT STORAGE
- SPRING CLIPS FOR STORAGE DOORS
- UNDERCOAT PAINT
- SINGLE ELECTRIC STEP (6211)
- BUMPER COVER
- MAG LOOK WHEEL COVERS
- REAR MUD FLAPS
- SLIDE OUT TOPPER (6316)
- SLIDE OUT TOPPERS (6276 6296)
- SLIDE OUT ROOM (SOFA, DIN) (6316,6319)
- SLIDE OUT ROOM (SOFA) (6296)
- SLIDE OUT ROOM (DINETTE) (6276 6296)
- SLIDE OUT ROOM (BED) (6276)
- WELDED ALUMINUM PERIMETER FRAME
- LAMINATED FLAT NON-DUCTED ROOF
- LAMINATED STEEL FRAME FLOOR W/METAL UNDERBELLY

#### Décor

- ROLL GOODS THROUGHOUT COACH

#### Heating & Cooling

- DASH AC
- 25,000 BTU FURNACE (6211 6255 6280)
- 30,000 BTU FURNACE (6276 6296 6316)

#### Electrical

- TV TRAY IN BEDROOM (6280 6296B 6316)
- MONITOR PANEL
- CABLE TV READY
- CD PLAYER
- TV ANTENNA W/AMP BOOST
- TV JACK IN BEDROOM (NA 6211)
- FLUORESCENT LIGHT OVER KITCHEN SINK
- CEILING LIGHT WALL SWITCH

#### Bath

- POWER BATH VENT
- SKYDOME (NA 6211 6255)
- GLASS SHOWER DOOR (6280 6296 6316)
- SHOWER CURTAIN (6211 6255 6276)

### OPTIONAL PAINTED SKIRT



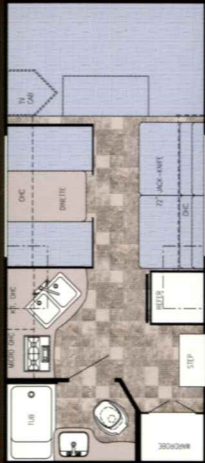
#### Popular Options

- 10,700 GVWR, 138" WB, FORD E-35, V-10 ENGINE (6211)
- 14,050 GVWR, 158" WB, FORD E-45, V-10 ENGINE (NA 6211)
- 14,050 GVWR FORD DIESEL TURBO (6280)
- LIMITED EDITION PACKAGE
- MAPLE M&T CABINET DOORS
- COMFORT PLUS DINETTE
- UPGRADED LIGHTING
- HARDWOOD STILES & TRIM
- RADIUS DUCTED ROOF
- G-SOUND
- INTERIOR UPGRADE FABRICS
- SIDE CABOVER ENTERTAINMENT CENTER W/20" FLAT SCREEN COLOR TV
- CARPET IN LIVING ROOM & BEDROOM
- EXTERIOR ACRYLIC GRAB HANDLE
- SIDE CABOVER WINDOW
- KITCHEN WINDOW
- LIGHTED TRUNKS
- ALUMINUM BED BASE
- RANGE COVER
- UPGRADED DASH
- SOFT TOUCH VINYL CEILING
- DUCTED ROOF A/C
- CONQUEST PACKAGE (REQUIRED)
- 4.0 GENERAC GENERATOR - ENCLOSED
- AWNING 13,500 BTU ROOF AIR CONDITIONER
- UPGRADE BLUE (REQUIRES LE PKG)
- UPGRADE TAN (REQUIRES LE PKG)
- UPGRADE GREEN (REQUIRES LE PKG)
- UPGRADE ISLAND PALM (REQUIRES LE PKG)
- UPGRADE PLATINUM (REQUIRES LE PKG)
- 15,000 BTU A/C IPO 13,500 A/C
- HEATED HOLDING TANKS

- STAINLESS STEEL WHEEL LINERS
- SLICK FIBERGLASS WALLS
- HEATED & REMOTE MIRRORS
- HITCH W/PLUG
- SPARE TIRE & CARRIER
- REAR WINDOW (NA 6211 6255)
- FRONT WINDOW
- LADDER
- ALUMINUM RUNNING BOARDS
- FIBERGLASS RUNNING BOARDS
- EXTERIOR SKIRT PAINT
- OUTSIDE RINSE & WASH SPRAY SYSTEM
- EMERGENCY START
- 3.6 ONAN GENERATOR W/LP CONVERSION (AVAILABLE W/DIESEL OPTION ONLY)
- 4.0 ONAN GENERATOR - ENCLOSED
- BACK UP MONITOR
- 3-SPEED FANTASTIC FAN
- (7) FLUORESCENT LIGHTS
- DSS PRE-WIRE
- FULL ENTERTAINMENT CENTER W/FLAT SCREEN COLOR TV
- OUTSIDE ENTERTAINMENT CENTER
- PHONE JACK
- REAR FLAT SCREEN COLOR LCD TV (6276) 315
- 6-WAY POWER OPTIMA D/P SEATS IPO CLOTH (NA CHEVY)
- TWIN BUNK BED W/WARDROBE & INNERSPRING MATTRESSES (6280 6296 6316)
- J-KNIFE SOFA IPO DINETTE (6211 6276 6280)
- LARGE 2-WAY DOUBLE DOOR REFER

## MODEL W6211 D

Chassis	Chevy/Ford opt.
Engine	V-8/V-10
Fuel	35/37
GVWR	12,300/14,050
Length	22'-9" / 22'-4"
Height w/AC	11'-3"
Width	101"
Wheelbase	139" / 138"
Fresh	22 gal.
Grey	30 gal.
Black	30 gal.
LP Gas Tank	42 lbs.
Furnace (BTU's)	25,000
Water Heater w/DSI	6 gal.
Ext Storage	17.18 cu. ft.



## MODEL W6280 D

Chassis	Chevy/Ford opt.
Engine	V-8/V-10
Fuel	57/55
GVWR	12,300/14,050
Length	30'-0" / 29'-7"
Height w/AC	11'-3"
Width	101"
Wheelbase	197" / 196"
Fresh	40 gal.
Grey	36 gal.
Black	27 gal.
LP Gas Tank	42 lbs.
Furnace (BTU's)	25,000
Water Heater w/DSI	6 gal.
Ext Storage	65.06 cu. ft.



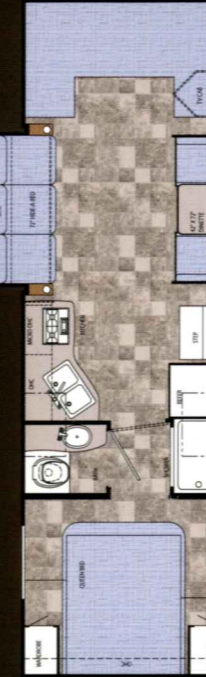
## MODEL W6255 D

Chassis	Chevy/Ford opt.
Engine	V-8/V-10
Fuel	57/55
GVWR	12,300/14,050
Length	28'-4" / 25'-11"
Height w/AC	11'-3"
Width	101"
Wheelbase	177" / 176"
Fresh	32 gal.
Grey	30 gal.
Black	30 gal.
LP Gas Tank	42 lbs.
Furnace (BTU's)	25,000
Water Heater w/DSI	6 gal.
Ext Storage	25.77 cu. ft.



## MODEL W6296 D-DUAL SLIDE!

Chassis	Workhorse/Ford opt.
Engine	V-8/V-10
Fuel	57/55
GVWR	14,050
Length	31'-2" / 30'-9"
Height w/AC	11'-3"
Width	101"
Wheelbase	209" / 208"
Fresh	40 gal.
Grey	36 gal.
Black	27 gal.
LP Gas Tank	42 lbs.
Furnace (BTU's)	25,000
Water Heater w/DSI	6 gal.
Ext Storage	72.94 cu. ft.



## MODEL W6276 D-DUAL SLIDE!

Chassis	Chevy/Ford opt.
Engine	V-8/V-10
Fuel	57/55
GVWR	12,300/14,050
Length	27'-10" / 27'-5"
Height w/AC	11'-3"
Width	101"
Wheelbase	197" / 196"
Fresh	38 gal.
Grey	38 gal.
Black	38 gal.
LP Gas Tank	42 lbs.
Furnace (BTU's)	25,000
Water Heater w/DSI	6 gal.
Ext Storage	22.26 cu. ft.



## MODEL W6316 D-SUPER SLIDE!

Chassis	Workhorse/Ford opt.
Engine	V-8/V-10
Fuel	57/55
GVWR	14,050
Length	31'-2" / 30'-9"
Height w/AC	11'-3"
Width	101"
Wheelbase	209" / 208"
Fresh	40 gal.
Grey	36 gal.
Black	27 gal.
LP Gas Tank	42 lbs.
Furnace (BTU's)	25,000
Water Heater w/DSI	6 gal.
Ext Storage	74.45 cu. ft.



## MODEL W6319 D-FULL WALL SLIDE!

Chassis	Workhorse/Ford opt.
Engine	V-8/V-10
Fuel	57/55
GVWR	14,050
Length	31'-2" / 30'-9"
Height w/AC	11'-3"
Width	101"
Wheelbase	209" / 208"
Fresh	40 gal.
Grey	36 gal.
Black	27 gal.
LP Gas Tank	42 lbs.
Furnace (BTU's)	30,000
Water Heater w/DSI	6 gal.
Ext Storage	72.65 cu. ft.



**CONQUEST**  
MOTORHOMES



**CONQUEST**  
MOTORHOMES

Off the map, on the mark.



The Conquest Checkpoint is the outward physical symbol of our role as industry leaders. Our exacting standards for creating the best possible RV Customer experience are the direction the rest of the industry seeks. Beyond the beaten path, to a new destination.

Conquest constantly looks to the future, casting a clear vision of "the next big thing" and making it happen. We don't follow trends; we set them. Beyond imagination, to reality.



Conquest Motorhome Division is a member of the Gulf Stream Coach family of products. As a privately owned company with nearly 25 years of RV manufacturing experience, Gulf Stream has set itself apart from the rest of the RV industry by giving the market exactly what it's looking for. We are constantly talking to our customers and dealers, taking their suggestions and implementing them in our products. We also use Lean Manufacturing Techniques, Six-Sigma Quality Control, Creative Standardization and 5 S practices to maximize our production efficiency and eliminate waste. Our efficiency has received accolades from Vincennes University for Total Quality Management. These practices have also gained recognition from the state of Indiana, as we have received the Indiana Governor's Award for Recycling, making us one of the few eco-friendly manufacturing companies in the industry. All these initiatives go back to one goal... To give you the highest value product offerings, quality construction, innovative features, contemporary designs, and unmatched service and on-going support.



The Gulf Streamers RV Club is a valuable benefit to all Gulf Stream owners. Members enjoy staying active and participating in the various rallies and caravans offered throughout the United States and Canada. Go to [www.streamers.gulfstreamcoach.com](http://www.streamers.gulfstreamcoach.com) for more information.



LEARN MORE ABOUT OUR WIDE RANGE OF PRODUCTS AT  
**WWW.CONQUESTMOTORHOMES.COM**

POST OFFICE BOX 1005 • NAPPANEE, IN 46550 • 1-800-289-8787

For more information on available options, contact your local Conquest dealer, [www.conquestmotorhomes.com](http://www.conquestmotorhomes.com) or Gulf Stream Coach, Inc. Gulf Stream Coach, Inc. reserves the right to make changes in prices, colors, materials, components and specifications and to discontinue models at any time without notice or obligation. Gulf Stream Coach, Inc. assumes no responsibility for any type of reproduction of specifications or floorplans in this brochure. Photographs may show equipment or items that are not included in the purchase price of the coach. Test drive and review a current model at your nearest Conquest dealer. © 2006 Gulf Stream Coach, Inc., Nappanee, Indiana U.S.A. 01-07-SP-10k Ver2



**CONQUEST**  
MOTORHOMES

Off the map, on the mark.



The Conquest Checkpoint is the outward physical symbol of our role as industry leaders. Our exacting standards for creating the best possible RV Customer experience are the direction the rest of the industry seeks. Beyond the beaten path, to a new destination.

Conquest constantly looks to the future, casting a clear vision of "the next big thing" and making it happen. We don't follow trends; we set them. Beyond imagination, to reality.



Conquest Motorhome Division is a member of the Gulf Stream Coach family of products. As a privately owned company with nearly 25 years of RV manufacturing experience, Gulf Stream has set itself apart from the rest of the RV industry by giving the market exactly what it's looking for. We are constantly talking to our customers and dealers, taking their suggestions and implementing them in our products. We also use Lean Manufacturing Techniques, Six-Sigma Quality Control, Creative Standardization and 5 S practices to maximize our production efficiency and eliminate waste. Our efficiency has received accolades from Vincennes University for Total Quality Management. These practices have also gained recognition from the state of Indiana, as we have received the Indiana Governor's Award for Recycling, making us one of the few eco-friendly manufacturing companies in the industry. All these initiatives go back to one goal... To give you the highest value product offerings, quality construction, innovative features, contemporary designs, and unmatched service and on-going support.



The Gulf Streamers RV Club is a valuable benefit to all Gulf Stream owners. Members enjoy staying active and participating in the various rallies and caravans offered throughout the United States and Canada. Go to [www.streamers.gulfstreamcoach.com](http://www.streamers.gulfstreamcoach.com) for more information.



LEARN MORE ABOUT OUR WIDE RANGE OF PRODUCTS AT  
**WWW.CONQUESTMOTORHOMES.COM**

POST OFFICE BOX 1005 • NAPPANEE, IN 46550 • 1-800-289-8787

For more information on available options, contact your local Conquest dealer, [www.conquestmotorhomes.com](http://www.conquestmotorhomes.com) or Gulf Stream Coach, Inc. Gulf Stream Coach, Inc. reserves the right to make changes in prices, colors, materials, components and specifications and to discontinue models at any time without notice or obligation. Gulf Stream Coach, Inc. assumes no responsibility for any type of reproduction of specifications or floorplans in this brochure. Photographs may show equipment or items that are not included in the purchase price of the coach. Test drive and review a current model at your nearest Conquest dealer. © 2006 Gulf Stream Coach, Inc., Nappanee, Indiana U.S.A. 01-07-SP-10k Ver2