

Georgetown

LET YOUR IMAGINATION DRIVE YOU



Georgetown



A BERKSHIRE HATHAWAY COMPANY

MODEL 378 SHOWN WITH THE THUNDER INTERIOR DECOR AND ONYX COUNTERTOPS, NOTICE THE STANDARD 40" LCD/HD TV



GEORGETOWN FROM FOREST RIVER EQUIPS YOU WITH EVERYTHING FOR YOUR TRAVELS EXCEPT THE DESTINATION. WITH EIGHT THOUGHTFULLY DESIGNED FLOOR PLANS TO CHOOSE FROM, THE ENGINEERING AND INTERIOR DESIGN TEAM HAVE CAREFULLY CONSTRUCTED EACH OF THE FLOOR PLANS TO FLOW EFFORTLESSLY, BRINGING YOU MAXIMUM COMFORT AND ENJOYMENT.

THE GEORGETOWN MODEL 378 IS THE EPITOME OF TRUE COMFORT ON THE ROAD. THE SALON AREA IS WIDE OPEN AND INVITING, FEATURING A FREE STANDING DINETTE, A FIREPLACE, A 40" LCD/ HD TV AND PLENTY OF ROOM TO STRETCH OUT.

THE KITCHEN FEATURES A 30" OVER THE RANGE MICROWAVE OVEN, SOLID SURFACE COUNTERTOPS, STAINLESS STEEL APPLIANCES, THREE BURNERS AND OVEN WITH FLUSH SOLID SURFACE COVERS, A COUNTERTOP EXTENSION AND AN ABUNDANCE OF CABINET STORAGE SPACE.

THE BATHROOM OF THE 378, JUST AS IN ANY OF OUR PRODUCTS, AMENITIES ABOUND. OUR BATHROOMS FEATURE CONTEMPORARY VESSEL SINKS AND HI RISE FAUCETS. THIS DESIGN ALLOWS US TO MAXIMIZE VALUABLE COUNTERTOP SPACE AND ALSO ALLOWS US TO MINIMIZE THE FOOTPRINT OF THE VANITY PROVIDING MORE USABLE BATHROOM SPACE.

MODEL 378 WITH OPTIONAL MIDNIGHT FULL BODY PAINT

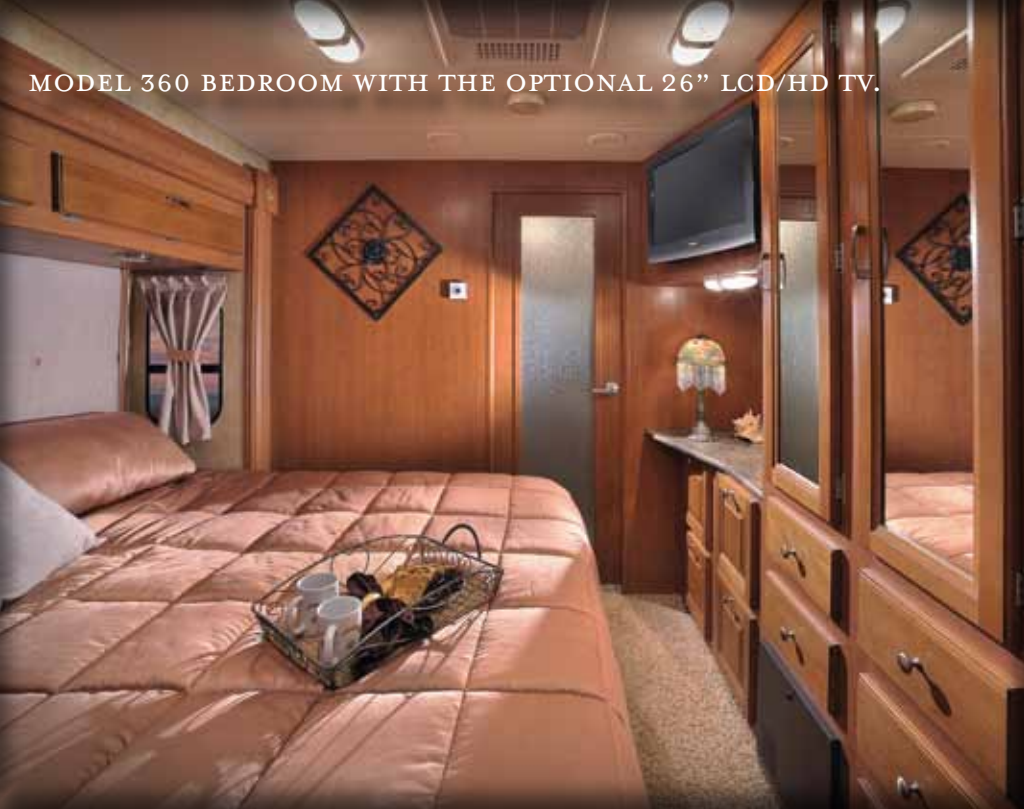


MODEL 378 KITCHEN FEATURING THE ONYX COUNTERTOPS.



MODEL 360 MASTER BATH AREA WITH DUAL VESSEL SINKS THAT PROVIDE MORE USEABLE COUNTER SPACE THAN THE COMPETITION.

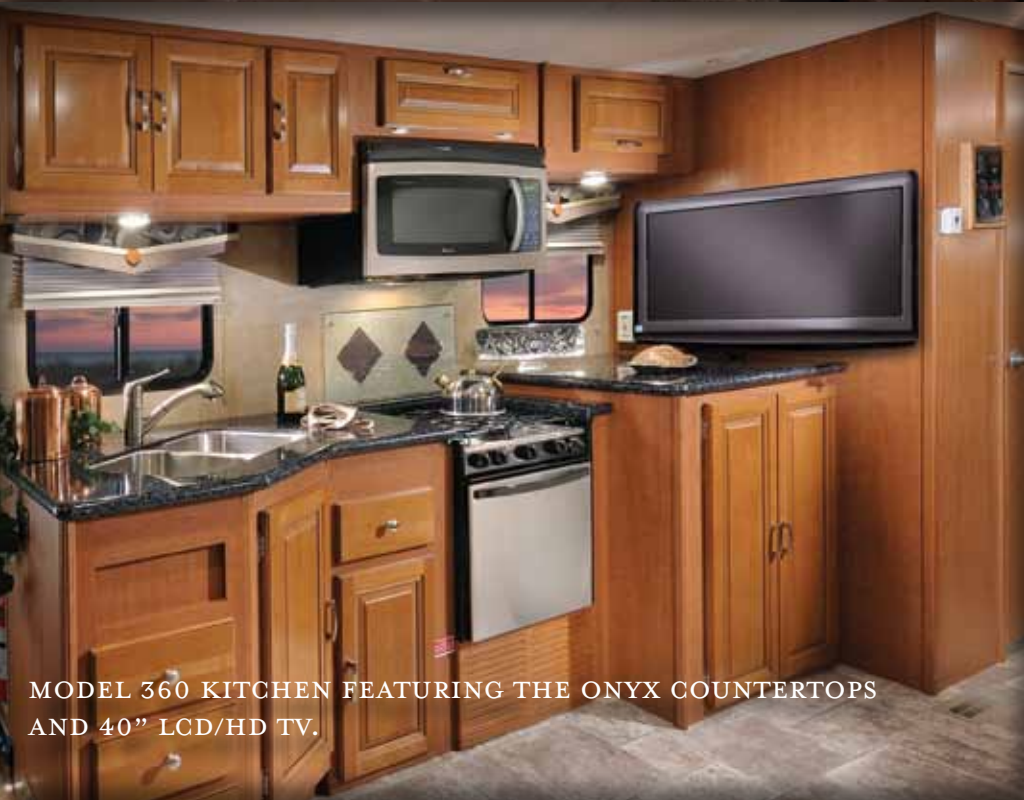
MODEL 360 BEDROOM WITH THE OPTIONAL 26" LCD/HD TV.



MODEL 360 GUEST BATHROOM



MODEL 360 KITCHEN FEATURING THE ONYX COUNTERTOPS AND 40" LCD/HD TV.



AT GEORGETOWN IT'S ALL ABOUT CHOICES. TO COMPLIMENTING THE EIGHT FLOORPLANS, WE HAVE AN ABUNDANCE OF OTHER OPTIONS. THESE INCLUDE FIVE EXTERIOR OPTIONS, NUMEROUS INTERIOR DECORS AND A VARIETY OF CHOICES YOU CAN MAKE TO PERSONALIZE YOUR UNIT.

THE MODEL 360 IS A UNIT THAT OFFERS YOU LUXURIOUS LIVING COMPLETE WITH A BATH AND A HALF. THE HALF BATH STILL OFFERS THE CONTEMPORARY STYLING AND PROFESSIONAL LAYOUT OF OUR LARGE MASTER BATHS, BUT AFFORDS YOU AND YOUR GUESTS COMPLETE PRIVACY WHILE YOU ENTERTAIN.

THE STANDARD WASHER/DRYER CABINET OFFERS PLENTY OF SPACE TO ORGANIZE LAUNDRY. THE SWING ARM 40" LCD/HD TV ALLOWS MULTIPLE VIEWING ANGLES FOR ALL SEATING POSITIONS.

ROUND OUT THIS GREAT MODEL WITH A PROFESSIONALLY DESIGNED BEDROOM WITH NUMEROUS STORAGE AREAS AND AN OPTIONAL 26" LCD/HD TV.

STANDARD EXTERIOR GRAPHICS



MODEL 360 SALON/GALLEY AREA SHOWN WITH ONYX COUNTERTOPS AND THE THUNDER DECOR OPTION. THE 360 COMES STANDARD WITH A STAINLESS STEEL FOUR DOOR REFRIGERATOR.

MODEL 337 SHOWN WITH THE
LATTE INTERIOR.



MODEL 337 BEDROOM AREA.



THE INNOVATIVE SPATIAL DESIGN OF THE GEORGETOWN 337 OFFERS THE CHOICE OF WIDE OPEN SPACES OR TOTAL PRIVACY.

THE SPACE FLOWS CONTINUOUSLY AND SEAMLESSLY FROM THE COCKPIT TO THE FORWARD LIVING AREA IN AN INNOVATIVE LAYOUT TO CREATE A MORE PRONOUNCED SENSE OF SPACE.

THE GALLEY IS SITUATED BEHIND THE LIVING AREA IN THE CLASSIC L SHAPE, PROVIDING THE OWNERS A CHANCE TO INTERACT WITH GUESTS WHILE THEY PREPARE REFRESHMENTS IN THE FULLY EQUIPPED KITCHEN.

MODEL 337 KITCHEN FEATURING THE ONYX COUNTERTOPS.



THE LIVING AREA IS FURNISHED IN AN EXTREMELY CONTEMPORARY AND CAREFULLY CRAFTED STYLE TO MAKE OWNERS FEEL QUITE AT HOME. YOU'LL BE AMAZED WHEN YOU LOOK OUT THE WINDOW TO FIND YOURSELF ARRIVING AT YOUR LATEST DESTINATION.

GEORGETOWN GIVES YOU A TRUE HOME ON THE ROAD.

MODEL 337 WITH OPTIONAL FIRE MIST FULL BODY PAINT



EXTERIOR

- ONE-PIECE LAMINATED FIBERGLASS ROOF
- HIGH-GLOSS GELCOAT FIBERGLASS SIDEWALLS
- SIDE-HINGE INSULATED BAGGAGE DOORS
- ROTOCAST ONE-PIECE STORAGE COMPARTMENTS
- CABLE T.V. AND PHONE JACKS
- ONE-PIECE WINDSHIELD
- LED TAILLIGHTS
- 2 COACH BATTERIES
- TRIPLE ENTRANCE STEP – ELECTRIC
- HITCH 5000 LB.
- AUTOMATIC HYDRAULIC LEVELING JACKS
- REAR LADDER
- MUD FLAPS
- OUTSIDE SHOWER
- SLIDEOUT ROOM AWNING(S)
- POWER MAIN AWNING
- 30" ENTRANCE DOOR
- REMOTE HEATED MIRRORS (OPT.)
- TV ANTENNA WITH BOOSTER
- 22.5" TIRES WITH POLISHED ALUMINUM WHEELS
- DELUXE GRAPHICS WITH PARTIAL PAINT PACKAGE
- FULL BODY PAINT OPTION (MIDNIGHT, ESPRESSO, FIRE MIST, CREME BRULEE)

STRUCTURAL

- INSULATED, FORMED ONE-PIECE BAGGAGE DOORS
- 3" LAMINATED, STEEL FRAMED FLOOR WITH DUCTED HEATING
- LAMINATED ALUM. FRAMED SIDEWALLS, ROOF (INCLUDING ALL OPENINGS)
- UNDER FLOOR STEEL TRUSS SYSTEM

DRIVER/PASSENGER AREA

- SOFT TOUCH DRIVER/PASSENGER RECLINING SWIVEL BUCKET SEATS
- AUXILIARY START SWITCH
- DEFROSTER FANS
- DRIVER/PASSENGER MAP LIGHTS

- SOFT TOUCH VINYL CEILING
- OPTIONAL DRIVER 6-WAY POWER SEAT
- I.C.C. FLASH
- RADIO – SINGLE CD AM/FM
- RADIO POWER SELECTOR SWITCH
- REAR VISION CAMERA WITH MONITOR & AUDIO
- COLOR SIDE CAMERAS (OPT.)

LIGHTING/DINING/GALLEY

- 30" OTR STAINLESS STEEL MICROWAVE
- 9' CURVED DOOR STAINLESS STEEL REFRIGERATOR (4-DOOR STANDARD MODELS 360, 378)
- STAINLESS STEEL OVEN W/ SEALED BURNERS
- SOLID SURFACE KITCHEN COUNTERTOP
- UNDER MOUNT STAINLESS STEEL SINK WITH FLUSH SOLID SURFACE COVERS
- PULL-OUT SPRAYER FAUCET
- FLUSH MOUNT SOLID SURFACE RANGE COVERS
- FLUSH MOUNT HALOGEN CEILING AND ACCENT LIGHTING
- CARPET FREE STEPWELL
- SATELLITE PREP
- SLIDE OUT PANTRY (W/A)
- 32" LCD HD TV WITH HOME THEATER (40" STANDARD MODELS 360, 378)
- PLEATED SHADES-DAY/NIGHT
- EURO RECLIENER WITH OTTOMAN (OPT.) (STD. 360, 378)
- SOFT TOUCH LEATHERETTE HIDE-A-BED SOFA WITH AIR MATTRESS AND STORAGE DRAWER

BATH

- 10 GALLON GAS/ELECTRIC WATER HEATER WITH DSI
- VESSEL SINK(S)
- BLACK WATER TANK FLUSH SYSTEM
- DUAL CONTROL SHOWER FAUCET WITH FLEX HEAD
- LINOLEUM IN BATHROOM AREA
- MEDICINE CABINET (W/A)
- PORCELAIN TOILET WITH FOOT FLUSH
- SHOWER SKYLIGHT

- TOWEL BAR
- WASHER/DRYER (OPT. MODELS 373, 374, 378, 360)
- WASHER DRYER PREP STD. 360 (OPT. MODELS 373, 374, 378)
- ONE-PIECE FIBERGLASS SHOWER

BEDROOM

- 60" X 75" ISLAND QUEEN BED WITH BEDSPREAD, HEADBOARD, PILLOW SHAMS AND STORAGE BELOW (72 X 75 KING BED MODELS 337, 357, 360 373, 374)
- RADIUS CORNER MATTRESS AND BED BASE

SAFETY

- 110V GFI PROTECTED CIRCUIT (KITCHEN, BATH, EXTERIOR)
- CARBON MONOXIDE DETECTOR
- EXIT WINDOW
- LPG DETECTOR
- SMOKE ALARM
- 3-POINT SEAT BELTS
- RECESS MOUNTED FIRE EXTINGUISHER (INSIDE ENTRY DOOR)

WATER/HEATING/VENTILATION/ POWER

- 50 AMP 120V DISTRIBUTION PANEL AND CORD
- 65 AMP 12V POWER CONVERTER
- ARCTIC PACKAGE* (OPTIONAL)
- WATER FILTRATION SYSTEM (1 MICRON)
- DUCTED IN-FLOOR HEAT 35,000 BTU FURNACE
- MODEL 378 TWO FURNACES (35,000 BTU AND 20,000 BTU)
- ELECTRIC BATTERY DISCONNECT
- GENERATOR – 6.5 GENERAC (STD.)
- POWER CEILING FAN IN BATH
- ROOF A/C – 13.5 BTU DUCTED – FRONT (STD.)

POPULAR OPTIONS

- 15K AIR CONDITIONER IN THE FRONT
- 13.5K AIR CONDITIONER IN THE BEDROOM
- COLOR SIDE CAMERAS
- SECOND POWER AWNING ON SLIDEOUT-373
- 5.5 ONAN GENERATOR
- AIR CONDITIONER HEAT STRIP(S) (N/A LOW PROFILE A/C(S))
- 26" LCD/HD BEDROOM TV, (19" OPT. ON 337)
- CONVECTION MICROWAVE IPO STANDARD MICROWAVE
- CONVECTION MICROWAVE AND COOKTOP IPO STANDARD MICROWAVE AND OVEN
- FANTASTIC VENT IN KITCHEN OR BATH
- FREE STANDING DINETTE WITH 4 CHAIRS (STD. ON 373, 374, 378)
- FULL BODY PAINT PACKAGE
- HEATED REMOTE MIRRORS
- LOW PROFILE AIR CONDITIONER
- DUAL PANE WINDOWS
- VISTA LOUNGE W/2 EURO RECLINERS (337, 373)
- WASHER/DRYER
- WASHER/DRYER PREP
- ARCTIC PACKAGE
- EURO RECLINER IPO BARREL CHAIR (STD. 360, 378)
- POWER DRIVERS SEAT
- POWER FRONT SUN VISOR AND MANUAL SIDE SHADES



FULL BODY PAINT OPTIONS (OPTIONS AVAILABLE ON ALL MODELS)



FIRE MIST



MIDNIGHT



ESPRESSO



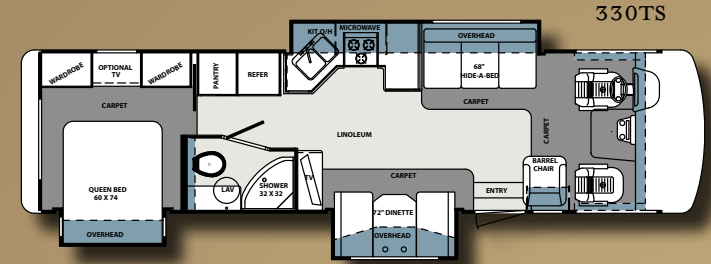
CREME BRULEE

DIMENSIONS & CAPACITIES

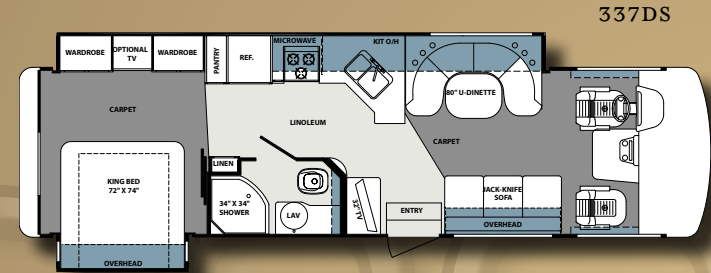
FORD OR WORKHORSE CHASSIS (22,000LB. MODELS ONLY)

MODEL	330TS	337DS	350TS	357QS	360DS	373DS	374TS	378TS
GCWR (lb.)	26000	26000	26000	26000	26000	26000	26000	26000
GVWR (lb.)	22000	22000	22000	22000	22000	22000	22000	22000
*Cargo Carrying Cap. (lb.)	4300	4310	3180	2510	2970	2750	2790	2730
Wheelbase	208"	208"	228"	228"	242"	242"	242"	242"
Fuel Capacity (gal.)	80	80	80	80	80	80	80	80
Tire Size	235/80R22.5	235/80R22.5	235/80R22.5	235/80R22.5	235/80R22.5	235/80R22.5	235/80R22.5	235/80R22.5
Interior Height	80"	80"	80"	80"	80"	80"	80"	80"
Interior Width	95 1/2"	95 1/2"	95 1/2"	95 1/2"	95 1/2"	95 1/2"	95 1/2"	95 1/2"
Overall Height w/ AC	12' 3"	12' 3"	12' 3"	12' 3"	12' 3"	12' 3"	12' 3"	12' 3"
Overall Length	34' 6"	33' 7"	36' 4"	37' 0"	37' 11"	37' 10"	37' 9"	37' 6"
Overall Width	101"	101"	101"	101"	101"	101"	101"	101"
Exterior Storage (cu. ft.)	166	145	173	177	197	198	190	198
Fresh Water (gal.)	65	65	65	65	65	65	65	65
Black Water (gal.)	41	41	41	41	82	41	41	41
Grey Water (gal.)	41	41	41	41	82	41	41	41
LP Tank (gal.)	24	24	24	24	24	24	29	24
Water Heater (gal.)	10	10	10	10	10	10	10	10
Furnace (b.t.u.)	35k	35k	35k	35k & 20k	35k	35k	35k	35k & 20k
Patio Awning	18'	18'	14'	15'	17'	10 1/2'	20'	20'

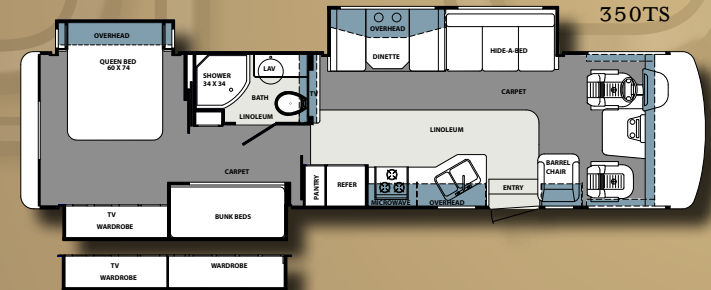
*WITH FULL GAS TANK AND LP BOTTLES



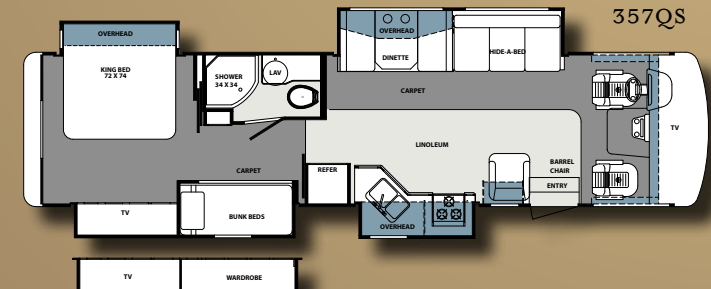
330TS



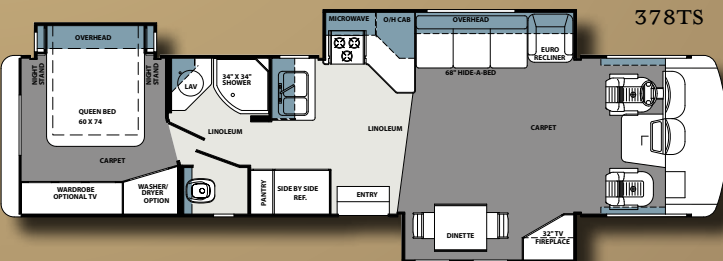
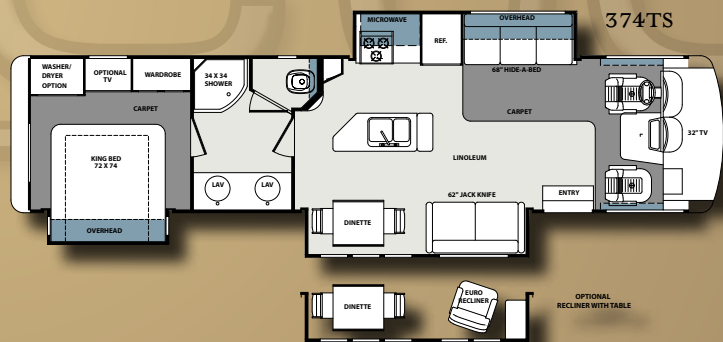
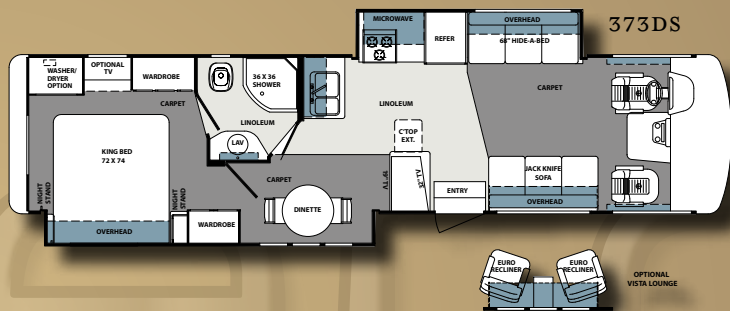
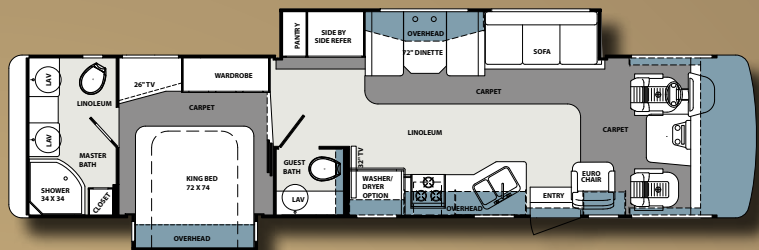
337DS



350TS



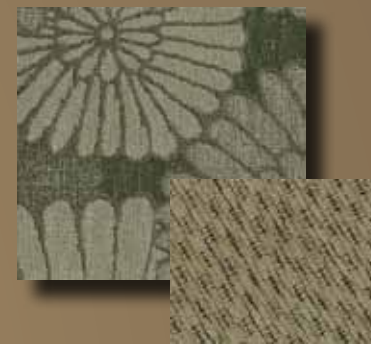
357QS



KHAKI



MIST



LATTE

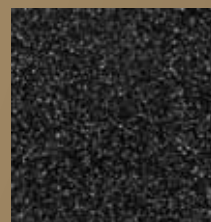


THUNDER



COUNTERTOP OPTIONS BY LG

CINNAMON MAPLE



CARAMEL

ONYX

WOOD



Georgetown



A BERKSHIRE HATHAWAY COMPANY

Forest River, Inc. 58277 S.R. 19 South Elkhart IN, 46517 Phone: 574.296.7700
Fax: 574.295.8749 www.forestriverinc.com www.forestriveraccessories.com

Scan this barcode using a QR Reader on your smart phone to learn more about Forest River and our great products.



All illustrations and specifications contained in this literature are based on the latest product information at time of publication. Forest River reserves the right to make changes in prices, colors, materials, equipment and specifications at anytime without notice and assumes no responsibility for any error in this literature. All units are shipped F.O.B. Goshen, Indiana.
CONSULT YOUR LOCAL DEALER FOR WARRANTY INFORMATION. PHOTOS MAY DEPICT OPTIONAL FEATURES. ppid 0311

Forest River Encourages You to Buy Locally

Forest River, Inc. strongly encourages our retail customers to purchase from their local dealership whenever possible due to the following factors:

- Our Dealers are as a rule, independently owned and operated businesses. Outside of those customers they personally sold products to, they are not contractually obligated to perform warranty service on Forest River products that were purchased elsewhere. There may be an occasion that you would be required to return to the point of purchase to satisfy warranty requirements.
- Although many dealerships will eventually service products not purchased at their place of business, they will usually take care of their customers and other Forest River customers who are traveling away from their local dealer as they would their own.
- Local purchases allow a customer to establish a relationship with a dealer close to home. This relationship provides the customer with a convenient location for service and support from a “home town” professional.
- The opportunity for a thorough PDI (Pre Delivery Inspection) and product orientation is an additional benefit of buying from your local dealer. Further providing the opportunity for refresher courses or the ability to get questions answered much more conveniently.
- For our Canadian customers, there are also requirements which must be met to bring an RV purchased out of the country to their home. Although not insurmountable, these requirements may involve such things as additional inspections and certifications, taxes and fees. Your local Canadian Dealer is a professional at meeting these requirements.

Forest River’s goal is for all RV Owners to fully enjoy their RV experience. In light of this goal, and considering the advantages of buying local, we encourage you to be thorough when determining what product to purchase and which dealer to purchase it from as both are key to your ultimate satisfaction and the realization of your dreams.

Your Georgetown Dealer