



THOR
MOTOR COACH

WINDSPORT

CLASS-A GAS MOTORHOME SPECIFICATIONS





32D FLOORPLAN / GLAZED CHERRY WOOD / BALTIC BRONZE DÉCOR



STANDARD GRAPHICS



PORTICO PARTIAL PAINT



POMEGRANATE FULL BODY PAINT



SMOKEY GRANITE FULL BODY PAINT



BALTIC BRONZE



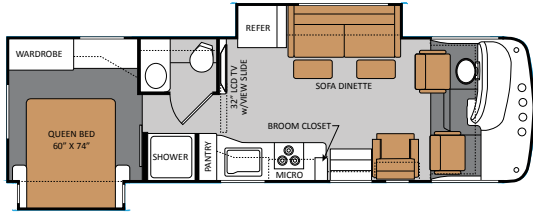
PEARL BISQUE



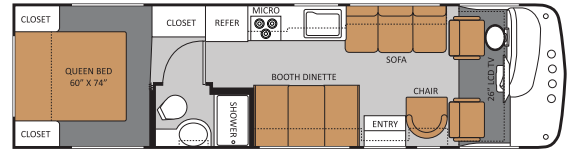
PEBBLE BEACH



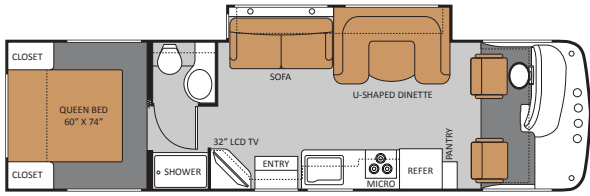
RIVERA



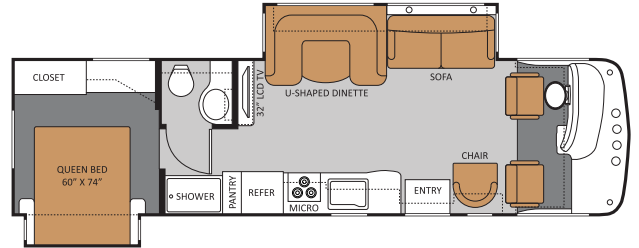
29X



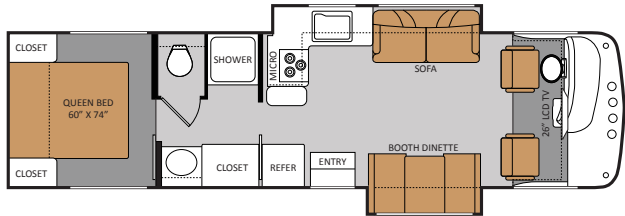
30Q



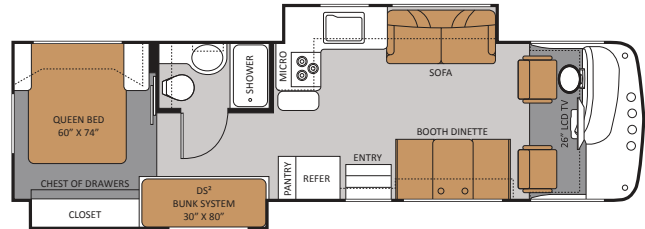
31J



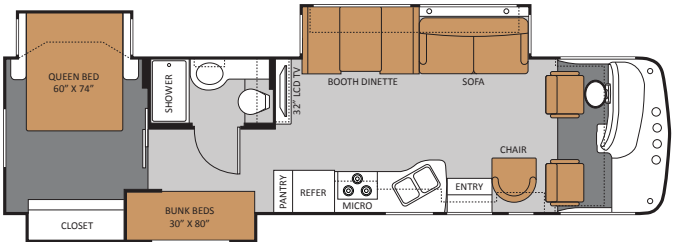
32A



32D



33G



34T

IMPORTANT - PLEASE READ: Information published within this brochure reflects product design, fabrication, material, components and specifications at the date of printing. If your vehicle was manufactured before this brochure was published this information may not be accurate because vehicles assembled before the brochure was published may not have the same design, fabrication, materials, components and specification as represented in the brochure. If your vehicle was manufactured after this sales brochure was published the representations may not be accurate because, for product improvement reasons, we reserve the unilateral right, at any time, without prior notice, to make changes in product design, material, components and specifications. The date the brochure was published [i.e. "Julian date"] is set forth on the last page of the brochure. IF CERTAIN INFORMATION PUBLISHED WITHIN THIS BROCHURE IS SIGNIFICANT TO YOUR PURCHASING DECISION, PLEASE CONSULT WITH YOUR SELLING DEALERSHIP TO CONFIRM THAT THE INFORMATION IS ACCURATE WITH RESPECT TO THE VEHICLE YOU ARE CONSIDERING PURCHASING. Photographs in the brochure may depict optional equipment or may only be available in certain floor plans. We reserve the right to make changes in prices and models and to discontinue models without notice or obligation. Components, appliances and the chassis may have been manufactured in a calendar year before the vehicle's designated model year. All capacities are approximate. The actual length of the vehicle may differ from that indicated in the brochure due to variances in the manufacturing processes and/or installed components. All dry weights are based on standard model features and do not include optional features or equipment. Components, appliances and features may differ to conform to local codes. Due to EPA environmental restrictions, engine power and torque ratings may change during any model year. The Thor Motor Coach logo and its design are registered trademarks. Other products and company names are trademarks and/or registered trademarks of their respective manufacturer. While the color of the motorhome's exterior and the interior fabrics depicted in this brochure are fair and reasonable depictions, the colors depicted may not be exact match of the actual colors because of variances in photo processing and printing. Component part and appliance manufacturers issue limited warranties covering portions of the vehicle not covered under the limited warranty we issue. To learn specific details regarding warranty coverage please consult your selling dealership or review the warranty packet inside the vehicle.

| MODEL | 29X | 30Q | 31J | 32A | 32D | 33G | 34T |
|---|---------|---------|---------|---------|---------|------------|------------|
| Chassis | Ford | Ford | Ford | Ford | Ford | Ford | Ford |
| Gross Vehicle Weight Rating (GVWR) | 18,000 | 16,000 | 18,000 | 18,000 | 18,000 | 18,000 | 22,000 |
| Gross Combined Weight Rating (GCWR) | 26,000 | 26,000 | 26,000 | 26,000 | 26,000 | 26,000 | 26,000 |
| Wheel Base | 190" | 190" | 208" | 208" | 208" | 208" | 228" |
| Exterior Length (without ladder) | 30'-10" | 31'-11" | 32'-8" | 33' | 33'-4" | 33'-4" | 35'-5" |
| Exterior Height (with air conditioning) | 11'-7" | 11'-7" | 11'-7" | 11'-7" | 11'-7" | 11'-7" | 11'-7" |
| Exterior Width (without mirrors) | 99" | 99" | 99" | 99" | 99" | 99" | 99" |
| Interior Height | 80" | 80" | 80" | 80" | 80" | 80" | 80" |
| Awning Size (manual/electric) | 16'/14' | 16'/16' | 16'/16' | 18'/18' | 16'/16' | 12'/11'-6" | 14'-6"/14' |
| Fuel (gallons) | 80 | 80 | 80 | 80 | 80 | 80 | 80 |
| LPG (pounds) | 88 | 88 | 88 | 88 | 88 | 88 | 88 |
| Fresh Water (gallons) | 50 | 50 | 50 | 50 | 50 | 50 | 49 |
| Grey Water (gallons) | 44 | 44 | 44R/22F | 44 | 44 | 44 | 44 |
| Waste Water (gallons) | 32 | 32 | 44 | 32 | 32 | 44 | 32 |
| Water Heater (gallons) | 6 | 6 | 6 | 6 | 6 | 6 | 6 |
| Furnace (BTUs) | 35,000 | 35,000 | 35,000 | 35,000 | 35,000 | 35,000 | 35,000 |
| Exterior Storage Capacity (cubic feet) | 62.3 | 128.6 | 125 | 80.4 | 134 | 63 | 55.9 |



GLAZED CHERRY



GLAZED MAPLE

STANDARD FEATURES AND OPTIONS

CONSTRUCTION & EXTERIOR

- One-Piece Fiberglass Front & Rear Caps
- Slick Fiberglass Exterior Sidewalls
- Exterior Graphics Package
- Rear Mega Storage Compartment (N/A 33G & 34T)
- Seamless Roto-Cast Storage Compartments
- Side Hinged Flush Mount Radius Luggage Doors (In Select Areas)
- Manual Patio Awning
- Roof Ladder
- Rubber Tread Entry Steps
- Automatic Electric Entry Step

CONSTRUCTION & EXTERIOR OPTIONS

- Full Body Paint Package
- Exterior Graphics with Partial Paint Package
- Fully Automatic Hydraulic Leveling Jacks (STD 32A, 33G & 34T)
- Electric Patio Awning
- Outside Shower
- Dual Pane Windows

AUTOMOTIVE & COCKPIT

- AM/FM Dash Radio with CD Player, Weather Band Tuner & iPod/Sirius Satellite Ready
- Dash Fans
- Generator Start Switch
- Leatherette Driver & Passenger Captain's Chairs
- Deluxe Exterior Mirrors
- Fog Lights
- 19.5" Tires with Stainless Steel Wheel Liners
- 5,000 lbs Trailer Hitch with 7-way Connector

AUTOMOTIVE & COCKPIT OPTIONS

- Six-Way Power Driver Seat
- Back-up Camera with Audio
- Side Vision Camera System (Requires Back-up Camera with Audio)
- Heated/Remote Exterior Mirrors

INTERIOR

- Residential Linoleum (Galley, Living Room, Bath & Entry Way)
- Metal Entry Grab Handle
- 13,500 BTU Roof Air Conditioner (Front)
- Hardware with Oil Rubbed Bronze Finish

- Leatherette Euro-Recliner with Ottoman (29X, 32A & 34T Only)
- Fabric Jackknife Sofa (30Q Only)
- Fabric Hide-a-Bed Sofa (32A, 32D & 34T Only)
- Leatherette Sofa with Air Mattress (29X Only)
- Leatherette U-Shaped Dinette (31J & 32A Only)
- Booth Dinette with Built-in Cup Holders (N/A 29X, 31J & 32A)
- Night Shades

INTERIOR OPTIONS

- 13,500 BTU Roof Air Conditioner - Rear (Requires 5,500 kilowatt Generator)
- Leatherette Jackknife Sofa (30Q Only)
- Leatherette Hide-a-Bed Sofa with Air Mattress (STD 31J & 33G / N/A 30Q)
- Leatherette U-Shaped Dinette IPO Sofa (29X Only)

KITCHEN

- Double-Door Refrigerator
- 3-Burner High-Output Gas Cooktop with Oven
- Microwave Oven - 30" OTR
- Laminate Countertops
- Large Double Bowl Sink with Single Lever Kitchen Faucet
- Flip-up Countertop Extension (N/A 30Q, 31J, 34T)
- Roll-out Countertop Extension (34T Only)
- Pantry (29X, 31J, 32A & 34T Only)
- Full Extension Metal Drawer Guides

KITCHEN OPTIONS

- Solid Surface Kitchen Countertop
- Fantastic Fan

ENTERTAINMENT

- 32" LCD Television in Living Room (29X, 31J, 32A & 34T Only)
- 26" LCD TV in Front Overhead (30Q, 32D & 33G Only)
- Cable Television Prep
- HD/DSS Satellite Prep

ENTERTAINMENT OPTIONS

- 26" LCD Television in Front Overhead (STD 30Q, 32D, 33G / N/A 31J)
- 19" LCD Television in Bedroom

- Dual 13" LCD Televisions with DVD Player in Bunk Beds (33G & 34T Only)
- Home Theater System with DVD Player & Radio Tuner

BEDROOM & BATHROOM

- Queen Bed with Fiber Mattress
- Bedspread & Pillow Shams
- Bunk Beds in Hallway Slideout (33G & 34T Only)
- China Bowl Toilet
- Shower with Glass Door

BEDROOM & BATHROOM OPTIONS

- Electric Overhead Hide-Away Bunk (31J & 32A Only)

SAFETY & CONVENIENCE

- Entry Door with Deadbolt Lock
- Systems Control Center
- Smoke, LPG & Carbon Monoxide Detectors
- Fire Extinguisher

SAFETY & CONVENIENCE OPTIONS

- Valve Stem Extenders on Rear Tires

ELECTRICAL & PLUMBING

- Onan RV QG 4000 Gas Generator
- Battery Disconnect Switch
- Emergency Start Switch
- 30-amp Service with Marine Type Detachable Power Cord
- 6-gallon Gas Water Heater
- Water Heater Bypass System

ELECTRICAL & PLUMBING OPTIONS

- Onan RV QG 5500 Gas Generator with 50-amp Service & 6-gallon Gas/Electric Water Heater
- Second Auxiliary Battery
- Holding Tanks with Heat Pads



WINDSPORT



SCAN THE QR CODE WITH YOUR SMART PHONE

YOUR LOCAL TMC DEALER:



Go RVing.

P.O. BOX 1486 • ELKHART, IN 46515 • CUSTOMER SERVICE: 877-855-2867 • SALES DEPARTMENT: 800-860-5658 • WINDSPORT-RV.COM

