

CHARLESTON

TRAVEL SMART







WELCOME TO THE CHARLESTON TAG AXLE.

This spacious Charleston 430 BH features our stately Executive Cherry cabinetry, one of two custom crafted hardwood interiors to choose from. Each one offers beautiful Corian countertops, elegant lighting and upgraded flooring.

Drive in comfort. Charleston's space-age ergonomically designed cockpit puts everything within arm's reach. A tilt/telescopic "Smart Wheel," upgraded stereo CD and rear view monitor with side view cameras are just some of the convenient features you'll find in the Charleston.

Luxurious appointments. Charleston's spacious living area surrounds you with all the comforts of home. Rich wood tones combined with warm fabrics and all the amenities of a gourmet kitchen. With Charleston you have everything you need for relaxing or entertaining.

Simply innovative. The Charleston's central water distribution system eliminates elbows throughout the water system and provides a direct line to fixtures with individual shut-off control.

Cavernous. Charleston's side opening exterior storage doors allow for greater accessibility and easy access to insulated, steel-cage protected cargo areas. Our above-floor slide-out system allows for increased storage space below.





SETTING NEW STANDARDS IN LUXURY.

Combining incredible style with expansive living space, the Charleston is in a class of it's own when it comes to style, amenities and innovation.

Room to bunk. The Charleston's bunk area is a great place for kids or guests to relax. The residential sliding doors provide extra privacy and each bunk comes with an optional flat screen TV.

Added storage. When not in use, the top bunk folds up and out of the way to create additional space for hanging clothes. And as with the bunk, the closet is hidden by residential folding doors.

Built for comfort. The Charleston's modern shower comes complete with a built in seat and a large skylight. Also shown is the convenient optional hidden combination washer/dryer.

An inviting retreat. The Charleston's double slide-out bedroom design offers abundant storage and a king bed option which is rarely rarely seen in a coach of this size.







CHARLESTON'S COMMITMENT TO QUALITY CONSTRUCTION.

It is both quality of construction materials and innovative engineering techniques that have set the Charleston apart from the competition. Charleston's extraordinary amount of strong, tubular steel is integrated with the chassis to form the basis of our uni-body, "steel cage" construction. With this ultra-strength steel skeleton as a foundation, Charleston's engineers have utilized superior vacuum-bond lamination processes that make our floor, sidewall and roof systems the strongest, most durable in the industry. By taking the time to integrate each structural component with both the chassis and each other, we are drastically improving the Charlestons' ability to take the wear and tear of road travel. This means that each Charleston is built to stand the test of time – from the inside out!

VACUUM-BOND LAMINATED ROOF SYSTEM

1. One-piece fiberglass crowned roof (seamless)
2. Luan Plywood
3. Structurally engineered block foam insulation
4. Luan plywood
5. Tubular aluminum framing with block foam insulation
6. Luan plywood
7. Foam padding
8. Vinyl interior headliner for easy maintenance

VACUUM-BOND LAMINATED FLOOR SYSTEM

9. Sturdy plywood flooring
10. 2.5" thick block foam insulation
11. 2.5" tubular steel floor framing
12. Luan plywood
13. Darco underbelly

LAMINATED STORAGE COMPARTMENT FLOOR

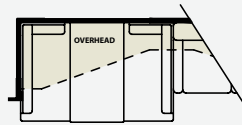
14. Darco steel underbelly
15. Oriented strand board decking
16. Cargo liner
17. Tubular steel framing

VACUUM-BOND LAMINATED SIDEWALLS

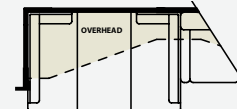
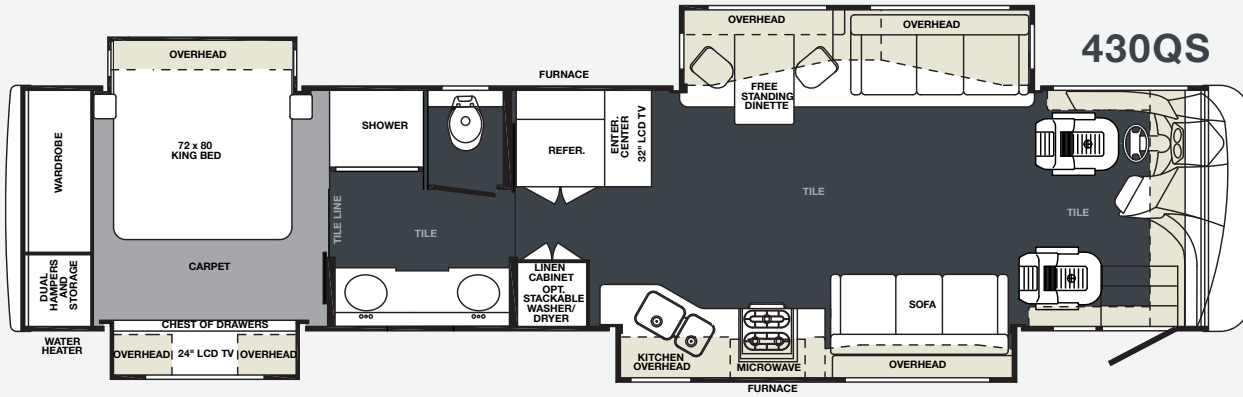
18. Gelcoat fiberglass exterior
19. Luan plywood
20. Thick block foam insulation
21. Tubular aluminum framing
22. Luan plywood
23. Decorative interior panels

ADDITIONAL FEATURES

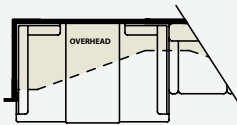
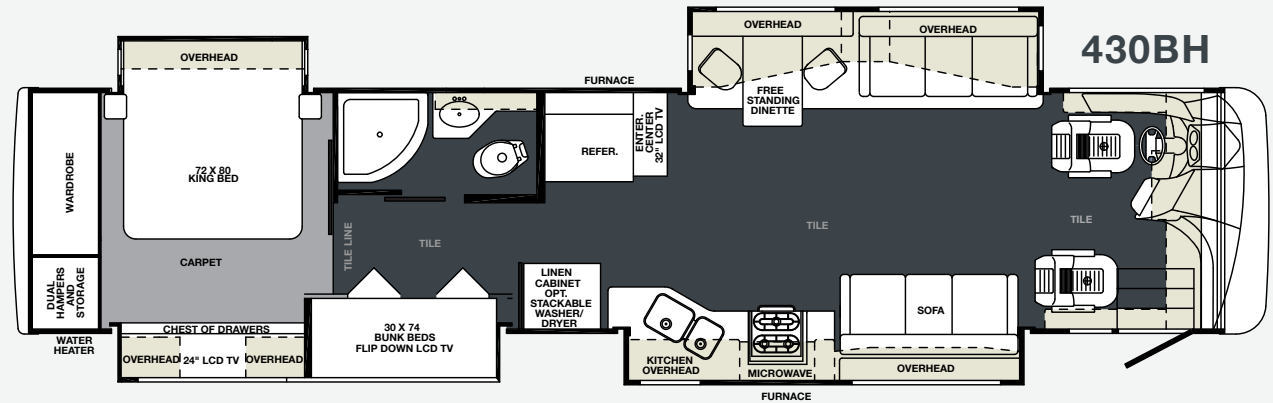
24. Residential carpeting
25. Thick foam padding
26. Bus-style, side-to-side opening storage compartment doors
27. Sleek automotive styling with automotive head lamps
28. 8.0K diesel generator on automated slide-tray
29. Automotive environmental controls
30. Panoramic windshield
31. Space-age cockpit design



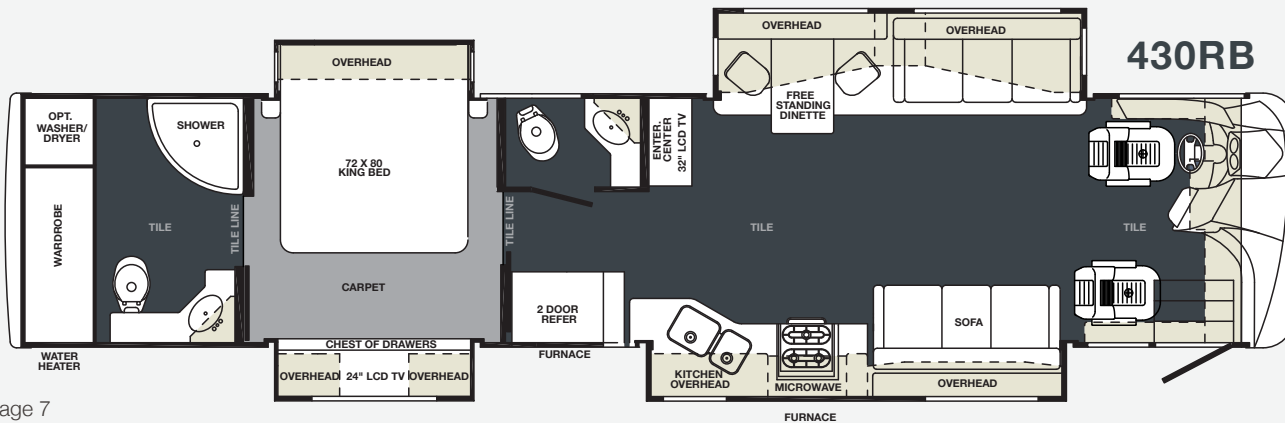
BOOTH DINETTE OPTION



BOOTH DINETTE OPTION



BOOTH DINETTE OPTION

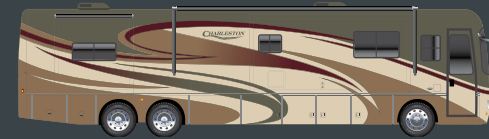


ENGINE	CUMMINS ISB TURBO DIESEL 450HP
TORQUE (FT. LB.)	1250
TRANSMISSION	ALLISON 3000MH
HITCH RATING (LBS.)	5,000
WHEELS	Polished Aluminum
FRONT GAWR (LBS.)	12,350
REAR GAWR (LBS.)	20,000
GVWR (LBS.)	42,350
GCWR (LBS.)	52,350
FUEL TANK (GAL)	100
DEF TANK (GAL)	13
TIRES	Michelin XZE 275/80R/22.5

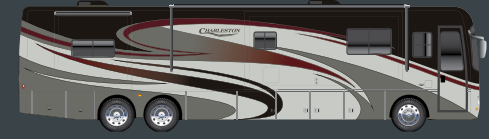
MODEL	430QS	430BH	430RB
*APPROX. OVERALL LENGTH	43'	43'	43'
OVERALL WIDTH	100"	100"	100"
**APPROX. HEIGHT	12' 2"	12' 2"	12' 2"
INTERIOR WIDTH	95' 5"	95' 5"	95' 5"
INTERIOR HEIGHT	84"	84"	84"
GREY TANK (GAL)	60	60	60
BLACK TANK (GAL)	44	44	44
FRESH WATER TANK (GAL)	86	86	86
LP (GAL)	24.5	24.5	24.5
FURNACE OUTPUT (BTU)	40,000	40,000	40,000
CONTINUOUS HOT WATER	Tankless	Tankless	Tankless
APPROX. EXT BASEMENT STORAGE (CU. FT.)	185.75	185.75	185.75
WHEELBASE	266"	266"	266"

*Approximate overall length shown w/o rear ladder. Add 6" with rear ladder.
 **Approximate overall height shown w/o satellite. Add 2" with satellite.

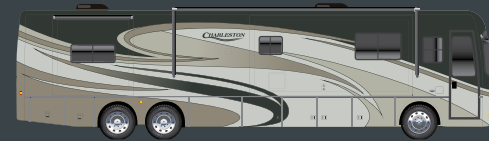
EXTERIOR OPTIONS



SCOTTSDALE



SOUTH BEACH



STERLING



NAPA



MIRAGE

INTERIOR OPTIONS

CREME

LIVING ROOM



BEDROOM



WOODLAND TAN

LIVING ROOM



BEDROOM

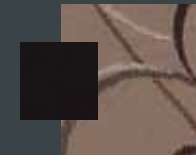


PEWTER

LIVING ROOM



BEDROOM



DUSK

LIVING ROOM



BEDROOM



*Complimentary colors may be used for dinette seating.



CHARLESTON STANDARDS AND OPTIONS

Chassis-Freightliner XC Raised

- Rail Chassis:** Standard Engine
 · Cummins ISL turbo diesel 8.9 liter
 450 HP @ 2100 RPM, 1250 ft. lbs.
 of torque @1,400 RPM

Brakes

- Full air w/auto slack adjuster
- ABS
- Two-Stage compression engine brake

Transmission

- Allison 3000MH 6 Speed automatic with electric push button shift
- Transynd transmission fluid

Suspension

- Neway air suspension front and rear
- Sachs custom tuned shock absorbers
- Heavy duty stabilizer bar
- 55 degree wheel cut
- "I" beam suspension with bell crank
- Air suspension deflation system

Tires

- Michelin XZE P275/80R/22.5

Wheels

- (6) Polished aluminum
- (2) Steel on inside rear axle
- 22.5 x 8.25

Cooling System

- Cross flow, rear mounted radiator
- Transmission oil cooler
- Electronic fan clutch
- 5 year/100,000 mile coolant (some maintenance required)

Steering Wheel

- Leather wrapped VIP smart wheel
- Washer/wiper with intermittent function
- Electronic cruise control with high idle
- FCC "Courtesy" flashers
- Telescopic/tilt steering wheel

Other Chassis Standards

- 100 gallon, dual fill fuel tank
- TRW tilt/telescopic steering column
- Suspended and adjustable pedals
- LCD engine message center
- Day time running lights
- 7-Pin tow power connector
- 18.7 CFM air compressor
- Farr Eco-air cleaner
- Air filter restriction indicator
- Fuel/water separator
- Heated air dryer
- Automatic, heated moisture ejectors
- Power steering
- Leece-Neville 160 amp alternator
- (2) 950 CCA @ 0° F, maintenance free batteries

Structural Standards

- Steel basement construction
- Automotive & foam seal undercoating
- Vacuum bonded floor
- Tubular steel frame
- Structure wood flooring
- 2 lb. density, block foam polystyrene insulation throughout
- Vacuum bonded sidewalls
- Tubular aluminum frame
- Gel-coated fiberglass skin
- Dual pane, dark tint windows
- Crowned and layered vacuum bonded roof
- Fiberglass roof
- Tubular aluminum frame
- Channeled drains for AC's
- Steel firewall
- Tubular steel front bulkhead
- Fiberglass front and rear caps

Exterior Standards

- One-piece panoramic windshield
- Full body (4) color paint layout with automotive paint
- Side-hinged exterior compartment doors with full pass through storage
- (4) pt. fully automatic hydraulic leveling system
- 2000 watt inverter/converter
- (4) Six volt house batteries on slide tray
- (2) Master electric shut off switches
- 50 Amp 120V distribution panel
- Automotive style fuse panel
- Individual zoned manifold system
- Variable speed constant pressure water pump
- All coach water filtration system (FO)
- (2) Thermostatically controlled Fantastic roof vents with rain sensors
- (1) 3 Speed remote powered lavatory roof vent
- 15,000 BTU low profile front roof A/C with heat pump and ceiling ducts with drain
- 13,500 BTU low profile rear roof A/C with heat pump and ceiling ducts with drain

View it outside. The optional exterior entertainment center in the sidewall is the perfect way to tailgate or simply watch the big game at your favorite destination.

Convenient access. The easy to use generator slide tray allows for easy access to the Charleston's power generator.

Secure it. The keyless entry (optional) and lighted entry assist handle provide convenience and comfort when entering your Charleston.

Easy to understand. Charleston's automotive style electrical station.

- Two (2) 20,000 BTU furnaces
- Tankless water heater with continuous flow
- 24.5 gallon propane tank
- Black water tank flush system
- Power entrance step
- Patio light
- Lighted entry assist handle
- Front entrance door with screen and deadbolt
- Power front door awning
- Power patio awning
- Slide-out room awnings
- Full length drip and awning rail
- 10,000 lb. receiver hitch
- Basement TV coax with 110V recept
- Air and "city mode" horns
- Heated power side view mirrors
- TV antenna with signal booster
- Shower skylight
- Docking lights
- Heated pads for all water and holding tanks
- Auxiliary LP hook up-passenger side
- Auxiliary air chuck-front firewall
- Remote power patio awning with spring kneeling and electronic wind sensor features
- Protective paint mask
- Full length mud flap with chrome trim
- (2) Piece rear ladder
- RV Sanicon with sewage macerator
- Color Side vision cameras
- Chrome exterior mirrors
- Automatic digital satellite

Exterior Options

- Slide-out storage tray in basement
- Exterior entertainment center in sidewall
- Basement freezer
- Power cord reel
- Keyless entry

Driver/Passenger Area Standards

- Wrap around cockpit with (9) gauge instrument cluster
- Extra wide Flexsteel pilot and co-pilot seats with adjustable arm rests, 360 degree swivel and recliner

- 6-Way power pedestal under pilot and co-pilot seats
- 3-point integrated seat belts
- High gloss porcelain tile
- Power actuated step well cover
- Lighted step well
- Rear vision camera with adjustable color monitor
- AM/FM/CD player with ipod™ auxiliary input
- Sirius satellite radio capable
- 32" color LCD/HD TV
- Home theatre surround sound with sub-woofer, and DVD player
- Distribution control box for entertainment electronics
- (2) Defroster fans with high and low settings
- Remote generator start switch
- Auxiliary start switch
- Pilot/co-pilot map lights
- Pilot/co-pilot cup holders
- Automotive dash AC/heater
- Electronic battery disconnect switch
- One-piece power privacy/sunscreen shade with dual controls
- Driver and passenger roller style shades
- Solid wood co-pilot console with 110 receptacle and pull-out laptop desktop
- Lighted entry assist handle at stepwell

Living/Dining/Galley Standards

- (4) interior décor choices
- Solid wood cabinetry throughout
- 84" ceiling height
- Free standing dinette with buffet
- Leather driver side sofa bed
- Leather love seat sofa
- Leather passenger side sofa (certain floor plans only)
- Brushed nickel cabinet hardware with hidden hinges
- Porcelain tile forward of bedroom
- Individual reading lights with dimmer
- Dimmer controlled LED lighting throughout
- Soft touch padded ceiling
- Roller style sun and blackout shades

- Metal blinds in galley window
- Solid surface counter tops throughout
- Solid surface residential, twin sink basins with solid surface covers
- Tiled backsplash
- Single lever faucet with spray head
- Convection/microwave oven
- Stainless steel refrigerator with icemaker
- Sealed 3-burner recessed cook top with solid surface cover
- Automatic generator start
- Full extension metal drawer guides with ball bearings throughout
- Central vacuum system
- Energy management system

Living/Dining/Galley Options

- Symphony Cherry/Executive Cherry wood options
- Booth dinette

Bath Area Standards

- Porcelain tile
- Solid surface sinks and countertops
- Double lever lavatory faucets
- One piece molded fiberglass shower with contoured glass door
- Porcelain hand flush toilet
- Mirrored medicine cabinets
- Towel bars
- Metal blinds in lavatory

Bedroom Area Standards

- 72"x 80" island king Bed with bedspread
- Bedside wardrobe
- Dresser drawers and wardrobe
- LED lighting
- Individual reading lights
- Washer/dryer prep
- Carpet with padding
- Night stands
- Egress window
- Cedar lined closet
- 26" color LCD/HD TV

Bedroom Area Options

- Stackable washer/dryer (430QS, 430BH)
- Combination washer/dryer (430RB)
- Dual control Select Comfort™ mattress

Safety Standards

- 110 GFI protected circuits (galley, bath and basement)
- Surface mounted fire extinguisher
- (2) exit windows (bedroom and livingroom)
- Carbon monoxide detector
- LP gas detector
- Smoke alarm

RV owners can now get real-time information about their RV, anytime from anywhere!

-  **RV Theft Alert**
-  **Real Time Location**
-  **Low Battery Alert**
-  **Trip Journals**

-  Uses GPS and wireless technology
-  Access from your PC or smart phone
-  No software to install
-  Simple to use
-  No obligation, no hidden fees

myRV | ID

**To learn more, please visit:
www.myrv-id.com**

Registration required to activate service.
© 2011 RV ID, Inc. All Rights Reserved. myRV | ID is a trademark of RV ID, Inc.



PRE-DELIVERY INSPECTION FACILITY

20,000 square feet of quality assurance. The bare essentials for a premium product. This state-of-the-art facility gives immediate daily feedback to production for quality assurance in every unit built.



Forest River, Inc. encourages our customers to purchase their Forest River products from a local dealership whenever possible for the following reasons:

- 1) Forest River, Inc. dealers are independently owned and operated businesses so priority service and scheduling is at their discretion and is often provided to customers that purchased their unit at that dealership.
- 2) Purchasing locally allows customers to establish meaningful relationships with a dealer, enhancing the RV experience through assistance with product questions, user tips or RV regulations for your state or country, and much more!
- 3) Canadian customers must meet requirements to bring an RV purchased out of the country to their home. These requirements may involve additional inspections and certifications, taxes and fees. Your local Canadian Dealer is a professional at meeting these requirements.
- 4) Scheduling timely warranty repairs and adjustments through a local dealership provides far greater flexibility and convenience to you, the customer!

It is the goal of Forest River, Inc. that all of our RV owners fully enjoy the RV experience and that customer satisfaction meets or exceeds their expectations!



Peace of mind.

Forest River has yet another exclusive feature to offer: One year of free roadside assistance will be given to every New Charleston customer. This is just one more way to say "Thank you" and to ensure an enjoyable traveling experience.



Learn More

Scan this barcode using a QR Reader on your smart phone to learn more about Forest River.



A Berkshire Hathaway company.

Forest River Charleston Division
1800 W. Hively Ave.
Elkhart, IN 46517
(574) 522-3693
www.forestriverinc.com/Charleston
www.forestriveraccessories.com

Your Charleston Dealer: