

# Sunstar

# WINNEBAGO<sup>TM</sup>



## Why Sunstar?

- Seven family-friendly floorplans
- LED ceiling lights (NA 26HE, 31KE)
- Private master bath and guest half bath (35B, 35F)
- MCD blackout roller shades
- Ultraleather™ swivel cab seats (Primera 26HE, 31KE)
- Corian® galley countertops (Laminate 26HE, 31KE)
- Master walk-around queen bed or available king bed (36Y)
- Available StudioLoft™





On the Cover: 35F Dark Spiral Gray Full-Body Paint

35F Inglewood with Coffee-Glazed Vienna Maple Cabinetry

## Your Style Awaits

There is a good reason Class A value seekers have set their sights on the Sunstar.® Among seven luxurious layouts to choose from, we have added the new triple-slideout 36Y featuring a unique galley design with residential refrigerator, two-tiered galley countertop, dining/buffet with HDTV, plentiful storage, and a walk-around queen bed or available king bed. The available StudioLoft™ drop-down bed provides

even more sleeping space for families on the go. As always, the Sunstar is competitively priced and packed with unexpected value, such as standard MCD blackout roller shades, a powered patio awning, and hydraulic leveling jacks. With so many options built to Winnebago's® legendary quality standards, there is a Sunstar that fits your lifestyle and your budget.



**Recognized Quality** The Recreation Vehicle Dealer Association annually rates RV manufacturers and awards the Quality Circle Award to manufacturers that provide exceptional products, service, and support. Winnebago is proud to be the only manufacturer that has received this award every year since its inception.



## Best in Class

See how Winnebago takes motorhome design and function to the next level, and why we've earned the right to be called the Most Recognized Name in Motorhomes.®



Click on this icon throughout the brochure to link to more information on the web.



The **Extendable Sectional Sofa** (35F) extends to maximize seating for movie nights and turns into a bed for a comfortable sleeping space for your guests.

Enjoy exceptionally comfortable dining in the available **BenchMark® Full Comfort Dinette** (NA 26HE, 31KE, 36Y) with its premium innerspring seating. It can easily convert into a convenient sleeping space, and the seats tilt up providing easy access to storage underneath.

Enjoy even more luxury with the **Interior Upgrade Package** (NA 26HE, 31KE) featuring a galley backsplash, flip-up countertop extension (NA 27N, 36Y), range cover, two sink covers, raised-panel refrigerator inserts (NA 36Y), and more.



The available **Dash Workstation** is the perfect place to plan the next leg of your trip (NA 26HE, 31KE).



Enhance your evenings with the available **Exterior Entertainment Center** with a 32" HDTV (27N, 35B, 35F, 36Y).



With seven floorplans and a large variety of available furniture combinations, the Sunstar lounge offers creative options for the perfect living area. You'll enjoy hosting guests or relaxing in the available Comfort Sofa Sleeper (27N, 30T, 35B) or Extendable Sectional Sofa (35F) while watching the HDTV. Conveniently control the lighting and privacy levels with the MCD solar/blackout roller shades and LED ceiling lights (NA 26HE, 31KE). The cab seats even swivel to face the lounge for additional seating.



35F Inglewood with Coffee-Glazed Vienna Maple Cabinetry



35F Electric Fireplace



35F Available BenchMark Full Comfort Dinette



35F MCD Solar/Blackout Roller Shades (Blackout 26HE, 31KE)





35F Galley

You'll enjoy spending quality time while cooking in this full-featured galley with upscale amenities such as a three-burner range, microwave oven, and a two-door refrigerator/freezer (available four-door refrigerator/freezer with icemaker 35B, 35F, 36Y). Elegant Corian® countertops (laminated in 26HE, 31KE) offer plenty of prep space, while drawers on full-extension slides provide additional storage space for your cooking supplies.



35F Microwave Oven with Range Fan



Full-Extension Drawer Slides



35F Refrigerator/Freezer with Raised Panel Inserts



There are seven different floorplans to choose from, and each master bedroom features a walk-around queen bed, while the new 36Y offers an available king bed. Whether you're looking for a spacious wardrobe (27N, 36Y, 35B), or additional cabinet space with an optional HDTV (27N, 30T, 35B, 35F), the Sunstar has the ideal layout for you. The 35B also comes with twin bunk beds so you can comfortably sleep up to seven people. The bedroom is equipped with a 110-volt outlet that is connected to a 2,000-watt inverter in the 36Y, or 1,000-watt inverter available on most models, allowing access to power when shoreline power is not available.



All bathrooms feature a textured glass shower door, laminate countertops, and an elegant skylight. The 35B and 35F feature a master bathroom complete with the BIG Shower, and the mid-coach bath in the 27N and 36Y has additional storage space as well.



35F Guest Half Bath



35F Bath



35F Shower





Dash

From the Rearview Monitor System to the simple controls for the standard hydraulic leveling jacks, this cab was designed for comfort and convenience. The cab seats feature fixed lumbar support with multi-adjustable slide and recline to keep you comfortable while driving or using the dash workstation (NA 26HE, 31KE). The available sideview cameras offer additional peace of mind (NA 26HE, 31KE).



Radio/Rearview Monitor System



Cab Wraparound Curtain



Automatic hydraulic leveling jacks, exterior paddle latches with dual-latching points, and a powered patio awning make for easy set up. Choose the available exterior entertainment center with a 32" HDTV (27N, 35B, 35F, 36Y) so you can enjoy movie nights in the great outdoors.



Powered Patio Awning



35F Available Exterior Entertainment Center (NA 26HE, 31KE)



35F Pass-Through Exterior Storage



Stylized Aluminum Wheels (35B, 35F, 36Y)



## Fiberglass Roof

The crowned, one-piece fiberglass roof is backed by a 10-year limited parts-and-labor roof skin warranty.

## Rubber Can't Cut It

Rubber roofs used by competitors can streak and degrade over time.

## Thermo-Panel<sup>®</sup> Sidewalls

By layering fiberglass and high-density block foam insulation with welded aluminum support structures, we create some of the industry's strongest, most durable and lightweight sidewalls.

## E-Coating

An electrodeposition coating helps protect critical steel components.

**Embedded Steel** Metal substructures embedded into the sidewall provide solid attachment points to keep cabinets and appliances mounted securely in place.

## Laser-Cut Tubing

Precision laser cutters create precision joints in structural steel that are stronger and require less welding.



## Interlocking Joints

Specially engineered interlocking joints connect the floor, sidewalls and roof where competitors often rely on simple screws to bear the weight.



**Solid Framework** Aluminum extruded in our own facility to our exacting standards creates an extremely strong and solid structural framework.

# SUPER STRUCTURE<sup>®</sup>

BUILT TO LAST

Every coach—from our smallest Class C to our largest diesel-pusher model—is built to Winnebago's<sup>®</sup> legendary SuperStructure<sup>®</sup> construction standards. It's a process developed and refined over more than 50 years of building some of the strongest, most durable coaches in the industry.



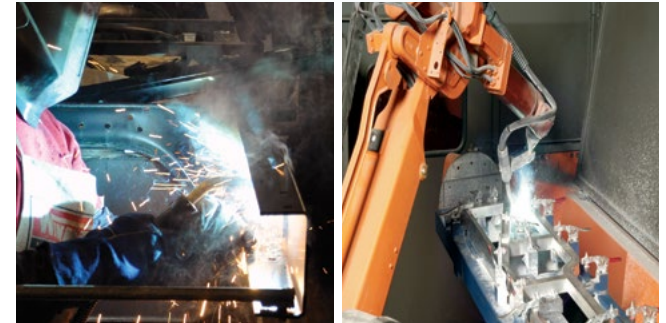
**TESTING** Before rolling out of our factories, every coach undergoes an extensive 113-point inspection. Each coach also passes a high-pressure water test that simulates rain at a rate of 50-inches per hour to check for leaks. During the design process, our computer simulations, physical testing center, and rigorous test track ensure each model is built to last.



**DETAILS** At Winnebago, we treat the features you can't see with the same care as the ones you can. Look in the access panels of some of our competitors' coaches and you'll see loose insulation and wires haphazardly strewn about. Winnebago maintains a clean fit and finish throughout so your coach will last for the long haul.



**BUILT IN-HOUSE** We extrude our own aluminum. We rotocast our own plastic components. In fact, we manufacture most of our own parts so they are designed to fit the space, rather than fitting the space to an awkward off-the-shelf component size.



**SUPER  
STRUCTURE**<sup>®</sup>  
BUILT TO LAST

Visit [BetterBuiltRVs.com](http://BetterBuiltRVs.com) to gain real insight into what goes into a Winnebago motorhome.

**TAKE A TOUR** We're proud of our processes, state-of-the-art facilities, and the people who make Winnebago number one. We invite you to visit our complex in Forest City, Iowa, for a firsthand look at the dedication and technology behind every motorhome we build.

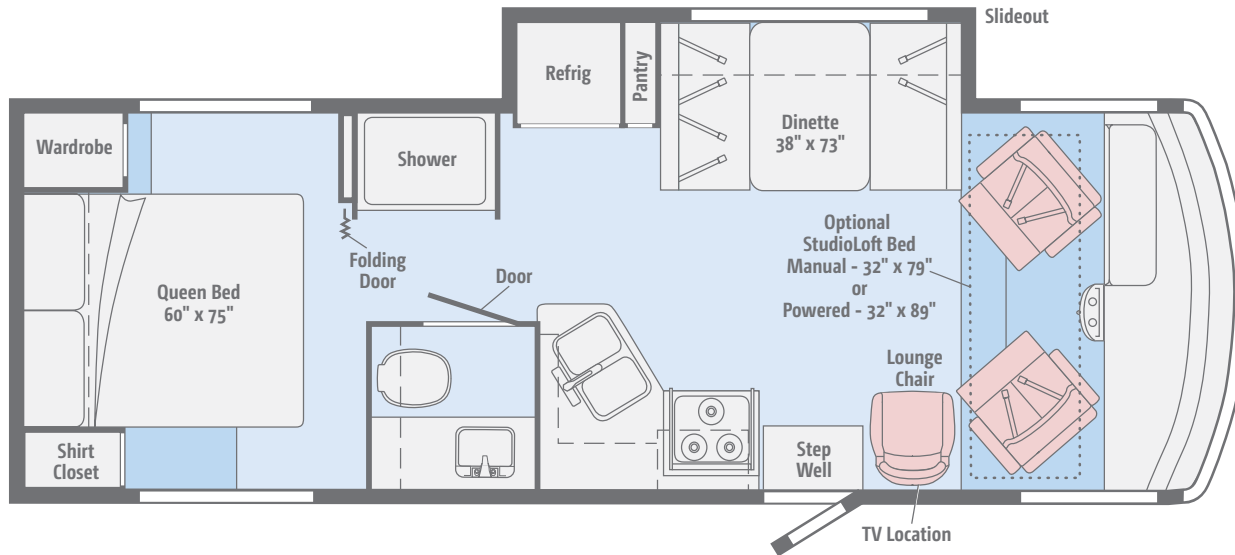
Call 641-585-6936 or 1-800-643-4892 or visit us online at [Winnebagolnd.com/company/visit](http://Winnebagolnd.com/company/visit) for more information.





## 26HE

With popular features such as swivel cab seats, a complete galley, and a walk-around queen bed, this is the ideal floorplan for any RV enthusiast.

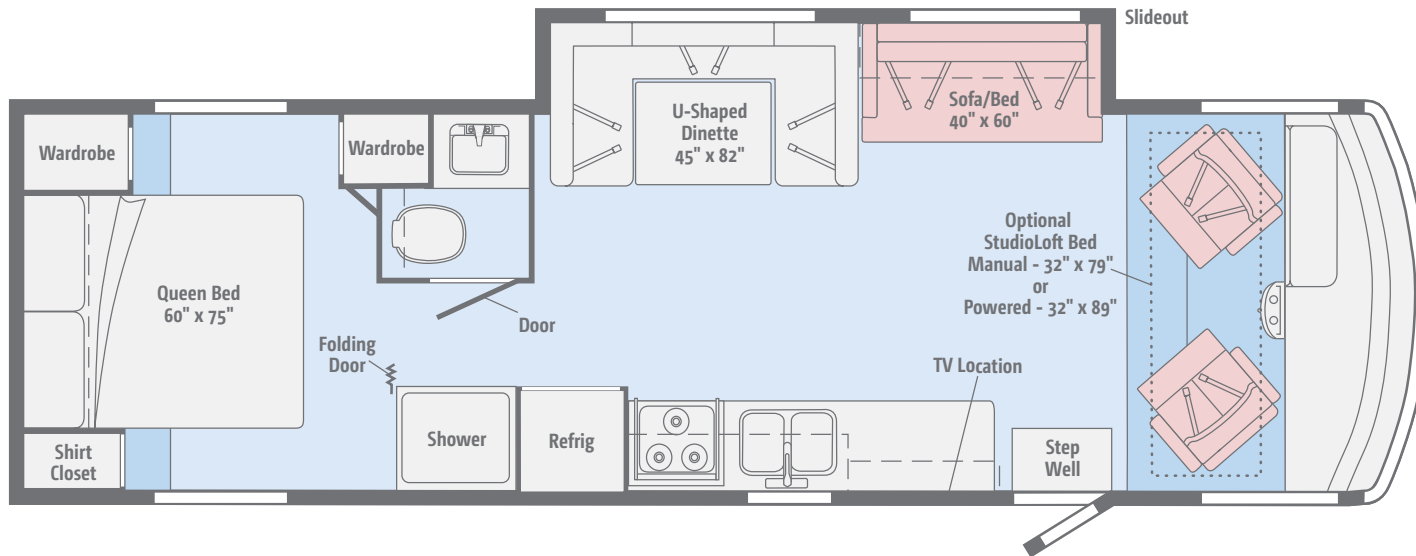


Dimensions shown are for sleeping space only and may vary due to styling differences. Dashed lines denote overhead storage areas. Floorplans and specifications are also available online at [Goltasca.com](http://Goltasca.com).



## 31KE

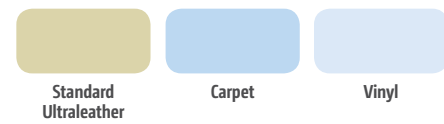
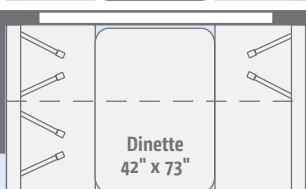
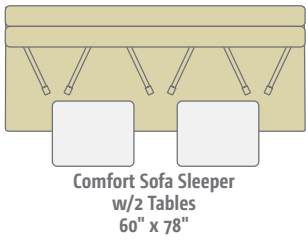
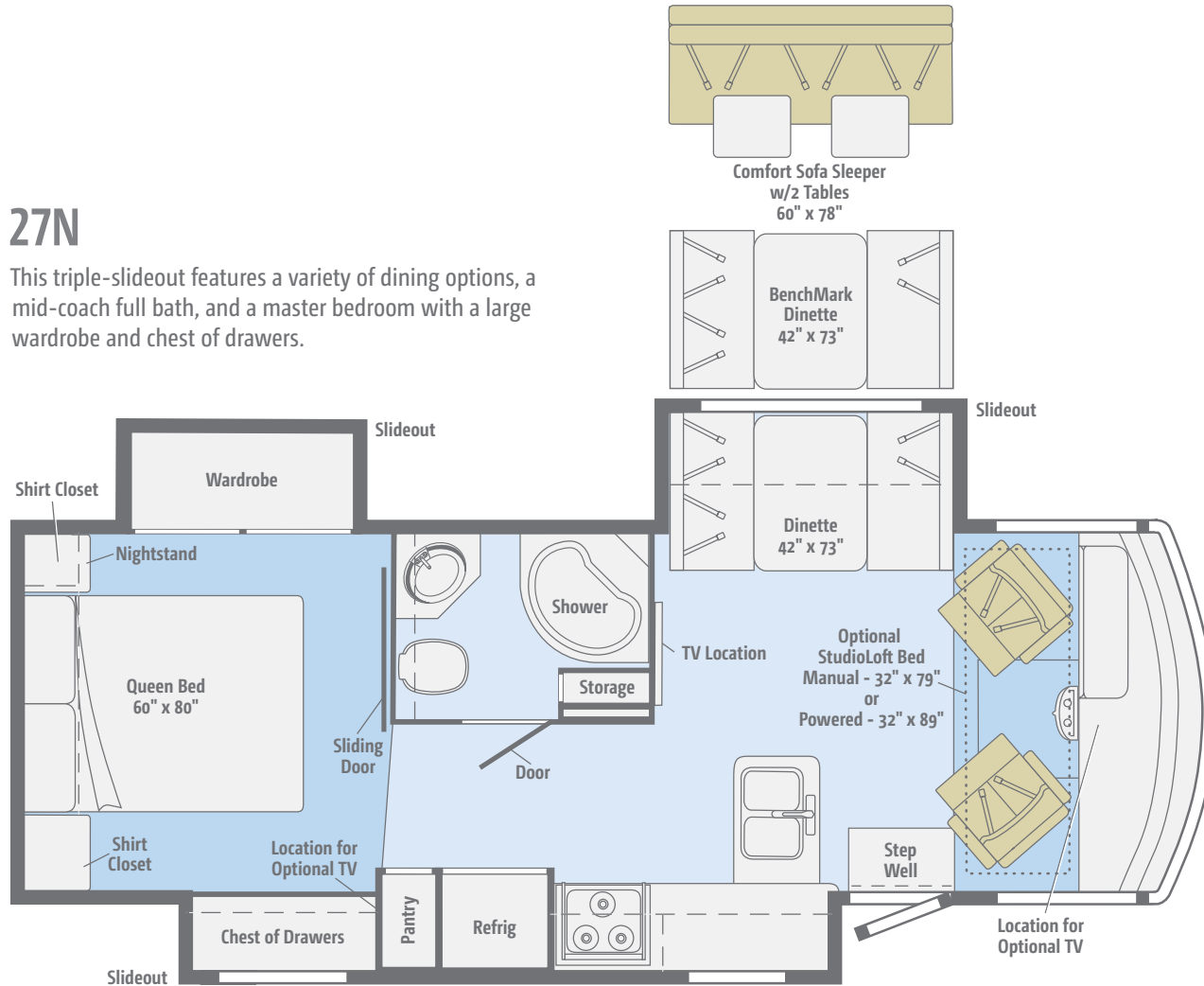
This impressive floorplan features desirable amenities such as a sofa/bed, U-shaped dinette, split bath, shirt closet and wardrobe, and a walk-around queen bed.





## 27N

This triple-slideout features a variety of dining options, a mid-coach full bath, and a master bedroom with a large wardrobe and chest of drawers.

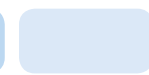
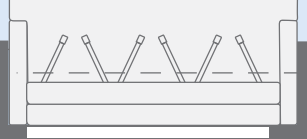
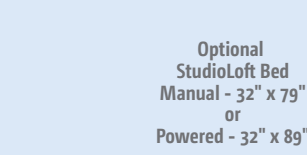
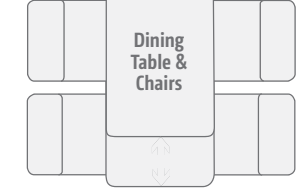


Dimensions shown are for sleeping space only and may vary due to styling differences. Dashed lines denote overhead storage areas. Floorplans and specifications are also available online at [Goltasca.com](http://Goltasca.com).



## 30T

With a variety of furniture choices, this versatile triple-slideout offers a mid-coach split bath, a walk-around queen bed, and twin wardrobes.



Standard Ultraleather

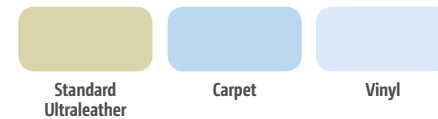
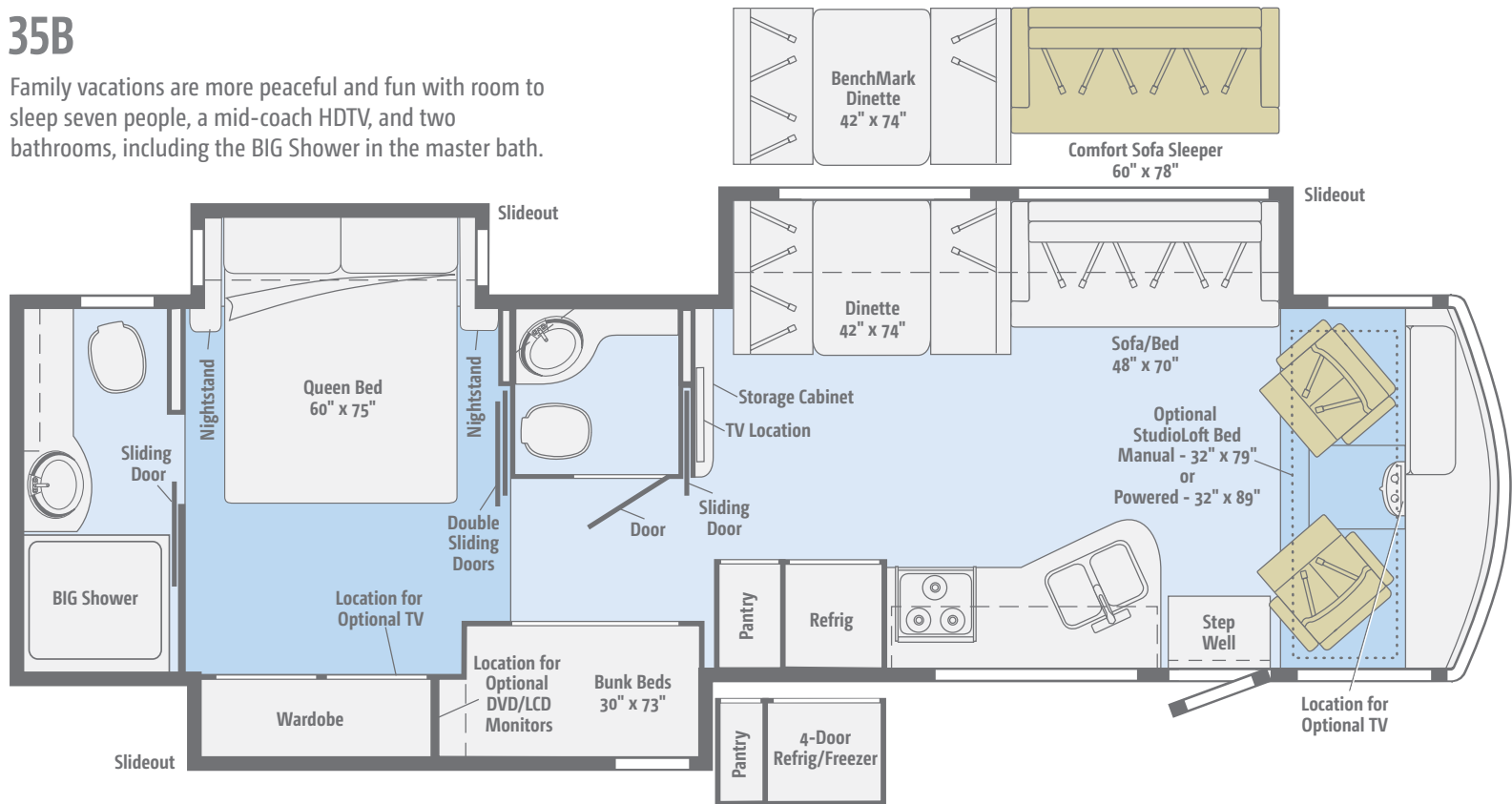
Carpet

Vinyl



## 35B

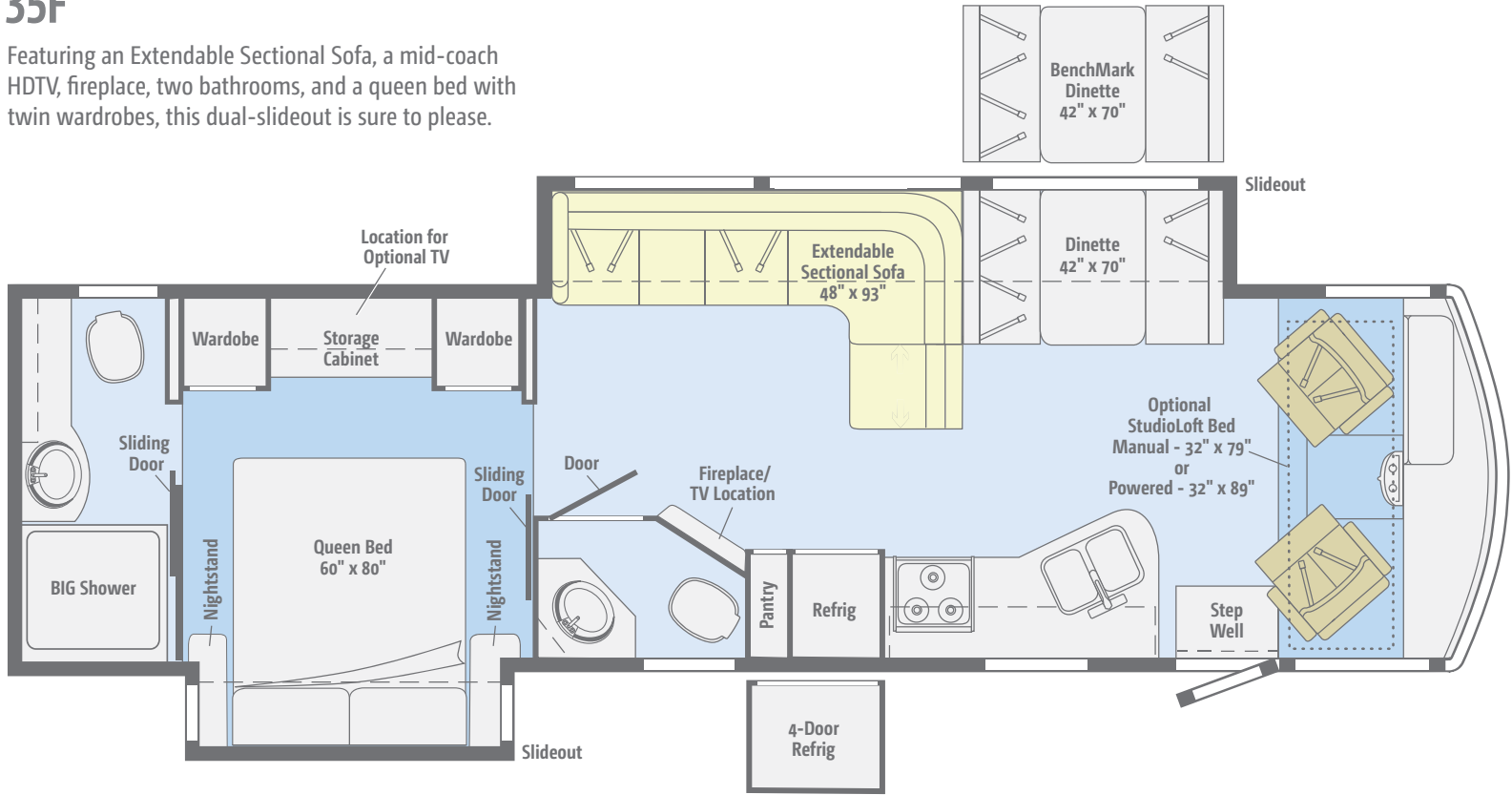
Family vacations are more peaceful and fun with room to sleep seven people, a mid-coach HDTV, and two bathrooms, including the BIG Shower in the master bath.



Dimensions shown are for sleeping space only and may vary due to styling differences. Dashed lines denote overhead storage areas. Floorplans and specifications are also available online at [Goltasca.com](http://Goltasca.com).

# 35F

Featuring an Extendable Sectional Sofa, a mid-coach HDTV, fireplace, two bathrooms, and a queen bed with twin wardrobes, this dual-slideout is sure to please.



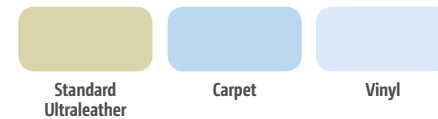
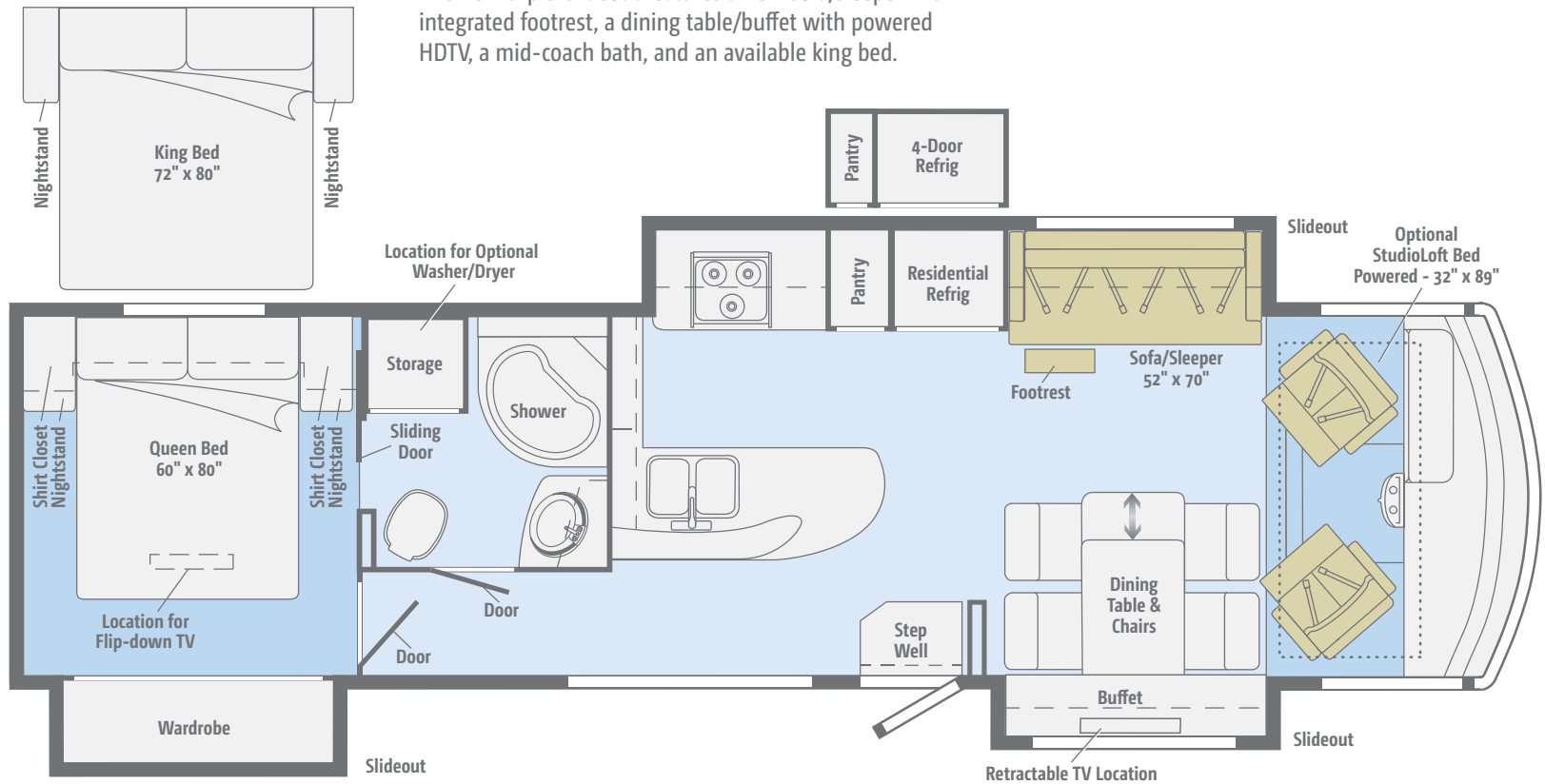
Standard Ultraleather	Optional Ultraleather	Carpet	Vinyl

Dimensions shown are for sleeping space only and may vary due to styling differences. Dashed lines denote overhead storage areas. Floorplans and specifications are also available online at [Goltasca.com](http://Goltasca.com).



## NEW 36Y

This new triple-slideout features a new sofa/sleeper with integrated footrest, a dining table/buffet with powered HDTV, a mid-coach bath, and an available king bed.



Dimensions shown are for sleeping space only and may vary due to styling differences. Dashed lines denote overhead storage areas. Floorplans and specifications are also available online at [Goltasca.com](http://Goltasca.com).

Choose from three fabric collections and three wood finishes.

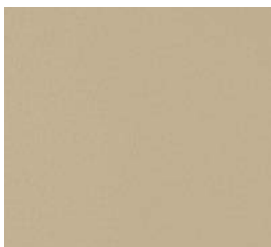
## Inglewood



Main



Ultraleather



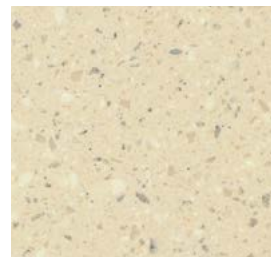
Primera  
(26HE, 31KE)



Accent



Bedspread



Corian Countertop  
(Galley)



HD Laminate Countertop  
(26HE, 31KE)



Wall Board



Carpet



Vinyl



Coffee-Glazed  
Vienna Maple  
(NA 26HE, 31KE)



Honey Cherry

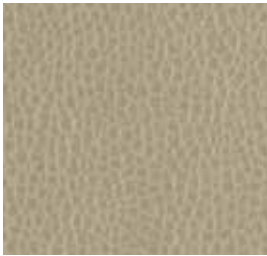


Choose from three fabric collections and three wood finishes.

## Brownstone



Main



Ultraleather



Primera  
(26HE, 31KE)



Accent



Bedspread



Corian Countertop  
(Galley)



HD Laminate Countertop  
(26HE, 31KE)



Wall Board



Carpet



Vinyl



Coffee-Glazed  
Vienna Maple  
(NA 26HE, 31KE)



Honey Cherry

*Winnebago® reserves the right to change décor materials and specifications without notice or obligation.*

Choose from three fabric collections and three wood finishes.

## Hudson



Main



Ultraleather



Primera  
(26HE, 31KE)



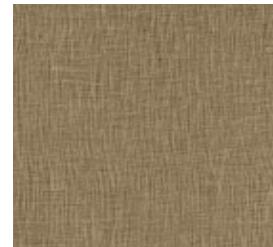
Accent



Bedspread



Corian Countertop  
(Galley)



HD Laminate Countertop  
(26HE, 31KE)



Wall Board



Carpet



Vinyl



Coffee-Glazed  
Vienna Maple  
(NA 26HE, 31KE)



Honey Cherry

*Winnebago® reserves the right to change décor materials and specifications without notice or obligation.*



The Sunstar comes with standard graphics or available full-body paint (NA 26HE, 31KE).



**Cobblestone**  
(26HE, 31KE)  
STANDARD GRAPHICS



**Champagne Gold**  
(NA 26HE, 31KE)  
STANDARD GRAPHICS

The Sunstar comes with standard graphics or available full-body paint (NA 26HE, 31KE).



**Cream**  
FULL-BODY PAINT



**Arctic Silver**  
FULL-BODY PAINT



The Sunstar comes with standard graphics or available full-body paint (NA 26HE, 31KE).



**Cayenne**  
FULL-BODY PAINT



**Dark Spiral Gray**  
FULL-BODY PAINT

## Weights & Measures

	26HE	31KE	27N	30T	35B	35F	36Y
Length	27'1"	31'3"	28'3"	31'	36'5"	35'5"	37'
Exterior Height <sup>1</sup>	12'2"	12'2"	12'2"	12'2"	12'5"	12'5"	12'5"
Exterior Width <sup>2</sup>	8'5.5"	8'5.5"	8'5.5"	8'5.5"	8'5.5"	8'5.5"	8'5.5"
Exterior Storage <sup>3</sup> (cu. ft.)	117	168	123	118	160	154	145
Awning Length	19'	17'	19'	17'	13'	16'	19'
Interior Height	6'8"	6'8"	6'8"	6'8"	6'8"	6'8"	6'8"
Interior Width	8'0.5"	8'0.5"	8'0.5"	8'0.5"	8'0.5"	8'0.5"	8'0.5"
Freshwater Tank Capacity <sup>4</sup> (gal.)	54	64	64	78	93	74	76
Water Heater Capacity (gal.)	6	6	6	6	6	6	10
Holding Tank Capacity - Black/Gray <sup>4</sup> (gal.)	43/38	41/57	43/53	41/42	41/46 & 41/51*	41/51 & 21/NA**	48/60
LP Capacity <sup>5</sup> (gal.)	18	18	18	18	18	18	18
Fuel Capacity (gal.)	80	80	80	80	80	80	80
GCWR <sup>6</sup> (lbs.)	23,000	23,000	23,000	23,000	26,000	26,000	26,000
GVWR (lbs.)	16,000	16,000	18,000	18,000	22,000	22,000	22,000
GAWR - Front (lbs.)	6,500	6,500	7,000	7,000	8,000	8,000	8,000
GAWR - Rear (lbs.)	11,000	11,000	12,000	12,000	15,000	15,000	15,000
Wheelbase	158"	190"	178"	190"	242"	228"	242"

\*The 35B uses separate black and gray tanks for each bathroom \*\*The 35F uses separate black tanks for each bathroom

## Ford® F53 Chassis

362-hp 3-valve Triton® V10 engine SEFI, TorqShift™ 5-speed automatic transmission w/tow/haul, 175-amp. alternator

Hydraulic brakes w/ABS

Trailer Hitch® 5,000-lb. drawbar/500-lb. maximum vertical tongue weight

7-pin connector

Stainless steel wheel liners w/19.5" tires (26HE, 31KE, 27N, 30T)

Stylized aluminum wheels w/22.5" tires (35B, 35F, 36Y)

Automatic hydraulic leveling jacks

## Optional Upgrade Package

**Interior Upgrade Package** (NA 26HE, 31KE) soft vinyl ceiling, galley backsplash, flip-up countertop extension (NA 27N, 36Y), Dream Dinette™ dining table (NA 36Y), range cover, two sink covers, raised-panel refrigerator inserts, (NA 36Y w/standard refrigerator/freezer) throw pillow(s)

## Cab Conveniences

**Radio/Rearview Monitor System** w/color camera, AM/FM stereo, CD player, 1-way audio, and LCD monitor (26HE, 31KE)

**Radio/Rearview Monitor System** w/color camera, 6" touch screen, handheld remote, and iPod®/MP3 input (NA 26HE, 31KE)

**Cab seats** adjustable armrests, fixed lumbar support, and multi-adjustable slide/recline/swivel

3-point seat belts

Chassis/house battery radio power switch

Power steering w/tilt wheel

Exterior power mirrors w/defrost

Cab wraparound curtain

Cruise control

12-volt powerpoints

Map light(s)

Sunvisors

Dash workstation w/USB and 12-volt powerpoint

## OPTIONAL EQUIPMENT

Sideview video camera system (NA 26HE, 31KE)

6-way power driver seat (NA 26HE, 31KE)

Passenger seat w/footrest (NA 26HE, 31KE)

Dual-speed defroster fans (NA 26HE, 31KE)

SiriusXM™ satellite radio receiver, remote, iPod interface cable/connector (subscription not included) (NA 26HE, 31KE)

## Interior

32" HDTV (26HE, 31KE, 30T)

39" HDTV (35F)

46" HDTV (27N, 35B)

Amplified digital TV antenna system

Dining table/buffet/chairs w/retractable 39" HDTV (36Y)

Satellite system ready (NA 26HE, 31KE)

MCD solar/blackout roller shades (lounge, dinette, bedroom) (MCD blackout roller shades 26HE, 31KE)

OnePlace® systems monitor

Powered ventilator fan (lounge, non-power 26HE, 31KE)

Powered ventilator roof vent (27N bedroom)

Powered roof vent (bath)

Tinted windows

Dual-pane windows (NA 26HE, 31KE)

LED lights (NA 26HE, 31KE)

Electric fireplace (35F)

Washer/dryer prep (36Y)

## OPTIONAL EQUIPMENT

StudioLoft™ (manual) (NA 36Y)

StudioLoft (powered w/ladder)

Dining table/buffet/chairs w/retractable 39" HDTV (30T)

32" HDTV (front) (27N, 35B)

48" HDTV (27N, 35B)

40" HDTV (35F)

Washer and dryer (36Y)

Vinyl flooring throughout (excludes cab and slideroom floor) (27N, 30T, 35B, 35F, 36Y)



## Galley

- Corian® countertops (NA 26HE, 31KE)
- Laminate countertops (26HE, 31KE)
- 2-door refrigerator/freezer (NA 36Y)
- Residential refrigerator/freezer w/ice maker (36Y)
- Microwave oven (26HE, 31KE, 30T)
- Microwave oven w/range fan (27N, 35B, 35F, 36Y)
- 3-burner range w/oven (26HE, 31KE)
- 3-burner range top w/storage below (27N, 30T, 35B, 35F, 36Y)

### OPTIONAL EQUIPMENT

- 3-burner range w/oven (27N, 30T, 35B, 35F, 36Y)
- Microwave/convection oven (30T)
- Microwave/convection oven w/range fan (27N, 35B, 35F, 36Y)
- 4-door refrigerator/freezer w/ice maker (35B, 35F, 36Y)

## Bath

- Laminate countertop
- Flexible showerhead
- Textured glass shower door
- Skylight
- Toilet w/foot pedal (26HE, 31KE)
- Porcelain toilet w/foot pedal and sprayer (NA 26HE, 31KE)

## Bedroom

- Queen bed w/storage below
- Bedsprad (26HE, 31KE)
- Bedsprad, pillows and shams (27N, 30T, 35B, 35F, 36Y)
- Headboard (NA 30T)
- Bunk beds w/foam mattresses, mattress covers, and privacy curtains (35B)
- 28" HDTV (36Y)
- Queen innerspring mattress (27N, 30T, 35B, 35F, 36Y)
- Queen foam mattress (26HE, 31KE)

### OPTIONAL EQUIPMENT

- 2 DVD players w/10.1" LCD monitors and headphones (35B bunk beds)
- 22" HDTV w/cable wall input (27N, 30T)
- 28" HDTV (35B)
- 32" HDTV (35F)
- King bed w/innerspring mattress, pillows and shams (36Y)

## Exterior

- Premium high-gloss sidewall skin
- Automatic entrance door steps
- Powered patio awning
- Front mud flaps
- Porch light
- LED lighted storage compartments (in select compartments)
- Ladder (NA 26HE, 31KE)

### OPTIONAL EQUIPMENT

- Lower front protective mask (w/full-body paint only)
- Entertainment Center AM/FM stereo, CD player, remote, AC duplex, DC receptacle, removable TV table, speakers and lockable compartment (30T)
- Entertainment Center 32" HDTV w/remote, AM/FM stereo w/DVD player w/remote, speakers (27N, 35B, 35F)
- Entertainment Center 32" HDTV w/remote (36Y)

## Heating & Cooling System

- 14,800 BTU air conditioner w/ChillGrille™ (26HE, 31KE, 27N, 30T)
- 2 high-efficiency air conditioners w/ChillGrille and Energy Management System (35B, 35F, 36Y)
- 30,000 BTU low-profile furnace (26HE, 31KE, 27N, 30T)
- 40,000 BTU low-profile furnace (35B, 35F, 36Y)

### OPTIONAL EQUIPMENT

- Air conditioner heat pump (27N, 30T)
- 2 high-efficiency air conditioner heat pumps (35B, 35F, 36Y)
- All-Weather Upgrade Package (30T) 5,500-watt Cummins Onan® Marquis Gold™ gas generator, 2nd high efficiency A/C with heat pumps, 50-amp. power cord, automatic changeover switch, shoreline/generator
- 2 deep-cycle Group 31 batteries w/4-door refrigerator/freezer w/ice maker (35B, 35F, 36Y)

## Electrical System

- AC/DC load center, 45-amp. converter/charger (26HE, 31KE, 27N, 30T)
- AC/DC electrical distribution system, 45-amp. converter/charger (35B, 35F)
- AC/DC electrical distribution system, 55-amp. converter/charger (36Y)
- 30-amp. power cord (26HE, 31KE, 27N, 30T)
- 50-amp. power cord, shoreline/generator automatic changeover switch (35B, 35F, 36Y)
- PowerLine® Energy Management System (27N, 35B, 35F, 36Y)
- 4,000-watt Cummins Onan MicroQuiet gas generator (26HE, 31KE, 27N, 30T)
- 5,500-watt Cummins Onan Marquis Gold™ gas generator (35B, 35F, 36Y)
- 2 deep-cycle Group 24 batteries (NA 36Y)
- 4 deep-cycle Group 31 batteries w/residential refrigerator (36Y)
- Battery disconnect system (chassis) (NA 26HE, 31KE)
- Battery disconnect system (coach)
- Automatic dual-battery charge control
- Auxiliary start circuit
- AC Duplex receptacle
- 2,000-watt AC/DC inverter w/remote panel (36Y)
- Cable TV input
- Portable satellite dish hookup, power cord
- Automatic generator start system (36Y)

### OPTIONAL EQUIPMENT

- 1,000-watt AC/DC inverter w/remote panel (NA 26HE, 31KE, 36Y)
- 2 deep-cycle Group 31 batteries w/4-door refrigerator/freezer w/ice maker (35B, 35F, 36Y)

## Plumbing System

- Service Center colored labels, pressurized city water hookup w/diverter valve, drainage valves, exterior wash station w/lighted pump switch (NA 26HE, 31KE), 10' sewer hose
- 6-gallon LP water heater w/electronic ignition (26HE, 31KE)
- 6-gallon 110-volt/LP water heater w/motoraid (27N, 30T, 35B, 35F)
- 10-gallon 110-volt/LP water heater w/motoraid (36Y)

- Heated holding tank compartment
- Permanent-mount LP tank w/gauge
- On-demand water pump
- TrueLevel™ holding tank monitoring system
- Winterization Package water heater bypass valve and siphon tube
- LPG accessory connection (patio area) (NA 26HE, 31KE)
- Gravity tank fill w/lockable door (NA 26HE, 31KE)
- Holding tank flushing system (black tank only) (NA 26HE, 31KE)

## Safety

- Child seat tether anchor (forward facing dinette seat) (NA 36Y)
- LP, smoke, and carbon monoxide detectors
- 10 BC fire extinguisher
- Ground fault interrupter
- High-mount brake lamp

## Warranty<sup>7</sup>

- 12-month/15,000-mile basic limited warranty<sup>8</sup>
- 36-month/36,000-mile limited warranty on structure<sup>8</sup>
- 10-year limited parts-and-labor warranty on roof skin<sup>8</sup>

- The height of each model is measured to the top of the tallest standard feature and is based on the curb weight of a typically equipped unit. The actual height of your vehicle may vary by several inches depending on chassis or equipment variations. Please check with your dealer for further information.
- The floorplans feature a wide-body design – over 96". In making your purchase decision, you should be aware that some states restrict access on some or all state roads to 96" in body width. Before making your purchase decision, you should confirm the road usage laws in the states of interest to you.
- The load capacity of your motorhome is designated by weight, not by volume, so you cannot necessarily use all available space when loading your motorhome.
- Capacities are based on measurements prior to tank installation. Slight capacity variations can result due to installation applications.
- Capacities shown are tank manufacturer's listed water capacity (WC). Actual filled LP capacity is 80% of listing due to overfilling prevention device on tank.
- Actual towing capacity is dependent on your particular loading and towing circumstances which includes the GVWR, GAWR, and GCWR as well as adequate trailer brakes. Please refer to the Operator's Manual of your vehicle for further towing information.
- See separate chassis warranty.
- See your dealer for complete warranty information.

NA Not Available

Not all items available in combination. See dealer for details.

Winnebago's® continuing program of product improvement makes specifications, equipment, model availability, and prices subject to change without notice. Published content reflects the most current product information at time of printing. Please consult your dealer for individual vehicle features and specifications.



Let us host your next

# Adventure

Over 20 Tours in 2015



WGOAdventures.com



Show your Winnebago love with high-quality gifts and wearables.



Apparel | Gifts | Parts | Gear

WinnebagoOutdoor.com

Find your style



Connect with Winnebago (Click one of the following)



Like us



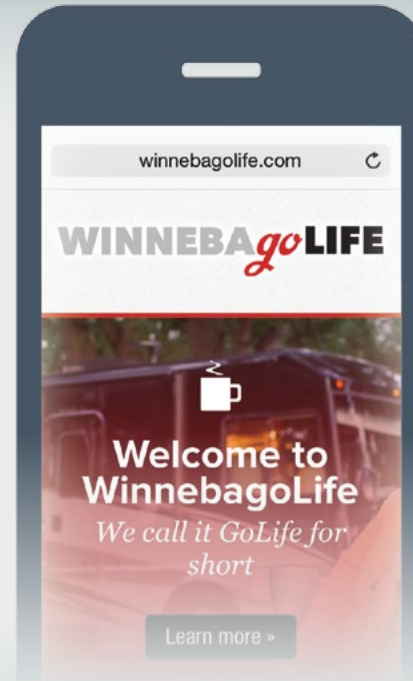
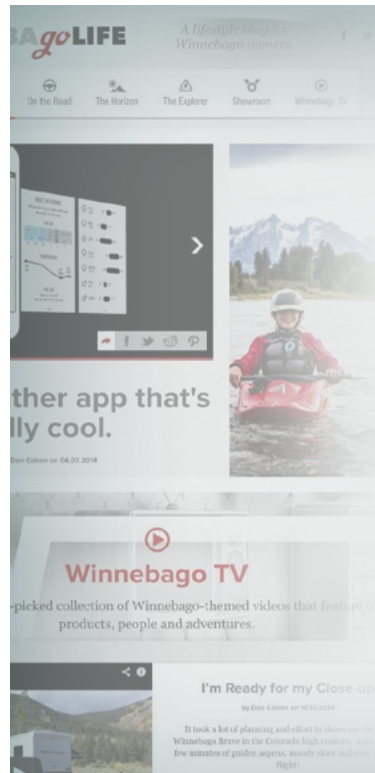
Follow us



Watch now

## WinnebagoInd.com Has All The Answers

Visit WinnebagoInd.com on your computer, smartphone, or tablet for the latest product information and updates.



## Welcome to GoLife!

Visit our lifestyle blog for motorhome news, personal travelogues, and community stories.

WinnebagoLife.com





LOOK BACK  
TELL YOUR STORY  
JOIN THE CREW



SEE HOW FAR WE'VE COME  
THINK A HOME  
ABOUT THE ARCHIVES

# WINNEBAGO HAS A STORY AND WHAT A STORY IT IS

## Looking Back



**Take a Drive Down Memory Lane**  
Our favorite history begins in the American heartland of Forest City, Iowa over 70 years ago. Here we have everything and building high quality, safe, lasting recreation vehicles. Here our story between the people.

## Tell us your story

The story of Winnebago is about the people who love our products and take their wild enthusiasm on the road. Now we want to hear from yours. Please, do tell. We promise we'll read every 50 story submissions will receive a Crew t-shirt. Added bonus: If your story is posted to the website, we'll send you a vintage-style Crew t-shirt. Read more about The Crew below.



WRITE YOUR STORY READ ALL ABOUT IT

## Join the Crew

**Show Your Pride**  
We're looking for a few good men and women on the road. Start here. We want everybody to join The Crew. If you love Winnebago products and want to be part of the fun, you're in. Submit your name and photo to become part of The Crew.



## See How Far We've Come



## Then & Now



**The Crew is Back**  
To the 1950s and The Crew was the beginning of a new era. Winnebago motorhomes with its iconic W and C logo. "Vintage" models in fact, are made in the original Forest City, Iowa with the original crew and tools.

SEE TRIBUTE SEE CREW

## Ads from the Archives



# VISIT:

MyWinnebagoStory.com

# PREFERRED CARE PROGRAM

We back our motorhomes with best-in-class support both before *and* after the sale:



- 12-month/15,000-mile basic limited warranty
- 36-month/36,000-mile limited warranty on structure
- 10-year limited parts-and-labor warranty on roof skin
- Complimentary 24-hour roadside assistance program
- TripSaver® Fast Track Parts guarantees that in-stock warranty parts ship directly to your dealer within 24 hours
- National dealer service network



For more information, visit us  
[WGOService.com](http://WGOService.com)



From RV to personal insurance, Winnebago RV Insurance can provide all the coverage and services you need to feel at home on the road.

For more information:  
**(800) 642-4892**



## CONTACT US

### GENERAL INQUIRIES

Corporate Switchboard  
(641) 585-3535

### CURRENT PRODUCT OWNER AND SERVICE-RELATED INQUIRIES

(800) 537-1885  
or [winnebagoind.com](mailto:winnebagoind.com)

### NEW VEHICLE SALES INQUIRIES

[sales@winnebagoind.com](mailto:sales@winnebagoind.com)

### FAX

(641) 585-6966

### POSTAL ADDRESS

Winnebago, Inc.  
P.O. Box 152  
Forest City, IA 50436

### STREET ADDRESS

Winnebago, Inc.  
605 West Crystal Lake Road  
Forest City, IA 50436

# WIT CLUB

## Join the Club, Join the Fun

Here's the perfect way to begin your life on the road as the owner of a new Winnebago – by joining the exclusive WIT Club. Start your adventure with other fun-loving WIT Club members from across the country and get the most out of your new Winnebago motorhome.



### Members enjoy:

- Caravans and rallies
- Newsletters
- Local and state group activities
- RV travel benefits

See more at  
[WITClub.com](http://WITClub.com)

©2015 Winnebago  
Seat belts are your most important hookup. Always buckle up.



## Grand National Rally

G'day mates! Explore the outback at this year's "Down Under" Grand National Rally. Each year, thousands of Winnebago owners descend upon the land down under – a.k.a. Forest City, Iowa.

Rally-goers enjoy an unforgettable week reconnecting with friends, taking tours, participating in activities, and more. Hop on down and join the adventure this July!

