

# Phaeton®





37 BH WITH AMBER GLAZED CABINETS AND OPAL INTERIOR



LIVING AREA

# DRIVE FIRST CLASS

From the moment you set foot in the 2019 Tiffin Phaeton, you'll understand why it has been a customer favorite for more than a decade. This coach is first class all the way. The Phaeton is incredibly luxurious, offering an abundance of upscale amenities as standard features. It's wonderfully spacious, with 7' ceilings and four slide-outs. Available in a multitude of floor plans, finishes, and upgrades, the Phaeton pampers you with an extraordinary level of comfort. For those who want to travel in style, this coach is for you.



BED/BATH



MASTER BEDROOM



## MASTER SUITE

A queen-sized memory foam mattress offers a restful landing place, or upgrade to a king-sized bed for more room. Entertainment is at the ready, with surround sound system, TV, and DVD player. Belongings are easily organized with a chest of drawers, laundry hamper, large closet, and under bed storage. Adjoining master bath assures complete privacy.



MASTER BATHROOM



MASTER BEDROOM STORAGE



Woodwork is created from solid hardwood by Red Bay master craftsmen. The multitude of cabinets, drawers, and closets adds up to more storage than many larger-sized models.

## MAIN COMPARTMENT

The welcoming living area invites relaxation, with upscale furnishings and tasteful neutral tones to complement your preferred décor. Six floor plans enable you to match the space to your lifestyle. Innovative engineering adds convenience by providing an electric command center that controls features throughout the coach. A TV Lift console that keeps the TV hidden when not in use is also available on select floor plans.



DINETTE



LIVING AREA



ENTERTAINMENT AREA

All interiors shown are 37 BH with Amber Glazed Cabinets and Opal Interior. To learn more about all of our décor and floor plan options, visit [tiffinmotorhomes.com](http://tiffinmotorhomes.com).



The cool brightness of LED lighting illuminates interiors, using a fraction of the energy of incandescent bulbs to preserve the coach's battery life.



KITCHEN COOKTOP AND GALLEY WINDOW

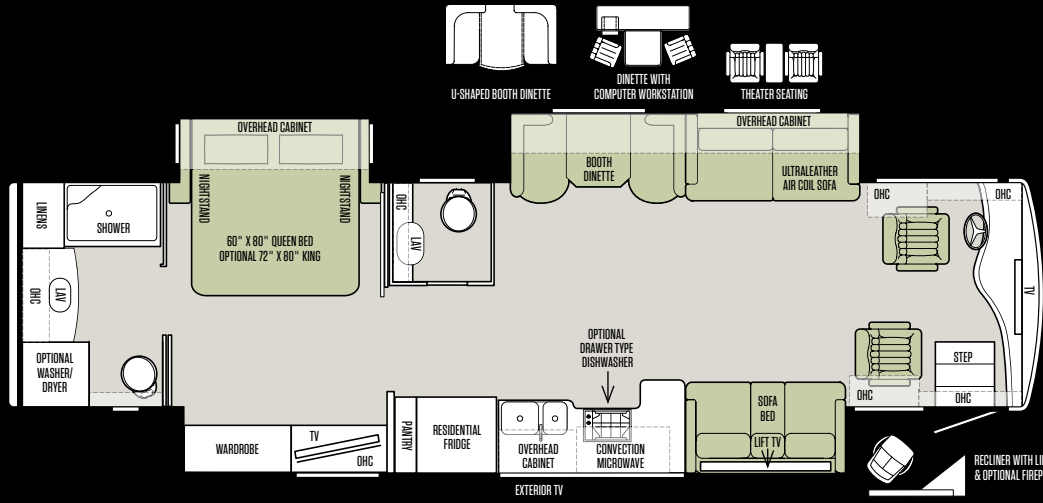


COCKPIT

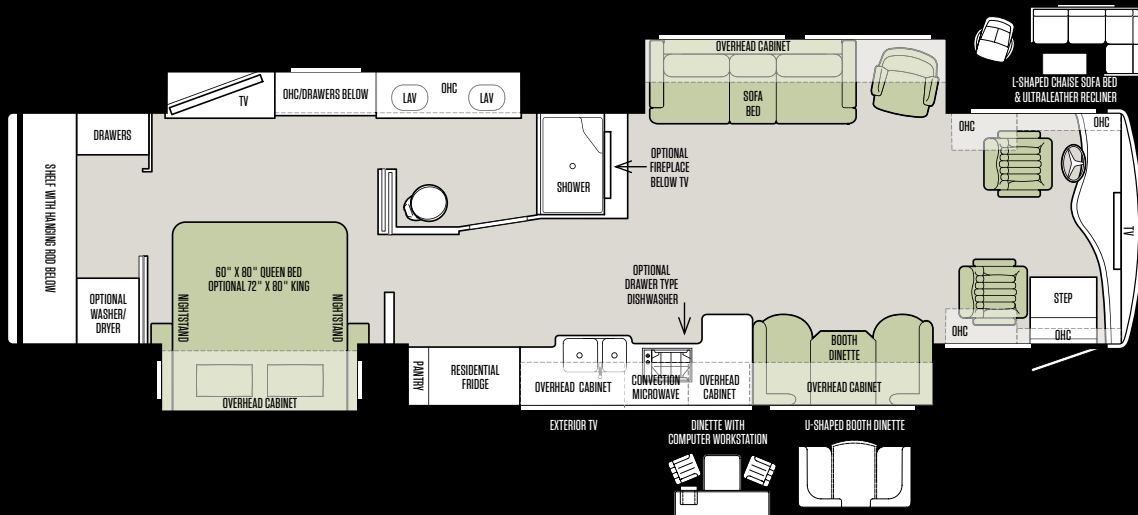


The design of every Tiffin floor plan must meet four essential criteria:  
 Maximum space. Optimal organization. Relaxation plus. Elegant atmosphere.  
 MORE plans offer your family the most comfortable layout for life on the road.

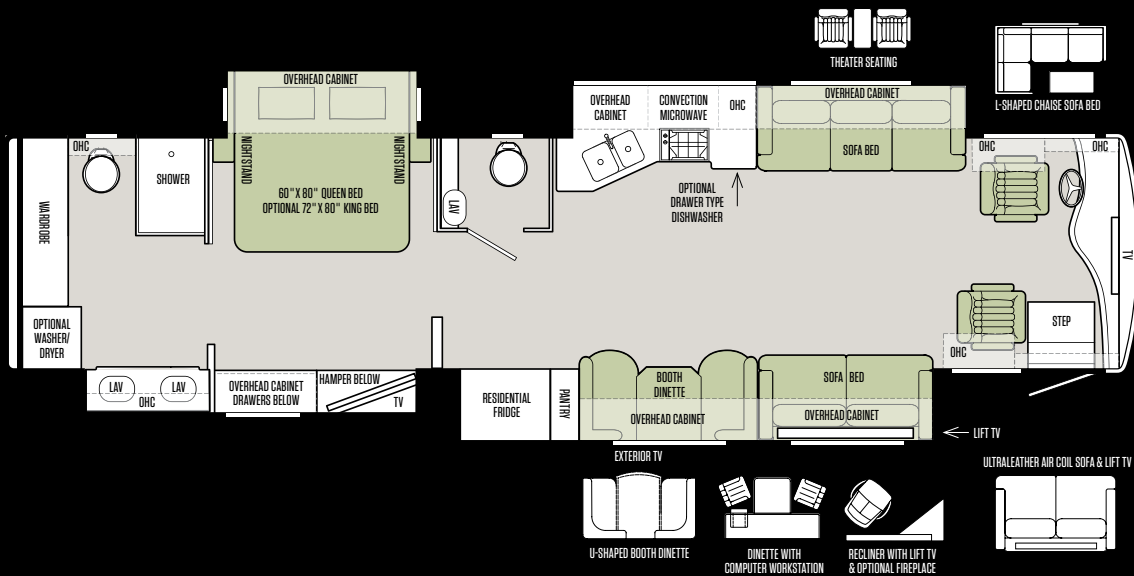
37 BH



40 AH

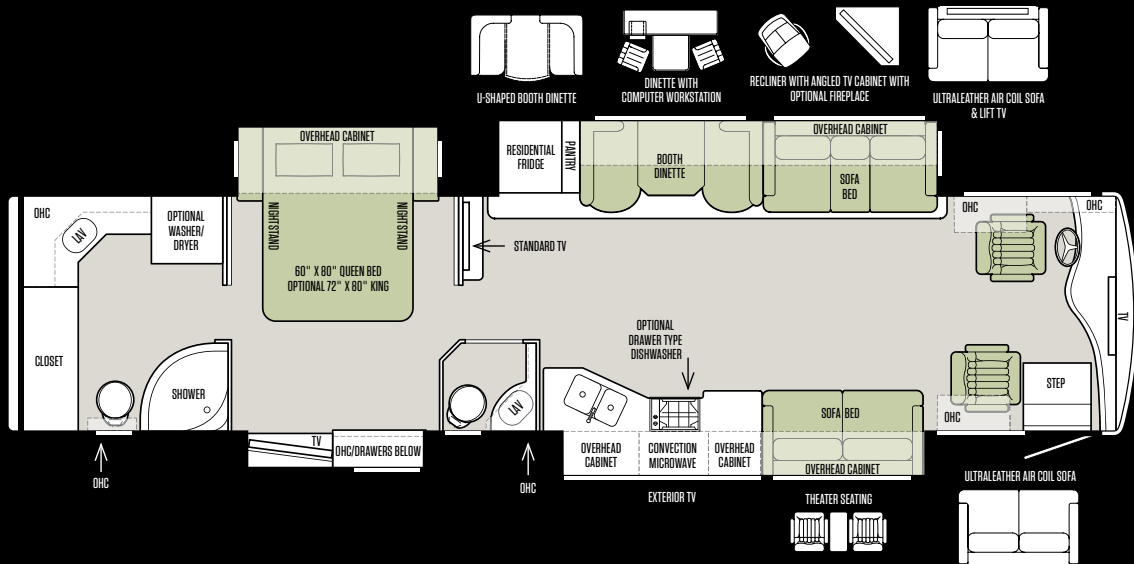


40 IH

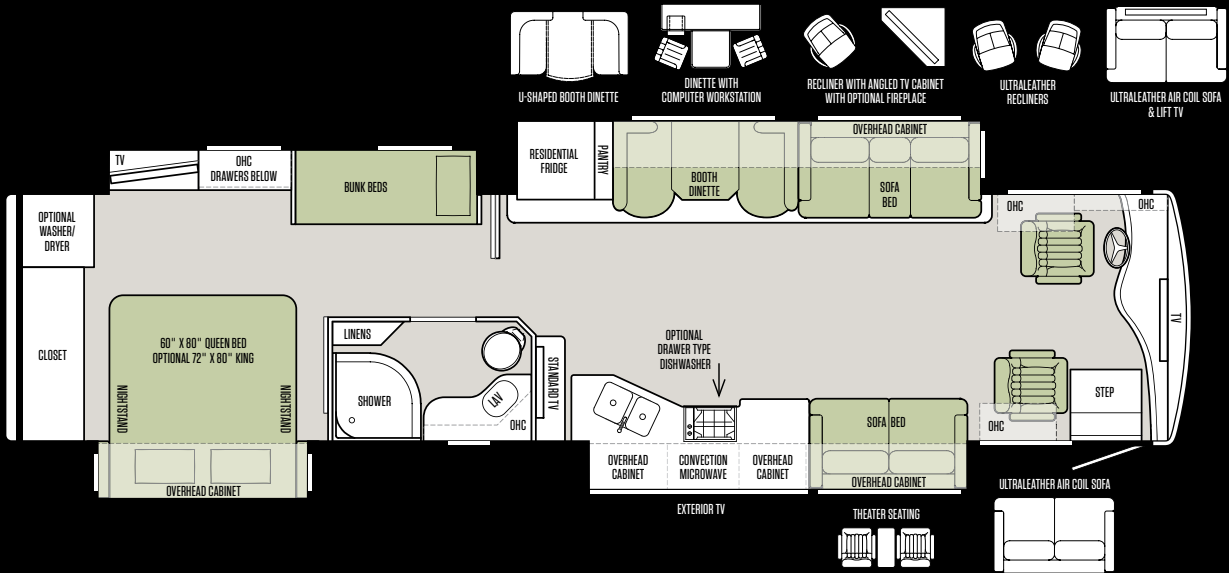




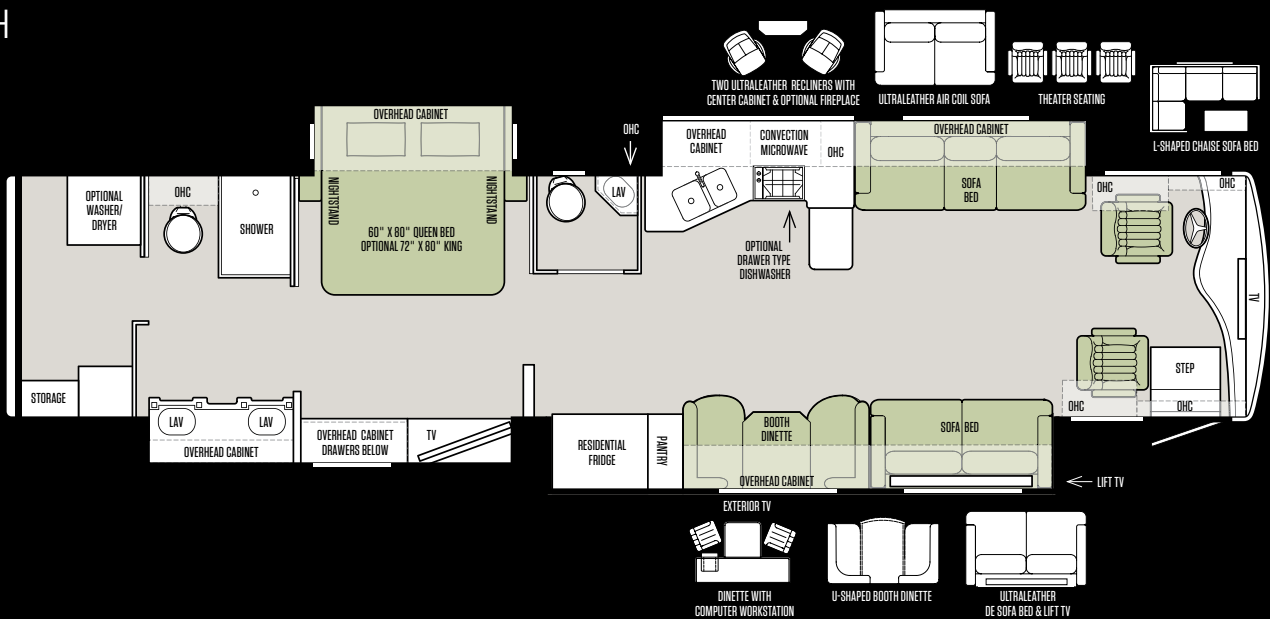
# 40 QBH



# 40 QKH



# 44 OH



If optional furniture combinations are selected, window locations may vary from diagram shown. All options may not be available in every model. Because of progressive improvements, specifications, standard and optional equipment are subject to change without notice or obligation. For a complete and up-to-date list of available options and specifications, visit [tiffinmotorhomes.com](http://tiffinmotorhomes.com).

## PREMIUM PAINT SYSTEM

Our eight-step full-body paint system features premium grade paints sealed with four layers of superclear coat with ultraviolet protection. An additional layer of scratch-resistant plastic coating protects the front of the coach, stairwell, and entry door lock.



EMERALD SPRUCE 2019



RUSTIC CANYON 2019



MAROON CORAL 2019



SUNLIT SAND 2019



NASA 2019



WHITE MAHOGANY 2019

To learn more about our premium paint system or for a complete and up-to-date list of available options and specifications, as well as information on Tiffin's full line of motorhomes, visit [tiffinmotorhomes.com](http://tiffinmotorhomes.com).

# INTERIOR DÉCOR

Make your experience on the road all your own. Express yourself by selecting one of our designer inspired décor packages consisting of your choice of cabinet finishes, flooring, and fabric textures. In the 2019 Phaeton, you'll be able to travel in style wherever you go.

## CABINETS



AMBER GLAZED

ENGLISH CHESTNUT

MOCHA

## FLOORING



POLISHED IVORY TILE

GLOSSY PORCELAIN WOOD FLOOR

## OPAL

### LIVING AREA



PILLOWS

VALANCE

### KITCHEN



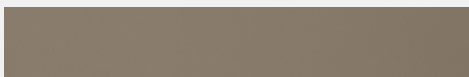
BACKSPLASH

COUNTERTOP

### ULTRALEATHER OPTIONS



CUMIN ULTRALEATHER



LIGHT COCOA ULTRALEATHER

### BEDROOM



## SIENNA

### LIVING AREA



PILLOWS

VALANCE

### KITCHEN



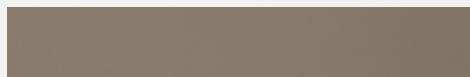
BACKSPLASH

COUNTERTOP

### ULTRALEATHER OPTIONS



CUMIN ULTRALEATHER



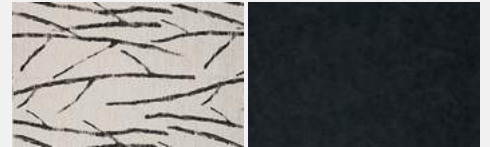
LIGHT COCOA ULTRALEATHER

### BEDROOM



## WOODLAND

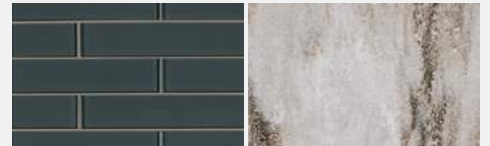
### LIVING AREA



PILLOWS

VALANCE

### KITCHEN



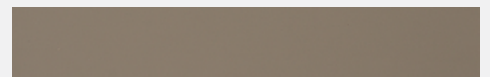
BACKSPLASH

COUNTERTOP

### ULTRALEATHER OPTIONS



CUMIN ULTRALEATHER



LIGHT COCOA ULTRALEATHER

### BEDROOM





## TIFFIN POWERGLIDE® CHASSIS

There's an art to engineering a motorhome, as elegantly demonstrated in the custom-built PowerGlide chassis. Reflecting decades of Tiffin innovation, the PowerGlide delivers everything an owner could wish for — durability, reliability, performance, and control.\*



### MULTIPLEX WIRING

Our multiplexed electrical system with auto reset fuses and relays uses less wiring and increases reliability, efficiency, and flexibility.

### DYNAMOMETER TESTING

Every Powerglide Chassis undergoes dynamometer testing, which simulates full power road testing. During the process, we assess engine performance, cooling system function, and instrumentation.

### CHASSIS WARRANTY

The PowerGlide Chassis carries a limited warranty backed by Tiffin: Three years or 50,000 miles against defects in materials and workmanship on the PowerGlide Chassis.

### EXTRA STORAGE

As a diesel pusher, the engine is at the rear of the coach. This chassis design opens up room for more under-coach storage and a more spacious driver's cab.

## 2019 SPECIFICATIONS



### AUTOMOTIVE

#### STANDARD ON ALL MODELS:

- Air Ride 4 Air Bags Up to 40', 6 Air Bags on Tag Axle Units
- Four Aluminum Wheels (6 with Tag Axle)
- Exhaust Brake on 380 HP Freightliner Chassis
- Compression Brake on all PowerGlide Chassis
- Adjustable Accelerator and Brake Pedals
- Allison 3000 MH 6-speed Automatic Transmission
- Air Brakes with Automatic Slack Adjusters and ABS
- Fog Lights
- Daytime Running Lights
- 18" Smart Wheel Steering Wheel
- Cruise Control
- Emergency Start Switch

### CHASSIS OPTIONS

CHASSIS OPTIONS:	37 BH	40 AH	40 IH	40 QBH	40 QKH	44 OH
Freightliner® Cummins ISL 380 HP/1150 lb Torque*	S	S	NA	S	S	NA
PowerGlide ISL 450 HP/1250 lb Torque with Independent Front Suspension	NA	NA	NA	NA	NA	S
PowerGlide ISL 380 HP/1150 lb Torque with Independent Front Suspension	NA	NA	S	NA	NA	NA
GVWR	38,320 lb	38,320 lb	39,600 lb	38,320 lb	38,320 lb	45,600 lb
GAWR — Front	14,320 lb	14,320 lb	15,600 lb	14,320 lb	14,320 lb	15,600 lb
GAWR — Rear	24,000 lb	24,000 lb	24,000 lb	24,000 lb	24,000 lb	20,000 lb
GAWR — Tag Axle	NA	NA	NA	NA	NA	10,000 lb
GCWR	48,320 lb	48,320 lb	49,600 lb	48,320 lb	48,320 lb	55,600 lb
Alternator Amps	160	160	210	160	160	210
Fuel Tank (Gallons) — Dual Fuel Fill	100	100	100	100	100	100
DEF Tank** (Gallons)	13	13	10	13	13	10

\* Only the Freightliner® warranty will apply.

\*\* Diesel Exhaust Fluid (DEF) is the active component used in Selective Catalytic Reduction (SCR) engines to reduce nitrogen oxide emissions by 90% to meet EPA standards.

### WEIGHTS AND MEASURES

OVERALL:	37 BH	40 AH	40 IH	40 QBH	40 QKH	44 OH
Overall Length (Approximate***)	38' 2"	41' 4"	41' 4"	41' 4"	41' 4"	45'
Overall Height with Roof Air (Maximum)	12' 7"	12' 7"	13' 2"	12' 7"	12' 7"	13' 2"
Interior Height	84"	84"	83"	84"	84"	83"
Overall Width***	101"	101"	101"	101"	101"	101"
Interior Width	96"	96"	96"	96"	96"	96"
Fresh Water (Gallons)	90	90	100	90	90	100
Black Water (Gallons)	50	50	55	50	50	55
Grey Water (Gallons)	66	66	100	66	66	100
LPG Tank (Gallons; can only be filled to 80% capacity)	35.7	35.7	35.7	35.7	35.7	All Electric
Basement Storage (Cubic Feet — Approximate)	122	157	232	157	157	253
Wheel Base	234"	266"	266"	266"	266"	310"
Tire Size	275/80R22.5	275/80R22.5	295/80R22.5	275/80R22.5	275/80R22.5	295/80R22.5
Minimum Garage Height	14'	14'	14'	14'	14'	14'
Hitch Rating****	10,000 lb	10,000 lb	10,000 lb	10,000 lb	10,000 lb	10,000 lb

\*\*\* The approximated coach width and length does not include side-view mirrors and rear ladders.

\*\*\*\* Maximum Trailer Weight is dependent on the loading and towing variables which includes the GVWR, GAWR, and GCWR, as well as adequate trailer brakes.

All options may not be available on every model. Because of progressive improvements, specifications, standard and optional equipment are subject to change without notice or obligation. For a complete and up-to-date list of available options and specifications, visit [tiffinmotorhomes.com](http://tiffinmotorhomes.com).

# 2019 SPECIFICATIONS

## EXTERIOR

### STANDARD ON ALL MODELS:

- Hydraulic Automatic Leveling Jacks
- Large Tinted One-piece Windshield
- Heated Power Mirrors with Integrated Cameras
- Single Motor Intermittent Wiper
- Lockable Swing-out Storage Doors with Gas Shocks
- Window Awning Package (2 Windows)
- Full-body Paint with Protective Film on Front Cap
- Remote Locking System for Entry Door
- Heated Water and Holding Tank Compartments
- Chrome Handles on Compartment Doors
- Deadbolt Front Entrance Door
- Double Electric Step
- Flush Mounted and Painted-frame Dual Pane Windows
- Exterior Patio LED Light
- Automatic Door Awning
- Metal-wrapped Automatic Patio Awning
- Motion Sensor Lighting for Exterior Storage
- 10.0 kw Onan® Manual Slide-out Generator
- Roof Ladder
- Electric Hose Reel
- Electric Power Cord Reel
- Fiberglass Front and Rear Caps
- Docking Lights
- Six 6 V House Batteries
- Black Tank Flush System
- Water Filter
- Custom Mud Flap
- Undercoating
- Dual Fuel Fills
- 110 V Exterior Receptacle
- Digital TV Antenna
- Back-up Camera
- Cable-ready TV Hook-up
- Gravity Water Fill
- 2000 Watt Inverter with 100 Amp Converter and Transfer Switching
- Air Horns
- Exterior Flat Panel TV (Includes Sound Bar)
- Solid Non-opening Window on Passenger Side

AVAILABLE OPTIONS:	37 BH	40 AH	40 IH	40 QBH	40 QKH	44 OH
One Storage Compartment Slide-out Tray	O	O	O	O	O	O
Two Storage Compartment Slide-out Trays	NA	O	O	O	O	O
In-motion Satellite Dish*	O	O	O	O	O	O
Pre-wired for Winegard® TRAV'LER	O	O	O	O	O	O
Winegard Connect™	O	O	O	O	O	O
Two Low Profile Roof ACs with Heat Pumps	S	NA	NA	NA	NA	NA
Three Low Profile Roof ACs	NA	S	S	S	S	S
Aqua-Hot™ and All Electric Unit	O	O	O	O	O	S
Vertical Slide Opening Window on Passenger Side	O	O	O	O	O	O
Prep for One or Two Solar Panels	O	O	O	O	O	O
Extended Cycle Batteries	O	O	O	O	O	O

\* High-definition programming is not available on a domed satellite antenna unless you subscribe to DISH Network®.

## INTERIOR

### STANDARD ON ALL MODELS:

- Soft Touch Vinyl Ceiling with Trey Ceiling in Living Area
- Treated Carpet in Slide-outs
- Two Ducted Furnaces
- Solid Wood Cabinet Fascias and Doors with Concealed Hinges
- Complete Cable Wiring (Interfacing with Surround Sound and Satellite System)
- Home Theater Sound System with Concealed Speakers (Living Room)
- DISH® Network Receiver (Requires Subscription)
- Solar and Privacy Shades
- LED Lighting
- Fantastic® Power Roof Vents
- Tank Level Monitor System
- Smoke Detector
- Electric Step Well Cover
- Wardrobe with Automatic Light
- House Battery Disconnect Switch
- Extraordinaire™ AC System
- Central Vacuum Cleaner

AVAILABLE OPTIONS:	37 BH	40 AH	40 IH	40 QBH	40 QKH	44 OH
<b>Cabinets</b>						
Amber Glazed Solid Cabinet Doors and Drawer Fronts	O	O	O	O	O	O
English Chestnut Solid Cabinet Doors and Drawer Fronts	O	O	O	O	O	O
Mocha Solid Cabinet Doors and Drawer Fronts	O	O	O	O	O	O
<b>Fabric Suites</b>						
Opal	O	O	O	O	O	O
Sienna	O	O	O	O	O	O
Woodland	O	O	O	O	O	O
<b>Leathers</b>						
Cumin Ultraleather	O	O	O	O	O	O
Light Cocoa Ultraleather	O	O	O	O	O	O
<b>Floor Tiles</b>						
Polished Ivory Tile Floor Throughout Coach	S	S	S	S	S	S
Glossy Porcelain Wood Floor	O	O	O	O	O	O
Stacked Washer/Dryer	O	O	O	O	O	O
Heated Tile Floor	O	O	O	O	O	O

## KITCHEN

### STANDARD ON ALL MODELS:

- Solid Surface Countertop with Stainless Steel Sink
- Solid Surface Sink Covers
- Expand-an-island
- Single Lever Sink Faucet with Sprayer
- Stainless Steel Microwave/Convection Oven
- Galley Splash Guards
- Stainless Steel Residential Refrigerator
- 3-burner Cooktop with Convection Microwave
- Panoramic Galley Window

AVAILABLE OPTIONS:	37 BH	40 AH	40 IH	40 QBH	40 QKH	44 OH
Dishwasher	O	O	O	O	O	O

Visit us on the web for more information on the 2019 Phaeton and all 2019 Tiffin Motorhomes, along with the latest product and specification updates at [tiffinmotorhomes.com](http://tiffinmotorhomes.com).

## LIVING AREA/DINETTE

AVAILABLE OPTIONS:	37 BH	40 AH	40 IH	40 QBH	40 QKH	44 OH
Ultraleather Booth Dinette/Sleeper on Passenger Side	NA	S	S	NA	NA	S
Ultraleather Air Coil Sofa on Driver Side	S	NA	O	S	S	O
Dinette with Computer Workstation on Passenger Side	NA	O	O	NA	NA	O
Ultraleather U-shaped Dinette (Non-sleeper) on Passenger Side	NA	O	O	NA	NA	O
Ultraleather DE Sofa/Bed on Passenger Side	NA	NA	NA	S	S	NA
Ultraleather Booth Dinette/Sleeper on Driver Side	S	NA	NA	S	S	NA
Ultraleather DE Sofa/Bed and Lift TV on Passenger Side	S	NA	O	NA	NA	O
Dinette with Computer Workstation on Driver Side	O	NA	NA	O	O	NA
Ultraleather U-shaped Dinette (Non-sleeper) on Driver Side	O	NA	NA	O	O	NA
Ultraleather Recliner and Lift TV on Passenger Side	O	NA	O	NA	NA	NA
Ultraleather Air Coil Sofa on Passenger Side	NA	NA	NA	O	O	NA
Two Ultraleather Recliners on Driver Side	NA	NA	NA	NA	O	NA
Ultraleather Recliner with Angled TV Cabinet on Driver Side	NA	NA	NA	O	O	NA
Ultraleather Air Coil Sofa and Lift TV on Passenger Side	NA	NA	O	NA	NA	S
Ultraleather L-shaped Sofa on Driver Side	NA	NA	O	NA	NA	O
Theatre Seating on Driver Side	O	NA	O	NA	NA	O
Two Ultraleather Recliners with Center Cabinet on Driver Side	NA	NA	NA	NA	NA	O
Theatre Seating on Passenger Side	NA	NA	NA	O	O	NA
Ultraleather Air Coil Sofa/Bed and Lift TV on Driver Side	NA	NA	NA	O	O	NA
Ultraleather Air Coil Sofa and Ultraleather Recliner on Driver Side	NA	S	NA	NA	NA	NA
Ultraleather L-shaped Sofa and Ultraleather Recliner on Driver Side	NA	O	NA	NA	NA	NA
Fireplace with Two Ultraleather Recliners on Driver Side	NA	NA	NA	NA	NA	O
Fireplace with Ultraleather Recliner with Angled TV Cabinet on Driver Side	NA	NA	NA	O	O	NA
Fireplace with Ultraleather Recliner with Lift TV on Passenger Side	O	NA	O	NA	NA	NA
Fireplace Below TV	NA	O	NA	NA	NA	NA

Note: Cannot option Air Coil Sofa on Driver Side and Passenger Side. Certain variations of furniture combinations will affect sleeping capacity. Certain variations will restrict walkway space.

## BEDROOM

### STANDARD ON ALL MODELS:

- Bed Comforter with Throw Pillows
- DVD Player in Bedroom with Surround Sound
- Under Bed Storage
- Memory Foam Queen Mattress
- Ceiling Fan
- Flat Panel TV
- Carbon Monoxide Detector
- LPG Leak Detector
- Chest of Drawers with Laundry Hamper

AVAILABLE OPTIONS:	37 BH	40 AH	40 IH	40 QBH	40 QKH	44 OH
Bunk Beds with Bunk Ladder/Convertible Wardrobe	NA	NA	NA	NA	S	NA
Air Comfort Mattress — Queen (60" x 80")	O	O	O	O	O	O
Air Comfort Mattress — King (72" x 80")	O	O	O	O	O	O
Memory Foam King Mattress (72" x 80")	O	O	O	O	O	O
Safe	O	O	O	O	O	O

## BATHROOM

### STANDARD ON ALL MODELS:

- Medicine Cabinet with Vanity Lights
- Skylight and LED Light in Shower
- Solid Surface Vanity Top and Bowl
- Solid Wood Custom Privacy Door
- 10-Gallon DSI Gas/Electric Water Heater (LP Gas Units Only)
- 3-speed Fantastic® Fan

## COCKPIT

### STANDARD ON ALL MODELS:

- Ultraleather Power Driver and Passenger Seats
- Contemporary Wraparound Dash
- Courtesy Drawer in Step Well
- Courtesy Light in Step Well
- Dual Dash Fans
- Two Drawers in Dash
- Dual 12 V Dash Receptacle
- Single CD Player and AM/FM Stereo
- USB Dash Receptacle
- Computer Slide-out Tray with Lock-out Rails on Passenger Side
- Power Solar and Privacy Windshield Shade
- Driver/Passenger Side Window Solar and Privacy Shades
- Color Rear Vision Monitor System with Side-view Cameras Activated by Turn Signals
- Satellite-ready Radio Includes Receiver and Antenna (Requires Subscription)
- Integrated Seatbelt Brackets
- Fire Extinguisher
- Front Overhead Flat Panel TV

AVAILABLE OPTIONS:	37 BH	40 AH	40 IH	40 QBH	40 QKH	44 OH
In-dash Navigation System	O	O	O	O	O	O
Mobileye Collision Avoidance System	O	O	O	O	O	O
Ultraleather Power Passenger Seat with Footrest	O	O	O	O	O	O



## LET YOUR JOURNEY BEGIN

Tiffin Motorhomes is proud to be one of the few family-owned manufacturers in the industry, and it makes a significant difference in how our company operates. For starters, with the Tiffin name on every coach, building a superior motorhome isn't just our occupation. It's a matter of personal pride, a pursuit we have committed our lives to perfecting.

We know it's not just about where a coach will take you, but the experience you take from the journey. That's why every Tiffin motorhome is made to move you.

### TIFFIN LIMITED WARRANTY

10

YEAR CONSTRUCTION LIMITED WARRANTY

5

YEAR DELAMINATION LIMITED WARRANTY

1

YEAR LIMITED WARRANTY

1

YEAR COACH ROADSIDE SERVICE

ONGOING CUSTOMER SUPPORT



[TIFFINMOTORHOMES.COM](http://TIFFINMOTORHOMES.COM)

FOR PARTS & SERVICE CALL  
256/356.8661

- /TIFFINMOTORHOMES
- /TIFFINMOTORHOMES
- /TIFFINMOTORHOME
- /TIFFINMOTORHOME

Some interior furnishings not included. Unless where noted, all content ©2019 Tiffin Motorhomes, Inc. Allegro®, Allegro Breeze®, Allegro Red®, Phaeton®, Allegro Bus®, Zephyr®, Wayfarer®, Roughing It Smoothly®, Open Road®, PowerGlide®, and Pusher® are registered trademarks of Tiffin Motorhomes, Inc. All rights reserved. For all information concerning the limited warranty provided by Tiffin, please refer to the full written limited warranty set forth on the Tiffin website or held by our authorized dealerships.