

WARRANTY FOR
FULL TIME RVING*

*REFERENCE KEYSTONE RV COMPANY OWNERS MANUAL FOR LIMITED WARRANTY DETAILS

LUXURY FIFTH WHEELS
keystonerv.com/montana-high-country

MONTANA HIGH COUNTRY

10TH ANNIVERSARY EDITION



The ultimate
ownership experience.

The ultimate ownership experience.

The goal of Keystone RV Company is to surprise and delight our owners at each and every touchpoint. We're happy when our campers are happy, and we are committed to providing the very best ownership experience in the industry.



**Keystone RV
Company**

1 EASIER SHOPPING.

At Keystone, we make choosing an RV as easy as finding the Big Dipper on a dark summer night. With comprehensive online product information, Key Connect™ product advisors, and an unparalleled dealer network, we will help you select the perfect RV for your family's adventure.

2 INNOVATIVE THINKING.

The road's a nicer place when you have the industry's smartest features behind you. Keystone leads the pack in patented innovations that make our RVs safer, more comfortable, and easier to operate.

3 LONG HAUL QUALITY.

To keep you on the road, there are certain things we just won't build a Keystone RV without. Game-changing features like our Unified Wiring Standard, Tru-Fit™ five-point slide construction, and no-fail Tuf-Lok™ A/C duct joiners combined with exhaustive testing and inspections are some of the reasons why Keystone is able to offer our owners the industry's best 3-year limited structural warranty.

4 WORRY-FREE CUSTOMER SERVICE.

Wherever the road takes you, you're never too far from an authorized Keystone service center. We also offer live service assistance, ultra-fast parts shipping, online maintenance tips and tricks, and a single-point warranty claims policy. *That's* peace of mind.

5 KEYSTONE NATION.

When you choose Keystone, you become a part of one of the largest camping families in the country. We're Keystone Nation. A friendly community where people share photos, travel tips and amazing stories – all in the spirit of camaraderie and adventure. Come join us.

Experience the Montana lifestyle by visiting [#keystonemontanahighcountry](https://www.instagram.com/keystonemontanahighcountry)



MONTANA HIGH COUNTRY

UPGRADE YOUR ADVENTURE



LUXURY FIFTH WHEELS

Montana High Country takes adventure to new limits

Built on the legacy of the Montana brand, Keystone's Montana High Country fifth wheels deliver the quality construction and premium appointments you expect from Montana in a more agile, family-focused lineup. Most High Country floorplans are ¾-ton towable and each is designed with the practical luxury that active RVers are looking for—features like chef-friendly kitchens with residential appliances, king size beds, double-vanity bathrooms, and ceiling fans. Get ready to upgrade your adventure with Montana High Country.



ONE OF THE MOST-AWARDED BRANDS IN THE INDUSTRY

Keystone EXCLUSIVE Innovations

Year after year, Keystone RV's experienced team delivers Built For the Long Haul quality you expect and exclusive innovations you won't find anywhere else.



4G LTE and Wi-Fi Prep

All units are equipped with a new antenna that integrates 4G LTE and Wi-Fi with standard VHF/UHF/AM/FM reception.



3-year Limited Structural Warranty, 1-year Limited Base Warranty

Every new Keystone RV comes with the industry's best three-year limited structural warranty AND a one-year limited base warranty. Ask your dealer, visit keystonerv.com, or call Keystone owner relations for details.



KeyTV™

No more connection guesswork or poor reception. KeyTV offers a game-changing, single point of control of over-the-air, cable, and satellite feeds. Visit us online for more information.



Color-Coded Wiring

Easy-to-trace circuits simplify electrical and entertainment system troubleshooting.



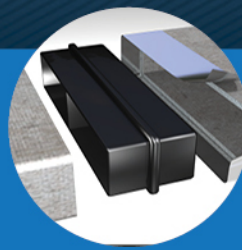
Automotive-Grade Painted Fiberglass Cap

Six layers of stunning and resilient automotive-grade paint with Key-Shield™ paint technology.



In-Floor Heating Ducts

Ducting allows for more airflow that distributes heat evenly for optimal comfort.



Tuf-Lok™ A/C Duct Joiners

Crush resistant design securely joins ductwork and A/C units, and drastically reduces chilled-air leaks to boost cooling efficiency and comfort.



Tru-Fit™ Slide Construction

A more durable slide room design that minimizes functional motor and structural stress, and resists leaking.



Power Reclining Theater Seating w/ USB Ports

Ultra-stylish reclining furniture with cup holders and USB charging station.



MORryde® StepAbove®

Safe and secure main entry with strut assist.



Easy Sweep Resilient Flooring

Keep your RV tidy with durable vinyl flooring in the bedroom.



Indoor/Outdoor Central Vacuum

Clean up your coach in a snap with this convenient tool.



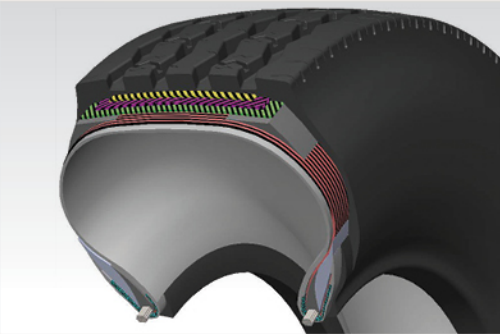
Night Roller Shades

Shades allow you to control light and privacy levels at any time.



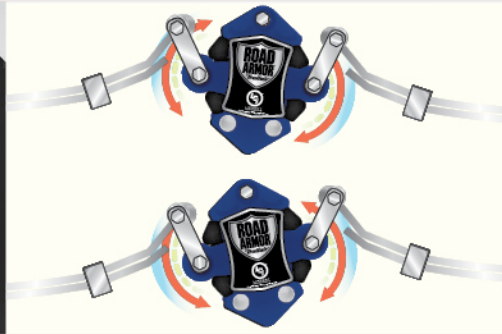
2" Towing Hitch (N/A 372RD/373RD, 376FL/377FL)

Allows you to tow your watercraft behind your RV (up to 3,000 lb).



Rainier F-Rated Tires with 5-Year Warranty

12-Ply tires from the factory, designed to carry your load without worry.



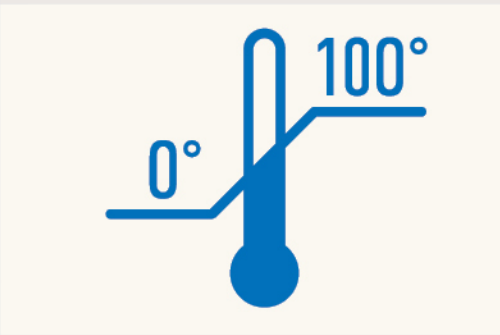
EXCLUSIVE Road Armor™ Suspension W/ 360° Vibration Control

Equalizes axle load to dampen shock and vibration.



Wet Bolts

Greasable wet bolts reduce friction and improve the life of your suspension system.



Four Season Camping

Water lines and tanks are protected to keep you camping down to 0°F.



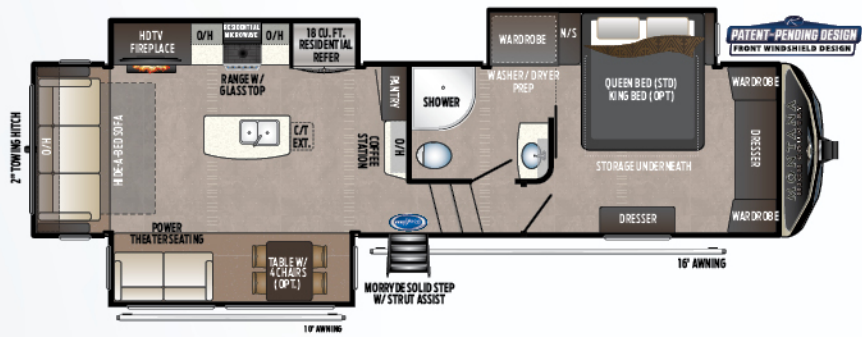
30K BTU A/C w/ Quiet Cool & Heat Pump

1/3 the noise of traditional A/C systems and the ability to warm your trailer without turning on your furnace.



Double Insulated Rear Wall

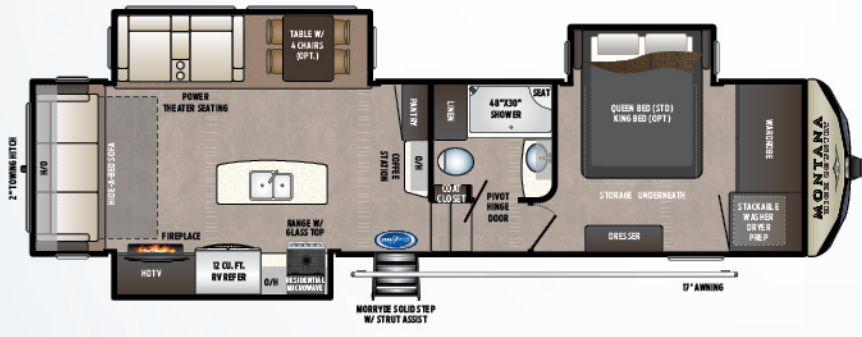
Traditional batten and solid foam are paired in this Montana feature to create the best rear wall in the industry.



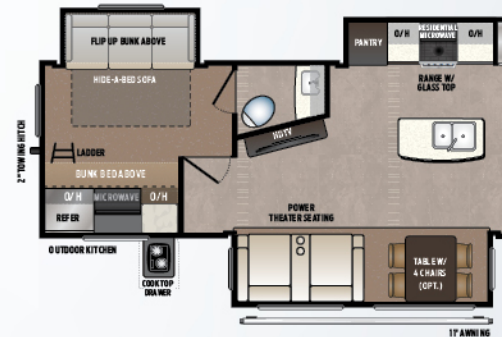
294/295RL | REAR LIVING ROOM, THREE SLIDES | Weight: 11035 LBS. | Length: 34' 0"
RV REFRIGERATOR | RV REFRIGERATOR



362RD | REAR DEN OR REAR BUNKHOUSE
RV REFRIGERATOR



305RL | REAR LIVING ROOM, THREE SLIDES | Weight: 10788 LBS. | Length: 34' 3"
RV REFRIGERATOR



364/365BH | BUNKHOUSE W/ FULL BATH, HALL
RV REFRIGERATOR | RES. REFRIGERATOR



330/331RL | REAR LIVING ROOM, BATHROOM WITH DOUBLE VANITY | Weight: 11369 LBS. | Length: 37' 4"
RV REFRIGERATOR | RES. REFRIGERATOR



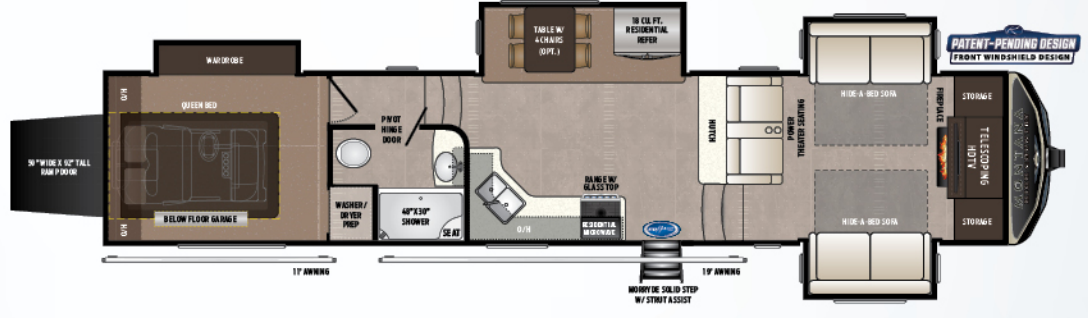
372/373RD | ELEVATED REAR DEN W/ FULL BATH
RV REFRIGERATOR | RES. REFRIGERATOR



NEW! **334/335BH** | BATH AND A HALF BUNKHOUSE W/ REAR OVERHEAD LOFT, UNDER 37' LONG | Weight: 12305 LBS. | Length: 36' 8"
RV REFRIGERATOR | RES. REFRIGERATOR



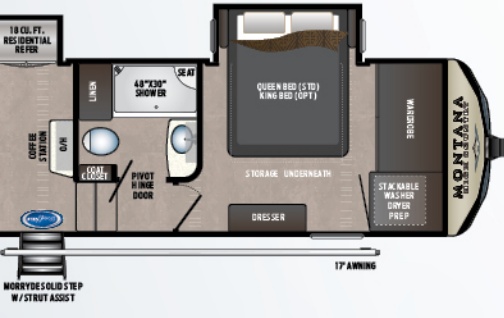
NEW! **376/377FL** | FRONT LIVING ROOM
RV REFRIGERATOR | RES. REFRIGERATOR



KITCHEN | Weight: 13097 LBS. | Length: 40' 1"

380 / 381TH
RV REFRIGERATOR RES. REFRIGERATOR

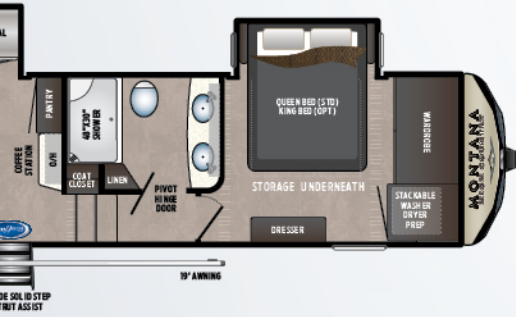
FRONT LIVING ROOM W/ REAR GARAGE AND RAMP DOOR | WEIGHT: 13546 LBS. | LENGTH: 41' 6"



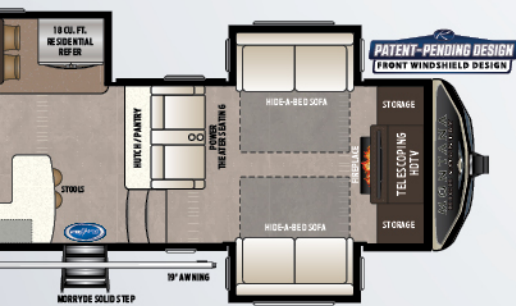
1/2 BATH, OUTSIDE KITCHEN | Weight: 12850 LBS. | Length: 40' 11"

384 / 385BR
RV REFRIGERATOR RES. REFRIGERATOR

BONUS ROOM W/ LOFT AND OUTSIDE KITCHEN | Weight: 13063 LBS. | Length: 40' 8"



REAR STORAGE | Weight: 12848 LBS. | Length: 41' 4"



FOUR SLIDES W/ REAR OVERHEAD LOFT | Weight: TBD LBS. | Length: TBD

#1 SELLING LUXURY FIFTH WHEEL BRAND
19 YEARS IN A ROW.



more product detail at
www.keystonerv.com/montana

MYSTIC ASH INTERIOR DÉCOR

Step in and experience the opulence of this stylish new interior. Textural and unencumbered, this gray stained cabinetry boasts a traditional grain pattern in a modern hue. A multi-tonal floor and backsplash provide a soft complement to the muted cabinets and rich wood accents.

Unexpected and delightful, come home to a Montana High Country.



330RL BEDROOM



330RL KITCHEN AND LIVING



330RL KITCHEN



335BH ENTERTAINMENT AND KITCHEN



335BH BUNKROOM



335BH BEDROOM



335BH LIVING AND KITCHEN

MODEL	WEIGHT	CARRYING CAPACITY	HITCH WEIGHT	FRESH WATER	WASTE WATER	GRAY WATER	LPG	LENGTH*	HEIGHT
294RL	11035	3265	2300	66	49	88	60	34' 0"	13' 4"
295RL	11035	3265	2300	66	49	88	60	34' 0"	13' 4"
305RL	10904	3396	2395	66	49	98	60	34' 3"	13' 4"
330RL	11530	2730	2255	66	49	98	60	37' 4"	13' 4"
331RL	11540	2710	2255	66	49	98	60	37' 4"	13' 4"
334BH	12115	3885	2405	66	88	88	60	36' 8"	13' 4"
335BH	12115	3885	2405	66	88	88	60	36' 8"	13' 4"
362RD	13260	2740	2885	66	88	98	60	40' 1"	13' 4"
364BH	12961	3039	2730	66	88	98	60	40' 11"	13' 4"
365BH	12850	3150	2730	66	88	98	60	40' 11"	13' 4"
372RD	12939	3061	2530	66	49	88	60	41' 4"	13' 4"
373RD	12848	3152	2530	66	49	88	60	41' 4"	13' 4"
376FL	TBD	TBD	TBD	66	39	78	60	41' 8"	13' 4"
377FL	13145	3345	2490	66	39	78	60	41' 8"	13' 4"
380TH	13661	3339	3185	66	39	78	60	41' 6"	13' 4"
381TH	13661	3339	3265	66	39	78	60	41' 6"	13' 4"
384BR	13226	3274	2580	66	49	98	60	40' 8"	13' 4"
385BR	13226	3274	2660	66	49	98	60	40' 8"	13' 4"

DISCLAIMER: Product information is as accurate as possible as of the date of publication of this brochure. All features, floor plans, and specifications in this brochure are subject to change without notice. Please also consult Keystone's web site at www.keystonerv.com for more current product information and specifications. **Tow Vehicle Disclaimer. CAUTION:** Owners of Keystone recreational vehicles are solely responsible for the selection and proper use of tow vehicles. All customers should consult with a motor vehicle manufacturer or their dealer concerning the purchase and use of suitable tow vehicles for Keystone products. Keystone disclaims any liability or damages suffered as a result of the selection, operation, use or misuse of a tow vehicle. **KEYSTONE'S LIMITED WARRANTY DOES NOT COVER DAMAGE TO THE RECREATIONAL VEHICLE OR THE TOW VEHICLE AS A RESULT OF THE SELECTION, OPERATION, USE OR MISUSE OF THE TOW VEHICLE.** *Length is defined as the distance from the centerline of hitch pin/coupler to rear bumper of trailer. Please review owner's manual prior to purchase for more information on service warranties, extended use, towing and maintenance. Owner's manuals can be found at keystonerv.com.

10TH ANNIVERSARY EDITION

New Interior Décor: Shaker Style Mystic Ash Cabinetry

New Interior Décor: Shaker Style Mystic Ash refrigerator panels (294, 305, 330, 334, 362, 364, 372, 374, 380, 384)

KITCHEN FEATURES

12 cubic foot 4 door RV refrigerator, mandatory (294, 305, 330, 334, 362, 364, 372, 374, 380, 384)

French door residential refrigerator w/ ice maker and 1000 watt inverter, mandatory (295, 331, 335, 365, 373, 375, 381, 385)

Full extension drawer guides

Pull out kitchen trash can (select models)

Solid surface kitchen countertop (Residential Living Package)

Solid surface flush mount sink covers (Residential Living Package)

Sink cover storage below kitchen sink (Residential Living Package)

Deep 60/40 stainless steel sink (Residential Living Package)

High-rise faucet with integrated pull-out sprayer (Residential Living Package)

30" over-the-range microwave (Residential Living Package)

Furrion® 21" 2 in 1 stainless steel cooktop and oven with triple glass door (Residential Living Package)

Glass bifold range cover (Residential Living Package)

Booth dinette with easy-lift seats (Residential Living Package)

Motion sensor LED light in pantry (select models) (Residential Living Package)

Power vent fan with rain sensor & wall controls

HOME ENTERTAINMENT

Climatesmart & Vibrationsmart Furrion® Studio Collection with single remote control

Marine grade exterior speakers

KeyTV™ satellite prep (Residential Living Package)

Omnidirectional rooftop antenna with 4G LTE / Wi-Fi prep (Residential Living Package)

HD LED TV with Climatesmart & Vibrationsmart, living room (Residential Living Package)

BEDROOM FEATURES

Easy Sweep master bedrooms (n/a 380/381TH)

Easy-Sweep vinyl flooring ipo carpet

60" x 80" Queen Bed

Reading lights over bed

Massive storage under bed

High density foam mattress (Residential Living Package)

Bedside USB charging station (Residential Living Package)

Bedside nightstands (Residential Living Package)

Prepped for combo or stackable washer/dryer with separate 20amp circuits for each appliance (Residential Living Package)

Magnetic bedroom door holder (Residential Living Package)

Motion sensor LED light in bedroom closet (Residential Living Package)

Four (4) drawer large size dresser

BATHROOM FEATURES

Skylight over shower

12-gallon DSI gas/electric water heater with 16.2 GPH fast recovery

Undermount sink

Seamless countertop

Three (3) drawers (1) door vanity

Brushed nickel shower head and faucet
 Seamless fiberglass shower w/ seat (Residential Living Package)
 Porcelain foot-flush toilet (Residential Living Package)
 50 Amp service (Residential Living Package)
 60 Amp converter with charge wizard technology (Residential Living Package)

CONSTRUCTION FEATURES

Unified wiring standard: each wire color-coded and numbered
 Roof rafters
 Welded aluminum framed walls and floors
 Laminated sidewalls with dual layered lauan and metal backing strips to anchor interior cabinets
 Seamless 5/8" thick floor decking
 Powder coated 10" steel I-beam frame (294, 295, 305, 330, 331, 334, 335)
 Powder coated 12" steel I-beam frame (362, 364, 365, 372, 373, 374, 375, 380, 381, 384, 385)
 Seamless roto-cast holding tanks
 Double insulated rear wall

FOUR SEASON FEATURES

35,000 BTU furnace (Four Season Living Package)
 3"x 14" in-floor straight line heat duct system (Four Season Living Package)
 15,000 BTU ducted air conditioner, bedroom (Four Season Living Package)
 15,000 BTU Whisper Quiet main air conditioner system, living room (Four Season Living Package)
 16,500 BTU heat pump on main air conditioner (Four Season Living Package)
 Tested and approved for 0 degree usage (Four Season Living Package)
 Two attic vents for cross ventilation (Four Season Living Package)
 Insulated and heated holding tanks and dump valves (Four Season Living Package)
 Enclosed and heated low point drains (Four Season Living Package)
 12V electric tank heaters, all tanks (Four Season Living Package)
 30" LED Fireplace (Four Season Living Package)

TOWING FEATURES

MaxTurn™ front cap and radius frame with Hitch Vision®
 Hitch Vision™ mirror
 Road Armor™ suspension (380/381TH: Trail Air suspension)
 Road Armor™ king pin
 Backup camera prep
 F-range tires with 5-year manufacturer warranty
 16" 8-Lug aluminum wheels (110 PSI)
 6000 lb. Dexter E-Z Lube® axles with self-adjusting brakes (294, 295, 305, 310, 330, 331)
 7000 lb. Dexter E-Z Lube® axles with self-adjusting brakes (334, 335, 362, 364, 365, 372, 373, 374, 375, 380, 381, 384, 385)
 Backup lights
 Under-mount spare tire and carrier

EXTERIOR FEATURES

Automotive paint with two layers of clear coat on front cap
 Tinted safety glass windows

Fold-away entry handle
 Rear roof ladder
 Slam latch pass-through storage compartment doors
 Extra Large 30" wide entry door with friction hinge
 Enormous drop frame pass through-storage compartment
 MORryde® Step Above® entry steps with strut assist
 Motion sensor LED lights in pass-through storage compartment
 Motion sensor LED lights in toy hauler garage
 LPG quick connect for accessories

EASY SET-UP FEATURES

Dometic Power Channel™ electric awning
 Heated central exterior water and convenience center : (Outside shower with quick connect hose, black tank flush, easy winterization kit, water heater bypass, power tank fill, enclosed low point drains, battery disconnect, KeyTV™ cable/satellite hook-ups, 12v light)

INTERIOR OPTIONS

King bed (n/a 362, 380, 381)
 Power vent fan with rain sensor in bathroom
 Power vent fan with rain sensor in rear bathroom (362, 364, 365)
 Free standing dinette with 4 chairs

EXTERIOR OPTIONS

4 Point electric automatic leveling system, mandatory (294, 295, 305, 330, 331, 334, 335)
 6 Point electric automatic leveling system, mandatory (362, 364, 365, 372, 373, 374, 375, 380, 381, 384, 385)
 Dual pane frameless windows
 Slide-out awnings package
 Generator ready (Onan 5.5 KW specifications)
 Onan Marquis Gold 5.5 KW LP generator
 Roof mounted solar prep, mandatory
 Solar Flex System: 265 watt solar panel with 30 AMP controller & 2000 watt inverter
 2" accessory hitch, mandatory (372, 373)
 2" towing hitch, mandatory (294, 295, 305, 330, 331, 334, 335, 362, 364, 365, 374, 375, 384, 385)
 2nd Dometic Power Channel™ electric awning, mandatory (294, 295, 330, 331, 334, 335, 364, 365, 380, 381, 384, 385)

BUILT FOR THE LONG HAUL



PRINT 11.2019

