



Discovery 38F  
Shown in Waters Edge Graphics

### CHASSIS | ENGINE | TIRES

- Freightliner® Custom Modular Chassis
- Cummins®, 6.7L, 360HP Engine
- Allison 3000 Series Transmission, 6-Speed
- V-Ride™
- 100 Gallon Fuel Tank
- 33,400# GVWR
- Michelin Tires 275/80R 22.5"
- DriveTech /Optiview™
- Up to 55° Turning Radius
- Front Generator Slide
- Push Button Start, Digital Dash, Key Fob, Auto LED Headlights, Fully Integrated Steering Wheel Controls
- BrakeSync - **NEW**  
Chassis Integrated Air Supply for Your Tow Vehicle Brake System. Factory-Installed and Factory-Warrantied.

- Shadow Box at Large Galley Window
- Solid Surface Galley & Lavy Tops Throughout
- Glass Tile Galley Backsplash
- Convection Microwave
- Induction Cooktop
- 21 cu. Residential Refrigerator, Side-by-Side, in the Door Water/Ice
- Polished Porcelain Tile Floor w/Front Heat-Standard
- Fireplace
- Firefly MultiPlex Wiring, 5" Color Touchscreen
- Articulating King Bed
- Fiberglass Shower w/Glass Door & Sky Light
- Adap-Table® Dinette (36Q)
- Roadwire® Residential Style Furniture 6-way Power Driver/Passenger Seats
- Solar Panel 100w

### EXTERIOR

- Freedom Bridge®
- Full-pass Through Exterior Storage
- Top Mounted Windshield Wipers
- Luggage Doors, Side Swing, Aluminum, Bus Style
- 105 Fresh/75 Gray/50 Black Tanks (gallon)
- (2) 15M BTU Roof AC's w/Chill Grill and Rear Heat Pump
- Aqua-Hot® 400D
- Exterior Entertainment Center w/TV w/Soundbar w/Bluetooth®
- Electric Awning w/Lighting & Motion Sensor Retract

### INTERIOR

- KING® Universal Satellite System
- Dual Monitors at the Dash
- MCD Power Roller Shades and Blinds

### OPTIONS

- Motion Power Lounge w/USB and Lighted Cupholders
- Hide-A-Loft™ Electric Drop Down Bed
- Mid-ship LED TV (38W)
- Dishwasher
- Dream Dinette (38W)
- L-Shaped Dinette (38N)
- Third Roof A/C
- Free Standing Dinette w/Credenza (38K, 38M, 38W)
- Technology Package:  
Wi-Fi Extender Pro Pack w/LTE, Cell Booster, 300w Solar Panel, Collision Mitigation by Mobileye®, Firefly Eclipse Module - Enabling Remote Access w/App Via Wi-Fi

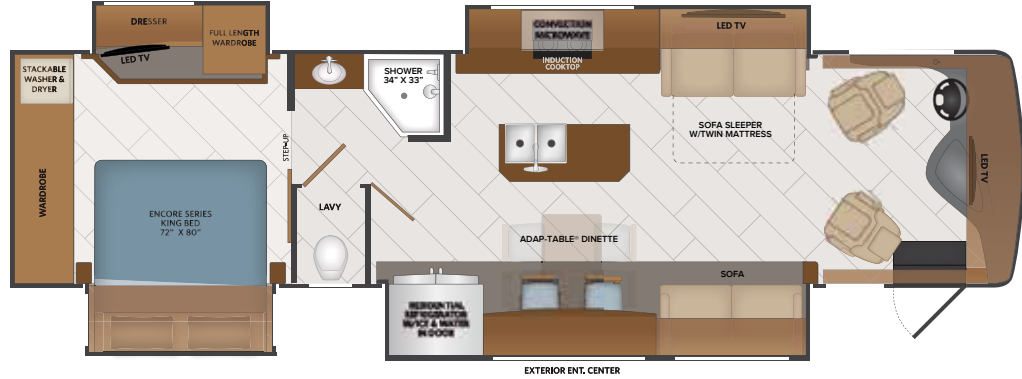
**36Q | 38K | 38N | 38W**

Options: 099, 107, 209, 217, 237, 436, 473, 563

**TOP FLOORPLAN FEATURES**

**36Q**

1. Sleeps up to 6
2. Residential Galley w/ Functional Island
3. Adap-table® Dinette Versatile Seating that Showcases the Panoramic Window View or when Additional Table Seating is Needed Converts to a Dinette Table
4. Private Master Suite
5. Jack and Jill Lavy w/ Private Water Closet

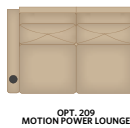
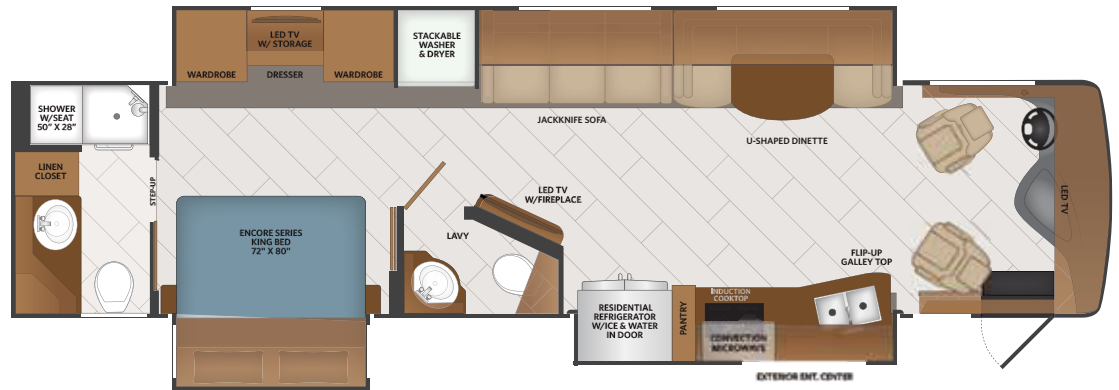


Options: 099, 107, 209, 217, 237, 436, 473, 563, 833

**TOP FLOORPLAN FEATURES**

**38K**

1. Sleeps up to 5
2. Open Living Area
3. U-benched Dinette
4. Jackknife Sofa
5. Porcelain Tile Floor
6. Fiberglass Shower w/ Seat & Skylight



**DISCOVERY OPTIONS**

099	Satellite Delete
107	Dishwasher
209	Motion Power Lounge (Ottoman's are omitted on 44B)
217	Hide-A-Loft™ Drop Down Queen Bed
237	Third Roof A/C
345	Mid-ship LED TV (38W)
436	CSA Freightliner Package

473	Brakesync— <b>NEW</b>
563	Technology Package: Wi-Fi Extender Pro Pack w/LTE, Cell Booster, 300W Solar Panel, Collision Mitigation by MobileEye, Firefly Eclipse Module - Enabling Remote Access w/App Via Wi-Fi
809	L-shaped Dinette (38N)
830	Dream Dinette (38W)
833	Free Standing Dinette w/Credenza (38K & 38N)

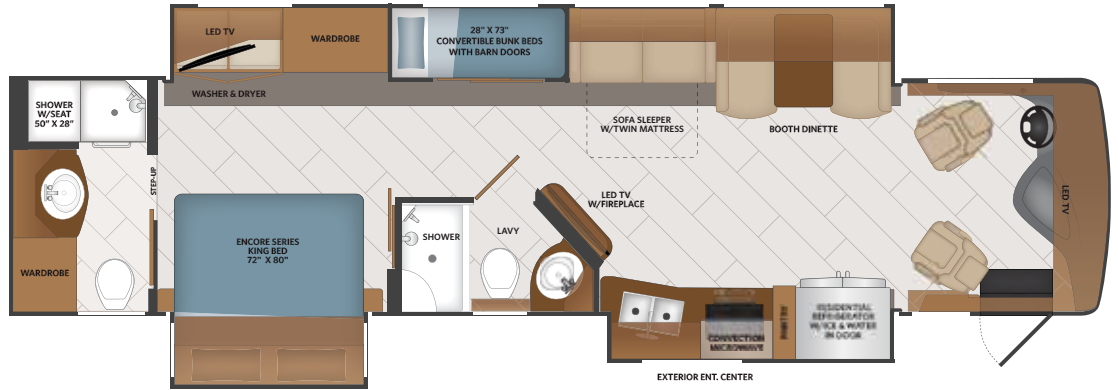
36Q | 38K | 38N | 38W

Options: 099, 107, 209, 217, 237, 436, 473, 563, 809, 833

**TOP FLOORPLAN FEATURES**

**38N**

1. Sleeps up to 8
2. Convertible Bunk Beds & Open Living Area
3. Shadow Box at Large Galley Window
4. Solid Surface Galley and Lavy Tops
5. Firefly Multiplex Wiring w/Color Touchscreen
6. Solar Panel 100W

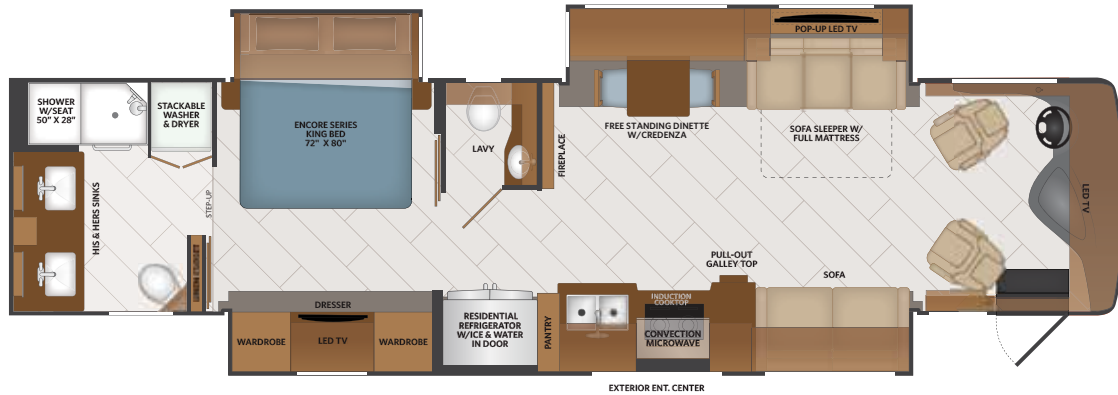


Options: 099, 107, 209, 217, 237, 345, 436, 473, 563, 830

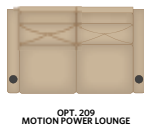
**TOP FLOORPLAN FEATURES**

**38W**

1. Sleeps up to 7
2. Large Master Suite
3. Sofa Sleeper w/Full Mattress
4. Pop-up LED TV, Living Room
5. Dual Wardrobes and Dresser, Bedroom
6. Large Residential-like, Private Lavy with His and Her Dual Sinks
7. Pantry



OPT. 107 DISHWASHER



OPT. 209 MOTION POWER LOUNGE



OPT. 345 MID-SHIP LED TV



OPT. 830 DREAM DINETTE



OPT. 833 FREE STANDING DINETTE W/CREDENZA



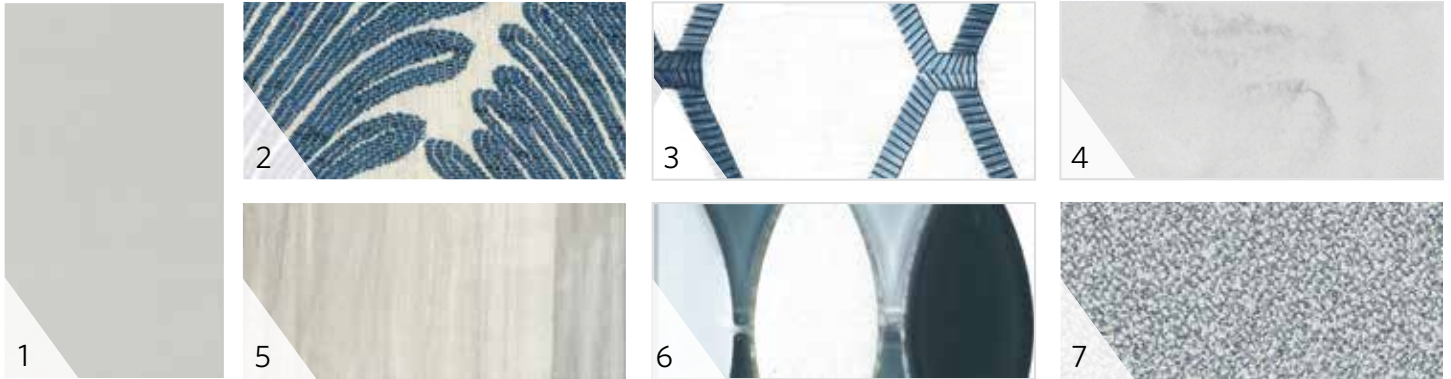
OPT. 217 HIDE-A-LOFT™ ELECTRIC DROP DOWN BED

**DISCOVERY OPTIONS**

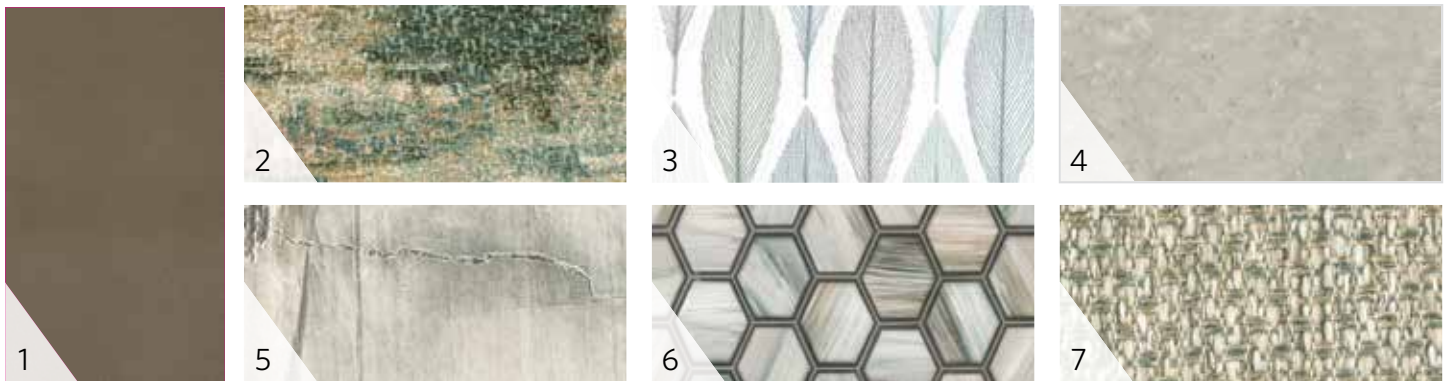
099	Satellite Delete
107	Dishwasher
209	Motion Power Lounge (Ottoman's are omitted on 44B)
217	Hide-A-Loft™ Drop Down Queen Bed
237	Third Roof A/C
345	Mid-ship LED TV (38W)
436	CSA Freightliner Package

473	Brakesync— <b>NEW</b>
563	Technology Package: Wi-Fi Extender Pro Pack w/LTE, Cell Booster, 300W Solar Panel, Collision Mitigation by MobileEye, Firefly Eclipse Module - Enabling Remote Access w/App Via Wi-Fi
809	L-shaped Dinette (38N)
830	Dream Dinette (38W)
833	Free Standing Dinette w/Credenza (38K & 38N)

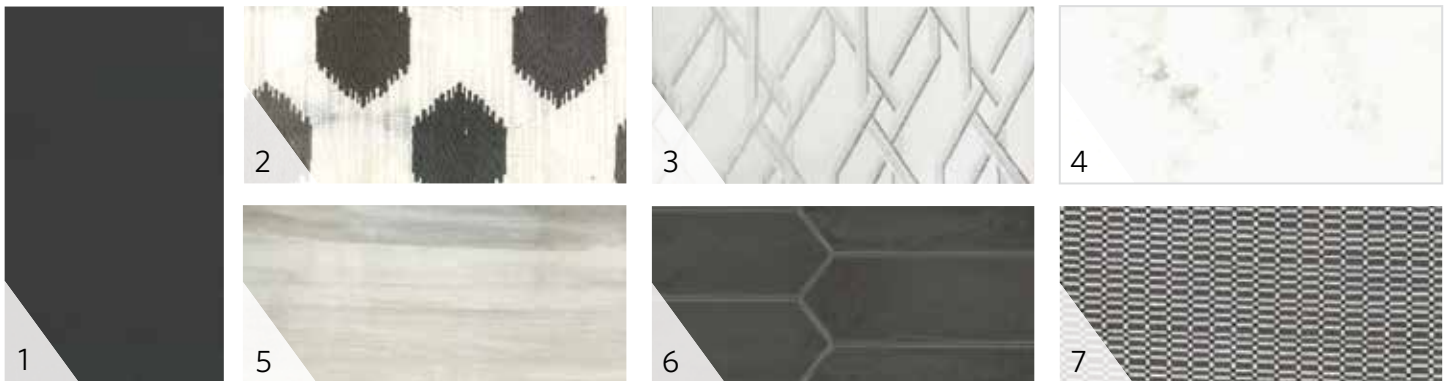
ENCLAVE



SPANISH MOSS



RIDGELAND



- |                 |              |              |           |
|-----------------|--------------|--------------|-----------|
| 1 SOFA          | 3 BEDDING    | 5 FLOORING   | 7 VALANCE |
| 2 LIVING ACCENT | 4 COUNTERTOP | 6 BACKSPLASH |           |



ENGLISH CHESTNUT



GREYSTONE



HERITAGE  
(PAINTED CABINETRY)



WINTER FOG  
(PAINTED W/GLAZED ACCENTS CABINETRY)

Premium Four Color, Full Body Paint



BLACKBERRY CREEK



COTTONMILL



HOTLAP



TRADEWINDS



WATER'S EDGE

CHASSIS	36Q	38K	38N	38W
Wheelbase (inches)	263"	252"	252"	263"
Front GAWR (lbs)	12,400	12,400	12,400	12,400
Rear GAWR (lbs)	21,000	21,000	21,000	21,000
GCWR (lbs)	43,400	43,400	43,400	43,400
Hitch Rating Weight (lbs)	10,000	10,000	10,000	10,000
Tongue Weight (lbs)	1,000	1,000	1,000	1,000
Fuel Capacity (gal)	100	100	100	100

DIMENSIONS AND CAPACITIES	36Q	38K	38N	38W
Overall Length (inches)	37' 3"	40' 0"	40' 0"	40' 11"
Overall Height (suspension inflated)	12' 10"	12' 10"	12' 10"	12' 10"
Overall Width (maximum)	102"	102"	102"	102"
Interior Height (maximum)	84"	84"	84"	84"
Interior Width (maximum)	96"	96"	96"	96"
Patio Awning Width (ft.)	14' 0"	10' 8"	18' 0"	18' 0"
Interior Storage (cu. ft.)	147	140	148	132
Exterior Storage (cu. ft.)	88	127	127	142
Fresh Water Holding Tank (gal)	105	105	105	105
Grey Water Holding Tank (gal)	75	75	75	75
Black Water Holding Tank (gal)	50	50	50	50
Aqua-Hot 400D	S	S	S	S

**FREEDOM BRIDGE® CHASSIS**

Model: Freightliner® XCM Series  
 Engine: Cummins ISB 6.7L  
 Transmission: Allison® 3,000 MH 6-Speed w/Electronic Shifter  
 Alternator: Delcom Remy 160 Amp  
 Torque: 800 lb.-ft. @ 1,800 RPM  
 Horsepower: 360HP



All 2022 REV Recreation Group motorhomes include a limited one year/15,000-mile coach warranty and three-year/45,000-mile structural warranty, whichever occurs first, and is fully transferable for the first 12 months.

Product information, photography and illustrations included in this publication were as accurate as possible at the time of printing. For further product information and changes, please visit our website at [www.fleetwoodrv.com](http://www.fleetwoodrv.com) or contact your local Fleetwood dealer. Prices, materials, design and specifications are subject to change without notice. All weights, fuel, liquid capacities and dimensions are approximate. Fleetwood RV has designed its recreational vehicles to provide a variety of uses for its customers. Each vehicle features optimal seating, sleeping, storage and fluid capacities. The user is responsible for selecting the proper combination of loads (i.e., occupants, equipment, fluids cargo, etc.) to ensure that the vehicle's capacities are not exceeded.