

TIFFIN

CLASS-C

WAYFARER





2022 WAYFARER

EXTRAORDINARY. FOR ESCAPING THE ORDINARY.

Get even closer to nature. Or even completely off the grid. Welcome to the 2022 Wayfarer. It offers more of everything you want in a Class C, along with the luxurious styling and amenities synonymous with Tiffin. Designed inside and out with your every need in mind, it features a spacious interior, industry-standard safety features, and high-performance handling with the Mercedes-Benz® chassis. Spontaneous adventures and exploring nature are what the Wayfarer is all about. That's why it's ingeniously engineered with ample storage room for all your gear to join you on your journey. So go your way. In your 2022 Wayfarer.

Top to bottom: Driver Side Booth Dinette; Kitchen; Driver Side Queen Sofa Murphy Bed. All interiors shown are 25 RW with Sandstone cabinets, Mink décor.



Premium Paint System

Our eight-step full-body paint system features premium grade paints sealed with three layers of superclear coat with ultraviolet protection. An additional layer of scratch-resistant plastic coating protects the front of the coach, stairwell, and entry door lock.



COASTAL MIST



SAND DRIFT



OBSIDIAN



SILVER SAND



HARMONY



PEBBLE CREEK

Floor Plans

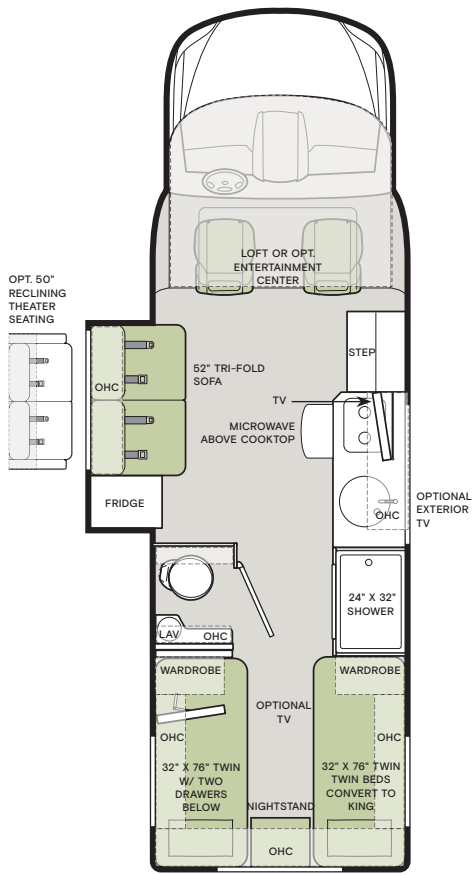


The design of every Wayfarer floor plan must meet four essential criteria: Maximum space, Optimal organization, Relaxation plus, and Elegant atmosphere. Tiffin's MORE Plans offer your family the most comfortable layout for life on the road.

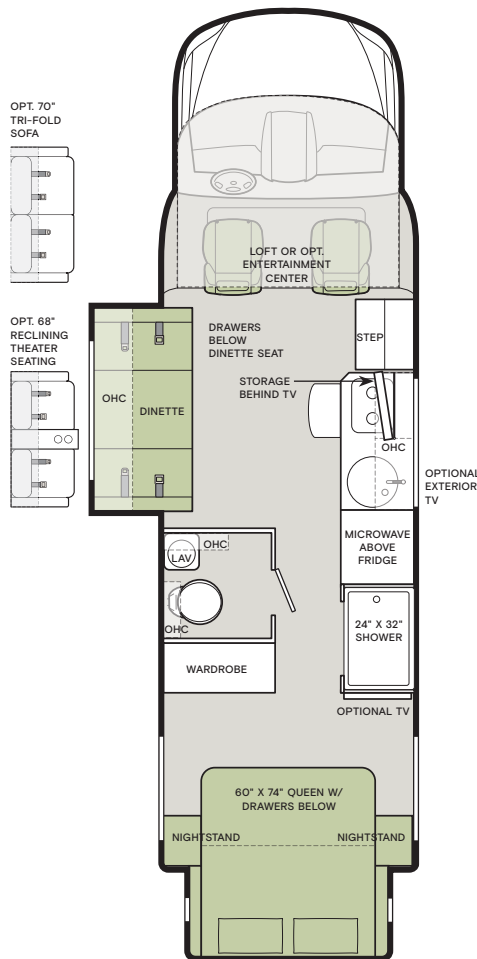
If optional furniture combinations are selected, window locations may vary from diagram shown. All options may not be available in every model.

Because of progressive improvements and specifications, standard and optional equipment are subject to change without notice or obligation. For a complete and up-to-date list of available options and specifications, visit tiffinmotorhomes.com.

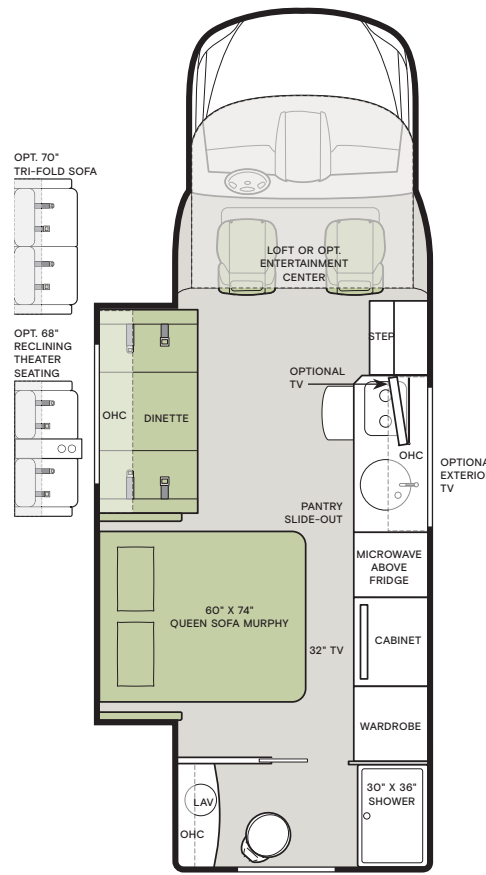
25 TW



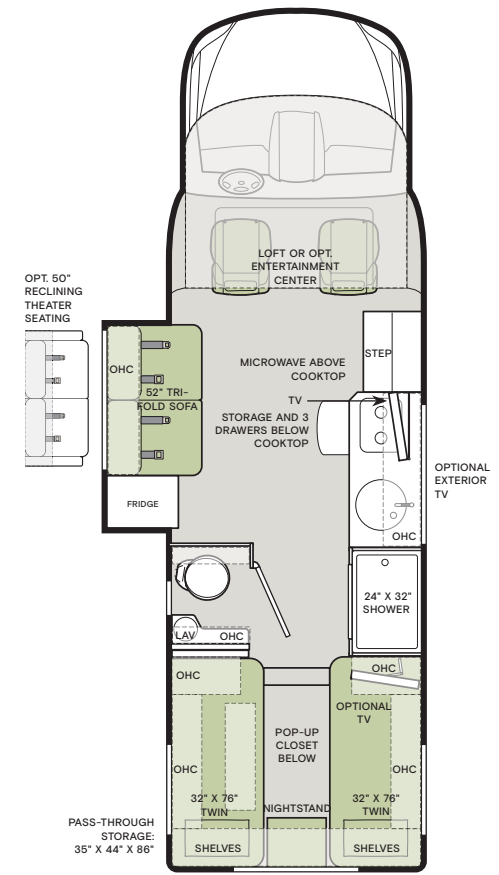
25 SW



25 RW



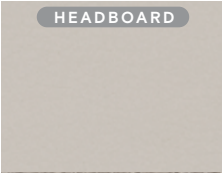



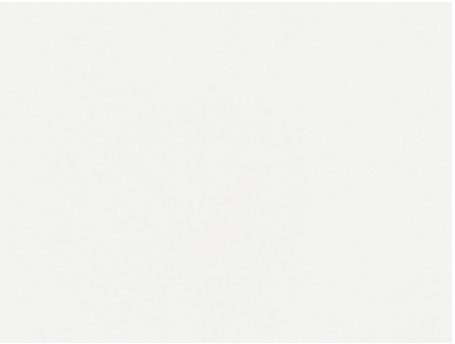





25 LW



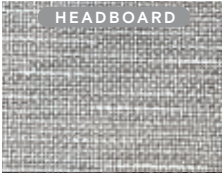


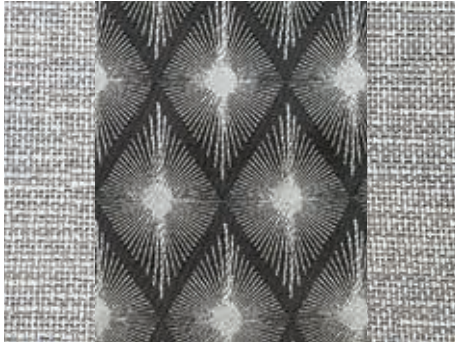






Interior Décor

Make it all yours. Personalize your décor experience with the Wayfarer's customization options. Choose between our four décor packages, as well as handcrafted wood cabinetry. The Wayfarer's luxury design options allow you to arrive and live in style, wherever your travels and adventures take you.

OASIS

| | | | |
|---|--|---|--|
|  HEADBOARD |  PILLOW |  BED COVER |  WINDOW TREATMENT |
|  BEDROOM |  FURNITURE |  COUNTERTOP |  WALLCOVERING |
|  FLOORING |  WALLCOVERING | | |

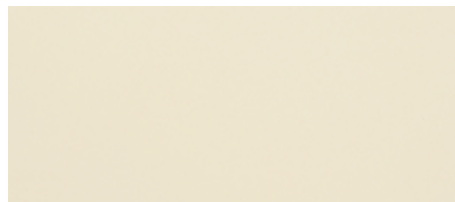
MINK

| | | | |
|---|---|---|---|
|  HEADBOARD |  PILLOW |  BED COVER |  WINDOW TREATMENT |
|  BEDROOM |  FURNITURE |  COUNTERTOP |  WALLCOVERING |
|  FLOORING |  WALLCOVERING | | |

CABINETS



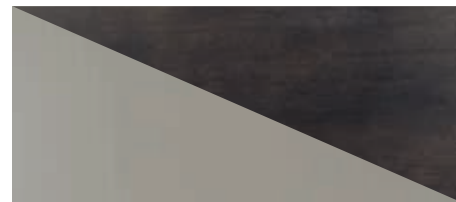
RUSSET



LINEN



SANDSTONE



ACIER GREY/CHATEAU¹

CHAMPAGNE



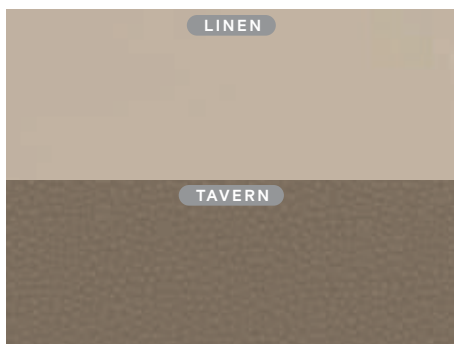
BEDROOM



WINDOW TREATMENT



COUNTERTOP



FURNITURE



FLOORING



WALLCOVERING

STERLING



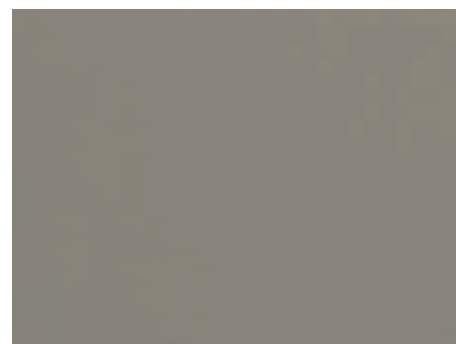
BEDROOM



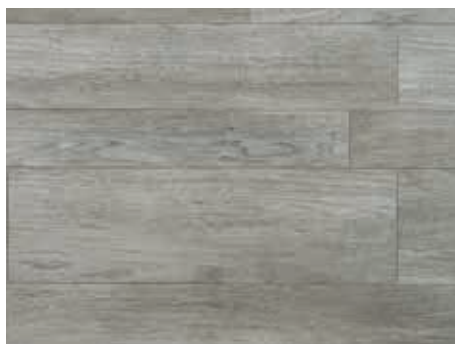
WINDOW TREATMENT



COUNTERTOP



FURNITURE



FLOORING



WALLCOVERING

¹ Acier Grey and Chateau is only available with Sterling or Mink

Specifications

MERCEDES-BENZ 3500XD DUAL WHEEL CUTAWAY CHASSIS

CHASSIS FEATURES

- 3.0 6-cylinder Turbo Diesel Engine with 7-speed Automatic Tip Shift Speed Transmission 188 HP/325 lb Torque
- Aluminum Wheels
- SumoSprings Ride Assist System
- BigFoot® Hydraulic Leveling System
- GVWR- 11,030 lb
- GCWR- 15,250 lb
- GAWR Front- 4,410 lb
- GAWR Rear- 7,720 lb
- 170.3" Wheel Base
- 24.5 Gallon Fuel Tank
- 4.8 Gallon DEF Tank¹
- 5,000 lb Rated Hitch with 500 lb Vertical Tongue Weight and 7-pin Connector

SAFETY FEATURES

- Attention Assist
- Traffic Sign Assist
- High Beam Assist
- Active Brake Assist (Collision Mitigation)
- Lane Keeping Assist
- Load Adaptive Electronic Stability (ESP)
- Active Distance Assist Distronic (Adaptive Cruise Control)

DRIVER'S COMPARTMENT

- MBUX Multimedia System with 10.25" Touchscreen
- Intelligent Navigation
- Smartphone Integration For Apple Carplay® and Android™ Auto
- Tray for Smartphones with Charging Ports
- Instrument Cluster with Color Display
- Leather Wrapped Steering Wheel with Integrated Controls
- Emergency Call System
- Wireless Internet Access
- Keyless Start
- Power Cab Door Locks and Windows
- Windshield with Filter Band
- Rain Sensor for Windshield Wipers
- Manual Parking Brake
- Heated/Electric Adjustable Mirrors
- Optional Side-view Cameras
- Black Leather, Heated, Power Adjustable Driver and Passenger Seats (Both with Swivel Base)

¹ Diesel Exhaust Fluid (DEF) is the active component used in Selective Catalytic Reduction (SCR) engines to reduce nitrogen oxide emissions by 90% to meet EPA standards.

| WEIGHTS AND MEASURES | 25 TW | 25 RW | 25 LW | 25 SW |
|---|----------|----------|----------|----------|
| Overall Length (approximately) ² | 25' 8" | 25' 8" | 25' 8" | 25' 8" |
| Overall Height (max.) | 11' 4" | 11' 4" | 11' 4" | 11' 4" |
| Interior Height | 80" | 80" | 80" | 80" |
| Overall Width ² | 90" | 90" | 90" | 90" |
| Interior Width | 87" | 87" | 87" | 87" |
| Fresh Water (gal.) | 38 | 25 | 32 | 38 |
| Black Water (gal.) | 28 | 28 | 28 | 28 |
| Grey Water (gal.) | 32 | 36 | 32 | 33 |
| LPG Tank (gal.) | 12 | 12 | 12 | 12 |
| Basement Storage (cubic ft – app.) | 68 | 37 | 130 | 54 |
| Trailer Hitch Capacity ³ | 5,000 lb | 5,000 lb | 5,000 lb | 5,000 lb |

² The approximated coach width and length does not include side-view mirrors.

³ Tow ratings and ability are subject to gross combined weight ratings on the tow vehicle.

PLUMBING AND ELECTRICAL

- Truma® Comfort Plus Instant Hot Water Heater
- Spyder Multiplex Coach Control System
- Two 12 V House Batteries (Group 27/180 Amp Hours)
- 30 Amp 110 V House Service
- Power Cord – 30' Permanently Attached
- 3.2 kw Diesel Generator
- 2000 Watt Inverter Pure Sine
- 110 V and 12 V House Load Center with Power Converter
- HD Over-the-air TV Antenna
- Prep for Satellite
- Pre-wired for Solar Panels
- 15 K Mid Air Conditioner
- Park Cable and Ground Satellite Hook-up
- Wall-mount Thermostat with Built-in Temperature Sensor
- 30 K BTU Propane Ducted Furnace
- 12 V Engineered Wiring Harnesses
- Heated Holding Tanks

| ELECTRICAL OPTIONS | 25 TW | 25 RW | 25 LW | 25 SW |
|---|-------|-------|-------|-------|
| Complete Solar System with 190 Watt Solar Panel | O | O | O | O |
| Wi-Fi Ranger with LTE | O | O | O | O |
| In-motion Satellite | O | O | O | O |
| Lithium Battery Drop-in Solution | O | O | O | O |

EXTERIOR

- Girard® 16' Wind Sensor Awning with Speakers
- Automatic Lights in Exterior Compartment Doors
- Entrance Door Assist Handle

| EXTERIOR OPTIONS | 25 TW | 25 RW | 25 LW | 25 SW |
|------------------|-------|-------|-------|-------|
| Exterior TV | O | O | O | O |

INTERIOR

- Stereo System with Separate Speaker Zones
- LED Lights
- Privacy Shades
- 2 Captain's Chair Lounge Cushions
- Soft Vinyl Ceiling
- Combination Carbon Monoxide and Propane Detector
- Fan-Tastic Vent Fan
- Swivel Tables

| INTERIOR OPTIONS | | 25 TW | 25 RW | 25 LW | 25 SW |
|---|---------------------------------|-------|-------|-------|-------|
| Handcrafted Cabinetry | Russet | O | O | O | O |
| | Acier Grey/Chateau ⁴ | O | O | O | O |
| | Sandstone | O | O | O | O |
| | Linen | O | O | O | O |
| | Champagne ⁵ | O | O | O | O |
| Fabric Suites | Oasis | O | O | O | O |
| | Mink | O | O | O | O |
| | Sterling | O | O | O | O |
| | Reston Ivory | S | S | S | S |
| Wallcovering | S | S | S | S | |
| Central Vacuum System with Retractable Hose | O | O | O | O | |
| Privacy Curtain | — | O | — | — | |

⁴ Acier Grey and Chateau is only available with Sterling or Mink.

⁵ Champagne is available with Linen or Tavern Leatherette.

LIVING AREA

- House Radio/DVD/Bluetooth
- Flush Mount Windows
- Overhead Bunk

| LIVING AREA OPTIONS | 25 TW | 25 RW | 25 LW | 25 SW |
|--|-------|-------|-------|-------|
| Living Area TV | S | O | S | S |
| Face-to-face Booth Dinette – Driver Side | — | S | — | S |
| 70" Sofa w/Trifold Hide-a-bed (54" x 74") – Driver Side | — | O | — | O |
| 50" Sofa w/ Trifold Hide-a-bed (42" x 74") – Driver Side | S | — | S | — |
| 68" Electric Theater Seats – Driver Side | — | O | — | O |
| 50" Electric Theater Seats (No Cupholders) – Driver Side | O | — | O | — |
| Overhead Entertainment Center | O | O | O | O |

KITCHEN

- LP Cooktop with Built-in Cover
- Convection Microwave
- Single Bowl Sink
- Designer Faucet
- Over-the-counter Lighting
- Under-the-counter Lighting
- Fire Extinguisher
- 110 V Outlet
- Countertop Extension

| KITCHEN OPTIONS | 25 TW | 25 RW | 25 LW | 25 SW |
|--|-------|-------|-------|-------|
| 12 V 5 Cubic Foot Refrigerator | S | — | S | — |
| 12 V 6.5 Cubic Foot Refrigerator | — | S | — | S |
| Gas/Electric 5 Cubic Foot Refrigerator | O | — | O | — |
| Gas/Electric 6.5 Cubic Foot Refrigerator | — | O | — | O |

BEDROOM

- Inverted Outlets in Bedroom for CPAP Machine
- USB Port with 110 V Plug
- Wardrobe
- LED Reading Lights

| BEDROOM OPTIONS | 25 TW | 25 RW | 25 LW | 25 SW |
|---|-------|-------|-------|-------|
| Bedroom TV | O | S | O | O |
| Queen Sofa Murphy Bed (60" x 74") | — | S | — | — |
| Two Twin Mattresses (32" x 76") Converts into King Bed (86" x 76") | S | — | — | — |
| Two Twin Mattresses (32" x 76") Pop-up Closet Storage on Driver Side | — | — | S | — |
| Queen Mattress (60" x 74") | — | — | — | S |

BATHROOM

- Vanity Storage
- Fan-Tastic Vent Fan
- Porcelain Vessel Sink with Chrome Faucet
- Shower Head Adjustable for Height
- LED Lighted Mirror

| BATHROOM OPTIONS | 25 TW | 25 RW | 25 LW | 25 SW |
|---|-------|-------|-------|-------|
| One-piece Fiberglass Shower (30" x 36") with Skylight | — | S | — | — |
| One-piece Fiberglass Shower (24" x 32") with Skylight | S | — | S | S |



The Wayfarer's Mercedes-Benz chassis delivers smooth, powerful handling with a full complement of advanced safety features.

- Automatic Transmission 7G-Tronic™
- 24.5 Gallon Fuel Tank
- Instrument Cluster with Color Display
- Electronically Adjustable Driver and Passenger Seat
- Heated Driver and Passenger Seat
- Free Map Data Updates for Three Years



EFFICIENT DIESEL ENGINE With turbocharged power, 325 lb-ft of torque, and diesel fuel economy, the new Sprinter's impressive 6-cylinder engine delivers power and durability in one compact package.



7G-TRONIC PLUS 7-SPEED AUTOMATIC TRANSMISSION The low first gear and overdrive high gear in the new Sprinter's 7-speed automatic transmission help you accelerate from a stop and conserve fuel on the highway.

SAFETY FEATURES



ATTENTION ASSIST® helps prevent drowsy driving by monitoring your driving patterns and providing an early warning in case fatigue is detected.



ACTIVE BRAKE ASSIST is an advanced system that senses the likelihood of a collision with a vehicle ahead and sends both a visual and audible warning followed by initiating autonomous braking.



ACTIVE DISTANCE ASSIST DISTRONIC® is an intelligent cruise control system that senses traffic conditions and actively controls your speed to keep you at a safe distance.



TRAFFIC SIGN ASSIST uses a camera to give drivers additional help with identifying speed restriction signs, No Passing Zones, and No Entry signs.



LOAD-ADAPTIVE ELECTRONIC STABILITY PROGRAM (ESP®) is a dynamic handling system that actively intervenes to help keep the van firmly under control and safe by automatically braking individual wheels and reducing engine power to help stabilize the vehicle if wheelspin, understeer, or oversteer is detected.



HIGHBEAM ASSIST™ adjusts the high and lowbeam headlamps automatically, allowing for continuous adaptation to the prevailing traffic situation. The system helps ensure better and earlier recognition of the course of the road.



ACTIVE LANE KEEPING ASSIST can provide you with visual and audible warnings if your van leaves its lane unintentionally. A camera in the windshield monitors the road ahead and helps detect when you may have veered away from lane markings. There is an active element that will center you back in the lane if you cross the outside solid lines. This is accomplished with vector braking. This feature can help prevent vehicles from ending up in ditches or down a mountainside.

1

YEAR OR 12,000 MILES
LIMITED WARRANTY

3

YEARS PAINT
DELAMINATION
LIMITED WARRANTY

5



YEARS OR 100,000 MILES
CHASSIS POWERTRAIN
LIMITED WARRANTY

3

YEARS OR 36,000 MILES
MERCEDES-BENZ CHASSIS
LIMITED WARRANTY

1

YEAR COACH
ROADSIDE SERVICES

FOR PARTS & SERVICE CALL 205.487.4710 OR VISIT TIFFINMOTORHOMES.COM
625 FAWN GROVE ROAD, WINFIELD, AL 35594  



TIFFIN

MOTORHOMES

©2021 Tiffin Motorhomes, Inc. Allegro®, Allegro Breeze®, Allegro RED®, Phaeton®, Allegro Bus®, Zephyr®, Wayfarer®, Roughing It Smoothly®, Open Road®, PowerGlide®, Pusher® and Cahaba® are registered trademarks of Tiffin Motorhomes, Inc. All rights reserved.
For all information concerning the limited warranty provided by Tiffin, please refer to the full written limited warranty set forth on the Tiffin website or held by our authorized dealerships. Please note, some interior furnishings not included.