

Crown Royale

Signature Series

1995

By Monaco

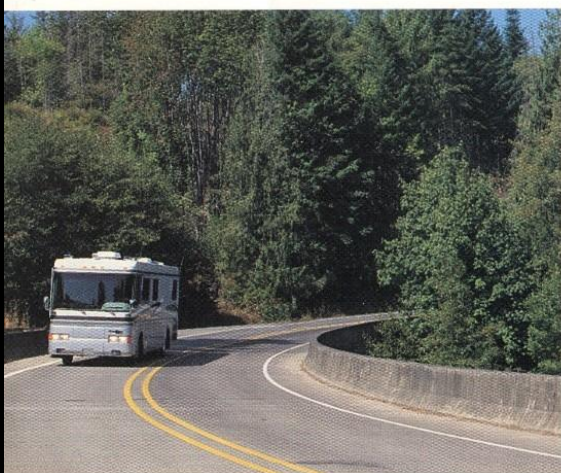


Relax *everything* except your expectations

People with an appreciation for innovative design and a taste for elegance are choosing

The Signature Series again this year. The reason is Monaco's penchant for meticulous engineering and quality which have given motorhome buyers a new standard of excellence. From the torque-rich 400 horsepower *Cummins* engine with enhanced fuel economy and performance to the new all-electric componentry model being introduced as options this year.

The Signature Series represents a new attitude in motorhome living. Bold and daring; blending classic elegance with a taste of high tech. The fragrance of leather upholstery and the richness of handworked woods with the tactile pleasures and keen precision of a well engineered driving machine.



State-of-the-art technology optimizes safety, handling and brake performance. ABS anti-locking disc brake system and Bilstein shocks enhance the balance and maneuverability of our famous Cushion Air Glide Suspension.



Stone Patina. An elegant interior of light and dark tones dancing in the late afternoon sun. Rich walnut cabinetry blends with shades of cool pewter and taupe, and the delicate gilt threads of the intricate fabric patterns play against the neutral tones of the leather club chairs.

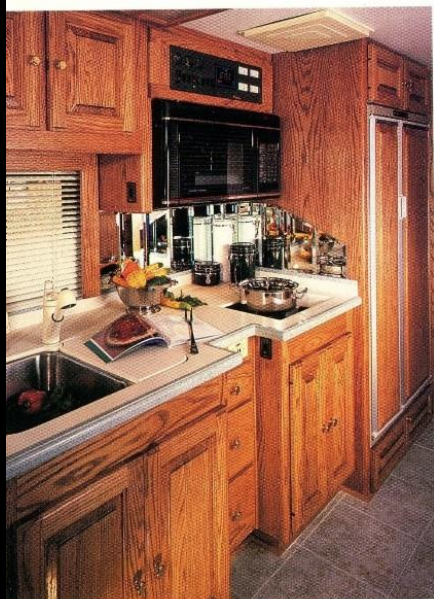
Some people have a talent for travel

People who look upon motorhome living as a tranquil
antidote to today's fast paced world turn to the

Signature. With unerring dependability, this thoughtfully conceived motorhome sets the mood: sumptuous or casual, entertaining or relaxed. This soothing *Silver Aspen* interior is a garden of earthly delights nestled in a perfect climate-controlled environment. The Signature's Aqua Hot continuous hot water heating system allows you to set individual temperature controls for the living, dining and sleeping areas. It also provides plenty of dependable hot water for bathing, laundry—even preheating the engine on cold days for quick, safe starts!

A spacious expanse of easy-care Corian® countertops and handsome stained oak cabinetry makes cooking a pleasure. Deep double bowl stainless steel sinks with designer faucets and Insta-Hot water tap offer convenience along with the built in ice-maker and countertop food blender. The large side-by-side refrigerator/freezer shown here with inset wood panel doors is an available option.

In the spacious queen sized bedroom you will enjoy (a) fingertip remote control of the 20" built-in color TV, as well as the (b) stereo AM/FM and cassette player at your bedside. (c) In the living area, a remote controlled 10 disc CD player and VHS/VCR provide entertainment along with another 20" color TV.



Explore new directions

The spirit of distant lands wafts through The Signature's *Windrift* interior. Plush leathers are tailored with old world

craftsmanship and carefully stitched English brocades splash their luxurious floral patterns over the dining seating and sofas. The provenance is all-American but the heritage is global.

These worldly inspirations include important, down-to-earth amenities. In the Gourmet Galley, you will find a complete array of modern conveniences and well planned storage. You can choose from a selection of natural or stained oak, walnut or cherry wood cabinetry that has been hand-crafted to a mellow finish.



Stretch out and enjoy a full sized bath and Euro-design spa shower. Deep shelved natural oak cabinetry provides storage and also holds a washer/dryer (available in some models).



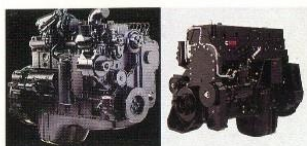
Sparkling brass fixtures and the smooth elegance of Corian® sink and countertops are framed by a walnut vanity in this Signature Series interior.



This *Windrift* interior featuring Natural Oak is an enchanting port o'call.



Cummins 6C8.3 turbo-charged diesel. At 300hp, this engine is standard for the Signature Series.



Cummins M11 400hp turbo-charged diesel engine. This '95 option features Cummins' COMMAND concept for outstanding performance, precise control of road speed and improved fuel economy.



Bilstein shock absorbers add comfort and greater stability to the 8 outboard mounted airbags of the Cushion Air Glide Suspension.

Monaco is an unrepentant believer in the power of pure design and the elegance of engineering to convey quality in a motorhome. We go way beyond the simple arrangements of electronic components and steel on a chassis.

There's a wholeness to each Monaco motorhome—a smoothly unified, fully integrated world a driver can experience the second the ignition key is turned. The rewards that follow are many: swift



Electronically controlled fog and frost proof heated side mirrors.

and sure-footed motorhome travel on highways, hills and around corners. All experienced amid sumptuously comfortable surroundings.

At the vanguard of Monaco's engineering innovations is The Signature Series. This year a powerful 400hp Cummins rear engine turbo diesel is an available option. Monaco's superior ride and handling has been enhanced even more with Bilstein Shocks mounted outboard

with the 8 airbags of the Cushion Air Glide Suspension system. It's a driving experience of uncompromising comfort, security and reliability.

It all begins with Monaco's own heavy duty Roadmaster chassis. At our Indiana and Oregon manufacturing plants we design and build each chassis to fit the particular structural requirements of our luxury motorhomes. With the latest manufacturing methods and quality controls, we are able to smoothly integrate all structural elements

The Roadmaster heavy duty chassis has been developed and manufactured to specifically meet the intricate engineering requirements of luxury motorhomes.



The 10KW Generator is quietly housed away from sleeping and living areas in a slide out compartment at the front of the coach.



Two 4-D (Deep Cycle) house batteries and 8-D chassis batteries are stored in a convenient slide-out compartment. (The M-11 400hp engine has two 31 P-PHD batteries)



The sleek roof design incorporates the rear view camera with one-way audio and an aerodynamic rear air intake.

starting with our Semi-Monocoque framing. Here a network of 1 1/2 inch and 3 inch extra-strength tubular steel provides overall support and stress reduction.

Living comfort is ensured in all climates with The Signature's seamless one-piece fiberglass roof, aluminum underbelly and welded wall frames with five layers of permanently bonded insulation and wall materials.

Wrapping up this impressive package is a sleek, aerodynamic Shinoda-designed body style. The bold lines of the one-piece front windshield are carried around to lustrous sweeping graphics. Because the exterior fiberglass has been impregnated with the painted graphics and sealed with three coats of scratch-resistant Clear Coat, you can enjoy the beauty of your Signature for years to come.



Crown Royale Signature Series Roadmaster Chassis Model R-3500

Diesel Engine: • (Standard) Cummins 6C 8.3 300hp Turbo Diesel w/Exhaust Brake • (Optional) Cummins M11 400hp Turbo Diesel w/Cummins Jake Brake

Transmission: • (Standard) Allison 6 speed MD 3060 Electronic Transmission w/Cummins 6C 8.3 300hp • (Optional) Allison HD 40-60 World 6-Speed Transmission w/Cummins M-11 400hp Turbo Diesel

Air Brakes: Dual Air Brake System 16.5 x 5 (Front); 16.5 x 7 (Rear)
ABS Brakes: All wheel Midland/Grau ABS Anti-Lock Disc Braking System

Frame: 102" Widebody Semi-Monocoque 1 1/2 inch Tubular Steel Construction

Steering: Ross TRW Integral Power Steering Gear, Engine driven Hydraulic Pump with Remote Reservoir

Axles: Front: Rockwell 12,300 lb. "Easy Steer" w/ 50 degree turning angle
Rear: Rockwell 23,000 lb. (5.29:1) 300hp 6C 8.3 Diesel Engine
Rear: Rockwell 23,000 lb. (4.33) 400hp M-11 Diesel Engine

Track: 93" Outside to Outside Front and Rear

Air Suspension: Cushion Air Glide w/8 outboard-mounted air bags and Bilstein shocks

GVWR: 38' — 35,000 lbs. 40' — 35,000 lbs.

Wheels: 4 Alcoa Polished Aluminum 24.5, 2 Budd Steel Inner Rear duals Stainless Steel Hub and Nut covers

Tires: 285/75R/24.5 Steel belted radials

Radiator: Rear Side Mounted

Dimensions: Exterior Height: 11' 10" to top of air conditioner

Wheelbase: 246" on 38' models; 270" on 40' models

Capacities: 100 gal Fresh Water; 50 gal Black Water; 50 gal Gray Water; 197 gal Useable Diesel Fuel on Front Entry model, 191 gal Useable Diesel Fuel on Side Entry model; 42 gal LP



Living Comfort and Convenience

- Stained or Natural Oak Cabinetry
- Designer Interiors
- Leather Club Chairs or Loveseat
- Remote Controlled VHS/VCR
- 20" Remote Control TV in Living Room
- 20" Remote Control TV in Bedroom
- TV Antenna w/Power Boost
- 10 Disc CD Player
- AM/FM Cassette Stereo
- Corian Countertops in Galley and Bath
- Microwave/Convection Oven - GE
- Water Purifier
- Ice Maker
- Insta-Hot Water Tap
- Portable Vacuum Cleaner
- Cedar-lined Closets
- Carpeted Cabinets



A built in washer/dryer is a convenient option.

- Dual 13,500 BTU Ducted Roof Air Conditioning with heat strips/Thermostat Controlled
- Water Manifold System
- AQUA HOT Continuous Hot Water Heating System
- Fire Extinguisher and Smoke Detector
- Microphore Toilet
- 2 Burner Range Top w/Cover
- Large Double Door Refrigerator/Freezer
- Power Ceiling Vent in Bath
- Premium Quality Mattress
- Designer Leathermate Pilot/Co-Pilot Seats w/6-way Power Adjustment
- Deluxe Tilt/Telescoping Steering Wheel
- 40 Channel Hand Held CB
- Designer Tile Floor in Kitchen and Bath
- Bronzed Thermopane Windows
- Automatic Front Entry Step Cover

The easy to read monitor panel shows status of fresh water, grey and black water, LP tank, battery condition and Heart interface.



Optional

- All Electric Componentry Coach
- Cummins M11 400hp Turbo Diesel w/Allison 6 speed HD 40 60 World Transmission
- Pickled Oak Cabinetry > stained oak
- Walnut Cabinetry
- Natural Cherrywood Cabinetry
- Front Door, Screen and Awning
- Deluxe Blender
- Washer/Dryer (some models)
- Leather or Fabric Recliner
- Corian Kitchen Sink
- Solar Battery Charger (2 panels w/regulator)
- Side-by-side Refrigerator/Freezer (some models)
- Custom Security by TREK MATE
- mud flap - 34" x 22"
- ladder & roof rack

Intangibles make the difference

between merely good

and truly valuable.

Monaco makes the difference

At Monaco, we know you're looking for a luxury motorhome that will enhance your lifestyle and also give you years of carefree travel. Our desire

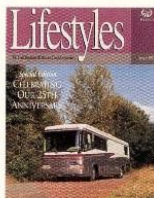
to satisfy your needs is a critical part of our success. Initially, you will notice it in the personal attention you receive from our knowledgeable sales and service personnel. Eventually, it will become apparent in other ways.

Monaco Clubs, Rallies and More!



When you join one of the Monaco owners' clubs, you can't help but notice that meeting and traveling with friends adds something special to your trip. Monaco sponsors many Club activities including half a dozen large rallies held during the year. Here great entertainment, good food and exciting tour excursions are blended with seminars, free technical service, workshops and the latest innovations in motorhome travel.

Lifestyles, published by Monaco, highlights interesting trips, places to see, club activities and special news about ongoing events throughout the year



24 Hour Emergency Service

The Monaco Roadside Assistance program will give you additional peace of mind. It provides emergency roadside assistance 24 hours a day, 365 days a year to Monaco owners anywhere they travel in the U.S. or Canada. Whether you're just locked out, need a tire change, need fuel or require a tow to the nearest qualified RV repair facility. Just dial the toll-free Emergency Road Service number and you can be assured that a professional RV emergency repair and towing specialist will respond to your call.



Emergency road assistance 24 hours a day, 365 days a year to Monaco owners anywhere they travel in the U.S. or Canada.

Get the Grand Tour At Monaco!

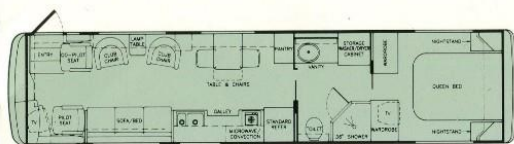
Monaco is proud to invite you to visit one of our newly expanded manufacturing facilities in Oregon or Indiana. Call 1-800-634-0855 for easy directions and to confirm plant hours. Signature owners expect satisfaction beyond the motorhome itself. And they get it!

That's the Monaco difference!

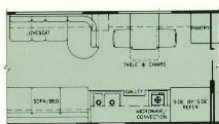


FLOORPLANS

Optional Twin Beds are available on all floorplans shown.



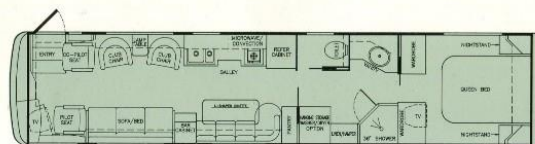
38' GOVERNOR II Front Entry Door



38' GOVERNOR II Side by Side Ref and Loveseat Option



Garden Tub Option



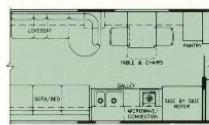
40' CAMBRIDGE Front Entry Door



40' PREMIER Front Entry Door



38' GOVERNOR Front Entry Door



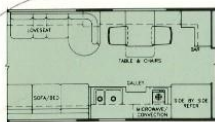
Side by Side Ref and Loveseat Option



40' PRESIDENT Front Entry Door



40' ADMIRAL Front Entry Door



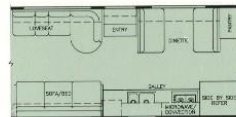
ADMIRAL Side by Side Ref and Loveseat Option



42" Shower Option



40' MONARCH Side Entry Door



Monarch Side by Side Ref, Dinette and Loveseat Option



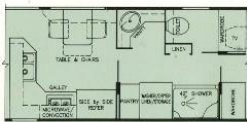
Garden Tub Option



Facing Dinette Option and 42" Shower



Side by Side Ref Option and Loveseat



Side by Side Ref Option and 42" Shower



40' MONACO Front Entry Door



The Signature's Front Door Entry models include an air activated step well cover, screen door and awning for added protection.



Large pass-through storage bays feature slide-out "Joey" beds for convenience.

FEATURES

Mechanical

- Computerized Hydraulic Levelers
- 10 KW Slide-Out Diesel Generator
- Alternator 200 AMP
- Heart 2500 Watt Inverter
- 50 AMP Electrical Service
- Emergency Battery Start Switch
- Automatic Air Discharge System
- Bilstein Shock Absorbers
- Surge Protector

Exterior

- Seamless 1-piece Fiberglass Roof
- Aluminum Underbelly
- Bus Style Storage Bays
- Rear View Closed Circuit TV System
- Audible Reverse Warning System
- Back Up Flood Lamps
- Remote Control Heated 2-way Adjustable Mirrors
- Quad Rectangular Halogen Headlamps
- 12 volt On/Off Switch at Entry
- Patio and Window Awnings
- Docking Lights
- Locking Fuel and Water Access Doors
- Electric Entry Step
- Lighted Utility Center (telephone, cable TV, water, electric hook-up)
- Engine Compartment Illumination

Exterior Color

- Canyon Mist
- Stone Patina
- Windrift
- Silver Aspen



Monaco's policy of continuous product improvement makes all equipment (standard or optional), brand names, specifications and model availability, subject to change without notice. We reserve the right to make those changes, but we are happy to verify any item by motorhome serial number.