

Mountain Aire®

Fifth Wheels ♦ Class A Motorhomes ♦ Diesel Pushers



1998 Mountain Aire Fifth Wheel



1998 Mountain Aire Class A Motorhome

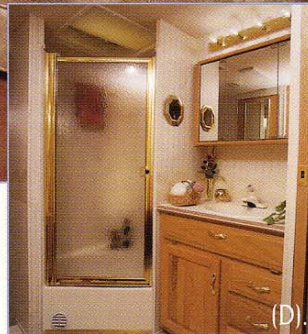


1998 Mountain Aire Diesel Pusher

1998
By Newmar

Mountain Aire[®]

Fifth Wheels from Newmar



Mountain Aire Fifth Wheel

Recreational vehicles are, perhaps, one of the best ways to express your freedom. Wherever your destination, take to the road in style.

- A. The dining area features plenty of storage space and the view!
- B. Comfort in Newmar style is easy in this spacious slideout room.
- C. Nightstands are positioned conveniently on each side of the queen size walk-around bed.
- D. You will appreciate the well-planned bath with a corner shower arrangement.
- E. Plenty of storage space is a priority in every Mountain Aire.



(A).



(B).



(C).



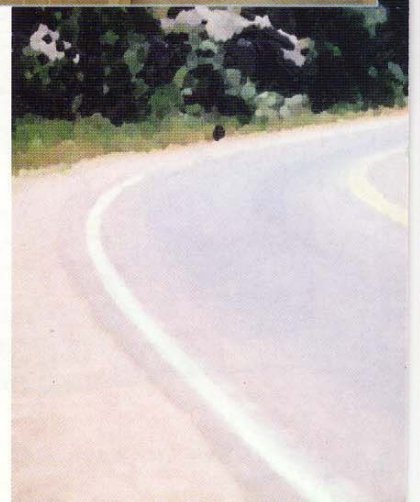
(D).



(E).

Think of your Mountain Aire Fifth Wheel as your expression of freedom. Big, comfortable surroundings to pamper you and functional durability to make your freedom enjoyable and trouble-free. Once you arrive at your destination, you'll discover how quick & easy it is to set up. There are five interior color selections available in the 1998 Mountain Aire Fifth Wheel units along with new exterior graphics that are available in two colors.

- A. *The optional dresser center in this Mountain Aire 5th Wheel has an abundance of storage space plus a cabinet for your own private TV.*
- B. *Double-arched cabinet doors and fine optional hardwood maple cabinetry house the entertainment center.*
- C. *A well-planned desk adjacent to the kitchen is a popular spot.*
- D. *The patented flush floor slideout provides plenty of room for living and dining.*
- E. *Solid surface counter tops are standard in the Mountain Aire 5th Wheel.*



Mountain Aire®

Class A Motorhomes from Newmar



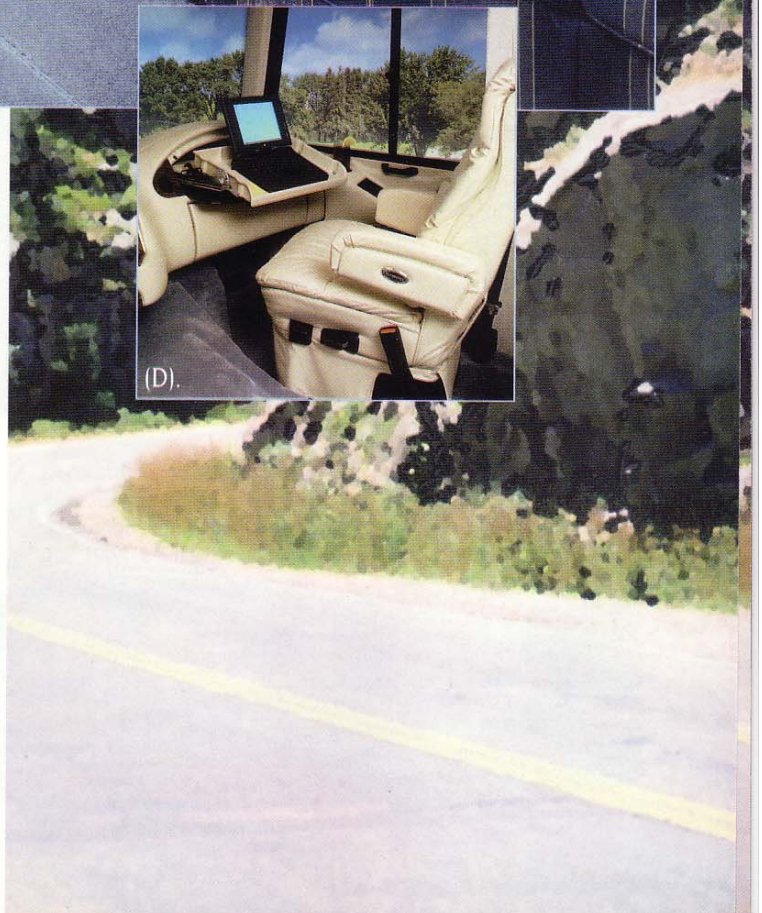
- A. Fine hardwood cabinetry surrounds built-in appliances in this popular Mountain Aire model.
- B. Lighter oak cabinetry and solid surface counter tops are standard features in the Mountain Aire Class A.
- C. The expansive slideout in this Mountain Aire Class A extends both the living and dining room areas. With Newmar's flat floor design, the slideout recesses, meeting the existing floor.
- D. A built-in desk-tray slides into place and tilts to your desired position.



(C).

Mountain Aire by Newmar - the ultimate Class A Motorhome. You'll receive many an admiring look in this beautiful new motorhome. And, no matter how discriminate their assessment, the luxury and comfort designed and built by Newmar becomes a treasured refinement you will enjoy for many miles ahead.

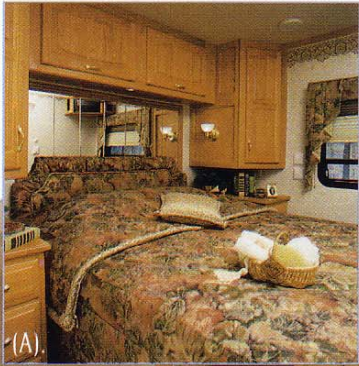
The professional style of Newmar's skillful interior design is richly displayed in five new color schemes, with two new exterior designs also available. Lighter oak is the standard interior woodgrain with frosted maple and cherry as popular options. The driver and passenger seats are larger for added comfort and a plush recliner with headrest is offered as a standard feature. The Class A also features a superior Granning Air Ride® suspension on tag axle models.



(D).

Mountain Aire®

Diesel Pushers from Newmar



- A. The new decorative wallpaper border and wall lights add an elegant touch to the Mountain Aire master bedroom.
- B. Here's a great place to stay organized in a comfortable setting. Note the elegant double arched cabinet doors.
- C. Beautiful lighter oak hardwoods carry a warm feeling throughout the kitchen and dining rooms.
- D. The slideout in this popular Mountain Aire floor plan is home to both the kitchen and living room areas.



Mountain Aire 40' Diesel Pusher



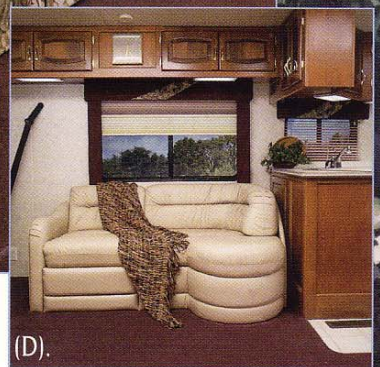
(A).



(B).



(C).



(D).



You'll find your motorhome dream adorned with richness in the Mountain Aire Diesel Pusher. Five newly designed interiors display the warmth of lighter oak as our standard woodgrain with frosted maple and cherry as popular options. And, for added comfort, we've increased the size of our driver and passenger seats. In addition to our new interior decors, we have two new exterior colors to offer. With all this luxury, you'll be ready to take to the road in classic style.

- A. *Decorative hardwood cherry trim frames this beautiful Mountain Aire slideout room.*
- B. *For 1998, a burled woodgrain insert has been added to the instrument panel. The driver and passenger seats have been enlarged for added comfort.*
- C. *Solid surface counter tops add a special touch to the bathroom in this popular model.*
- D. *Our L-lounge sofa option with incliner gives comfort a whole new meaning.*



1998 Mountain Aire Fifth Wheel



1998 Mountain Aire Class A Motorhome



1998 Mountain Aire Diesel Pusher

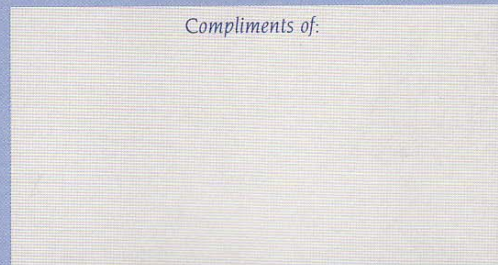
We invite you to visit our new state-of-the-art production facility in Nappanee, Indiana.

Plant tours are offered at 10:00 a.m. and 1:00 p.m., Monday through Friday.

Newmar Kountry Klub

Don't forget to check out the Klub—the Newmar Kountry Klub, that is. All you need for eligibility is to be a proud owner of any of the fine Newmar recreational vehicles.

Compliments of:



An American Tradition Of Excellence

355 N DELAWARE ST • PO BOX 30
NAPPANEE IN 46550-0030
PHONE (219) 773-7791 • FAX (219) 773-2895

Visit our website at <http://www.newmarcorp.com>

Some features shown in our literature are optional. Colors and finishes are photographic representations and may appear differently when viewing actual materials. Please see your dealer for actual samples and specifications.

Printed in the U.S.A.