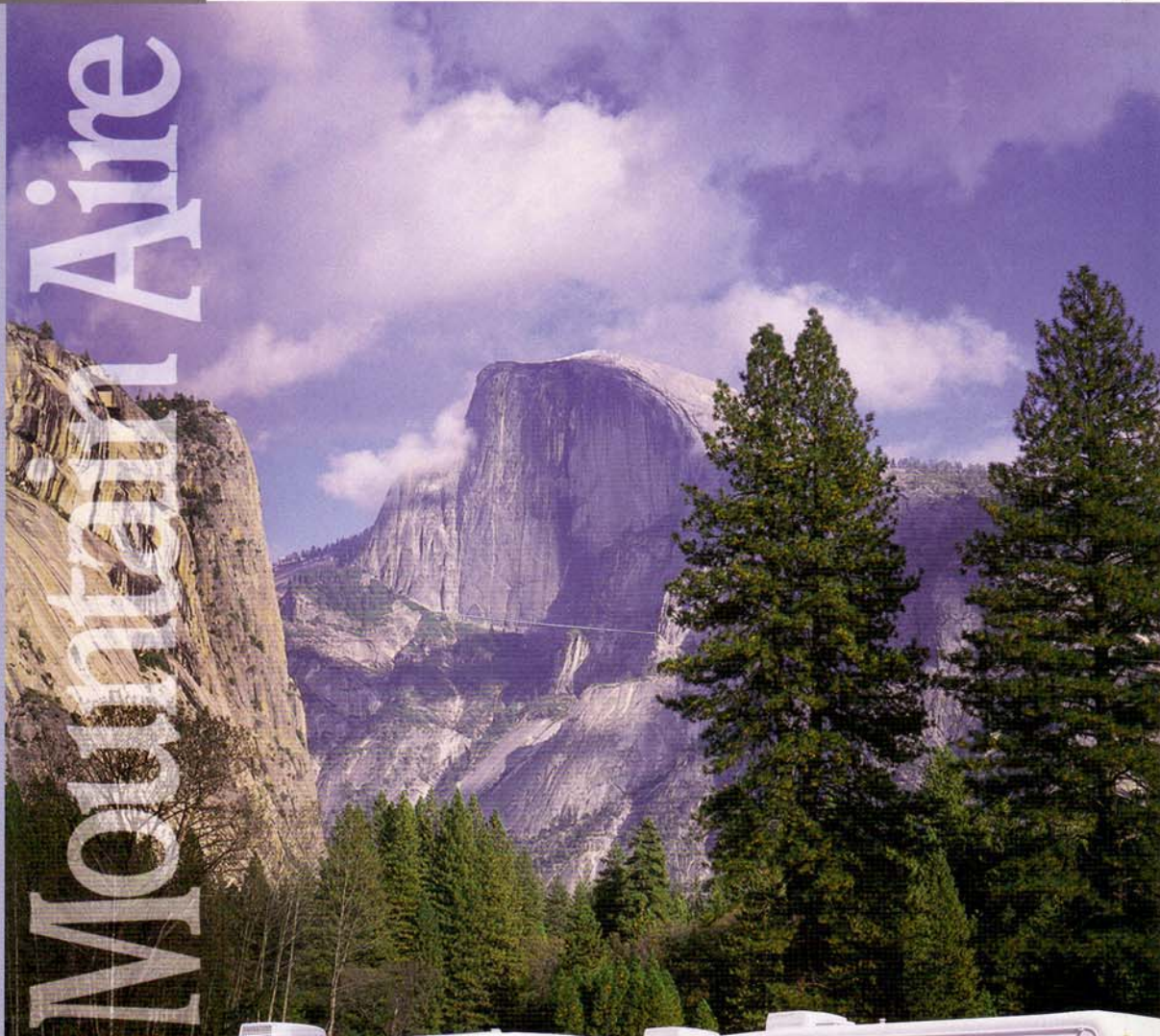


2000 MOUNTAIN AIRE BY NEWMAR

Mountain Aire



TRAVEL TRAILER • FIFTH WHEEL



CLASS A • DIESEL PUSHER



When you choose a Mountain Aire® Travel Trailer, you can feel confident that you have chosen a recreational vehicle of the utmost quality and workmanship. Since 1968, Newmar® has taken great pride in building exceptionally high-quality products using only the best materials and the latest technology.

The Mountain Aire Travel Trailer sports two new, modern exterior graphic packages in either True Blue or Gold Dust, plus four all new interior color schemes. The colors are beautiful — the choosing is the tough part. Pick from Beachcomber, Florentine Blue, Garnet or Willow Green to make your new Mountain Aire your choice and one to be proud of for years to come.



A V E L T R A I L E R B Y N E W M A R



3) The stylish master suite includes day/night pleated shades plus optional coordinated lambrquin window treatments.

4) There's 82" of interior height for a truly spacious interior while standing. You'll also enjoy the comfort of these two great glider recliners for a time of relaxation.



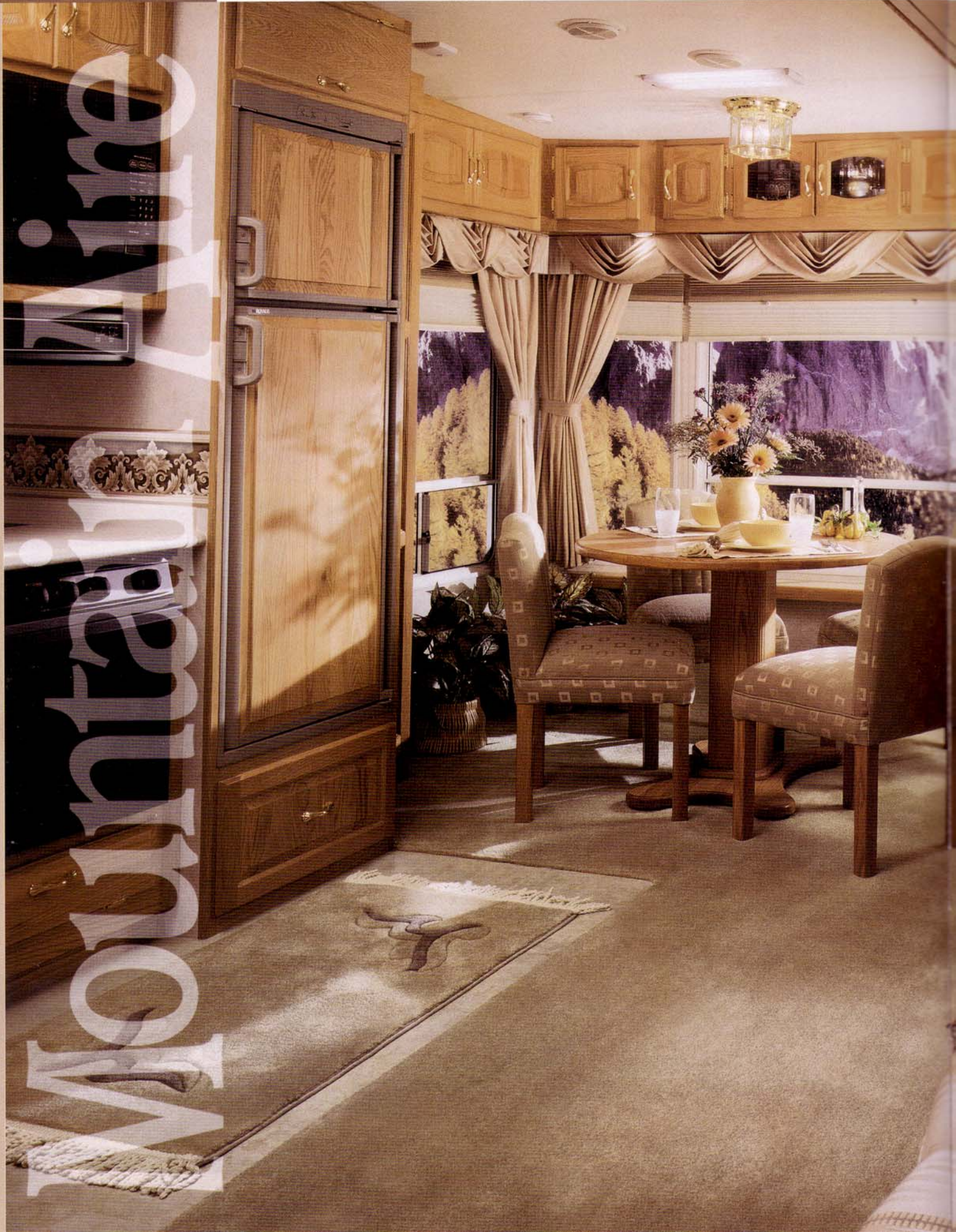
5) The slideout room provides additional space to this wonderful living area that also includes an elegant entertainment center.

6) You will never want to leave the dining room table while sitting in this beautiful room, handsomely decorated in our Willow Green interior color scheme.

1) Whether you're relaxing, dining or entertaining - there's room for everyone with the large, flat-floor slideout.

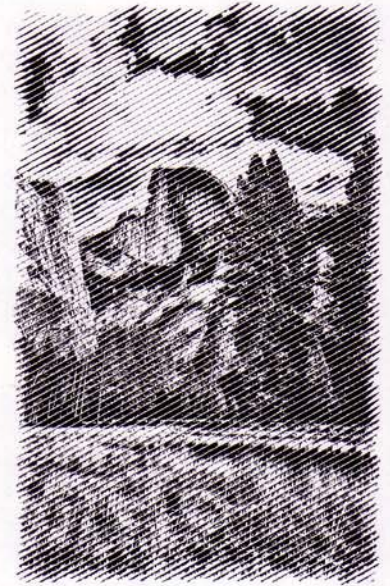
2) The efficiently designed Mountain Aire kitchen features a 22" 1.3 cf microwave, an electronic ignition range and a premium cast acrylic sink.





Mounts
Aire

I F T H W H E E L B Y N E W M A R



Even before you step inside a Mountain Aire® Fifth Wheel, you can see the deluxe difference. This is no ordinary recreational vehicle. This one says style, design, quality, roominess and value. This one says — Mountain Aire by Newmar®.

Once inside, you'll notice a "touch of class" throughout with beautiful hardwoods, plush fabrics and quality that follows through from room to room. Our four popular interior color schemes are Beachcomber, Florentine Blue, Garnet and Willow Green. Choose from True Blue or Gold Dust for the exterior that is expertly displayed in a new contemporary graphics package. No matter what color, style or floor plan you pick, we have a quality built Mountain Aire for you. We stake our name and reputation on it!

The spacious living, dining and kitchen area provides plenty of comfortable room without sacrificing style.



2)

3)

I F T H W H E E L B Y N E W M A R



4) Our patented flat-floor slideout provides a huge area for both dining room and living room.

5) The master bedroom has a walk-around queen size bed, plus plenty of rich cabinetry and storage areas.



6) The spacious island kitchen model, shown here in optional Washington Cherry, features an array of beautiful cabinets and name brand appliances, conveniently arranged.

7) The elegant entertainment center was designed with a custom slide/swivel TV shelf.



1) An optional fluted hardwood fascia board frames the elegant slideout room. The window treatments add special class to this warm and friendly room.

2) Newmar's attention to beautiful hardwood cabinetry (optional) is expertly displayed in this Mountain Aire® bedroom.

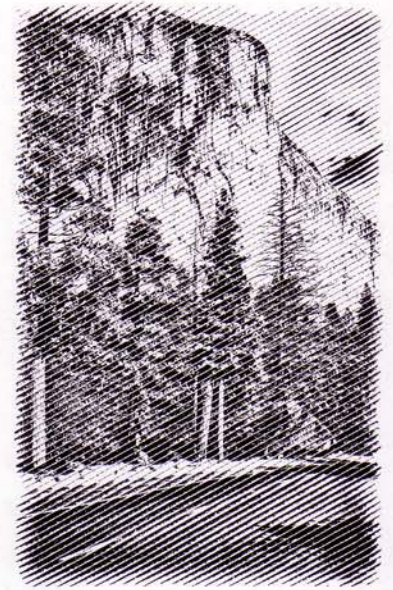
3) The master suite is well-planned with this spacious open bathroom adjacent to it.

2000

MOUNTAIN WAIRE

Mountain Aire





Enjoy touring scenic roads in your own Mountain Aire® from Newmar®. Your adventure begins the moment you settle in behind the wheel and discover unparalleled Newmar quality and beauty. As the industry pioneer of the patented flat-floor slideout, you'll experience the best in the business in uncompromising quality and design. Nestled in the heart of Amish Country in northern Indiana, our team of skilled craftsmen and design engineers have taken great pride in assembling a fantastic lineup of Mountain Aire Class A Motorhomes for 2000.

On the outside of the Mountain Aire Class A, make your selection from Classic Green, Sierra Beige or Blue Opal as your contemporary graphic statement. No matter what model or color you choose, you've made a great choice because it's a Mountain Air from Newmar.

Frosted Maple cabinetry surrounds a kitchen to dream of that includes Corian® countertops, a full array of appliances and a complementary plank floor.



1)



2)



3)

C L A S S A B Y N E W M A R



4)



1) Day/night pleated shades embrace a stylish dining area. Note the hardwood raised panel refrigerator front in the background.

2) A plush leather recliner matches the driver and passenger seats.

3) Our dinette converts easily into an excellent computer desk and work station.

4) A decorative, fluted hardwood fascia board sets the stage for our big slideout room. The hidden leaf dinette is joined by two folding and two upgrade dinette chairs.

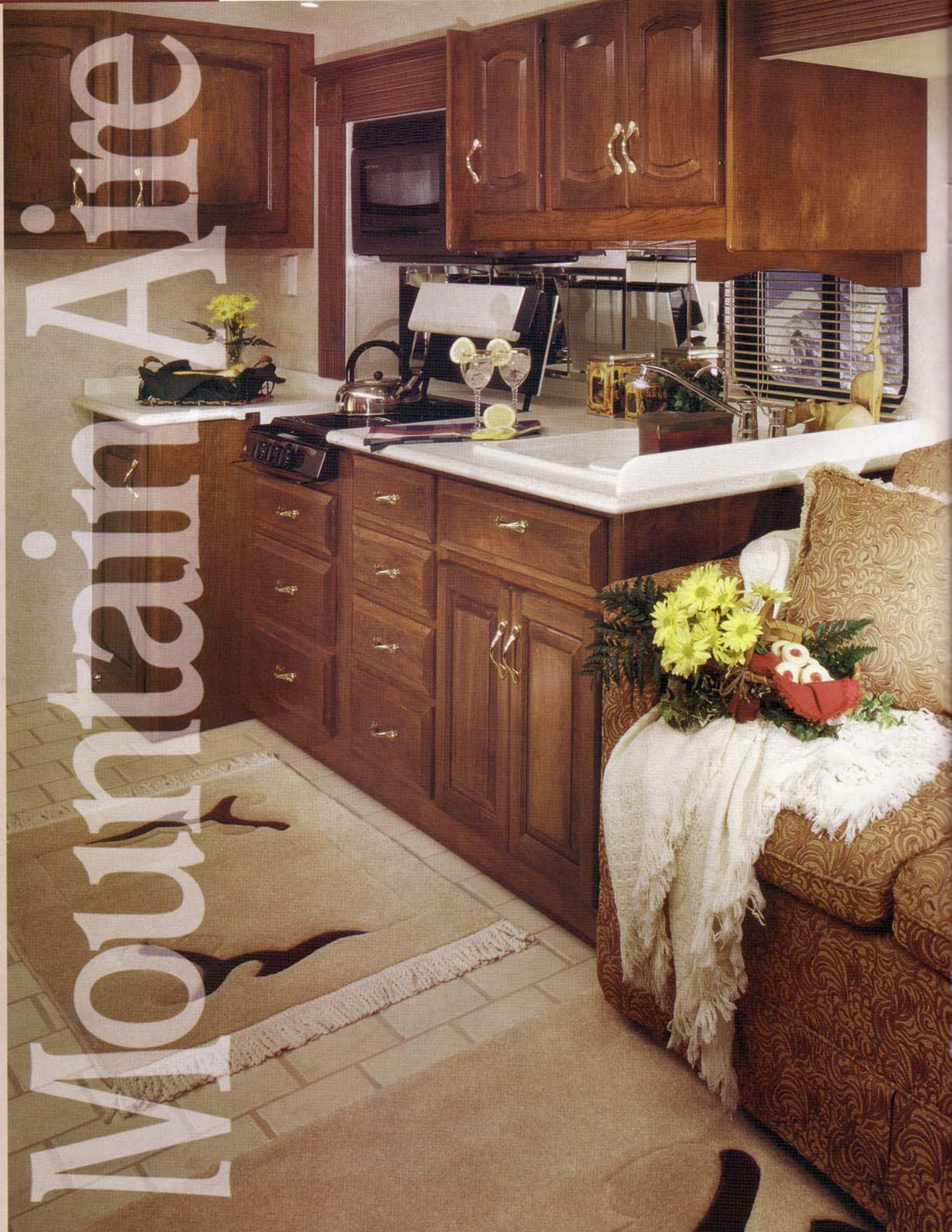
5) A beautiful bedspread with coordinating window treatments are stylish examples of the great decor found throughout the Mountain Aire®.

5)

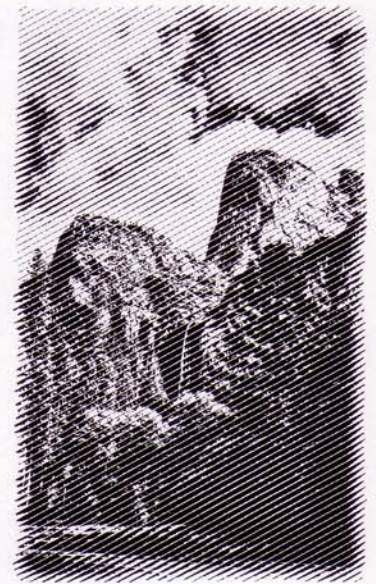


2000

MOUNTAIN AIRE DI



Mountain Aire



Mountain Aire's tremendous popularity over the years has never been a mystery. The offering for 2000 includes four new interiors in your choice of Beachcomber, Florentine Blue, Garnet or Willow Green. On the outside, new contemporary painted graphics are available on our smooth gel coated finish in Moonlight Suede, Sapphire or Willow Frost. But regardless of model or color, you'll be getting the kind of style and quality that has made the Mountain Aire® name synonymous with excellence ever since its introduction a decade ago.



A decorative sculptured inlay design in the living room carpet, plus a sculptured inlay area rug add a special touch to the kitchen and living areas.



1)

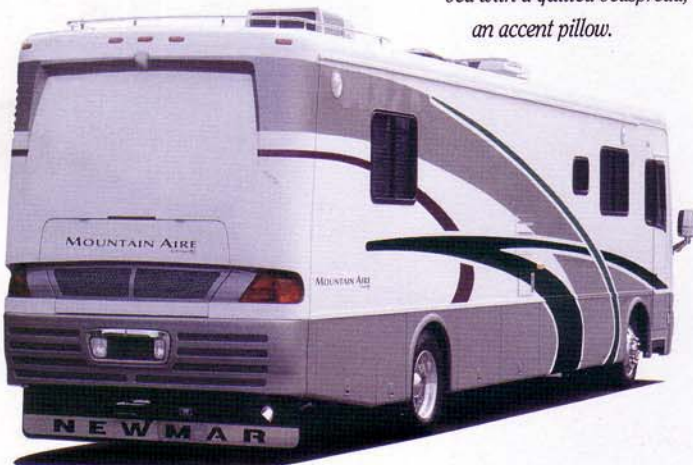
1) Rich colors in a warm atmosphere make this Mountain Aire® model in Garnet a favorite.

3) The big slideout room is home to a handsome dinette with our popular hidden leaf table.

2) An added feature in one of the wardrobes in this master bedroom includes cedar paneling.

4) You'll enjoy relaxing in this comfortable Flexsteel® recliner.

5) The big master bedroom includes a queen size bed with a quilted bedspread, reverse sham and an accent pillow.



2)

6) All the comforts of home are built-in to the kitchen, including a 30" convection microwave, a 3-burner recessed cooktop with electronic ignition and a Dometic 1062 refrigerator with ice-maker.

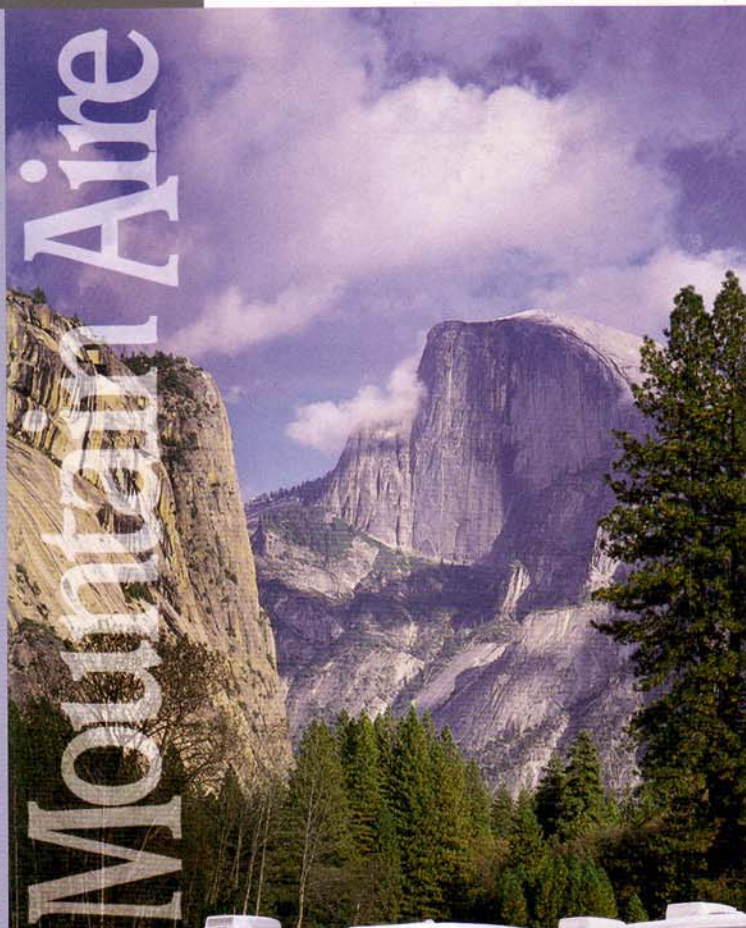
ESEL PUSHER BY NEWMAR



7) The Corian® countertops have a color-coordinated beveled edge and the sink features a single handle Moen faucet.

2000 MOUNTAIN AIRE BY NEWMAR

Mountain Aire



For more than three decades, Newmar® has been building America's most popular recreational vehicles. Right from the start - customers like you recognized that a Newmar recreational vehicle was something special. In a world of cookie-cutter RVs, a Newmar product has always stood out for its innovative features, outstanding performance and unparalleled quality. And, while we're proud of our tradition of excellence, we won't rest on our laurels. We're constantly refining our recreational vehicles to make them even better. We believe the models featured in this catalog are the finest we've ever built. And, we back them with a bumper-to-bumper, three year warranty.

Thanks for taking the time to look over our products. We sincerely hope you will become one of our many satisfied customers who have learned that Newmar truly is An American Tradition of Excellence.

M. Mahlon Miller
Mahlon Miller
Chairman of the Board

We invite you to visit our state of the art production facility in Nappanee, Indiana.

Plant tours are offered at
10:00 a.m. and 1:00 p.m.,
Monday through Friday.

NewmarKountryKlub

Don't forget to check out the Klub—the Newmar Kountry Klub, that is. All you need for eligibility is to be a proud owner of any of the fine Newmar recreational vehicles.



TRAVEL TRAILER • FIFTH WHEEL



CLASS A • DIESEL PUSHER

Compliments of:



An American Tradition Of Excellence

355 N DELAWARE ST • PO BOX 30
NAPPANEE IN 46550-0030
PHONE 219 773-7791 • FAX 219 773-2895
<http://www.newmarcorp.com>

2000 MOUNTAIN AIRE BY NEWMAR

Mountain Aire



TRAVEL TRAILER • FIFTH WHEEL



CLASS A • DIESEL PUSHER

STANDARD FEATURES

Air Conditioning & Heating

- 2-30# LP Gas Bottles w/Automatic Regulator In Slideout Rear Bumper
- 15M Brisk Central Air Conditioner
- LP Leak Detector

Appliances & Accessories

- 10 Gal. Gas/Electric Water Heater w/Direct Spark Ignition
- 22" Microwave
- 3-Burner Range w/Glass Oven Door (electronic ignition)
- AM/FM Stereo w/Cassette
- Bi-fold Range Cover
- Cable TV Connection w/RG6 Coaxial
- Dometic 3862 Refrigerator (8 cu ft)
- Hardwood Raised Panel Refrigerator Front
- Range Hood w/Light & Fan
- Satellite Prep - Phone/TV Jack & Recept
- Telephone Connection w/1 Phone Jack
- TV Antenna w/Power Booster & 2 Jacks

Cabinets & Furniture

- Flexsteel Hide-A-Bed Sofa (featured in 34RDFB, 34WBRL)
- Corian Countertop In Kitchen w/Color Coordinated Edge & Acrylic Sink
- Dinette Table w/Hardwood Top & Four Chairs
- Drawers w/Metal Guides

- Laminate Countertop w/Color Coordinated Edge & Porcelain Lavatory In Bath
- Lifts On Bed Top To Access Storage Area
- Oak Hardwood Double Arched Raised Panel Cabinet Doors

Electrical Features

- 75 AMP Converter w/Charger
- 12 Volt Battery
- Exterior Security Lights (one installed on each side)
- Lights In Wardrobes

Exterior Features

- Gel-Coated Fiberglass End Caps
- Gel-Coated Fiberglass Exterior Sides
- Roof Rack & Ladder
- Rubber Roof w/9mm Decking
- Safety Chains
- Spare Tire

Interior Features

- Carpeting Stainmaster, 40 oz. 100% Nylon Plush Saxony w/Stainmaster Finish
- Vinyl Floor In Kitchen, Foyer & Bath Area
- Day/Night Pleated Window Shades & Lined Drapes
- Mini Blind Window Shades In Kitchen Area
- Padded Vinyl Ceiling

- Quilted Bedspread w/Reverse Sham & Accent Pillow
- Smoke Detector & 5 BC Fire Extinguisher

Plumbing/Bath Features

- Aqua Magic IV Stool
- Fiberglass Tub/Shower w/Enclosure
- Monitor Panel
- Sewage Holding Tank Rinse
- Water Heater Bypass System

Construction Features

- 12" I-Beam Frame w/Molded Wrap Storage Doors
- Aluminum Sidewalls & Roof Construction, 16" On Center
- Slideout Tray In Rear Bumper For Spare Tire

Windows, Awnings & Vents

- Power Vent In Bath Area w/Wall Switch
- A&E 8500 Side Awning
- Front Window Awning
- Lighted Acrylic Assist Handle At Entrance Door
- Skylight In Bathroom (located above tub/shower)

OPTIONAL FEATURES

Appliances & Accessories

- Dometic 1062 Refrigerator (10 cu ft)
- Sears Washer/Dryer w/50 AMP Electrical Service
- Icemaker Added To Dometic Refrigerator

Cabinets & Furniture

- Oak Hardwood Cabinets
- Frosted Maple Hardwood Cabinets
- Cherry Hardwood Cabinets
- Combination Desk/Dinette Table ilo Standard

Electrical Features

- 50 AMP Electrical Service
- Fluorescent Lights In Ceiling & Overhead Cabinets

Exterior Features

- Stabilizer Jacks (2 pair)

Interior Features

- Ceramic Floor Tile In Bath Area
- Lambrequin Window Treatment
- Simulated Plank Floor In Kitchen & Foyer Area
- Ceramic Floor Tile In Kitchen & Foyer Area
- Simulated Plank Floor In Bath
- Decorative Sculptured Inlay Area Rug

Windows, Awnings & Vents

- Double Pane Tinted Safety Glass Windows
- Fantastic Vent w/Rain Sensor In Kitchen

Towable Chassis Features

- Independent Mor/ryde Suspension

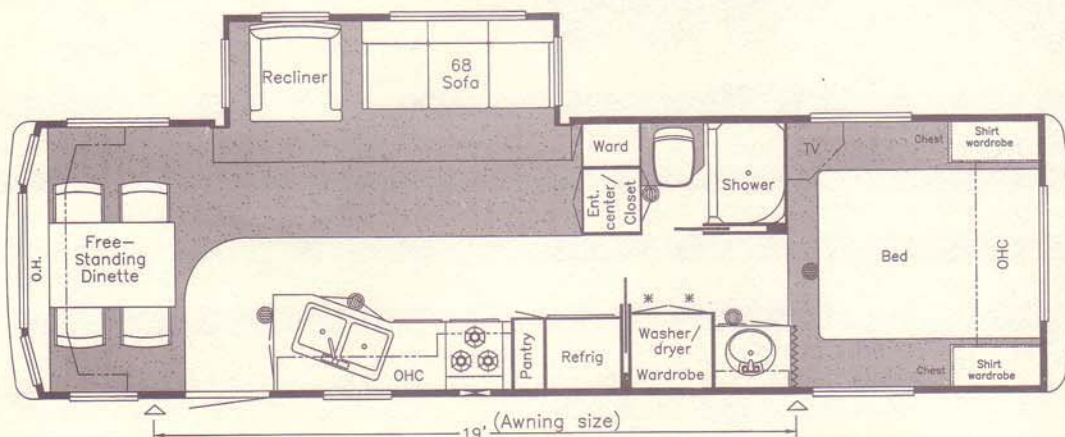
Mountain Aire® Travel Trailer Sizes & Capacities

Model	Axles	Axle Cap	Tire Size	GAWR	GVWR	Approx. Length	Approx. Height	Approx. Width	Approx. Dry Weight	Approx. Hitch Weight	Fresh Water	Grey Water	Sewage Cap	Approx Hitch Height	Heat Cap
MATT34RDFB	2	6000	235-85-R16E	6000	12500	34' 4"	11'	100"	9772 lbs	977 lbs	68 gal	84 gal	42 gal	24"	35000
MATT34WBRL	2	6000	235-85-R16E	6000	12500	34' 4"	11'	100"	9855 lbs	986 lbs	68 gal	84 gal	42 gal	24"	35000

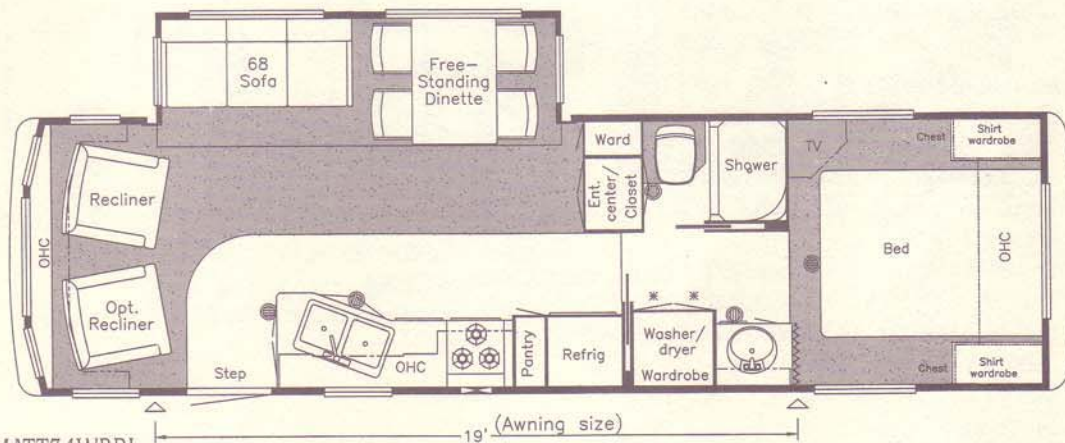
Lengths, Heights, Widths, Dry Weights and Hitch Weights are approximate. Weight will vary based on optional equipment added to the above base weight.

TRAVEL TRAILER SPECIFICATIONS

TRAVEL TRAILER FLOORPLANS



MATT34RDFB



MATT34WBRL

TRAVEL TRAILER OPTION



K122
Dinette-computer station combo ilo
dinette table - MATT 34WBRL

MOUNTAIN AIRE TRAVEL TRAILER INSULATION "R" VALUES

Roof	Sidewalls	Floor
R-24	R-12	R-27

Prices, specifications, and floorplans are subject to change at Newmar's discretion without prior written notice or obligation. Some floorplans may show optional chairs or end tables. See dealer for availability.

STANDARD FEATURES

Air Conditioning & Heating

- 2-30# LP Gas Bottles w/Automatic Regulator
- 13.5M Brisk Central Air Conditioner
- LP Leak Detector

Appliances & Accessories

- 10 Gal. Gas/Electric Water Heater w/Direct Spark Ignition
- 22" Microwave
- 3-Burner Range w/Glass Oven Door (electronic ignition)
- AM/FM Stereo w/Cassette & CD Player
- Bi-fold Range Cover Laminated w/Matching Countertop Material
- Cable TV Connection w/RG6 Coaxial
- Ceiling Fan In Living Room Area
- Dometic 3862 Refrigerator (8 cu ft)
- Hardwood Raised Panel Refrigerator Front
- Range Hood w/Light & Fan (not available on 36 RDDS)
- Satellite Prep - Phone/TV Jack & Recept
- TV Antenna w/Power Booster & 2 Jacks

Cabinets & Furniture

- Flexsteel Hide-A-Bed Sofa (featured in 35DSRL, 38KSWB)
- Flexsteel Magic Bed Sofa (where shown on floorplan drawing as a 74" or 84" sofa)
- Chair End Table
- Corian Countertop Color Coordinated Edge & Integrated Porcelain Lavatory In Bath
- Corian Countertop In Kitchen w/Color Coordinated Edge & Acrylic Sink
- Dinette Table w/Hardwood Top & Four Chairs
- Drawers w/Metal Guides

- Flexsteel Recliner
- Oak Hardwood Double Arched Raised Panel Cabinet Doors

Electrical Features

- 75 AMP Converter w/Charger
- 2-6 Volt Batteries
- Battery Disconnect Switch
- 50 AMP Electrical Service
- Exterior Security Lights (one installed on each side)
- Lights In Wardrobes

Exterior Features

- Gel-Coated Fiberglass End Caps
- Gel-Coated Fiberglass Exterior Sides
- Power Front Jacks
- Roof Rack & Ladder
- Rubber Roof w/9mm Decking
- Snaps For Fifth Wheel Jacks
- Spare Tire
- Stabilizer Jacks (1 pair)

Interior Features

- Carpeting Stainmaster, 40 oz. 100% Nylon Plush Saxony w/Stainmaster Finish
- Vinyl Floor In Kitchen, Foyer & Bath Area
- Day/Night Pleated Window Shades & Lined Drapes
- Mini Blind Window Shades In Kitchen Area
- Padded Vinyl Ceiling
- Quilted Bedspread w/Reverse Sham & Accent Pillow

Plumbing/Bath Features

- China Stool w/Spray Attachment
- Fiberglass Tub/Shower w/Enclosure
- Monitor Panel
- Sewage Holding Tank Rinse
- Water Heater Bypass System

Construction Features

- 12" I-Beam Frame w/Molded Wrap Storage Doors
- Aluminum Sidelwalls & Roof Construction, 16" On Center
- Slideout Tray In Rear Bumper For Spare Tire

Windows, Awnings & Vents

- Fantastic Vent w/Rain Sensor In Kitchen
- Power Vent In Bath Area w/Wall Switch
- A&E 8500 Side Awning
- Lighted Acrylic Assist Handle At Entrance Door
- Skylight In Bathroom (located above tub/shower)
- Tinted Safety Glass Windows

OPTIONAL FEATURES

Appliances & Accessories

- 30" Convection Microwave w/3-Burner Cooktop
- Dometic 1062 Refrigerator (10 cu ft)
- Sears Washer/Dryer
- Icemaker Added To Dometic Refrigerator

Cabinets & Furniture

- Oak Hardwood Cabinets
- Frosted Maple Hardwood Cabinets
- Cherry Hardwood Cabinets
- Combination Desk/Dinette Table ilo Standard

Electrical Features

- 5.5 Onan Generator w/Automatic Changeover & Battery

Interior Features

- Ceramic Floor Tile In Bath Area
- Lambrequin Window Treatment
- Simulated Plank Floor In Kitchen & Foyer Area
- Ceramic Floor Tile In Kitchen & Foyer Area
- Decorative Sculptured Inlay Area Rug

Windows, Awnings & Vents

- Double Pane Tinted Safety Glass Windows
- Power Slideout Landing w/Power Step
- Windows Placed On End Walls Of Bedroom Slideout

Towable Chassis Features

- Tandem Axle Dual Wheels
- Tandem Axle Dual Wheels w/Mor/ryde Suspension
- Independent Mor/ryde Suspension

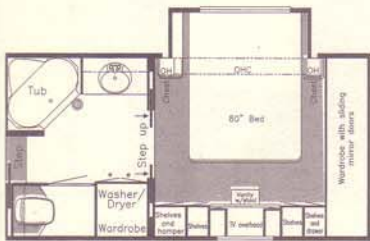
T H W H E E L S P E C I F I C A T I O N S

Mountain Aire® Fifth Wheel Sizes & Capacities

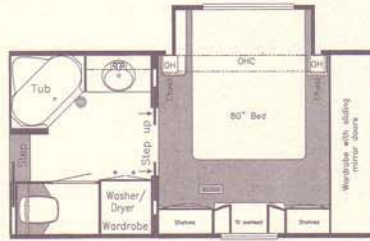
Model	Axles	Axle Cap	Tire Size	GAWR	GVWR	Approx. Length	Approx. Height	Approx. Width	Approx. Dry Weight	Approx. Hitch Weight	Fresh Water	Grey Water	Sewage Cap	Approx. Hitch Height	Heat Cap
MAFW34BKWB	2	7000	235-85-R16G	7000	16250	35' 11"	12' 3"	101"	12602	2394	75 gal	92 gal	50 gal	47"	42000
MAFW34RDCK	2	7000	235-85-R16G	7000	16250	35' 11"	12' 3"	101"	12659	2025	75 gal	92 gal	50 gal	47"	42000
MAFW35DSRL	2	7000	235-85-R16G	7000	16250	35' 10"	12' 3"	101"	13100	2400	75 gal	92 gal	40 gal	47"	42000
MAFW36RDDS	3	6000	235-85-R16E	6000	18500	37' 6"	12' 3"	101"	14398	2733	75 gal	92 gal	50 gal	47"	55000
MAFW36RDSK	2	7000	235-85-R16G	7000	16250	37' 6"	12' 3"	101"	13299	2793	75 gal	92 gal	50 gal	47"	55000
MAFW36RLAK	2	7000	235-85-R16G	7000	16250	37' 6"	12' 3"	101"	13312	1997	75 gal	92 gal	50 gal	47"	55000
MAFW38KSWB	3	6000	235-85-R16E	6000	18500	38' 1"	12' 3"	101"	14445	2456	75 gal	92 gal	50 gal	47"	55000
MAFW39RLSE	3	6000	235-85-R16E	6000	18500	39' 5"	12' 3"	101"	14275	2284	75 gal	92 gal	50 gal	47"	55000

Lengths, Heights, Widths, Dry Weights and Hitch Weights are approximate. Weight will vary based on optional equipment added to the above base weight.

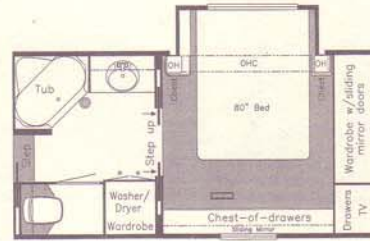
FIFTH WHEEL OPTION



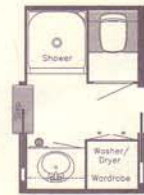
M397
Keep S.O. w/vanity, add sliding doors - MAFW 34BKWB, 36RDDS, 36RDSK, 36RLAK, 38KSWB, 39RLSE



M468
Vanity/dresser w/sliding doors ilo std. - MAFW 34BKWB, 36RDDS, 36RDSK, 36RLAK, 38KSWB, 39RLSE



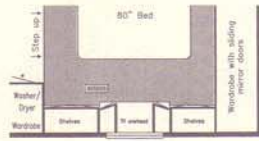
M437
Dresser center & sliding doors ilo std. - MAFW 34BKWB, 36RDDS, 36RDSK, 36RLAK, 38KSWB, 39RLSE



P180
Enclosed stool room w/straight shower - MAFW 34RDCK



M650
Dresser center ilo vanity center - MAFW 34RDCK



M466
Vanity/dresser center ilo std. MAFW 34BKWB, 36RDDS, 36RDSK, 36RLAK, 38KSWB, 39RLSE



M764
Vanity/dresser center ilo std. - MAFW 35DSRL



M430
Vanity/dresser center ilo std. - MAFW 35DSRL



M759
Dresser center ilo vanity center MAFW 35DSRL



M470
Vanity/dresser center ilo std. - MAFW 34RDCK



K010
Honeymoon suite ilo bedroom S.O. w/vanity - MAFW 34RDCK



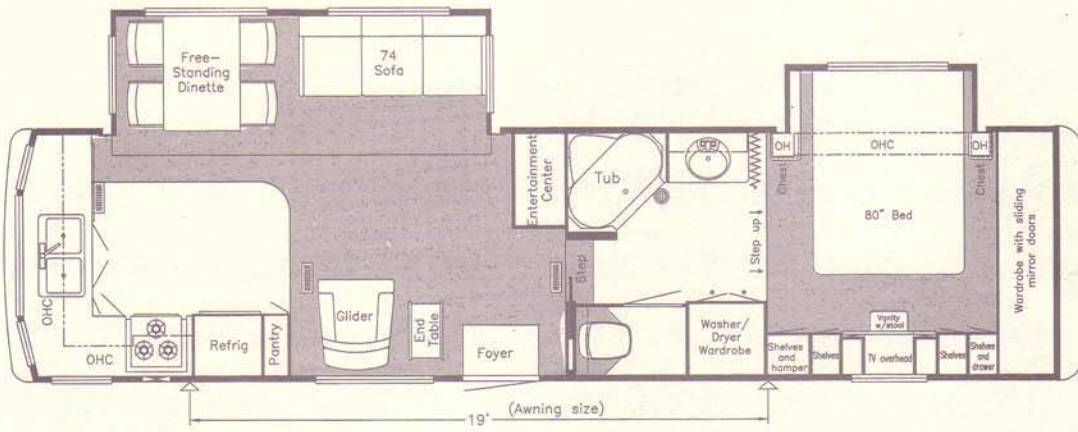
K340
Honeymoon suite ilo bedroom S.O. w/vanity - MAFW 34BKWB, 36RDDS, 36RDSK, 36RLAK, 38KSWB, 39RLSE



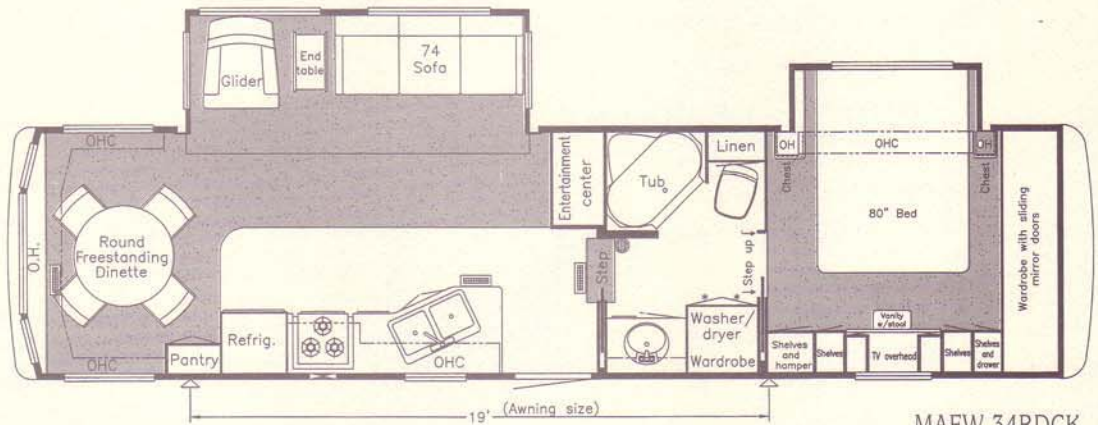
K994
Honeymoon suite w/sliding doors ilo bedroom S.O. w/vanity - MAFW 34BKWB, 36RDDS, 36RDSK, 36RLAK, 38KSWB, 39RLSE



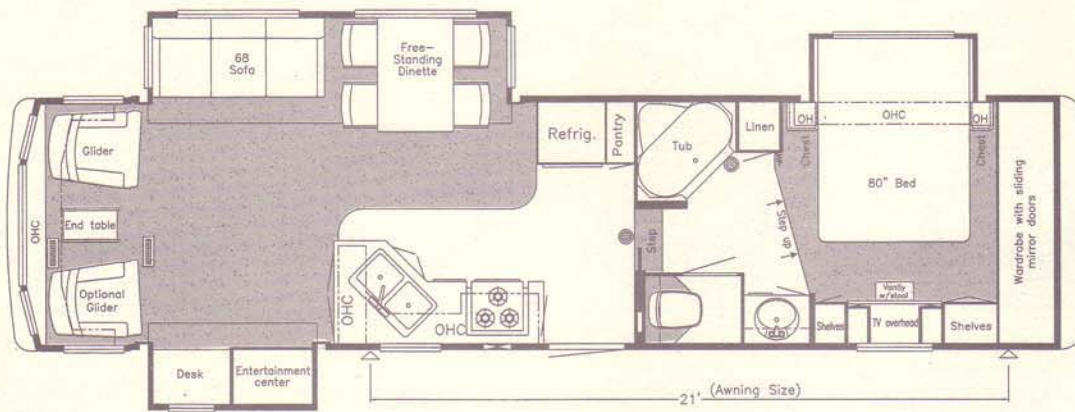
P160
Unenclosed stool room - MAFW 34BKWB, 36RDDS, 36RDSK, 36RLAK, 38KSWB, 39RLSE



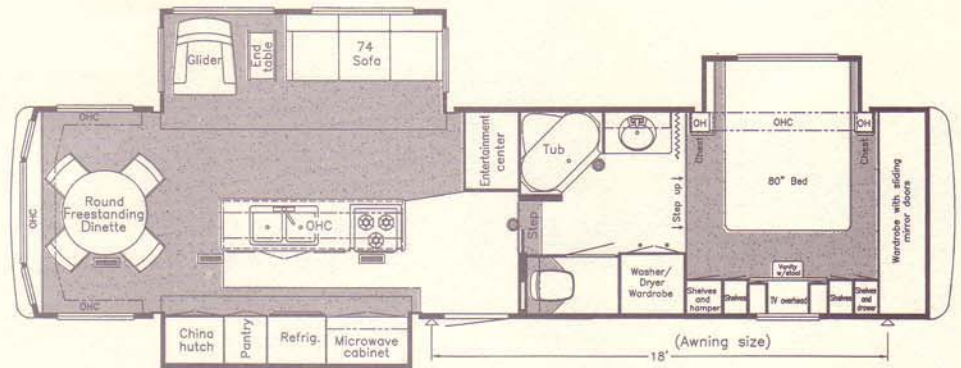
MAFW 34BKWB



MAFW 34RDCK



MAFW 35DSRL

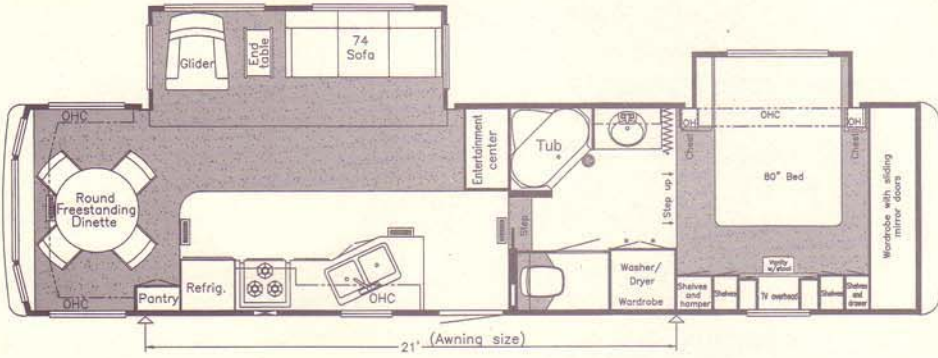


MAFW 36RDDS

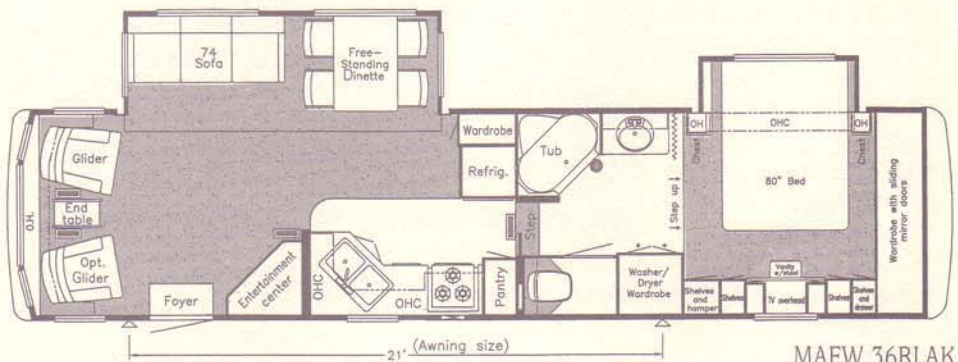
FIFTH WHEEL FLOOR PLANS

MOUNTAIN AIRE FIFTH WHEEL INSULATION "R" VALUES

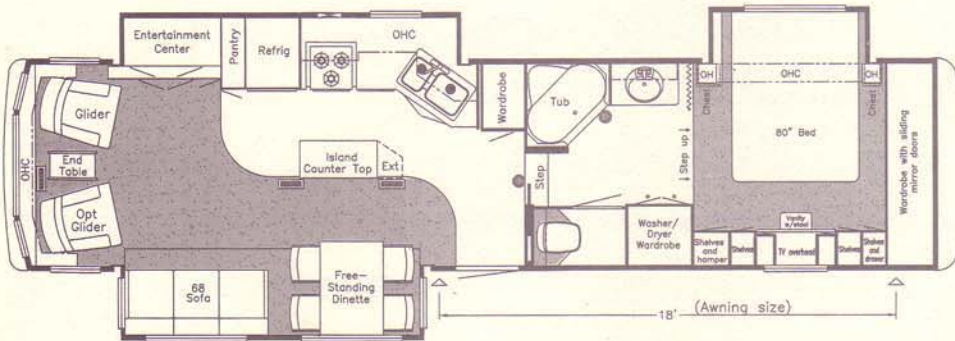
Roof	Sidewalls	Floor
R-24	R-12	R-27



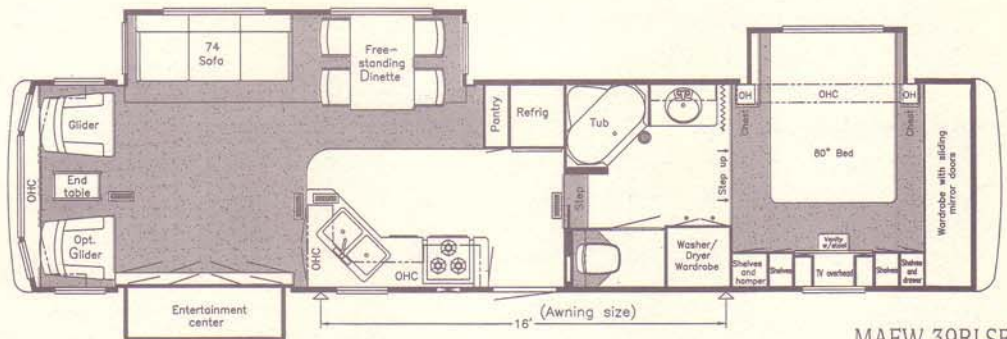
MAFW 36RDSK



MAFW 36RLAK



MAFW 38KSWB



MAFW 39RLSE

Prices, specifications, and floorplans are subject to change at Newmar's discretion without prior written notice or obligation. Some floorplans may show optional chairs or end tables. See dealer for availability.

STANDARD FEATURES

Motorized Chassis Features

- Standard Chassis - Ford F-53 Chassis w/V-10 Engine
- Cruise Control
- Spare Tire
- Tilt Steering Wheel

Air Conditioning & Heating

- 13.5M Penguin Central Air Conditioner
- Dash Heater/Air Conditioner High Output
- LP Leak Detector

Appliances & Accessories

- 10 Gal. Gas/Electric Water Heater w/Direct Spark Ignition
- 22" Microwave (not available on 3565, 3767)
- 30" Microwave (standard on 3565, 3767)
- 19" Color TV (in dash overhead)
- Color TV In Bedroom
- 3-Burner Recessed Range w/Glass Oven Door (piezo ignition)
- AM/FM Stereo w/CD Player (in dash)
- Bi-fold Range Cover Laminated w/Matching Countertop Material
- Cable TV Connection w/RG6 Coaxil
- Dometic 3862 Refrigerator (8 cu ft)
- Hardwood Raised Panel Refrigerator Front
- Range Hood w/Light & Fan (not available on 3565, 3767)
- Rear View Monitor System
- Satellite Prep - Phone/TV Jack & Recept
- Telephone Connection w/1 Phone Jack
- TV Antenna w/Power Booster & 2 Jacks

Cabinets & Furniture

- Flexsteel Hide-A-Bed Sofa (featured in 3356, 3357, 3762)
- Flexsteel Magic Bed Sofa (where shown on floor plan drawing as a 74" or 84" sofa)
- 6-Way Power Driver's Seat

- Corian Countertop Color Coordinated Edge & Integrated Porcelain Lavatory In Bath
- Corian Countertop In Kitchen w/Color Coordinated Edge & Acrylic Sink
- Drawers w/Metal Guides
- Flexsteel Recliner
- Hidden Leaf Dinette Table w/Two Fixed Chairs & Two Folding Chairs
- Oak Hardwood Cabinets w/Raised Panel Double Arched Doors

Electrical Features

- 75 AMP Converter w/Charger
- Battery Disconnect (for house battery)
- Onan Generator w/Remote Switch & Automatic Changeover (5.5 Ford-7.0 Freightliner Chassis)
- 5 Watt Solar Panel To Charge Chassis Battery
- 50 AMP Electrical Service w/Flexible Cord
- Daytime Headlight System
- Driving Lights
- Emergency Engine Start Switch
- Exterior Security Lights (one installed on each side)
- Interior Courtesy Lights
- Lights In Exterior Storage Compartments
- Lights In Wardrobes

Exterior Features

- Convex Exterior Mirrors w/Remote Control & Defrost
- Gel-Coated Fiberglass Exterior Sides
- Hitch For Towing Car (w/2 extra 14 gauge wires for customer use) (class-2, 5000# rating)
- Hydraulic Leveling Jacks w/"Touch" Manual Control
- Roof Rack & Ladder
- Rubber Roof w/9MM Decking

Interior Features

- Carpeting Stainmaster, 40 oz. 100% Nylon Plush Saxony w/Stainmaster Finish
- Simulated Plank Floor In Kitchen & Bath Area
- Day/Night Pleated Window Shades & Lambrequins
- Mini Blind Window Shades In Kitchen Area
- Padded Vinyl Ceiling
- Pull-out Convenience Tray On Passenger's Side Of Dash
- Quilted Bedspread w/Reverse Sham & Accent Pillow

Plumbing/Bath Features

- China Stool w/Spray Attachment
- Exterior Shower (located on off door side)
- Fiberglass Tub/Shower w/Enclosure
- Monitor Panel
- Sewage Holding Tank Rinse
- Water Heater Bypass System

Construction Features

- Aluminum Sidewalls & Roof Construction, 16" On Center
- Slideout Tray In Rear Bumper For Spare Tire

Windows, Awnings & Vents

- Automatic Double Entrance Door Step
- Fantastic Vent w/Rain Sensor In Kitchen
- Power Vent In Bath Area w/Wall Switch
- A&E 9000 Side Awning
- Lighted Acrylic Assist Handle At Entrance Door
- Skylight In Bathroom w/Soft Shade (located above tub/shower)
- Stainless Steel Wheel Simulators

OPTIONAL FEATURES

Motorized Chassis Features

- Optional Chassis - Freightliner Diesel (210 HP)

Air Conditioning & Heating

- Extra 13.5M Penguin Air Conditioner
- 2 - 15M Brisk Heat Pump Air Conditioners ilo Standard

Appliances & Accessories

- 30" Convection Microwave w/3-Burner Cooktop
- Compact Washer/Dryer (not available on 3356, 3357)
- Dometic 1062 Refrigerator (10 cu ft)
- Ceiling Fan In Bedroom (not available on floorplans with a slideout)
- CD Player - 10 Disc Changer w/Amplifier & Subwoofer
- Icemaker Added To Dometic Refrigerator (where available)

Cabinets & Furniture

- Frosted Maple Hardwood Cabinets
- Cherry Hardwood Cabinets
- Flexsteel Front Seats - Leather/Vinyl w/6-Way Power Lumbar Support
- Flexsteel Leather/Vinyl Sofa ilo Standard (where available)
- Built-in Booth Dinette ilo Standard
- Combination Desk/Dinette Table ilo Standard (where available)

Electrical Features

- Roof Mounted Spot Light
- 400 Watt Inverter (for dash TV)

Interior Features

- Ceramic Floor Tile In Bath Area

A S S A S P E C I F I C A T I O N S

Mountain Aire® Class A Freightliner Chassis

Model	Engine H.P.	Axle Ratio	Fuel Cap	Wheel Base	Front GAWR	Rear GAWR	GVWR	GCWR	Appr. UVW	Appr. NCC
MACA3356	210	3.31	90	200	7000	13500	20500	25500	18200	2300
MACA3357	210	3.31	90	200	7000	13500	20500	25500	18550	1950
MACA3559	210	3.31	90	216	7000	13500	20500	25500	18290	2210
MACA3565	210	3.31	90	220	7000	13500	20500	25500	18660	1840

Lengths, Heights, Widths and Dry Weights are approximate. Weight will vary based on optional equipment added to the above base weight.

Mountain Aire® Class A Ford Chassis

Model	Engine H.P.	Axle Ratio	Fuel Cap	Wheel Base	Front GAWR	Rear GAWR	GVWR	GCWR	Appr. UVW	Appr. NCC
MACA3356	275	5.38	75	200	7000	13500	20500	26000	17650	2850
MACA3357	275	5.38	75	208	7000	13500	20500	26000	18000	2500
MACA3559	275	5.38	75	216	7000	13500	20500	26000	17740	2760
MACA3565	275	5.38	75	220	7000	13500	20500	26000	18110	2390
MACA3758	275	5.38	75	240	7000	13500	20500	26000	18280	2220
MACA3762	275	5.38	75	240	7000	13500	20500	26000	18200	2300
MACA3767	275	5.38	75	240	7000	13500	20500	26000	18370	2130
MACA3780	275	5.38	75	240	7000	13500	20500	26000	18220	2280
MACA3796	275	5.38	75	240	7000	13500	20500	26000	18400	2100
MACA3797	275	5.38	75	240	7000	13500	20500	26000	18360	2140

Lengths, Heights, Widths and Dry Weights are approximate. Weight will vary based on optional equipment added to the above base weight.

Mountain Aire® Class A Sizes & Capacities

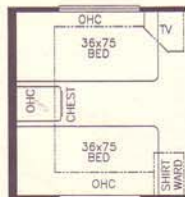
Model	Approx. Overall Length	Approx. Overall Width	Approx. Interior Overall Width	Interior Height	Grey Tank (Gal)	Sewage Tank (Gal)	Water Tank (Gal)	L/P Tank (Gal)	Furnace (btu)	Water Heater
MACA3356	33' 6"	101"	11' 8"	95.5"	78"	50 gal	50 gal	56 gal	32	35000 btu 10 gal
MACA3357	33' 6"	101"	11' 8"	95.5"	78"	50 gal	50 gal	56 gal	32	35000 btu 10 gal
MACA3559	35' 6"	101"	11' 8"	95.5"	78"	50 gal	50 gal	56 gal	32	35000 btu 10 gal
MACA3565	35' 6"	101"	11' 8"	95.5"	78"	50 gal	50 gal	56 gal	32	35000 btu 10 gal
MACA3758	37' 6"	101"	11' 8"	95.5"	78"	50 gal	50 gal	56 gal	32	40000 btu 10 gal
MACA3762	37' 6"	101"	11' 8"	95.5"	78"	50 gal	50 gal	56 gal	32	40000 btu 10 gal
MACA3767	37' 6"	101"	11' 8"	95.5"	78"	50 gal	50 gal	56 gal	32	40000 btu 10 gal
MACA3780	37' 6"	101"	11' 8"	95.5"	78"	50 gal	50 gal	56 gal	32	40000 btu 10 gal
MACA3796	37' 6"	101"	11' 8"	95.5"	78"	50 gal	50 gal	56 gal	32	40000 btu 10 gal
MACA3797	37' 6"	101"	11' 8"	95.5"	78"	50 gal	50 gal	56 gal	32	40000 btu 10 gal

Lengths, Heights, Widths, Dry Weights and Hitch Weights are approximate. Weight will vary based on optional equipment added to the above base weight.

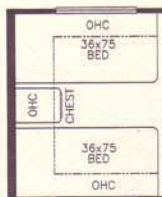
CLASS A OPTIONAL FLOORPLANS



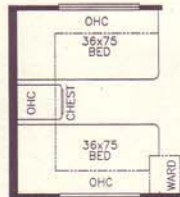
K950
Honeymoon suite
bedroom - MA
3758, 3762, 3780



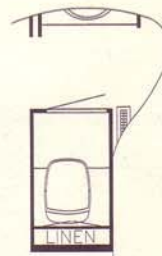
K094
75" Twin beds -
MA 3356, 3559,
3797



K096
75" Twin beds
MA 3758,
3767, 3780



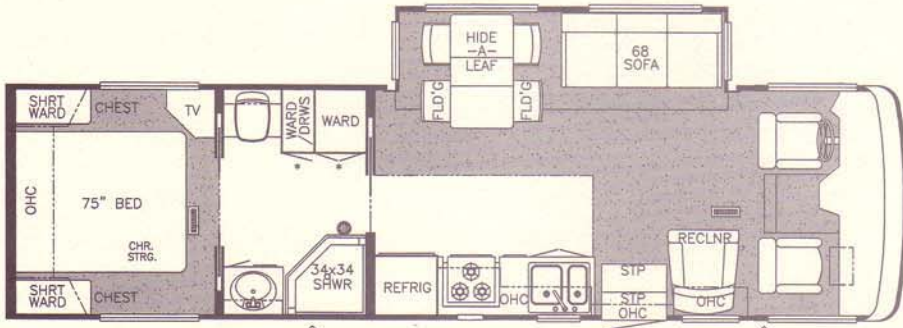
K097
75" Twin beds -
MA 3796



P191
Enclosed stool
room - MA 3780

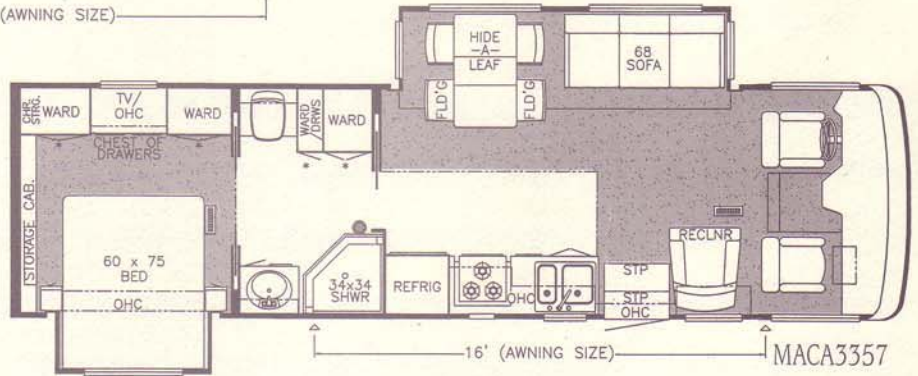


P201
Enclosed stool room
w/straight shower -
MA 3758



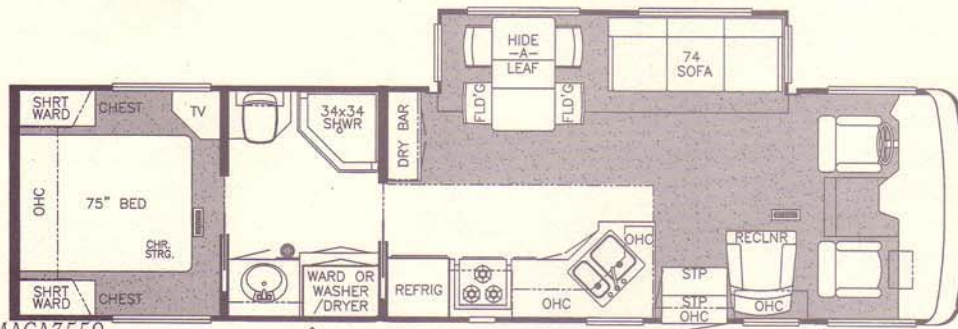
MACA3356

16' (AWNING SIZE)



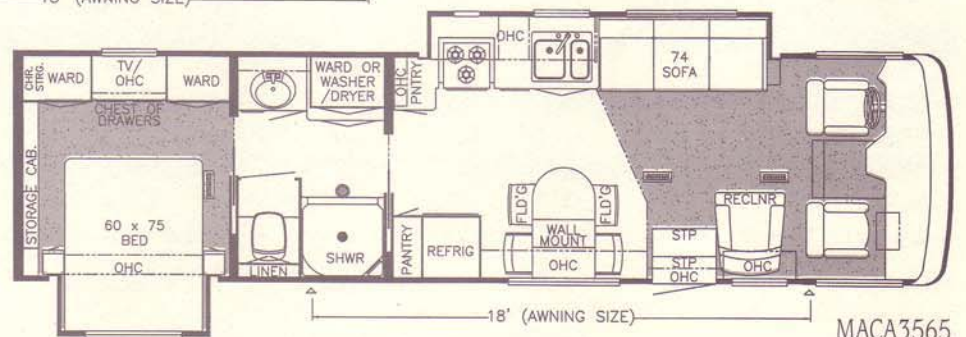
MACA3357

16' (AWNING SIZE)



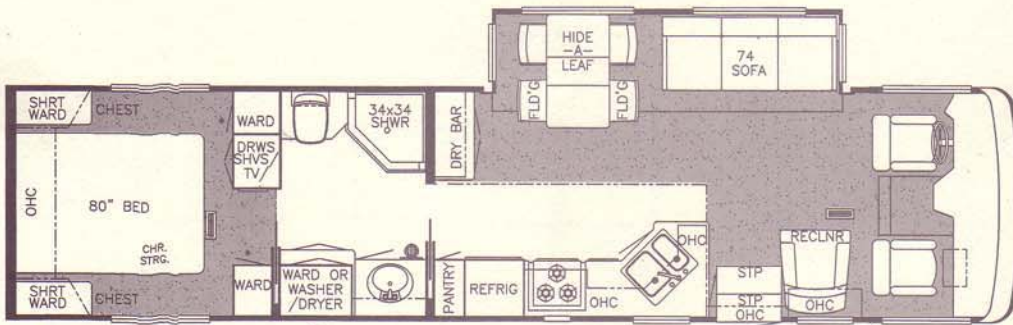
MACA3559

18' (AWNING SIZE)



MACA3565

18' (AWNING SIZE)



MACA3758

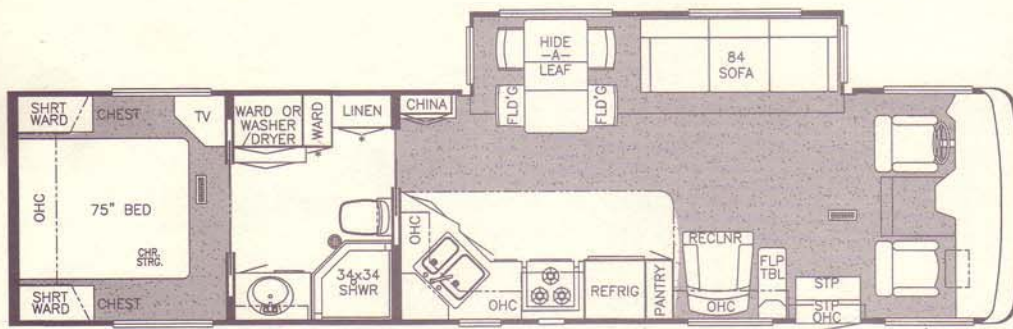
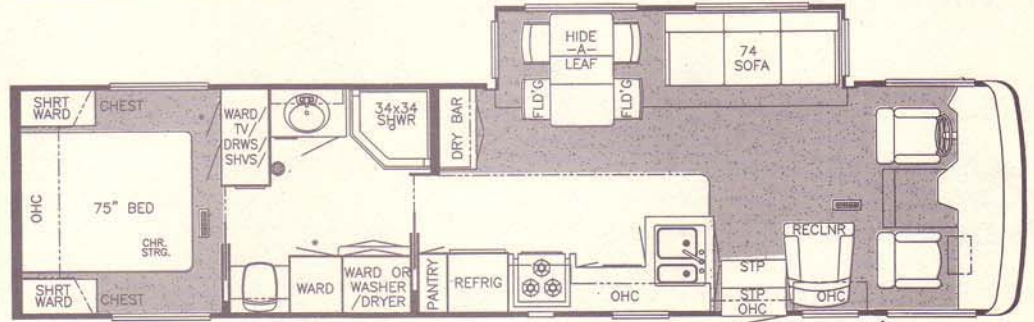
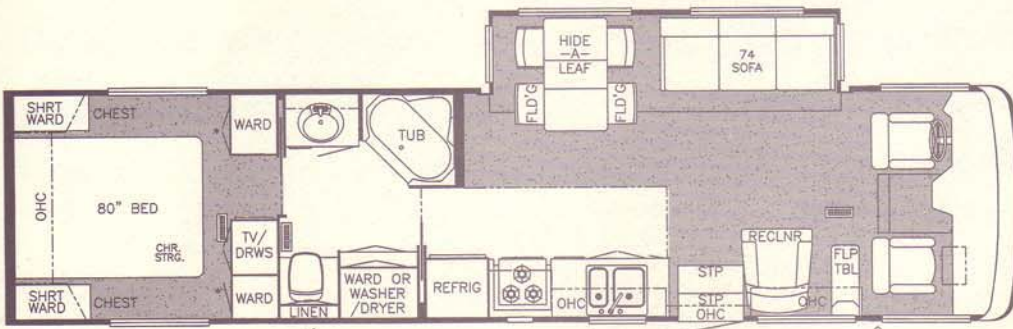
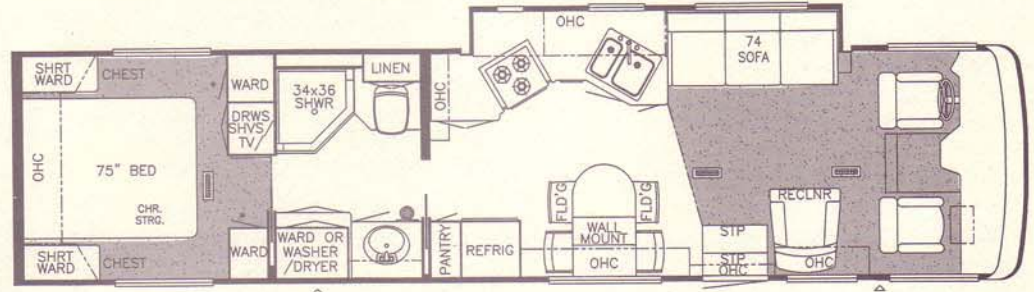
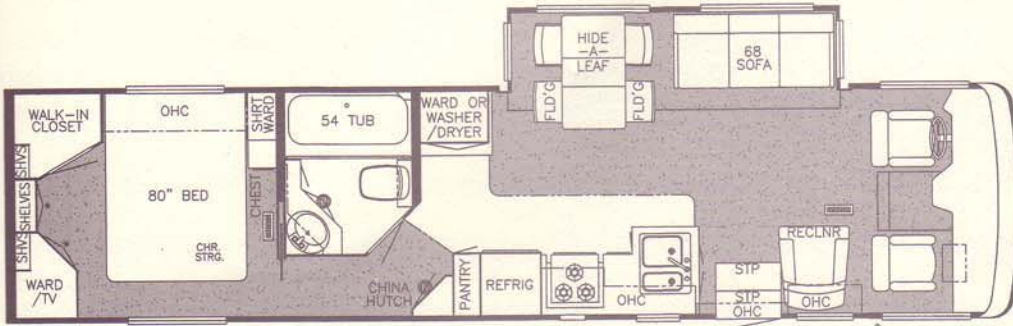
20' (AWNING SIZE)

Prices, specifications, and floorplans are subject to change at Newmar's discretion without prior written notice or obligation. Some floorplans may show optional chairs or end tables. See dealer for availability.

CLASS A FLOOR PLANS

MOUNTAIN AIRE CLASS A INSULATION "R" VALUES

Roof	Sidewalls	Floor
R-17	R-12	R-12



STANDARD FEATURES

Motorized Chassis Features

- Spartan Mountain Master Chassis (350 HP)
Raised Rail w/Independent Front Suspension
- Cruise Control
- Polished Aluminum Wheels
- Tilt & Telescope Steering Wheel

Air Conditioning & Heating

- 2 - 13.5M Penguin Central Air Conditioners
- LP Leak Detector

Appliances & Accessories

- 10 Gal. Gas/Electric Water Heater w/Direct Spark Ignition
- 30" Convection Microwave
- 19" Color TV (in dash overhead)
- Color TV In Bedroom
- 3-Burner Recessed Cooktop (electronic ignition)
- Air Horns
- AM/FM Stereo In Dash w/Combination Rear View Color Monitor System
- Bi-fold Range Cover Laminated w/Matching Countertop Material
- Cable TV Connection w/RG6 Coaxil
- CD Player - Remote 8 Disc Changer (in dash)
- Dometic 1062 Refrigerator w/Icemaker (10 cu ft)
- Hardwood Raised Panel Refrigerator Front
- Telephone Connection w/1 Phone Jack
- TV Antenna w/Power Booster & 2 Jacks
- VCR 4-Head
- Washer/Dryer Prep (for compact washer/dryer)

Cabinets & Furniture

- Flexsteel Magic Bed Sofa
- Corian Countertop Color Coordinated Edge & Integrated Porcelain Lavatory In Bath
- Corian Countertop In Kitchen w/Color Coordinated Edge & Acrylic Sink

- Drawers w/Metal Guides
- Flexsteel Front Seats - Leather/Vinyl (w/8-way power, power lumbar & power footrest on passenger seat)
- Flexsteel Recliner
- Hidden Leaf Dinette Table w/Two Fixed Chairs & Two Folding Chairs
- Oak Hardwood Cabinets w/Raised Panel Double Arched Doors

Electrical Features

- 75 AMP Converter w/Charger
- 4 - 6 Volt Batteries On Pull-out Tray
- Battery Disconnect (for house battery)
- 7.0 Power Tech Diesel Quiet Series Generator On Slides w/Automatic Changeover
- 5 Watt Solar Panel To Charge Chassis Battery
- 50 AMP Electrical Service w/Flexible Cord
- Daytime Headlight System
- Driving Lights
- Emergency Engine Start Switch
- Exterior Security Lights (one installed on each side)
- Interior Courtesy Lights
- Lights In Exterior Storage Compartments
- Lights In Wardrobes
- Recessed Docking Lights

Exterior Features

- Convex Exterior Chrome Mirrors w/Remote Control & Defrost
- Gel-Coated Fiberglass Exterior Sides
- Hitch For Towing Car (w/2 extra 14 gauge wires for customer use) (class-2, 5000# rating)
- Hydraulic Leveling Jacks w/Automatic Control
- Painted Exterior Graphics w/Clear Coat Finish
- Rubber Roof w/9MM Decking

Interior Features

- Carpeting Stainmaster, 40 oz. 100% Nylon Plush Saxony w/Stainmaster Finish
- Decorative Sculptured Inlay Area Rug
- Decorative Sculptured Inlay Design In Living Area Carpet
- Simulated Plank Floor In Kitchen & Bath Area
- Luxurious Pillow Top Mattress
- Mini Blind Window Shades In Kitchen Area
- Padded Vinyl Ceiling
- Quilted Bedspread w/Reverse Sham & Accent Pillow

Plumbing/Bath Features

- Automatic Rewind Water Hose Reel
- Exterior Convenience Wash Station (hot/cold water, soap & towel dispenser)
- Fiberglass Tub/Shower w/Enclosure
- Monitor Panel
- Sewage Holding Tank Rinse
- Water Filter w/Drink Dispenser At Kitchen Sink
- Water Heater Bypass System

Construction Features

- Aluminum Sidewalls & Roof Construction, 16" On Center

Windows, Awnings & Vents

- Automatic Double Entrance Door Step
- Fantastic Vent w/Rain Sensor In Bath
- Fantastic Vent w/Rain Sensor In Kitchen
- Power Vent In Bath Area w/Wall Switch
- A&E 9000 Side Awning
- Skylight In Bathroom w/Soft Shade (located above tub/shower)

OPTIONAL FEATURES

Motorized Chassis Features

- Optional Chassis - Freightliner X-Line (330 HP)

Air Conditioning & Heating

- 2 - 15M Brisk Heat Pump Air Conditioners ilo Standard
- 2 - 13.5M Penguin Heat Pump Air Conditioners ilo Standard

Appliances & Accessories

- Compact Washer/Dryer
- Navigation System - Carin/Philips (w/7 disc set)
- U Line Icemaker & Dometic 1062 Refrigerator (available on 4062, 4080, 4092, 4093)
- Ceiling Fan In Bedroom (not available on floorplans w/a slideout)
- Surround Sound System ilo Standard

Cabinets & Furniture

- Frosted Maple Hardwood Cabinets
- Cherry Hardwood Cabinets
- Undermount Corian Sink In Kitchen & Bath

Cabinets & Furniture (Cont.)

- Flexsteel Leather/Vinyl Sofa In ilo standard
- Built-in Booth Dinette ilo Standard
- Combination Desk/Dinette Table ilo Standard

Electrical Features

- Heart Freedom 20 Inverter/Converter
- Roof Mounted Spot Light
- 400 Watt Inverter (for dash TV)

Exterior Features

- Rear Protective Tow Guard
- Front End Protective Shield

Interior Features

- Ceramic Floor Tile In Kitchen Area
- Hardwood Lambrequin Window Treatment In Living Area
- Ceramic Floor Tile In Bath Area

Windows, Awnings & Vents

- Driver's Side Door w/Power Window
- Double Pane Windows (not available on driver/passenger area)

Mountain Aire® Diesel Pusher Freightliner Chassis

Model	Engine H.P.	Axle Ratio	Fuel Cap	Wheel Base	Front GAWR	Rear GAWR	GVWR	GCWR	Appr. UVW	Appr. NCC
MADP3763	330	4.63	100	240	10400	17000	27400	36000	22840	4560
MADP4060	330	4.63	150	276	12000	19000	31000	36000	25115	5885
MADP4063	330	4.63	150	276	12000	19000	31000	36000	24690	6310
MADP4064	330	4.63	150	276	12000	19000	31000	36000	25115	5885
MADP4080	330	4.63	150	276	12000	19000	31000	36000	25310	5870
MADP4081	330	4.63	150	276	12000	19000	31000	36000	25055	5945
MADP4091	330	4.63	150	276	12000	19000	31000	36000	24990	6010
MADP4092	330	4.63	150	276	12000	19000	31000	36000	25040	5960
MADP4093	330	4.63	150	276	12000	19000	31000	36000	25480	5520

Lengths, Heights, Widths and Dry Weights are approximate. Weight will vary based on optional equipment added to the above base weight.

Mountain Aire® Diesel Pusher Spartan Chassis

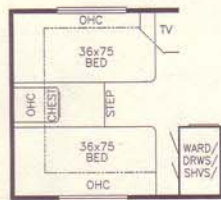
Model	Engine H.P.	Axle Ratio	Fuel Cap	Wheel Base	Front GAWR	Rear GAWR	GVWR	GCWR	Appr. UVW	Appr. NCC
MADP3763	350	4.78	100	240	10400	17000	27400	37400	23440	3960
MADP4060	350	4.78	150	276	12000	19000	31000	41000	25715	5285
MADP4063	350	4.78	150	276	12000	19000	31000	41000	25290	5710
MADP4064	350	4.78	150	276	12000	19000	31000	41000	25715	5285
MADP4080	350	4.78	150	276	12000	19000	31000	41000	25730	5270
MADP4081	350	4.78	150	276	12000	19000	31000	41000	25655	5345
MADP4091	350	4.78	150	276	12000	19000	31000	41000	25590	5410
MADP4092	350	4.78	150	276	12000	19000	31000	41000	25640	5360
MADP4093	350	4.78	150	276	12000	19000	31000	41000	26080	4920

Lengths, Heights, Widths and Dry Weights are approximate. Weight will vary based on optional equipment added to the above base weight.

DIESEL PUSHER OPTION



K103
75" Twin beds -
MP 4060, 4080



K105
75" Twin beds -
MP 3763



K108
80" Twin beds - MP
4064, 4081



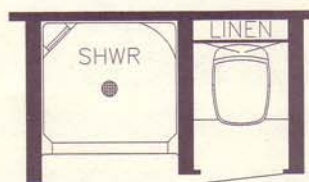
K951
Honeymoon suite bed-
room all MP's (except
3763, bedroom S.O.'s)



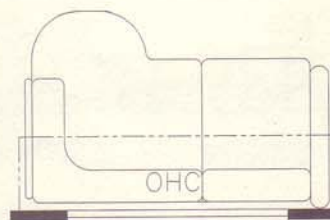
K121
Desk ilo dry bar -
MP 4081, 4093



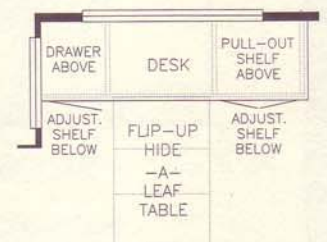
P190
Enclosed stool room -
MP 4080, 4081, 4093



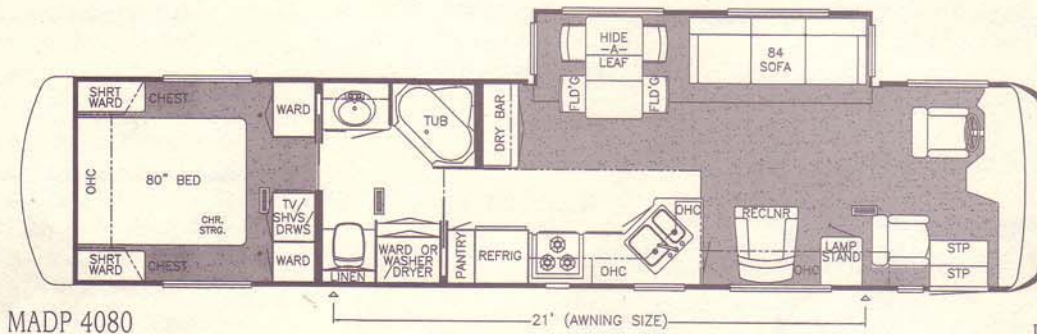
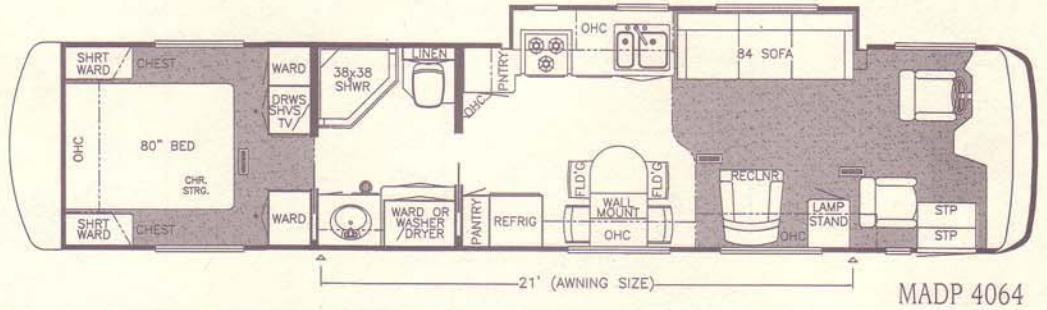
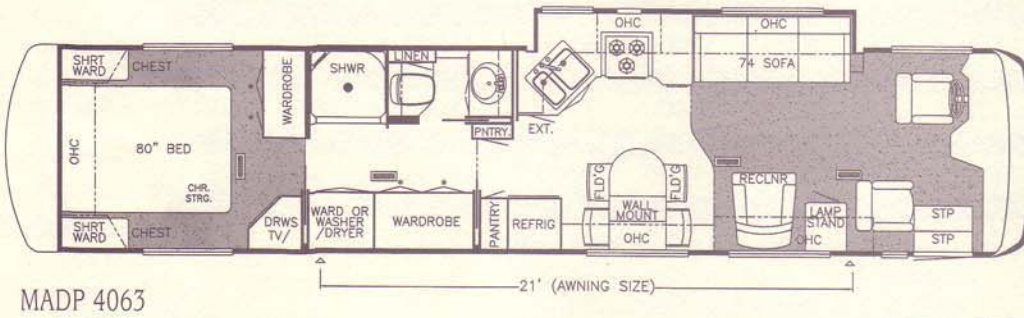
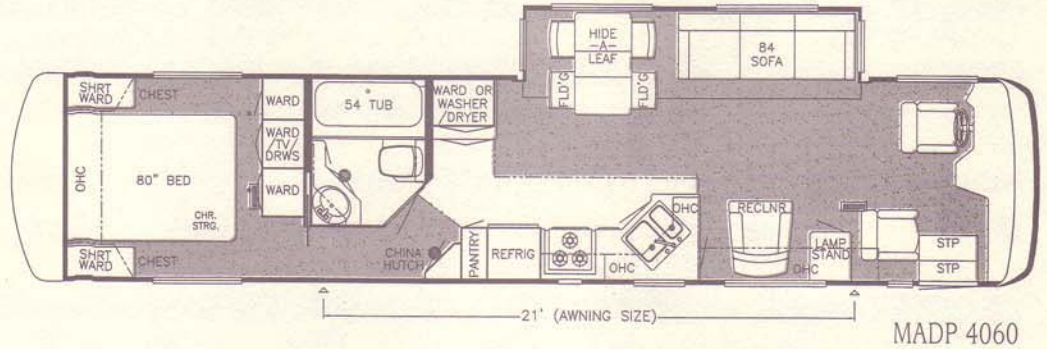
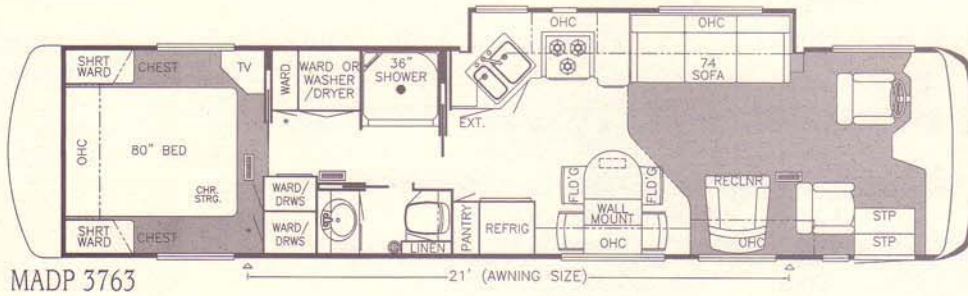
P200
Enclosed stool room
w/straight shower -
MP 4064, 4092



K911
L-sofa 66" leather w/incliner - All
MP's except 3763, 4063, 4091
(not available w/center entry option)



K122
Dinette computer station
combo ilo dinette table - All
MP's (except kitchen S.O.'s)

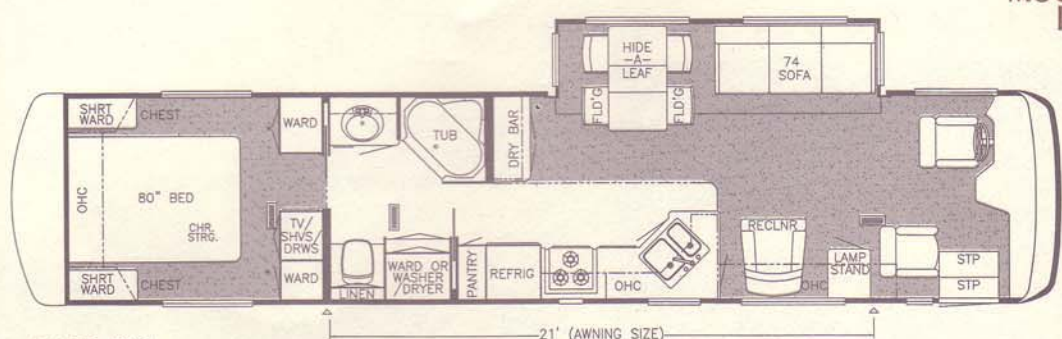


Prices, specifications, and floorplans are subject to change at Newmar's discretion without prior written notice or obligation. Some floorplans may show optional chairs or end tables. See dealer for availability.

ESEL PUSHER FLOOR PLANS

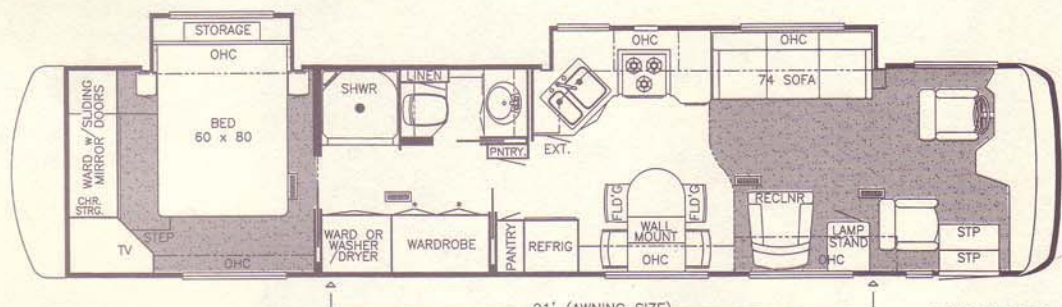
MOUNTAIN AIRE DIESEL PUSHER INSULATION "R" VALUES

Roof	Sidewalls	Floor
R-17	R-12	R-12



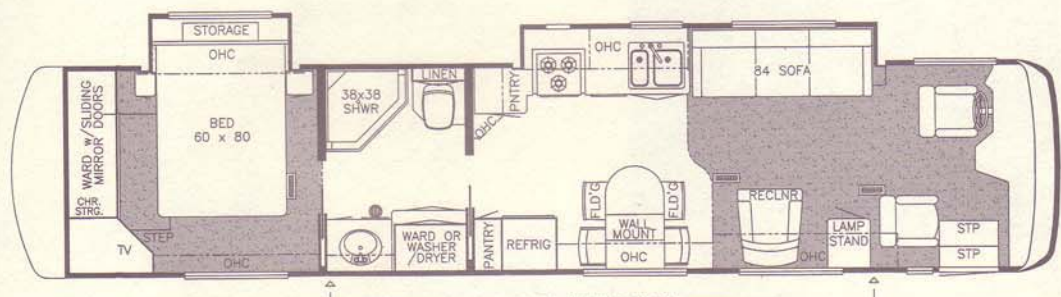
MADP 4081

21' (AWNING SIZE)



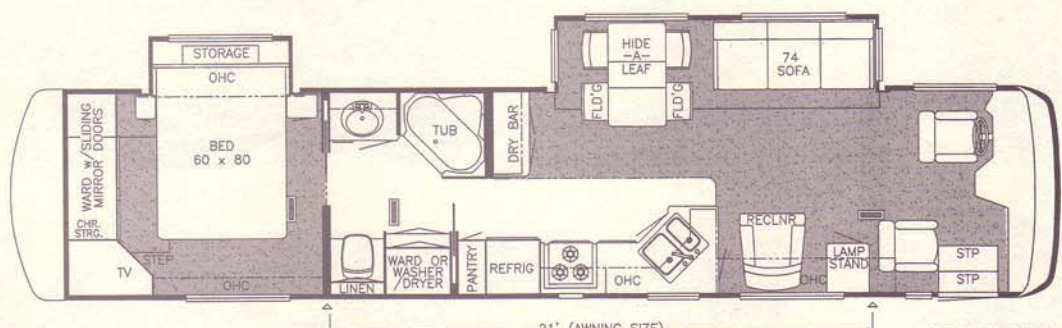
MADP 4091

21' (AWNING SIZE)



MADP 4092

21' (AWNING SIZE)



MADP 4093

21' (AWNING SIZE)

Mountain Aire® Diesel Pusher Sizes & Capacities

Model	Approx. Overall Length	Approx. Overall Width	Approx. Interior Width	Interior Height	Grey Tank (Gal)	Sewage Tank (Gal)	Water Tank (Gal)	L/P Tank (Gal)	Furnace (btu)	Water Heater (gal)
MADP3763	37' 8"	100"	11' 8"	95.5"	78"	65 gal	45 gal	105 gal	32	40000 btu 10 gal
MADP4060	40' 8"	100"	11' 8"	95.5"	78"	65 gal	45 gal	105 gal	32	40000 btu 10 gal
MADP4063	40' 8"	100"	11' 8"	95.5"	78"	65 gal	45 gal	105 gal	32	40000 btu 10 gal
MADP4064	40' 8"	100"	11' 8"	95.5"	78"	65 gal	45 gal	105 gal	32	40000 btu 10 gal
MADP4080	40' 8"	100"	11' 8"	95.5"	78"	65 gal	45 gal	105 gal	32	40000 btu 10 gal
MADP4081	40' 8"	100"	11' 8"	95.5"	78"	65 gal	45 gal	105 gal	32	40000 btu 10 gal
MADP4091	40' 8"	100"	11' 8"	95.5"	78"	65 gal	45 gal	105 gal	32	40000 btu 10 gal
MADP4092	40' 8"	100"	11' 8"	95.5"	78"	65 gal	45 gal	105 gal	32	40000 btu 10 gal
MADP4093	40' 8"	100"	11' 8"	95.5"	78"	65 gal	45 gal	105 gal	32	40000 btu 10 gal

Lengths, Heights, Widths, Dry Weights and Hitch Weights are approximate. Weight will vary based on optional equipment added to the above base weight.

2000 MOUNTAIN AIRE BY NEWMAR

Mountain Aire

For more than three decades, Newmar® has been building America's most popular recreational vehicles. Right from the start - customers like you recognized that a Newmar recreational vehicle was something special. In a world of cookie-cutter RVs, a Newmar product has always stood out for its innovative features, outstanding performance and unparalleled quality. And, while we're proud of our tradition of excellence, we won't rest on our laurels. We're constantly refining our recreational vehicles to make them even better. We believe the models featured in this catalog are the finest we've ever built. And, we back them with a bumper-to-bumper, three year warranty.

Thanks for taking the time to look over our products. We sincerely hope you will become one of our many satisfied customers who have learned that Newmar truly is An American Tradition of Excellence.


Mahlon Miller
Chairman of the Board

We invite you to visit our state of the art production facility in Nappanee, Indiana.

Plant tours are offered at
10:00 a.m. and 1:00 p.m.,
Monday through Friday.

Newmar Kountry Klub

Don't forget to check out the Klub—the Newmar Kountry Klub, that is. All you need for eligibility is to be a proud owner of any of the fine Newmar recreational vehicles.



TRAVEL TRAILER • FIFTH WHEEL



CLASS A • DIESEL PUSHER

Compliments of:



An American Tradition Of Excellence

355 N DELAWARE ST • PO BOX 30
NAPPANEE IN 46550-0030
PHONE 219 773-7791 • FAX 219 773-2895
<http://www.newmarcorp.com>