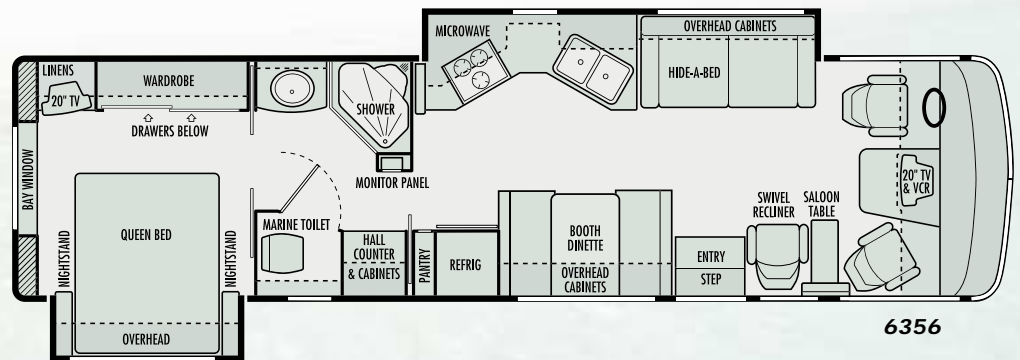
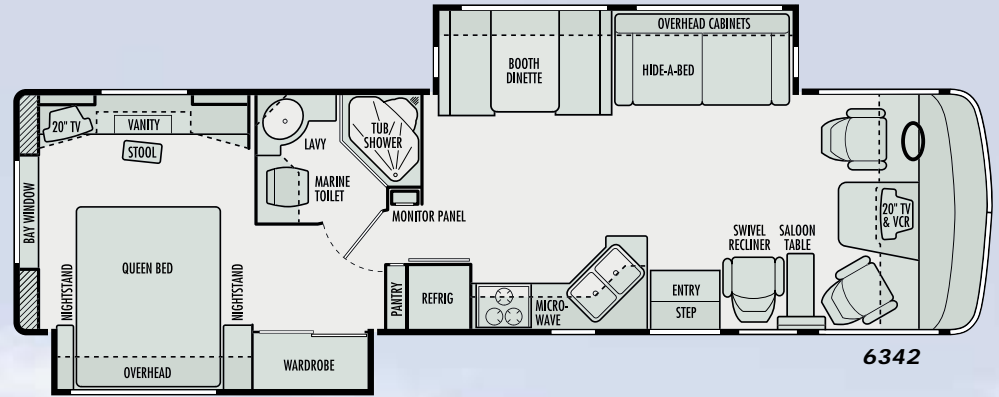


# Dolphin



Due to continued product improvement, National R. V., Inc. reserves the right to change materials, colors, specifications and prices at any time without notification. Copyright © 2001 by National R. V., Inc. 08/01

# DOLPHIN LX FEATURES & SPECIFICATIONS

## BODY CONSTRUCTION

Duraframe® patented steel sub floor construction  
 Steel framed laminated floor  
 Steel framed crowned laminated fiberglass roof  
 Steel framed laminated fiberglass high gloss walls  
 Front and rear molded fiberglass caps  
 Full panoramic tinted windshield  
 Soft fabric ceiling material  
 Electric slide-out room with overhead cabinets (flush floor on lounge slide models only)  
 Front and rear molded fiberglass bumpers  
 Insulated fiberglass exterior storage compartment doors with integrated paddle latches and gas struts  
 Steel framed exterior storage compartment with insulated bottoms  
 Lighted storage compartments and service area  
 Exterior assist handle  
 Aluminum rear ladder  
 Awning rail (rain gutter with drip spouts)  
 Automotive undercoating as required  
 Custom vinyl exterior graphics

## COCKPIT FEATURES

JVC® AM/FM stereo and CD with six speakers  
 Driver and passenger map light  
 Custom dash with full gauge package  
 Convenience tray  
 Audible turn signals  
 Chrome electric horns  
 Pantographic windshield wipers  
 Power steering  
 Cruise control  
 Tilt steering wheel  
 Rear vision system with built-in microphone  
 Overhead dash fans (2 speed)  
 Power heated rear view mirrors with double convex  
 Driver and extra wide passenger recliner seats  
 12V/120V receptacle and telephone jack  
 Passenger work station  
 Aviation style sun visors  
 Hydraulic leveling jacks with dash mounted controls  
 Generator hour meter and dash control switch  
 Auxiliary start switch on dash  
 Wraparound privacy curtain with easy reach wand

## APPLIANCES & ACCESSORIES

Theater sound module  
 8 cu. ft. double door refer  
 Hair dryer with nightlite (mounted in bath)  
 Dust buster vacuum cleaner  
 Systems monitor panel

Three burner cook top with flush mount Corian® range cover  
 Space saver convection microwave oven with carousel, built-in light and fan  
 Cable TV hook-up and telephone jack  
 TV antenna and booster  
 Video control box  
 JVC® 20" color TV with remote control in living area and bedroom  
 JVC® VCR with remote control

## INTERIORS

### Throughout Coach

Solid walnut doors and drawers  
 Solid walnut drawer fronts  
 Telestrut hardware on overhead doors  
 Ball bearing roller drawer guides

### Living Area

74" Wonder-bed sleeper sofa  
 Deluxe rocker recliner with swivel base  
 Booth dinette with slide-out storage drawers  
 Deluxe nylon carpet and pad  
 Day/night shades with designer valances  
 Hutch and overhead with beveled mirror (6355)  
 Solid walnut raised panel cabinet doors

### Kitchen Area

Slide-out pantry (not available with side by side refrigerator)  
 Corian® kitchen countertop with Corian® flush mount stove cover  
 Corian® countertop extension (6342 and 6355)  
 Sink cover (wood cutting block)  
 Porcelain sink with Moen® single lever faucet  
 Waste basket  
 Ceramic tile  
 Venetian blinds  
 Silverware organizer

### Bath Area

Ceramic tile  
 Decorative opaque shower glass etching  
 Raised panel doors in bath and bedroom  
 Corian® bathroom lavatory top  
 Medicine cabinet  
 Towel bars in bathroom

### Bedroom Area

Head-to-side queen bed with Corian® top nightstands  
 Wardrobe with mirrored sliding doors  
 Color coordinated bedspread, pillows and shams  
 Radius padded headboard  
 Bedroom vanity with stool and pull out makeup organizer tray (6342)  
 Bed slide with four pull out drawers and storage compartment

Dresser cabinet with four drawers (washer/dryer prep) (6355 and 6356)  
 Deluxe nylon carpet and pad  
 Venetian blinds and valances

## ELECTRICAL SYSTEMS & LIGHTS

50 Amp MagneTek® power converter and charger  
 50 Amp 120V distribution panel and cord  
 Generac® 5.5 kW generator  
 Two 6V deep cycle house batteries (217 Amp/Hour)  
 Battery disconnect switch for house batteries  
 Porch light with interior switch  
 110V patio receptacle  
 Recessed fluorescent lights in ceiling  
 Adjustable reading lights  
 Designer lights in living and bedroom areas  
 Cosmetic light in bathroom  
 10 Watt solar panel (mounted on roof)  
 GFI protected electrical circuit  
 Entry step light

## PLUMBING & LPG SYSTEMS

### Coach Exterior

Heated systems compartment with easy access to hook-ups  
 Demand water system and water pump  
 Holding tank rinse system (black tank only)  
 Winterization anti freeze inlet to pump  
 Outside shower  
 Water heater bypass valve  
 Pressurized water fill with integrated regulator  
 Ten gallon gas/electric water heater

### Kitchen Area

Water filter in kitchen  
 Decorative kitchen and bath faucets

### Bath Area

One-piece fiberglass neo angle shower with seat  
 Residential single lever pressure balancing shower faucet with fixed head  
 Glass shower door and enclosure  
 Porcelain toilet with sprayer

## SAFETY FEATURES

Extra large rear view mirrors with double convex  
 Driver and passenger three point lap and shoulder seatbelts  
 Deadbolt lock on entry door  
 Fire extinguisher  
 Smoke, carbon monoxide (CO) and LPG detectors  
 Egress window(s)

## WINDOWS, DOORS & AWNINGS

Dual pane radius tinted safety glass windows (sliding windows in living area and jalousie windows in kitchen and bedroom)  
 Radius entrance door with clear glass, shade and screen door  
 Electric double entry step with light  
 Patio awning with metal cover\*  
 Slide-out rooms topper awnings\*  
 Private toilet window  
 Bedroom rear picture window  
 Tinted skylight in bathroom

## HEATING, VENTS & AIR CONDITIONING

Thermostatically controlled dual 13.5M BTU ducted roof A/Cs  
 35,000 BTU electronic ignition furnace  
 Ducted heating system  
 Attic fan with wall thermostat and rain sensor in galley/living area  
 12V roof exhaust fan in bathroom  
 Dash automotive heating and A/C system with defroster

## OPTIONAL FEATURES

### Coach Exterior

Slide-out window awnings\*  
 Bedroom window awning(s)\*

### Cockpit Area

Six way power driver seat  
 Six way power passenger seat  
 Leather package: Driver seat with power, extra wide passenger seat, sofa and recliner  
 Leather faced driver seat with power and extra wide passenger seat  
 Leather faced sleeper sofa  
 Leather faced swivel recliner chair  
 Driver door with power window  
 JVC® DVD player (replaces VCR)  
 JVC® CD player (12 disc)  
 400 Watt inverter

### Living Area

Dining table with two wooden and two folding chairs  
 Two wooden folding chairs

### Kitchen Area

12 cu. ft. side-by-side refrigerator with icemaker  
 21" LPG gas oven

### Bath Area

6355 & 6356: Combination washer/dryer

### Bedroom Area

Day/night shades

CHASSIS SPECIFICATIONS	FORD	WORKHORSE
<b>Chassis</b>	Super Duty (22,000 GVWR)	W-22 (22,000 GVWR)
Tires	Goodyear RV 245/70R 19.5 F	Michelin XRV 235/80 R22.5G
Wheels	19.5X6, 8-Lug Steel, SS Liner	22.5X7, 8-Lug Steel, SS Liner
Brakes	Hydro-Boost, 4-Wheel Disc ABS	Hydro-Boost, 4-Wheel Disc ABS
Drive Axle Gear Ratio	5.38:1	5.38:1
Alternator	115 Amp	130 Amp
Chassis Batteries	(1) 750 CCA	(1) 690 CCA
Shock Absorbers	Tuned Bilstein	Tuned Monroe
Chassis Warranty	3 years/36,000 miles	3 years/36,000 miles
<b>Engine</b>	<b>Ford Triton V-10</b>	<b>GM Vortec 8100</b>
Displacement	6.8 Liters (415 cu. in.)	8.1 Liters (496 cu. in.)
Peak Horsepower	310 HP @4,250 RPM	340 HP @4,200 RPM
Peak Torque	425 ft./lbs. @ 3,250 RPM	455 ft./lbs. @ 3,200 RPM
Engine Warranty	3 years/36,000 miles	3 years/36,000 miles
<b>Transmission</b>	<b>Ford 4R100</b>	<b>Allison 1000 Series</b>
Transmission Type	4-Speed Automatic Overdrive	5-Speed Automatic Overdrive
Transmission Warranty	3 years/36,000 miles	3 years/Unlimited miles

WEIGHTS	6342	6355	6356
<b>Ford Chassis</b>			
Gross Vehicle Weight Rating	22,000 lbs.	22,000 lbs.	22,000 lbs.
Gross Combined Weight Rating	26,000 lbs.	26,000 lbs.	26,000 lbs.
Front Gross Axle Weight Rating	7,000 lbs.	7,000 lbs.	7,000 lbs.
Rear Gross Axle Weight Rating	15,000 lbs.	15,000 lbs.	15,000 lbs.
Unloaded Vehicle Weight	TBD	17,400 lbs.	TBD
Maximum Carrying Capacity	TBD	4,600 lbs.	TBD
Cargo Carrying Capacity (CCC)	TBD	2,984 lbs.	TBD
<b>Workhorse Chassis</b>			
Gross Vehicle Weight Rating	22,000 lbs.	22,000 lbs.	22,000 lbs.
Gross Combined Weight Rating	26,000 lbs.	26,000 lbs.	26,000 lbs.
Front Gross Axle Weight Rating	8,000 lbs.	8,000 lbs.	8,000 lbs.
Rear Gross Axle Weight Rating	14,500 lbs.	14,500 lbs.	14,500 lbs.
Unloaded Vehicle Weight	TBD	18,320 lbs.	TBD
Maximum Carrying Capacity	TBD	3,680 lbs.	TBD
Cargo Carrying Capacity (CCC)	TBD	2,064 lbs.	TBD
<b>MEASUREMENTS</b>	<b>5342</b>	<b>5355</b>	<b>5356</b>
Overall Length	35' 0"	36' 0"	36' 0"
Overall Height (Ford Chassis)	11' 9"	11' 9"	11' 9"
Overall Height (Workhorse Chassis)	12' 4"	12' 4"	12' 4"
Interior Height	79 1/2"	79 1/2"	79 1/2"
Interior Width	98 1/2"	98 1/2"	98 1/2"
Exterior Width	102"	102"	102"
<b>TANK CAPACITIES</b>	<b>5342</b>	<b>5355</b>	<b>5356</b>
Water Heater	10 gal.	10 gal.	10 gal.
Gray Tank	60 gal.	60 gal.	60 gal.
Black Tank	50 gal.	50 gal.	50 gal.
Fresh Water Tank(s)	90 gal.	90 gal.	90 gal.
LP Gas Tank (Volume W.C.)	24.2 gal.	24.2 gal.	24.2 gal.

\*Not available on CSA units

Due to continued product improvement. National R. V., Inc. reserves the right to change materials, colors, specifications and prices at any time without notification. Copyright © 2001 by National R. V., Inc. 08/01