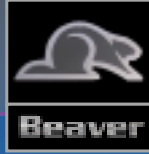
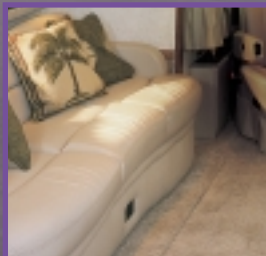


MONTEREY 2003



ONE COACH AT A TIME.





TEMPT YOUR SENSES.

Relax in the luxury of Monterey. Every room is perfectly designed for beauty and comfort. The living

area, in particular, will please your senses with its abundant and luxurious seating, beautiful cabinetry,

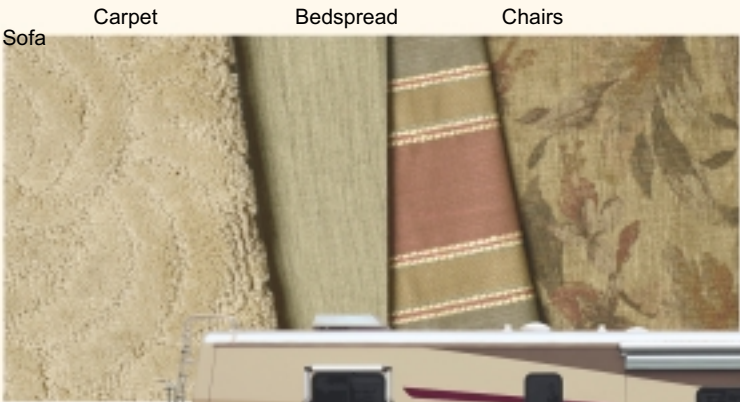
lush carpeting and a well-appointed entertainment center with a stereo, television and VCR.



MONTEREY COLORS

Monterey luxury is enhanced by the wide range of interior design choices. Choose between calming Blue Mist, the warm prints of Mosaic Spice, tropical Coconut Grove or the classic Oakwood Tan. Then decide

between the elegant cabinet wood choices in Oak, Walnut, Maple or Natural Cherry. Make your Monterey the perfect reflection of your good taste.



MOSAIC SPICE



OAKWOOD TAN



CABINET WOOD CHOICES

Oak
Cherry (Option)



Walnut (Option)



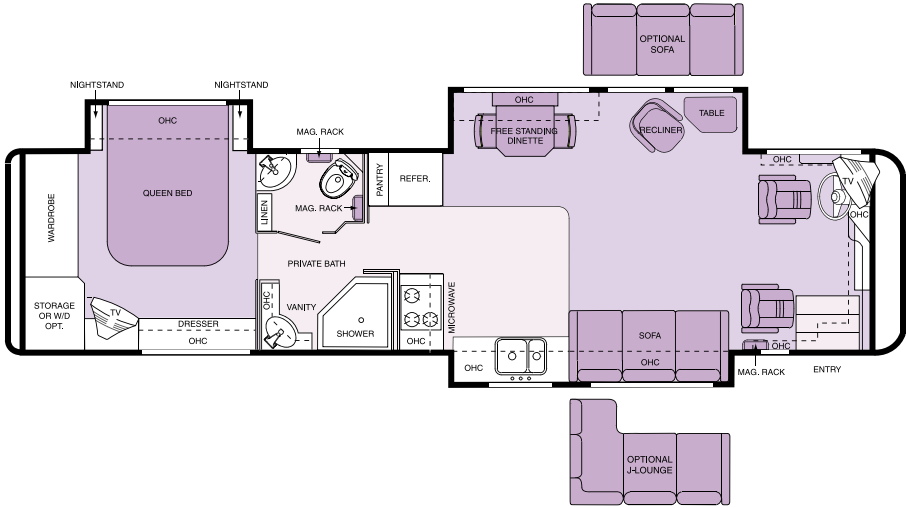
Maple (Option)



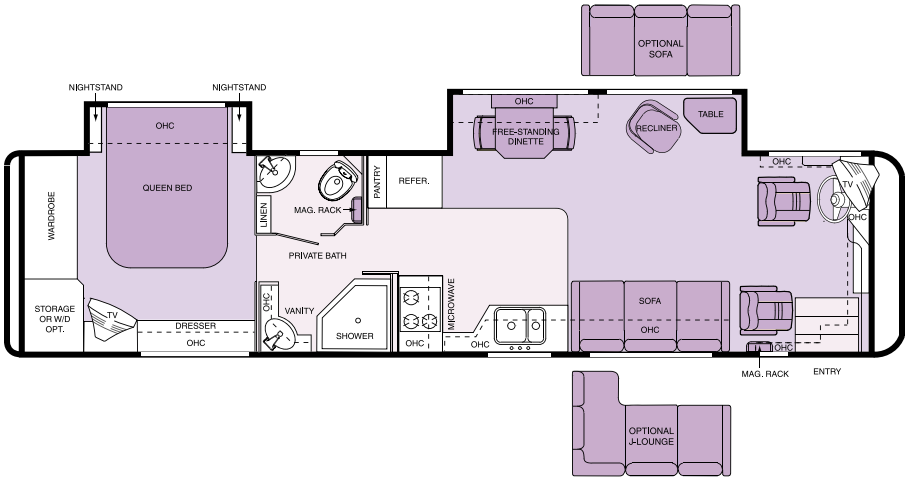
Natural



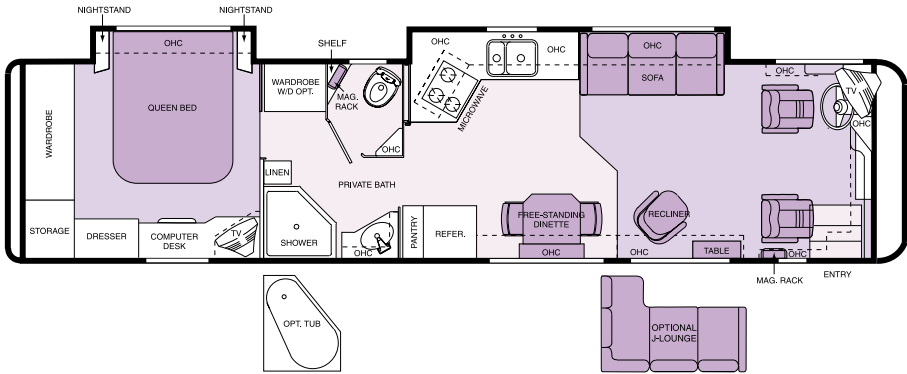
MONTEREY FLOORPLANS



36 VENTURA



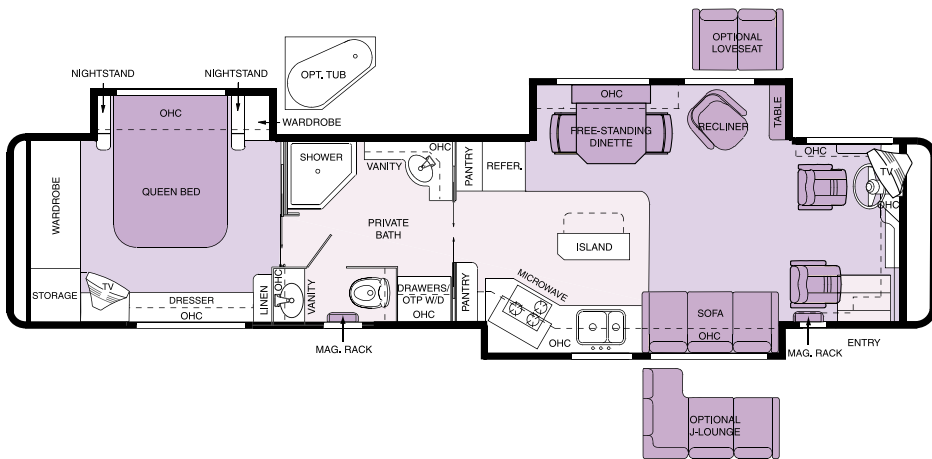
36 PISMO



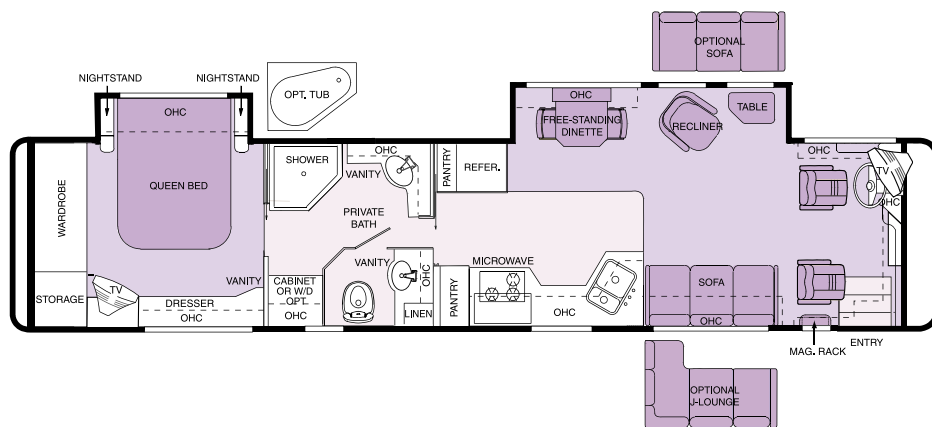
37 SEACIFF



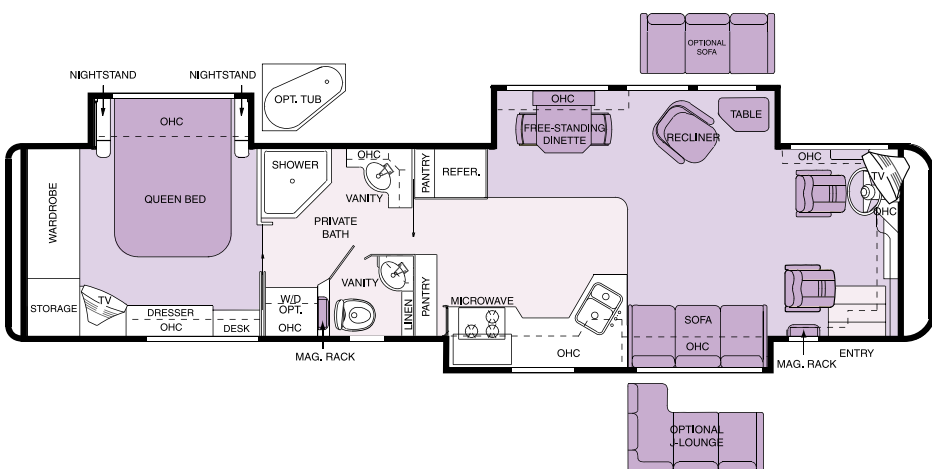
38 HUNTINGTON



40 CARMEL



40 CORONADO



40 NEWPORT

MONTEREY SPECIFICATIONS

BODY CONSTRUCTION

Aluminum-Framed
Superstructure
Seamless One-Piece Molded,
Crowned
Fiberglass Roof
Laminated Gel Coat Fiberglass
Sidewalls
One-Piece Front and Rear
Molded Fiberglass Caps
Power-Controlled, Heated
Exterior Mirrors with
Turn Indicator Lights
Aluminum-Framed Laminated
Floor on Steel Trusses
Foam-Insulated Underbelly
Driving Lights
Insulated Aluminum Pantographic
Baggage Doors
Carpet-Lined Storage
Compartments Slide Out
with Room
Full-Length Beaver Mud Flap
Deluxe Full-Body Paint
Rear Ladder

OPTIONS

Storage Bay Slide-Out Tray (One
Side)
3M® Film Front Mask

COCKPIT

Fiberglass Automotive Dash with
Birds Eye
Burl Instrumentation Panel
White Gauges with Flat Black
Bezels
Multi-Positioned Sunvisors
In-Dash Rear Vision System and
Color Monitor
with AM/FM Stereo and CD
Changer
Adjustable Accelerator and Brake
Pedals
110V, 12V, and Phone Outlets
Cup Holders
Black VIP Tilt and Telescoping
Steering Wheel
Power Steering
Roof-Mounted Air Horns
Vinyl 6-Way Power Pilot and Co-
Pilot Seats
Air-Activated Power Step Well
Cover
Manual Privacy Cab Drapes

OPTIONS

Power Privacy Cab Drapes
Power Sunvisors
UltraLeather™ Pilot and Co-Pilot
Seats
Six-Disc CD Changer
Chrome Power Heated Remote
Exterior Mirrors

APPLIANCES AND ACCESSORIES

Two-Door Refrigerator with Ice
Maker
High-Output 3-Burner Recessed
Cooktop
Convection Microwave with Touch
Control
19-inch Color Stereo TV with
Remote in Living Area
20-inch Color Stereo TV with
Remote in Bedroom
Video Control Box with Dual
Hook-Ups for
DSS and Cable
Living Area Stereo TV and VCR
Wired through
Ceiling Speakers
TV Antenna and Booster
Digital Satellite System Prep
Cable TV Hook-Up and
Telephone Jacks
Washer/Dryer Prep

OPTIONS

25-inch Color Stereo TV with
Remote in Living Area
Combination Washer/Dryer
Fully Automatic Digital Satellite
System
Four-Door Refrigerator with Ice
Maker
Home Theater System with DVD
Player

INTERIOR

Raised-Panel Oak Cabinetry
Solid Wood Square, Raised-
Panel Cabinet Doors
with Hidden Hinges
Carpet-Lined Cabinet Shelves
Low-Friction Roller Drawer
Guides
Brass-Finished Cabinet
Hardware
Solid Surface Kitchen Countertop
with Integrated
Solid Surface Sink

Fixed Dinette Table with 2 Free-
Standing Chairs
Two Folding Dinette Chairs
Floor-to-Ceiling Strip Mirrors in
Kitchen Area
Ceramic Tile in Kitchen and Bath
Padded Ceiling Treatment
Over-Sized Rear Wardrobe
Closet with Mirrors
Solid Surface Bathroom
Countertop with

Integrated Sink
Decorative Glass Shower Door
with Brass Frame
Medicine Cabinet with Shelves
Bathroom Mirror
Towel Bar in Bathroom
Queen Bed with Shirt Closet and
Nightstands
Bedspread with Pillows
Nylon Carpeting and Pad in
Living Area
and Bedroom
Day/Night Pleated Shades in
Bedroom with
Black-Out Shades
Mini-Blinds in Living Area,
Kitchen and Bathroom
Fabric Swivel Recliner
Fabric Sleeper Sofa with Drawer

OPTIONS

Décor: Oakwood Tan, Mosaic
Spice, Blue Mist,
Coconut Grove Green
Walnut Cabinetry
Maple Cabinetry
Natural Cherry Cabinetry
UltraLeather™ Sofa with Drawer
(40' Models)
UltraLeather™ Euro-Recliner with
Ottoman
UltraLeather™ Swivel Recliner
Booth Dinette
Wilsonart® Plank Flooring in
Kitchen and Bathroom
Raised-Panel Refrigerator Doors
UltraLeather™ Loveseat (37'
Seaciff)
Day/Night Shades in Living Area

ELECTRICAL SYSTEMS AND LIGHTS

50-Amp 120V Distribution Panel
Onan® 7.5 kW QD Diesel
Generator with
Hour Meter on Power Slide-Out

2,000-Watt Inverter
Aladdin Video Coach Systems
Monitor
Solar Panel
Two 31MHD Chassis Batteries
Four 6V Deep-Cycle Coach
Batteries
Battery Disconnect Switches
Power Entry Step with Light
Lights in Outside Storage
Compartment
120V Receptacles inside Storage
Compartment
Computer Hook-Up with Phone
Jack in Dinette Area
Fluorescent Lighting Throughout
Decorative Dining Light
Cosmetic Vanity Lights in Bathroom
Halogen Lights under Overhead
Cabinets
Halogen Lights Mounted in Living
Room Ceiling
Decorative Lighting in Living Room
and Bedroom

**PLUMBING AND
LP SYSTEMS**
Manifold Water Control System
Water Pump Switch in Galley Area
Water Purifier in Ice Maker
China Toilet
Shower
No-Fuss Flush Black Holding Tank
Rinsing System
Insulated Systems Compartment
with Easy
Access to Hook-Up
Outside Shower with Hot and Cold
Water

OPTION
Bath Tub: (N/A: 36' Pismo, 36'
Ventura,
40' Coronado)

**HEATING, VENTS, AND
AIR CONDITIONING**
Two Low-Profile Ducted 13.5M BTU
Roof

Air Conditioners with Electronic
Ignition and
Heat Pumps
Electronic AC/Heat Climate Control
System
In-Floor Ducted Heating System
12V Attic Fan in Bath
12V Attic Fan in Kitchen

OPTION
Hydro-Hot® Heating System
**WINDOWS, DOORS AND
AWNINGS**
Radius® Dual-Pane, Safety Glass,
Dark-Tinted
Slider Windows
Front Entry Door with Removable
Screen
and Awning
Slide-Out Topper Awnings
Interior and Exterior Grab Handles
Tinted Skylight in Bathroom
Patio Awning with Color-
Coordinated Hardware

OPTIONS
Bedroom Window Awnings
Girard® Automatic Patio Awning
Carefree® Automatic Patio Awning
with
Color-Coordinated Hardware

SAFETY
Fire Extinguisher
Deadbolt Lock on Entrance Door
120V GFI Protected Circuit
(Kitchen, Bathroom,
Exterior)
LP Gas Detector
Smoke Detector
Carbon Monoxide Detector
Integrated Pilot and Co-Pilot 3-Point
Seat Belts
(Lap and Shoulder)
Third Brake Safety Light
Egress Window

CHASSIS/ENGINE/SUSPENSION
Roadmaster® M-Series Chassis

Cummins® ISC 350 HP Engine with
Allison® 3000
MH World Transmission and
Electronic Shifter
Torque: (950 lbs./ft. Max. Net at
1,400 RPM)
Rear Axle Ratio: 4.30:1
Cubic Inch Displacement:
504.5"/8.3L
140-Amp Alternator
Dual Fuel Fill
Polished Aluminum Wheels
Tires: 275/70R/22.5
Cushion Air Glide Suspension with
8 Air Bags and
8 Shock Absorbers
Anti-Lock Braking System with Full
Air Brakes (Drum)
Pac Exhaust Brake
Automatic Traction Control
Auto Slack Adjusters
Fuel/Water Separator
Air Cleaner Restriction Indicator
Engine Block Heater with Switch on
Dash
Hydraulic Leveling System
10,000 lb. Hitch Receiver*

OPTIONS
Polished Aluminum Wheels

*Your towed vehicle should be equipped with
auxiliary brakes if
the weight of the towed load exceeds 1,000 lbs.

WEIGHT RATINGS (LBS.)	36' PISMO	36' VENTURA	37' SEACLIFF	38' HUNTINGTON
Gross Vehicle	32,800	32,800	32,800	32,800
Gross Combined	42,800	42,800	42,800	42,800
Front Gross Axle	12,800	12,800	12,800	12,800
Rear Gross Axle	20,000	20,000	20,000	20,000

WEIGHT RATINGS (LBS.)	40' CORONADO	40' CARMEL	40' NEWPORT
Gross Vehicle	32,800	32,800	32,800
Gross Combined	42,800	42,800	42,800
Front Gross Axle	12,800	12,800	12,800
Rear Gross Axle	20,000	20,000	20,000

MEASUREMENTS	36' PISMO	36' VENTURA	37' SEACLIFF	38' HUNTINGTON
Wheelbase	223"	223"	233"	247"
Overall Length	36' 10"	36' 10"	37' 10"	38' 10"
Overall Height (with A/C)	11' 9"	11' 9"	11' 9"	11' 9"
Interior Height	6' 7"	6' 7"	6' 7"	6' 7"
Exterior Width	102"	102"	102"	102"

MEASUREMENTS	40' CORONADO	40' CARMEL	40' NEWPORT
Wheelbase	270"	270"	257"
Overall Length	40' 10"	40' 10"	39' 9"
Overall Height (with A/C))	11' 9"	11' 9"	11' 9"
Interior Height	6' 7"	6' 7"	6' 7"
Exterior Width	102"	102"	102"

TANK CAPACITY (GAL.) All tank capacities are approximate. Actual “usable capacity” may vary as a result of variances in installation and fabrication.

Water Heater	10	10	10	10	10
Gray Tank	50	50	50	50	50
Black Tank	50	50	50	50	50
Fresh Tank	100	100	100	100	100
LP Tank*	51	51	51	51	51
Fuel Tank	99	99	99	99	99

**Actual filled LP capacity is 80% of listing due to safety shut-off required on tank.*

Due to the large variety of options and floorplan arrangements available to our customers, actual weights for each unit may differ. Beaver Motor Coaches provides a weight sticker on each unit we produce, which includes that unit's tank capacities and approximate weight. Consult your local Beaver Motor Coaches dealer for unit availability and further information. The information printed in this brochure reflects product design, fabrication, and component parts at the date of printing. The manufacturer reserves the right, at any time, to make changes in product design, material or component specifications as its sole option, without notice. This includes the substitution of components of a different brand or trade name, which will result in comparable performance. All information printed in this brochure is subject to change after the date of printing. Some features shown or mentioned in this brochure are optional and may only be available in selected floor plans. Photographs may show props or decorations that are not standard equipment on Beaver Motor Coach models. Beaver Motor Coaches, the Beaver logo and its design, are registered trademarks. All other products and company names are trademarks and/or registered trademarks of their respective holders.