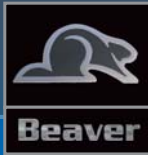


SANTIAM 2003



ONE COACH AT A TIME.





**SIT
BACK
AND
RELAX.**

The Santiam is a favorite among those who appreciate the finer things in life. Now, with a host of new additions and changes, it's better than ever. No matter which floorplan you

select, you'll love the free-standing dinette table with integrated wall cabinets. And a new, wider entry makes access even easier. New options like UltraLeather™

upholstery and an easy-to-love recliner make taking a seat particularly compelling.

Carpet

Bedspread

Chairs

Sofa

GOLDEN ESSENCE



Carpet

Bedspread

Chairs

Sofa

ICE CASTLE BLUE



SANTIAM COLORS

The Santiam's luxurious color-tones offer handsome interior décor options including; Golden Essence, Legacy, Ice Castle Blue and Royal Lavender. Consider the possibilities and choose the combination that best fits your style.

Carpet

Bedsread

Chairs

Sofa

LEGACY



Carpet

Bedsread

Chairs

Sofa

ROYAL LAVENDER



CABINET WOOD CHOICES

Autumn Haze Oak

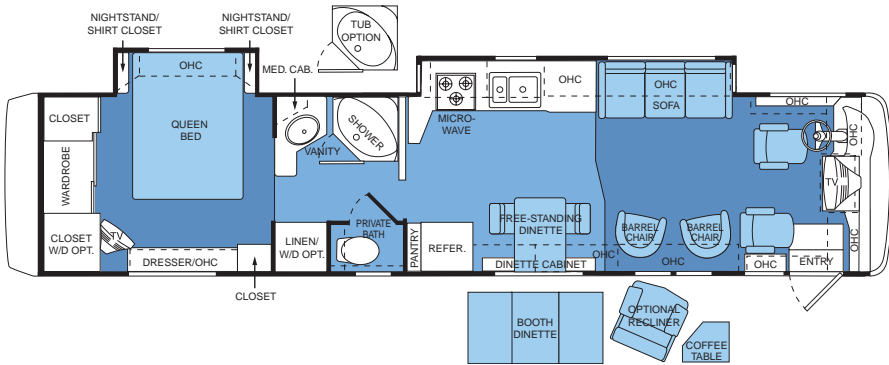
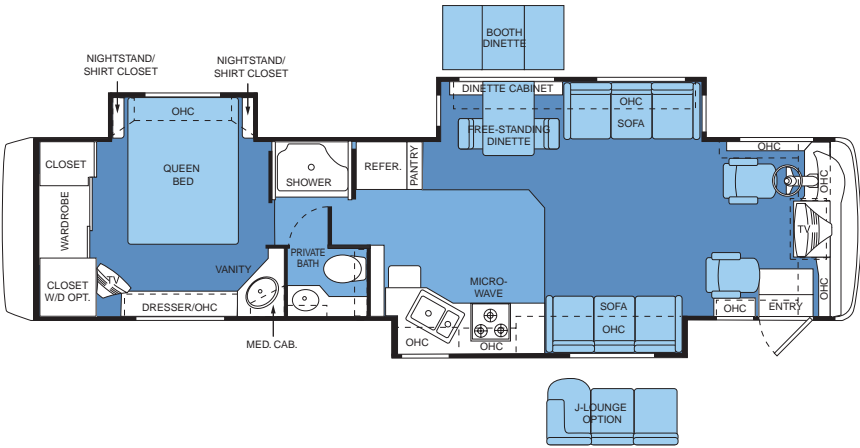
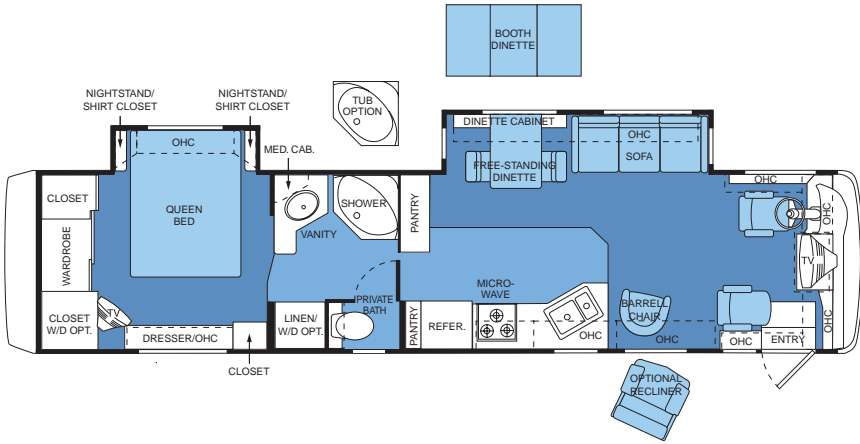
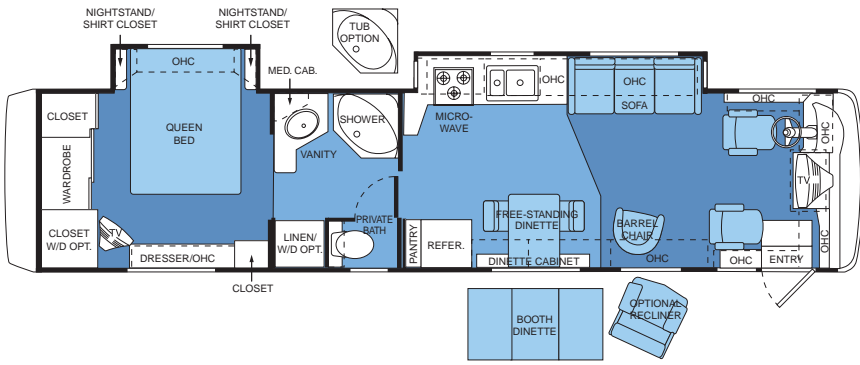
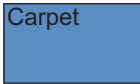
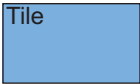


Regal Cherry (Option)



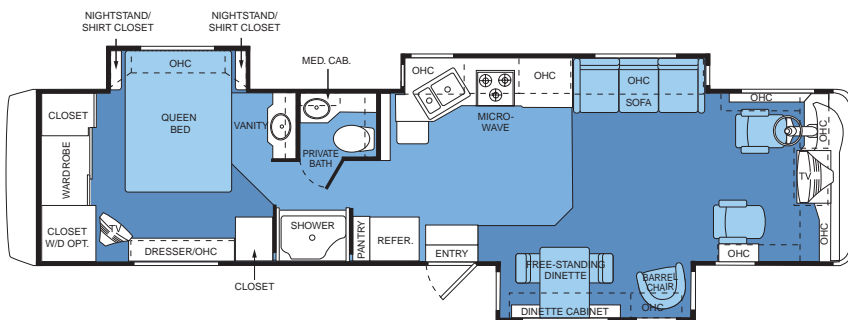
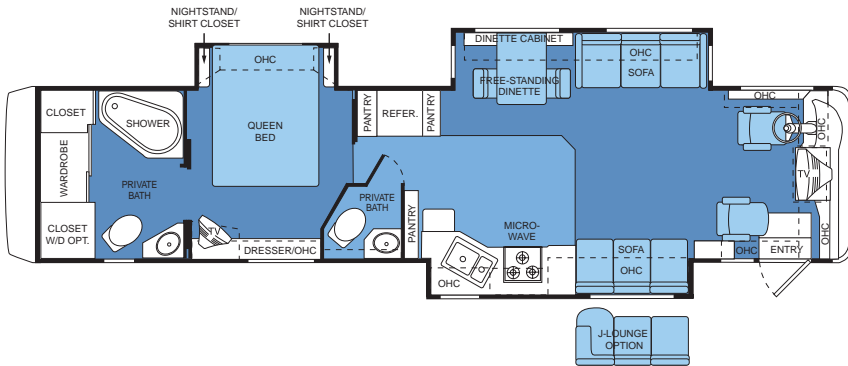
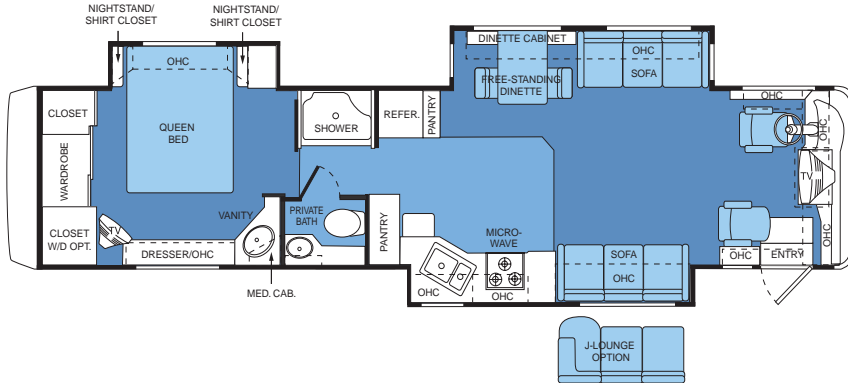
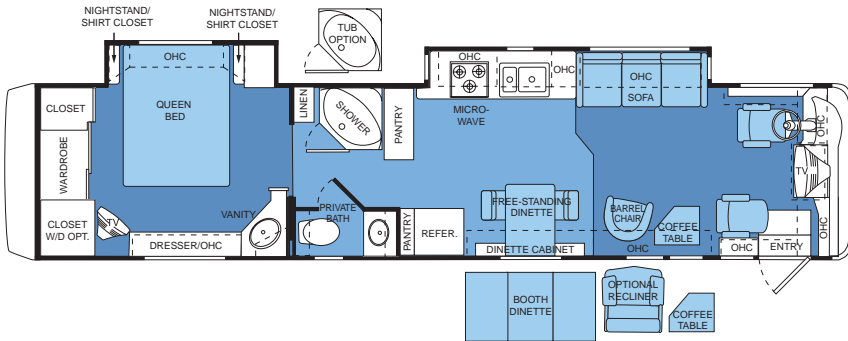
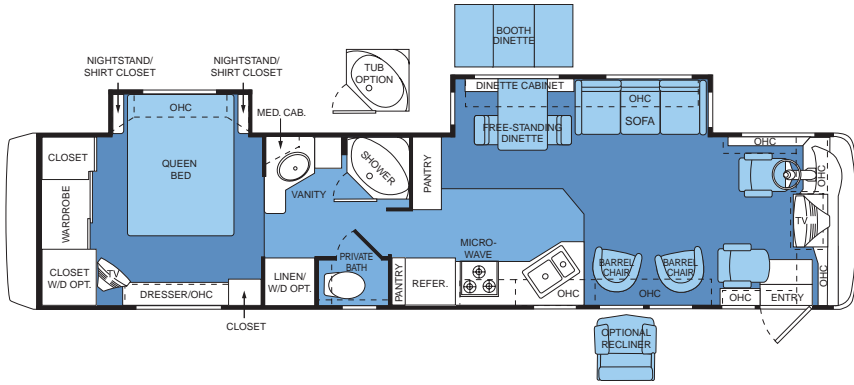
Maple (Option)





Tile

Carpet



SPECIFICATIONS

BODY CONSTRUCTION

Alumaframe Superstructure
Steel Cage Construction
Peaked Aluminum Roof with
Fiberglass Insulation
Smooth Gel Coat Fiberglass Exterior
Walls
Front & Rear Molded Fiberglass Cap
Fiberglass Front and Rear Bumpers
(Integrated in Caps)
Metal Fuel Access Door
Stamped Grill Door for Transmission
Cooler
Engine Door Struts
Angled Fiberglass Engine Cover
Steel Framed Floor
Laminated Structurwood® Flooring
Air-Activated, Power Step Well Cover
Interior Paneling with 3/4" Insulation
Foam Insulation Underbelly with
Luaun Backer
Power-Heated Remote Exterior
Mirrors
Baggage Doors with Integrated
Single-Handle
Latches
One-Piece Polyethylene Pass-
Through
Storage Compartment
Wheel Mud Flaps
Exterior Vinyl Graphics
Entry Step Storage
Rear Ladder

OPTIONS

3M® Film Front Mask
Storage Bay Slide-Out Tray (Pass-
Through)
Full-Length Beaver Mud Flap
Chrome Power-Controlled Heated
Exterior Mirrors

COCKPIT

Fiberglass Automotive Dash with
Roman Bronze
Instrumentation Panel
CD Player/Radio with 6 Speakers
CB Prep with Antenna
Multi-Positioned Sunvisors
Rear Vision System with Audio
Adjustable Accelerator and Brake
Pedals
Side Docking Lights
Audible Turn Signals
Intermittent Windshield Wipers
18" Tilt/Telescopic Steering Wheel
Cruise Control
Power Steering
Air Horns
UltraLeather™ Pilot & Co-Pilot Seats
with 6-Way
Power Pilot Seat
Carpet Driver and Passenger Floor
Mats

OPTIONS

Six-Way Power Co-Pilot Seat
Extra-Wide Co-Pilot Seat with Power
Footrest
(Requires 6-Way Power Co-Pilot)
Power Sunvisors

APPLIANCES AND ACCESSORIES

Large Double Door Refrigerator with

Spacesaver Convection Microwave
with Touch Control
25-inch Stereo Color TV with Remote
Control in
Living Area
Stereo VCR 19-inch Color TV with
Remote Control
in Bedroom
Stereo TV & VCR Wired through
Ceiling Speakers
TV Antenna with Booster and TV
Jacks
Video Control Box with Dual Hook-Up
for
DSS and Cable
Digital Satellite System Prep
Cable TV Hook-Up and Telephone
Jacks
Washer/Dryer Prep

OPTIONS

Large Double-Door Refrigerator with
Ice Maker
Large Four-Door Refrigerator with Ice
Maker
Three-Burner Range with Oven
Home Theater System with 5-Disc
DVD/CD
Ten-Disc CD Changer
Combination Washer/Dryer (Bedroom)
Combination Washer/Dryer
(Bathroom)
(38PBD, 38PBDD, 40PBD,
40PBDD)
Fully Automatic Digital Satellite
System
Exterior Entertainment Center
(AM/FM/CD Stereo
with Speakers) (N/A: 36PBD,
38PBD, 40PBD)

INTERIOR

Autumn Haze Oak Cabinetry
Solid Wood Square Raised-Panel
Doors
Hardwood Cabinet Ends
Telestrut Overhead Storage Doors and
Positive Catches on All Other Doors
Low-Friction Roller Drawer Guides
Brass Finished Cabinet Door
Hardware
Solid Surface Kitchen with Stainless
Steel Sink
Dinette & Nightstand Laminate
Countertops with
Solid Surface Edge
Kitchen Pantry with Adjustable
Shelves
Legless Free-Standing Dinette Table
with 2 Chairs
and 2 Folding Chairs
Wastebasket under Stove Area
(Where Applicable)
Four-Compartment Drawer Organizer
Ceramic Tile in Bathroom and Kitchen
Padded Vinyl Ceiling
Over-Sized Rear Wardrobe Closet
with Mirrors
Solid Surface Bathroom Countertop
with
Integrated Sink
Medicine Cabinet with Shelves
Bathroom Mirror
Towel Bars in Bathroom

Area and Bedroom
Day/Night Pleated Shades in Living
Area and
Black-Out Shades in Bedroom
Mini-Blinds in Kitchen and Bathroom
Fabric Barrel Chair (Two in 40PBD,
40PBDD)
(N/A: 38PST, 40DST, 40PST)
Easy Bed Sofa with Drawer (34PBD,
34PST,
36PBD, 36PST, 38PST, 38PBD,
40PBD, 40PWD,
40PDT, 40DST)
Hide-a-Bed Sofa (40PBDD, 40PST,
40DST,
38PBDD, 38PST)
Coffee Table (40PWD)

OPTIONS

Regal Cherry Cabinetry
Maple Cabinetry
Décors: Royal Lavender, Legacy,
Golden Essence,
Ice Castle Blue
Plank Flooring in Kitchen & Bath
UltraLeather™ Recliner (N/A: 38PST,
40PST, 40DST)
Fabric Recliner (N/A: 38PST, 40PST,
40DST)
Fabric Magic Bed Sofa (N/A: 34PST)
UltraLeather™ Magic Bed Sofa (N/A:
34PST)
UltraLeather™ Easy Bed Sofa (34PST,
36PST,
38PBDD, 38PST, 40PBDD, 40PST,
40DST)
UltraLeather™ Electric Sofa (36PBD,
38PBD, 40PBD,
40PWD, 40PDT)
UltraLeather™ J-Lounge (34PST,
36PST, 40DST,
40PST, 38PST)
UltraLeather™ Euro-Recliner with
Ottoman
(N/A: 38PST, 40PST, 40DST)
Coffee Table (40PBD, 40PBDD)

ELECTRICAL SYSTEMS AND LIGHTS

50-Amp 120V Distribution Panel and
Power Cord
Onan® 6.5 kW LP Generator
1,500-Watt Inverter
Four 6V Batteries (House)
Two Group 31 Batteries (Chassis)
Locking Battery Disconnect Switch at
Front Door
12V and 110V Outlets in Cockpit Area
Porch Light
Power Entry Step with Light
Water Pump Switch in Bathroom and
Service Bay
Lights in Outside Storage
Compartment
120V Receptacles in Outside Storage
Compartment
Underhood Utility Light
Computer Hook-Up with Phone Jack
in Dinette Area
Systems Control Center
Fluorescent Lighting Throughout
Decorative Dinette Light
Cosmetic Vanity Lights in Bathroom
Halogen Lights under Living Room

OPTIONS

- Energy Management System
- Solar Panel
- Onan® 7.5 kW QD Diesel Generator

PLUMBING AND LP SYSTEMS

- Demand Water System and Water Pump
- Water Heater By-Pass Valve
- Ten-Gallon LP Gas/Electric Water Heater with Electronic Ignition (DSI)
- One-Piece Fiberglass Shower (N/A: 40DST)
- Garden Tub (40DST)
- Winterization Valving System
- Porcelain Toilet with Sprayer
- No-Fuss Flush Black Holding Tank Rinsing System
- Insulated Systems Compartment with Easy Access to Hook-Up
- Gravity and Pressurized Water Fill
- Outside Shower with Hot and Cold Water
- Water Filter in Kitchen

OPTIONS

- Bathtub (N/A: 36PST, 38PST, 40PST, 40DST, 40PDT)

HEATING, VENTS, AND AIR CONDITIONING

- Two Low-Profile 13.5M BTU Roof Air Conditioners with Ducted Air and Wall Thermostat with Heat Pumps
- Electronic Ignition Furnace
- Electronic AC/Heat Climate Control

System

- In-Floor Ducting Heating System
- 12V Roof Vent in Bath
- Attic Fan in Kitchen
- 12V Wet Bay Heater

OPTIONS

- 12V Attic Fan in Bathroom

WINDOWS, DOORS AND AWNINGS

- Flush-Mount Radius® Dual-Pane, Safety Glass, Dark-Tinted Slider Windows
- Front Entry Door with Removable Screen and Awning (N/A: 40PDT)
- Side Entry Door with Removable Screen (40PDT)
- Interior and Exterior Grab Handles
- Tinted Skylight in Bathroom
- Acrylic Patio Awning with Metal Cover
- Omega® Slide-Out Awnings
- Front Door Awning

OPTIONS

- Carefree® Automatic Patio Awning
- Window Awning

SAFETY

- Fire Extinguisher
- Deadbolt Lock on Entrance Door
- 120V GFI Protected Circuit (Kitchen, Bathroom, Exterior)
- LP Gas Detector
- Smoke Detector
- Carbon Monoxide Detector
- Pilot and Co-Pilot 3-Point Seat Belts (Lap and Shoulder)
- Third Brake Safety Light
- Egress Window

CHASSIS/ENGINE/SUSPENSION

- Roadmaster RR8R-Series Chassis
- Cummins® ISC 330 Engine with Allison® 3000 MH 6-Speed World Transmission and Electronic Shifter
- Torque: 950 lbs/ft. Max. Net at 1,400 RPM
- Cubic Inch Displacement: 504.5"/8.3L
- 160-Amp Alternator

- Rear Axle Ratio: 4.30:1
- Dual Fuel Fill
- Radial Tires: 275/70R/22.5
- Stainless Steel Wheel Simulators
- Cushion Air Glide Suspension with 8 Outboard Mounted Air Bags and 8 Gas Shock Absorbers
- Anti-Lock Braking System with Full Air Brakes (Drum)
- Pac Exhaust Brake
- Auto Slack Adjusters
- Fuel and Water Separator
- Fuel Filter
- Rear Side Air Intake
- Engine Block Heater with Switch on Dash
- Air Cleaner Restriction Indicator
- Manual Leveling System
- 10,000 lb. Hitch Receiver with 6-Point Connector
- Undercoating
- Automatic Traction Control

OPTIONS Polished Aluminum Wheels

WEIGHT RATINGS (LBS.)	34PBD	34PST	36PBD	36PST	38PBD	38PBDD	38PST
Gross Vehicle	32,000	32,000	32,000	32,000	32,000	32,000	32,000
Gross Combined	42,000	42,000	42,000	42,000	42,000	42,000	42,000
Front Gross Axle	12,000	12,000	12,000	12,000	12,000	12,000	12,000
Rear Gross Axle	20,000	20,000	20,000	20,000	20,000	20,000	20,000

WEIGHT RATINGS (LBS.)	40PBD	40PBDD	40PWD	40PST	40DST	40PDT
Gross Vehicle	32,000	32,000	32,000	32,000	32,000	32,000
Gross Combined	42,000	42,000	42,000	42,000	42,000	42,000
Front Gross Axle	12,000	12,000	12,000	12,000	12,000	12,000
Rear Gross Axle	20,000	20,000	20,000	20,000	20,000	20,000

MEASUREMENTS	34PBD	34PST	36PBD	36PST	38PBD	38PBDD	38PST
Wheelbase	196"	196"	216"	216"	242"	242"	242"
Overall Length	35' 2"	35' 2"	36' 10"	36' 10"	39'	39'	39'
Overall Height	12' 0"	12' 0"	12' 0"	12' 0"	12' 0"	12' 0"	12' 0"
Interior Height	6' 6"	6' 6"	6' 6"	6' 6"	6' 6"	6' 6"	6' 6"
Interior Width	94.5"	94.5"	94.5"	94.5"	94.5"	94.5"	94.5"
Exterior Width	100.5"	100.5"	100.5"	100.5"	100.5"	100.5"	100.5"

MEASUREMENTS	40PBD	40PBDD	40PWD	40PST	40DST	40PDT
Wheelbase	256"	256"	256"	256"	256"	256"
Overall Length	40' 2"	40' 2"	40' 2"	40' 2"	40' 2"	40' 2"
Overall Height	12' 0"	12' 0"	12' 0"	12' 0"	12' 0"	12' 0"
Interior Height	6' 6"	6' 6"	6' 6"	6' 6"	6' 6"	6' 6"
Interior Width	94.5"	94.5"	94.5"	94.5"	94.5"	94.5"
Exterior Width	100.5"	100.5"	100.5"	100.5"	100.5"	100.5"

TANK CAPACITY (GAL.) All tank capacities are approximate. Actual "usable capacity" may vary as a result of variances in installation and fabrication.

Water Heater	10
Gray Tank	60
Black Tank	39
Fresh Tank	95