

The logo for American Eagle, featuring the word "American" in a white, elegant script font with a registered trademark symbol, and the word "EAGLE" in a bold, white, sans-serif font below it. The background of the entire advertisement is a large, stylized American flag with a textured, fabric-like appearance. The stars are in a golden-brown color, and the stripes are in shades of red, white, and blue, though the blue is less prominent. The flag is draped across the top and sides of the image.

American[®]
EAGLE

from American Coach







S O M E T I M E S , A L L W E H A V E
T O D O I S L O O K A R O U N D U S
F O R I N S P I R A T I O N .

Beauty is said to be in the eye of the beholder. Yet nature often sets the standard for what our eyes hold to be beautiful. Naturally sculpted underground caverns. Aerodynamically designed roof lines. Breathtaking oceanside sunsets. Artistically crafted full paint exteriors.

Just as every part of our great nation has a distinctive terrain and foliage that is unique to its environment, American Eagle® has a new look and style that is unique to the motorhome industry. Whether

you are smitten by its shape or by its blend of colors, the American Eagle is truly inspired.

Of course, our new exterior is only just the beginning. Inside American Eagle you will discover yet another new world of luxury accented by elegant furnishings, quality craftsmanship and all the latest in high tech gadgetry.

We invite you now to take a closer look at the dramatic difference color and design can make in an American Eagle.



W E C A L L I T T H E W O W F A C T O R .

Our stunning new exterior graphics and finishes featuring “full body paint” are not for the faint of heart. They are definitely designed to make an instant and memorable lasting impression.

For an extra touch of flash, American Eagle comes

with color coordinated awnings and shiny solid chrome mirrors, wheels, rear bumper and rear ladder.

Actually, no matter from what angle you choose to view an American Eagle, there’s always something special that’s sure to catch your eye.



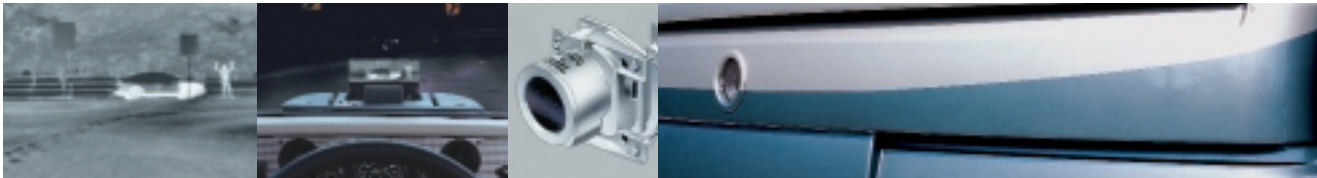
SEEING THE ROAD AHEAD IN A WHOLE NEW LIGHT.

The American Eagle 50" bus style windshield gives you an unobstructed and panoramic view no matter where you travel during the day. But imagine being able to see what lies beyond the reach of your headlights at night! That's exactly what Raytheon Night Vision now helps you to do.

Thanks to infrared technology, optional Raytheon Night Vision projects an image on a Heads Up Display (HUD) that helps to reveal unexpected vehicles, people, animals or obstructions lurking on the highway ahead.

A black and white image appears just below a driver's line of sight. This way the Night Vision display is always available at a glance and becomes a natural checkpoint for the driver, much like a rearview mirror.

These images are captured by a Night Vision camera that is discreetly mounted in the center front of the American Eagle grille. For nighttime driver safety and convenience, you can't do any better than Raytheon Night Vision found only on American Coach.



At American Coach, driver and passenger safety is of supreme importance. That's why we go the extra mile each model year to include the very latest in safety innovations.





Before we put you in the driver's seat, we put ourselves there to make sure everything is just right. Because at American Coach we know a comfortable driver is a happy driver.



Y O U R R E C L I N E R A T H O M E S H O U L D B E T H I S C O M F O R T A B L E .

People who say they don't like to drive a motorhome, haven't driven an American Eagle. From the comfortable plush leather seat to the adjustable Smart Wheel steering system, American Eagle is not only a pleasure to own, it's also a pleasure to drive.

The entire cockpit area is ergonomically designed to position controls within easy access. Large easy-to-read dials and buttons allow you to make adjustments. American Eagle also has plenty of storage compartments for the little incidental items you use while on the road, including

beverage holders, drawers and map pocket storage. And, for passenger comfort, a large window and a convenient electric footrest.

In addition to our Night Vision Heads Up Display, an optional XM satellite radio and optional Global Positioning System (GPS), American Eagle also offers Road Relay capability for monitoring engine and vehicle subsystem functions or Trip Tek, a high tech information system. Trip Tek monitors gas mileage, temperatures, travel time and engine data, and includes a compass and a customer service directory.





A FEW SMALL INCHES CAN MAKE
A BIG, BIG DIFFERENCE.

No, you're not getting shorter. American Eagle has grown taller. Three inches of headroom to be exact. And what a dramatic difference these three inches have made. Not only in headroom, but also in overhead storage featuring new roomy squared off cabinets with gold hardware.

Ceiling height, of course, isn't the only thing you'll immediately notice. Gorgeous new wall board treatments, rich Villa® leather furniture, new optional patterned inlaid carpeting

and mirrored ceiling plenum are sure to draw your attention. As will your choice of wood cabinetry, including walnut, cherry, maple and alpine oak.

As for those beautiful sounds you hear? Well, they're emanating from American Eagle's Sony® home theater system, a complete entertainment package consisting of an optional 42" Sony® plasma TV, VCR, DVD, AM/FM radio, DSS satellite system and five Sony® cube speakers and subwoofer.



When you take ownership of an American Coach, rest assured that you are receiving only the finest quality brand name appliances, fixtures, furnishings, and equipment. We wouldn't have it any other way.



American Coach owners are, historically, vibrant and active people who frequently enjoy going out to eat. When they don't, however, we've made sure they have everything they need to comfortably prepare a meal at home.



N O R E S E R V A T I O N S R E Q U I R E D .

Welcome to the *Le Eagle*. Your very own private dinette with fully equipped galley. You don't need reservations, but just about everything else you could possibly need is here, including a three burner range with oven, GE Advantium microwave, 4-door Norcold® refrigerator, polished Corian® counter top and sink covers, and a convenient MOEN®

pull out faucet. There are also plenty of quality-built cabinets and drawers for storing your pots, pans, plates and party supplies.

Your dinette has elegant seating for four at a Corian® table with extension and four comfortably upholstered chairs. New overhead cabinets and wall cabinets are now standard. As they say in fine eating establishments everywhere, "Bon Appetite"!



“S U I T E” D R E A M S & M E M O R I E S
A R E M A D E O F T H I S .

Good days and good times call for a good night's sleep. American Eagle is prepared to provide you with all three. But before you pull down the covers on your optional king size bed and settle in to watch a little TV on your 20" Sony® Vega, you might consider a long relaxing hot shower or bath in our new optional full size tub with shower (42F only).

The American Eagle tub/shower with gold fixtures, brass trimmed glass door and overhead skylight is a perfect

way to call it a day under the stars. For those who prefer a little more privacy or protection from the sun's morning rays, American Eagle also now provides a skylight cover (G & Q only).

From combination washer and dryers and Corian® topped vanities to cedar lined wardrobes, rain sensor vents and optional ceiling fans, American Eagle makes both the start and finish of your day a surprisingly "suite" experience.



If you are a typical American Coach owner, you probably maintain an extremely active lifestyle. When you're ready to call it a day, the bedroom of the American Eagle invites you to relax and unwind in luxury and comfort.







Entryways tell a lot about the status of any motor home. American Eagle is no exception. A lighted entry door handle adds a classic touch that says you're about to enter something very special. As does the keyless entry, Corian® stepwell with power step cover and tastefully designed awning to protect you from the elements as you board.



W I T H A M E R I C A N E A G L E,
A F I N I S H E D B A S E M E N T C O M E S S T A N D A R D .

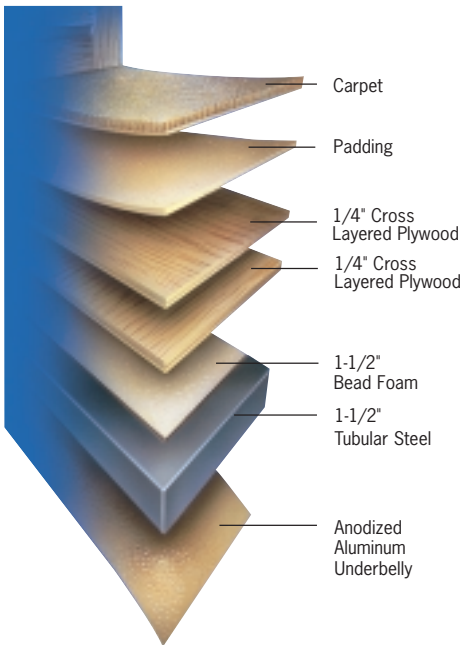
What you see down below also says volumes about what's going on upstairs in an American Eagle. Easy to open pantograph luggage doors with optional keyless entry is just one of many little conveniences you'll come to appreciate. As is the easy-to-read tank monitoring system and well lighted, color coded work station for water,

sewer and electrical hook-ups.

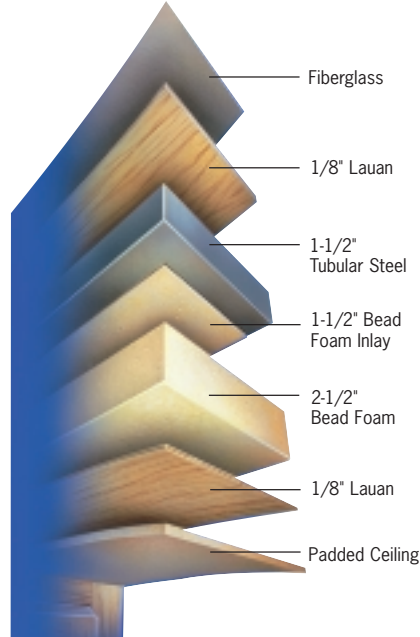
Repeat buyers of American Eagle have nothing but great things to say about the ease of generator access thanks to our push button power slide-out. They're equally excited about the abundant amount of storage that a 54" standard slide-out has to offer. All slide-out trays have rubber floor mats to avoid shifting of stored items during transit.

QUALITY CONSTRUCTION
COMES STANDARD ON EVERY
AMERICAN EAGLE.

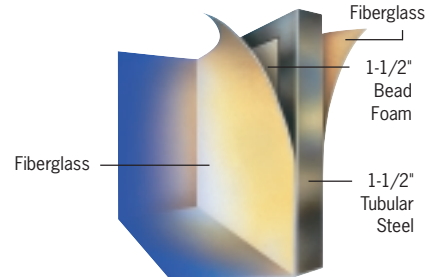
7-LAYER FLOOR WITH
ENCLOSED UNDERBELLY



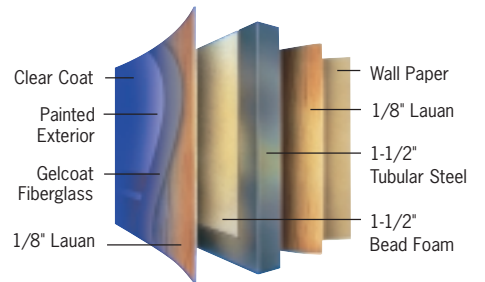
7-LAYER CEILING
WITH FIBERGLASS ROOF



INSULATED STORAGE
COMPARTMENT



FIBERGLASS SIDEWALLS



Take any American Eagle for a spin and you'll quickly notice its luxurious ride and superb handling. Spartan custom platform features include a strong foundation with double cross-members reinforced and fastened with the industry's highest quality nuts & bolts. Spartan's Eurotech electrical system is one of the best in the industry. ABS brake testing ensures braking performance before your platform ever leaves the factory. Roadside Companion is Spartan's 24 hour service hotline that gives you the support you need wherever you go.

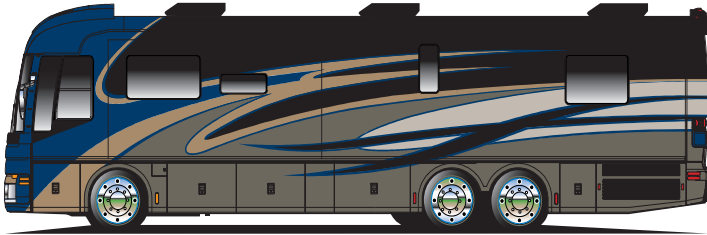
You'll also be comforted to know your Spartan platform was designed and built by a number of dedicated Spartan engineers who ensure tomorrow's technology is already engineered into each platform today. Rest assured, American Coach wouldn't settle for anything less.



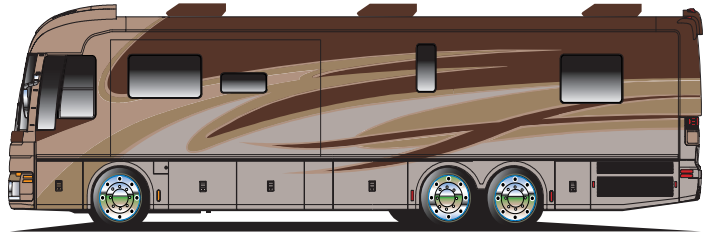
I T ' S T I M E T O C R E A T E A

The scenery just keeps getting better with American Eagle's new exterior color choices.

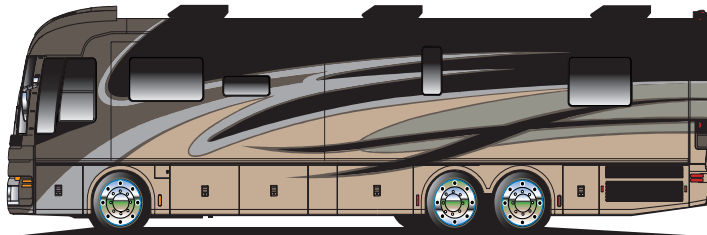
Cobalt Frost



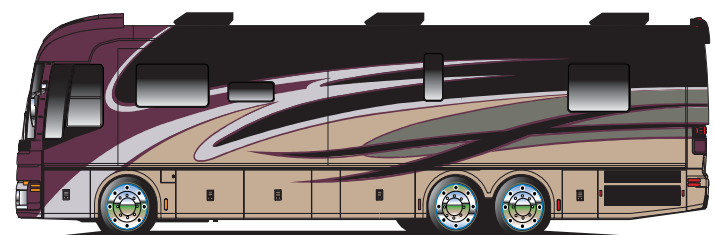
Gold Dusted Ivory



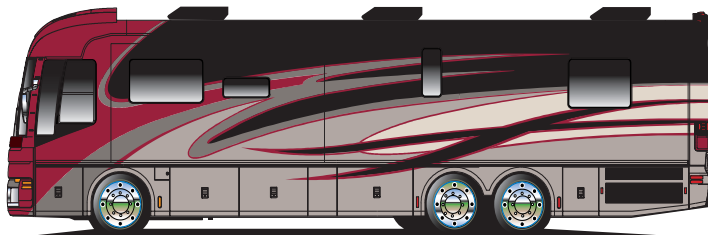
Matrix



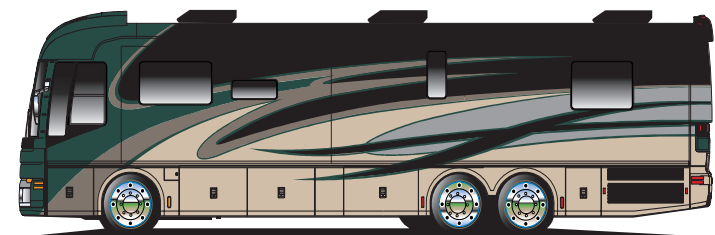
Debonair



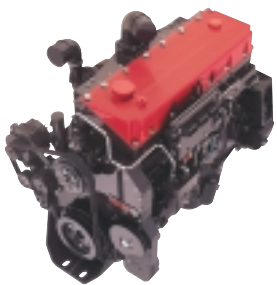
Midnight Harmony



Sage Harmony

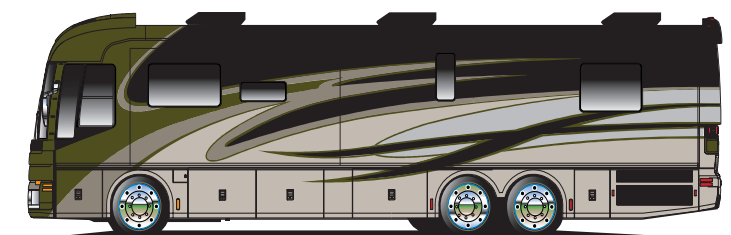


BEAUTY & POWER GO HAND-IN-HAND



Need a little reassurance for your Rocky Mountain ramblings? Tackle the high country with this fully electronic Cummins® 400 hp ISL diesel engine in all 40' models or a 500 hp ISM in all 42' models. It delivers state-of-the-art diagnostics, improved fuel economy, reduced emissions, a quieter ride, more miles between service stops, and the highest power-to-weight ratio in its class.

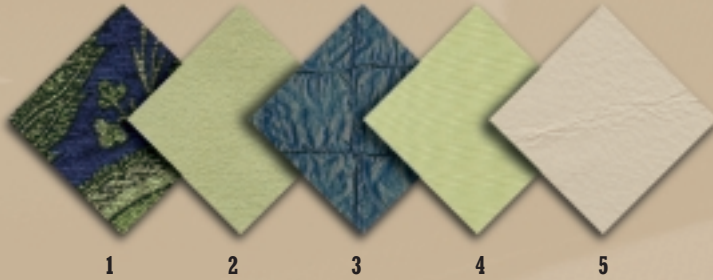
Veranda



C O L O R F U L N E W W O R L D .

You can now create a variety of American Eagle decors by mixing and matching interior decors with exterior graphics.

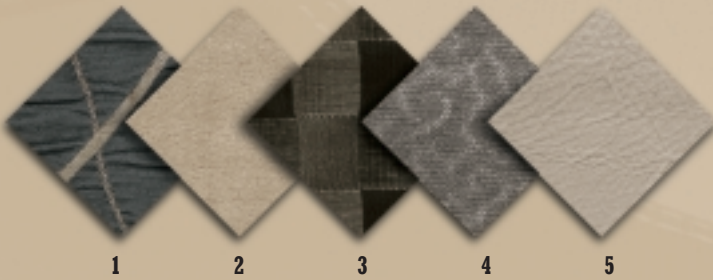
Cobalt Frost



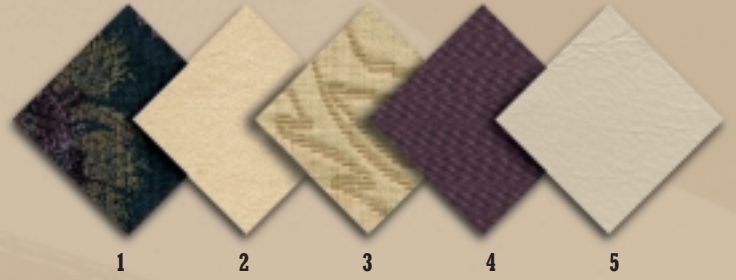
Gold Dusted Ivory



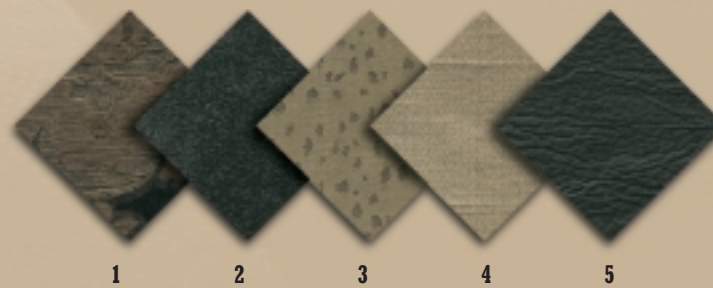
Matrix



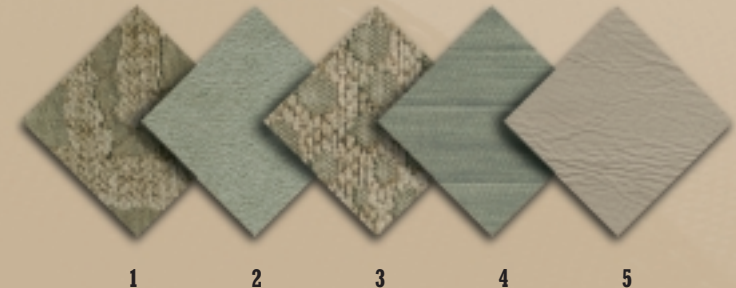
Debonair



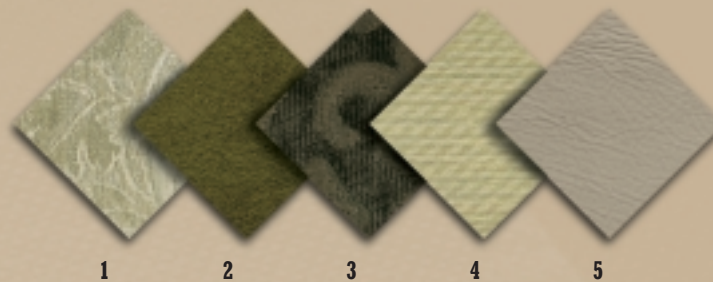
Midnight Harmony



Sage Harmony



Veranda



Fabrics

- 1 LIVING ROOM FEATURE
- 2 UPHOLSTERY
- 3 BEDROOM FEATURE
- 4 DRAPERY
- 5 LEATHER

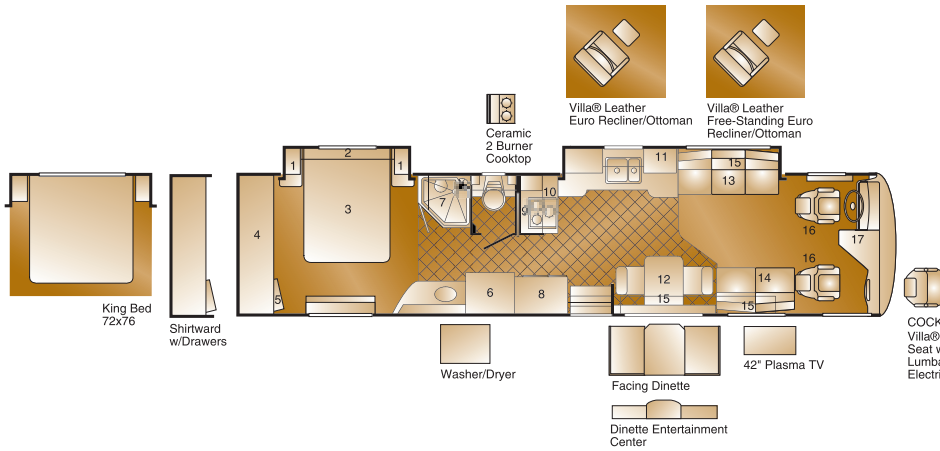
See your dealer for available wood and fabric combinations.



- 1 ANDERSON WALNUT
- 2 CLEAR WHITE MAPLE
- 3 REGENCY CHERRY
- 4 ALPINE OAK

A M E R I C A N E A G L E F L O O R P L A N S

40-G



1. Nightstand w/Overhead
2. Speaker Soffit w/Lighting
3. Queen Bed 60" x 80" Slide-out
4. Rear Wardrobe
5. 20" Rear TV
6. Linen w/Hamper Rollouts
7. Shower
8. Norcold® 4-Door Fridge w/Ice-Maker
9. Microwave
10. 3 Burner w/Oven
11. Galley Overhead
12. Dinette w/Wall Unit w/Villa® Fabric Chairs
13. Villa® Leather Sofa Bed
14. Villa® Leather Love Seat
15. Overhead Storage
16. Villa® Leather Driver/Passenger Seats w/Power Lumbar/Heat and Electric Footrest
17. 24" Front TV in Overhead

COCKPIT OPTIONS
Villa® Leather Queen Seat w/Power Lumbar/Heat/Electric Footrest

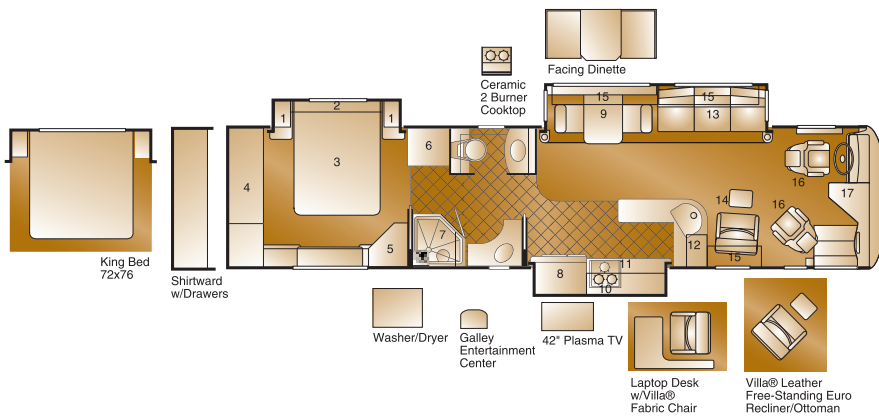
40-W

1. Nightstand w/Overhead
2. Speaker Soffit w/Lighting
3. Queen Bed 60" x 80" Slide-out
4. Rear Wardrobe
5. 20" Rear TV
6. Shower
7. Norcold® 4-Door Fridge w/Ice-Maker
8. Pantry
9. Microwave
10. 3 Burner w/Oven
11. Dinette w/Wall Unit w/Villa® Fabric Chairs
12. Galley Overhead
13. Villa® Leather Sofa Bed
14. Villa® Leather J-Love Seat
15. Overhead Storage
16. Villa® Leather Driver/Passenger Seats w/Power Lumbar/Heat and Passenger Seat w/Electric Footrest
17. 24" Front TV in Overhead



COCKPIT OPTIONS
Villa® Leather Queen Seat w/Power Lumbar/Heat/Electric Footrest

40-T

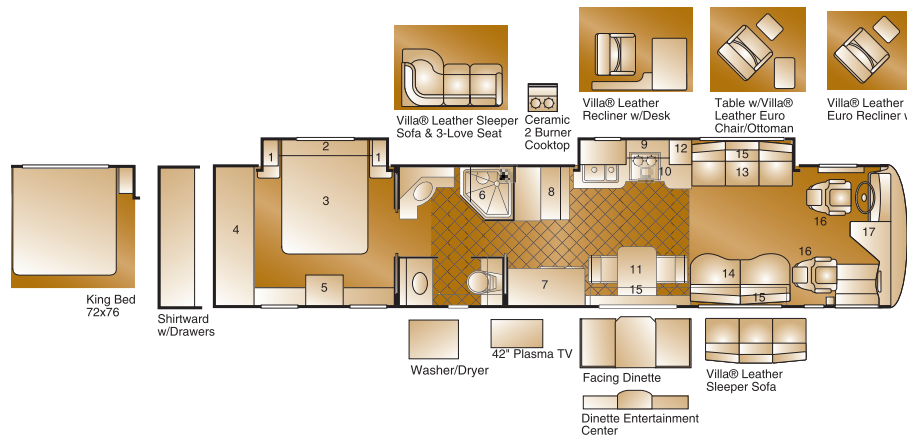


COCKPIT OPTIONS
Villa® Leather Queen Seat w/Power Lumbar/Heat/Electric Footrest

1. Nightstand w/Overhead
2. Speaker Soffit w/Lighting
3. Queen Bed 60" x 80" Slide-out
4. Rear Wardrobe
5. 20" Rear TV
6. Linen Cabinet
7. Shower
8. Norcold® 4-Door Fridge w/Ice-Maker
9. Dinette w/Wall Unit w/Villa® Fabric Chairs
10. Microwave
11. 3 Burner w/Oven
12. Galley Overhead
13. Villa® Leather Sofa Bed
14. Villa® Leather Recliner w/Ottoman
15. Overhead Storage
16. Villa® Leather Driver/Passenger Seats w/Power Lumbar/Heat and Passenger Seat w/Electric Footrest
17. 24" Front TV in Overhead

42-E

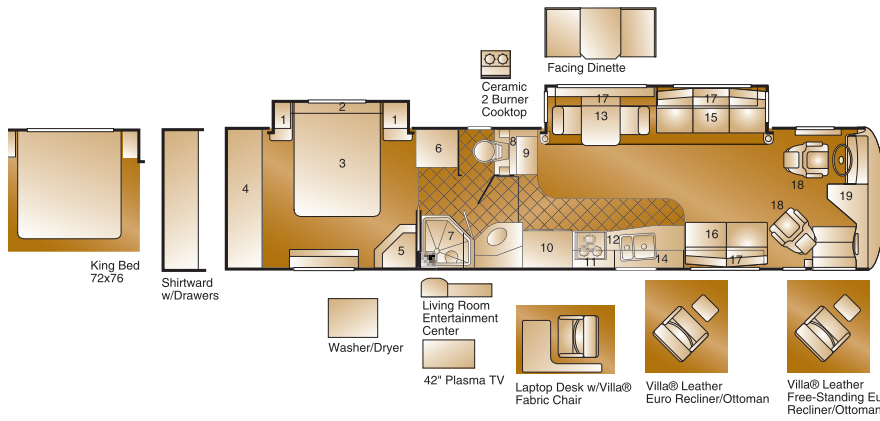
1. Nightstand w/Overhead
2. Speaker Soffit w/Lighting
3. Queen Bed 60" x 80" Slide-out
4. Rear Wardrobe
5. 20" Rear TV
6. Shower
7. Norcold® 4-Door Fridge w/Ice-Maker
8. Pantry w/Pullout Base
9. Microwave
10. 3 Burner w/Oven
11. Dinette w/Wall Unit w/Villa® Fabric Chairs
12. Galley Overhead
13. Villa® Leather Sofa Bed
14. Villa® Leather Love Seat
15. Overhead Storage
16. Villa® Leather Driver/Passenger Seats w/Power Lumbar/Heat and Passenger Seat w/Electric Footrest
17. 24" Front TV in Overhead



COCKPIT OPTIONS
Villa® Leather Queen Seat w/Power Lumbar/Heat/Electric Footrest

A M E R I C A N E A G L E F L O O R P L A N S

40-M



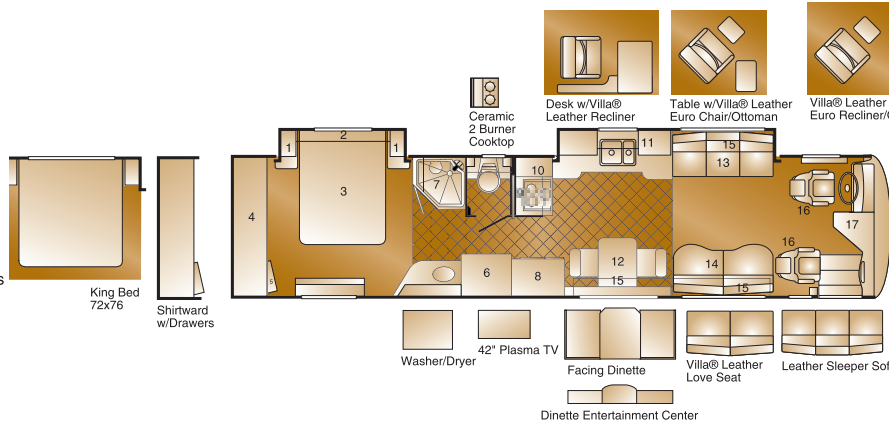
1. Nightstand w/Overhead
2. Speaker Soffit w/Lighting
3. Queen Bed 60" x 80" Slide-out
4. Rear Wardrobe
5. 20" Rear TV
6. Linen w/1 Drawer Upper Storage
7. Shower
8. Bath Linen Cabinet
9. Pantry
10. Norcold® 4-Door Fridge w/Ice-Maker
11. Microwave
12. 3 Burner w/Oven
13. Dinette w/Wall Unit w/Villa® Fabric Chairs
14. Galley Overhead
15. Villa® Leather Sofa Bed
16. Villa® Leather Love Seat
17. Overhead Storage
18. Villa® Leather Driver/Passenger Seats w/Power Lumbar/Heat and Passenger Seat w/Electric Footrest
19. 24" Front TV in Overhead

COCKPIT OPTIONS
Villa® Leather Queen Seat w/Power Lumbar/Heat/ Electric Footrest

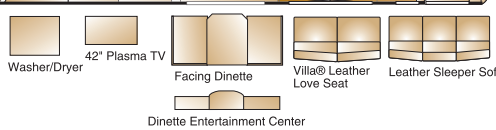


40-Q

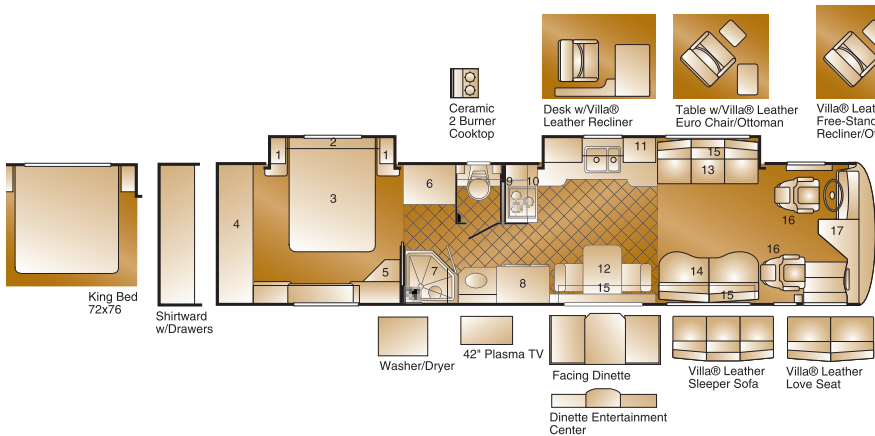
1. Nightstand w/Overhead
2. Speaker Soffit w/Lighting
3. Queen Bed 60" x 80" Slide-out
4. Rear Wardrobe
5. 20" Rear TV
6. Linen w/Hamper Rollouts
7. Shower
8. Norcold® 4-Door Fridge w/Ice-Maker
9. Microwave
10. 3 Burner w/Oven
11. Galley Overhead
12. Dinette w/Wall Unit w/Villa® Fabric Chairs
13. Villa® Leather Sofa Bed
14. Villa® Leather J-Love Seat
15. Overhead Storage
16. Villa® Leather Driver/Passenger Seats w/Power Lumbar/Heat and Passenger Seat w/Electric Footrest
17. 24" Front TV in Overhead



COCKPIT OPTIONS
Villa® Leather Queen Seat w/Power Lumbar/Heat/ Electric Footrest

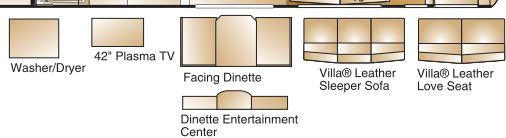


40-U



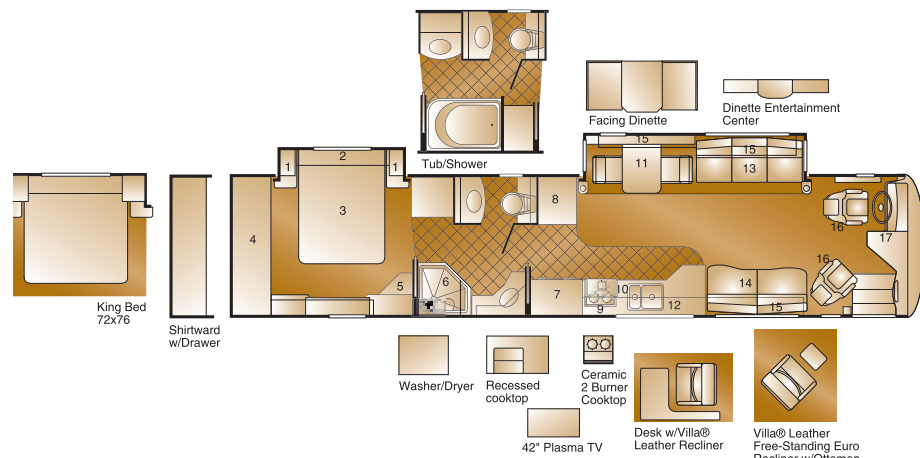
1. Nightstand w/Overhead
2. Speaker Soffit w/Lighting
3. Queen Bed 60" x 80" Slide-out
4. Rear Wardrobe
5. 20" Rear TV
6. Linen
7. Shower
8. Norcold® 4-Door Fridge w/Ice-Maker
9. Microwave
10. 3 Burner w/Oven
11. Galley Overhead
12. Dinette w/Wall Unit w/Villa® Fabric Chairs
13. Villa® Leather Sofa Bed
14. Villa® Leather J-Love Seat
15. Overhead Storage
16. Villa® Leather Driver/Passenger Seats w/Power Lumbar/Heat and Passenger Seat w/Electric Footrest
17. 24" Front TV in Overhead

COCKPIT OPTIONS
Villa® Leather Queen Seat w/Power Lumbar/Heat/ Electric Footrest



42-F

1. Nightstand w/Overhead
2. Speaker Soffit w/Lighting
3. Queen Bed 60" x 80" Slide-out
4. Rear Wardrobe
5. 20" Rear TV
6. Shower
7. Norcold® 4-Door Fridge w/Ice-Maker
8. China Cabinet
9. Microwave
10. 3 Burner w/Oven
11. Dinette w/Villa® Fabric Chairs
12. Galley Overhead
13. Villa® Leather Sofa Bed
14. Villa® Leather Love Seat
15. Overhead Storage
16. Villa® Leather Driver/Passenger Seats w/Power Lumbar/Heat and Passenger Seat w/Electric Footrest
17. 24" Front TV in Overhead



COCKPIT OPTIONS
Villa® Leather Queen Seat w/Power Lumbar/Heat/ Electric Footrest



S T A N D A R D & O P T I O N A L F E A T U R E S

Automotive

- S Engine - Cummins® 8.9 Liter, 400 hp ISL Diesel
- S Engine - Cummins®, 11.0 Liter, 500 hp ISM Diesel (42' E & F Model only)
- S Engine Brake Hi/Lo (42' E & F Model only)
- S Jacobs Engine Compression Brake
- S Transmission - Allison® 3000 MH, 6-Speed Automatic
- S Spartan® Mountain Master GT Chassis
- S Independent Front Suspension
- S Air Ride Suspension w/Bilstein® Shocks
- S Undercoating
- S Auxiliary Fog Lamps
- S (4) Cast Aluminum Wheels
- S Anti-Lock Braking System (ABS)
- S Full Air Brakes w/Automatic Slack Adjusters
- S Michelin® Radial Tires
- S Tire Pressure Check Gauge
- S 3-Point Semi-Automatic Leveling Jacks
- S Denso Climate Control System
- S Power Driver Window
- S Intermittent Wipers (Single Motor)
- S Rear Vision System with Audio
- S Visteon AM/FM & CD
- S Chrome "Bus-Like" Heated Mirrors w/Remote Adjustment and Turn Signal Indicators
- S Bus Style 50" Large Windshield
- S Battery Disconnects
- S Trailer Hitch Receiver 10,000 Lb. Capacity*
- S Cruise Control
- S Air Horns
- S I.C.C. Light Switch
- S Driver/Passenger Map Lights
- S Smart Wheel
- S Corian® Drink Holder
- S CB Radio Ready
- S (2) Auxiliary 12V Dash Receptacles
- S Electronic Battery Control Center
- S Tilt/Telescope Steering Wheel
- S Utility Light, Front & Rear
- S Tinted Acrylic Sun Visors
- S Driver Side Pull Down Shade
- S Sound Insulation in Subfloors, Front & Rear
- S Steel Surface on Front Bulkhead/Engine Frame
- S Pneumatic Stepwell Cover
- S Back Lighted Instrument Panel
- S Remote Auxiliary Start System
- S (4) 6V House Batteries on Slide-Out Tray, 440 Amp
- S (2) 12V Chassis Batteries - 2000 CCA
- S Villa® Leather 6-Way Power Driver Seat w/Heat/Power Lumbar
- S Villa® Leather 6-Way Power Passenger Seat w/Heat/Power Lumbar/Electric Footrest
- S Manual Air Dump Override Switch
- S Adjustable Pedals
- O Villa® Leather 6-Way Power Passenger Queen Seat w/Heat/Power Lumbar & Power Footrest
- O Hand-Held CB Radio
- O XM Satellite Radio
- O V.I.P. Delivery
- O GPS System
- O Spartan Chassis w/IFS Suspension
- O Road Relay System
- O Night Vision
- O Trip Tek
- O Power Sunvisors

Structural

- S Stacked Rail Chassis Frame
- S Steel Reinforced Vacubond Sidewall, Roof & Floor Construction
- S Steel Outriggers on Chassis
- S Heated Water & Holding Tank Compartments
- S Vacubond Insulated Storage Area
- S Bonded Windshield w/Frame

Exterior

- S 50' Air Service Line
- S Detachable 50 Amp Power Cord
- S Full Fiberglass Front & Rear Caps
- S One-Piece Domed Fiberglass Roof
- S Gelcoat Fiberglass Exterior Side-Walls
- S Polished Stainless Steel Bumpers-Front & Rear
- S Hydraulic Genset Slide-Out
- S Power Entry Single Step
- S 31" Front Entry Door with Dead Bolt & Pneumatic (Air) Lock
- S Keyless Entry Door
- S Entry Screen Door
- S Front Fiberglass Fascia Slide-Out
- S Dual Holding Tank San-T-Flush System (7) Exterior Graphics
- S Dual Pane Windows with Screens
- S Awning/Drip Rail Moldings RS/DS
- S Color coded Awnings & Awning Arms
- S Mud Flaps - Front & Rear
- S Protective Front Cover w/Logo
- S Stainless Steel Kickplate Under Entry Door
- S Exterior Rinse Hose with Soap Dispenser & Paper Towel Holder
- S Deluxe Lighted Entry Handle w/Logo
- S Luggage Compartment Lights
- S Docking Lights - 2 Each Front & Rear
- S Porch Lights (2)
- S Porch Light (1) (G Model only)
- S Tank Level Monitor
- S Fiberglass Front Quarter Panels/Wheel Trims
- S Exterior Convenience Light at Dump Valves
- S Exterior Storage Doors w/Pantograph Hinges
- S Water Pump Switch
- S Holding Tanks w/Low Point Drain Valves
- S One 54" Slide-Out Storage Tray
- S Fresh Water Hose
- S Fresh Water Gravity Fill
- S Floor Mounted LPG Tank, 40 Gallon
- S Two-Piece Rear Ladder
- S 12' DS Awning (Not Available on 40 T)
- S Entry Door Awning (Not Available on 40 G)
- S Electric Care Free Padio Awning (Not Available on 40 T)
- S 20' Padio Care Free Padio Manual Awning w/Logo (40 T Only)
- S Window Awnings
- O Girard Electric Awning (Not Available on 40 T)
- O Additional 54" Slide-Out Storage Tray
- O 36" Slide-Out Storage Tray
- O 54" Slide-Out Storage Tray
- O 90" Pass Through Storage Tray
- O Power Luggage Door Unlock
- O Exterior Entertainment Center w/TV on Swivel Tray
- O 3M® Film Front Mask
- O Rear Rockguard Mud Flap
- O Summit Body Block
- O Spot Light
- O Night Vision w/3M Mask

Appliances

- S Onan® 7.5 kw Quiet Diesel Generator w/Power Slide-Out
- S Onan® 10 kw Quiet Diesel Generator w/Power Slide-Out (42' E & F Models only)
- S Norcold® 120V/LPG 4 Door Refrigerator w/Ice Maker
- S Automatic Generator Start Switch
- S Recessed 3 Burner Range with Oven
- S Microwave/Convection Oven with Built-in Range Hood with Light/Fan
- S Water Filter
- S 24" Sony® Vega TV (Front) with Remote
- S 20" Sony® Vega TV (Rear) with Remote
- S Sony® VHS - 4 Head Hi-Fi Stereo VCR
- S Digital Satellite System w/Tracvision
- S Sony® Home Theater System
- S Trace RV Series 2500 Watt Continuous Inverter, 130 Amp Converter
- S Heart Battery Monitor
- S Multi-Point Water Pump Switching
- S Residential China Bowl Flush Toilet
- S D.S.I. 10 Gallon Water Heater 120V/LPG
- S LPG Leak Detector/Alarm
- S Carbon Monoxide Detector/Alarm
- S Smoke Detector/Alarm
- S Fire Extinguisher
- S Solar Charging Panel
- S (2) 13.5 M Low Profile Roof Air Conditioners
- S (3) 13.5 M Low Profile Roof Air Conditioners (42' E & F Model only)
- S Dual Furnaces with Thermostat & Auto Ignition - 34,000 BTU (Each)
- S Park Telephone Ready
- S Rigid Furnace Ducting System
- S Patio Receptacles
- S Energy Management System
- O Washer/Dryer (Vented)
- O Recessed Kitchen Aid® 2-Burner Range Cooktop (Not Available in T Model)
- O Norcold® 12V/120V Chest Freezer (Not Available in T Model)
- O CD Changer
- O Plasma TV 42" - SONY®
- O Power TV Antenna w/Warning Light
- O Hydronic® Heating System
- O Central Vacuum System
- O Low Profile AC w/Heat Pump
- O "In Motion" DSS System w/SONY® Receiver
- S Silverware Tray
- S Corian® Dinette Table with Extension & 4 Chairs
- S Corian® Galley Top & Sink Covers
- S Large single Corian Bowl Galley Sink (T Model only)
- S Stainless Steel Large Double Bowl Galley Sink (Not Available in T Model)
- S Moen® One Touch Galley Faucet
- S Solid Wood Refrigerator Door Inserts
- S Wood Drawers with Dovetail Joints
- S Corian® Range Cover
- S 120V Outlet & Telephone Jack at Dinette
- S Polished Porcelain Tile Floor (Diagonally Laid)
- S Dinette Base Cabinet
- O Nuheat Heated Tile Floor

Bath

- S Skylight in Shower
- S Brass & Chrome Bath Accessories
- S Corian® Lavy Top with Corian® Sink & Moen® Faucet
- S Deluxe Medicine Cabinet
- S Deluxe Fiberglass Shower Enclosure w/Fold Down Seat
- S Corian® Decorative Shower Caddy
- S Glass/Brite Brass Shower Doors w/Positive Latch
- S Moen Hand Held Shower Head
- S Polished Porcelain Tile Floor (Diagonally Laid)
- O Obscure Glass in Shower
- O Nuheat Heated Tile Floor

Bedroom

- S Restonic Inner Spring Mattress 60" x 80"
- S Key Locked Safe
- S Day/Night Pleated Shades
- S Three Decor Throw Pillows
- S Hand Laid Wallpaper w/Decorative Border
- S Solid Wood Raised Panel Bath/Bedroom Doors
- S Secondary Phone Jack
- S 120V/12V AC/DC Central Electrical Panel
- S Corian® Nightstand Tops
- S Comforter & Reversible Coverlet
- S Fabric Decor Headboard (Not Available on 42' E & F Models)
- O Ceiling Fan 12 V
- O Shirt Wards with Drawers
- O King Bed

Interior

- S Micro Mini-Blinds in Living Area
- S 12V Halogen Lighting System
- S Dimmer Switch in Living and Bedroom Areas
- S Interior Multi Plexed Switches
- S Rain Sensor Power Roof Vents w/3-Speed Fan
- S Entry Step Switch at Entry Wall
- S Two Decorative Sofa Pillows
- S Night Floor Lighting
- S Indirect Lighting - Bedroom and Living Area
- S Skylight Cover (Q & G Models Only)
- S TV Cable Ready
- S Vinyl Padded Ceiling w/Air Plenum and Indirect Lighting
- S Lambrequin Window Treatments
- S Alpine Oak, Walnut, Cherry or Clear White Maple (Select Interiors Only) Cabinetry
- S Wood TV Overhead
- S TV Antenna with 2 Jacks Included
- S Non-Skid Cabinet Shelves
- S Front Windshield Privacy Curtain
- S Cedar-Lined Wardrobe
- S Wardrobe Light
- S Beveled Glass Mirrors
- S Solid Core Raised Panel Cabinet Doors
- S Deluxe Drawer Guides with Travel Locks
- S Villa® Leather Sleeper Sofa w/Drawer
- S Villa® Leather Love Seat w/2 Drawers (Q,U,W,E)
- S Villa® Leather Love Seat w/Drawer (G,M)
- S Villa® Leather Recliner w/Ottoman (T)
- O Inlaid Carpet - Living Area
- O Day/Night Pleated Shades

Galley

- S Silverware Tray
- S Corian® Dinette Table with Extension & 4 Chairs
- S Corian® Galley Top & Sink Covers
- S Large single Corian Bowl Galley Sink (T Model only)
- S Stainless Steel Large Double Bowl Galley Sink (Not Available in T Model)
- S Moen® One Touch Galley Faucet
- S Solid Wood Refrigerator Door Inserts
- S Wood Drawers with Dovetail Joints
- S Corian® Range Cover
- S 120V Outlet & Telephone Jack at Dinette
- S Polished Porcelain Tile Floor (Diagonally Laid)
- S Dinette Base Cabinet
- O Nuheat Heated Tile Floor

*The chassis manufacturer recommends the installation of a supplemental brake control system to activate the brakes on the vehicle or trailer you are towing.

D I M E N S I O N S & C A P A C I T I E S

Weights (pounds)

	40-G	40-W	40-T	40-M	40-Q	40-U	42-E	42-F
GVWR (lbs.)(1)	33,700	33,700	33,700	33,700	33,700	33,700	43,700	43,700
Front GAWR (lbs.)(2)	13,700	13,700	13,700	13,700	13,700	13,700	14,200	14,200
Rear GAWR (lbs.)(2)	20,000	20,000	20,000	20,000	20,000	20,000	30,000	30,000
Base Weight (lbs.)(3)	28,550	28,800	29,300	28,850	28,600	28,700	32,050	32,050
GCWR (lbs.)(4)	43,700	43,700	43,700	43,700	43,700	43,700	53,700	53,700
Hitch Rating Weight (lbs.)*	10,000	10,000	10,000	10,000	10,000	10,000	10,000	10,000
Tongue Weight (lbs.)*	1,000	1,000	1,000	1,000	1,000	1,000	1,000	1,000

Measurements

	40-G	40-W	40-T	40-M	40-Q	40-U	42-E	42-F
Wheel Base	266"	266"	266"	266"	266"	266"	290"	290"
Overall Length (5)	40'	40'	40'	40'	40'	40'	42'	42'
Overall Height w/AC	12' 5.5"	12' 5.5"	12' 5.5"	12' 5.5"	12' 5.5"	12' 5.5"	12' 5.5"	12' 5.5"
Overall Width (max) (6)	101.5"	101.5"	101.5"	101.5"	101.5"	101.5"	101.5"	101.5"
Interior Height (max)	82"	82"	82"	82"	82"	82"	82"	82"
Interior Width (max)	96"	96"	96"	96"	96"	96"	96"	96"

Tank & Liquid Capacities (gallons)

	40-G	40-W	40-T	40-M	40-Q	40-U	42-E	42-F
Fresh Water Holding Tank (gal.)	95	95	95	95	95	95	95	95
Grey Water Holding Tank (gal.)	60	60	60	60	60	60	60	60
Black Water Holding Tank (gal.)	40	40	40	40	40	40	40	40
Appliance LPG Tank (WC) (7)	40.3	40.3	40.3	40.3	40.3	40.3	40.3	40.3
Water Heater Tank (gal.)	10	10	10	10	10	10	10	10
Fuel Capacity (gal.)	150	150	150	150	150	150	150	150

Liquid Weight Reference: Water (gal./ltrs.)=(8.3 lbs./3.8 kgs.), Fuel (gal./ltrs.)=(7.1 lbs./3.2 kgs.), LPG (gal./ltrs.)=(4.2 lbs./1.9 kgs.)
Metric Conversion: Multiply pounds x 0.453 to obtain kilograms, Multiply gallons x 3.785 to obtain liters

Chassis

Frame	Spartan® Mountain Master GT Stacked Rail
Engine	Cummins® C.8.9/400 hp ISL Diesel (42 E & F 11.0/500 hp ISM Diesel)
Torque	1200 @ 1300 RPM
Transmission	Allison® 3000 MH, 6-Speed w/Electronic Shifter
Alternator Amps	200 Amp Leece Neville
Tires	295/80 R22.5LRH Low Profile Highway Radial

- (1) GVWR (Gross Vehicle Weight Rating): Means the maximum permissible loading weight of the motor home. GVWR is equal to or greater than the sum of the unloaded vehicle weight plus the net carrying capacity.
- (2) GAWR (Gross Axle Weight Rating): Means the maximum permissible loaded weight a specific axle is designed to carry.
- (3) BW (Base Weight): Means the weight of the motor home without fuel, options, water, cargo or passengers.
- (4) GCWR (Gross Combined Weight Rating): Means the value specified by the motor home manufacturer as the maximum allowable loaded weight of this motor home with its towed vehicle. Towing and braking capacity may differ. Refer to Fleetwood and chassis manufacturer manuals for complete information.
- (5) Length taken from front bumper to rear bumper (excludes accessories).
- (6) Excludes safety equipment and awnings.
- (7) Tank Manufacturer's listed water capacity (WC). Actual LPG capacity is 80% of water listed as required by the safety code.

*The chassis manufacturer recommends the installation of a supplemental brake control system to activate the brakes on the vehicle or trailer you are towing.

IMPORTANT-PLEASE READ: Product information, photography and illustrations included in this publication were as accurate as possible at the time of printing. For further product information and changes, please visit our website at www.fleetwoodrv.com or contact your local Fleetwood dealer. Prices, materials, design and specifications are subject to change without notice. All weights, fuel, liquid capacities and dimensions are approximate. Fleetwood has designed its recreational vehicles to provide a variety of uses for its customers. Each vehicle features optimal seating, sleeping, storage and fluid capacities. The user is responsible for selecting the proper combination of loads (i.e. occupants, equipment, fluids, cargo, etc.) to ensure that the vehicle's capacities are not exceeded.

SEE AMERICA FROM A DIFFERENT *Point of View.*



We believe the trip is always a little more meaningful when you travel our country in an American Coach. Because you're riding in a motorhome that was built by pride-filled Americans... for Americans. Americans who cherish the freedoms that have made this country the greatest country in the world. And, like you, we're prepared to keep those freedoms intact.

Our optional VIP Delivery Service takes place right here in the heartland at our factory in Decatur, Indiana. We'll do everything in our power to make you feel like part of our family the minute you take possession of your American Coach. It's an ideal opportunity to learn everything about your new vehicle firsthand from the

very people who proudly designed and built it.

Not only will you drive away with a Fleetwood 1 year/3 year RV Ownercare service and warranty card, you'll drive away with peace of mind, knowing you can rely on us wherever you are in the country, for roadside assistance, service and answers to any question you may have.

As an American Coach owner, you're automatically eligible to become a member of three active and fun-loving owner groups. The American Coach Association, American Coach chapter of FMCA and Club Fleetwood... great people who love to travel and party at beautiful resorts and vacation spots all across America.

American
COACH

Come Visit us in Decatur, Indiana and take our plant tour. Call (800) 648-6582 for tour hours.
Fleetwood Motorhomes of Indiana, Inc. • Plant #44 • 1031 U.S. 224 East • Decatur, Indiana 46733-5006 • (260) 728-2121 (800) 648-6582

FLEETWOOD RV™
www.fleetwoodrv.com