

Flair®

FLEETWOOD RV™

GRAB HOLD OF LIFE.

In the Flair® motor home, your family will find an exciting traveling companion for exploring all that life on the road has to offer. It has lots of space, style and solid value that's unsurpassed in its price range.

Agile enough to go where the fun is, the Power Platform II chassis easily carries this wide-body motor home for a quiet, and nearly flawless ride. The steel-truss design also allows for pass-through storage so you can bring along more fun. And you're pre-wired to tow whether you choose a Workhorse® chassis with a 3500 lb. hitch rating or the Ford® with a 5000 lb.

hitch rating. Flair has the strength and power to bring along your dirt bikes, ATVs or watercraft.*

Three beautifully engineered floor plans feature a flat inner ceiling which maximizes Flair's interior headroom, not to mention its practicality, providing space for full-size dishes and personal belongings.

With an RV like this, it's no wonder that Fleetwood RV has so many motor homes on the road today. Flair. Everything's set for your life on the go.



* The chassis manufacturer recommends the installation of a supplemental brake control system to activate the brakes on the vehicle or trailer you are towing.

Our engineering may set us apart from the rest, but the things you'll notice most when you and your family take a trip, are the top-of-the-line features. Here are but a few of the items that make life on the road with Flair memorable.



Convenient passenger-side storage rack holds magazines or books.



Flair's solid wood, spacious passenger overhead storage shelves measure from 30" to 37-7/8" wide and 7-1/2" to 7-7/8" deep.



An optional electronic climate control system, with dual A/C controls, enables a separate climate in the front and rear of the coach.



Every Flair comes prewired for an optional Winegard® satellite dish.



Fill Flair up on either side of the pump with a rear fuel-fill location, especially convenient when towing a vehicle.

Carpeted storage compartments are non-corrosive to prevent rusting.

A coach-length, aluminum drip rail prevents discoloring of the sidewall.

Practical, single die-cast metal paddle latches are flush-mounted for a luggage door system that's durable and easy-to-operate.

Anti-wicking process, on all of Flair's openings and windows, includes multiple seals for prevention of leaks and moisture buildup.

Our swing-down engine access door makes it easy to check Flair's fluid levels and electrical panel.



Flair's standard 4.0kW ultra-quiet Onan® generator provides 110V service and comes with a 3-year warranty. (Optional 5.5 kW generator shown.)



Uniquely suited to your needs on the road, integrated bedroom cabinetry features large dresser, optional TV, hamper and vanity.



Open the smooth, one-piece aluminum skin storage doors and take advantage of over 35-cubic feet of EZ-Store storage space.



SPECIFICATIONS

FORD® CHASSIS	30H	31A	33R
Engine LD	6.8L	6.8L	6.8L
Wheelbase	190"	208"	208"
GVWR lbs (1)	18,000	20,500	20,500
Front GAWR (lbs) (2)	7,000	7,000	7,000
Rear GAWR (lbs) (2)	11,000	13,500	13,500
Base Weight (lbs) (3)	14,300	15,370	15,180
GCWR (lbs) (4)	23,000	25,500	25,500
Hitch Rating (lbs)*	5,000	5,000	5,000
Tongue Weight (lbs)*	500	500	500
Fuel Capacity (gal)	75	75	75
WORKHORSE® CHASSIS	30H	31A	33R
Engine LD	8.1L	N/A	N/A
Wheelbase	190"	N/A	N/A
GVWR (lbs) (1)	17,000	N/A	N/A
Front GAWR (lbs) (2)	6,000	N/A	N/A
Rear GAWR (lbs) (2)	11,000	N/A	N/A
Base Weight (lbs) (3)	13,090	N/A	N/A
GCWR (lbs) (4)	20,500	N/A	N/A
Hitch Rating (lbs)*	3,500	N/A	N/A
Tongue Weight (lbs)*	350	N/A	N/A
Fuel Capacity (gal)	75	N/A	N/A
DIMENSIONS	30H	31A	33R
Length (5)	31' 6"	32' 0"	34' 0"
Height (with A/C)	11' 10"	11' 10"	11' 10"
Width (maximum) (6)	102"	102"	102"
Interior Height (maximum)	79"	79"	79"
Interior Width (maximum)	96"	96"	96"
LIQUID CAPACITIES (GALLONS)	30H	31A	33R
Fresh Water Holding Tank (gal)	75	75	80
Grey Water Holding Tank (gal)	46	65	50
Black Water Holding Tank (gal)	50	50	50
Appliance LPG Tank (gal) (WC) (7)	25	25	25
Water Heater Tank (gal)	6	6	6
Liquid Weight Reference	Water (gal/ltrs) = (8.3 lbs/3.8 kgs)	Fuel (gal/ltrs) = (6.1 lbs/2.8 kgs)	LPG (gal/ltrs) = (4.5 lbs/2.0kgs)
Metric Conversion	Multiply pounds x 0.453 to obtain kilograms		Multiply gallons x 3.785 to obtain liters

1. GVWR (Gross Vehicle Weight Rating): Means the maximum permissible loaded weight of the motor home. The GVWR is equal to or greater than the sum of the unloaded vehicle weight plus the net carrying capacity.
2. GAWR (Gross Axle Weight Rating): Means the maximum permissible loaded weight a specific axle is designed to carry.
3. BW (Base Weight): Means the estimated weight of the motor home without fuel, options, water, cargo or passengers.
4. GCWR (Gross Combined Weight Rating): Means the value specified by the motor home manufacturer as the maximum allowable loaded weight of this motor home with its towed vehicle. Towing and braking capacities may differ. Refer to Fleetwood and chassis manufacturer manuals for complete information.

5. Length taken from front bumper to rear bumper (excludes accessories).
 6. Excludes safety equipment and awnings.
 7. Tank Manufacturer's listed water capacity (WC). Actual LPG capacity is 80% of water listing as required by the safety code.
 8. Add 4" for Workhorse® chassis.
- N/A: Not available for this model.

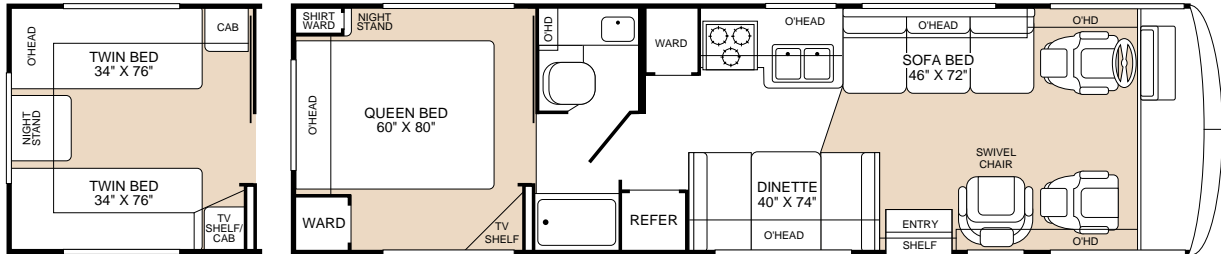
* The chassis manufacturer recommends the installation of a supplemental brake control system to activate the brakes on the vehicle or trailer you are towing.

IMPORTANT—PLEASE READ: Product information, photography and illustrations included in this publication were as accurate as possible at the time of printing. For further product information and changes, please visit our website at www.fleetwoodrv.com or contact your local Fleetwood dealer. Prices, materials, design and specifications are subject to change without notice. All weights, fuel, liquid capacities and dimensions are approximate. Fleetwood has designed its recreational vehicles to provide a variety of uses for its customers. Each vehicle features optimal seating, sleeping, storage and fluid capacities. The user is responsible for selecting the proper combination of loads (i.e. occupants, equipment, fluids, cargo, etc.) to ensure that the vehicle's capacities are not exceeded.

MODEL

30H

- Island Queen Bed
- Split Bathroom
- Sofa Bed
- Optional Twin Beds
- Dinette
- Swivel Chair

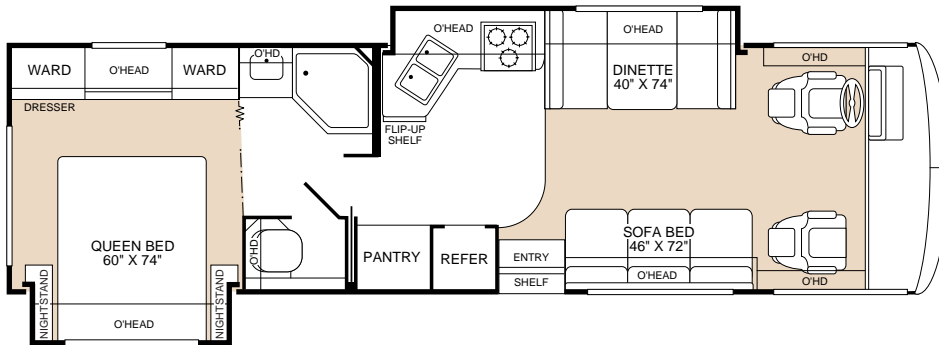


OPT. 835

MODEL

31A

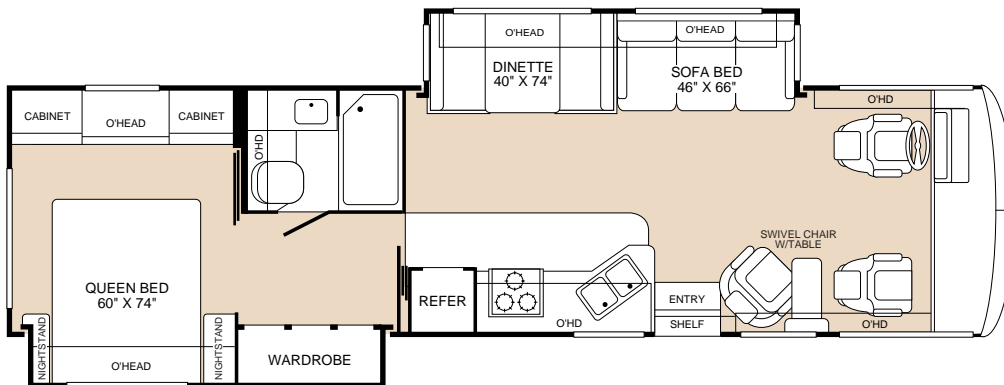
- Bedroom Slide-Out with Island Queen Bed
- Spacious Pantry
- Galley/Dinette Slide-Out
- Bedroom Feature Cabinets with Dresser and Integrated Vanity
- Private Toilet
- Sofa Bed



MODEL

33R

- Bedroom/Wardrobe Double-Length Slide-Out with Mirrored Doors and Large Drawers
- Fully Enclosed Bathroom with Tub/Shower
- Living Room Slide-Out with Sofa Bed and Dinette
- Bedroom Feature Cabinets with Integrated Vanity
- Swivel Chair with Table



OPTIONS

FLEETWOOD RV™

APPLIANCES	30H	31A	33R
Fan-Tastic® Power Roof Vent	OPT	OPT	OPT
8-cu. ft. Dometic® Double-Door Refrigerator–AC/Gas	OPT	OPT	OPT
Compact Disc Player	OPT	OPT	OPT
Panasonic® VCR/VHS	OPT	OPT	OPT
Winegard® Satellite Dish	OPT	OPT	OPT
ELECTRICAL	30H	31A	33R
Electronic Climate Control w/Dual A/C w/5.5kW Generator Upgrade*	OPT	OPT	OPT
EXTERIOR	30H	31A	33R
Awning - USA	OPT	OPT	OPT
4-pt. Manual Electric Levelers–Workhorse®	OPT	N/A	N/A
4-pt. Manual Electric Levelers–Ford®	OPT	STD	STD
Heated Remote Rear View Mirrors	OPT	OPT	OPT
Rear Vision Camera	OPT	OPT	OPT
Dual Glazed Windows	OPT	OPT	OPT
EXTERIOR AUTOMOTIVE	30H	31A	33R
Workhorse® Chassis 8.1L Engine	OPT	N/A	N/A
Ford® Chassis 6.8L Engine	OPT	OPT	OPT
INTERIOR	30H	31A	33R
Twin Beds	OPT	N/A	N/A
Ultraleather™ Driver/Passenger Seats	OPT	OPT	OPT
Solid Divider Doors	STD	N/A	STD
SLIDE-OUT	30H	31A	33R
Living Room–Dinette/Sofa	N/A	N/A	STD
Galley–Galley/Dinette	N/A	STD	N/A
Bedroom–Bed	N/A	STD	N/A
Bedroom–Bed/Wardrobe	N/A	N/A	STD

*Recommended for extreme temperatures and high humidity conditions.

STANDARD FEATURES

FLEETWOOD RV™

APPLIANCES

- 20" Panasonic® TV in Overhead
- Smoke Detector/Alarm
- LPG Leak Detector/Alarm
- CO Detector/Alarm
- Furnace 35M BTU
- 6-Gallon Quick Recovery Water Heater with D.S.I.
- 16" 3-Burner, High-Output Range with Oven
- Light/Power Range Hood & Monitor Panel
- Folding Range Cover
- Single, Front Area, A/C with Solar Panel
- Water Heater Bypass
- Marine Toilet
- 1-cu. ft. Microwave with Electric Touch Pad
- 6-cu. ft. Dometic® Double-Door Refrigerator
- Single-Lever Galley Faucet
- Demand Water Pump with Filter
- Power Bath Vent
- TV Antenna
- Video Control Box
- Fire Extinguisher
- Rear Speakers in Bedroom
- Telephone Jack in Dash and Bedroom
- 12V Jack

BODY STRUCTURE

- Vacu-Bond® Upper/Lower Floor
- Vacu-Bond® Walls with Smooth Exterior Fiberglass Tuff Coat™
- Radiused Roof with Ducted A/C & Flat Interior
- TPO Roof
- Steel Floor/Wall/Ceiling Framing

ELECTRICAL

- Patio Receptacle in Luggage Compartment
- 120V/12V AC/DC Converter Central Electrical Panel with Charger
- Water Pump Switch
- 4.0kW Onan® Generator
- 30-amp Service
- Dual 6V/Deep-Cycle 218 amp House Batteries
- VCR Ready
- Rear TV Receptacle

EXTERIOR

- Fiberglass Front Cap
- Swing-Down Engine Access Door

EXTERIOR (CONT.)

- Fiberglass Front Grille
- ABS Front/Rear Wheel Well Trim
- Entry Door with Deadbolt Latch
- Slider Windows Throughout
- Flair Logo Badging
- 4-Point Manual Hydraulic Levelers (On Slide-Out Models)
- Roof Ladder
- Exterior Assist Handle
- Exterior Rear View Mirrors
- TV Antenna
- Park Cable Receptacle
- Awning Rail/Drip Molding (Both Sides)
- Power Entry Step
- Exterior Shower
- Porch Light
- 3 Colorway Graphics to Match Decor

EXTERIOR AUTOMOTIVE

- Tinted Windshield
- Undercoating
- Stainless Steel Wheel Simulators
- Valve Extenders
- Steel Surface on Bulkhead
- Trailer Hitch with 7-Point Electrical Hook-up*
- Halogen Headlights
- Under-Floor Spare Tire
- Dual Battery Charge Control
- Single-Motor Windshield Wipers with Wet Arm

EXTERIOR STORAGE

- Smooth Aluminum Luggage Doors
- Single-Paddle/Metal Latches
- Continuous One-Piece Bulb Seals
- Gas Lift Strut Supports—One Per Door
- Steel Seal Frames
- Carpeted Luggage Compartments
- Lighted Luggage Compartments

INTERIOR

- 3 Interior Decors
- Skylight in Tub/Shower
- Wall-to-Wall Carpet with Pad—Living & Bedroom
- Vinyl Floor Covering—Galley & Bath
- Wood Drawers
- Roller-Guide Drawer Slides with Transit Ship Locks

INTERIOR (CONT.)

- Brass-Finished Cabinet Hardware
- Seat Belts at Designated Seating Positions
- Shades—Day/Night in Living, Night in Bedroom
- Bedspread
- Restonic® Innerspring Mattress
- Slide-Out Dinette Bins with Locks
- Cabinet Doors & Drawers
- Window Covering
- Bright Brass Bath Accessories
- Entry Rail (Oak & Brass)
- Raised Panel, Overhead Cabinet Doors
- Adjustable Cabinet Shelves (Selected Cabinets)
- Sink Cutting Board
- Large, Double Stainless Steel Sink

INTERIOR AUTOMOTIVE

- Intermittent Wiper Control
- Double-Swivel Sun Visors with Map Pockets
- Engine Cover Convenience Tray
- Cruise Control
- Radio with Cassette AM/FM/MX Electronic Tuning
- Tilt Steering Wheel
- Auxiliary Start Circuit
- Battery Disconnect System
- Auto A/C Heater Combo
- Battery-Powered Radio Switch—Main/Auxiliary
- Driver/Passenger Side Magazine Rack
- Driver/Passenger Captain's Chairs with Reclining Back/Slide Controls
- 3-Point Seat Belts on Driver/Passenger Seats

INTERIOR LIGHTING

- Decor Lighting
- Incandescent Lighting
- Make-Up Lights in Bath

PLATFORM CONSTRUCTION

- Basement Floor Configuration
- Heated Water & Holding Tank Compartments
- Carpeted, Galvanized Luggage Compartments
- Steel Truss System
- Power Platform II

* The chassis manufacturer recommends the installation of a supplemental brake control system to activate the brakes on the vehicle or trailer you are towing.

Why would you buy anything else?

FLEETWOOD RV™

For every road you travel, Fleetwood has the RV to fit your high standards and lifestyle. We build the recreational vehicles America wants, accounting for nearly one out of every three RVs on the road today. How do we do it? We call it the **Fleetwood Equation**.

Size + Service + Quality = Value!

Size *The world's #1 RV manufacturer*

Over the past half-century Fleetwood has grown to become the largest manufacturer of recreational vehicles in the world. Fleetwood remains, year after year, the largest, most influential, innovative and recognized leader in the RV industry.

Service *Listening to our customer*

With over 1,100 service dealers in the US and Canada, Fleetwood has the largest network in the RV industry. No other RV company comes close to equaling this vital customer support system. Fleetwood RV service dealers have instant, real-time electronic access to your service records as well as parts inventory and warranty repair authorization inquiries. We also provide a customer call center for service and product information so no matter where you travel in North America, professional support and fast answers are always nearby. Call toll free: 1-800-322-8216.



Quality *Using only the best materials*

At Fleetwood, quality begins at the design stage so every coach is built right, right from the start.

Subsequent to design approval, full-functioning prototypes are built, then punished on a test track and subjected to accelerated life cycle tests where a few weeks can equal years of normal use. At the same time, components and systems are test-cycled thousands of times assuring years of problem-free use. Once approved for production, each unit is built by skilled technicians using quality materials and components, many of which are sourced through, or manufactured by, our subsidiary companies such as Gold Shield Fiberglass and Continental Lumber Products.



Fleetwood engineers specify the very best products and appliances from companies such as Coleman®, Dometic®, Flexsteel®, Ford®, Freightliner®, Magic Chef®, Panasonic®, and Workhorse®. These companies are experts in their respective fields and play a significant role as partners, not just suppliers.

All this assures that every Fleetwood RV has the fit, finish and details required by our high standards—as well as yours.

Value *Priced right with style*

At Fleetwood RV, we look at value as the sum of everything we offer.

- **Value** is our design, engineering expertise, and innovative manufacturing methods.
- **Value** is structures and components that are the best in the industry, that meet or exceed government and industry safety standards.
- **Value** is Ownercare—a one-year/three-year warranty with coverage from a company that will be around in the future to service your needs. Ownercare is one of the RV industry's most comprehensive programs and includes systems and applications, construction, no deductible and no service charge. And it is fully transferable for the first 12 months. See your nearest Fleetwood dealer for a full explanation of benefits and restrictions.
- **Value** is customer satisfaction. When asked, more experienced RV owners would recommend Fleetwood to a friend than any other brand. Fleetwood RVs consistently hold their value better than most RVs at trade-in time.



Value is peace of mind.

SSQV—Size, Service, Quality, and Value. Together they equate to the very best RV you can buy, and the reason you should purchase a Fleetwood over any other brand.

Require these features when you purchase your next RV... Fleetwood does!

See you on the road!

SSQV.

Limited One-Year/Three-Year Warranty

For Motor Homes Manufactured by subsidiaries of Fleetwood Enterprises, Inc., sold in the United States and Canada

Coverage Provided

Your new motor home, including the structure, plumbing, heating, electrical systems, all appliances and equipment installed by the manufacturer, is warranted under normal use to be free from manufacturing defects in material or workmanship. Appearance imperfections or damage to paint, graphics, exterior materials, or upholstery that may have occurred prior to delivery are normally corrected during the inspection process at the manufacturing plant or at the dealership.

The warranty extends to the first retail purchaser and his transferee(s) and begins on the date of original retail delivery or the date the motor home is first placed into service as a rental, commercial or demonstrator unit (whichever occurs first). The warranty extends for the following periods:

1. For all defects (other than structural) the warranty extends for a period of one year from such date or until the unit has received 15,000 total miles of use as determined by the mileage shown on the odometer (whichever occurs first).
2. For structural defects, 3 years; structural defects are limited to the following: roof structure, sub-floor structure, exterior walls, interior walls and ceilings.

Written notice of defects must be given to the selling dealer or manufacturer not later than ten (10) days after the expiration of the warranty period.

Owner's Obligation

The owner is responsible for normal maintenance as described in the Owner's Information Package; however, minor adjustments (such as cabinet latches, TV antenna control, etc.) will be performed by the dealer during the first 90 days of warranty coverage. Thereafter, such adjustments are the responsibility of the owner as normal maintenance unless required as a direct result of repair or replacement of a defective part under this warranty.

If a problem occurs which the owner believes is covered by this warranty, the owner shall contact the selling dealer, or the Fleetwood Service Center, giving sufficient information to resolve the matter. The owner shall deliver the motor home to the dealer or the Fleetwood Service Center location for warranty service.



Join Now!
(877) 577-2560

Fleetwood Enterprises, Inc. • RV Marketing • P.O. Box 7638 • Riverside, CA 92513-7638
www.fleetwoodrv.com

Your local Fleetwood RV dealer is:

Dealer's Obligation

By agreement with the manufacturer, the dealer is obligated to maintain the motor home prior to retail sale, to perform a detailed predelivery inspection and to repair or replace any parts necessary to correct defects in material or workmanship.

When the Dealer Does Not Resolve the Problem

If the dealer is unable or unwilling to resolve a problem which the owner is convinced is covered by the warranty, the owner should contact the Fleetwood Service Center at the address listed below and provide the Fleetwood Service Center with a description in writing of the problem and attempts made to resolve it.

Manufacturer's Obligations

Upon receipt of notice of a claim, where the dealer was unable or unwilling to resolve the problem the Fleetwood Service Center will repair or replace any parts necessary to correct defects in material or workmanship or will take other appropriate action as may be required.

What is Not Covered By This Warranty

This warranty does not cover:

1. The automotive chassis system (including the chassis and drive train), tires and batteries, which are covered by the separate warranties of the respective manufacturers of these components.
2. Defects caused by or related to:
 - a. Abuse, misuse, negligence or accident;
 - b. Failure to comply with instructions contained in the Owner's Information Package;
 - c. Alteration or modification of the motor home;
 - d. Environmental conditions (salt, hail, chemicals in the atmosphere, etc.)
3. Normal deterioration due to wear or exposure, such as fading of fabrics or drapes, carpet wear, etc.
4. Normal maintenance and service items, such as light bulbs, fuses, wiper blades, lubricants, etc.
5. Motor homes on which the odometer reading has been altered.
6. Transportation to and from dealer or Fleetwood Service Center location, loss of time, inconvenience, commercial loss, loss of use, towing charges, bus fares, vehicle rental, incidental charges such as telephone calls, or hotel bills, or other incidental or consequential damages.

Some states do not allow the exclusion of limitation of incidental or consequential damages, so the above limitation exclusion may not apply to you.

This warranty gives you specific legal rights, and you may also have other rights, which vary from state to state.

The manufacturer is not responsible for any undertaking, representation or warranty made by any dealer or other person beyond those expressly set forth in this warranty.

www.fleetwoodrv.com

Visit our website to find a dealer near you or learn more about other Fleetwood products. Or call 1-800-444-4905.

FOR CUSTOMER ASSISTANCE, call toll free at 1-800-322-8216, visit our website, or you may write to Fleetwood Enterprises, Inc., P.O. Box 7638, Riverside, CA 92513-7638.

IMPORTANT—PLEASE READ: Product information, photography and illustrations included in this publication were as accurate as possible at the time of printing. For further product information and changes, please visit our website at www.fleetwoodrv.com or contact your local Fleetwood dealer. Prices, materials, design and specifications are subject to change without notice. All weights, fuel, liquid capacities and dimensions are approximate. Fleetwood has designed its recreational vehicles to provide a variety of uses for its customers. Each vehicle features optimal seating, sleeping, storage and fluid capacities. The user is responsible for selecting the proper combination of loads (i.e. occupants, equipment, fluids, cargo, etc.) to ensure that the vehicle's capacities are not exceeded.