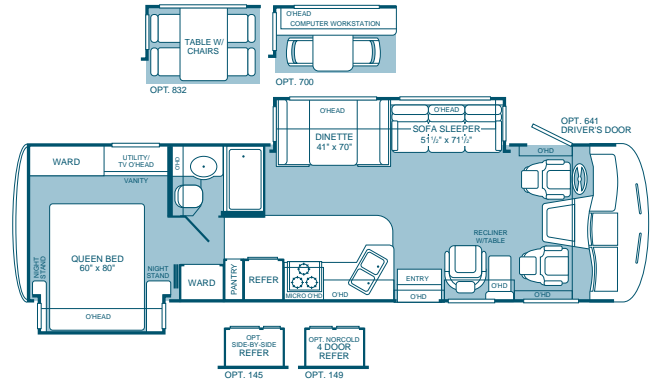
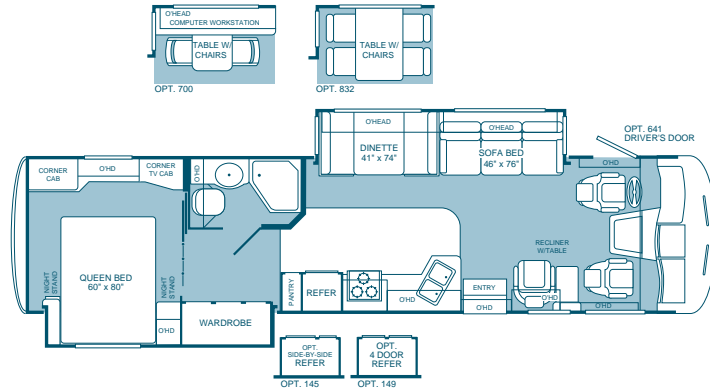


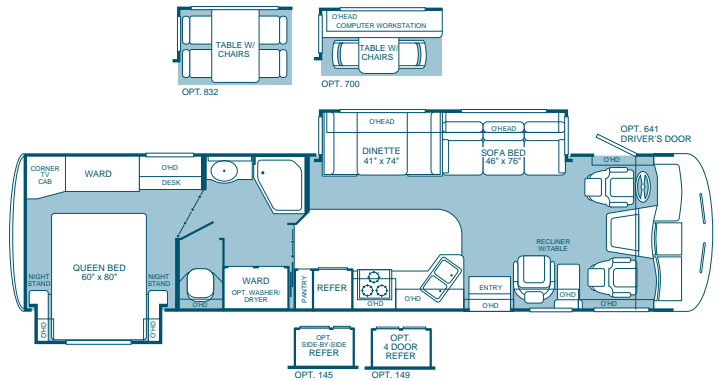
# Southwind®

"See where it takes you"

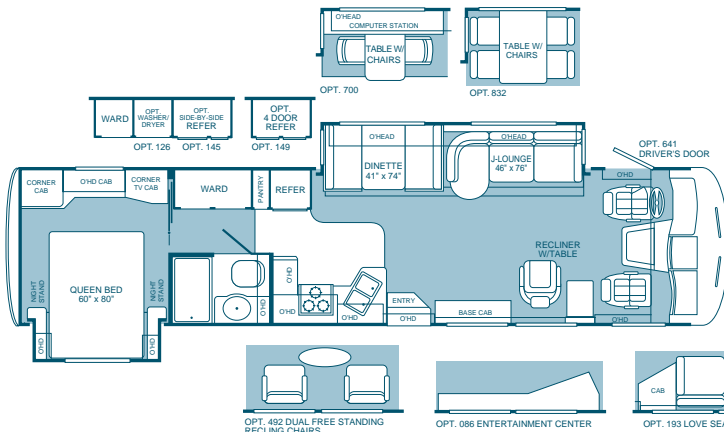
## Model 32VS



## Model 35R



## Model 36T



## Model 37U

## Standard and Optional Features

### Appliances

- Front 27" Panasonic® TV In Overhead
- Smoke Detector/Alarm
- LPG Leak Detector/Alarm
- CO Detector/Alarm
- 10-Gallon, Quick-Recovery Water Heater with D.S.I. (Gas/Electric)
- 22" 3-Sealed Burner, High-Output Cooktop with Oven
- Light/Power Range Hood
- Folding Range Cover-Flush Mount
- 1-cu. ft. Sharp® Microwave
- Furnace 34,000 BTU
- Dual Roof A/C High Efficiency with Solar Panel on Front A/C
- Water Heater Bypass System
- Porcelain Toilet with Water Saver
- Toilet Tank San-T-Flush™ System
- 8-cu. ft. Dometic® Double-Door Refrigerator
- Single-Lever Galley Faucet
- Water Filter with Faucet
- Demand Water Pump with Filter
- Power Bath Vent
- Hi-Fi VCR
- Rear Bedroom 20" Panasonic® TV
- TV Antenna
- Fan-Tastic® Power Roof Vent
- Fire Extinguisher
- Telephone Jack in Dash and Bedroom
- Rear Speakers in Bedroom
- DSS Manual Lift/Satellite Dish

### Body Structure

- Vacubond Upper/Lower Floors
- Vacubond Walls with Smooth, High-Gloss Exterior Fiberglass
- Aluminum Wall/Ceiling Framing
- Radius Roof with Ducted A/C—Flat Interior Ceiling
- Royal Tuff-Ply™ Roof

### Electrical

- Dual Patio Receptacles
- 120V/12V AC/DC Converter Central Electrical Panel
- 3-Way Water Pump Switch
- 5.5kW Generator
- 30-amp Service
- Wall Switches
- Electronic Climate Control
- Dual 6V/Deep-Cycle 218-amp House Batteries

### Exterior

- Fiberglass Front/Rear Cap
- Swing-Down Engine Access Door
- Molded Front Quarter Panels
- Molded Rear Wheel Well Trims
- Entry Door with Deadbolt Latch
- Dual Pane Slider Windows
- Stainless Steel Mesh Front Grille
- Utility Compartment with Exterior Shower

### Exterior (Cont.)

- 4-Point Manual Hydraulic Leveler System
- Roof Ladder
- Exterior Assist Handle
- Heated Remote Rear View Mirrors
- Park Cable Receptacle
- Awning Rail/Drip Molding (Both Sides)
- Power Entry Step
- Porch Light
- 3 Colorway Graphics to Match Decor
- Awning

### Exterior Automotive

- Large, Curved Aerodynamic Windshield
- Stainless Steel Wheel Simulators
- Mud Flaps
- Underhood Utility Lights
- Steel Surface on Bulkhead
- Trailer Hitch with 7-Point Electrical Hook-Up\*
- Halogen Headlights
- Fog Lights
- Rear Vision Camera with One-Way Sound
- Single Motor Windshield Wipers with Wet Arm

### Exterior Storage

- Insulated Luggage Doors/Aluminum Skin
- Single Paddle/Latches
- Continuous One-Piece Bulb Seal
- Gas Lift Strut Supports
- Lighted Compartments
- Steel Seal Frames

### Interior

- 3 Interior Decors
- Woven Jacquard Feature Fabrics
- Skylight in Tub/Shower and Galley
- Cherry Wood Grain or Maple Wood Grain
- Wall-to-Wall Nylon Carpet with Carpet Pad
- Vinyl Floor Covering-Bath
- Wood Drawers
- Roller Guide Drawer Slides with Transit Ship Locks
- Radius Corner Cabinetry
- Brushed Chrome Finish Cabinet Hardware
- 3-Point Front Seat Belts
- Bedsprad with Decor Pillows
- Restonic® Deluxe Pillow Top Innerspring Mattress
- Corian® Galley Countertops
- Lounge Recliner
- Headboard
- Beveled Mirrors
- Slide-Out Dinette Bins with Latches
- Day/Night Shades (Living Area)
- Pleated Shades (Bedroom Area)
- Trash Basket in Galley
- Molded Tub/Shower Acrylic with One-Piece Enclosure
- Chrome Bath Accessories
- Residential Seat Styling
- Interior Egress Assist Rail (Wood & Chrome)

### Interior (Cont.)

- Adjustable Cabinet Shelves (Selected Cabinets)
- TV Cabinet-Rear Bed
- Sink Cutting Board
- Solid Divider Doors
- Large, Double Stainless Steel Sink

### Interior Automotive

- Intermittent Wiper Control
- Double-Swivel Sun Visors with Map Pockets
- Engine Cover Convenience Tray
- Cruise Control
- Low Profile Engine Cover
- Radio with Cassette AM/FM/MX-Electronic Tuning
- Tilt Steering Wheel
- Computer Workstation in Dash
- Auxiliary Start Circuit
- Battery Disconnect System
- Auto A/C Heater Combo
- Radio Switch-Main/Auxiliary Power
- Driver/Passenger Captain's Chairs with Reclining Back/Slide Controls

### Interior Lighting

- Wardrobe Lighting
- Fluorescent Ceiling with Dual Bulbs
- Decor Lighting
- Incandescent Lighting
- Make-Up Lights in Bath

### Platform Construction

- Power Platform
- Basement Floor Configuration
- Heated Water & Holding Tank Compartments
- Polyethylene Luggage Compartment Boxes
- Steel Outriggers

### Options

- Multiple CD Changer
- 12-cu. ft. Side-by-Side Dometic® Refrigerator w/Ice Maker
- Norcold® 4-Door Refrigerator w/Ice Maker
- 8-cu. ft. Dometic® Double Door Refrigerator w/Ice Maker
- Sharp® Convection Microwave
- Washer/Dryer (36T and 37U Only)
- CSA Package
- Awning-One Touch
- Ford® Chassis 6.8L Triton™ V10 Engine
- Workhorse® Chassis 8.1L Vortec Engine
- Dinette Table w/Free-Standing Chairs
- Dinette/Computer Workstation
- Entertainment Center (Includes 27" Panasonic® TV with a DVD Home Theater System) (37U Only)
- CB Radio Ready
- Stereo AM/FM with CD player
- Driver's Door with Manual Crank Window Lift
- Driver/Passenger Ultraleather™ Seats with Power Driver

\* The chassis manufacturer recommends the installation of a supplemental brake control system to activate the brakes on the vehicle or trailer you are towing.

# Specifications



Ford® Chassis	32SV	35R	36T	37U
Wheelbase	208"	228"	228"	228"
GVWR (lbs) (1)	20,500	22,000	22,000	22,000
Front GAWR (lbs) (2)	7,000	7,500	7,500	7,500
Rear GAWR (lbs) (2)	13,500	14,500	14,500	14,500
Base Weight (lbs) (3)	16,000	16,800	17,000	17,200
GCWR (lbs) (4)	25,500	26,000	26,000	26,000
Hitch Rating Weight (lbs)*	5,000	5,000	5,000	5,000
Tongue Weight (lbs)*	500	500	500	500
Fuel Capacity (gal)	75	75	75	75

Workhorse® Chassis				
Wheelbase	208"	228"	228"	228"
GVWR (lbs) (1)	20,700	22,000	22,000	22,000
Front GAWR (lbs) (2)	7,500	8,000	8,000	8,000
Rear GAWR (lbs) (2)	13,500	14,500	14,500	14,500
Base Weight (lbs) (3)	16,400	17,450	17,630	17,700
GCWR (lbs) (4)	25,700	26,000	26,000	26,000
Hitch Rating Weight (lbs)*	5,000	5,000	5,000	5,000
Tongue Weight (lbs)*	500	500	500	500
Fuel Capacity (gal)	75	75	75	75

Dimensions and Capacities				
Overall Length (5)	32' 10"	35' 10"	36' 10"	37' 4"
Overall Height (with A/C) (8)	11' 11"	11' 11"	11' 11"	11' 11"
Overall Width (maximum) (6)	102"	102"	102"	102"
Interior Height (maximum)	79"	79"	79"	79"
Interior Width (maximum)	96"	96"	96"	96"
Fresh Water Holding Tank (gal)	100	100	100	100
Grey Water Holding Tank (gal)	58	58	58	58
Black Water Holding Tank (gal)	42	42	47	42
Appliance LPG Tank (gal) (WC) (7)	25	25	25	25
Water Heater Tank (gal)	10	10	10	10

<b>Liquid Weight Reference</b>	Water (gal) = (8.3 lbs/3.8 kgs)	Fuel (gal) = (6.1 lbs/2.8 kgs)	LPG (gal) = (4.5 lbs/2.0 kgs)
<b>Metric Conversion</b>	Multiply pounds x 0.453 to obtain kilograms		Multiply gallons x 3.785 to obtain liters

- GVWR (Gross Vehicle Weight Rating): Means the maximum permissible loaded weight of the motor home. The GVWR is equal to or greater than the sum of the unloaded vehicle weight plus the net carrying capacity.
  - GAWR (Gross Axle Weight Rating): Means the maximum permissible loaded weight a specific axle is designed to carry.
  - Base Weight: Means the estimated weight of the motor home without fuel, options, water, cargo or passengers.
  - GCWR (Gross Combined Weight Rating): Means the value specified by the motor home manufacturer as the maximum allowable loaded weight of this motor home with its towed vehicle. Towing and braking capacities may differ. Refer to Fleetwood and chassis manufacturer manuals for complete information.
  - Length taken from front bumper to rear bumper (excludes accessories).
  - Excludes safety equipment and awnings.
  - Tank Manufacturer's listed water capacity (WC). Actual LPG capacity is 80% of water listing as required by the safety code.
  - Add 4" for Workhorse® chassis.
- \* The chassis manufacturer recommends the installation of a supplemental brake control system to activate the brakes on the vehicle or trailer you are towing.

**IMPORTANT—PLEASE READ:** Product information, photography and illustrations included in this publication were as accurate as possible at the time of printing. For further product information and changes, please visit our website at [www.fleetwoodrv.com](http://www.fleetwoodrv.com) or contact your local Fleetwood dealer. Prices, materials, design and specifications are subject to change without notice. All weights, fuel, liquid capacities and dimensions are approximate. Fleetwood has designed its recreational vehicles to provide a variety of uses for its customers. Each vehicle features optimal seating, sleeping, storage and fluid capacities. The user is responsible for selecting the proper combination of loads (i.e. occupants, equipment, fluids, cargo, etc.) to ensure that the vehicle's capacities are not exceeded.

# Why would you buy anything else?

**FLEETWOOD RV**  
The World's #1 RV Manufacturer

For every road you travel, Fleetwood has the RV to fit your high standards and lifestyle. We build the recreational vehicles America wants, accounting for nearly one out of every three RVs on the road today. How do we do it? We call it the **Fleetwood Equation**.

# Size + Service + Quality = Value!

## Size The world's #1 RV manufacturer

Over the past half-century Fleetwood has grown to become the largest manufacturer of recreational vehicles in the world.

Fleetwood remains, year after year, the largest, most influential, innovative and recognized leader in the RV industry.

## Service Listening to our customers

With over 1,100 service dealers in the US and Canada, Fleetwood has the largest network in the RV industry. No other RV company comes close to equaling this vital customer support system. Fleetwood RV service dealers have instant, real-time electronic access to your service records as well as parts inventory and warranty repair authorization inquiries. We also provide a customer call center for service and product information so no matter where you travel in North America, professional support and fast answers are always nearby. Call toll free: 1-800-322-8216.



## Quality Using only the best materials

At Fleetwood, quality begins at the design stage so every coach is built right, right from the start. Subsequent to design approval, full-functioning prototypes are built, then punished on a test track and subjected to accelerated life cycle tests where a few weeks can equal years of normal use. At the same time, components and systems are test-cycled thousands of times assuring years of problem-free use. Once approved for production, each unit is built by skilled technicians using quality materials and components, many of which are sourced through, or manufactured by, our subsidiary companies such as Gold Shield Fiberglass and Continental Lumber Products.



Fleetwood engineers specify the very best products and appliances from companies such as Coleman, Dometic, Flexsteel, Ford, Freightliner, Magic Chef, Panasonic, and Workhorse. These companies are experts in their respective fields and play a significant role as partners, not just suppliers.

All this assures that every Fleetwood RV has the fit, finish and details required by our high standards—as well as yours.

## Value Priced right with style

At Fleetwood RV, we look at value as the sum of everything we offer.

- **Value** is our design, engineering expertise, and innovative manufacturing methods.
- **Value** is structures and components that are the best in the industry, that meet or exceed government and industry safety standards.
- **Value** is Ownercare—a one-year/three-year warranty with coverage from a company that will be around in the future to service your needs. Ownercare is one of the RV industry's most comprehensive programs and includes systems and applications, construction, no deductible and no service charge. And it is fully transferable for the first 12 months. See your nearest Fleetwood dealer for a full explanation of benefits and restrictions.
- **Value** is customer satisfaction. When asked, more experienced RV owners would recommend Fleetwood to a friend than any other brand. Fleetwood RVs consistently hold their value better than most RVs at trade-in time.



## Value is peace of mind.

SSQV—Size, Service, Quality, and Value. Together they equate to the very best RV you can buy, and the reason you should purchase a Fleetwood over any other brand.

Require these features when you purchase your next RV... Fleetwood does!

See you on the road!

**FLEETWOOD RV**  
The World's #1 RV Manufacturer

Fleetwood Enterprises, Inc. • RV Marketing • P.O. Box 7638 • Riverside, CA 92513-7638

Your local Fleetwood RV dealer is:



Join Now!  
(877) 577-2560

[www.fleetwoodrv.com](http://www.fleetwoodrv.com)

Visit our website to find a dealer near you or learn more about other Fleetwood products. Or call 1-800-444-4905.

FOR CUSTOMER ASSISTANCE, call toll free at 1-800-322-8216, visit our website, or you may write to Fleetwood Enterprises, Inc., P.O. Box 7638, Riverside, CA 92513-7638.

**IMPORTANT—PLEASE READ:** Product information, photography and illustrations included in this publication were as accurate as possible at the time of printing. For further product information and changes, please visit our website at [www.fleetwoodrv.com](http://www.fleetwoodrv.com) or contact your local Fleetwood dealer. Prices, materials, design and specifications are subject to change without notice. All weights, fuel, liquid capacities and dimensions are approximate. Fleetwood has designed its recreational vehicles to provide a variety of uses for its customers. Each vehicle features optimal seating, sleeping, storage and fluid capacities. The user is responsible for selecting the proper combination of loads (i.e. occupants, equipment, fluids, cargo, etc.) to ensure that the vehicle's capacities are not exceeded.