

2003 ESSEX

2003 ESSEX | BY NEWMAR



NEWMARCORP.COM



*We shall not cease from exploration
And the end of all our exploring
Will be to arrive where we started
And know the place for the first time.*

~ T. S. Eliot

A HIGHER ROAD

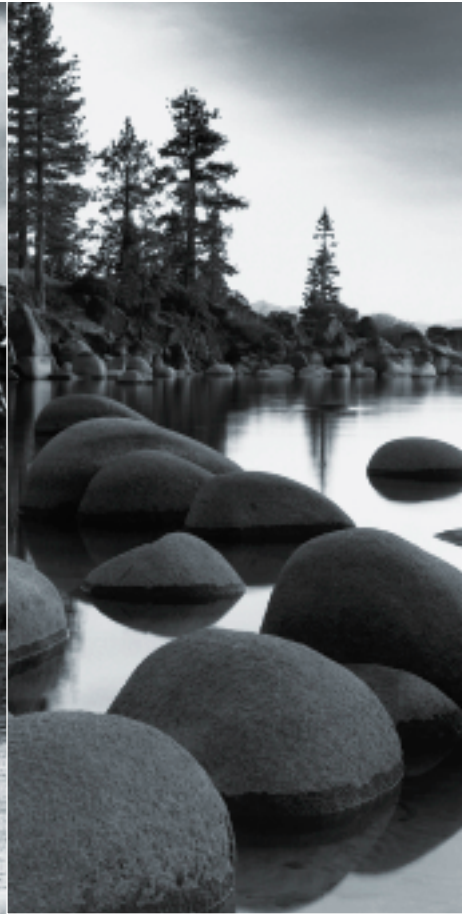
With a heritage of unwavering dedication, we create. With decades of knowledge and experience, we innovate. And, with ongoing input from impassioned Newmar owners and imaginative engineers, we craft. At Newmar, quality is our way of life. Come inside and experience where our journey has led...



THE ROAD TO ESSEX

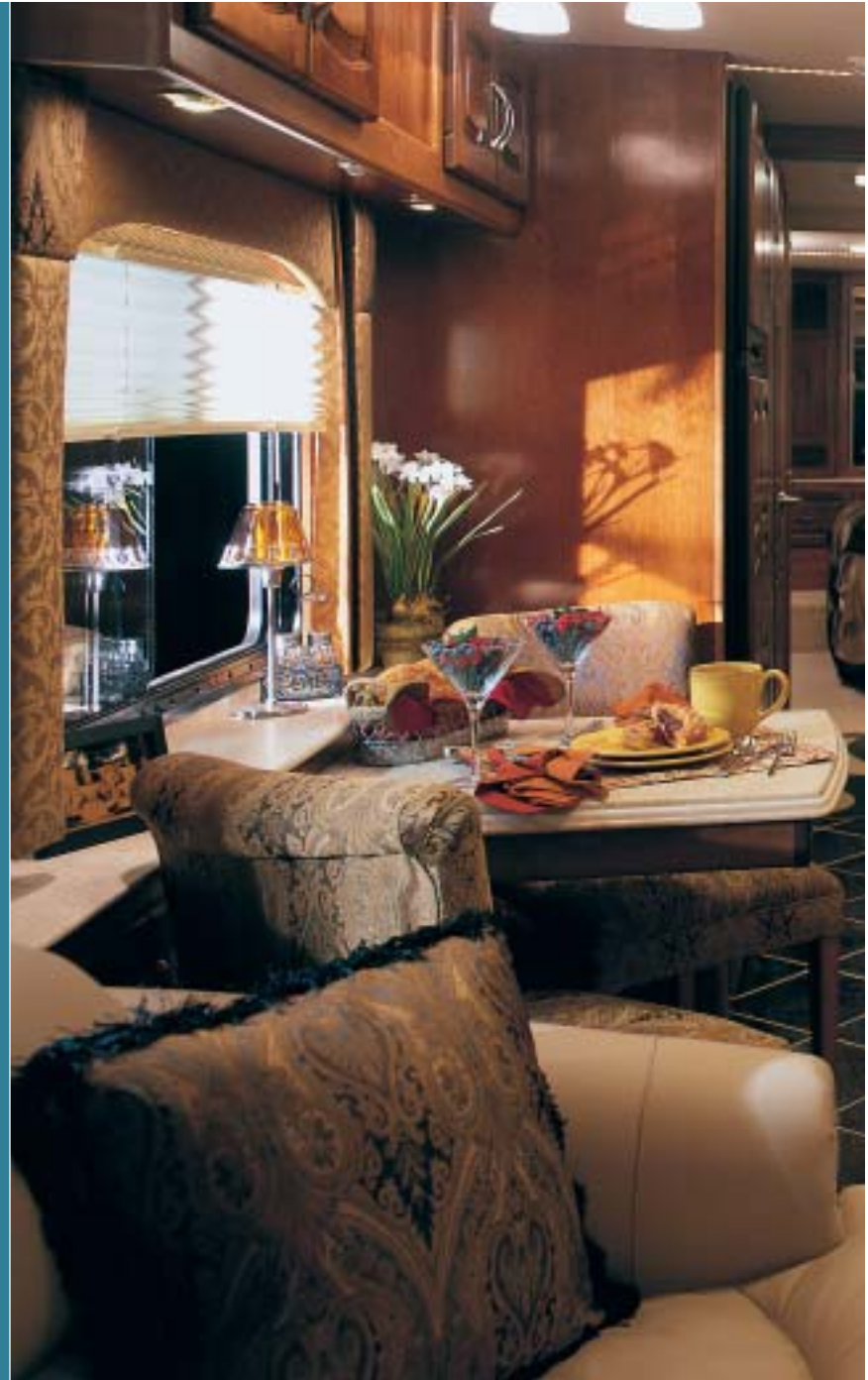
The objective was to create a coach, distinctive in design, lavish in appointments and unparalleled in refinement, to be offered for a select group of discerning individuals. Upon accomplishing this goal, we realized something deeper than we could have imagined — that all our exploring had led us back to a new level of appreciation for our beginnings as a company, our way of life and the aspirations of Newmar owners. The Essex is a crystal clear reflection of our passion for purity and excellence in all things. It's with this spirit that we invite you to experience Essex.



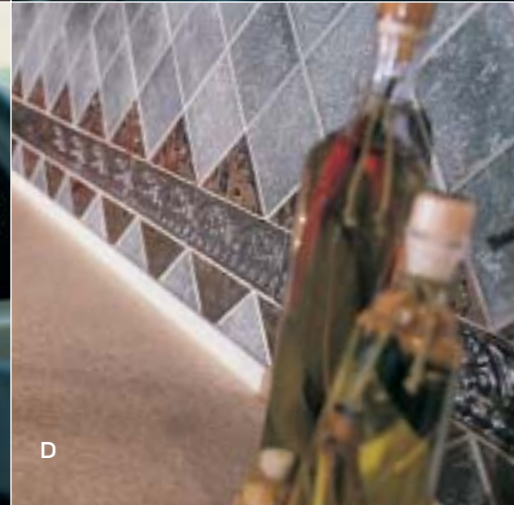


EMBRACE

An intimacy that welcomes you to an abundant spaciousness of living — the inner world of Essex. Select oak, maple or cherry hardwood cabinetry, delicately formed and finished, resting on ceramic tile flooring. Corian® countertops and basins, hand milled to blend seamlessly. In addition, the choice of one of four exquisite décors provides you with a palette of color that speaks to your individual taste. Working in concert, these and other numerous interior elements of the Essex ensure that your expectations of luxury are fully realized.

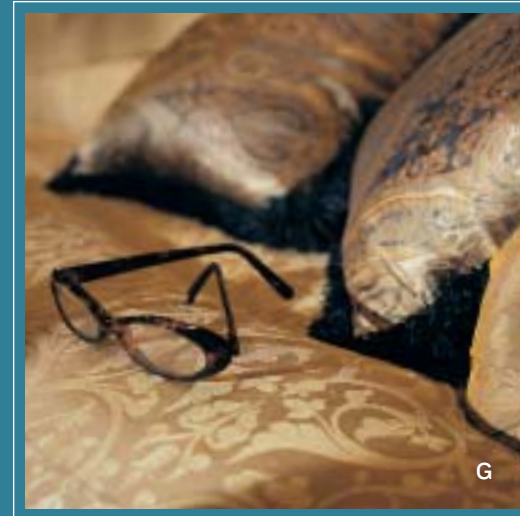






THE ELEGANCE OF DETAIL

Filled with Newmar innovation, the Essex surrounds you with comfort, convenience and control at every turn. The driver's seat provides a command position, offering excellent visibility of the road and easy access to all cockpit controls, minimizing distractions. Featuring tilt and telescoping steering, power-activated sun visors, power driver's side window and exclusive designer fabrics, the Essex offers you exceptional comfort, while appointments and technological features provide precise information for safety, convenience and navigation.



INTERIOR FEATURES

(facing page: clockwise, from upper left)

- A. Bedroom, shown in Burnished Gold
- B. Sumptuous leather upholstery
- C. LCD Navigation Display
- D. Ceramic kitchen backsplash
- E. Backlit analog instrument array
- F. Window treatments, exquisite and functional
- G. Silk décor accents (above right)

EXHILARATION

The Essex reflects a brilliant impression anywhere you choose to travel. Smooth gel-coated sides, roof and end caps serve as an exclusive showcase for both the artistry and technology Newmar brings to exterior full-paint finishes, which are available in stunning colors and graphics. Offering adornments of chromed heated mirrors and polished Alcoa® aluminum wheels, the Essex provides an exquisite presence in any environment.

EXTERIOR FEATURES

(facing page: clockwise, from upper left)

- A. Front view, Burnished Gold exterior
- B. Adjustable heated mirrors
- C. Brilliant chrome wheels and trim
- D. Spacious pass-through storage with convenient pull-out trays
- E. Smoothly contoured integrated tail lamps



E







A | Emerald Sand



B | Quicksilver Blue



A | Sandstone



B | Quicksilver

DÉCOR

With the range of full-paint choices, fabrics, colors and textures available in Newmar's designs, you have a broad palette of self-expression. Newmar's interior and exterior color combinations are designed to delight your senses of sight and touch, and allow you to choose a décor as individual as you are.



C | Plumeria



D | Burnished Gold



C | Plumeria



D | Burnished Gold

NEWMARCORP.COM

Like what you see? Maybe you want to learn more about who we are — to discover more about what we mean by “Newmar Quality: A Way of Life.” At newmarcorp.com, you’ll find the latest updates on individual model specifications, floorplans, special packages and more. You’ll also find a wealth of resources to help you become more familiar with our heritage, our history and our innovations.



A FAMILY EXPERIENCE

Among impassioned Newmar owners, sharing experiences and enthusiasm is only natural. We offer an organization that encourages this passion and celebrates the Newmar experience. The Newmar Kountry Klub offers:

- An open line of communication between Newmar and Newmar owners
- An open forum for Newmar owners to meet and share their experiences
- An open environment of fellowship, adventure, friendship and recreation

As a Kountry Klub member, you have the opportunity to enjoy many amenities and privileges, including the Klub magazine, rallies, caravans and special RV show events. Call 877-639-5582 or go to newmarcorp.com for more information.

OPPOSITE PAGE

Premium exterior entertainment center,
with flat-screen television and integrated audio system



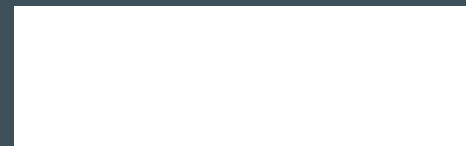
FOR MORE INFORMATION, VISIT US AT
NEWMARCORP.COM

OR CONTACT US AT
I 574 773 779I



Newmar Quality: A Way of Life

OFFICIAL NEWMAR DEALER:



Some features shown in our literature are optional. Colors and finishes are photographic representations and may appear differently when viewing actual materials. Prices, specifications and floorplans are subject to change at Newmar's discretion without prior written notice or obligation. Please see your dealer for actual samples and specifications. ©2002 Newmar Corporation. Printed in the U.S.A. (8/02)

Newmar Corporation
2003 Essex Diesel Pusher
Specifications & Floorplans



2003 Essex
Diesel Pusher



2003 ESSEX DIESEL PUSHER

STANDARD FEATURES

MOTORIZED CHASSIS FEATURES

- Cruise Control
- Anti Lock Braking System
- Tilt and Telescope Steering Wheel
- Polished Aluminum Wheels
- Recessed Fuel Fills with Cross Over To Fill From Either Side
- Spartan K2 500HP Chassis
- Back Up Alarm

AIR CONDITIONING & HEATING

- Two - 15,000 BTU Penguin Heat Pump Central Air Conditioners
- LP Leak Detector
- Dash Heater and Air Conditioner High Output
- Dash Heat/Air with Climate Control
- Hydronic Zone Heating System

APPLIANCES & ACCESSORIES

- 30" Convection Microwave with Stainless Steel Finish
- Flat Screen Color TV in Dash Overhead
- Flat Screen Color TV in Bedroom
- 2-Burner Recessed Cooktop
- AM/FM/XM Dash Radio with Combination Rear View Color Monitor System
- Remote 6 Disc CD Changer with Subwoofer Included with Dash Radio
- Dometic® 1292 Refrigerator (12 Cubic Foot)
- TV Antenna with Power Booster, One Exterior Jack, and Two Interior Jacks
- VCR and Audio Video Smart Source with Remote Control
- Cable TV Connection with RG 6 Coax
- Satellite Prep (Phone, TV Jack, and Recept)
- Washer/Dryer Prep for Compact Washer/Dryer
- Air Horns
- Safe
- CB Antenna
- TV Antenna Warning Light
- Driving Lights
- Interior Courtesy Lights
- Bose® 3-2-1 System, DVD/CD Player, and Subwoofer
- Bose® Wave Radio with CD Player and Alarm Clock in Bedroom
- Interior Rear View Mirror with Electronic Compass and Temperature Display

CABINETS & FURNITURE

- Flexsteel® Leather/Vinyl Front Seats with Eight-Way Power, Power Lumbar, and Oversized Passenger Seat
- Flexsteel® Sofa
- Oak Hardwood Cabinets with Raised Panel Double Arched Doors
- Corian® Countertop in Kitchen with Integrated Sink Bowls
- Corian® Lavatory Countertop in Bathroom with Integrated Bowl

- Corian® Countertop on Bedroom Nightstands
- Luxurious Pillow Top Mattress

ELECTRICAL FEATURES

- Two-45 Amp Converters
- Battery Disconnect for House Batteries
- 8.0 PowerTech® Diesel Quiet Series Generator on Slides with Automatic Changeover
- 5 Watt Solar Panel to Charge Chassis Battery
- 50 Amp Electrical Service with Flexible Cord
- Emergency Engine Start Switch
- Exterior Security Lights (One Installed on Each Side)
- Lights in Exterior Storage Compartments
- Daytime Headlight System
- Lights in Wardrobes
- Solar Prep, Wire from Roof to Battery Compartment
- ICC Light Flasher Switch
- Four 6 Volt House Batteries on Pull Out Tray
- Recessed Docking Lights
- Automatic Generator Start
- Mood Lights Recesses in Ceiling, Living Room Lambrequins, and Kitchen Valance
- Power Rewind Cord Reel
- Trace 2000 Watt Inverter

EXTERIOR FEATURES

- Convex Exterior Chrome Mirrors with Remote Control and Defrost
- Gel-Coated Fiberglass Exterior Sides, Roof, and Top Wrap
- Class 5, 10,000# Hitch
- Hydraulic Leveling Jacks with Automatic Control and Air Dump
- Fully Painted Exterior Graphics with Clear Coat Finish
- Roof Rack and Ladder

INTERIOR FEATURES

- Lined Day/Night Pleated Window Shades and Lambrequins
- Padded Vinyl Ceiling
- Quilted Bedspread with Reverse Sham, Matching Bed Base, and Accent Pillows
- Two Sink Covers
- Luxurious Pillow Top Mattress
- Sun Shade on Driver and Passenger Side Windows
- Ceramic Floor Tile in Kitchen, Bathroom, and Entry Area
- Decorative Area Rug in Kitchen
- Decorative Hardwood Fascia on Living Area Slide Out
- Power Activated Sun Visors

PLUMBING & BATH FEATURES

- Exterior Convenience Wash Station with Hot/Cold Water, Soap Dispenser, and Towel Dispenser
- Monitor Panel
- Sewage Holding Tank Rinse
- Thetford® Aria Sculptured China Stool
- Fiberglass Tub/Shower with Glass Shower Door
- Demand Water System with Aquajet® ES Pump

- Automatic Rewind Water Hose Reel
- Water Filter with Drink Dispenser at Kitchen Sink
- Delta® Faucets in Kitchen and Bathroom

CONSTRUCTION FEATURES

- Aluminum Frame Sidewalls and Roof Construction, 16" On Center
- Roof R-Value Rating: 17
- Sidewall R-Value Rating: 11
- Floor R-Value Rating: 11

WINDOWS, AWNINGS, & VENTS

- Double Pane, Tinted Safety Glass Windows
- Automatic Double Entrance Door Step
- Fan-Tastic® Vent with Rain Sensor in Kitchen and Bathroom
- Skylight in Bathroom
- Front Entry Door with Power Flush Stepwell Cover
- Driver's Side Power Window
- A&E® Weather Pro Awning

OPTIONAL FEATURES

MOTORIZED CHASSIS FEATURES

- Trip Tek Electronic Travel Information, Displayed on Rear View Monitor Screen

APPLIANCES & ACCESSORIES

- Norcold® Four Door Refrigerator with Icemaker
- Two Piece Washer/Dryer Available on the 4373 Kensington
- Compact Washer/Dryer
- Navigation System, Displayed on Rear View Monitor Screen (8 lbs.)
- External Entertainment Center with Flat Screen TV and AM/FM CD Radio (132 lbs.)
- 100 lb. Norcold® Freezer on Slides (113 lbs.)
- 32" Plasma Flatscreen TV in Front Overhead

CABINETS & FURNITURE

- Cherry Hardwood Cabinets
- Pecan Maple Hardwood Cabinets
- Summer Maple Hardwood Cabinets
- King Size Bed

ELECTRICAL FEATURES

- Roof Mounted Spotlight (3 lbs.)
- 7.5 Onan® Diesel Quiet Series Generator (25 lbs.)

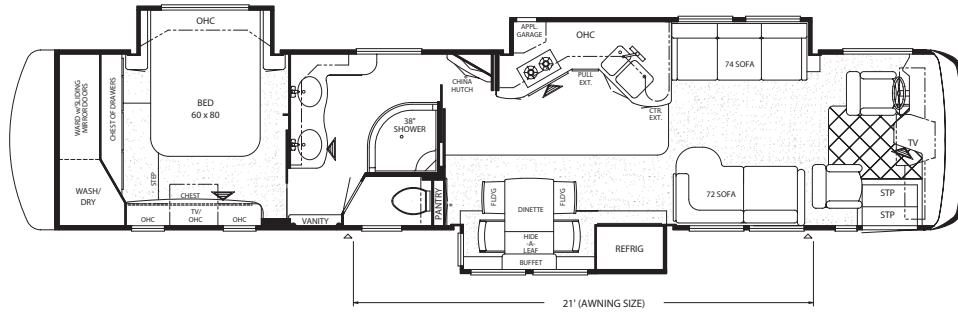
EXTERIOR FEATURES

- Front Protective Film
- Front Protective Shield

WINDOWS, AWNINGS, & VENTS

- Girard® Power Side Awning with Wind Sensor and Remote Control (100 lbs.)
- Keyless Entrance Door Pad

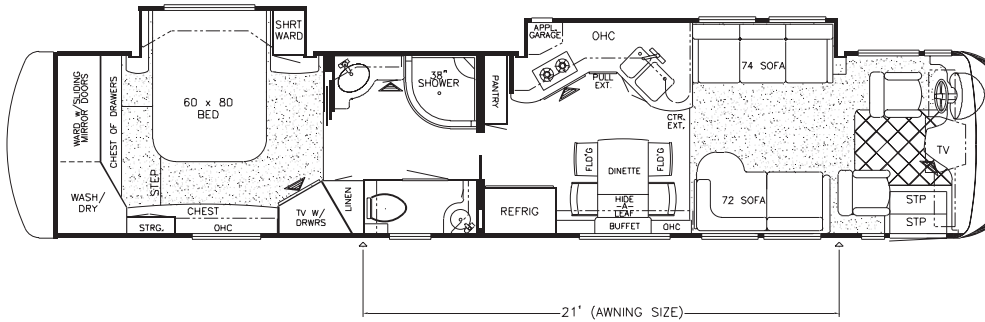
NEWMAR SPECIFICATIONS: 2003 ESSEX DIESEL PUSHER



2003 Essex Diesel Pusher 4371

Oxford

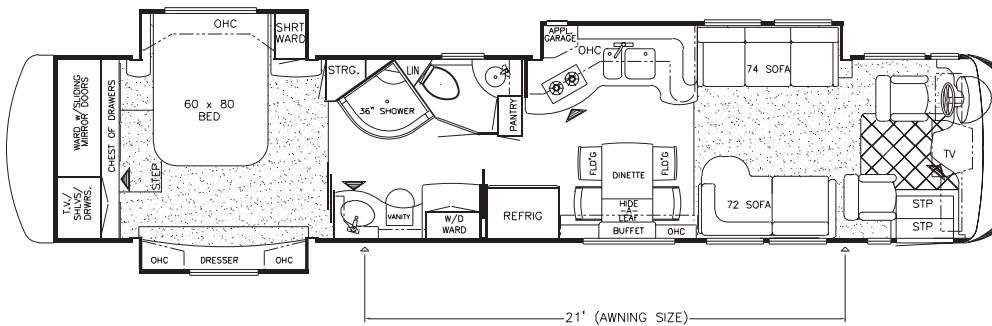
Model	EXDP 4371
APP. OVERALL LENGTH	43' 11"
WIDTH	100
APP. OVERALL HEIGHT	12' 3"
INTERIOR WIDTH	94"
INTERIOR HEIGHT	78"
GREY	65
SEWAGE	45
WATER	105
LP	32
FURNACE	50,000
WATER HEATER	10



2003 Essex Diesel Pusher 4372

Cambridge

Model	EXDP 4372
APP. OVERALL LENGTH	43' 11"
WIDTH	100
APP. OVERALL HEIGHT	12' 3"
INTERIOR WIDTH	94"
INTERIOR HEIGHT	78"
GREY	65
SEWAGE	45
WATER	105
LP	32
FURNACE	50,000
WATER HEATER	10

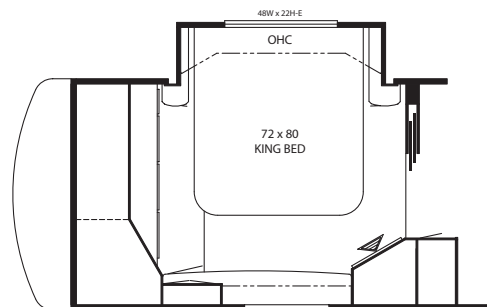


2003 Essex Diesel Pusher 4373

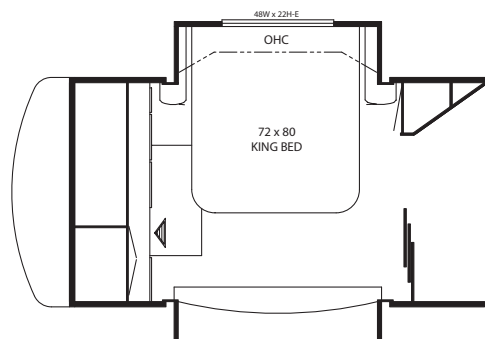
Kensington

Model	EXDP 4373
APP. OVERALL LENGTH	43' 11"
WIDTH	100
APP. OVERALL HEIGHT	12' 3"
INTERIOR WIDTH	94"
INTERIOR HEIGHT	78"
GREY	65
SEWAGE	45
WATER	105
LP	32
FURNACE	50,000
WATER HEATER	10

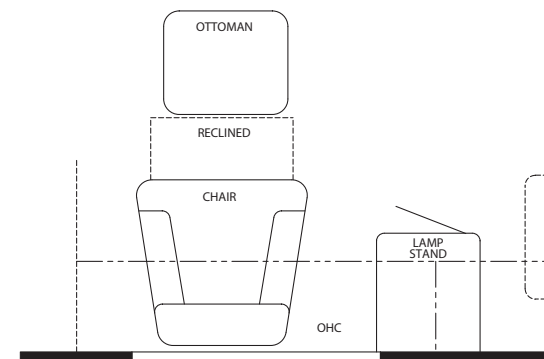
FLOORPLAN OPTIONS: 2003 ESSEX DIESEL PUSHER



<i>Option K630</i>	King Bed
	EXDP: 4372



<i>Option K630</i>	King Bed
	EXDP: 4373



<i>Option K830</i>	Chair with Ottoman and Lamp Stand
	EXDP: 4371, 4372, 4373

CHASSIS SPECIFICATIONS: 2003 ESSEX DIESEL PUSHER

SPARTAN CHASSIS INFORMATION

NAME			ENGINE	AXLE	FUEL	WHEEL	*FRONT	*REAR	*TAG	*GVWR	*GCWR	APP.	APP.
EX	DP	4371	HP	RATIO	CAP.	BASE	GAWR	GAWR	GAWR			UVW	NCC
EX	DP	4371	500	4.11	150	282 + TAG	13,700	20,000	10,000	43,700	53,700	33,000	10,700
EX	DP	4372	500	4.11	150	282 + TAG	13,700	20,000	10,000	43,700	53,700	32,550	11,150
EX	DP	4373	500	4.11	150	282 + TAG	13,700	20,000	10,000	43,700	53,700	32,900	10,800

Lengths, Heights, Widths, and Dry Weights are approximate. Weight will vary based on optional equipment added to the above base weight.

GAWR: Gross Axle Weight Rating is the maximum permissible weight for an axle.

GVWR: Gross Vehicle Weight Rating is the maximum permissible weight of a fully loaded motorhome.

GCWR: Gross Combination Weight Rating is the value specified by the manufacturer of the vehicle as the maximum allowable loaded weight of this motorhome and any towed trailer or towed vehicle.

UVW: Unloaded Vehicle Weight is the weight of this motorhome as built at the factory with full fuel, engine oil, and coolants. The UVW does not include cargo, fresh water, LP gas, or dealer installed accessories.

NCC: Net Carrying Capacity is the maximum weight of all occupants, including the driver, personal belongings, food, fresh water, waste water, LP gas, tools, tongue weight of towed vehicle, dealer installed accessories, etc., that can be carried by the motorhome.

* Specifications supplied by chassis manufacturer.

3-36

Newmar Freedom Warranty™

The Newmar Freedom Warranty simply and clearly details the most impressive coverage in the industry. Three years or 36,000 miles, whichever comes first. Bumper to bumper. It's a symbol of our uncompromising pursuit of quality.

Newmar takes great pride in ensuring our owners have made the right choice. It's yet another way of reinforcing Newmar's commitment to the customer, and a challenge to the rest of the industry to raise its standards for the benefit of all RV owners.

Newmar has made this kind of protection possible, not only by building quality products, but also by demanding the same level of quality from our component manufacturers. When Newmar required them to match this 36-month pledge, everyone stepped up as expected. Now, Newmar is pleased to include these companies in our warranty - making the Newmar warranty truly complete.

The Newmar Freedom Warranty covers all components, except tires, battery and chassis (which is warranted for at least 36 months by its manufacturer).



Newmar Quality: A Way of Life.

355 N DELAWARE ST

PO BOX 30

NAPPANEE IN 46550-0030

574.773.7791 • FAX: 574.773.2895

www.newmarcorp.com

We invite you to visit our state-of-the-art production facility in Nappanee, Indiana. Plant tours are offered at 10 a.m. and 1 p.m. Monday through Friday.

Don't forget to check out the Newmar Kountry Klub. All you need for eligibility is to be a proud owner of any of the fine Newmar recreational vehicles.

Some features shown in our literature are optional. Colors and finishes are photographic representations and may appear differently when viewing actual materials. Prices, specifications, and floorplans are subject to change at Newmar's discretion without prior written notice or obligation. Please see your dealer for actual samples and specifications.

©2002 Newmar Corporation. Printed in the U.S.A. (9/06/02)

2003 **Essex**
Diesel Pusher