



2003 Newmar Mountain Aire  
CLASS A / DIESEL PUSHER



2003 Newmar Mountain Aire  
CLASS A / DIESEL PUSHER



MADP—4005 / Iris Dusk

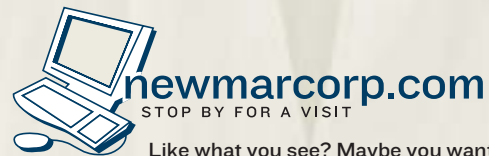


## *Mountain Aire Class A and Diesel Pusher* **FASCINATION**

It's at the heart of the human spirit — a fascination for sunset panoramas and endless horizons. The Mountain Aire is our way of saying, "Follow your dreams." This exquisite coach builds on the heritage of Newmar innovation, surrounding its occupants in luxury. And, with the chassis and power options available in the Mountain Aire Diesel Pusher, you can take the high road — effortlessly, no matter if you're chasing your dreams or just catching up with family and friends.



MADP—4005 / Iris Dusk



Like what you see? Maybe you want to learn more about who we are — to discover more about what we mean by "Newmar Quality: A Way Of Life." At [newmarcorp.com](http://newmarcorp.com), you'll find the latest updates on individual model specifications, floorplans, special packages and more. You'll also find a wealth of resources to become more familiar with our heritage, our history and our innovations.



MACA—3501 / Grand Fern





MACA—3778/Royal Blue



MADP—4007/Bisque





MOUNTAIN AIRE CLASS A / DIESEL PUSHER



*Mountain Aire Class A and Diesel Pusher*  
**ALLURE**

A compelling, irresistible pull. That's the allure of the Mountain Aire. The Mountain Aire features four new exterior colors and full-paint graphics that blend stunning strokes of color into any setting you find along your journey. And, just beneath the elegant finish lies cavernous full-basement storage and easy accessibility to service compartments. The Mountain Aire is an alluring combination of Newmar innovation and artistry, captivating from any angle.

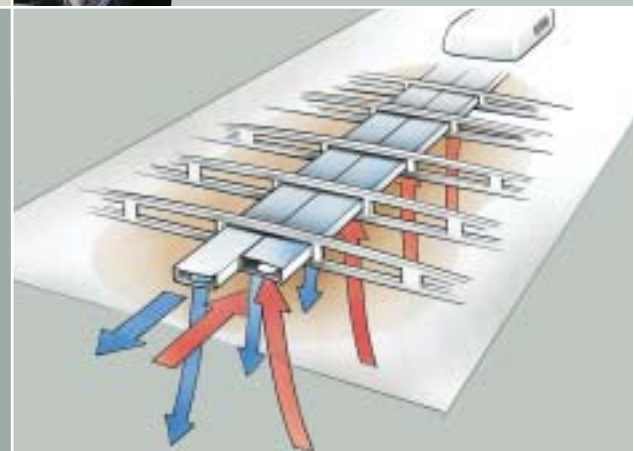
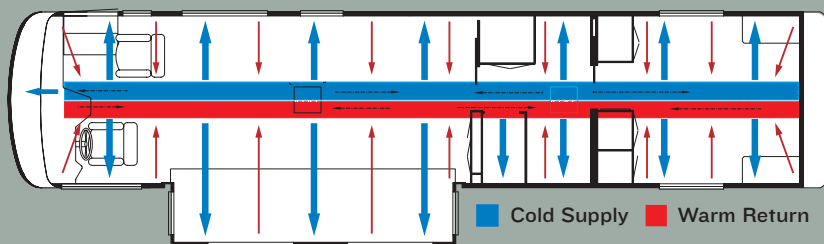


Exterior Wash Station



**NEWMAR'S TRUE CENTRAL AIR SYSTEM —**

Newmar's True Central Air utilizes not only full ducting for incoming cool air but also a separate fully ducted system to quickly and effectively remove warm air from every living area. True Central Air is standard on every Newmar.







MACA—3778 / Royal Blue



MACA—3778 / Royal Blue



## *Mountain Aire Class A* **SANCTUARY**

To experience the interior of the Mountain Aire Class A is to experience serenity. At the request of customers, and in our pursuit of continuous innovation, the Mountain Aire Class A offers several new features. Among these are five new interior décor choices, the addition of Sony® flat-screen televisions, restyled decorative mirrors and glass, two-tone dash trim, a leather-wrapped steering wheel and new front privacy drapes. Several ergonomic enhancements have refined the interior even further. The Mountain Aire Class A is a unique blend of Newmar innovation and artistry, a sanctuary that surrounds you in luxury and exemplifies Newmar comfort.



MACA—3778 / Royal Blue













*Mountain Aire Diesel Pusher*  
**ATTRACTION**

The interior of the Mountain Aire Diesel Pusher invites you in, drawing you closer to experience its beauty and luxury. Numerous refinements have enhanced the Mountain Aire Diesel Pusher for 2003. Among these are five new interior décor choices, Sony® flat-screen televisions, new-style decorative mirrors and glass, burl wood dash trim and a uniquely redesigned Corian® countertop edge. And, with ergonomic enhancements like the adjustable throttle and brake pedals, and redesigned dash, the Mountain Aire Diesel Pusher is as much a pleasure to drive, as it is to call home.



MADP—4005/Iris Dusk



MADP—4007/Bisque



MADP—4007/Bisque



## PRIDE AND TRADITION

Maybe it's in the way Newmar employees take pride in their work and assume personal responsibility for each task they perform. Maybe it's because these talented individuals build each Newmar, from the American Star Travel Trailer up to the London Aire Coach, on the same assembly line. Maybe it's because Newmar's leadership believes real quality is not found on a chart but in a way of life.

There are several things that make a Newmar special. Just like individuals, the qualities we value most are the inner ones. We build our products to reflect this way of thinking. We believe outer beauty is only worthwhile if it reflects inner quality. We back this quality with a three-year / 36,000-mile, bumper-to-bumper limited warranty, the Newmar Freedom Warranty. It's a commitment not only to our products, but also to our Newmar owners. And as with many other industry-changing innovations, Newmar was the first to offer this level of coverage, leaving the rest to follow suit. It's all about freedom — comprehensive coverage and the peace of mind that goes along with it. This is the essence of Newmar.

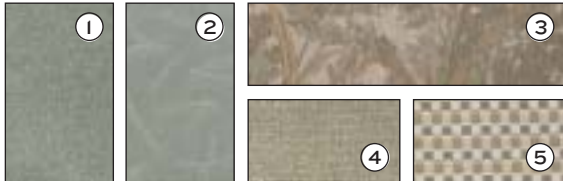




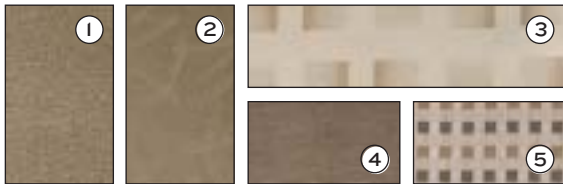


# Mountain Aire

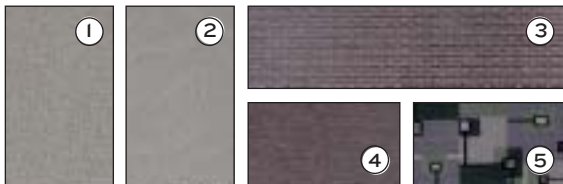
## Personal Details



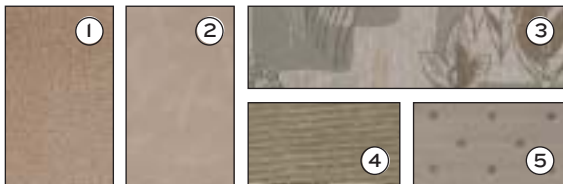
MA3-487/Grand Fern



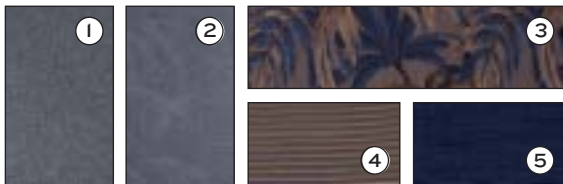
MA3-488/Bisque



MA3-489/Iris Dusk



MA3-490/Italian Straw



MA3-491/Royal Blue



Seafoam Green/Class A

Autumnwood/Class A

Orchid Marble/Class A



Arctic Blue/Class A

Grand Fern/Diesel Pusher

Iris Dusk/Diesel Pusher



Bisque/Diesel Pusher

Royal Blue/Diesel Pusher

### FULL PAINT

We pay close attention to details like surface preparation and facility cleanliness for maximum results, no matter if the job calls for a full custom paint scheme or one from our assortment of offerings. Our finishing technicians are skilled and experienced. The result is your Newmar receives an uncommonly uniform finish that is as durable as it is beautiful.

### DÉCOR

- ① Class A carpet    ② Diesel Pusher carpet    ③ sofa    ④ accent I    ⑤ accent 2

With the range of fabrics, colors and textures available in Newmar's designs, you have a broad palette of self-expression. These elements work in harmony to create a unique experience that captivates and inspires. Newmar interiors are designed to delight your senses of sight and touch, and allow you to choose an interior as individual as you are.



### BRINGING UP-TO-THE-MINUTE INFORMATION TO YOU AT THE SPEED OF LIFE. YOU'LL FIND:

- Floorplans/Specifications
- New Interior/Exterior Colors
- Standard/Optional Equipment
- Newmar Photo Gallery
- Kountry Klub Information
- Factory Tour Experience



# KONNECT

With so many impassioned Newmar owners out there, sharing the Newmar experience is only natural. We created the Kountry Klub to:

- Create an environment for friendship, fun, adventure and recreation
- Provide a forum and activities for all Newmar product owners to socialize as a group
- Streamline relations and communication between Newmar and Newmar owners

There are many benefits for our members to enjoy including the Klub magazine, rallies, caravans and special RV show events. Call 877-639-5582, or go to the Klub section of [newmarcorp.com](http://newmarcorp.com) for details on our events calendar, Klub merchandise, Klub news and more!

## EXPERIENCE THE NEWMAR FACTORY TOUR

If experience is a good teacher, let the Newmar Factory Tour experience teach you much. Feel the smooth contours of hand-finished countertops before they are set. Smell freshly sanded woods as cabinets are assembled. Take in the energy of motivated employees as they build each individual Newmar, on the same assembly line, with equal care and attention to detail. Consider yourself invited. Call 574-773-7791 for reservations and more information.



Newmar Quality: A Way of Life

NEWMAR CORPORATION  
355 N DELAWARE ST  
PO BOX 30  
NAPPANEE IN 46550-0030  
574-773-7791 Fax 574-773-2895  
[www.newmarcorp.com](http://www.newmarcorp.com)

## Newmar 2003

[www.newmarcorp.com](http://www.newmarcorp.com)

*Official Newmar Dealer:*

Some features shown in our literature are optional. Colors and finishes are photographic representations and may appear differently when viewing actual materials. Prices, specifications and floorplans are subject to change at Newmar's discretion without prior written notice or obligation. Please see your dealer for actual samples and specifications. ©2002 Newmar Corporation. Printed in the U.S.A. (8/02)



Newmar Corporation  
2003 Mountain Aire Class A & Diesel Pusher  
Specifications & Floorplans

*2003 Mountain Aire  
Class A & Diesel Pusher*



# 2003 MOUNTAIN AIRE CLASS A

## STANDARD FEATURES

### MOTORIZED CHASSIS FEATURES

- Cruise Control
- Stainless Steel Wheel Simulators
- Tilt Steering Wheel
- Workhorse W-22 Chassis

### AIR CONDITIONING & HEATING

- Two - 13,500 BTU Penguin Central Air Conditioners
- LP Leak Detector
- Dash Heater and Air Conditioner High Output

### APPLIANCES & ACCESSORIES

- 10 Gallon Gas/Electric Water Heater with Direct Spark Ignition
- Spacesaver Microwave
- Flat Screen Color TV in Dash Overhead
- Flat Screen Color TV in Bedroom
- 3-Burner Range with Glass Oven Door and Electronic Ignition
- AM/FM Dash Radio with Compact Disc Player
- Dometic® 3862 Refrigerator (8 Cubic Foot)
- Rear View Color Monitor System
- TV Antenna with Power Booster, One Exterior Jack, and Two Interior Jacks
- VCR and TV Video Selector Switch
- Cable TV Connection with RG 6 Coax
- Satellite Prep (Phone, TV Jack, and Recept)
- Trumpet Horn
- Speaker Switch System
- CB Antenna
- Driving Lights
- Interior Courtesy Lights
- TV Antenna Warning Light

### CABINETS & FURNITURE

- Flexsteel® Leather/Vinyl Front Seats with Six-Way Power, Ergo Flex Arms, and Power Lumbar
- Flexsteel® Swivel Rocker Recliner
- Flexsteel® Sofa
- Drawers with Metal Guides
- Hidden Leaf Dinette Table with Two Fixed Chairs and Two Folding Chairs
- Oak Hardwood Cabinets with Raised Panel Double Arched Doors
- Corian® Countertop in Kitchen with Color Coordinated Edge and Acrylic Sink
- Corian® Countertop in Bathroom with Porcelain Lavatory

## ELECTRICAL FEATURES

- Two-45 Amp Converters
- Battery Disconnect for House Batteries
- 6,500 Watt Generac® Generator with Remote Switch and Automatic Changeover
- 5 Watt Solar Panel to Charge Chassis Battery
- 50 Amp Electrical Service with Flexible Cord
- Emergency Engine Start Switch
- Exterior Security Lights (One Installed on Each Side)
- Lights in Exterior Storage Compartments
- Daytime Headlight System
- Lights in Wardrobes
- Solar Prep, 10 Gauge Wire from Roof to Battery Compartment
- ICC Light Flasher Switch

## EXTERIOR FEATURES

- BriteTek® Roof with 7mm Decking
- Convex Exterior Mirrors with Remote Control and Defrost
- Gel-Coated Fiberglass Exterior Sides
- Class 3, 5,000# Hitch
- Roof Rack and Ladder
- Hydraulic Leveling Jacks with Touch Manual Control
- Fully Painted Exterior Graphics with Clear Coat Finish

## INTERIOR FEATURES

- Day/Night Pleated Window Shades and Lambrequins
- Padded Vinyl Ceiling
- Simulated Plank Floor in Kitchen and Bath Areas
- Two Sink Covers
- Quilted Bedspread with Reverse Sham, Matching Bed Base, and Accent Pillow
- Hardwood Window Sill
- Sun Shade on Driver and Passenger Side Windows

## PLUMBING & BATH FEATURES

- Exterior Shower (Located on Off Door Side)
- Monitor Panel
- Sewage Holding Tank Rinse
- SeaLand® 500+ China Stool
- Fiberglass Tub/Shower with Glass Shower Door
- Water Heater Bypass System
- Demand Water System with Aquajet® ES Pump

## CONSTRUCTION FEATURES

- Aluminum Frame Sidewalls and Roof Construction, 16" On Center

- Roof R-Value Rating: 16
- Sidewall R-Value Rating: 11
- Floor R-Value Rating: 11

## WINDOWS, AWNINGS, & VENTS

- Double Pane, Tinted Safety Glass Windows
- Jalousie Window in Bedroom
- Automatic Double Entrance Door Step
- Power Vent in Bathroom with Wall Switch
- Fan-Tastic® Vent with Rain Sensor in Kitchen Area
- Skylight in Bathroom
- A&E® 9000 Side Awning
- Overhead Defrost System

## OPTIONAL FEATURES

### MOTORIZED CHASSIS FEATURES

- Polished Aluminum Wheels

### APPLIANCES & ACCESSORIES

- 30" Convection Microwave with 3-Burner Cooktop (13 lbs.)
- Norcold® Four Door Refrigerator (45 lbs.)
- Dometic® 1062 Refrigerator (10 Cubic Foot, 37 lbs.)
- Dometic® 1292 Refrigerator (12 Cubic Foot, 132 lbs.)
- U-Line IceMaker

### CABINETS & FURNITURE

- Cherry Hardwood Cabinets
- Pecan Maple Hardwood Cabinets
- Summer Maple Hardwood Cabinets

### ELECTRICAL FEATURES

- 400 Watt Inverter for Dash TV (10 lbs.)
- Roof Mounted Spotlight (3 lbs.)
- 7.0 Onan® Generator

### EXTERIOR FEATURES

- Chrome Exterior Mirrors
- Front Protective Film

### INTERIOR FEATURES

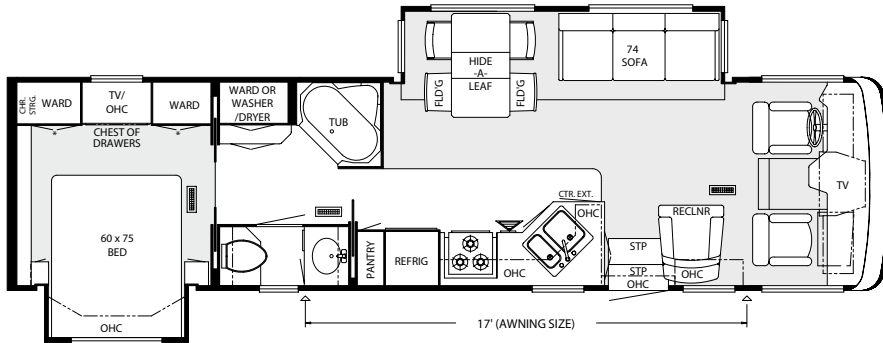
- Ceramic Floor Tile in Bath Area (75 lbs.)
- 12" Marble Look Floor Tile in Kitchen and Bath Areas

### WINDOWS, AWNINGS, & VENTS

- Driver's Side Door with Power Window

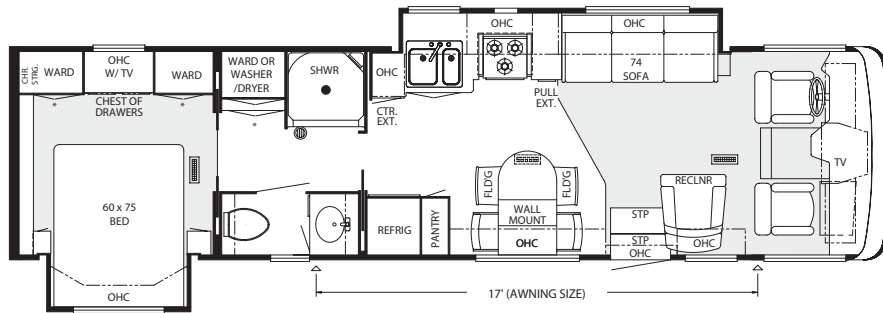


# NEWMAR SPECIFICATIONS: 2003 MOUNTAIN AIRE CLASS A



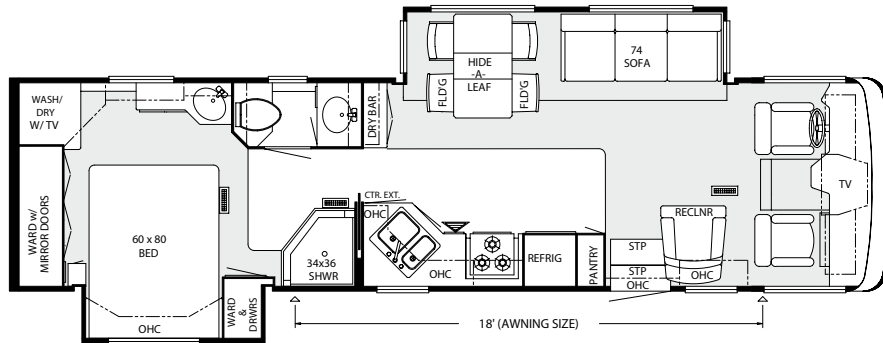
2003 Mountain Aire Class A 3501

Model	MACA 3501
APP. OVERALL LENGTH	35' 10"
WIDTH	100
APP. OVERALL HEIGHT	12' 1"
INTERIOR WIDTH	94"
INTERIOR HEIGHT	78"
GREY	50
SEWAGE	50
WATER	75
LP	32
FURNACE	35,000
WATER HEATER	10



2003 Mountain Aire Class A 3502

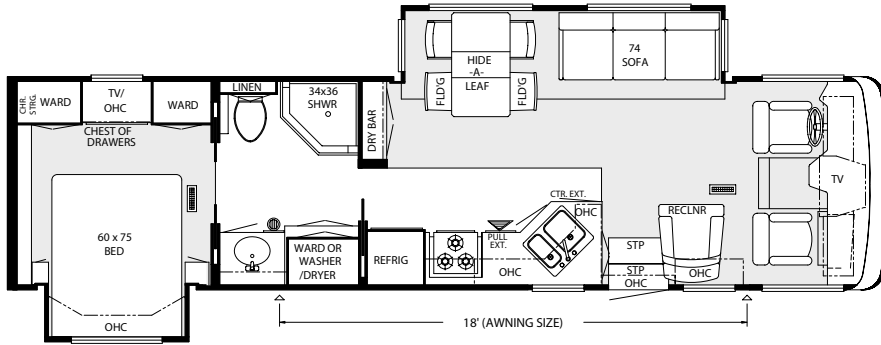
Model	MACA 3502
APP. OVERALL LENGTH	35' 10"
WIDTH	100
APP. OVERALL HEIGHT	12' 1"
INTERIOR WIDTH	94"
INTERIOR HEIGHT	78"
GREY	50
SEWAGE	50
WATER	75
LP	32
FURNACE	35,000
WATER HEATER	10



2003 Mountain Aire Class A 3503

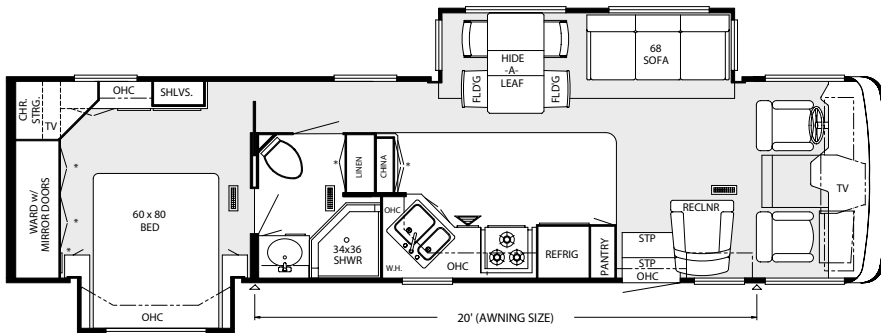
Model	MACA 3503
APP. OVERALL LENGTH	35' 10"
WIDTH	100
APP. OVERALL HEIGHT	12' 1"
INTERIOR WIDTH	94"
INTERIOR HEIGHT	78"
GREY	50
SEWAGE	50
WATER	75
LP	32
FURNACE	35,000
WATER HEATER	10

# NEWMAR SPECIFICATIONS: 2003 MOUNTAIN AIRE CLASS A



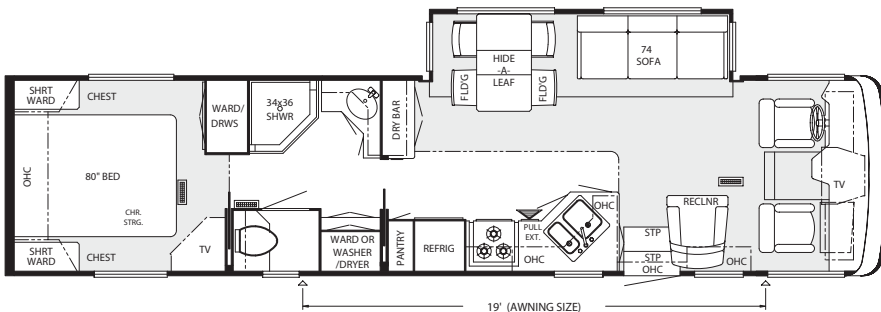
2003 Mountain Aire Class A 3560

Model	MACA 3560
APP. OVERALL LENGTH	35' 10"
WIDTH	100
APP. OVERALL HEIGHT	12' 1"
INTERIOR WIDTH	94"
INTERIOR HEIGHT	78"
GREY	50
SEWAGE	50
WATER	75
LP	32
FURNACE	35,000
WATER HEATER	10



2003 Mountain Aire Class A 3651

Model	MACA 3651
APP. OVERALL LENGTH	37' 2"
WIDTH	100
APP. OVERALL HEIGHT	12' 1"
INTERIOR WIDTH	94"
INTERIOR HEIGHT	78"
GREY	50
SEWAGE	50
WATER	75
LP	32
FURNACE	42,000
WATER HEATER	10

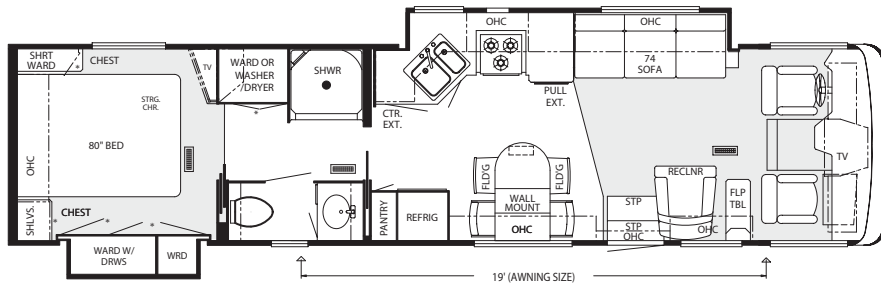


2003 Mountain Aire Class A 3704

Model	MACA 3704
APP. OVERALL LENGTH	38' 1"
WIDTH	100
APP. OVERALL HEIGHT	12' 1"
INTERIOR WIDTH	94"
INTERIOR HEIGHT	78"
GREY	50
SEWAGE	50
WATER	75
LP	32
FURNACE	42,000
WATER HEATER	10

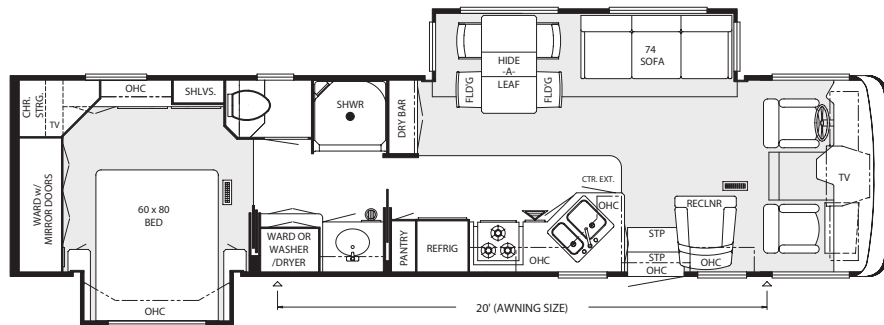


# NEWMAR SPECIFICATIONS: 2003 MOUNTAIN AIRE CLASS A



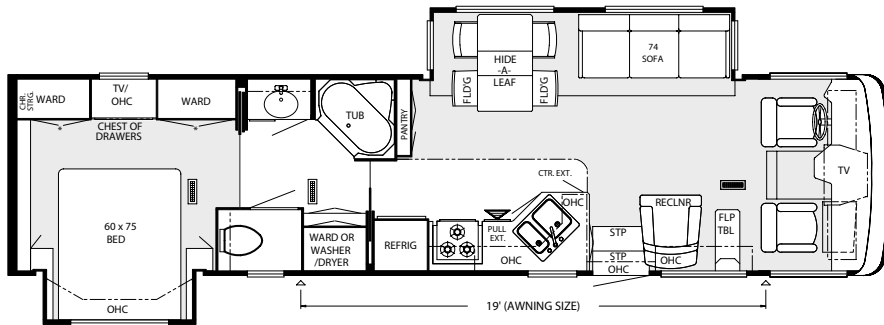
2003 Mountain Aire Class A 3776

Model	MACA 3776
APP. OVERALL LENGTH	37' 11"
WIDTH	100
APP. OVERALL HEIGHT	12' 1"
INTERIOR WIDTH	94"
INTERIOR HEIGHT	78"
GREY	50
SEWAGE	50
WATER	75
LP	32
FURNACE	42,000
WATER HEATER	10



2003 Mountain Aire Class A 3778

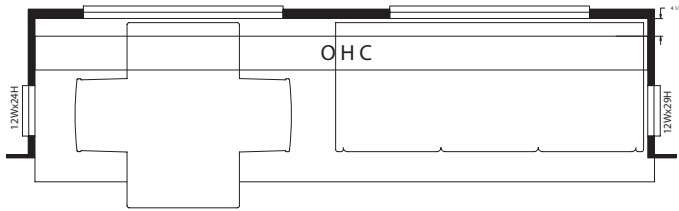
Model	MACA 3778
APP. OVERALL LENGTH	37' 11"
WIDTH	100
APP. OVERALL HEIGHT	12' 1"
INTERIOR WIDTH	94"
INTERIOR HEIGHT	78"
GREY	50
SEWAGE	50
WATER	75
LP	32
FURNACE	42,000
WATER HEATER	10



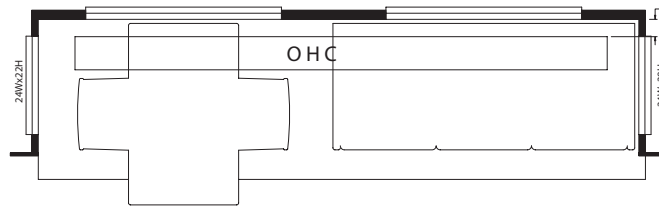
2003 Mountain Aire Class A 3781

Model	MACA 3781
APP. OVERALL LENGTH	37' 11"
WIDTH	100
APP. OVERALL HEIGHT	12' 1"
INTERIOR WIDTH	94"
INTERIOR HEIGHT	78"
GREY	50
SEWAGE	50
WATER	75
LP	32
FURNACE	42,000
WATER HEATER	10

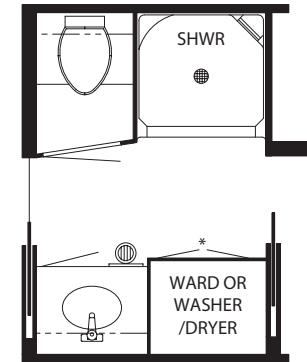
## FLOORPLAN OPTIONS: 2003 MOUNTAIN AIRE CLASS A



<b>Option K820</b>	<b>Overhead Cabinet in Slide Out</b>
	MACA: 3501, 3503, 3560, 3704, 3778, 3781



<b>Option K290</b>	<b>Overhead Cabinet in Slide Out</b>
	MACA: 3501, 3503, 3560, 3651, 3704, 3778, 3781



<b>Option P300</b>	<b>Enclosed Stool Room</b>
	MACA: 3560

## CHASSIS SPECIFICATIONS: 2003 MOUNTAIN AIRE CLASS A WORKHORSE CHASSIS INFORMATION

NAME			ENGINE HP	AXLE RATIO	FUEL CAP.	WHEEL BASE	*FRONT GAWR	*REAR GAWR	*GVWR	*GCWR	APP. UVW	APP. NCC
MA	CA	3501	340	5.38	75	228	8,500	14,500	22,000	26,000	18,736	3,264
MA	CA	3502	340	5.38	75	228	8,500	14,500	22,000	26,000	18,750	3,250
MA	CA	3503	340	5.38	75	228	8,500	14,500	22,000	26,000	18,885	3,115
MA	CA	3560	340	5.38	75	228	8,500	14,500	22,000	26,000	18,770	3,230
MA	CA	3651	340	5.38	75	242	8,500	14,500	22,000	26,000	19,225	2,775
MA	CA	3704	340	5.38	75	242	8,500	14,500	22,000	26,000	19,043	2,957
MA	CA	3776	340	5.38	75	242	8,500	14,500	22,000	26,000	19,280	2,720
MA	CA	3778	340	5.38	75	242	8,500	14,500	22,000	26,000	19,420	2,580
MA	CA	3781	340	5.38	75	242	8,500	14,500	22,000	26,000	19,300	2,700

Lengths, Heights, Widths, and Dry Weights are approximate. Weight will vary based on optional equipment added to the above base weight.

GAWR: Gross Axle Weight Rating is the maximum permissible weight for an axle.

GVWR: Gross Vehicle Weight Rating is the maximum permissible weight of a fully loaded motorhome.

GCWR: Gross Combination Weight Rating is the value specified by the manufacturer of the vehicle as the maximum allowable loaded weight of this motorhome and any towed trailer or towed vehicle.

UVW: Unloaded Vehicle Weight is the weight of this motorhome as built at the factory with full fuel, engine oil, and coolants. The UVW does not include cargo, fresh water, LP gas, or dealer installed accessories.

NCC: Net Carrying Capacity is the maximum weight of all occupants, including the driver, personal belongings, food, fresh water, waste water, LP gas, tools, tongue weight of towed vehicle, dealer installed accessories, etc., that can be carried by the motorhome.

\* Specifications supplied by chassis manufacturer.



# 2003 MOUNTAIN AIRE DIESEL PUSHER

## STANDARD FEATURES

### MOTORIZED CHASSIS FEATURES

- Cruise Control
- Anti Lock Braking System
- Tilt and Telescope Steering Wheel
- Polished Aluminum Wheels
- Recessed Fuel Fills with Cross Over To Fill From Either Side
- Freightliner Chassis
- Adjustable Brake and Gas Pedals

### AIR CONDITIONING & HEATING

- Two - 15,000 BTU Penguin Heat Pump Central Air Conditioners
- LP Leak Detector
- Dash Heater and Air Conditioner High Output

### APPLIANCES & ACCESSORIES

- 10 Gallon Gas/Electric Water Heater with Direct Spark Ignition
- 30" Convection Microwave
- Flat Screen Color TV in Dash Overhead
- Flat Screen Color TV in Bedroom
- 3-Burner Recessed Cooktop with Electronic Ignition
- AM/FM Dash Radio with Combination Rear View Color Monitor System
- Remote 8 Disc CD Changer for Dash Radio
- Dometic® 1062 Refrigerator with Icemaker (10 Cubic Foot)
- TV Antenna with Power Booster, One Exterior Jack, and Two Interior Jacks
- VCR and TV Video Selector Switch
- Cable TV Connection with RG 6 Coax
- Satellite Prep (Phone, TV Jack, and Recept)
- Washer/Dryer Prep for Compact Washer/Dryer
- Air Horns
- Safe
- Speaker Switch System
- CB Antenna
- TV Antenna Warning Light
- Driving Lights
- Interior Courtesy Lights

### CABINETS & FURNITURE

- Flexsteel® Leather/Vinyl Front Seats with Eight-Way Power, Power Lumbar, and Heat
- Flexsteel® Leather/Vinyl Push Back Recliner with Ottoman
- Flexsteel® Sofa
- Drawers with Metal Guides
- Dinette Table with Corian® Insert Top and Four Chairs
- Oak Hardwood Cabinets with Raised Panel Double Arched Doors
- Corian® Countertop in Kitchen with Integrated Sink Bowls
- Corian® Lavatory Countertop in Bathroom with Integrated Bowl

## ELECTRICAL FEATURES

- Two-45 Amp Converters
- Battery Disconnect for House Batteries
- 8.0 PowerTech® Diesel Quiet Series Generator on Slides with Automatic Changeover
- 5 Watt Solar Panel to Charge Chassis Battery
- 50 Amp Electrical Service with Flexible Cord
- Emergency Engine Start Switch
- Exterior Security Lights (One Installed on Each Side)
- Lights in Exterior Storage Compartments
- Daytime Headlight System
- Lights in Wardrobes
- Solar Prep, Wire from Roof to Battery Compartment
- ICC Light Flasher Switch
- Four 6 Volt House Batteries on Pull Out Tray
- Recessed Docking Lights

## EXTERIOR FEATURES

- BriteTek® Roof with 7mm Decking
- Convex Exterior Chrome Mirrors with Remote Control and Defrost
- Gel-Coated Fiberglass Exterior Sides
- Class 5, 10,000# Hitch
- Hydraulic Leveling Jacks with Automatic Control and Air Dump
- Fully Painted Exterior Graphics with Clear Coat Finish

## INTERIOR FEATURES

- Lined Day/Night Pleated Window Shades and Lambrequins
- Padded Vinyl Ceiling
- Mood Lights Recessed in Ceiling
- Quilted Bedspread with Reverse Sham, Matching Bed Base, and Accent Pillow
- Simulated Plank Floor in Kitchen and Bath Areas
- Two Sink Covers
- Luxurious Pillow Top Mattress
- Sun Shade on Driver and Passenger Side Windows

## PLUMBING & BATH FEATURES

- Exterior Convenience Wash Station with Hot/Cold Water, Soap Dispenser, and Towel Dispenser
- Monitor Panel
- Sewage Holding Tank Rinse
- Thetford® Aria Sculptured China Stool
- Fiberglass Tub/Shower with Glass Shower Door
- Water Heater Bypass System
- Demand Water System with Aquajet® ES Pump
- Automatic Rewind Water Hose Reel
- Water Filter with Drink Dispenser at Kitchen Sink

## CONSTRUCTION FEATURES

- Aluminum Frame Sidewalls and Roof Construction, 16" On Center
- Roof R-Value Rating: 16
- Sidewall R-Value Rating: 11
- Floor R-Value Rating: 12

## WINDOWS, AWNINGS, & VENTS

- Double Pane, Tinted Safety Glass Windows
- Automatic Double Entrance Door Step
- Fan-Tastic® Vent with Rain Sensor in Kitchen and Bathroom
- Skylight in Bathroom
- A&E® 9000 Side Awning
- Front Entry Door with Power Flush Stepwell Cover
- Driver's Side Power Window

## OPTIONAL FEATURES

### AIR CONDITIONING & HEATING

- Hydronic Zone Heating System

### APPLIANCES & ACCESSORIES

- Norcold® Four Door Refrigerator with Icemaker (45 lbs.)
- Dometic® 1292 Refrigerator (12 Cubic Foot, 132 lbs.)
- Compact Washer/Dryer (185 lbs.)
- Navigation System Displayed on Rear View Monitor Screen (8 lbs.)
- U-Line Icemaker (57 lbs.)
- Bose 3-2-1 System, DVD/CD Player, and Subwoofer
- External Entertainment Center with Flat Screen TV and AM/FM CD Radio

### CABINETS & FURNITURE

- Cherry Hardwood Cabinets
- Pecan Maple Hardwood Cabinets
- Summer Maple Hardwood Cabinets

### ELECTRICAL FEATURES

- Trace® 2000 Watt Inverter (50 lbs.)
- Roof Mounted Spotlight (3 lbs.)
- Automatic Generator Start

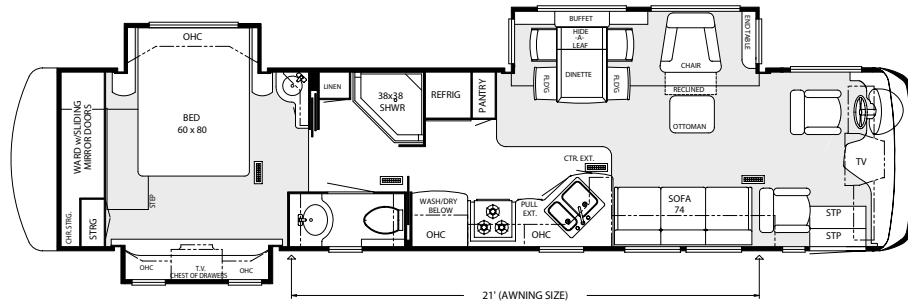
### EXTERIOR FEATURES

- Front Protective Film
- Gel-Coated Fiberglass Roof with 1/4" Foam Insulation

### INTERIOR FEATURES

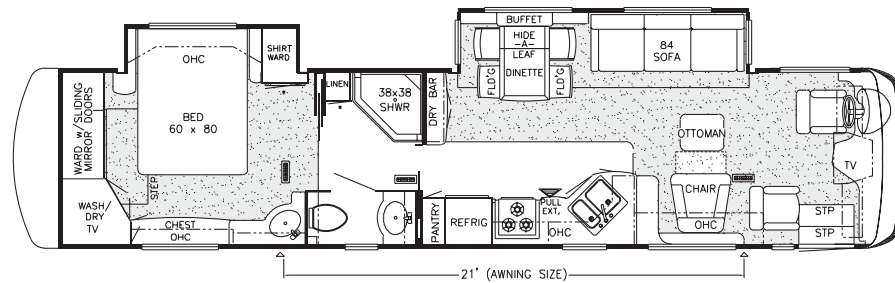
- Ceramic Floor Tile in Kitchen and Bath Areas (110 lbs.)
- 12" Marble Look Floor Tile in Kitchen and Bath Areas
- Ceramic Floor Tile in Between Driver and Passenger Seats (80 lbs.)

# NEWMAR SPECIFICATIONS: 2003 MOUNTAIN AIRE DIESEL PUSHER



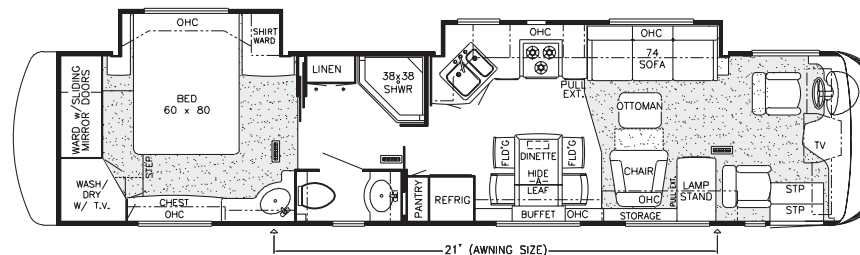
2003 Mountain Aire Diesel Pusher 4003

Model	MADP 4003
APP. OVERALL LENGTH	40' 8"
WIDTH	100
APP. OVERALL HEIGHT	12' 1"
INTERIOR WIDTH	94"
INTERIOR HEIGHT	78"
GREY	65
SEWAGE	45
WATER	105
LP	32
FURNACE	42,000
WATER HEATER	10



2003 Mountain Aire Diesel Pusher 4005

Model	MADP 4005
APP. OVERALL LENGTH	40' 8"
WIDTH	100
APP. OVERALL HEIGHT	12' 1"
INTERIOR WIDTH	94"
INTERIOR HEIGHT	78"
GREY	65
SEWAGE	45
WATER	105
LP	32
FURNACE	42,000
WATER HEATER	10

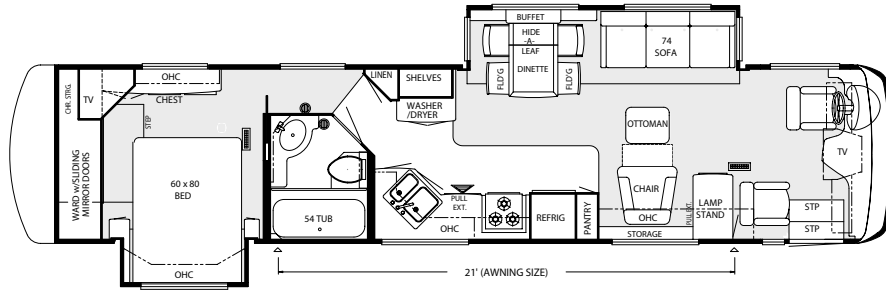


2003 Mountain Aire Diesel Pusher 4007

Model	MADP 4007
APP. OVERALL LENGTH	40' 8"
WIDTH	100
APP. OVERALL HEIGHT	12' 1"
INTERIOR WIDTH	94"
INTERIOR HEIGHT	78"
GREY	65
SEWAGE	45
WATER	105
LP	32
FURNACE	42,000
WATER HEATER	10

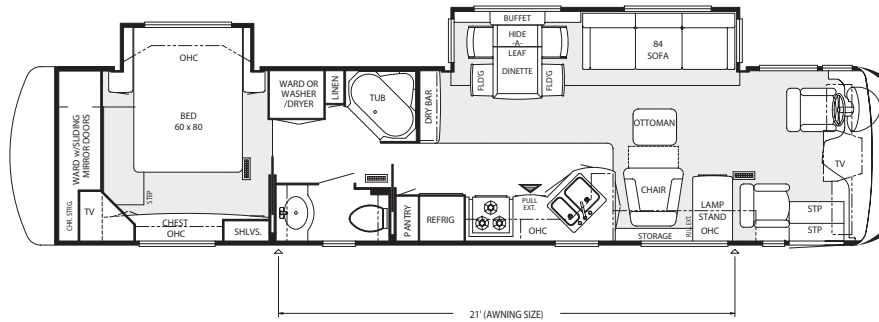


# NEWMAR SPECIFICATIONS: 2003 MOUNTAIN AIRE DIESEL PUSHER



2003 Mountain Aire Diesel Pusher 4064

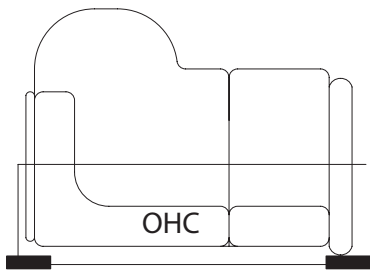
Model	MADP 4064
APP. OVERALL LENGTH	40' 8"
WIDTH	100
APP. OVERALL HEIGHT	12' 1"
INTERIOR WIDTH	94"
INTERIOR HEIGHT	78"
GREY	65
SEWAGE	45
WATER	105
LP	32
FURNACE	42,000
WATER HEATER	10



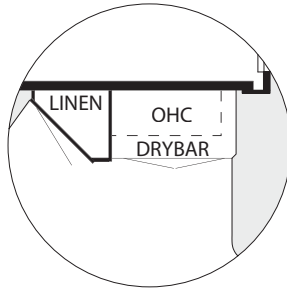
2003 Mountain Aire Diesel Pusher 4097

Model	MADP 4097
APP. OVERALL LENGTH	40' 8"
WIDTH	100
APP. OVERALL HEIGHT	12' 1"
INTERIOR WIDTH	94"
INTERIOR HEIGHT	78"
GREY	65
SEWAGE	45
WATER	105
LP	32
FURNACE	42,000
WATER HEATER	10

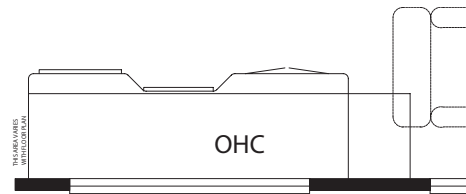
## FLOORPLAN OPTIONS: 2003 MOUNTAIN AIRE DIESEL PUSHER



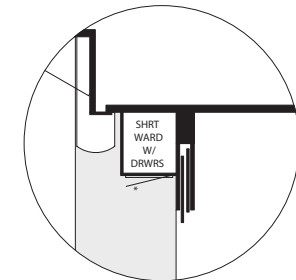
<b>Option K140</b>	<b>58" L-Sofa</b> MADP: 4005
--------------------	---------------------------------



<b>Option K211</b>	<b>Dry Bar</b> MADP: 4064
--------------------	------------------------------

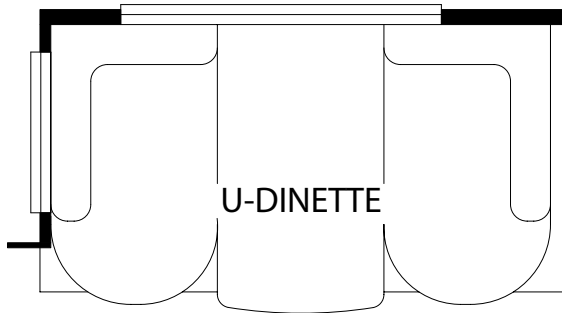


<b>Option K235</b>	<b>61" Desk</b> MADP: 4003, 4007, 4064, 4097
--------------------	---

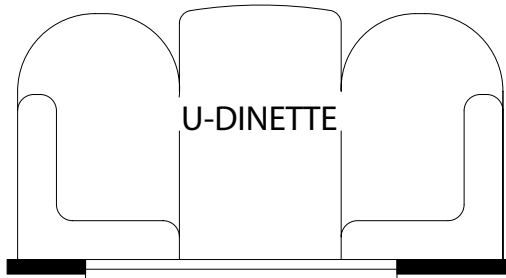


<b>Option K281</b>	<b>Shirt Ward with Drawers</b> MADP: 4003
--------------------	--

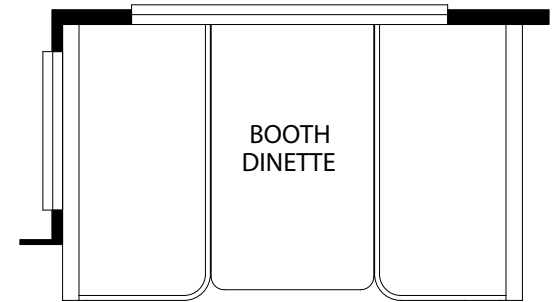
# FLOORPLAN OPTIONS: 2003 MOUNTAIN AIRE DIESEL PUSHER



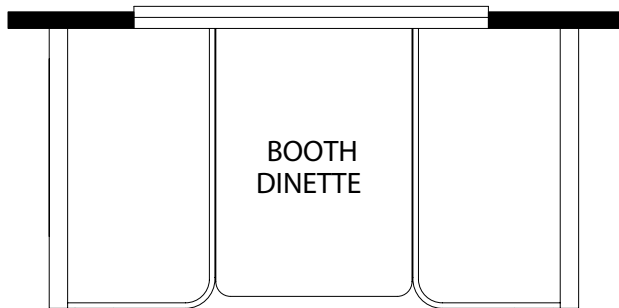
<b>Option K422</b>	<b>U-Dinette</b>
	MADP: 4003, 4005, 4064, 4097



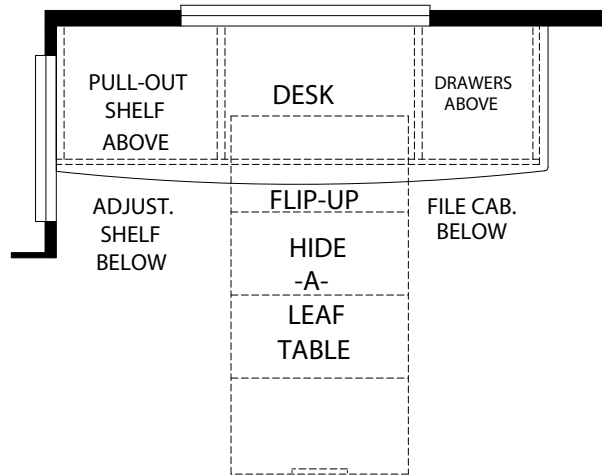
<b>Option K422A</b>	<b>U-Dinette</b>
	MADP: 4007



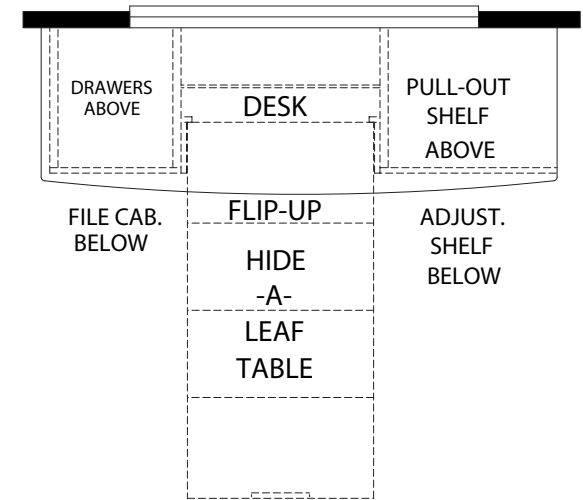
<b>Option K420</b>	<b>Booth Dinette</b>
	MADP: 4003, 4005, 4064, 4097



<b>Option K421</b>	<b>Booth Dinette</b>
	MADP: 4007



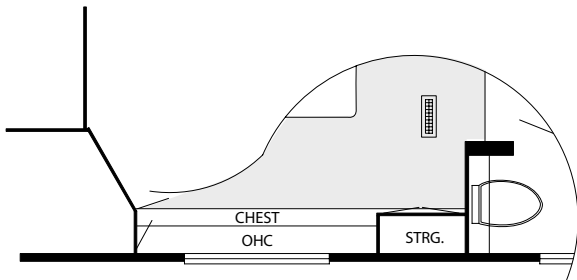
<b>Option K122</b>	<b>Dinette Computer Station Combo</b>
	MADP: 4003, 4005, 4064, 4097



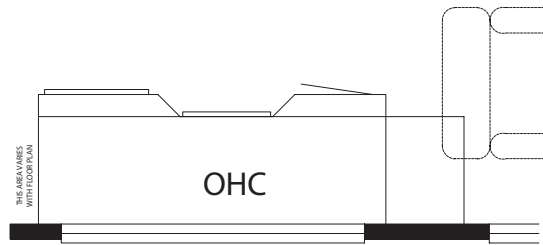
<b>Option K122A</b>	<b>Dinette Computer Station Combo</b>
	MADP: 4007



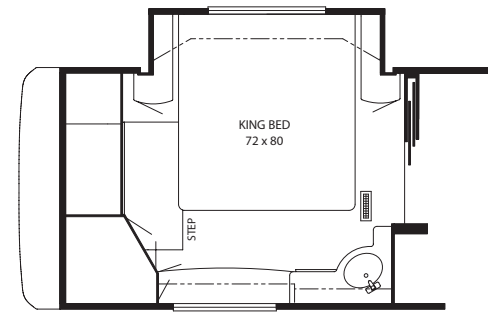
# FLOORPLAN OPTIONS: 2003 MOUNTAIN AIRE DIESEL PUSHER



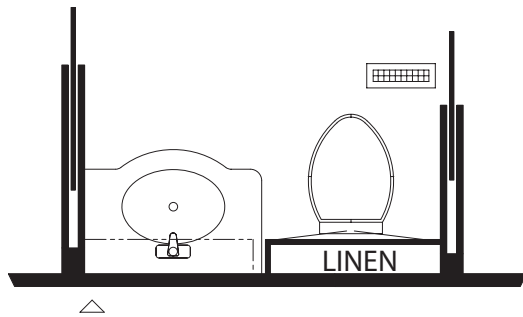
<b>Option K280</b>	<b>Dresser Ctr. With Storage Tower</b>
	MADP: 4005, 4007



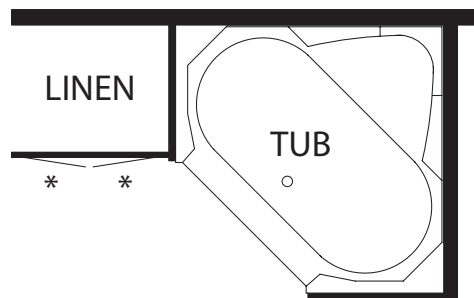
<b>Option K326</b>	<b>53" Desk</b>
	MADP: 4005



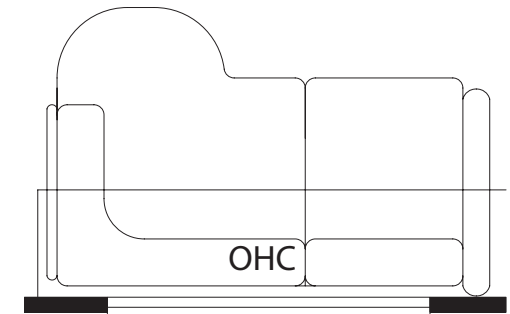
<b>Option K630</b>	<b>King Bed</b>
	MADP: 4005, 4007



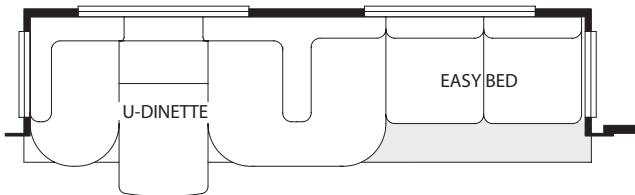
<b>Option P260</b>	<b>Open Stool Room</b>
	MADP: 4097



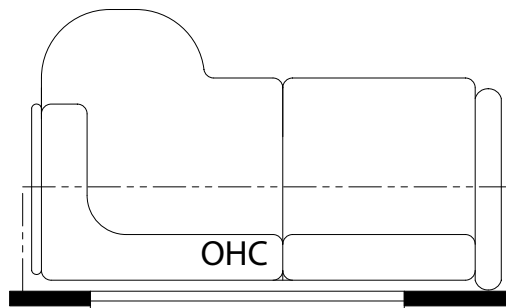
<b>Option P370</b>	<b>Corner Tub</b>
	MADP: 4007



<b>Option K910</b>	<b>66" L-Sofa with Incliner</b>
	MADP: 4007, 4097



<b>Option K800</b>	<b>U-Dinette &amp; Sofa Combo</b>
	MADP: 4005, 4097



<b>Option K915</b>	<b>72" L-Sofa with Incliner</b>
	MADP: 4003, 4064

# CHASSIS SPECIFICATIONS: 2003 MOUNTAIN AIRE DIESEL PUSHER

## FREIGHTLINER CHASSIS INFORMATION

NAME		ENGINE HP	AXLE RATIO	FUEL CAP.	WHEEL BASE	*FRONT GAWR	*REAR GAWR	*GVWR	*GCWR	APP. UVW	APP. NCC	
MA	DP	4003	400	4.63	150	276	14,000	19,000	33,000	43,000	27,105	5,895
MA	DP	4005	400	4.63	150	276	14,000	19,000	33,000	43,000	25,875	7,125
MA	DP	4007	400	4.63	150	276	14,000	19,000	33,000	43,000	26,735	6,265
MA	DP	4064	400	4.63	150	276	14,000	19,000	33,000	43,000	26,513	6,487
MA	DP	4097	400	4.63	150	276	14,000	19,000	33,000	43,000	26,450	6,550

## SPARTAN CHASSIS INFORMATION

NAME		ENGINE HP	AXLE RATIO	FUEL CAP.	WHEEL BASE	*FRONT GAWR	*REAR GAWR	*GVWR	*GCWR	APP. UVW	APP. NCC	
MA	DP	4003	400	4.63	150	276	13,700	20,000	33,700	43,700	27,115	6,585
MA	DP	4005	400	4.63	150	276	13,700	20,000	33,700	43,700	26,975	7,725
MA	DP	4007	400	4.63	150	276	13,700	20,000	33,700	43,700	26,835	6,865
MA	DP	4064	400	4.63	150	276	13,700	20,000	33,700	43,700	26,807	6,893
MA	DP	4097	400	4.63	150	276	13,700	20,000	33,700	43,700	26,460	7,240

Lengths, Heights, Widths, and Dry Weights are approximate. Weight will vary based on optional equipment added to the above base weight.

GAWR: Gross Axle Weight Rating is the maximum permissible weight for an axle.

GVWR: Gross Vehicle Weight Rating is the maximum permissible weight of a fully loaded motorhome.

GCWR: Gross Combination Weight Rating is the value specified by the manufacturer of the vehicle as the maximum allowable loaded weight of this motorhome and any towed trailer or towed vehicle.

UVW: Unloaded Vehicle Weight is the weight of this motorhome as built at the factory with full fuel, engine oil, and coolants. The UVW does not include cargo, fresh water, LP gas, or dealer installed accessories.

NCC: Net Carrying Capacity is the maximum weight of all occupants, including the driver, personal belongings, food, fresh water, waste water, LP gas, tools, tongue weight of towed vehicle, dealer installed accessories, etc., that can be carried by the motorhome.

\* Specifications supplied by chassis manufacturer.











**3-36**

## **Newmar Freedom Warranty™**

The Newmar Freedom Warranty simply and clearly details the most impressive coverage in the industry. Three years or 36,000 miles, whichever comes first. Bumper to bumper. It's a symbol of our uncompromising pursuit of quality.

Newmar takes great pride in ensuring our owners have made the right choice. It's yet another way of reinforcing Newmar's commitment to the customer, and a challenge to the rest of the industry to raise its standards for the benefit of all RV owners.

Newmar has made this kind of protection possible, not only by building quality products, but also by demanding the same level of quality from our component manufacturers. When Newmar required them to match this 36-month pledge, everyone stepped up as expected. Now, Newmar is pleased to include these companies in our warranty - making the Newmar warranty truly complete.

The Newmar Freedom Warranty covers all components, except tires, battery and chassis (which is warranted for at least 36 months by its manufacturer).



Newmar Quality: A Way of Life.

355 N DELAWARE ST

PO BOX 30

NAPPANEE IN 46550-0030

574.773.7791 • FAX: 574.773.2895

[www.newmarcorp.com](http://www.newmarcorp.com)

We invite you to visit our state-of-the-art production facility in Nappanee, Indiana. Plant tours are offered at 10 a.m. and 1 p.m. Monday through Friday.

Don't forget to check out the Newmar Kountry Klub. All you need for eligibility is to be a proud owner of any of the fine Newmar recreational vehicles.

Some features shown in our literature are optional. Colors and finishes are photographic representations and may appear differently when viewing actual materials. Prices, specifications, and floorplans are subject to change at Newmar's discretion without prior written notice or obligation. Please see your dealer for actual samples and specifications.

©2002 Newmar Corporation. Printed in the U.S.A. (9/17/02)

*2003 Mountain Aire  
Class A & Diesel Pusher*