

Storm



2004

Explore Storm's Features and Benefits.

New for 2004 STORM is built on the "POWER PLATFORM"!

New for 2004 the 34 F Model — TRIPLE SLIDE coach at an incredible price.

Denso Dash A/C System — Approximately 17,000 BTU's of cooling ability.

Windshield Bonded to Fiberglass — Bonded to our molded fiberglass front cap for precision in manufacturing, longevity and reliability.

EZ STORE™ Slide-Out Storage system — Storage compartments mounted under the slide make it easy to get at your cargo when you are parked. No more crawling under the slide to get at your gear.

Laminated Slide-Out Luggage Boxes — Aluminum Framed and fully insulated. Manufactured with our patented "VACU-BOND" lamination process, which offers superior strength and noise reduction.

Outstanding Exterior Styling — Our Molded fiberglass front and rear caps create a very "HIGH-END" look in a Class A gas coach.

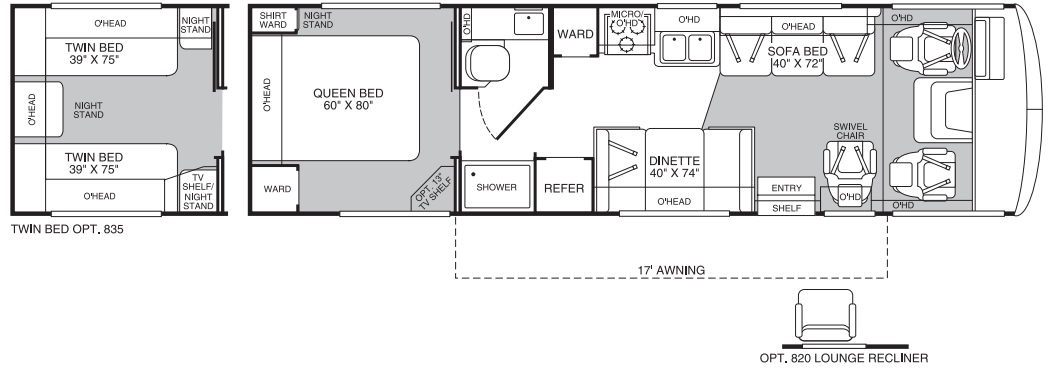
Flexsteel Furniture — Built by a well-known, quality furniture manufacturer. With significantly more "namebrand" appeal than our competitors.

Rear Fuel Fill — Ease of operation when fueling... no more "what side is it on?."

By Fleetwood — a name you know, a name you trust.

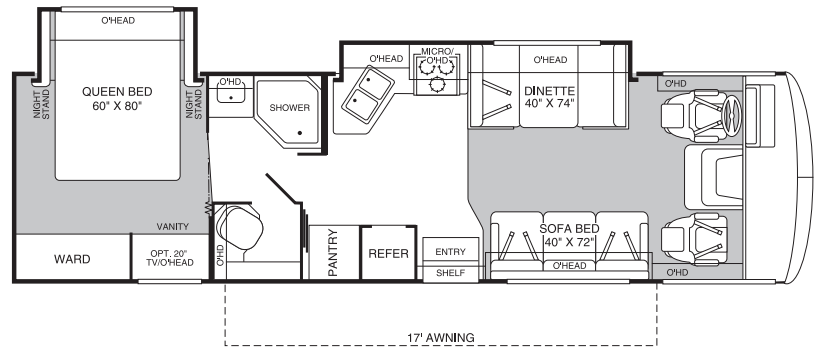
Model 30H

- Island Queen Bed
- Optional Twin Beds
- Split Bathroom
- Dinette
- Sofa Bed
- Swivel Chair



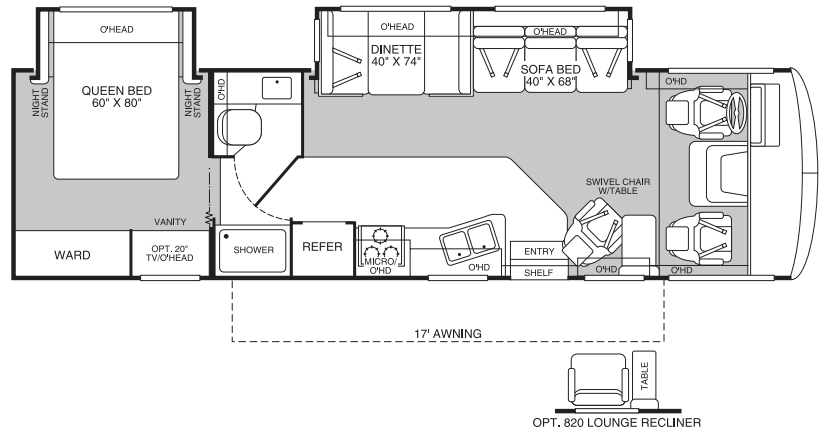
Model 31A

- 30" Deep Bedroom Slide-Out with Island Queen Bed
- Bedroom Feature Cabinets with Dresser and Integrated Vanity
- Spacious Pantry
- Private Toilet
- Galley/Dinette Slide-Out
- Sofa Bed



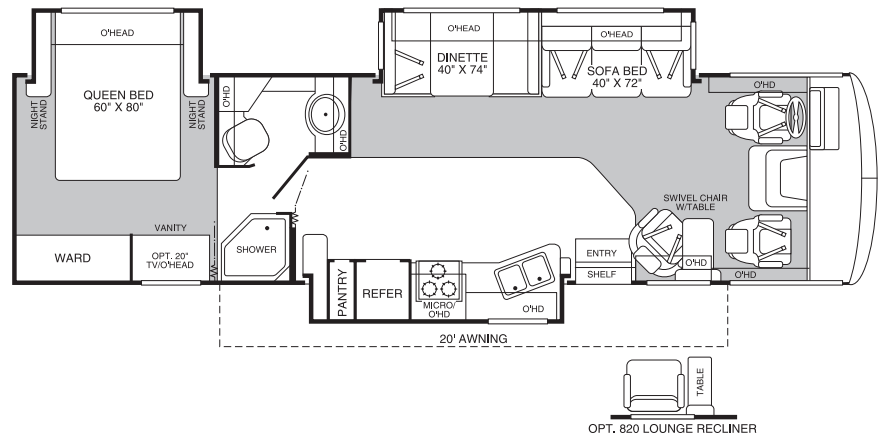
Model 31W

- Bedroom Feature Cabinets with Integrated Vanity
- Living Room Slide-Out with Sofa Bed and Dinette
- Swivel Chair with Table



Model 34F

- Triple Slide Floor Plan
- 30" Deep Bedroom Slide-Out
- Garden Shower with Glass Enclosure
- Large Pantry
- Living Room Slide-Out with Sofa Bed and Dinette
- Swivel Chair with Table



Standard Features

Appliances

- Front 27" Panasonic® Stereo TV in Overhead
- Video Control Center
- Smoke Detector/Alarm
- LP Gas Detector/Alarm
- CO Detector/Alarm
- 34,000 BTU Furnace (30,000/20,000 BTU on 34F)
- 6-Gallon, Quick-Recovery Water Heater with D.S.I.
- 3-Burner, High-Output Range w/Oven
- Light/Power Range Hood
- Monitor Panel
- Folding Range Cover
- Roof A/C High Efficiency w/Solar Panel (Dual A/C on 34F)
- Water Heater Bypass System
- Marine Toilet
- Toilet Tank San-T-Flush™ System
- 1.0-cu. ft. Microwave
- 8-cu. ft. Dometic® Double Door Refrigerator
- Single-Lever Galley Faucet
- Demand Water Pump with Filter
- TV Antenna
- Fan-Tastic® Power Roof Vent—Galley
- Fire Extinguisher
- Telephone Jack in Dash and Bedroom
- Rear Speakers in Bedroom

Body Structure

- Vacu-bond® Upper/Lower Floors
- Vacu-bond® Walls with Smooth High-Gloss Exterior Fiberglass
- Radius Roof with Ducted A/C
- Royal Tuff-Ply™ Roof
- Aluminum Interlocking Floor/Wall/Ceiling Framing

Electrical

- Dual Patio Receptacles
- 120V/12V AC/DC Converter
- Central Electrical Panel
- 3-Way Water Pump Switch
- 4.0kW Onan® Generator (Select Models Only)
- 5.5kW Onan® Generator (34F Only)
- 30-amp Service
- Wall Switches
- Electronic Climate Control Systems (34F)
- Dual 6V/Deep-Cycle 218-amp House Batteries

Exterior

- Fiberglass Front/Rear Cap
- ABS Wheel Trims
- Entry Door with Deadbolt Latch
- Awning
- Utility Compartment with Exterior Shower
- 4-Point Automatic Electric Levelers (Not Available on 30H)
- Roof Ladder
- Remote Heated Rear View Mirrors
- Spare Tire
- Park Cable Receptacle
- Awning Rail/Drip Molding (Both Sides)
- Power Entry Step
- Dual Battery Charge Control
- Porch Light
- 3 Colorway Graphics to Match Decor

Exterior Automotive

- Large, Curved Aerodynamic Bonded in Windshield
- Undercoating
- Wheel Simulators
- Valve Extenders
- Steel Surface on Bulkhead
- Trailer Hitch with 7-Point Electrical Hook-Up*
- Large Headlamps

- Single Motor Windshield Wipers with Wet Arm
- Mud Flaps

Exterior Storage

- Insulated Aluminum Luggage Doors
- Single-Paddle/Metal Latches
- Continuous One-Piece Bulb Seal
- Hidden, Stainless Steel Latch Rods
- Hidden Lift Strut Supports
- Lighted Compartments
- Rotomolded Compartments

Interior

- 3 Interior Decors
- Skylight in Tub/Shower
- Plush Wall-to-Wall Carpet w/Carpet Pad
- Wood Drawers
- Roller Guide Drawer Slides with Transit Ship Locks
- Radius Corner Cabinetry
- Coordinated Cabinet Hardware
- Pleated Shades
- Bedspread with Decor Pillows
- Restonic® Innerspring Mattress
- Solid Surface Edging—Galley
- Vinyl Flooring in Galley & Bath
- Hardwood Bath Door/Trims
- Trash Basket in Galley
- Molded Tub/Shower Enclosure
- Coordinated Bath Accessories
- Residential Seat Styling
- Entry Rail
- Raised-Panel Cabinet Doors
- Flat Panel Base Cabinet Doors
- Adjustable Cabinet Shelves (Selected Cabinets)
- Solid Divider Doors
- Large, Double Stainless Steel Sink in Galley

Interior Automotive

- Intermittent Wiper Control
- Double Swivel Sun Visors w/Map Pockets
- Cruise Control
- AM/FM/CD Radio
- Auxiliary Start Circuit
- Battery Shut-Off Switch
- Auto A/C Heater Combo
- Radio Switch—Main/Auxiliary Power
- Soft-Surface Automotive Dash
- Driver/Passenger Captain's Chairs with Reclining Back/Slide Controls
- Low Profile Engine Cover
- Tilt Steering Wheel
- 3-Point Seat Belts on Driver/Passenger Seats

Interior Lighting

- Map Lights (Driver and Passenger)
- Decor Lighting (Bedroom)
- Incandescent Lighting
- Bedroom Lighting

Platform Construction

- Basement Floor Configuration
- Heated Water & Holding Tank Compartments
- Polyethylene Luggage Compartment Boxes
- EZ-Store™ Compartment on Living Area Slide-Outs
- Power Platform
- Coach Vibration Isolators

Optional Features

- Rear Television
- DSS Manual Lift/Digital Image
- DVD/VCR Combo
- Ultraleather™ (Driver and Passenger Seats)
- Dual Glazed Windows
- Stereo with AM/FM/CD/Cassette
- 5 kW Generator Upgrade w/ECC and Dual A/C's (30H, 31A and 31W Only)
- Lounge Recliner
- Rear Vision Camera

Specifications

FORD® CHASSIS	30H	31A	31W	34F
Engine LD	N/A	6.8L	6.8L	6.8L
Wheelbase	N/A	208"	208"	228"
GVWR lbs (1)	N/A	20,500	20,500	22,000
Front GAWR (lbs) (2)	N/A	7,000	7,000	7,500
Rear GAWR (lbs) (2)	N/A	13,500	13,500	14,500
Base Weight (lbs) (3)	N/A	15,950	15,950	17,150
GCWR (lbs) (4)	N/A	25,500	25,500	26,000
Hitch Rating (lbs)*	N/A	5,000	5,000	5,000
Tongue Weight (lbs)*	N/A	500	500	500
Fuel Capacity (gal)	N/A	75	75	75

WORKHORSE® CHASSIS

Engine LD	8.1L	8.1L	8.1L	8.1L
Wheelbase	190"	208"	208"	228"
GVWR (lbs) (1)	17,000	20,700	20,700	22,000
Front GAWR (lbs) (2)	6,000	7,500	7,500	8,000
Rear GAWR (lbs) (2)	11,000	13,500	13,500	14,500
Base Weight (lbs) (3)	13,700	16,350	16,350	17,600
GCWR (lbs) (4)	21,000	25,700	25,700	26,000
Hitch Rating (lbs)*	5,000	5,000	5,000	5,000
Tongue Weight (lbs)*	500	500	500	500
Fuel Capacity (gal)	75	75	75	75

Liquid Weight Reference: Water (gal.) = (8.3 lbs./3.8 kgs.)
 Fuel (gal.) = (6.1 lbs./2.8 kgs.)
 LP Gas (gal.) = (4.2 lbs./1.9 kgs.)

Metric Conversion: Multiply pounds x 0.453 to obtain kilograms
 Multiply gallons x 3.785 to obtain liters

DIMENSIONS	30H	31A	31W	34F
Length (5)	31' 8"	32' 2"	32' 2"	34' 8"
Height (with A/C)	11' 8"	12' 0"	12' 0"	12' 0"
Width (maximum) (6)	102"	102"	102"	102"
Interior Height (maximum)	79"	79"	79"	79"
Interior Width (maximum)	96"	96"	96"	96"
LIQUID CAPACITIES (Gallons)				
Fresh Water Holding Tank (gal)	80	80	80	100
Grey Water Holding Tank (gal)	58	58	58	58
Black Water Holding Tank (gal)	42	42	42	42
Appliance LPG Tank (gal) (WC) (7)	25	25	25	25
Water Heater Tank (gal)	6	6	6	6

1. GVWR (Gross Vehicle Weight Rating): Means the maximum permissible loaded weight of the motor home. The GVWR is equal to or greater than the sum of the unloaded vehicle weight plus the net carrying capacity.
2. GAWR (Gross Axle Weight Rating): Means the maximum permissible loaded weight a specific axle is designed to carry.
3. Base Weight: Means the estimated weight of the motor home without fuel, options, water, cargo or passengers.
4. GCWR (Gross Combined Weight Rating): Means the value specified by the motor home manufacturer as the maximum allowable loaded weight of this motor home with its towed vehicle. Towing and braking capacities may differ. Refer to Fleetwood and chassis manufacturer manuals for complete information.
5. Length taken from front bumper to rear bumper (excludes accessories).
6. Excludes safety equipment and awnings.
7. Tank Manufacturer's listed water capacity (WC). Actual LP Gas capacity is 80% of water listing as required by the safety code.

N/A: Not available for this model.

* The chassis manufacturer recommends the installation of a supplemental brake control system to activate the brakes on the vehicle or trailer you are towing.

Storm

RV OWNERCARE...

is a limited one-year/three-year or 15,000 mile warranty, whichever occurs first, and it is fully transferable for the first 12 months.

RV OWNERCARE is one of the RV industry's most comprehensive programs and includes systems, appliances, components, and construction, with no deductible and no service charge.

RV OWNERCARE coverage is provided from a company that will be around in the future to service your needs. See your nearest Fleetwood dealer for a full explanation of benefits and restrictions.

Club Fleetwood...

As a Fleetwood owner, you're eligible to become a member of our owners group, Club Fleetwood. It's a perfect way to meet other Fleetwood owners who love to travel to beautiful resorts and vacation spots all across America. Call (877) 577-2560 and join the fun!



What Drives You?

Maybe it's feeling like you're the only one on Earth. Perhaps it's the unique sense of closeness with the great outdoors. Or, it might be the joy that comes from spending quality time with family and friends.

Whatever the reason, we know that you have a strong drive to experience everything that comes with spending time on the road. And for more than 50 years, we've shared that passion with you.

Because we're RV enthusiasts ourselves, you can see our passion in the vehicles we design and build. Own a Fleetwood, and you'll feel like you're not just traveling, but embarking on an experience unlike any other.

Set your own course for adventure and get out there and explore the world around you. Once you do, you'll see what it is that drives us — it's you.



Your local Fleetwood dealer is:

www.fleetwoodrv.com Visit our website to find a dealer near you or learn more about other Fleetwood products. Or call 1-800-444-4905.



IMPORTANT—PLEASE READ: Product information, photography and illustrations included in this publication were as accurate as possible at the time of printing. For further product information and changes, please visit our website at www.fleetwoodrv.com or contact your local Fleetwood dealer. Prices, materials, design and specifications are subject to change without notice. All weights, fuel, liquid capacities and dimensions are approximate. Fleetwood has designed its recreational vehicles to provide a variety of uses for its customers. Each vehicle features optimal seating, sleeping, storage and fluid capacities. The user is responsible for selecting the proper combination of loads (i.e. occupants, equipment, fluids, cargo, etc.) to ensure that the vehicle's capacities are not exceeded.