



T W O T H O U S A N D F O U R



DOLPHIN



DOLPHIN LX

SPECIFICATIONS & FLOORPLANS



	DOLPHIN				DOLPHIN LX			
WEIGHTS (POUNDS)	5320	5342	5355	5375	6320	6342	6355	6375
Workhorse Chassis								
Gross Vehicle Weight Rating	22,000 lbs.	22,000 lbs.	22,000 lbs.	22,000 lbs.	22,000 lbs.	22,000 lbs.	22,000 lbs.	24,000 lbs.
Gross Combined Weight Rating	26,000 lbs.	26,000 lbs.	26,000 lbs.	26,000 lbs.	26,000 lbs.	26,000 lbs.	26,000 lbs.	30,000 lbs.
Front Gross Axle Weight Rating	8,000 lbs.	8,000 lbs.	8,000 lbs.	8,000 lbs.	8,000 lbs.	8,000 lbs.	8,000 lbs.	9,000 lbs.
Rear Gross Axle Weight Rating	15,000 lbs.	15,000 lbs.	15,000 lbs.	15,000 lbs.	15,000 lbs.	15,000 lbs.	15,000 lbs.	15,500 lbs.
Unloaded Vehicle Weight	18,600 lbs.	19,070 lbs.	19,170 lbs.	20,050 lbs.	18,720 lbs.	19,440 lbs.	19,660 lbs.	20,690 lbs.
Maximum Carrying Capacity	3,400 lbs.	2,930 lbs.	2,830 lbs.	1,950 lbs.	3,280 lbs.	2,560 lbs.	2,340 lbs.	3,310 lbs.
Cargo Carrying Capacity (CCC)	1,956 lbs.	1,486 lbs.	1,386 lbs.	572 lbs.	1,836 lbs.	1,116 lbs.	896 lbs.	1,932 lbs.
MEASUREMENTS	5320	5342	5355	5375	6320	6342	6355	6375
Wheelbase	208"	228"	228"	242"	208"	228"	228"	242"
Overall Length	33' 9"	34' 9"	36'	37' 2"	33' 9"	34' 9"	36'	37' 2"
Exterior Height	11' 10"	11' 10"	11' 10"	11' 10"	11' 10"	11' 10"	11' 10"	11' 10"
Exterior Height (with Satellite)	12' 6"	12' 6"	12' 6"	12' 6"	12' 6"	12' 6"	12' 6"	12' 6"
Interior Height	79½"	79½"	79½"	79½"	79½"	79½"	79½"	79½"
Interior Width	98½"	98½"	98½"	98½"	98½"	98½"	98½"	98½"
Exterior Width	102"	102"	102"	102"	102"	102"	102"	102"
TANK CAPACITIES	5320	5342	5355	5375	6320	6342	6355	6375
Water Heater	10 gal.	10 gal.	10 gal.	10 gal.	10 gal.	10 gal.	10 gal.	10 gal.
Gray Tank	45 gal.	60 gal.	60 gal.	60 gal.	45 gal.	60 gal.	60 gal.	60 gal.
Black Tank	45 gal.	47 gal.	47 gal.	42 gal.	45 gal.	47 gal.	47 gal.	42 gal.
Fresh Water Tank(s)	80 gal.	80 gal.	80 gal.	72 gal.	80 gal.	80 gal.	80 gal.	72 gal.
LP-Gas Tank (Volume W.C.)	24.2 gal.	24.2 gal.	24.2 gal.	24.2 gal.	24.2 gal.	24.2 gal.	24.2 gal.	24.2 gal.

Due to continued product improvement, National R. V., Inc. reserves the right to change materials, colors, specifications and prices at any time without notification. Copyright © 2004 by National R. V., Inc. 01/04

DOLPHIN 2004 FEATURES & SPECIFICATIONS

DOLP	DOLX	
		BODY CONSTRUCTION
• •		Duraframe® patented steel sub floor construction
• •		Steel framed laminated floor
• •		Steel framed crowned laminated fiberglass roof
• •		Steel framed laminated fiberglass high gloss walls
• •		Front and rear molded high gloss fiberglass caps
• •		Full panoramic tinted windshield
• •		Soft fabric ceiling material
• •		Electric slide-out room with overhead cabinets (flush floor on lounge slide models only)
• •		Insulated fiberglass exterior storage compartment doors with integrated paddle latches and gas struts
• •		Steel framed exterior storage compartments with insulated bottoms
• •		Lighted storage compartments and service area
• •		Exterior assist handle
• •		Aluminum rear ladder
• •		Awning rail/rain gutter with drip spouts
• •		Automotive undercoating
• •		Steel insulated front bulkhead
• •		Custom combination paint and vinyl exterior graphics with three available color schemes
• •		Custom vinyl exterior graphics with two available color schemes
		COCKPIT FEATURES
• •		Big button AM/FM cassette stereo and CD with four speakers
• •		Driver and passenger bullet reading lights with switches
• •		Multi-disc CD changer
• •		Custom dash in dark gray matte grid finish with full gauge package
• •		Convenience tray
• •		Audible turn signals
• •		Chrome electric horns
• •		Pantographic windshield wipers
• •		Power steering
• •		Cruise control
• •		Tilt steering wheel
• •		Oversized steering wheel with power steering
• •		Rear vision system with built-in microphone
• •		Overhead dash fans (2 speed)
• •		Power heated double convex rear view mirrors
• •		Passenger work station with 12V/120V receptacle and phone jack in console
• •		Aviation style sun visors
• •		Electric sunvisors
• •		Hydraulic leveling jacks with dash mounted controls
• •		Generator hour meter and auxiliary start switch on dash
• •		Exterior temperature sensor
• •		Wraparound privacy curtain with easy reach wand
		APPLIANCES & ACCESSORIES
• •		8 cu. ft. double door refrigerator and pantry
• •		10 cu. ft. double door refrigerator with icemaker and pantry
• •		12 cu. ft. Norcold® four door refrigerator with ice maker (delete pantry) <i>N/A 5320 AND 6320</i>
• •		High output three burner cooktop with drawers below with flush mount Corian® range cover

DOLP	DOLX	
• •		21" high output three burner cooktop with range/oven and flush mount Corian® range cover
• •		GE® SpaceSaver convection microwave oven with carousel, built-in light and fan
• •		Cable TV hook-up and multiple telephone jacks
• •		TV antenna
• •		RCA® 27" flat screen TV in cockpit
• •		RCA® 19" TV with front A/V jacks in bedroom
• •		RCA® 20" flat screen TV with front A/V jacks in bedroom
• •		Exterior entertainment package: Includes a 19" RCA stereo TV, AM/FM stereo with CD on a swivel base located in an exterior compartment on a full-extension slide tray with two fixed speakers mounted by the exterior TV
• •		Home theater entertainment package: Includes an RCA® DVD digital receiver and five speaker/subwoofer system
• •		RCA® DVD player
• •		Video control box with antenna boost
• •		Pre-wired for the Kingdome® satellite dish
• •		Kingdome® automatic stationary satellite dish
		FURNITURE
• •		Kustom Fit® fabric 6-way power driver recliner seat with swivel base
• •		Kustom Fit® fabric passenger recliner seat with swivel base
• •		Kustom Fit® soft touch OptimaLeather® cockpit seating package: Includes a soft touch OptimaLeather® 6-way power driver seat with swivel base and a soft touch OptimaLeather® manual passenger seat with swivel base
• •		Kustom Fit® soft touch OptimaLeather® manual extra-wide passenger recliner seat with swivel base
• •		Kustom Fit® soft touch OptimaLeather® cockpit seating package including a soft touch OptimaLeather® 6-way power driver seat with swivel base and soft touch OptimaLeather® extra-wide passenger seat with swivel base
• •		Kustom Fit® Wonder-Bed® fabric sleeper sofa with slide-in armrests
• •		Kustom Fit® Wonder-Bed® soft touch OptimaLeather® sleeper sofa with slide-in armrests
• •		Kustom Fit® freestanding fabric swivel recliner chair with footrest
• •		Kustom Fit® freestanding soft touch OptimaLeather® Euro-recliner with ottoman
• •		Kustom Fit® freestanding soft touch OptimaLeather® swivel recliner chair with footrest
		INTERIORS
		Throughout Coach
• •		Maple paneling and doors
• •		Cherry paneling and doors
• •		Sterling and Heritage packages (see sidebar)
• •		Telestrut hardware on overhead doors and positive catches on others
• •		Drawers with ball bearing roller guide design
		Cockpit Area
• •		Floor mats

DOLP	DOLX	
• •		Living Area
• •		Booth dinette with slide-out storage drawers
• •		Dinette cabinet/table with built-in table extension, two high-back wooden chairs and two wooden folding chairs <i>N/A 6320</i>
• •		Dinette cabinet/table with built-in table extension, two low-back wooden chairs and two wooden folding chairs <i>N/A 5320</i>
• •		Plush carpet with deluxe pad
• •		Day/night shades with designer valances
• •		Hutch and overhead with beveled mirror <i>5355 AND 6355</i>
• •		Solid raised panel cabinet doors
		Kitchen Area
• •		Slide-out pantry (not available with 12 cu. ft. refrigerator option)
• •		Corian® kitchen countertop with Corian® flush mount stove cover
• •		Corian® countertop extension <i>N/A 5375 AND 6375</i>
• •		Beveled mirror above galley backsplash
• •		Swanstone® high-line under-mount or Large Stainless steel kitchen sink with Corian® sink covers (varies with décor package)
• •		Porcelain sink with wood cutting block sink cover
• •		Wastebasket
• •		Designer vinyl flooring
• •		Ceramic tile flooring with inlaid tile accents
• •		Venetian mini-blind with valance
• •		Molded ABS silverware organizer
		Bath Area
• •		Ceramic tile flooring with inlaid tile accents
• •		Designer vinyl flooring
• •		Decorative shower glass etching
• •		Corian® lavy top
• •		Laminate lavy top with decorative edge
• •		Medicine cabinet
• •		Dresser cabinet with four drawers (washer/dryer prep) <i>5355, 5375, 6355 AND 6375</i>
• •		Combination washer/dryer <i>5355, 5375, 6355 AND 6375</i>
		Bedroom Area
• •		Plush carpet with deluxe pad
• •		Day/night shades with designer valances
• •		Cedar lining in wardrobe
• •		Sliding mirrored wardrobe doors with drawers below
• •		Bedsprad, pillows and shams
• •		Wall dresser with drawers and laundry hamper <i>5342 AND 6342</i>
• •		Slide-out queen bed with pull out drawers and storage compartment <i>N/A 5375 AND 6375</i>
• •		"Sandpiper Deluxe" residential-style pillow top mattress (60" x 80")

DOLP	DOLX
ELECTRICAL SYSTEMS & LIGHTS	
● ●	55 Amp MagneTek® solid state power converter and charger
● ●	50 Amp 120V distribution panel and cord
● ●	12V push button circuit breaker distribution panel
● ●	Onan® Marquis series generator
● ●	600 watt inverter
○	2,000 watt inverter/converter with remote on/off switch and four 6V deep cycle house batteries
● ●	Two 6V deep cycle house batteries
● ●	Battery disconnect switch for house batteries
● ●	Systems monitor panel
● ●	Porch light with interior switch
● ●	12V/120V patio receptacle and phone jack
● ●	Recessed fluorescent lights in ceiling with wall mounted switches
● ●	Designer light fixtures in living and bedroom areas
● ●	Cosmetic light in bathroom
● ●	Two water pump switches (kitchen and bath)
● ●	10 watt solar panel (mounted on roof)
● ●	Battery voltage meter in monitor panel
● ●	GFI protected electrical circuit
● ●	Courtesy light at entry door switch panel
PLUMBING & LPG SYSTEMS	
Coach Exterior	
● ●	Heated systems compartment with easy access to hook-ups
● ●	On demand water system and water pump
● ●	Holding tank rinse system (black tank only)

DOLP	DOLX
● ●	Winterization anti-freeze inlet to pump
● ●	Outside shower
● ●	Water heater bypass valve
● ●	Pressurized water fill with integrated regulator
● ●	10 gallon, quick-recovery water heater with direct spark ignition (gas/electric)
Kitchen Area	
● ●	Water filter
● ●	Single lever faucet with side sprayer
Bath Area	
● ●	One-piece fiberglass angled shower with seat <i>TUB/SHOWER 5375 AND 6375</i>
● ●	Residential single lever shower faucet
● ●	Porcelain toilet with sprayer
● ●	Single lever lavvy faucet
SAFETY FEATURES	
● ●	Daytime running lights
● ●	Driver and passenger three point seatbelts
● ●	Deadbolt lock on entry door
● ●	Fire extinguisher
● ●	Smoke, carbon monoxide (CO) and LPG detectors
● ●	Emergency exit window
WINDOWS, DOORS & AWNINGS	
● ●	Dual pane radius tinted safety glass windows
● ●	Patio awning with metal cover (electric awning with triple slide unit)
○ ○	Living room and bedroom window awning package
● ●	Bedroom rear picture window

DOLP	DOLX
● ●	Radius entrance door with clear glass, shade and screen door
● ●	Power double entrance step with light and anti-skid surface
● ●	Ventilated windows on sides of slide-out rooms (lounge slides only)
● ●	Slide-out topper awnings
● ●	Private toilet room with window <i>N/A 5342 AND 6342</i>
● ●	Tinted skylight in bathroom
CLIMATE CONTROL	
● ●	Coleman® 2-Ton high efficiency basement mounted air conditioner and heat pump with ceiling ducting
● ●	35,000 BTU electronic ignition furnace (dual 35,000/20,000 BTU electronic ignition furnace on 5375 and 6375)
● ●	Ducted heating system
● ●	12V Fan-Tastic® Vent with wall thermostat and rain sensor in galley/living area
● ●	12V roof exhaust fan in bathroom
● ●	Non-powered roof vent in bedroom
● ●	Dash automotive heating and air conditioner system with defroster



DÉCOR PACKAGES

Sterling Package:

- Stainless steel appliances and hardware
- Maple standard with available Walnut
- Custom paint and vinyl exterior graphics
- Corian® countertops throughout
- Ceramic tile flooring with inlaid tile accent
- Upgraded fabrics

Heritage Package:

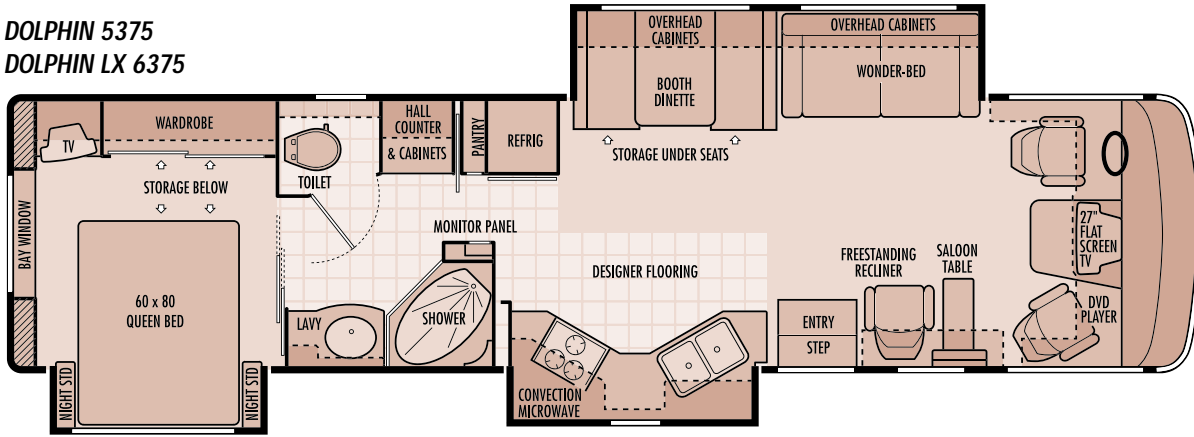
- Maple standard with available Cherry
- Custom paint and vinyl exterior graphics
- Corian® countertops throughout
- Ceramic tile flooring with inlaid tile accent
- Upgraded fabrics

WORKHORSE® CHASSIS	W-22	W-24
	All floorplans except 6375	6375 only
Tires	Michelin® XRV 235/80 R22.5G	Michelin® XRV 235/80 R22.5G
Wheels	22.5X6.75, 8-Lug Steel, SS Liner	22.5X6.75, 8-Lug Steel, SS Liner
Brakes	Hydro-Boost, 4-Wheel Disc ABS	Hydro-Boost, 4-Wheel Disc ABS
Drive Axle Gear Ratio	5.38:1	5.38:1
Alternator	130 Amp	130 Amp
Chassis Batteries	(1) 690 CCA	(1) 690 CCA
Shock Absorbers	Tuned Monroe®	Tuned Monroe®
Fuel Tank Capacity	75 Gallons	75 Gallons
Hitch Capacity	5,000 lbs. Class III**	5,000 lbs. Class III**
Chassis Warranty	3 years/36,000 miles	3 years/36,000 miles
GM® VORTEC® 8100 ENGINE		
Displacement	8.1 Liters (496 cu. in.)	8.1 Liters (496 cu. in.)
Peak Horsepower	340 HP @ 4,200 RPM	340 HP @ 4,200 RPM
Peak Torque	455 ft./lbs. @ 3,200 RPM	455 ft./lbs. @ 3,200 RPM
Engine Warranty	3 years/36,000 miles	3 years/36,000 miles
ALLISON® 1000 TRANSMISSION		
Transmission Type	5-Speed Automatic Overdrive	5-Speed Automatic Overdrive (push button shifter for 6375)
Transmission Warranty	3 years/Unlimited miles	3 years/Unlimited miles

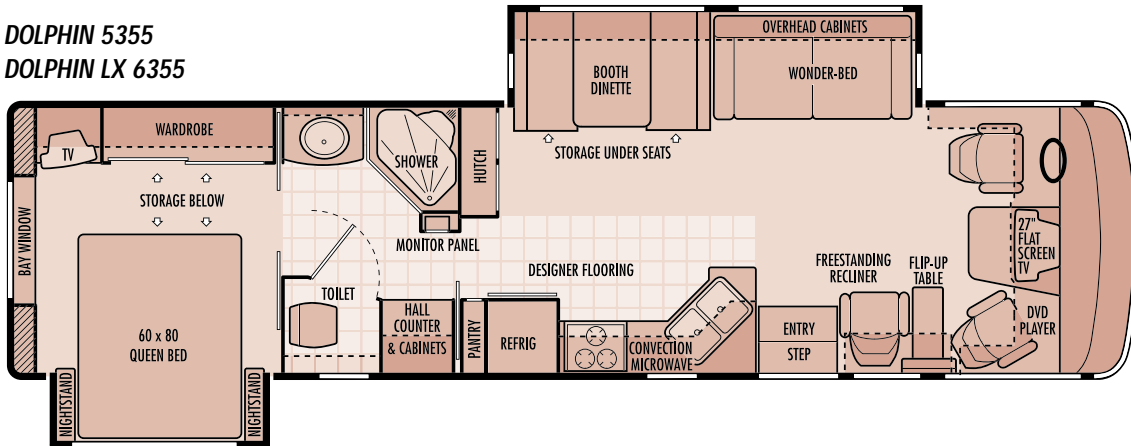
** Actual towing capacity is dependent on your particular loading and towing circumstances which includes GVWR, GAWR and GCWR as well as adequate trailer brakes. Please refer to your vehicle operator's manual for further towing information.
Due to continued product improvement, National R. V., Inc. reserves the right to change materials, colors, specifications and prices at any time without notification. Copyright © 2004 by National R. V., Inc. 01/04

DOLPHIN 2004 FLOORPLANS

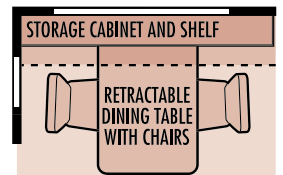
DOLPHIN 5375
DOLPHIN LX 6375



DOLPHIN 5355
DOLPHIN LX 6355

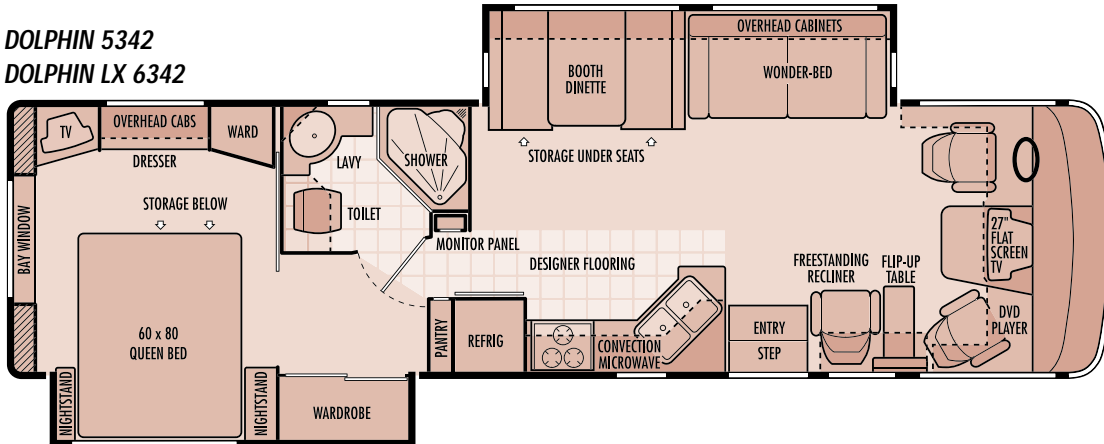


AVAILABLE OPTIONS:



Retractable dining table with chairs
on DOLP 5342, 5355, 5375,
DOLX 6342, 6355 and 6375
REPLACES BOOTH DINETTE

DOLPHIN 5342
DOLPHIN LX 6342



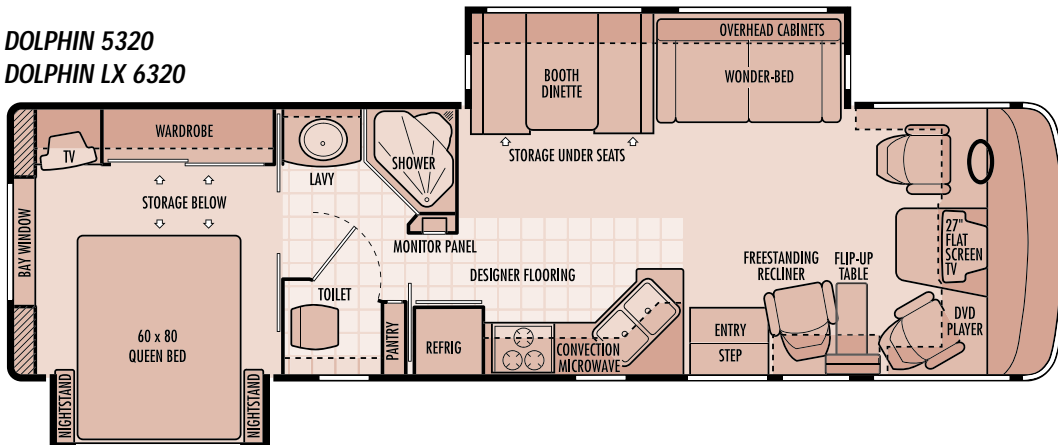
**WASHER/
DRYER**

Washer and Dryer
on DOLP 5355, 5375,
DOLX 6355 and 6375
REPLACES HALL COUNTER AND CABINETS



10 cu. ft. refrigerator with ice maker
for DOLP

DOLPHIN 5320
DOLPHIN LX 6320



12 cu. ft. refrigerator with ice maker
on DOLP 5342, 5355, 5375,
DOLX 6342, 6355 and 6375
REPLACES STANDARD PANTRY
AND REFRIGERATOR

Due to continued product improvement, National R. V., Inc. reserves the right to change materials, colors, specifications and prices at any time without notification. Copyright © 2004 by National R. V., Inc. 01/04