

T W O T H O U S A N D F O U R

# Sea Breeze



F E A T U R E S • M A T E R I A L S • M E T H O D S • S U P P O R T

# TRUST NATIONAL RV

National RV is celebrating its fortieth year of building quality recreational vehicles. During that time, the company has grown from a small camper manufacturer to one of America's premiere builders of diesel and gasoline powered class "A" motorhomes. So take a few moments to read the story of how this small company from Southern California shunned the trailer manufacturing techniques of its mass production competitors to focus on building the best motorhomes on the road.



## Sea Breeze

Whether you choose the well equipped Sea Breeze built on the reliable Ford Super Duty chassis or the full featured Sea Breeze LX built on the awesome Workhorse W-22 chassis, you will own a motorhome that far surpasses the competition in every aspect of features, quality and style.



SAN FERNANDO, CA HOME OF DOLPHIN CAMPER COMPANY, PREDECESSOR TO NATIONAL RV, c.1966

### BUILDING A BETTER MOTORHOME

Deciding to build a quality motorhome that bring its owners years of enjoyment is easy. National RV strives to use the latest technologies, yet the basics are constant: intelligent design and engineering coupled with the best materials and methods.

Every RV manufacturer knows HOW to build a better motorhome; National RV chooses to DO IT. Fundamental concepts—steel is stronger than aluminum, block foam insulation won't

sag like blanket insulation—determine the quality of a motorhome over the long haul. National RV chooses to adhere to those concepts. And with thousands of National RV products on the road and in use today (some for nearly 40 years now) the success of this strategy is evident in every happy owner.

To learn more about what it takes to build a better motorhome, follow the virtual factory tour, which begins right here! →

### SINGLE LOCATION

National RV has experienced phenomenal growth over the past forty years but has grown by reinvesting in its own products and facilities in sunny Southern California. Designing and building everything at a single location results in consistent quality across product lines, increased efficiencies and a stable, loyal workforce in the company's home community. When you buy a National RV, you'll never wonder whether it came from the "good" plant. They're all built in Perris, and they're all good.

### INVESTING IN THE FUTURE

Four decades have passed, yet there is still so much to learn. Emerging technologies, demographics and customer wants are constantly shaping the idea of what a motorhome should be. National RV's product development team is driven by customer feedback and the possibilities of emerging technologies. With a history of important innovations and patents already under its belt, National RV continues to research, develop, and invest in the latest manufacturing technologies to ensure ever increasing levels of quality and efficiency.



SEA BREEZE LX 8375 • ESPRESSO

### CONTENTS

### See Page

|   |           |
|---|-----------|
| <b>California Style</b> .....   | <b>4</b>  |
| <i>Sea Breeze bears the distinctive styling that is the hallmark of a National RV</i>   |           |
| <b>No Compromises</b> .....   | <b>6</b>  |
| <i>National RV chooses to use higher quality methods and components where competitors might cut corners</i>   |           |
| <b>Comfort &amp; Livability</b> .....   | <b>8</b>  |
| <i>Comfort and livability are where a thoughtfully planned, well-built motorhome is truly set apart from the travel trailer-like amenities of competitors' motorhomes</i> |           |
| <b>Full Featured Inside &amp; Out</b> .....   | <b>10</b> |
| <i>Walk around a Sea Breeze and you'll find attention to detail that extends to the most remote corners of the coach</i>  |           |
| <b>Total Engineering</b> .....  | <b>12</b> |
| <i>Rather than the haphazard collection of random parts that other manufacturers cobble together, Sea Breeze is a complete, engineered system</i>                         |           |
| <b>Join the Family</b> .....  | <b>14</b> |
| <i>Enjoy the benefits of being part of the National RV family</i>   |           |
| <b>Personalize Your Sea Breeze</b> .....  | <b>16</b> |
| <i>Put your own signature on your Sea Breeze with a choice of elegant interior and exterior color combinations</i>  |           |

### COMPUTER AIDED DESIGN

Every motorhome begins as an idea. In our Engineering Department, skilled drafters use the latest Computer Aided Design software to model the coach in cyberspace, ensuring a proper design and true fit of every component before a single piece is machined or cut.



### HAND CRAFTED DESIGNS

All molds, jigs and other manufacturing fixtures are built and maintained in-house to ensure consistent quality from part to part.



### HIGH TECH MANUFACTURING

Throughout the plant, high tech equipment is used to turn engineered plans into precisely milled components. National RV has invested heavily in the latest manufacturing technologies to ensure consistent quality as well as to maximize manufacturing efficiencies.



# CALIFORNIA STYLE

Maybe it's because we're situated directly between Hollywood and Palm Springs. Maybe it's because we work hard to build a motorhome that looks and feels like home. Whatever the reason, every National RV motorhome brings a little bit of California sunshine wherever it goes. And every Sea Breeze motorhome bears the distinctive "California Styling" that has become the hallmark of a National RV.



SEA BREEZE LX 8375 • ESPRESSO

## DISTINCTIVE INTERIORS

Sea Breeze may be one of America's best motorhome buys, but its interior styling is as distinctive and elegant as many higher priced motorcoaches. National RV's professional interior designers have created a

choice of two interior décors—Twilight and Espresso—that capture a spirit of fun and freedom that is inherent in the Sea Breeze name. Opulent fabric choices (see back page) are complemented by rich oak grained cabinetry throughout the coach. Designer light

fixtures, hardware and floor coverings complete Sea Breeze's inviting interior.



SEA BREEZE 1341 • TWILIGHT



SEA BREEZE LX 8375 • ESPRESSO

## STYLISH EXTERIORS

Sea Breeze sports sleekly contoured, molded fiberglass compartment doors, fenders and front and rear caps that lend it a distinctive, sculpted look—setting it apart from the boxy, flat surfaces and hard corners of typical motorhomes.

The gleaming high gloss gelcoat fiberglass is complemented with stylish, UV-resistant vinyl graphics in a choice of attractive color palettes.



SEA BREEZE LX 8311 • TWILIGHT

## TWO FLAVORS OF SEA BREEZE

Whether you prefer a motorhome built on the proven Ford Super Duty chassis or the awesome Workhorse W-22 chassis, there's a Sea Breeze motorhome for you. Additional differences are listed below:

*Sea Breeze*



- Ford® Super Duty Chassis 22,000 lb. or 20,500 lb. GVWR
- Ford® Triton™ V-10 engine 6.8 liters displacement (415 cu. in.) 310 HP @ 4,250 RPM 425 ft./lbs. torque @ 3,250 RPM
- Ford® 4R100 transmission 4-speed automatic with overdrive
- 19.5" 8-lug steel wheels Goodyear® RV 245/70R 19.5F tires
- Rear vision system optional
- 6 cu. ft. refrigerator standard
- Bedroom TV optional
- Winegard® satellite dish optional (comes pre-wired)
- Low mounted power heated single convex rear view mirrors
- Acrylic sun visors
- 6-gallon LPG water heater with electric ignition
- Dual pane windows optional
- Single step power entry step

*Sea Breeze LX*



- Workhorse® W-22 Chassis 22,000 lb. GVWR
- GM® Vortec® 8100 engine 8.1 liters displacement (496 cu. in.) 340 HP @ 4,200 RPM 455 ft./lbs. torque @ 3,200 RPM
- Allison® 1000 series transmission 5-speed automatic with overdrive
- 22.5" 8-lug steel wheels Michelin® XRV 235/80R 22.5G tires
- Rear vision system standard
- 8 cu. ft. refrigerator standard
- Bedroom TV standard
- KingDome® auto/stationary satellite dish optional (comes pre-wired)
- High mounted power heated double convex rear view mirrors
- Aviation style sunvisors
- 10-gallon LPG/electric quick-recovery water heater with direct spark ignition
- Dual pane windows standard
- Double step power entry step
- Wall-mounted switches for ceiling lights
- Daytime running lights
- Outside temperature sensor

## FACTORY TOUR CONTINUED

### IN-HOUSE MANUFACTURING

National RV prides itself in building as many of the coach components as possible in-house, from ABS plastic thermo-forming to fiberglass to wiring harnesses. In-house manufacturing enables National RV to closely monitor quality at every stage of manufacturing.



### COLD HARD STEEL

All of the structural components of the motorhome—subfloor structure, sidewalls, floors, bulkhead and the arched roof—are fabricated from steel. Competitors may use aluminum, wood or other materials to save costs, but none are as strong as cold hard steel.



### THE PATENTED DURAFRAME®

In the chassis shop, the patented Duraframe® all-steel subfloor system is constructed on precision assembly jigs. Fabricated from carefully formed steel components, the Duraframe® is welded at every joint to provide unyielding strength over the long haul. The completed Duraframe® substructure is carefully lowered onto the motorhome chassis then the two are welded together to form a permanent, super-strong structure. Next, a generous coat of rust-inhibiting paint is applied to the entire assembly before it enters the main assembly line.



# No COMPROMISES

You don't have to spend hundreds of thousands of dollars on a highline motorcoach to get the quality every RV enthusiast deserves. Sea Breeze provides that level of quality in a motorhome whose only modest feature is the price.

Cut corners that place profits before quality might not become apparent for months or years. When you're ready to trade your Sea Breeze in sometime in the future, you'll be thankful that National RV went the extra mile.



SEA BREEZE LX 8375 • ESPRESSO

## GENUINE CORIAN®

National RV proudly uses only genuine Corian® solid surface materials on every Sea Breeze kitchen countertop. It's the best countertop you can build into a motorhome—no other material can compare for beauty, performance and durability. At National RV, we don't cut corners like our competitors by using cheaper laminates or imitation Corian®.

## CULINARY AMENITIES

Cooking in Sea Breeze's well appointed kitchen is a delight. The standard GE® SpaceSaver® microwave oven, high output 3-burner cooktop and porcelain dual sink with cutting block cover make quick work of any meal. Popular options include a GE® SpaceSaver® convection microwave, larger refrigerators with icemakers\* and a conventional oven.

\*8 cu.ft. for Sea Breeze; 10 cu.ft. for Sea Breeze LX



SEA BREEZE LX 8311 • TWILIGHT



SEA BREEZE LX 8311 • TWILIGHT



SEA BREEZE 1341 • TWILIGHT

## KUSTOM-FIT® SEATING

For comfort that lasts, no seat beats Kustom-Fit®. Built especially for National RV in our color coordinated fabrics, this cockpit and living area seating exceeds the comfort and quality of furniture in much more expensive "highline" motorhomes. With Kustom-Fit's exclusive cold poured foam and welded steel frame, these seats will provide driving and relaxation comfort for many years to come.



SEA BREEZE 1341 • TWILIGHT

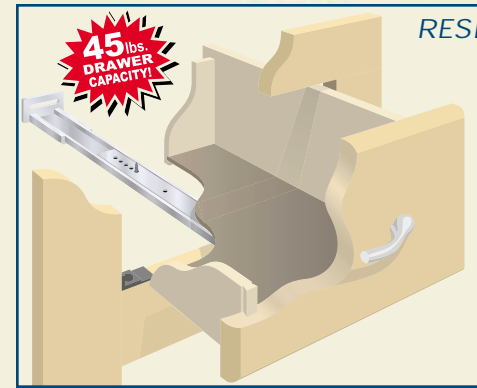


## COLD Poured SEAT FOAM HAS A 10 YEAR WARRANTY!

Each cushion is formed as a single piece, molded in the correct shape. Competitors' seats are pieced together from blocks of foam which can come unglued and fall apart.

## STEEL SEAT FRAME

Constructed of welded tubular steel for superior strength; carries a lifetime warranty.



45 lbs. DRAWER CAPACITY!

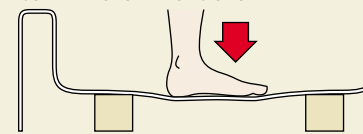
## RESIDENTIAL QUALITY DRAWER CONSTRUCTION

Accuride® steel ball bearing drawer glides provide 45 lbs. of smooth operating drawer capacity; compare that to competitors' 7 lb. drawer capacity using plastic drawer glides. These drawers are constructed using the time-honored dovetail joint method, not staples. Each drawer is finished with a solid hardwood drawer front for lasting beauty and structural integrity.

## ONE-PIECE FIBERGLASS SHOWER

Step into a competitor's plastic shower and feel it give under your weight. Then step into a National RV shower and feel the satisfying rigidity that only a National RV one piece fiberglass shower provides.

### COMPETITORS' PLASTIC SHOWER



### NATIONAL RV FIBERGLASS SHOWER



SEA BREEZE LX 8375 • ESPRESSO

## ELECTRICAL SYSTEM

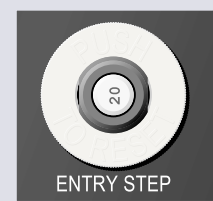


## ONAN® MARQUIS GENERATOR

The reliable ultra quiet Onan® generator provides 5.5 kW of power no matter how far you are from civilization.

## RESETTABLE BREAKERS

Control of Sea Breeze's advanced house electrical system is at your fingertips with an ingenious new breaker panel



conveniently located inside the coach.



Now, rather than having to carry—and find—extra fuses whenever a circuit is overloaded, simply push the breaker to reset it. All circuits are clearly labeled for easy identification.

## 50 AMP SERVICE & CORD

Compared to competitors' 30 amp service, Sea Breeze's 50 amp solid state converter and charger and optional 600 watt inverter provide plenty of power for comfortable living.

## WALL SWITCHES FOR CEILING LIGHTS

Centrally located wall switches make turning ceiling lights on or off more convenient.

## FACTORY TOUR CONTINUED

### CABINET SHOP

In another part of the plant, cabinetmakers are busy crafting the wooden fixtures to be placed inside the coach. Computer Aided Design (CAD) provides precisely fit components, then skilled craftsmen bring them together into a sturdy, elegant finished product.



### ASSEMBLY LINE

Once it arrives on the assembly line from the chassis shop, the building of the coach "house" begins. The floor is laid, cabinets set into place, and all wiring and plumbing routed.



### TUBULAR STEEL FRAME

In the coach body shop, all coach body components—sidewalls, floors and roofs—are constructed with frames of tubular steel. Here is where precision pays off, as a properly fabricated wall frame will ensure a tight coach body structure over the long haul.



### A COCOON OF INSULATION

The entire coach is literally surrounded in high density EPS block foam insulation. Each piece is precisely cut to fit between the members of the tubular steel frame then laminated into place. This insulation will never settle or sag like fiberglass blanket insulation.



# COMFORT & LIVABILITY

**M**any gasoline motorhomes are built by companies who specialize in building inexpensive travel trailers—and their expertise in using cheaper materials and methods is evident in their motorhomes. National RV, on the other hand, was built on designing and manufacturing motorhomes for the RV enthusiast. This fundamental difference in design and manufacturing philosophy is what sets Sea Breeze apart from the competition, and yields a level of quality, comfort and livability that other motorhomes just can't match.



SEA BREEZE LX 8311 • TWILIGHT

## SPACIOUS FLOORPLANS

All Sea Breeze floorplans feature double or triple slide-outs to pack maximum living space into a coach size that's easy to drive and park. And wherever you look, every available space is thoughtfully utilized for extra storage or convenient location of coach components.

## THAT'S ENTERTAINMENT!

A huge 27" flat screen TV is placed in the cabinetry above the cockpit area for comfortable viewing from anywhere in the living area. DVD player, cable TV hookups and an optional satellite dish expand your entertainment possibilities. Sea Breeze LX is available with an outdoor home theater entertainment package featuring a 19" TV and AM/FM/CD stereo on a swivel slide-out mount in an exterior compartment.



SEA BREEZE 1341 • TWILIGHT



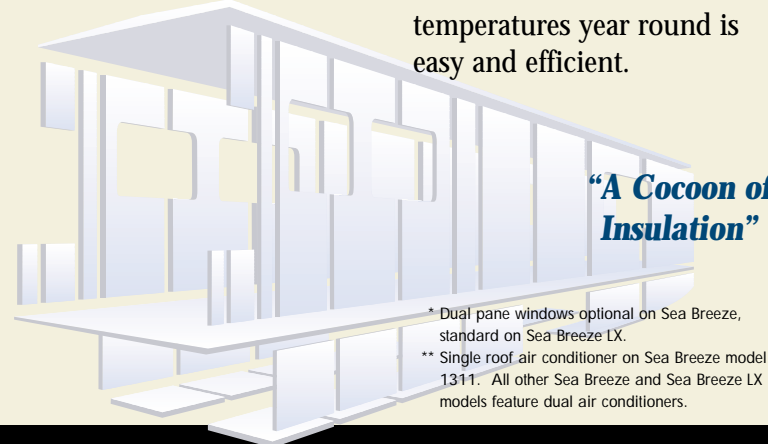
SEA BREEZE LX 8311 • TWILIGHT



SEA BREEZE 1341 • TWILIGHT

## 4 SEASONS COMFORT

A cocoon of EPS block foam insulation surrounds the entire coach, laminated directly into the sidewalls, floor, roof—even the storage compartment doors and floors. Block foam won't settle and sag over time the way spun fiberglass insulation will. Dual pane tinted windows\* help keep heating and cooling efficient. Dual\*\* Duo-Therm roof air conditioners and twin in-ceiling ducts provide quick, targeted cooling anywhere in the coach. A ducted 35,000 btu furnace with electronic ignition (plus an additional 20,000 btu furnace on Sea Breeze LX model 8375) keep you cozy through the winter. With the centrally located climate control center, keeping the interior of the Sea Breeze at comfortable temperatures year round is easy and efficient.



**"A Cocoon of Insulation"**

\* Dual pane windows optional on Sea Breeze, standard on Sea Breeze LX.  
 \*\* Single roof air conditioner on Sea Breeze model 1311. All other Sea Breeze and Sea Breeze LX models feature dual air conditioners.

## SUPERIOR CABINET CONSTRUCTION

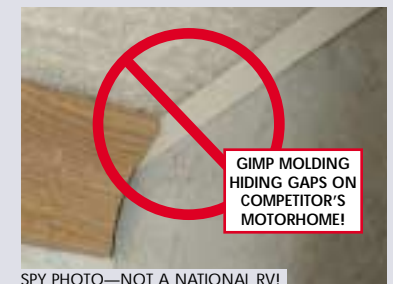


**Take a close look at the cabinetry** inside a Sea Breeze motorhome. You'll find many thoughtful details that set Sea Breeze apart.

- Carpet lined kitchen cabinets and drawers reduce noise and protect your pots and pans during transit.
- Solid hardwood raised panel or flat panel cabinet doors and drawer fronts.
- Telestrut hardware on upward opening overhead cabinet doors conveniently holds them open, then holds them in their positive catches when closed.
- Storage space everywhere you look, such as a convenient vertical pull-out pantry and huge storage areas under the dinette seats with convenient slide-out bins on Sea Breeze LX!
- Superior fit and finish with tight cabinet-to-wall fit; compare to large gaps covered with gimp molding on competitors' motorhomes—**there is no gimp molding in a Sea Breeze!**



SEA BREEZE LX 8375 • ESPRESSO



**GIMP MOLDING HIDING GAPS ON COMPETITOR'S MOTORHOME!**

SPY PHOTO—NOT A NATIONAL RV!



SEA BREEZE LX 8375 • ESPRESSO

## FACTORY TOUR CONTINUED

### VACUUM LAMINATION

All coach body panels are vacuum laminated for unequal strength and durability. This process uses advanced adhesives—carefully metered by computer-controlled extruders—and vacuum to bond the various input components into a single, inseparable unit.



### CNC PRECISION

A computer-numerically-controlled (CNC) router precisely cuts windows and other openings in the sidewalls. Routed-out pieces aren't wasted—they're further shaped into insulated, sound-deadening panels for our heated basement storage compartments.



### IT'S STARTING TO LOOK LIKE A MOTORHOME

By the time the sidewall is set into place on a National RV motorhome, many man and machine hours as well as the best materials and methods have already contributed to creating the sturdiest and all around best-performing motorhome sidewalls available. National RV's unique method for attaching the sidewall places no shear forces on the fasteners. Rather, the weight of the sidewall rests upon a sturdy ledge of steel. Screws are used to hold the wall laterally to the edge of the coach floor, but do not bear the weight of the sidewall and roof assemblies.



# FULL FEATURED INSIDE & OUT!

Walk around a Sea Breeze and you'll discover an uncommon attention to detail even in the most remote corners of the motorhome. On the roof, find a seamless fiberglass roof skin. Open a storage compartment door and look through all the way to the other side. Run a hand along the sleek, molded fiberglass body panels and feel the quality that sets Sea Breeze apart.



SEA BREEZE LX 8375

## FULL GELCOAT FIBERGLASS EXTERIOR

Every Sea Breeze motorhome is completely surrounded by gelcoat fiberglass—just like a boat—for long lasting quality, performance and great looks. The sidewalls, full front and rear caps, compartment

doors, even the roof all have exterior surfaces made of gleaming, durable gelcoat fiberglass. Sea Breeze is the only motorhome in its class that has it, while others choose to cut costs by using plastic, rubber and other cheaper materials.

## LEVELING JACKS

Quickly level the coach from the comfort of the driver's seat. Some motorhomes use only 3 jacks to cut costs but Sea Breeze features 4 leveling jacks—one on each corner—for a firm, stable living area.

## FLUSH SLIDE-OUTS

Look down the sides of other motorhomes and you'll see unsightly, high drag protrusions at the slide-out seams. Sea Breeze's slide-outs use an ingenious double bulb sealing system to provide a flush surface when closed and a water-tight seal at all times.



## PASS-THROUGH BASEMENT STORAGE

National RV's patented Duraframe® all-steel subfloor system makes huge pass-through basement storage bays possible. The Duraframe® provides unmatched coach support through a steel truss framework that is engineered to provide both strength and rigidity to the coach. The design of the Duraframe® also maximizes basement storage volume. Thick tubular steel risers lift the coach floor above the chassis frame rails for even more space and to provide pass-through functionality.

## EASY UTILITIES ACCESS



Few motorhomes can match the functionality and convenience found in Sea Breeze's utilities compartment:

- Clearly labeled, easy to reach valves
- Black tank rinse system
- Winterization anti-freeze inlet to pump
- Heated and insulated compartment
- Water heater bypass valve
- Pressurized water fill with regulator

## 96" DRIVING SPACE

Sea Breeze's contoured fiberglass lower skirt effectively creates a 96" (standard width) driving space for a coach that boasts all of the living space of a 102" wide body motorhome. This narrower space close to the road makes it easier to drive and maneuver through parking lots and tight spaces without striking curbs and other obstructions with the coach's compartment doors and lower body skirt.



## COMPARTMENTS



Sea Breeze's storage compartments rival those of motorhomes costing thousands more, and far surpass any competitors in Sea Breeze's price range.

## FIBERGLASS DOORS

The industry standard is to save thousands of dollars at your expense by using cheap, plain looking flat panel compartment doors. By contrast, Sea Breeze's compartment doors are hand made with a stylishly contoured, molded fiberglass shell. Unlike the industry standard flat panel doors, these doors curve inward closer to the road to avoid rocks, curbs and other road hazards. EPS block foam insulation is laminated into the door, which is finished with a durable stainless steel piano hinge and convenient paddle latch.

## LAMINATED FLOORS

Sea Breeze's storage compartment floors are made with the same vacuum lamination process as the sidewalls, roof and coach floor. This includes sturdy 1/4" decking and thick EPS block foam insulation. Here again Sea Breeze is far superior to the industry standard—less durable rotocast plastic "tubs" that provide no insulation value.

## GAS CHARGED STRUTS

Dual gas charged struts make loading and unloading gear a breeze. They lift the door for you, then hold it up out of your way.



SEA BREEZE LX 1341

## PATIO AWNING

A color-coordinated patio awning with metal cover is on Sea Breeze LX, optional on Sea Breeze.

## FACTORY TOUR CONTINUED

### HAND MOLDED FIBERGLASS

Front and rear caps, compartment doors and one-piece showers are manufactured in National RV's state-of-the-art fiberglass production facilities. Pure unfilled resins and quality glass fiber are applied, with extra reinforcement applied in critical areas.



### WHITER WHITES

The gleaming high gloss gelcoat of the fiberglass components will become the beautiful exterior finish of the motorhome. Extra care is taken in the fiberglass finishing shop to buff each component to a mirror finish before sending it to the assembly line.



### CAP PLACEMENT

Front and rear caps are fully loaded with grills, light fixtures and other components before being delivered to the assembly line. Skillful coordination of manufacturing processes are required to ensure a steady flow of components to the line from assembly areas throughout the plant. Once the caps are in place, the motorhome "shell" is complete—with the motorhome surrounded in brilliant, protective, stylishly molded fiberglass. Further up the line, windows and doors are installed as finish work continues on the coach interior and exterior.



# TOTAL ENGINEERING

**A** Sea Breeze motorhome is a fully engineered system.

EXAMPLE  
TOTAL ENGINEERING

The strength of the Duraframe® Chassis System provides rigidity to the coach body, which leads to the tighter fit of the interior cabinetry, which in turn results in fewer gaps between the cabinetry and sidewall, eliminating the use of gimp molding to hide such gaps.

## THE DURAFRAME® CHASSIS SYSTEM

The Duraframe® Chassis System is a marriage of National RV's patented Duraframe® technology and select motorhome chassis from leading manufacturers.

The Duraframe® Chassis System is specifically engineered to provide the optimum performance,

strength, durability, ride quality and basement storage possible.

Rigidly fabricated of welded tube and sheet steel, the Duraframe® Chassis System provides all of the coach strength necessary to carry the load over the long haul. Other manufacturers rely on placing stresses on the coach body—the

sidewalls, roof and floor. This can lead to squeaks and rattles as well as overall loosening and weakening of the coach's structural integrity. In a Sea Breeze motorhome, the Duraframe® Chassis System bears these stresses, allowing the coach body and all of its components to remain as tight and quiet as possible.

# DURAFRAME® CHASSIS SYSTEM

### RIGID MOUNTED COMPONENTS

Basement-mounted components such as the LPG tank, batteries and holding tanks are rigidly anchored in the cold hard steel of the Duraframe® Chassis System.

### FLUSH FLOOR SLIDE MECHANISM

Flush floor technology provides residential livability. Precise rack and pinion slide mechanisms are attached directly to the Duraframe® for superior support.

### ALL STEEL BULKHEAD

Combined with the tubular steel cage-like frames of the sidewalls and roof, the driver and passenger are surrounded by a safety barrier of cold hard steel. Compare to competitors' wooden front bulkheads and aluminum framed walls and roof.

### SHEET STEEL OUTRIGGERS

The Duraframe® Chassis System uses rigid sheet steel outriggers to provide uniform coach support from the center to the edges. A truss style arrangement of outriggers and other steel members provides unmatched strength and rigidity to the overall motorhome.

### TUBULAR STEEL RISERS

Thick walled tubular steel risers lift the coach floor above the chassis rails to provide deep storage bays with pass-through versatility.

### 5,000 LB. TOW HITCH

Sea Breeze's Class III hitch is anchored directly to the all-steel Duraframe® Chassis System structure.



## CHASSIS CHOICES

Integrated into each Duraframe® Chassis System is a carefully selected chassis from a leading manufacturer. Each bare chassis is

specially chosen for its powertrain, safety, handling and weight rating characteristics. For the Sea Breeze motorhome,



this is the proven Ford Super Duty chassis.



For the Sea Breeze LX, it is the brawny Workhorse W-22 chassis.

For a side-by-side comparison of the two Sea Breeze chassis, see the sidebar on page 5.

## FINEST METHODS & MATERIALS MAKE UP THE WALLS, FLOOR AND ROOF

National RV uses an advanced vacuum lamination process in the construction of all coach body components. A layer of specially formulated industrial adhesive is carefully applied between each layer of the component.



APPLYING ADHESIVE

Once joined, the entire assembly is pulled into a vacuum chamber to bond the pieces together as the adhesive cures. The result is a piece that possesses all of the different qualities of its ingredients—the strength of steel, the insulative quality of the EPS block foam, the rigidity of the 1/4" luan—all in a single, solid, inseparable component.

### TUBULAR STEEL FRAME

Stronger and less susceptible to work fatigue than aluminum and won't decay like wood.

### CROWNED ROOF

The best RV roof in the business is built with welded tubular steel rafters. The crowned roof has radius edges for superior runoff.

### FIBERGLASS ROOF SKIN

A seamless barrier against moisture; more durable and easier to maintain and repair than rubber or aluminum.

### 1/4" STRUCTURE-WOOD®

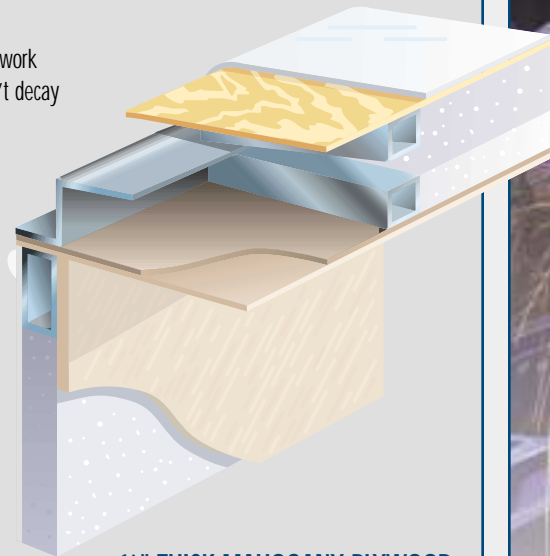
This oriented strand board (OSB) from Weyerhaeuser carries a 25 year warranty and is used for both the roof deck and interior ceiling panel.

### EPS BLOCK FOAM INSULATION

Used throughout the coach in every laminated coach body component. Won't settle or sag like spun fiberglass insulation. Insulation is up to 6" thick in the roof, and completely surrounds the coach living areas—it's even in the floor.

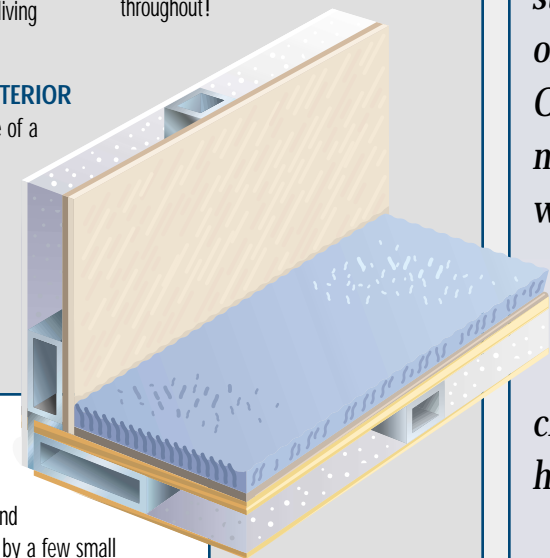
### HIGH GLOSS GELCOAT EXTERIOR

Exterior sidewall surface is made of a high gloss fiberglass gelcoat that is molded into a luan backing then vacuum laminated to the sidewall structure. The result is excellent resistance to delamination and long-lasting great looks.



### 1/4" THICK MAHOGANY PLYWOOD (LUAN) INTERIOR WALL PANEL

A thick, firm interior wall surface that's tough enough to anchor our cabinetry...and whatever pictures or fixtures you care to hang, wherever you want to hang them. Competitors' thin walls "give" when you push them, revealing their weakness beneath the surface, with reinforcements built in only where necessary to attach cabinets. Our walls are thick and rigid throughout!



### A BETTER WAY TO MOUNT A SIDEWALL

The National RV sidewall is placed on top of the steel floor framework. Some manufacturers use screws to fasten the sidewall horizontally to the edge of the floor. This places the fastening screws under an enormous amount of shear force, and the sidewall—and everything above it, such as the roof—is literally being held up by a few small screws! With the National RV method, the weight of the sidewall rests on the steel framework of the floor. Which would you prefer?

## COLD HARD STEEL

From the Duraframe® Chassis System to the steel framed coach body, National RV uses steel for EVERY structural component of the motorhome. Other manufacturers may use aluminum or wood in the same places, but none carry the strength and durability characteristics of cold hard steel.



## FACTORY TOUR CONTINUED

### IN THE BASEMENT

Stylishly contoured molded fiberglass compartment doors flank either side of the coach. EPS foam insulation runs throughout the basement floors, ceiling and doors. Paddle latches and gas charged struts aid in opening compartment doors with ease.



### REAP WHAT WE SEW

National RV's professionally designed interior décors come to life in the upholstery shop, where bolts of opulent fabrics are transformed into richly decorated window treatments, throw pillows, bedding and more.



### THE MAIN ASSEMBLY LINE

The heart of National RV's production facilities is the main assembly line. Here, a never-ending procession of motorhomes makes its way sideways through the plant on a specialized rail system. A veritable beehive of activity, the main line is where most of the coach's manufactured components are installed—name brand appliances, comfortable furnishings, interior lighting and fixtures. Near the end of the line, special UV-resistant graphics are applied and a nearly complete new motorhome emerges.



# JOIN THE FAMILY

When you buy a Sea Breeze motorhome, you become a member of the National RV family.

Through a wide variety of factory service and support benefits for owners to manufacturer support of local clubs and rallies—as well as the Islanders National RV Owners Club—National RV strives to foster a close, mutually beneficial relationship with the owners of the company's products.

## GREAT WARRANTY

National RV stands behind the quality components and workmanship built into every Sea Breeze motorhome with one of America's best RV warranties—including a 3 years/unlimited miles warranty against structural defects to the coach body and Duraframe® Chassis System. National RV covers all other factory installed components for a period of one year from the date of purchase.



## ROADSIDE ASSISTANCE

National RV provides a complimentary first year of coverage by Coach Net®, America's leading provider of 24-hour emergency roadside assistance. In addition to emergency towing, Coach Net® provides free trip planning, service scheduling assistance, travel maps, coverage for your towed vehicle and much more.

## FACTORY SERVICE

In addition to hundreds of trained service technicians at its dealers throughout North America, National RV operates two large Factory Service and Parts Distribution Centers, one on each coast. This ensures that the expertise and parts to fix any problem are readily available either at your local dealer or one of these centers.



At National RV, we're fanatics for the RV lifestyle! We promote the RV lifestyle and camaraderie among our owners through the National RV Owners Club and local chapters. Membership in the Club is complimentary with your purchase of a National RV.

**ISLANDERS GETAWAYS** GetAways are the highlight of National RV Owners Club membership. These well-organized events are a great opportunity to meet other RV enthusiasts. GetAways are

held throughout the year at interesting locations across the United States. Quality entertainment, great food and fun activities are all part of every GetAway. You may also seek the assistance of National RV service technicians, tour the latest National RV products and hear the latest news from company officers.

## REGIONAL CLUBS

Many regional clubs cater to National RV owners in their local areas. National RV is committed to supporting these clubs through the Islander Newspaper, support for local rallies and events, and close cooperation

through the GetAways and the National RV Owners Club. To find a National RV affiliated regional owners club near you, please visit the National RV website at:

[www.nationalrv.com](http://www.nationalrv.com)



CUTTING THE RUG AT THE ISLANDERS GETAWAY!



PERRIS, CA SERVICE CENTER



ENJOY GREAT ENTERTAINMENT AT THE GETAWAYS



CHECKING OUT THE LATEST NATIONAL RVs



NATIONAL RV OWNER'S CLUB AT ISLANDERS GETAWAY SALINA, KS

## THE ISLANDER

The Islander is published quarterly for the benefit of all National RV owners. A subscription to the Islander is included in the Islanders Club membership, which is



provided for free for the first year by National RV. Inside you'll find:

- Product Spotlights
- Tech Tips
- Events Schedules
- Company News
- Islanders GetAways
- Reader's Letters
- Interesting Destinations
- Photos and reports from past events
- Regional club info

Ask your dealer for a complimentary copy of The Islander!

## FACTORY TOUR CONTINUED

### QUALITY ASSURANCE

Of course, no National RV hits the road without first undergoing a thorough battery of quality checks. In the rain test booth, every coach is subjected to a simulated rainstorm—with all of the slideouts extended!



### READY FOR DELIVERY!

Finally, quality auditors test every component of the coach for proper operation. After a thorough cleaning, the interior fabrics—carpets, seats and furniture—are covered in protective plastic to ensure delivery of a clean, tidy motorhome.



### SEEING IS BELIEVING

We invite you to come to the factory and see for yourself the quality workmanship that goes into every National RV. Here you can walk the assembly line and witness the process as raw steel, fiberglass and other components are skillfully crafted into a complete, finished motorhome.

Plant tours are conducted daily from the main entrance of our manufacturing facilities at 3411 N. Perris Boulevard in sunny Perris, California.





# PERSONALIZE YOUR SEA BREEZE

## CUSTOM VINYL EXTERIOR GRAPHICS

Crafted of durable UV-resistant vinyl in a choice of tastefully chosen color palettes.

### SEA BREEZE



GREEN & TAN



BLUE

### SEA BREEZE LX



GREEN & TAN



BLUE

## PROFESSIONALLY DESIGNED INTERIORS

National RV's interior decors are tastefully designed by a staff of professional interior designers. For the 2004 Sea Breeze, two interior decor choices—Espresso and Twilight—have been developed to complement the fun and freedom suggested in the Sea Breeze name.



ESPRESSO



TWILIGHT



OAK (STANDARD)



MAPLE (OPTIONAL)

## NATIONAL R.V., INC.

3411 N. Perris Boulevard  
Perris, California 92571  
(800) 260-8527 • Fax (909) 943-8498

[www.nationalrv.com](http://www.nationalrv.com)

©2003 National R.V., Inc. Due to continuing product improvements, colors, specifications and equipment are subject to change without notice. FEB04

YOUR AUTHORIZED SEA BREEZE DEALER IS: