

Sea Breeze

T W O T H O U S A N D F O U R



SEA BREEZE



SEA BREEZE LX

SPECIFICATIONS & FLOORPLANS



SEA BREEZE
FORD SUPER DUTY CHASSIS

SEA BREEZE LX
WORKHORSE W-22 CHASSIS

	1311	1321	1341	8311	8321	8341	8360	8375
WEIGHTS (POUNDS)								
Gross Vehicle Weight Rating	20,500 lbs.	20,500 lbs.	22,000 lbs.	22,000 lbs.	22,000 lbs.	22,000 lbs.	22,000 lbs.	22,000 lbs.
Gross Combined Weight Rating	26,000 lbs.	26,000 lbs.	26,000 lbs.	26,000 lbs.	26,000 lbs.	26,000 lbs.	26,000 lbs.	26,000 lbs.
Front Gross Axle Weight Rating	7,000 lbs.	7,000 lbs.	7,500 lbs.	8,000 lbs.	8,000 lbs.	8,000 lbs.	8,000 lbs.	8,000 lbs.
Rear Gross Axle Weight Rating	13,500 lbs.	13,500 lbs.	14,500 lbs.	15,000 lbs.	15,000 lbs.	15,000 lbs.	15,000 lbs.	15,000 lbs.
Unloaded Vehicle Weight	16,320 lbs.	17,090 lbs.	17,300 lbs.	17,360 lbs.	18,100 lbs.	18,400 lbs.	19,230 lbs.	19,770 lbs.
Maximum Carrying Capacity	4,180 lbs.	3,410 lbs.	4,700 lbs.	4,640 lbs.	3,900 lbs.	3,600 lbs.	2,770 lbs.	2,230 lbs.
Cargo Carrying Capacity	2,877 lbs.	2,107 lbs.	3,330 lbs.	3,304 lbs.	2,564 lbs.	2,197 lbs.	1,392 lbs.	852 lbs.
MEASUREMENTS								
Wheelbase	208"	208"	228"	208"	208"	228"	242"	242"
Overall Length	31' 8"	33' 4"	34' 11"	31' 8"	33' 4"	34' 11"	37' 2"	37' 2"
Exterior Height (Road Height)	11' 9"	11' 9"	11' 9"	12'	12'	12'	12'	12'
Exterior Height (with Satellite Option)	12' 3"	12' 3"	12' 3"	12' 6"	12' 6"	12' 6"	12' 6"	12' 6"
Interior Height	79½"	79½"	79½"	79½"	79½"	79½"	79½"	79½"
Interior Width	98½"	98½"	98½"	98½"	98½"	98½"	98½"	98½"
Exterior Width	102"	102"	102"	102"	102"	102"	102"	102"
TANK CAPACITIES								
Water Heater (Gas/Electric)	6 gal.	6 gal.	6 gal.	10 gal.	10 gal.	10 gal.	10 gal.	10 gal.
Gray Tank	40 gal.	45 gal.	50 gal.	40 gal.	45 gal.	50 gal.	60 gal.	60 gal.
Black Tank	40 gal.	45 gal.	50 gal.	40 gal.	45 gal.	50 gal.	47 gal.	42 gal.
Fresh Water Tank(s)	67 gal.	67 gal.	75 gal.	67 gal.	67 gal.	75 gal.	72 gal.	72 gal.
LPG Tank (Volume W.C.)	24.2 gal.	24.2 gal.	24.2 gal.	24.2 gal.	24.2 gal.	24.2 gal.	24.2 gal.	24.2 gal.

Due to continued product improvement, National R.V., Inc. reserves the right to change materials, colors, specifications and prices at any time without notification. Copyright © 2004 by National R.V., Inc. 01/04

SBRZ	SBLX	
		BODY CONSTRUCTION
• •		Duraframe® patented steel sub floor construction
• •		Steel framed laminated floor
• •		Steel framed crowned laminated fiberglass roof
• •		Steel framed laminated fiberglass high gloss walls
• •		Front and rear molded high gloss fiberglass caps
• •		Full panoramic tinted windshield
• •		Soft fabric ceiling material
• •		Electric slide-out room with overhead cabinets (flush floor on lounge slide models only)
• •		Insulated fiberglass exterior storage compartment doors with integrated paddle latches and gas struts
• •		Steel framed exterior storage compartment with insulated bottoms
• •		Lighted storage compartments and service area
• •		Exterior assist handle
• •		Aluminum rear ladder
• •		Awning rail/rain gutter with drip spouts
• •		Automotive undercoating
• •		Steel insulated front bulkhead
• •		Custom vinyl exterior graphics with two available color schemes
		COCKPIT FEATURES
• •		Big button AM/FM cassette stereo and CD with four speakers
○ ○		Multi-disc CD changer
• •		Driver and passenger bullet reading lights with switches
• •		Custom dash in gray matte diamond brush finish with full gauge package
• •		Convenience tray
• •		Audible turn signals
• •		Pantographic windshield wipers
• •		Power steering
• •		Cruise control
• •		Tilt steering wheel
• •		Oversized steering wheel with power steering
○ •		Rear vision system with built-in microphone
• •		Low-mounted power heated convex rear view mirrors
• •		Power heated double convex rear view mirrors
• •		Passenger workstation with 12V/120V receptacle and phone jack in console
• •		Aviation style sun visors
• •		Acrylic sun visors
• •		Hydraulic leveling jacks with dash mounted controls
• •		Generator hour meter and auxiliary start switch on dash
• •		Exterior temperature sensor
• •		Wraparound privacy curtain with easy reach wand
		APPLIANCES & ACCESSORIES
• •		6 cu. ft. double door refrigerator and pantry
• •		8 cu. ft. double door refrigerator and pantry
○ •		8 cu. ft. double door refrigerator with icemaker (with pantry)
○ •		10 cu. ft. double door refrigerator with icemaker (with pantry)
○ ○		21" high output three-burner cooktop with range/oven and flush mount Corian® range cover
• •		High output three burner cooktop with drawers below with flush mount Corian® range cover

SBRZ	SBLX	
• •		GE® SpaceSaver® microwave oven with built-in light and fan
○ ○		GE® SpaceSaver® convection microwave oven with fan and light
• •		Cable TV hook-up and multiple telephone jacks
• •		TV antenna
○ •		Home theater entertainment package: Includes an RCA® DVD digital receiver and subwoofer/speaker system
• •		RCA® 27" flat screen TV in cockpit
• •		RCA® DVD player
○ •		RCA® 19" TV with front A/V jacks in bedroom
• •		Video control box with antenna booster
○ •		Exterior entertainment package: Includes a 19" RCA® stereo TV, AM/FM stereo with CD on a swivel base located in an exterior compartment on a full-extension slide tray with two fixed speakers mounted by the exterior TV
• •		Pre-wired for the Kingdome® satellite dish
○ •		Kingdome® automatic stationary satellite dish
• •		Pre-wired for the Winegard® satellite dish
○ •		Winegard® satellite dish
• •		Pre-wired for a back up camera
• •		Pre-wired for a second 13,500 BTU roof air conditioner 1311 ONLY
		FURNITURE
○ ○		Kustom Fit® soft touch OptimaLeather® cockpit seating package including a soft touch OptimaLeather® 6-way power driver seat with swivel base and soft touch OptimaLeather® manual passenger seat with swivel base
• •		Kustom Fit® fabric driver recliner seat with swivel base
• •		Kustom Fit® fabric passenger recliner seat with swivel base
○ ○		Kustom Fit® fabric driver seat with 6-way power
• •		Kustom Fit® Wonder-Bed® fabric sleeper sofa with slide-in armrests
• •		Kustom Fit® freestanding fabric swivel recliner chair with footrest N/A 1311 AND 8311
		INTERIORS
		Throughout Coach
• •		Oak paneling and doors
• •		Telestrut hardware on overhead doors and positive catches on others
• •		Drawers with ball bearing roller guide design
		Cockpit Area
• •		Floormats
		Living Area
• •		Booth dinette with slide-out storage drawers
• •		Hutch and overhead with beveled mirrors 8360 ONLY
• •		Booth dinette
• •		Plush carpet with deluxe pad
• •		Day/night shades with designer valances
• •		Solid raised panel overhead cabinet doors and flat panel base cabinet doors
		Kitchen Area
• •		Slide-out pantry N/A 1341 AND 8341

SBRZ	SBLX	
• •		Corian® kitchen countertop with Corian® flush mount stove cover
○ ○		Corian® countertop extension N/A 8375
• •		Beveled mirror above galley backsplash
• •		Porcelain sink with wood cutting block sink cover
• •		Wastebasket
• •		Designer vinyl flooring
• •		Venetian mini-blind with valance N/A 1311 AND 8311
• •		Molded ABS silverware organizer
○ ○		12V variable speed Fan-Tastic® vent
		Bath Area
• •		Designer vinyl flooring
• •		Decorative shower glass etching
• •		Laminate lavy top with decorative edge
• •		Medicine cabinet
		Bedroom Area
• •		Plush carpet with deluxe pad
• •		Day/night shades with designer valances
• •		Cedar lining in wardrobe
• •		Wardrobe with mirrored sliding doors with shelf and doors below
• •		Bedspread, pillows and shams
• •		Large mirror on rear wall N/A 8360
• •		Slide-out queen bed with pull out drawers and storage compartment DRAWERS N/A ON 8360 AND 8375
• •		Slide-out queen bed with storage compartment
• •		"Sandpiper Deluxe" residential-style pillow top mattress (60" x 80")
		ELECTRICAL SYSTEMS & LIGHTS
• •		55 Amp MagneTek® solid state power converter and charger
○ ○		600 watt inverter
• •		50 Amp 120V distribution panel and cord
• •		12V push button circuit breaker distribution panel
• •		Onan® Marquis series generator
• •		Two 6V deep cycle house batteries
• •		Battery disconnect switch for house batteries
• •		Systems monitor panel
• •		Porch light with interior switch
• •		12V/120V patio receptacle and phone jack
• •		Recessed fluorescent and incandescent lights in ceiling with wall mounted switches
• •		Recessed fluorescent and incandescent lights in ceiling
• •		Designer light fixtures in living and bedroom areas
• •		Cosmetic light in bathroom
• •		Two water pump switches (kitchen and bath)
• •		Battery voltage meter in monitor panel
• •		GFI protected electrical circuit
• •		Courtesy light at entry door switch panel

SBRZ	SBLX	PLUMBING & LPG SYSTEMS
		Coach Exterior
•	•	Heated systems compartment with easy access to hook-ups
•	•	On Demand water system and water pump
•	•	Holding tank rinse system (black tank only)
•	•	Winterization anti-freeze inlet to pump
•	•	Outside shower
•	•	Water heater bypass valve
•	•	Pressurized water fill with integrated regulator
•	•	10 gallon, quick-recovery water heater with direct spark ignition (gas/electric)
•	•	Six gallon LPG water heater with electronic ignition
		Kitchen Area
•	•	Single lever chrome faucet with side sprayer
		Bath Area
•	•	One-piece fiberglass tub/shower
•	•	Dual lever brass-plated shower faucet, brass-braided hose, brass-plated head
•	•	Single lever brass lavy faucet
•	•	Dual lever brass lavy faucet

SBRZ	SBLX	SAFETY FEATURES
•	•	Daytime running lights
•	•	Driver and passenger three point seatbelts
•	•	Deadbolt lock on entry door
•	•	Fire extinguisher
•	•	Smoke, carbon monoxide (CO) and LPG detectors
•	•	Emergency exit window
		WINDOWS, DOORS & AWNINGS
◦	•	Dual pane radius tinted safety glass windows
•	•	Radius tinted safety glass windows
◦	•	Patio awning with metal cover (electric awning with triple slide units)
•	•	Radius entrance door with clear glass, shade and screen door
•	•	Power double entrance step with light and anti-skid surface
•	•	Power single entrance step with light and anti-skid surface
•	•	Ventilated windows on sides of slide-out rooms (lounge slides only)
•	•	Slide-out topper awnings
•	•	Toilet room window 1321, 8321 AND 8375
•	•	Tinted skylight in bathroom N/A 1311 AND 8311

SBRZ	SBLX	CLIMATE CONTROL
•	•	Thermostatically controlled dual 13,500 BTU ducted roof air conditioners (single 13,500 BTU roof air conditioner on 1311)
◦	•	13,500 BTU roof air conditioner 1311 ONLY
•	•	35,000 BTU electronic ignition furnace (dual 35,000/20,000 BTU electronic ignition furnace on 8360 and 8375)
•	•	Ducted heating system
•	•	12V roof exhaust fan in bathroom
•	•	Non-powered roof vent in bedroom
•	•	Dash automotive heating and air conditioning system with defroster

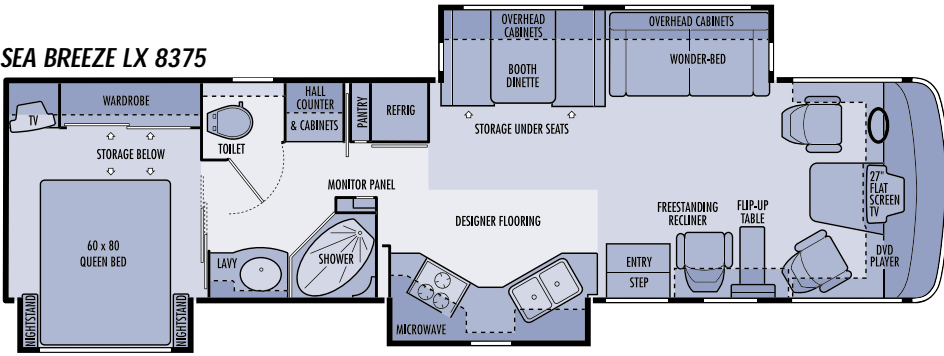
Sea Breeze

CHASSIS SPECIFICATIONS	SEA BREEZE FORD®	SEA BREEZE LX WORKHORSE®
Chassis	Ford® Super Duty (22,000 GVWR on 1341, 20,500 GVWR on 1311 and 1321)	W-22 (22,000 GVWR)
<i>Tires</i>	Goodyear® RV 245/70R 19.5F	Michelin® XRV 235/80 R22.5G
<i>Wheels</i>	19.5X6.75, 8-Lug Steel, SS Liner	22.5X6.75, 8-Lug Steel, SS Liner
<i>Brakes</i>	Hydro-Boost, 4-Wheel Disc ABS	Hydro-Boost, 4-Wheel Disc ABS
<i>Drive Axle Gear Ratio</i>	5.38:1	5.38:1
<i>Alternator</i>	115 Amp	130 Amp
<i>Chassis Batteries</i>	(1) 750 CCA	(1) 690 CCA
<i>Shock Absorbers</i>	Ford® Factory Installed Shock Absorbers	Tuned Monroe®
<i>Fuel Tank Capacity</i>	75 gallons	75 Gallons
<i>Hitch Capacity</i>	5,000 lbs. Class III	5,000 lbs. Class III**
<i>Chassis Warranty</i>	3 years/36,000 miles	3 years/36,000 miles
ENGINE	FORD® TRITON V-10	GM® VORTEC® 8100
<i>Displacement</i>	6.8 Liters (415 cu. in.)	8.1 Liters (496 cu. in.)
<i>Peak Horsepower</i>	310 HP @ 4,250 RPM	340 HP @ 4,200 RPM
<i>Peak Torque</i>	425 ft./lbs. @ 3,250 RPM	455 ft./lbs. @ 3,200 RPM
<i>Engine Warranty</i>	3 years/36,000 miles	3 years/36,000 miles
TRANSMISSION	FORD® 4R100	ALLISON® 1000
<i>Transmission Type</i>	4-Speed Automatic Overdrive	5-Speed Automatic Overdrive
<i>Transmission Warranty</i>	3 years/36,000 miles	3 years/unlimited miles

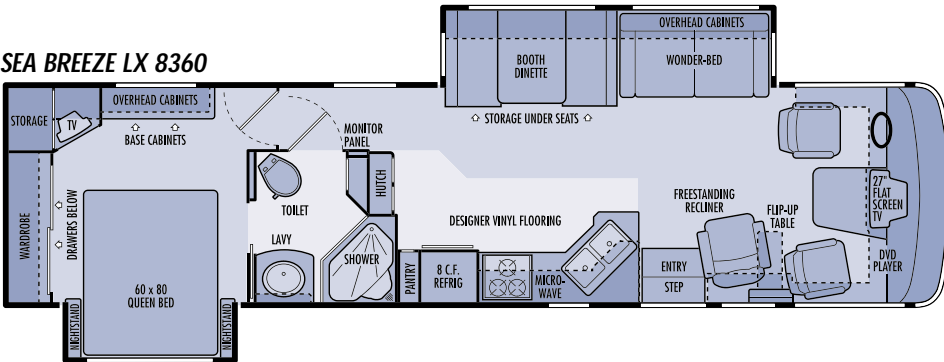
** Actual towing capacity is dependent on your particular loading and towing circumstances which includes GVWR, GAWR and GCWR as well as adequate trailer brakes. Please refer to your vehicle operator's manual for further towing information. Due to continued product improvement, National R.V., Inc. reserves the right to change materials, colors, specifications and prices at any time without notification. Copyright © 2004 by National R.V., Inc. 01/04

SEA BREEZE 2004 FLOORPLANS

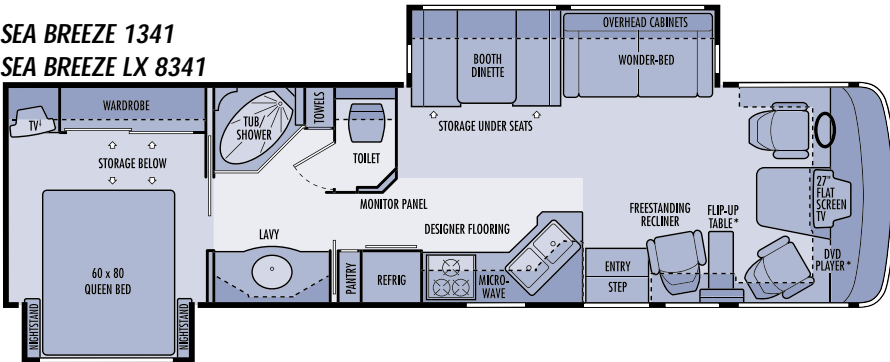
SEA BREEZE LX 8375



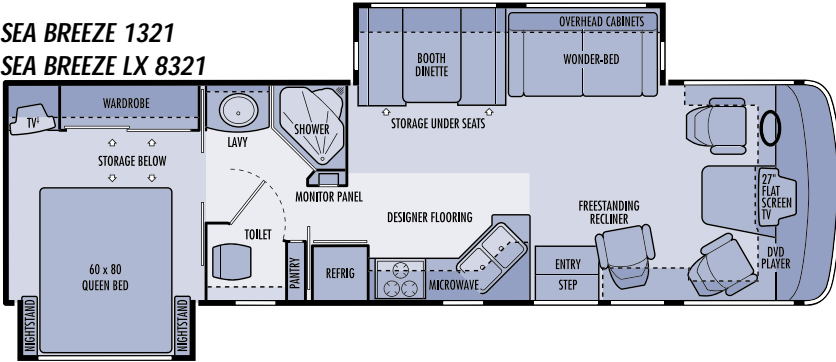
SEA BREEZE LX 8360



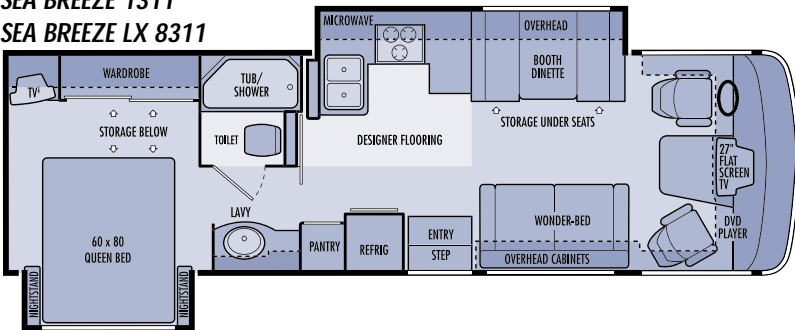
**SEA BREEZE 1341
SEA BREEZE LX 8341**



**SEA BREEZE 1321
SEA BREEZE LX 8321**



**SEA BREEZE 1311
SEA BREEZE LX 8311**



4 OPTIONAL FOR SEA BREEZE
* NOT INCLUDED ON 1341 SEA BREEZE FLOORPLAN

Due to continued product improvement, National R.V., Inc. reserves the right to change materials, colors, specifications and prices at any time without notification. Copyright © 2004 by National R.V., Inc. 01/04