



2004 NORTHERN STAR

DIESEL PUSHER BY NEWMAR

DESTINATION:

California Coast



SPECIFICATIONS

STANDARD FEATURES

MOTORIZED CHASSIS FEATURES

- Freightliner® Chassis
- Aluminum Wheels
- Anti-Lock Braking System
- Backup Alarm
- Cruise Control
- Recessed Fuel Fills, with Crossover to Fill from Either Side
- Tilt and Telescoping Steering Wheel

AIR CONDITIONING & HEATING

- Two 13.5M Penguin® Heat Pump Air Conditioners
- Dash Heater and High-Output Air Conditioner
- LP Furnace with In-Floor Ducted Heat
- LP Leak Detector
- Wall-Mounted Sensors for Heating and Air Conditioning

APPLIANCES & ACCESSORIES

- Ten-Gal. Gas/Electric Water Heater with Direct-Spark Ignition
- 30" Convection Microwave with Three-Burner Cooktop
- 20" Flat-Screen Color TV in Bedroom Area
- 24" Flat-Screen Color TV in Living Area
- Air Horns
- AM/FM Dash Radio with CD Player
- Cable TV Connection with RG 6 Coax
- Carbon Monoxide Detector
- Ceiling Fan in Bedroom
- Dometic® 1402 Size Wise Refrigerator with Ice Maker (13.8 Cu. Ft.)
- Exterior TV Jack on Door Side
- Interior Rearview Mirror with Electronic Compass and Temperature Display
- On/Off Switch for Bedroom Speakers
- Prep for Compact Washer/Dryer
- Range Cover of Matching Countertop Material
- Rearview Monitor System
- Satellite Prep—Phone, TV Jack and Recept
- Surround Sound System with VCR, DVD Player and Subwoofer
- Telephone Connection with Phone Jacks in Living and Dash Area
- TV Antenna with Power Lift, One Exterior and Two Interior Jacks

CABINETS & FURNITURE

- Oak Hardwood Cabinets with Raised-Panel Arched Doors
- Ultra-Leather Swivel Rocker Recliner or L-Lounge—See Floor Plan Drawing
- Ultra-Leather Front Seats with Six-Way Power, Power Lumbar and Ergo-Flex Arms, Oversize Passenger Seat with Footrest
- Luxurious Pillow Top Mattress
- Flexsteel® Furniture
- Carpet on Wardrobe Bottoms with Pearl Cream Headliner on Shelves and Overhead Cabinets
- Corian® Countertop in Bathroom with Porcelain Bowl

- Corian Countertop in Kitchen with Undermount Acrylic Sink and Flush Sink Covers
- Countertop Extension—Standard on Most Floor Plans
- Drawers with Metal Guides
- Hidden Leaf Dinette Table with Two Fixed Chairs and Two Folding chairs
- Lifts on Bed Top to Access Storage Area
- Molded Silverware Divider Tray

ELECTRICAL FEATURES

- Four 6-volt House Batteries
- Battery Disconnect, for House Batteries
- 7.5 Onan® Diesel Quiet Series Generator
- 110-volt and 12-volt Power to Slideout
- 110-volt Exterior Recept on Door Side
- 5-watt Solar Panel to Charge Chassis Battery
- 50-amp Electrical Service with Flexible Cord
- 75-amp Converter
- Driving Lights
- Emergency Engine Start Switch
- Exterior Security Lights, One Installed on Each Side
- Fluorescent Lights in Ceiling and Overhead Cabinets
- LCC Light Flasher Switch
- Interior Courtesy Lights
- Lights in Exterior Storage Compartments
- Lights in Wardrobes with Automatic Switches
- Midship Side Turn Signals
- Recessed Docking Lights
- Slideout Information Voice Module
- Switched Recept for Engine Block Heater
- Two 12-volt Auxiliary Recepts on Dashboard

EXTERIOR FEATURES

- Brite Tek® Roof with 7 mm Decking
- Convex Exterior Mirrors with Remote Control and Defrost
- Exterior Storage Compartments Finished with Cargo Liner
- Front Protective Film
- Gas Struts on Exterior Compartment Doors
- Gel-coated Fiberglass End Caps
- Gel-coated Fiberglass Exterior Sides
- Hitch for Towing Car, with Two Extra 14-Gauge Wires for Customer Use—6,000 lb. Rating
- Hydraulic Leveling Jacks with Touch Manual Control and Air Dump
- Mud Flaps
- Full Paint Exterior Graphics with Clear Coat Finish
- Rear Protective Tow Guard with Stainless Steel Newmar Name Cutout
- Undercoating

INTERIOR FEATURES

- Lined Day/Night Pleated Window Shades and Lambrequins
- Padded Vinyl Ceiling
- Quilted Bedspread with Reverse Sham and Accent Pillow
- Simulated Ceramic Floor in Kitchen, Bathroom and Between Driver and Passenger Seats
- Carpeting in Living Room and Bedroom Areas
- Hardwood/Fabric Fascia on Living Area Slideout
- High-Density Carpet Pad
- Smoke Detector and 10 BC Fire Extinguisher
- Sun Shades on Driver- and Passenger-Side Windows
- Mini Blind Window Shades in Kitchen Area
- Interior Assist Handle at Main Entrance Door
- Dash Panel Color-Coordinated Abs

PLUMBING & BATH FEATURES

- Bath Accessories, Two Towel Bars, Tissue Holder and Robe Hook
- Demand Water System with Shurflo® Pump
- Exterior Shower, Located on Off-Door Side
- Fiberglass Tub/Shower with Glass Shower Door
- Sealand® 500+ China Stool
- Sewage Holding-Tank Rinse
- Water Filter with Drink Dispenser at Kitchen Sink
- Water-Heater Bypass System
- Water Pump Switches, Located in Bathroom, Above Entrance Door, and Exterior, Near Gate Valves

CONSTRUCTION FEATURES

- 5/8" Foam Insulation Laminated in Sidewalls and Ceiling
- Aluminum-Frame Sidewalls and Roof Construction, 16" On Center
- Power Lock Arms on All Slideout Rooms
- R7 Fiberglass Insulation in Sidewalls and Floor, R11 in Roof

WINDOWS, AWNING & VENTS

- Double-Pane, Tinted Safety-Glass Windows
- Automatic Double Entrance Door Step
- Fan-Tastic® Vent in Bathroom Above Tub/Shower Area
- Fan-Tastic Vent with Rain Sensor in Bathroom
- Fan-Tastic Vent with Rain Sensor in Kitchen Area
- A & E® 9000 Window Awnings on Bedroom and Slideout Windows
- A & E Oasis Power Front Entrance Door Awning
- A & E Slideout Covers
- A & E Weather Pro Power Awning
- Front Entry Door with Flush Power Stepwell Cover
- Lighted Acrylic Assist Handle at Entrance Door

OPTIONAL FEATURES

APPLIANCES & ACCESSORIES

- CB Radio
- 100-lb. Norcold® Freezer on Pullout Tray
- Extra Interior Telephone Jack
- Compact Washer/Dryer
- Winegard® Automatic Satellite Dish without Receiver
- Winegard Manual Satellite Dish without Receiver
- KVH® In-Motion Satellite Dish without Receiver
- KVH Automatic Satellite Dish without Receiver
- KVH L-3 In-Motion Satellite Dish without Receiver
- Norcold Four-Door Refrigerator
- Winegard In-Motion Satellite Dish without Receiver
- Navigation System
- XM Radio Capability
- KVH L-3 In-Motion Satellite and Tracknet® Dish, without Receiver
- External Flat-Screen TV and AM/FM CD Radio

CABINETS & FURNITURE

- Coastal Cherry Hardwood Cabinets
- Summer Maple Hardwood Cabinets
- Ultra-Leather Sofa
- Storage Shelves Recessed into Rear Cap
- Ultra-Leather Freestanding Swivel Rocker Recliner ILO Standard—Available on 3930
- Combination Desk/Dinette Table in lieu of Standard
- Built-In Booth Dinette

ELECTRICAL FEATURES

- Trace 2000-watt Inverter
- Roof-Mounted Spot Light
- Solar Prep, Wire from Roof to Battery Compartment
- Extra Interior 110-volt Recept
- Extra 12-volt Recept
- 400-watt Inverter for Dash TV
- Pre-Wire for Freezer with 110-volt Recept and 12-volt Line

EXTERIOR FEATURES

- Rear Ladder
- Small Storage Tray
- Large Storage Tray with Access from One Side
- One-Piece Molded Fiberglass Roof with 7 mm Decking

INTERIOR FEATURES

- Front Entry Floor Mat—Not Available with Ceramic Tile Option Between Driver and Passenger Seats
- Ceramic Floor Tile in Kitchen, Bath and Between Driver and Passenger Seats

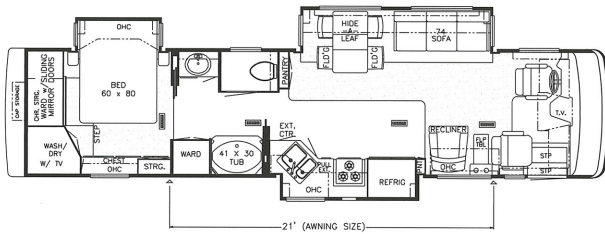
PLUMBING/BATH FEATURES

- Heat Pads for Holding Tanks
- Water Filter for Entire Unit
- Assist Handle in Tub/Shower
- Fold-Down Shower Seat—Available on Floor Plans with Shower

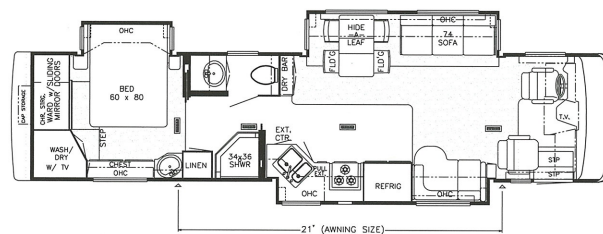
WINDOWS, AWNINGS & VENTS

- State Seal for NE, OR, TN, WA
- CSA Approval for Canadian Dealers Only
- Customer Pickup at Newmar Factory

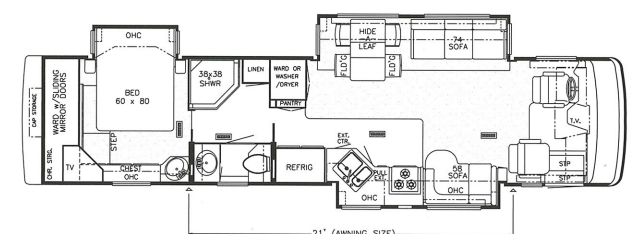
FLOOR PLANS



Model Shown: NSDP 3930



Model Shown: NSDP 3931



Model Shown: NSDP 3932

FLOOR PLAN SPECIFICATIONS

APP. OVERALL LENGTH	WIDTH	APP. OVERALL HEIGHT	INTERIOR WIDTH	INTERIOR HEIGHT	GREY	SEWAGE	WATER	LP	FURNACE	WATER HEATER
39' 5"	101.5"	12' 11"	95.5"	89"	65 gal.	45 gal.	105 gal.	32 gal.	42,000 Btu	10 gal.

FREIGHTLINER CHASSIS SPECIFICATIONS

ENGINE HP	AXLE RATIO	FUEL CAP.	WHEEL BASE	*FRONT GAWR	*REAR GAWR	*GVWR	*GCWR	APP. UVW	APP. NCC
350	4.78	100 gal.	252"	12,000 lb.	19,000 lb.	31,000 lb.	41,000 lb.	24,652 lb.	6,348 lb.

Lengths, Heights, Widths and Dry Weights are approximate. Weight will vary based on optional equipment added to the above base weight.

GAWR: Gross Axle Weight Rating is the maximum permissible weight for an axle.

GVWR: Gross Vehicle Weight Rating is the maximum permissible weight of a fully loaded motorhome.

GCWR: Gross Combination Weight Rating is the value specified by the manufacturer of the vehicle as the maximum allowable loaded weight of motorhome and any towed trailer or towed vehicle.

UVW: Unloaded Vehicle Weight is the weight of this motorhome as built at the factory with full fuel, engine oil and coolants. The UVW does not include cargo, fresh water, LP-gas or dealer-installed accessories.

NCC: Net Carrying Capacity is the maximum weight of all occupants, including the driver, personal belongings, food, fresh water, waste water, LP-gas, tools, tongue weight of towed vehicle, dealer-installed accessories, etc., that can be carried by the motorhome.

* Specifications supplied by chassis manufacturer.



A



B



C

EXTERIOR COLORS

A. Night Sky
B. Gold Dust

C. Moss

FULL-PAINT MASTERPIECE FINISH™

The Full-Paint Masterpiece Finish from Newmar creates an exterior of stunning beauty and incredible endurance—a true work of art. Newmar is an industry leader in applying full body paint to its coaches. We are pleased to offer it as an option on your Northern Star Diesel Pusher.

NEWMARCORP.COM

Here you'll discover the latest model specifications, floor plans and options, as well as information on who we are, how we work and what we believe in.



A



B



C

INTERIOR COLORS

A. Night Sky
B. Gold Dust

C. Moss



NEWMAR QUALITY: A WAY OF LIFE

NEWMAR CORPORATION
355 N DELAWARE ST
PO BOX 30
NAPPANEE IN 46550-0030
574-773-7791 Fax 574-773-2895
www.newmarcorp.com