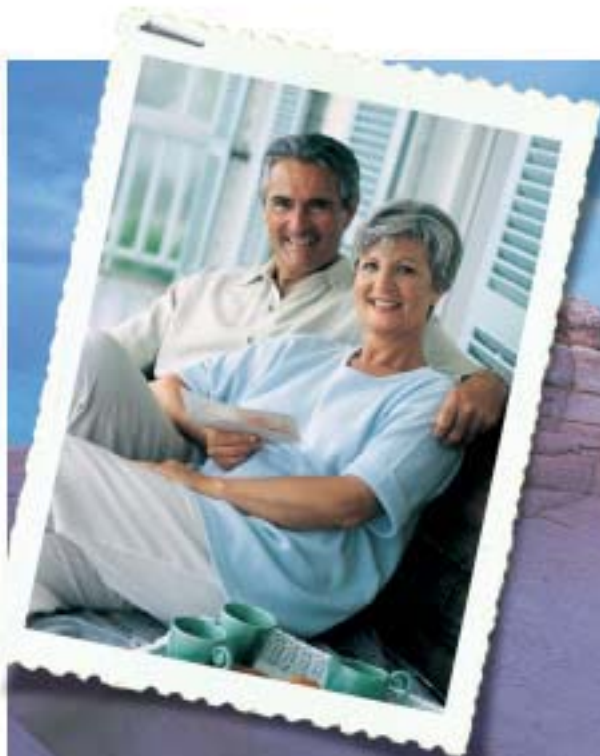


2004 SCOTTSDALE
CLASS A BY NEWMAR



2004 SCOTTSDALE

CLASS A BY NEWMAR

DESTINATION:

Red Rocks in June



NEWMARCORP.COM

These towering rust-colored cliffs just beg to be photographed.



It's like a force of nature. Powerful. Imposing. Demanding respect. Yet, like nature, it has its gentle side, too. Such is the appeal of Newmar's Scottsdale Class A motorhome. Its standard features set a whole new standard for balancing luxury and practicality. Now, this year, Scottsdale ups the ante on travel pleasure with a number of extraordinary options, including an exterior entertainment center ...a seamless fiberglass roof...and a 5.5 Onan® generator for added power when and where it's needed. So travel boldly. It's in Scottsdale's nature to keep you going—comfortably and stylishly.





3456/Latte



B

3670/Willow Green

- A. Fix a feast or a light snack: Generous cabinets and countertop space increase the Scottsdale kitchen's utility.
- B. This handy countertop extension flips up when you need it, stows down flat against the cabinet side when you don't.
- C. Since the sink cover sits flush with the countertop, your food-prep surface area is significantly expanded.
- D. The stove burners are "sealed" so they don't trap food, which makes cleanups quick and easy.



C

3257/Candlelight



D

3257/Candlelight

JUNE 23 ~

*Jim was certainly happy. The park has 10 nature trails. Ranger-guided tours
set out at 10 a.m., every day, and Jim made sure we were the first in line.*



A



3670/Willow Green



B

- A. The living room slideout opens up floor space while elegant window treatments and plush seating lend cozy comfort.
- B. Ergonomic Flexsteel® captain's chairs and a well-designed dashboard put you in firm command of the road.
- C. There's plenty of room to relax here, with the booth dinette and Flexsteel sofa conveniently situated in the slideout.
- D. This XM Satellite Radio-ready Sony® sound system will surely be "music to your ears." XM Satellite Radio is optional.



C

3257/Candlelight



D

JUNE 26 ~

The ranger led us up to Eagle's Nest overlook this morning. It's the highest point in the park, and WOW, what a view!



A



B

3257/Candlelight



C

3670/Willow Green

- A. A mirrored wardrobe is one of this bedroom's most attractive and convenient features.
- B. The Scottsdale's bathroom amenities include an easy-to-clean, one-piece-fiberglass shower surround.
- C. The warmth and richness of this bedroom is surpassed only by the comfort of its queen-size bed.
- D. Deep cabinet drawers—and plenty of them—ensure that you can bring all of your favorite travel clothes with you.
- E. Standard in this bedroom is this advanced 19" Philips Magnavox® color TV with its own built-in cabinet shelf.



D

3456/Latte



E

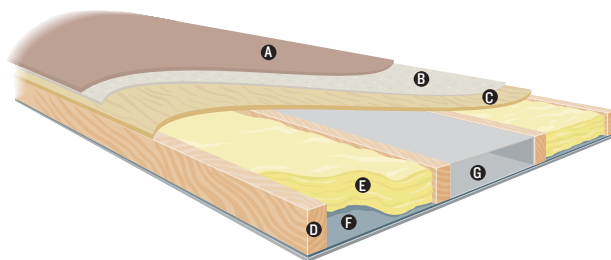
3456/Latte

NEWMAR'S FREEDOM WARRANTY™

Your Scottsdale Class A motorhome is built to take you as far as your road rolls on... for as long as you roll on with it. Because there's more than enough solid engineering here to ensure years of travel pleasure.

Scottsdale is assembled on the same production line, to the same exacting standards and with the same meticulous care, as all Newmar motorhomes. It also embodies Newmar's long history of product innovation and industry "firsts." For us, it's a matter of pride. And tradition. Of taking personal responsibility and building a product that each of us, ourselves, would want to own.

As proof of our commitment, we back every motorhome we make with a three-year/36,000-mile, bumper-to-bumper limited warranty: The Newmar Freedom Warranty. Ask your dealer for details. You're sure to find coverage this comprehensive a truly liberating experience.

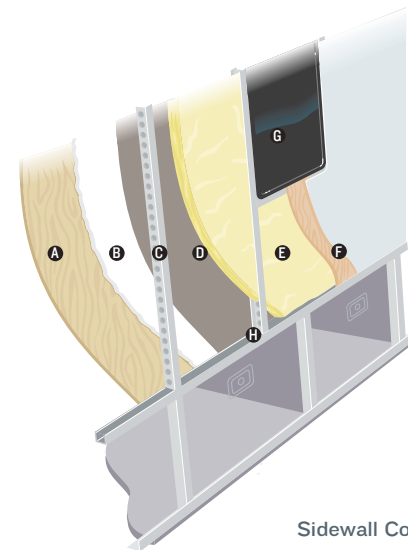


Floor Construction

- A. Plush carpet*
- B. Carpet padding
- C. 5/8" floor decking
- D. 2" x 3" wood stringer

- E. Fiberglass batten insulation
- F. Polyethylene moisture barrier
- G. In-floor heating ducts

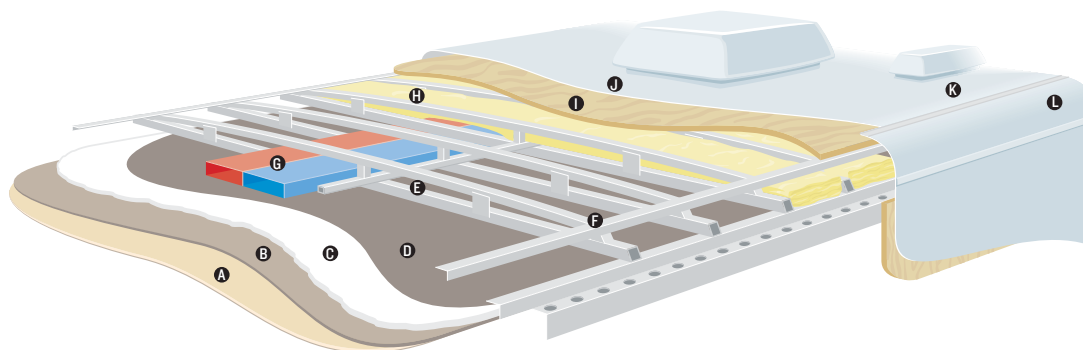
**Ceramic tile, simulated floor and simulated tile options also available.*



Sidewall Construction

- A. Plywood interior wallboard
- B. 5/8" bead foam
- C. 1.5" C-channel aluminum studs with punched holes
- D. Kraft paper vapor barrier
- E. Fiberglass insulation

- F. Composite one-piece gel coat exterior sidewall
- G. Framed windows
- H. Aluminum sidewall structure with I6" on-center framing



Roof Construction

- A. Woven cloth
- B. 3/16" panel
- C. 5/8" bead foam
- D. Kraft paper vapor barrier

- E. 1" tubular aluminum truss rafter with full joint weld
- F. Welded aluminum crowned roof structure with I6" on-center framing

- G. True Central Air Conditioning—insulated ducted distribution and return
- H. Fiberglass batten insulation
- I. 7mm wood decking

- J. Brite-Tek or fiberglass roof
- K. One-piece fiberglass caps
- L. Aluminum or fiberglass wrap—additional aluminum reinforced extrusion connecting sidewall to roof for most slideouts



A



B



C



D



E

EXTERIOR FEATURES

- A. Halogen headlamps
- B. Cleanly integrated foglamps
- C. Large, powered sideview mirrors

- D. Accommodating storage compartments with hydraulic piston-supported doors
- E. Attractive fiberglass end cap

JUNE 27 ~

The variety of plants and wildlife here is incredible. I couldn't have asked for a better place to enjoy my bird watching.



A



B



C



D

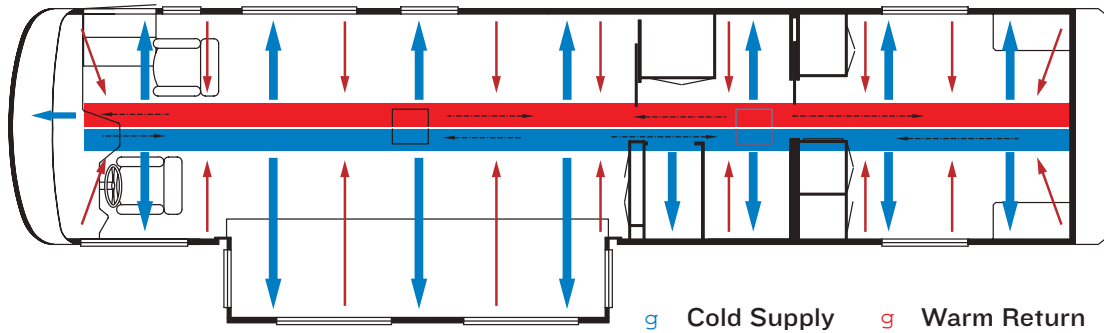
INTERIOR COLORS

A. Candlelight
B. Latte

C. Frosted Lilac
D. Willow Green

NEWMARCORP.COM

Here you'll discover the latest model specifications, floor plans and options, as well as information on who we are, how we work and what we believe in.



TRUE CENTRAL AIR: Newmar's True Central Air System—standard with every Newmar RV—is just like those found in most site-built homes. It's actually two separate, fully ducted systems: one to distribute incoming cool air, the other to quickly and effectively remove warm air from every living area.



EXTERIOR COLORS

- A. Candlelight
- B. Willow



A NEW BREED.™
www.workhorse.com

Wonder where our next road will lead?

THE NEWMAR KOUNTRY KLUB

As a Newmar owner, you qualify for membership in the Newmar Kountry Klub. Join your local chapter, and just look at the perks you'll enjoy: friendship, fun and adventure with other Newmar owners • rallies and caravans • special RV show events • discounts on RV services • a free monthly Klub magazine • Klub merchandise. And that's just for starters.

Join today! Call 877-639-5582, toll-free, or visit the Klub section of newmarcorp.com.

THE NEWMAR FACTORY TOUR

We'd love to have you visit our state-of-the-art production facility in Nappanee, Indiana. For details, including tour days and times, please call 574-773-7791.

NEWMAR CORPORATION
355 N DELAWARE ST
PO BOX 30
NAPPANEE IN 46550-0030
574-773-7791 Fax 574-773-2895
www.newmarcorp.com

Official Newmar Dealer:



NEWMAR QUALITY: A WAY OF LIFE

Some features shown in our literature are optional. Colors and finishes are photographic representations. The actual materials may look different. Prices, specifications and floor plans are subject to change at Newmar's discretion without prior written notice or obligation. Please see your dealer for actual samples and specifications. © 2003 Newmar Corporation. Printed in the U.S.A. (05/03)

2004 SCOTTSDALE

CLASS A BY NEWMAR



2004 SCOTTSDALE

CLASS A BY NEWMAR

DESTINATION:

Red Rocks in June



NEWMARCORP.COM

SPECIFICATIONS

STANDARD FEATURES

MOTORIZED CHASSIS FEATURES

- Cruise Control
- Stainless Steel Wheel Simulators
- Tilt Steering Wheel
- Ford® F-53 Chassis

AIR CONDITIONING & HEATING

- 15,000-Btu Brisk® Central Air Conditioner
- LP Leak Detector
- Dash Heater and High-Output Air Conditioner

APPLIANCES & ACCESSORIES

- Six-Gal. Gas/Electric Water Heater with Direct-Spark Ignition
- Spacesaver Microwave
- Flat-Screen Color TV in Living Area
- Color TV in Bedroom
- Three-Burner Recessed Range with Glass Oven Door and Piezzo Ignition
- AM/FM Dash Radio with CD Player
- Dometic® 3862 Refrigerator (8 Cu. Ft.)
- Rearview Monitor Prep
- TV Antenna with Power Booster, One Exterior Jack and Two Interior Jacks
- VCR and TV Video Selector Switch
- Cable TV Connection with RG 6 Coax
- Satellite Prep (Phone, TV Jack and Recept)
- Speaker Switch System
- Range Cover of Matching Countertop Material

CABINETS & FURNITURE

- Flexsteel® Swivel and Recline Driver/Passenger Seats
- Flexsteel Swivel Rocker Recliner
- Flexsteel Sofa
- Drawers with Metal Guides
- Hidden-Leaf Dinette Table with Two Fixed Chairs and Two Folding Chairs
- Oak Hardwood Raised-Panel Cabinet Doors
- Corian® Countertop in Kitchen with Undermount Acrylic Sink and Flush Sink Covers
- Laminate Countertop in Bathroom with Porcelain Lavatory
- Lifts on Bed Top To Access Storage Area

ELECTRICAL FEATURES

- 55-amp Converter
- Battery Disconnect for House Batteries
- 4,800-watt Guardian® Generator with One Remote Switch
- Five-watt Solar Panel to Charge Chassis Battery
- Emergency Engine Start Switch
- Exterior Security Lights, One Installed on Each Side
- Lights in Exterior Storage Compartments
- Lights in Wardrobes
- Two 12 V House Batteries on Pullout Tray
- 30-amp Electrical Service
- Driving Lights

EXTERIOR FEATURES

- BriteTek® Roof with 7mm Decking
- Convex Exterior Mirrors with Remote Control and Defrost
- Gel-Coated Fiberglass Exterior Sides
- Class 3, 5,000 lb. Hitch

INTERIOR FEATURES

- Day/Night Pleated Window Shades and Lambrequins
- Woven Soft Touch Ceiling
- Vinyl Floor in Kitchen and Bathroom Areas
- Quilted Bedspread with Reverse Sham and Pillow
- Hardwood/Fabric Fascia on Living Area Slideout

PLUMBING & BATH FEATURES

- Monitor Panel
- Sewage Holding-Tank Rinse
- SeaLand® 500+ China Stool
- Water-Heater Bypass System
- Demand Water System with Shurflo Pump

CONSTRUCTION FEATURES

- Aluminum-Frame Sidewalls and Roof Construction, 16" On Center
- Roof R-Value Rating: 16
- Sidewall R-Value Rating: 11
- Floor R-Value Rating: 11
- R7 Fiberglass Insulation in Sidewalls, Floor and Roof
- 5/8" Foam Insulation Laminated in Sidewalls and Ceiling

WINDOWS, AWNINGS & VENTS

- Tinted Safety-Glass Windows
- Automatic Double Entrance-Door Step
- Power Vent in Bathroom with Wall Switch
- Fan-Tastic® Vent with Rain Sensor in Kitchen Area
- Skylight in Bathroom
- Lighted Acrylic Assist Handle at Entrance Door

OPTIONAL FEATURES

MOTORIZED CHASSIS FEATURES

- Workhorse® W-22 Chassis

APPLIANCES & ACCESSORIES

- CB Radio (2 lb.)
- Ceiling Fan in Bedroom (10 lb.)
- Icemaker Added To Refrigerator (5 lb.)
- 10-Gal. Gas/Electric Water Heater With Direct-Spark Ignition (10 lb.)
- External Entertainment Center (40 lb.)
- XM Satellite Radio Capability (2 lb.)
- Dometic® 1062 Refrigerator (10 Cu. Ft., 91 lb.)
- Norcold® Four-Door Refrigerator (45 lb.)

CABINETS & FURNITURE

- Maple Cream Cabinets
- Arnold Cherry Cabinets
- Six-Way Power Driver's Seat (16 lb.)
- Built-In Booth Dinette (23 lb.)
- Ultra Leather Cirrus Swivel Rocker Recliner in Lieu of Standard (68 lb.)
- Ultra Leather Cirrus Driver/Passenger Seats with Six-Way Power, Power Lumbar and Ergo Flex Arms (50 lb.)

ELECTRICAL FEATURES

- 400-watt Inverter for Dash TV (10 lb.)
- Exterior Security Lights, Two Installed on Each Side (2 lb.)

EXTERIOR FEATURES

- Rear Ladder (4 lb.)

INTERIOR FEATURES

- 12" Marble-Look Floor Tile in Kitchen and Main Bathroom Areas (20 lb.)
- Simulated Plank Floor in Kitchen and Main Bathroom Areas (71 lb.)
- Sun Shade on Driver and Passenger Side Windows (4 lb.)

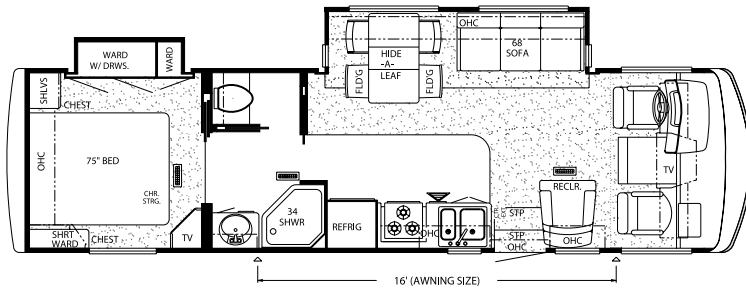
PLUMBING & BATH FEATURES

- Exterior Shower, Located On Off-Door Side (2 lb.)

WINDOWS, AWNINGS & VENTS

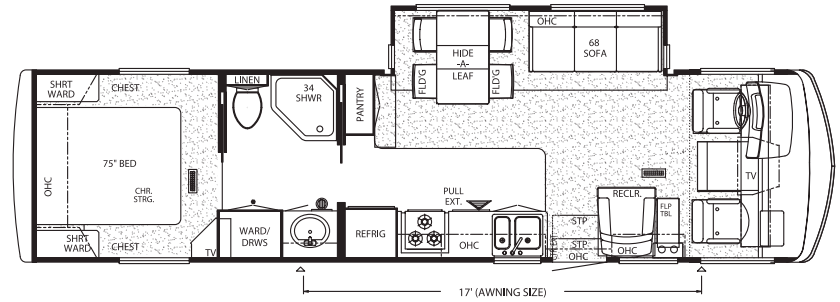
- Driver's-Side Door with Power Window (50 lb.)
- Double-Pane Tinted Safety-Glass Windows (125 lb.)

FLOOR PLANS



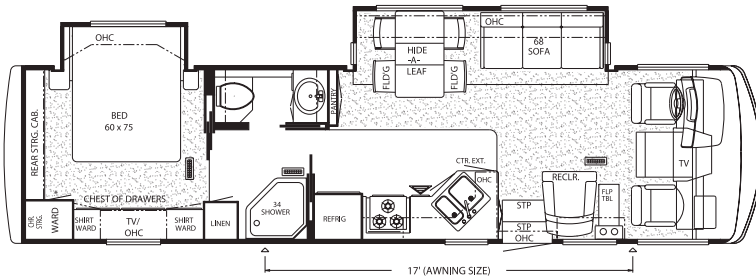
Model Shown: SD3257

Floor Plan Options: K273



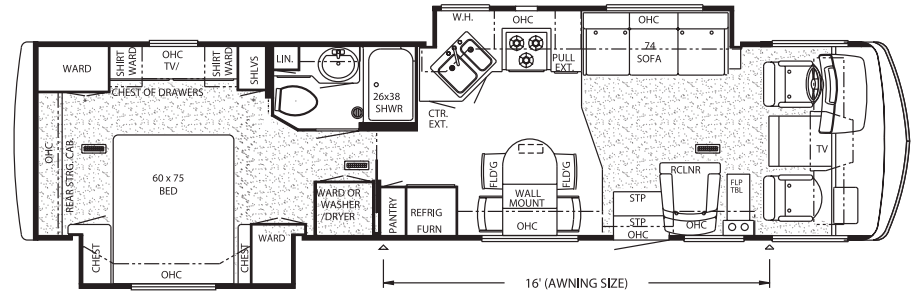
Model Shown: SD3455

Floor Plan Options: K210, K273



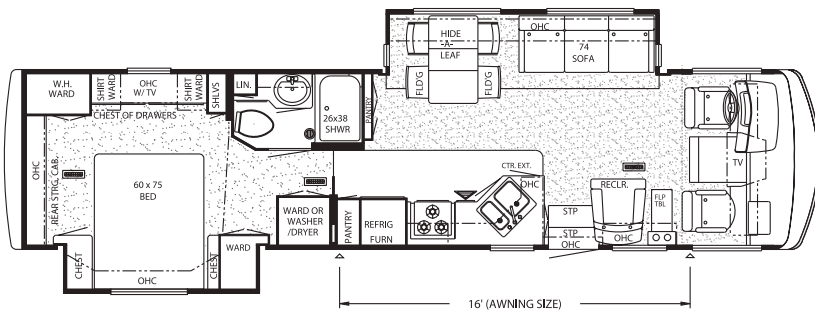
Model Shown: SD3456

Floor Plan Options: K273



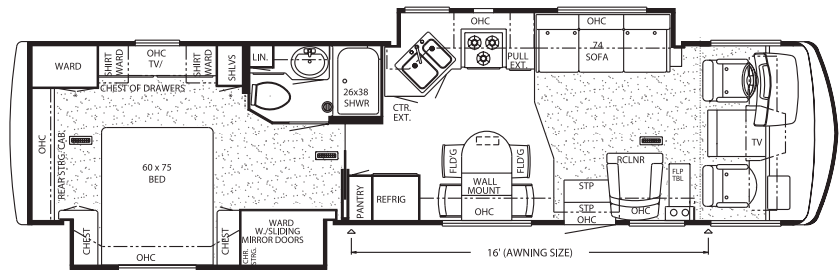
Model Shown: SD3601

Floor Plan Options: K276



Model Shown: SD3602

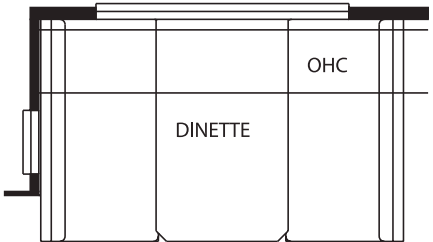
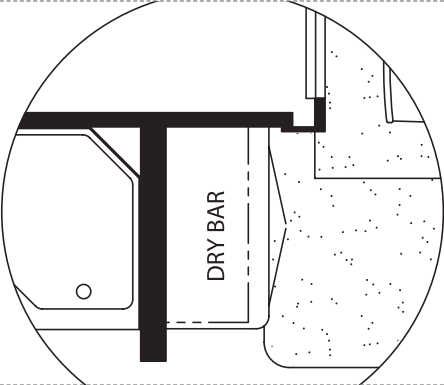
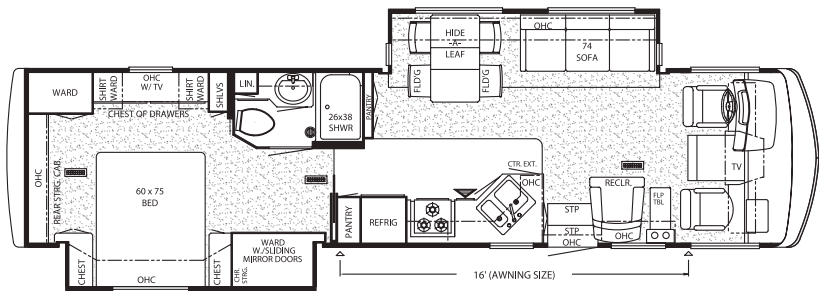
Floor Plan Options: K273



Model Shown: SD3666

Floor Plan Options: K276

FLOOR PLANS AND FLOOR PLAN OPTIONS

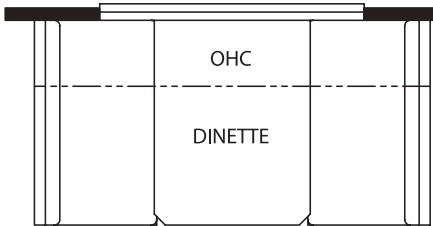


Model Shown: SD3670

Floor Plan Options: K273

K210: DRY BAR
3455

K273: BOOTH DINETTE WITH DRAWERS
3257, 3455, 3456, 3602, 3670



K276: BOOTH DINETTE WITH DRAWERS
3601, 3666

FLOOR PLAN SPECIFICATIONS

FLOOR PLAN	APP. OVERALL LENGTH	WIDTH	APP. OVERALL HEIGHT	INTERIOR WIDTH	INTERIOR HEIGHT	GREY	SEWAGE	WATER	LP	FURNACE	WATER HEATER.
SDCA 3257	33' 4"	100"	11' 11"	94"	78"	50 gal.	40 gal.	75 gal.	25 gal.	35,000 Btu	6 gal.
SDCA 3455	35'	100"	11' 11"	94"	78"	50 gal.	40 gal.	75 gal.	25 gal.	35,000 Btu	6 gal.
SDCA 3456	35'	100"	11' 11"	94"	78"	50 gal.	40 gal.	75 gal.	25 gal.	35,000 Btu	6 gal.
SDCA 3601	37' 4"	100"	11' 11"	94"	78"	50 gal.	40 gal.	75 gal.	25 gal.	42,000 Btu	6 gal.
SDCA 3602	37' 4"	100"	11' 11"	94"	78"	50 gal.	40 gal.	75 gal.	25 gal.	42,000 Btu	6 gal.
SDCA 3666	37' 4"	100"	11' 11"	94"	78"	50 gal.	40 gal.	75 gal.	25 gal.	42,000 Btu	6 gal.
SDCA 3670	37' 4"	100"	11' 11"	94"	78"	50 gal.	40 gal.	75 gal.	25 gal.	42,000 Btu	6 gal.

CHASSIS SPECIFICATIONS

FORD CHASSIS INFORMATION (STANDARD)

FLOOR PLAN	ENGINE HP	AXLE RATIO	FUEL CAP.	WHEEL BASE	*FRONT GAWR	*REAR GAWR	*GVWR	*GCWR	APP. UVW	APP. NCC
SDCA 3257	310	5.38	75 gal.	200"	7,500 lb.	14,500 lb.	22,000 lb.	26,000 lb.	16,904 lb.	5,096 lb.
SDCA 3455	310	5.38	75 gal.	216"	7,500 lb.	14,500 lb.	22,000 lb.	26,000 lb.	16,784 lb.	5,216 lb.
SDCA 3456	310	5.38	75 gal.	216"	7,500 lb.	14,500 lb.	22,000 lb.	26,000 lb.	17,736 lb.	4,264 lb.
SDCA 3601	310	5.38	75 gal.	228"	7,500 lb.	14,500 lb.	22,000 lb.	26,000 lb.	17,998 lb.	4,002 lb.
SDCA 3602	310	5.38	75 gal.	228"	7,500 lb.	14,500 lb.	22,000 lb.	26,000 lb.	17,980 lb.	4,020 lb.
SDCA 3666	310	5.38	75 gal.	228"	7,500 lb.	14,500 lb.	22,000 lb.	26,000 lb.	17,998 lb.	4,002 lb.
SDCA 3670	310	5.38	75 gal.	228"	7,500 lb.	14,500 lb.	22,000 lb.	26,000 lb.	17,980 lb.	4,020 lb.

WORKHORSE CHASSIS INFORMATION (OPTIONAL)

FLOOR PLAN	ENGINE HP	AXLE RATIO	FUEL CAP.	WHEEL BASE	*FRONT GAWR	*REAR GAWR	*GVWR	*GCWR	APP. UVW	APP. NCC
SDCA 3257	340	4.78	75 gal.	200"	8,000 lb.	14,500 lb.	22,000 lb.	26,000 lb.	17,129 lb.	4,871 lb.
SDCA 3455	340	4.78	75 gal.	216"	8,000 lb.	14,500 lb.	22,000 lb.	26,000 lb.	17,039 lb.	4,961 lb.
SDCA 3456	340	4.78	75 gal.	216"	8,000 lb.	14,500 lb.	22,000 lb.	26,000 lb.	17,991 lb.	4,009 lb.
SDCA 3601	340	4.78	75 gal.	228"	8,000 lb.	14,500 lb.	22,000 lb.	26,000 lb.	18,253 lb.	3,747 lb.
SDCA 3602	340	4.78	75 gal.	228"	8,000 lb.	14,500 lb.	22,000 lb.	26,000 lb.	18,235 lb.	3,765 lb.
SDCA 3666	340	4.78	75 gal.	228"	8,000 lb.	14,500 lb.	22,000 lb.	26,000 lb.	18,253 lb.	3,747 lb.
SDCA 3670	340	4.78	75 gal.	228"	8,000 lb.	14,500 lb.	22,000 lb.	26,000 lb.	18,235 lb.	3,765 lb.

Lengths, Heights, Widths and Dry Weights are approximate. Weight will vary based on optional equipment added to the above base weight.

GAWR: Gross Axle Weight Rating is the maximum permissible weight for an axle.

GVWR: Gross Vehicle Weight Rating is the maximum permissible weight of a fully loaded motorhome.

GCWR: Gross Combination Weight Rating is the value specified by the manufacturer of the vehicle as the maximum allowable loaded weight of this motorhome and any towed trailer or towed vehicle.

UVW: Unloaded Vehicle Weight is the weight of this motorhome as built at the factory with full fuel, engine oil and coolants. The UVW does not include cargo, fresh water, LP-gas or dealer-installed accessories.

NCC: Net Carrying Capacity is the maximum weight of all occupants, including the driver, personal belongings, food, fresh water, waste water, LP-gas, tools, tongue weight of towed vehicle, dealer-installed accessories, etc., that can be carried by the motorhome.

* Specifications supplied by chassis manufacturer.

NOTES

A series of horizontal dashed lines for writing notes.

NOTES

A series of horizontal dashed lines for writing notes.



A NEW BREED.™

www.workhorse.com

Wonder where our next road will lead?

THE NEWMAR KOUNTRY KLUB

As a Newmar owner, you qualify for membership in the Newmar Kountry Klub. Join your local chapter, and just look at the perks you'll enjoy: friendship, fun and adventure with other Newmar owners • rallies and caravans • special RV show events • discounts on RV services • a free monthly Klub magazine • Klub merchandise. And that's just for starters.

Join today! Call 877-639-5582, toll-free, or visit the Klub section of newmarcorp.com.

THE NEWMAR FACTORY TOUR

We'd love to have you visit our state-of-the-art production facility in Nappanee, Indiana. For details, including tour days and times, please call 574-773-7791.

NEWMAR CORPORATION
355 N DELAWARE ST
PO BOX 30
NAPPANEE IN 46550-0030
574-773-7791 Fax 574-773-2895
www.newmarcorp.com

Official Newmar Dealer:



NEWMAR QUALITY: A WAY OF LIFE

Some features shown in our literature are optional. Colors and finishes are photographic representations: The actual materials may look different. Prices, specifications and floor plans are subject to change at Newmar's discretion without prior written notice or obligation. Please see your dealer for actual samples and specifications. © 2003 Newmar Corporation. Printed in the U.S.A. (05/03)