

GULF STREAM COACH

CLASS A DIESEL MOTORHOMES

2005

FRIENDSHIP G7



*The Most Important Friendship
We've ever built is yours.*

FRIENDSHIP G7



COCKPIT • UNIVERSAL

MODERN COCKPIT...

Driving the large and powerful Friendship may be intimidating at first, but once you become accustomed to the controls and smooth handling of the intense 350 horsepower machine you will feel right at home in our ergonomic cockpit designed to put the controls right at your fingertips.



DINETTE • MODEL 8408

FINE DINING...

The dinette of the Friendship is available as a standard freestanding table with chairs and optional fixed booth with comfort plus seating in the 8408 and comes freestanding with chairs in the sun room slideout in the 8411. This dinette gives you plenty of room for fine dining and entertain with style and comfort in your new home on wheels.



MAIN LIVING AREA • MODEL 8408

ELEGANT INTERIORS...

The Friendship wows guests with its impressive interior decor. This luxury coach features deluxe carpet, designer, three-accent decor, and your choice of either durable solid cherry hardwood or elegant white laminate interior.



SUN ROOM • MODEL 8411

SPACIOUS KITCHEN...

The kitchen in the Friendship line of luxury coaches gives you plenty of room and all the appliances you need to prepare all of your favorite meals. This kitchen setup includes 3-burner range with a large over the range convection microwave giving you ventilation for cooking, and a microwave large enough to cook a 9 lb. turkey! Not to mention a large dual deep basin sink which includes residential faucet and hand sprayer.



KITCHEN • MODEL 8411



MAIN LIVING AREA WITH HOME THEATER SYSTEM • MODEL 8411

FRIENDSHIP G7



BEDROOM • MODEL 8411

BATHROOM...

The bathroom in the Friendship makes it easy to prepare for the day ahead. The medicine cabinet mirror and under-sink storage gives you room to hide away personal products, and the skylight in the shower stall provides natural light and additional headroom for tall travelers.



BEDROOM • MODEL 8408



Gulf Stream's Two-Zone living concept gives you 30% more room to utilize throughout the day. By adding a sitting area to the bedroom and giving you the ability to shut the bedroom off from the rest of the coach allows you to enjoy TV, reading or sleeping in private with peace and quiet.



BEDROOM • MODEL 8408

RESTFUL NIGHTS...

Gulf Stream knows that a comfortable night's sleep is an integral part of a great travel experience. That's why we give you many amenities that you enjoy at home in our cozy bedroom areas. Items including a queen size bed, windows at the head of the bed for ventilation, air conditioning, vanity mirror, overhead storage and Optional 20" television.



BEDROOM • MODEL 8408

BEDROOM STORAGE...

The bedroom of the Friendship delivers plenty of storage for both his and her clothing. All floorplans include deep dresser drawers and large wardrobe storage to hang attire.



BEDROOM • MODEL 8411



FRIENDSHIP G7

Exterior Features...

CONTEMPORARY LOOKS...

Full body paint and four color options each protects the exterior and offers a cutting edge look with classic simplicity. Gulf Stream delivers the options you want to protect your investment, suit your budget and visual preference.

EXTERIOR STORAGE...

The practice of raised rail construction delivers more ceiling height while increasing the amount of underbody storage space. Gulf Stream Coach uses one piece steel boxes in our underbody storage compartments which are then carpeted on the inside to protect your belongings while traveling down the road and coated with anti-corrosion paint on the underside to prevent deterioration. Slam latch doors on each storage compartment with lights in each and electrical outlets in two will provide all the conveniences you need to load and unload safely with ease.



GREEN EXTERIOR GRAPHICS PACKAGE



GREEN EXTERIOR GRAPHICS PACKAGE



Rain or Shine

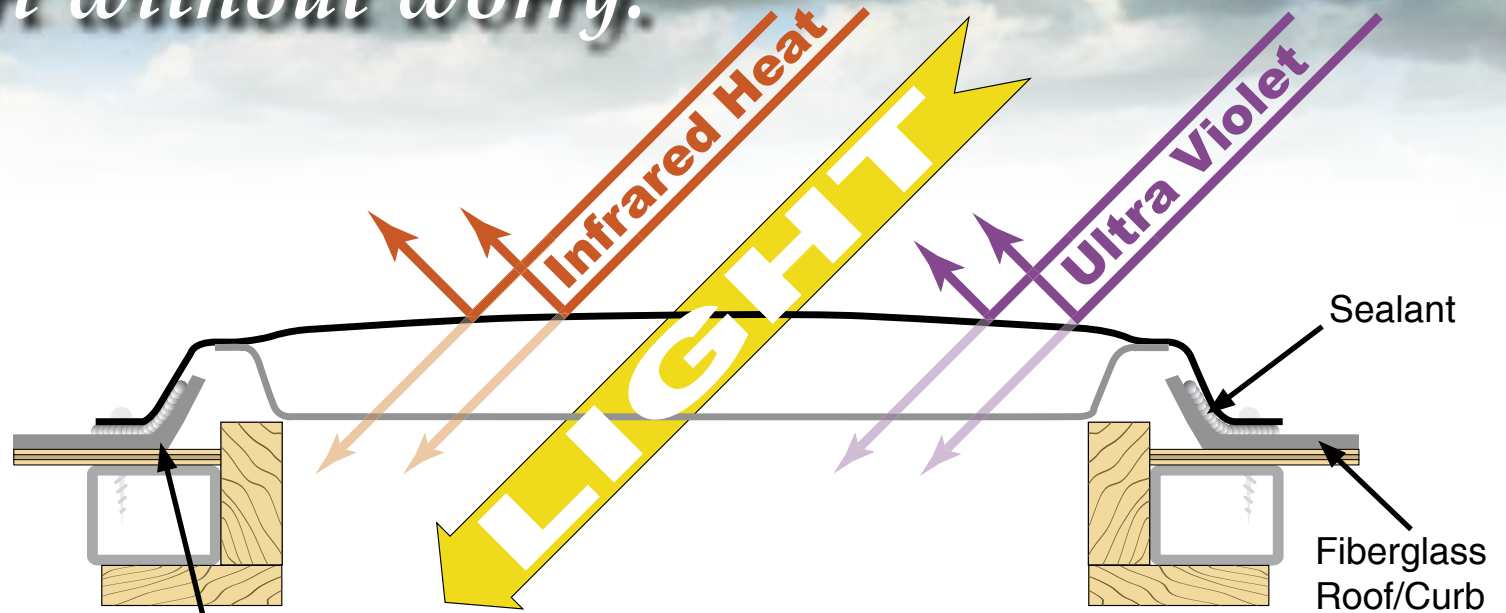
Comfort without worry.



INNOVATIVE SUN ROOM DESIGN... Patent Pending

Open panoramic views, natural lighting and spacious freestanding dinette are just a few of the benefits of the Gulf Stream sun room. More important, is the peace of mind knowing the sun room's skylights are designed to protect the interior from damaging UV light, prevent leaks and aid in climate control.

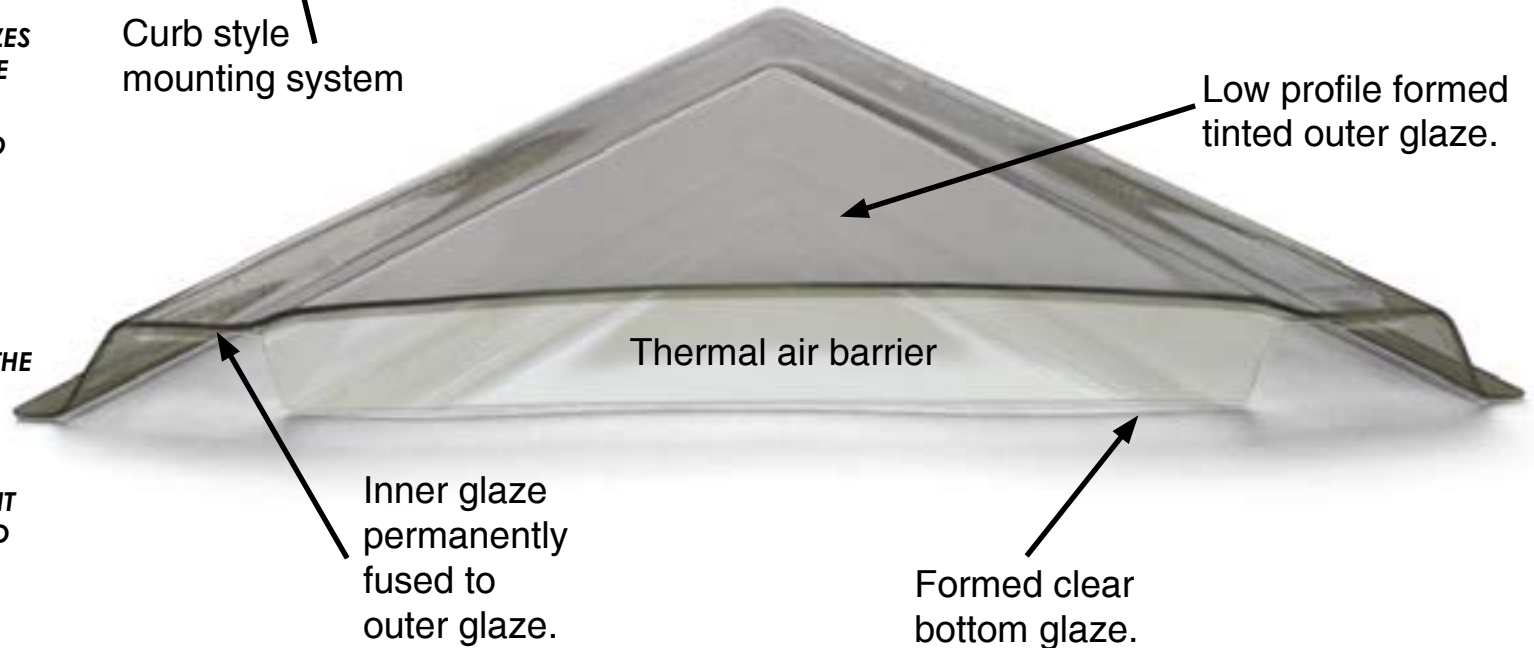
- **DESIGNED BY GULF STREAM EXCLUSIVELY FOR SLIDEOUT ROOMS.**
- **CURB STYLE INSTALLATION ELIMINATES LEAKS.**
- **BOTH TOP AND BOTTOM GLAZES ARE FORMED OF UNBREAKABLE POLYCARBONATE.**
- **THE OUTER GLAZE IS TINTED TO MINIMIZE SOLAR HEAT GAIN. THE BOTTOM GLAZE IS CLEAR.**
- **COLLECTIVELY, BOTH GLAZES ELIMINATE 97% OF THE DAMAGING UV LIGHT.**
- **ALL WALLS AND CEILING OF THE SUN ROOM ARE INSULATED FOR THERMAL AND SOUND CONTROL.**
- **EVERY WINDOW AND SKYLIGHT IN THE SUN ROOM IS EQUIPPED WITH A DAY/NIGHT SHADE**



Curb style mounting system

Sealant

Fiberglass Roof/Curb



Low profile formed tinted outer glaze.

Thermal air barrier

Inner glaze permanently fused to outer glaze.

Formed clear bottom glaze.

Friendship Exclusive Features & Benefits

**SOLID
HARDWOOD
CABINETY**



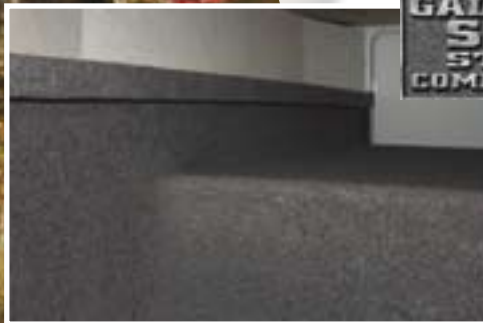
**PRE-DRILLED
HARDWOOD
CONSTRUCTION**

Our residential style cabinets are constructed of solid hardwood doors and fronts that are pre-drilled and screwed then they are stained and top coated with a furniture grade finish that provides long lasting beauty and durability as well as adding strength and quietness to your motorhome.

COMPETITOR'S CABINETY

Other companies use wrapped cabinet fronts prone to peeling, fading and tearing. The softer composite wood used does not hold screws as well as hardwood resulting in loss of strength and squeaking. Discoloration will degrade the beauty and lower the value of the motorhome.

**GALVANIZED
STEEL
STORAGE
COMPARTMENTS**



Seamless, carpeted, galvanized steel storage compartments safely cradle your valuables. Rust protective paint and foam sealed for extended life and a quiet ride.

**HIGH EFFICIENCY
VAC
H-DUCTED
ROOF AIR**



Dual metal H-Ducted air conditioning system with foil bubble wrapped insulation for superior climate control.

Excellent Weathering -
Maintaining the vehicle's quality appearance enhances its resale value.

**Seamless
FIBERGLASS ROOF**

Tear Resistance - Flexroof's hard abuse resistant finish resists tearing, a condition that can cause leaks and lead to expensive repair.

Low Maintenance - Road grime can easily be removed with normal cleaning maintenance. Rubber chalking due to solar breakdown of the roof surface is eliminated, preserving the original appearance and resale value of the vehicle.

Stain Resistance - Fiberglass Flexroof is designed to resist staining and maintain its quality appearance.

Structural Integrity - Unlike conventional EPDM rubber roof membranes, Flexroof is a structural component of the roof system.

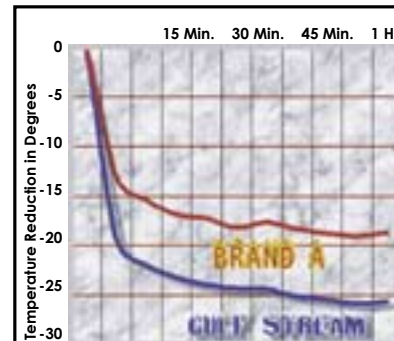
Textured Fiberglass - Helps dissipate heat and prevents tree limbs from tearing or scratching your roof.



Comfort Plus furniture by Gulf Stream Coach features residential styling, solid construction, total comfort and a comprehensive warranty.

FLUSH FLOOR
Slide out rooms

Gulf Stream offers true flush floor slide out rooms to give you more headroom in the slide and eliminates the step up into the slide room that you will experience in many of our competitors motorhomes.



**GULF STREAM VS. BRAND A
Cool Down Comparison**

- At 15 minutes, Gulf Stream cooled 7 degrees cooler.
- At 30 minutes, Gulf Stream cooled 9 degrees cooler.
- At 1 hour, Gulf Stream cooled 9 degrees cooler.

Finally, empirical data demonstrating the efficiency and performance of a roof air conditioning system versus a floor air conditioning system.

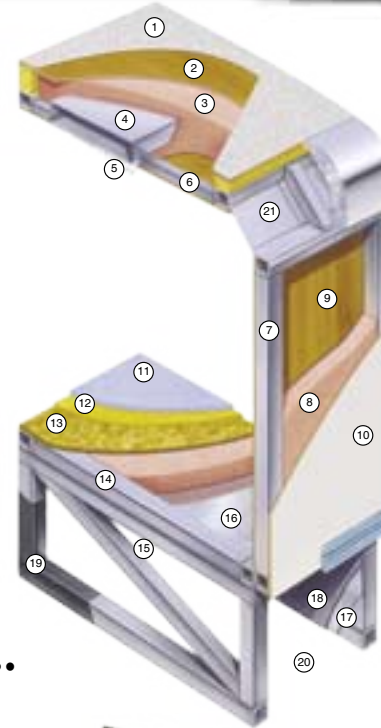
Winner: Roof air conditioning by Gulf Stream

Cradle of Strength



Unlike traditional plywood and foam seating Comfort Plus dinette seating features the strength of steel and the comfort of a sprung cushion.

1. Seamless Fiberglass Roof For Greater Energy Efficiency and Dependability.
2. Luan Decking for Additional Strength.
3. Molded, High Density EPS (Expanded Polystyrene) Roof Brick Insulation - Provides Consistent Insulation Value as well as Superior Dimensional Rigidity.
4. One-Piece Formed Aluminum Air Conditioning Duct, Completely Surrounded By EPS Insulation.
5. Bubble-Wrapped Foil Insulation Provides Superior Insulation and Helps Prevent Condensation.
6. Rugged Welded Tubular Aluminum Roof Framing.
7. Rugged Heavy-Gauge Tubular Aluminum, Fixture Welded to Form the Sidewall Framing.
8. High-Density EPS Insulation Provides Superior Lamination and Bonding Characteristics and Insures Greater Energy Efficiency.
9. Interior Wall Panels Securely Laminated to Sidewall Framing.
10. "Super Slick" Fiberglass Exterior Vacuum-bond Laminated to Sidewall Framing for Lasting Beauty and Durability.
11. High-Quality Stain-Resistant Carpeting Available in Designer Coordinated Colors.
12. Extra-Thick Padding Under Carpet Provides Extra Comfort and Increases Carpet Durability.
13. Seamless Structurewood Floor Decking Laminated to Steel Floor Structure Assures a Quiet, Long-Lasting Rigid Floor.
14. Heavy-Gauge Tubular Steel Framing, Fixture Welded for Extra Strength and Stability.
15. Heavy-gauge Tubular Steel Framed, Fixture Welded Floor Truss System Provides the Strongest Foundation in the Industry.
16. Seamless Layer of Galvanized Steel Securely Laminated to the Steel Floor Framing.
17. Galvanized Steel Used to Form Each Storage & Holding Compartment.
18. Durable All-Weather Carpeting Completes Each Accessible Storage Compartment, Providing Extra Protection for Luggage and Valuables.
19. Rust-Prohibitive Paint Coating Applied to All Steel Framing Assures Corrosion and Rust Protection.
20. The Industry's Strongest, Most Spacious Exterior Storage Compartments.
21. Reinforced Heavy-Gauge Steel "W" Transition.

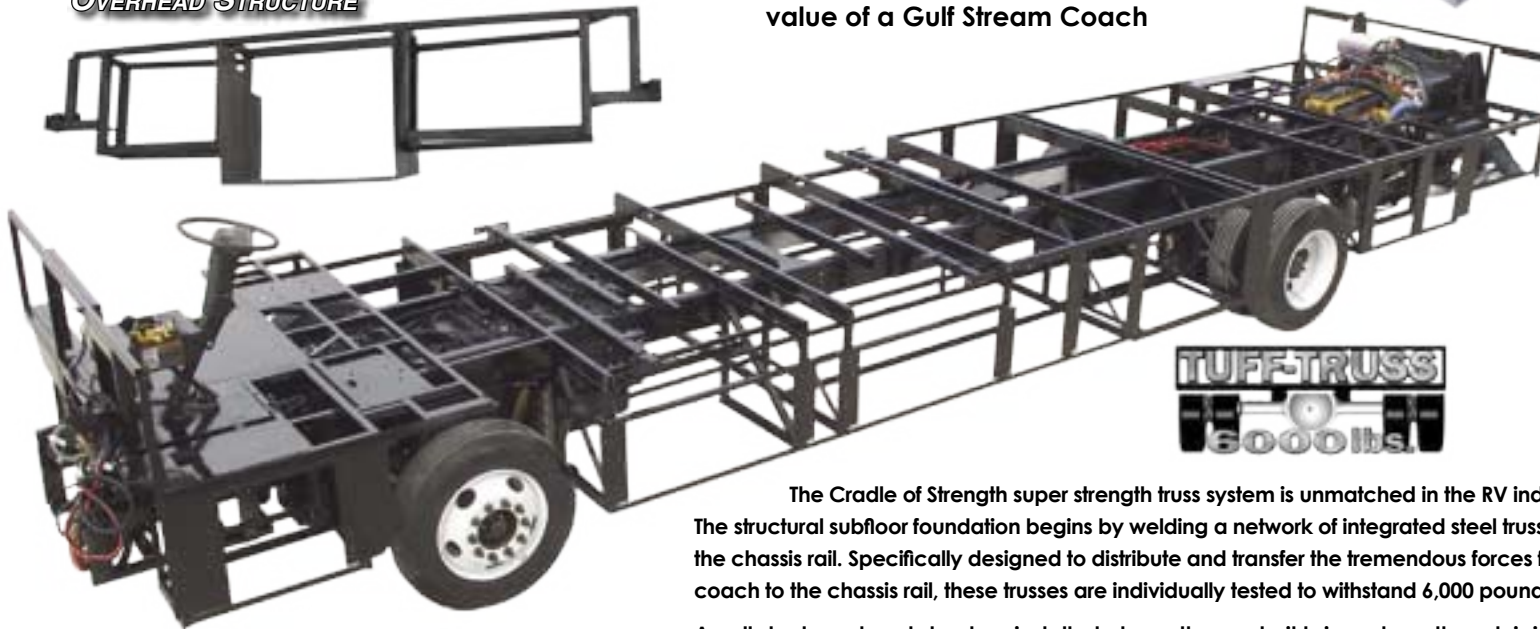


Sand Carpet Available with Tan or Green. Brown Carpet Available with Blue or Mocha.

TAKE THE TIME TO COMPARE...

and you will see the exceptional value of a Gulf Stream Coach

ALL STEEL
OVERHEAD STRUCTURE



The Cradle of Strength super strength truss system is unmatched in the RV industry. The structural subfloor foundation begins by welding a network of integrated steel trusses to the chassis rail. Specifically designed to distribute and transfer the tremendous forces from the coach to the chassis rail, these trusses are individually tested to withstand 6,000 pounds each.

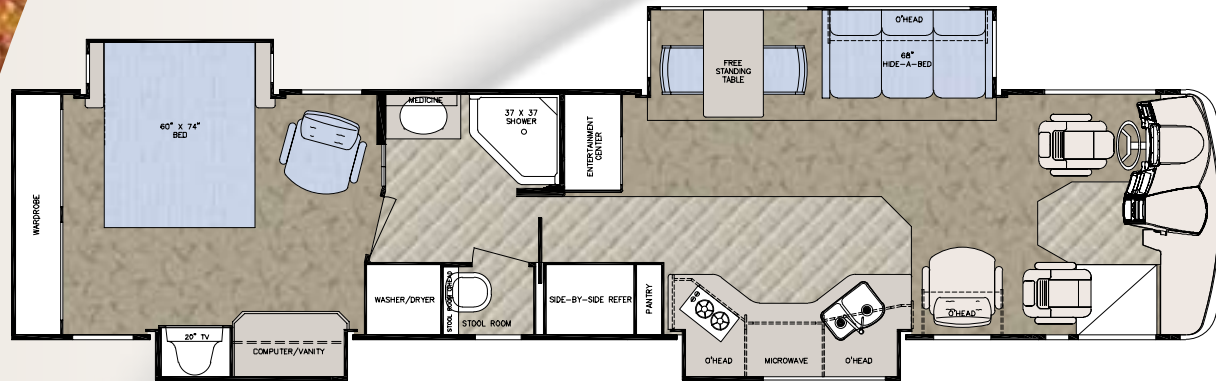
An all steel overhead structure installed above the cockpit brings strength and rigidity to the upper portion of the coach providing a safe strong platform to install a TV that will not break free in an impact while maximizing overhead storage.

NICKEL PLATE HARDWARE



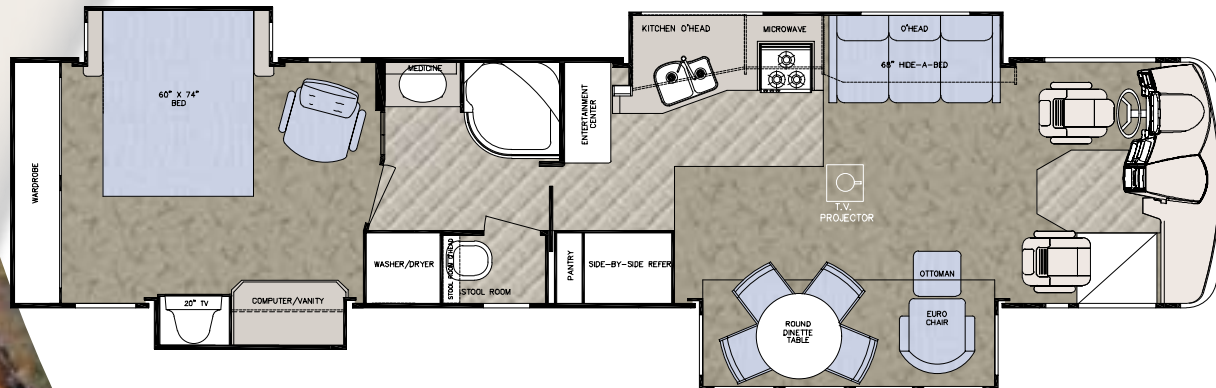
FRIENDSHIP G7

MODEL 8408



Chassis	Freightliner
Engine	350 Cat
Fuel	150
GVWR	32,000
Length	41'-4"
Width	100"
Height w/AC	12'-3"
Interior Height	84"
Wheelbase	276"
Fresh	100 gal.
Grey	75 gal.
Black	75 gal.
LP Gas Tank	150 lbs.
Furnace (BTU's)	40,000/25,000
Water Heater w/DSI	10 gal.

MODEL 8411



Chassis	Freightliner
Engine	350 Cat
Fuel	150
GVWR	32,000
Length	41'-4"
Width	100"
Height w/AC	12'-3"
Interior Height	84"
Wheelbase	276"
Fresh	100 gal.
Grey	75 gal.
Black	75 gal.
LP Gas Tank	150 lbs.
Furnace (BTU's)	40,000/25,000
Water Heater w/DSI	10 gal.



Interior & Decor

- Cherry Hardwood Cabinet Doors
- Corian Countertops
- Residential Sized Cabinets and Overheads
- Windshield Privacy Drape
- Two Toned 6-Way Driver & Passenger Seats
- Deluxe Carpet w/Pad
- Ceramic Tile in Kitchen
- Coordinated Bedspread & Pillow Shams
- Lighted Closets
- Beveled Mirror Overhead Storage
- Pleated Shades
- Crown Molding Throughout
- Vinyl Ceiling Liner

Appliances

- 2-Burner High-Performance Range(8408)
- 3-Burner High-Performance Range(8411)
- Monitor Panel
- 30" Convection Microwave
- Lighted Power Range Hood
- Side-by-Side Refrigerator w/ IceMaker and Purifier
- Washer/ Dryer Prep.

Bath & Water

- Water Purifier
- Water Manifold System
- 10 Gal. On Demand Water Heater
- City Water Hook-Up
- Kitchen Sink Cover
- Mirrored Medicine Cabinet
- Deluxe Porcelain Pedal Stool w/Sprayer
- Sky Dome Over Shower
- Glass Shower Enclosure
- Radius Shower/Tub

Electrical Systems

- Easy-Access Dual Battery System
- 12-volt, 80-Amp Converter
- 50 AMP Service
- Automotive-Type, Color-Coded Wiring
- Lighted Entry & Aisle Lights
- Directional Reading/Map Lights
- Battery Disconnect
- 4 6V Batteries (coach 12V power)
- 2 12V Batteries (chassis 12V power)
- 7.5 Onan Diesel Generator
- 2000 Watt Inverter

Exterior & Construction

- Full Paint Exterior Sanded and Buffed
- "Cradle of Strength" Construction:
 - Welded Steel Sub-Floor Truss System
 - 1-1/2" Tubular Metal Cage Construction on Sidewalls & Roof
 - Insulated Floors w/Virtually Seamless Structurewood Decking
 - Vacuum-Bond Laminated 2" Thick Sidewall Construction Smooth Filon Fiberglass
- High-Density Block Foam Insulation Throughout Sidewalls, Roof & Floor
- Radiused Laminated One Piece Fiberglass Roof w/ Tubular Metal Rafters
- Molded Roof Brick Insulation in Roof, Surrounding Ducted Roof A/C Vents
- Heated & Fully Enclosed Holding Tanks
- Automotive-Style Bumpers
- Deluxe Outside Mirrors
- Generous Pass-Through Basement Storage
- Hinged Exterior Storage Doors
- Exterior Storage Compartment Latches & Locks
- Fully Welded Steel Firewall
- Below Floor Storage Area's are Laminated with Galvanized Steel (not plastic)

Heating, Ventilation & A/C

- Ducted Furnace w/Elect. Ignition (40,000 / 25,000 BTU's)
- (2)15,000 BTU Low Profile Ducted Roof A/C

Chassis

- Freightliner Custom Chassis, Catipillar 350 HP, Rear Radiator 860 ft. lb. Torque
- Allison MD 3060P 6-Speed Electronically Shifted Automatic Transmission
- C-Channel Type, Raised-Rail Steel Chassis Frame
- Anti-Lock Brake System
- Air Brakes
- Full Air-Ride Suspension w/Auto Leveling System and Pure Air Plus Heated Air Dryer
- 22.5 Radial Tires
- Aluminum Alcoa Wheels
- 10,000 lb. Hitch

Furnishing

- Soft Touch Euro Recliner
- Cloth Sleeper Sofa
- Queen Sized Bed
- Free Standing Dinette w/ Two Dining Chairs
- Soft Touch Recliner(8408)
- Silverware Drawer
- Vanity Bench
- Bedroom Chair

Chassis

- Freightliner Custom Chassis, Catipillar 350 HP, Rear Radiator 860 ft. lb. Torque, Allison 6-Speed Electronically Shifted Automatic Transmission
- C-Channel Type, Raised-Rail Steel Chassis Frame
- Anti-Lock Brake System
- Air Brakes

Deluxe Standard Features

- Auto Dash Air Conditioner
- Auto Cruise Control
- AM/FM CD w/4 Spkrs.
- Monitor Panel
- Power Sun Visors
- Power Step Cover
- Stainless Steel Entry Handle
- Power Vent in Commode
- Converter w/Battery Charger
- Auxiliary Battery
- Garden Hose Reel and Air Hose in Basement
- Carbon Monoxide Detector
- TV Antenna
- LP Gas Leak Detector
- Deluxe Metal Wrap Awning
- Flush Floor Slideouts
- Hydraulic Jack Leveling System
- Color Back-up Monitor
- 24" Color Flat Screen TV in Front Overhead
- 20" Color Flat Screen TV in Bedroom
- Sony Dream Home Theater System
- Deluxe Air Horns
- Rear Rock Guard w/ Logo

Popular Options

- 400hp Cummins Engine
- Fully Automatic Hydraulic Jacks
- Entry Door Awning
- 10-Disc CD Changer
- Projection Home Theater System
- Soft Touch Sofa I.P.O. Cloth
- 2-way/4-Door Norcold Refrigerator
- Combo Washer/Dryer



The Gulf Streamers RV Club is a valuable benefit to all Gulf Stream owners. Members enjoy staying active and participating in the various rallies and caravans offered throughout the United States and Canada. Others simply enjoy the value of receiving their Main Stream, the club's 44-page newsletter, with all its up-to-date product information, service tips and company highlights. Whether or not group camping is a part of your RV use, everyone can benefit from the Emergency Road Service and Gulf Streamers Insurance options. Both are available at competitive rates with friendly, reliable service. Another great benefit is the 10% Program, where campgrounds throughout the U.S. and Canada provide Gulf Streamers with a 10 percent discount on camping. As a member, you'll also receive discounts on National Theme Parks and special attractions, including RV and travel guides, directories and magazines.

Rally and caravan participants spend time touring attractions, enjoying fabulous meals, taking in area highlights and shows, while having plenty of free time to relax or explore on their own. Our pre-scouted events include knowledgeable staff to assure you of the finest routes, the tastiest restaurants and the friendliest atmosphere to help make the most out of your RV experience. Special rallies throughout the year also include Gulf Stream supplier seminars, complimentary minor repairs by Gulf Stream technicians, Gulf Stream dealer product displays and round table discussions to voice your product improvement ideas.

Coach-Net®
24 HR. EMERGENCY ROADSIDE ASSISTANCE

- One Year Coach-Net Membership
- Towing and Winching
- Flat Tire Change
- Delivery of emergency Fluids
- Jump-Start / Battery Boost



GULF STREAM FACILITIES...

Located in the heart of the Amish country, the complex, along with Gulf Stream's affiliate, Fairmont Homes, Inc., covers over 400 acres and includes more than 1.5 million square feet of state-of-the-art manufacturing facilities. With over 20 years of manufacturing experience producing quality Recreational Vehicles, Gulf Stream is the leading manufacturer of high quality and high value RV products that are distributed through a partnership relation with independent dealers who are focused on meeting customer expectations.



Quality, Comfort, Innovation

Your family and friends will feel safe and comfortable wrapped in Gulf Stream's "Cradle of Strength". Comfort, Quietness and Insulation from the elements is what you will experience from Gulf Stream's "Tried and Tested" Motorhomes. Compare... and you will find the exceptional value of a Gulf Stream Motorhome.

GULF STREAM EXCEPTIONAL VALUE...


POST OFFICE BOX 1005
 • YOUR GULF STREAM COACH DEALER •

NAPPANEE, IN 46550



VISIT

WWW.GULFSTREAMRV.COM

**FOR MORE DETAILED INFORMATION...
OR CALL 1-800-765-8787-EXT. 3288**

For more information and available options, contact your local Gulf Stream dealer, www.gulfstreamrv.com or Gulf Stream Coach, Inc. Gulf Stream Coach, Inc., reserves the right to make changes in prices, colors, materials, components and specifications and to discontinue models at any time without notice or obligation. Gulf Stream Coach, Inc., assumes no responsibility for any error in type or print reproduction of specifications or floorplans in this brochure. Photographs may show equipment or items that are optional and are not included in the purchase price of the coach. Test drive and review a current model at your nearest Gulf Stream dealer. © 2002 Gulf Stream Coach, Inc., Nappanee, Indiana U.S.A.