

2005 | KOUNTRY AIRE FIFTH WHEEL

by Newmar



# THE GOOD LIFE STARTS HERE

---

YOU HEAR IT CALLING CONSTANTLY—THAT PROMISE OF CAREFREE LIVING ON THE OPEN ROAD. IN A KOUNTRY AIRE FIFTH WHEEL, THAT PROMISE BECOMES REALITY.

IT'S ALL IN THE DETAILS, OF COURSE.

AND NOBODY "DOES" DETAILS LIKE NEWMAR. FROM THE EXPANSIVE LIVING AREAS TO THE PLUSH SEATING TO THE ARRAY OF CONVENIENCES, INSIDE AND OUT, THIS IS ONE FIFTH WHEEL THAT KNOWS HOW TO REPLENISH BODY AND SOUL. THAT'S BECAUSE NEWMAR'S THOUGHTFUL DESIGNERS AND ENGINEERS UNDERSTAND THE IMPORTANCE OF LITTLE THINGS: IT'S THOSE LITTLE THINGS THAT LET YOU LIVE LARGE... IN A KOUNTRY AIRE FIFTH WHEEL.







*Slideout*

*Overhead Cabinets*

*Window Treatments*

*Lighting*

## DETAILS DEFINE THE GOOD LIFE

### *Slideout*

Grand living on a grand scale: That's what you get with the Kountry Aire Fifth Wheel's living area slideouts...courtesy of Newmar, the pioneer in RV slideouts.

### *Window Treatments*

The Kountry Aire's standard large-scale double-pane windows are offset by beautiful interior treatments, including elegant lambrequins and pleated day/night shades. Vertical blinds are standard on rear bay windows.

### *Overhead Cabinets*

Storage space is always at a premium, especially in the living room, so these overhead cabinets can really come in handy.

### *Lighting*

Fashionable, decorative wall sconces not only lend ambiance to the main living area but also serve a useful purpose, putting light where you need it.



36WBKS/Cashmere



37RLPK/Currant

ABOVE: This Sony® flatscreen color TV is handsomely mounted in the living area's grand entertainment center.

RIGHT: Write postcards or pay bills with ease at this convenient desk. The overhead gives you extra storage space and holds a Sony flatscreen color TV.

BELOW: Not only does our sofa provide plush comfort, but the Hide-a-Bed offers plenty of extra sleeping accommodations. The freestanding coffee table gives the living area a warm, residential feel.



37RLPK/Currant

Innovative Concept #47:  
*Hide-a-Bed*

1.



2.



3.





**ENJOY ALL OF LIFE'S BOUNTIES**



36WBKS/Cashmere



37RLPK/Currant

LEFT: Among the Kountry Aire kitchen's top features are an optional 30-inch convection microwave and a three-burner recessed range with electronic ignition and a polished Corian® bi-fold cover. It also includes a 10-cubic-foot Dometic® refrigerator with a hardwood-framed raised-panel front, plenty of optional Regent Cherry hardwood cabinets and an island with a flip-up countertop extension.

ABOVE: The undermounted acrylic sink features flush, polished Corian sink covers and a faucet with an optional filtered drink dispenser.

BELOW: Drama, beauty and useful storage are provided by this built-in hutch.



37RLPK/Currant



36WBKS/Cashmere

## REST EASY: YOU'RE AT HOME



36WBKS/Cashmere

ABOVE: The Kountry Aire's queen-sized bed lifts up to reveal a spacious storage area underneath. The deep wardrobe offers conveniently compartmentalized shelving for shoes and smaller clothing items.

LEFT: The bathroom offers plenty of cabinet space, an easy-cleaning polished Corian® countertop and a tub/shower surround with a shower door.

BELOW: This bedroom's lighted, pullout vanity mirror provides a welcome touch of home.



37RLPK/Currant





A  
B



C



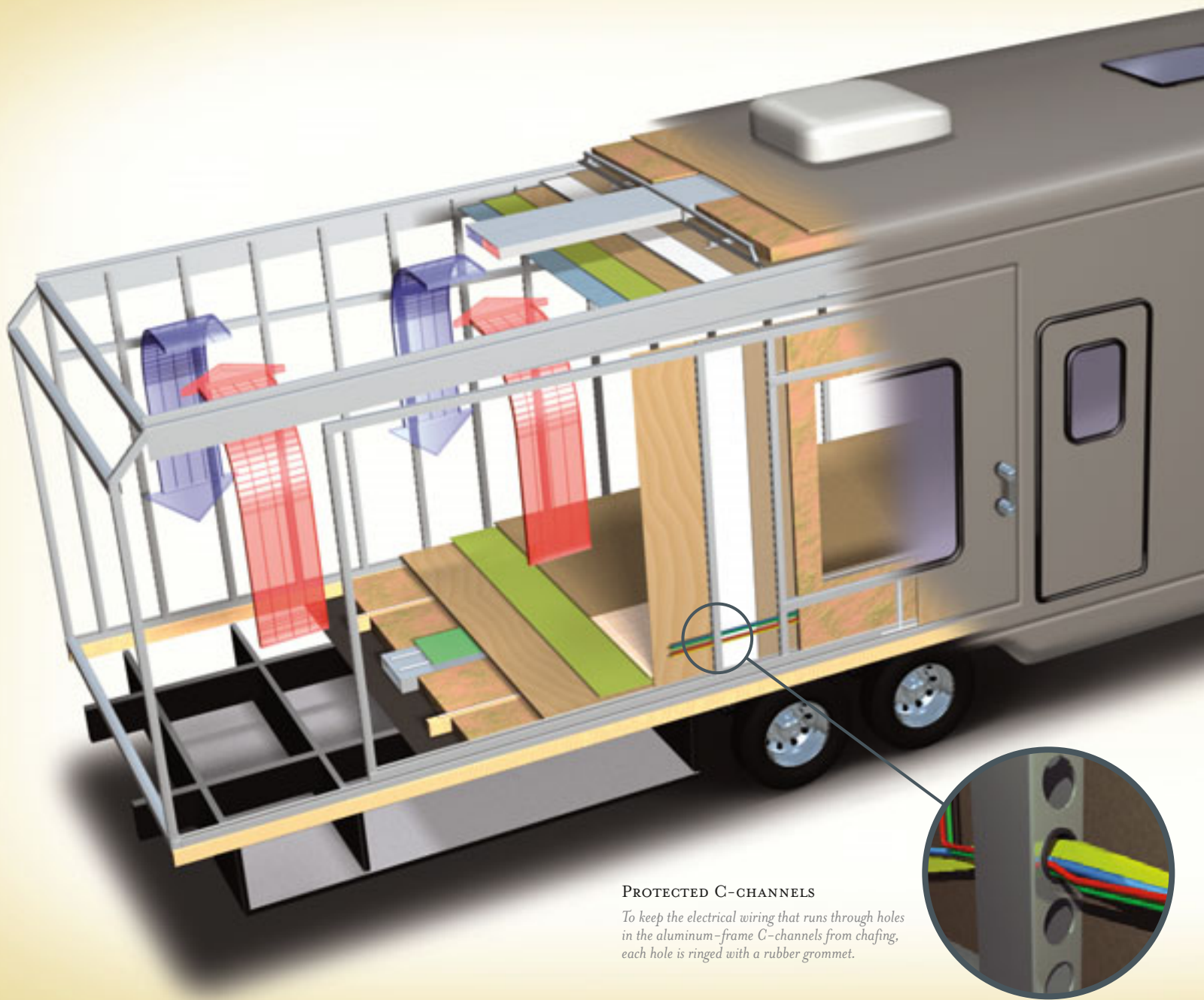
D

- A. The Kountry Aire's front storage area comes complete with a pegboard and a large pullout drawer to increase your storage options.
- B. Dual tandem axles with the MOR/ryde® Rubber Equalizer Suspension and heavy-duty 16-inch wheels assure solid, stable road performance.
- C. This optional Power Porch extends electronically with the push of a button to give you a wider platform for entering and exiting the coach. Also shown is one of the slideout's exterior sides, all of which are fully painted for extra protection and beauty.
- D. The expansive basement pass-through storage is not only lighted but has an optional convenient pullout tray and cargo netting.

## THE NEWMAR KOUNTRY KLUB

As a Newmar owner, you qualify for membership in the Newmar Kountry Klub. Join your local chapter, and just look at the perks you'll enjoy: friendship, fun and adventure with other Newmar owners • rallies and caravans • special RV show events • discounts on RV services • a free monthly Klub magazine • Klub merchandise. And that's just for starters.

Join today. Call 877.639.5582, toll-free, or visit the Kountry Klub section of [newmarcorp.com](http://newmarcorp.com).



#### PROTECTED C-CHANNELS

*To keep the electrical wiring that runs through holes in the aluminum-frame C-channels from chafing, each hole is ringed with a rubber grommet.*

# NOTHING ENDURES LIKE A NEWMAR

Your Kountry Aire Fifth Wheel is built to go the distance. And for good reason: It's assembled on the same production line, to the same exacting standards and with the same meticulous care, as all Newmar coaches. It also reflects Newmar's long history of product innovation and industry "firsts." For us, this is a matter of pride. And tradition. Of taking personal responsibility and building a product we ourselves would want to own.

For the third year in a row, Newmar has won RVDA's Quality Circle Award, given in accordance with the results of an annual RV dealer satisfaction survey. The survey asks RV dealers to evaluate manufacturers' performance in four major categories: Sales Support, Product Competitiveness, Service and Warranty Support. We are honored to receive this award, of course. It tells us that our efforts on behalf of our dealers and customers are appreciated. And we will continue working to keep their trust.



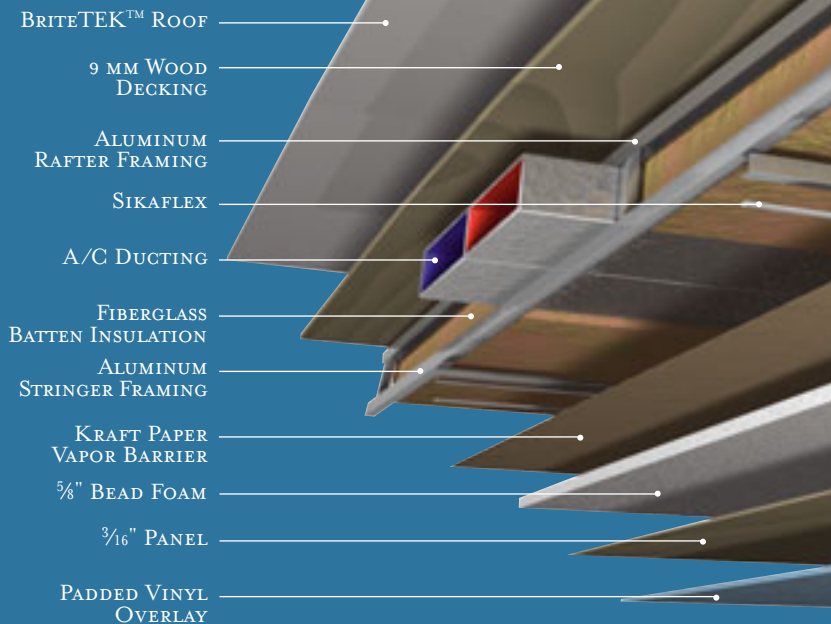


**16" ON-CENTER FRAMING**

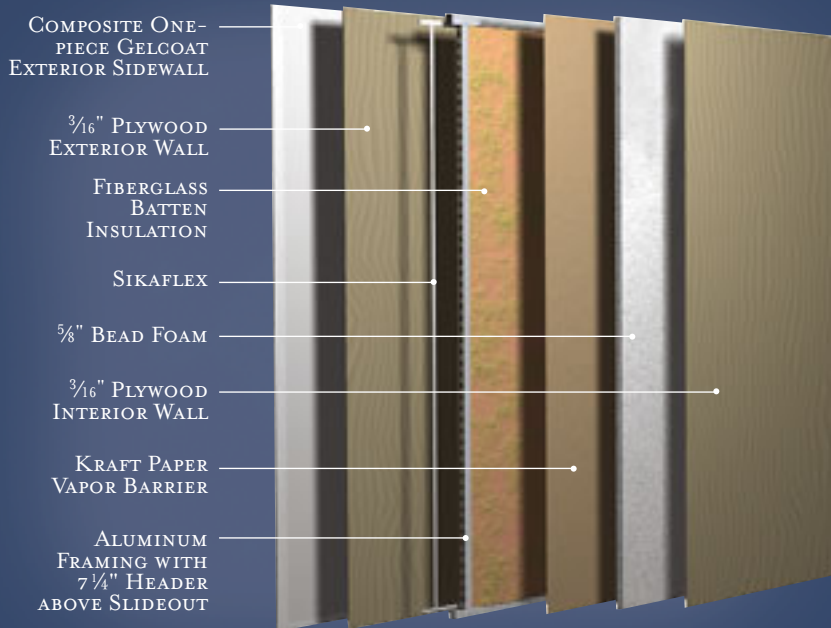
Just like a fine site-built residential home, your Newmar home is framed 16 inches on center, which allows the best placement of outlets, switches and other components.

**SIKAFLEX®**

Sikaflex elastic adhesive is one of the strongest adhesives on the market today. It also serves as a sealant against air and water. And it helps dampen both sound and vibration.



ROOF R-VALUE=24



WALL R-VALUE=11

**TOTAL COMFORT™**  
**NEWMAR CENTRAL AIR CONDITIONING**

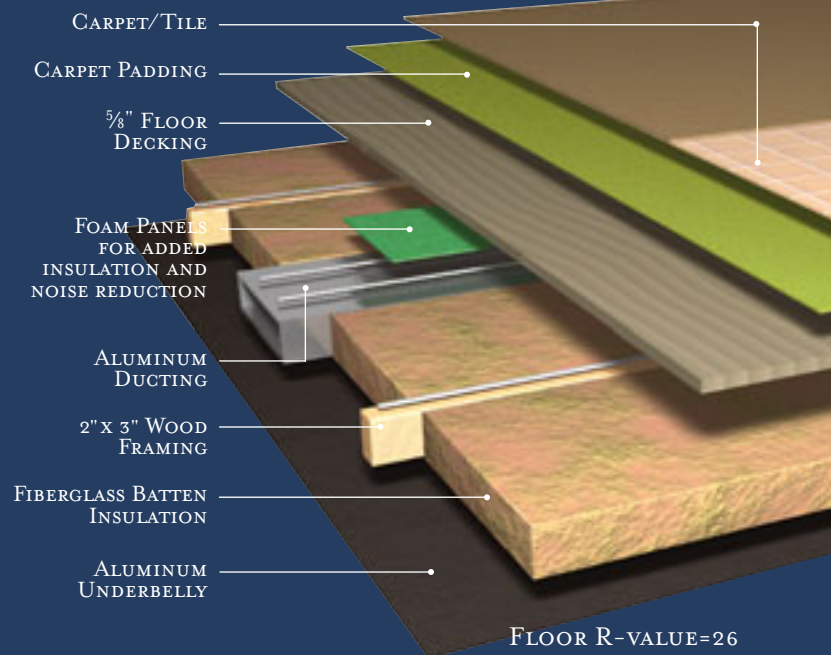


Newmar's Total Comfort Central Air Conditioning system—standard with every Newmar RV—is just like those found in most site-built homes. It's actually two separate, fully ducted systems: one to distribute incoming cool air, the other to quickly and effectively remove warm air from every living area.

**NEWMAR FREEDOM WARRANTY™**

As proof of our commitment to you, we at Newmar back every Kountry Aire Fifth Wheel with our industry-leading three-year limited warranty: The Newmar Freedom Warranty.\* Ask your dealer for details. Coverage this comprehensive is really liberating.

\* Please see a Newmar dealer for a copy of the complete terms of the Freedom Warranty.



FLOOR R-VALUE=26

# INTERIOR & EXTERIOR COLOR OPTIONS



Sherwood Oak Hardwood  
(standard)



Northern Maple Hardwood



Natural Cherry Hardwood



Regent Cherry Hardwood

Upper cabinet doors shown. Real woods will have variations in grain and color. Natural wood products will darken over time.



CASHMERE



FRENCH BLUE



CURRANT



IVY



CASHMERE



FRENCH BLUE



CURRANT



SILVER IVY

# FEATURES

## STANDARD FEATURES

### AIR CONDITIONING & HEATING

- Two 40 Lb. LP Gas Bottles with "Empty" Indicator Light on Slideout Tray
- 13.5M Brisk Central Air Conditioner
- LP Furnace with In-Floor Ducted Heat
- LP Leak Detector

### APPLIANCES & ACCESSORIES

- 12 Gallon Gas/Electric Water Heater — Direct-Spark Ignition
- 22" Spacemaker<sup>®</sup> Microwave Oven
- Sony<sup>®</sup> Flatscreen Color TV in Living Area
- Sony Flatscreen Color TV in Media Room with VCR, DVD and Surround Sound System — Standard Only on 38SDTS Floorplan
- Three-Burner Recessed Range with Glass Oven Door and Electronic Ignition
- AM/FM Radio with Cassette, CD Player
- Cable TV Connection with RG 6 Coax
- Ceiling Fan in Living Room Area
- Dometic<sup>®</sup> 1062 Refrigerator, 10 Cu. Ft.
- Entertainment-Center TV Mounted on Pullout Swivel/Slide Tray
- Exterior TV Jack, on Door Side
- Hardwood Framed Raised-Panel Refrigerator Front
- Polished Corian<sup>®</sup> Range Cover Matching Countertop
- Satellite Prep — Phone, TV Jack and Receptacle
- Telephone Connection with One Phone Jack in Living Area
- TV Antenna with Power Booster, One Exterior & Two Interior Jacks
- Washer & Dryer Prep

### CABINETS & FURNITURE

- Sherwood Oak Hardwood Unitized Cabinets with Raised-Panel Double Arched Cabinet Doors
- Chairs with Ottoman — Two
- Flexsteel<sup>®</sup> Furniture
- Chair End Table
- Lifts on Bed Top to Access Storage Area
- Polished Corian Countertop in Kitchen with Undermounted Acrylic Sink and Flush Sink Covers
- Polished Corian Lavatory Countertop with Integrated Bowl in Bathroom
- Queen Bed — 60" X 80", with Pillowtop Mattress

### ELECTRICAL FEATURES

- Two 6 Volt House Batteries
- Battery Disconnect Switch
- 110 Volt and 12 Volt Lighting in Main Slideout
- 50 Amp Electrical Service with Flexible Cord
- 75 Amp Converter
- Exterior Security Lights, One Installed on Each Side
- Fluorescent Lights in Ceiling and Overhead Cabinets
- Interior Courtesy Lights
- Lights in Exterior Storage Areas, Controlled by Interior Master Switch
- Midship Side Turn Signals

### EXTERIOR FEATURES

- Full Paint Masterpiece Finish<sup>™</sup>
- One-Piece Molded-Fiberglass Front Gooseneck Area
- Power Front Jacks, Rated at 12,000 Lb. with Independent Operation

- Rear Skid Bars with Bike-Rack Capability
- Snaps for Fifth Wheel Jacks
- Stabilizer Jacks, Two Pairs
- Storage Drawer in Front Compartment Area

### INTERIOR FEATURES

- 12" Marble-Look Floor Tile in Kitchen Area
- Carpeting with High-Density Padding in Living Room, Bedroom and Bathroom Areas
- Decorative Area Rug in Kitchen
- Hardwood Fascia on Living Area Slideout
- Hardwood Window Trim
- Kitchen Wastebasket on Pullout Tray
- Lined Day/Night Pleated Window Shades & Lambrequins, Vertical Blinds on Rear Bay Windows
- Mini-Blinds in Kitchen Area
- Padded Vinyl Ceiling
- Quilted Bedspread with Pillow Shams, Matching Bed Skirt & Accent Pillows
- Smoke Detector & 5 Bc Fire Extinguisher

### PLUMBING / BATH FEATURES

- Delta<sup>®</sup> Faucets in Kitchen and Bathroom, with Pullout Spout Faucet in Kitchen
- Bath Accessories — Towel Bar, Tissue Holder, Towel Ring & Robe Hook
- Demand Water System with Aquajet<sup>™</sup> "ES" Pump
- Fiberglass Tub/Shower with "Reeded" Glass Shower Door
- Gate-Valve Drain on Fresh-Water Tank
- Monitor Panel
- Sewage Holding-Tank Rinse
- Sewage-Hose Holder, Easy Access Flop-Down Tray
- Thetford<sup>™</sup> Aria Sculptured China Stool
- Tub/Shower Wall Light
- Water-Heater Bypass System

### CONSTRUCTION FEATURES

- BriteTEK<sup>™</sup> Roof with 9 MM Decking and Radius Fiberglass Top Wrap
- Gelcoated Fiberglass End Caps
- Gelcoated Fiberglass Exterior Sides
- 16" I-beam Frame with Molded Wrap Storage Doors
- 5/8" Foam Insulation Laminated in Sidewalls and Ceiling
- Aluminum-Frame Sidewalls & Roof Construction, 16" on Center
- Enclosed Underbelly with Fiberglass Insulation & Aluminum Laminated to 5/8" Foam
- Roof R-value Rating: 24
- Sidewall R-value Rating: 11
- Floor R-value Rating: 26
- Power Lock Arms on All Slideout Rooms

### WINDOWS, AWNINGS & VENTS

- Double-Pane, Tinted Safety-Glass Windows
- A&E<sup>®</sup> 9000 Side Awning
- Fan-Tastic<sup>®</sup> Vent with Rain Sensor in Kitchen Area
- Power Vent with Wall Switch in Bathroom
- Lighted Acrylic Assist Handle at Entrance Door
- Skylight in Bathroom, Located Above Tub/Shower
- Triple Entrance-Door Step

### TOWABLE CHASSIS FEATURES

- Dual Wheels, Disc Brakes, MOR/ryde<sup>®</sup> Rubber Equalizer Suspension
- Shock Absorbers
- Spare Tire, Located in Rear Pullout Storage Tray
- Stainless Steel Wheel Simulators

## OPTIONAL FEATURES

### AIR CONDITIONING & HEATING

- Two 40 Lb. LP Aluminum Gas Bottles (-11 Lb.)
- Extra 13.5M or 15M Heat Pump Air Conditioner

### APPLIANCES & ACCESSORIES

- Norcold<sup>®</sup> Four-Door Refrigerator with Icemaker and Water Dispenser (50 Lb.)
- Two-Piece Washer & Dryer (210 Lb.)
- 30" Convection Microwave with Three-Burner Cooktop (13 Lb.)
- Dometic 1292 Side-By-Side Refrigerator, 12 Cu. Ft. (97 Lb.)
- 30" Speedcook Advantium<sup>™</sup> Microwave with Three-burner Plate (29 Lb.)
- 18" Dishwasher
- Sony Surround Sound System with VCR, DVD Player and Subwoofer (10 Lb.)
- 20" Color TV in Bedroom
- Compact Washer/Dryer
- Central Vacuum with Floor Port and Deluxe Tool Kit
- U-Line Icemaker (62 Lb.)
- Electric Fireplace on Some Floorplans (56 Lb.)

### CABINETS & FURNITURE

- Undermounted Corian<sup>®</sup> Offset Sink in Kitchen (25 Lb.)
- Northern Maple Hardwood Cabinets
- Natural Cherry Hardwood Cabinets
- Regent Cherry Hardwood Cabinets
- Leather/Vinyl Sofa (10 Lb.)
- Sofa Coffee Table with Glass Top
- Combination Desk/Dinette Table with Two Folding and Two Fixed Chairs
- Leather Vinyl Chair and Ottoman in Place of Standard—Two
- Leather/Vinyl Sofa
- King Bed on Some Floorplans
- Luxurious Pillowtop Mattress

### ELECTRICAL FEATURES

- Quick-Charge Battery System
- 7.0 kW Onan<sup>®</sup> Generator with Auto Change-over and Battery (371 Lb.)
- 50 Amp Cord Reel (30 Lb.)

### EXTERIOR FEATURES

- Diamond Shield Front Paint Protective Film on Cover Front Storage Area
- Power Twins in Place of Standard Stabilizer Jacks (40 Lb.)
- Pullout Storage Tray (85 Lb.)
- Bike Rack Carrier (20 Lb.)
- Mud Flaps (18 Lb.)
- Rear Ladder
- Hydraulic Leveling Jacks with Touch Panel Control

### INTERIOR FEATURES

- Simulated Ceramic Floor Tile in Kitchen, Bathroom and Foyer Area (35 Lb.)
- Simulated Plank Floor in Kitchen and Foyer Area
- Lined Drapes with Valances

### CONSTRUCTION FEATURES

- Diamond Shield Front Protective Film on Lower Front Storage Area
- Gelcoated Fiberglass Roof with 1/4" Foam Insulation (78 Lb.)

### WINDOWS, AWNINGS & VENTS

- Automatic Triple Entrance-Door Step (7 Lb.)
- Fan-Tastic Vent In Place of Standard Bathroom Power Vent (11 Lb.)
- Power Slideout Landing with Railing and Power Step (130 Lb.)
- A&E Weather Pro Side Awning In Place Of Standard (128 Lb.)

### TOWABLE CHASSIS FEATURE

- MOR/ryde<sup>®</sup> Independent Suspension (384 Lb.)

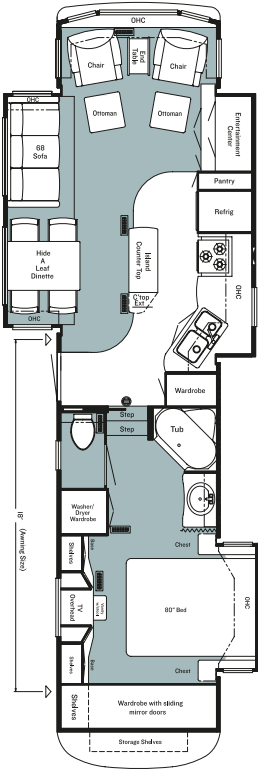
## FULL-PAINT MASTERPIECE FINISH<sup>™</sup>

Newmar's Full-Paint Masterpiece Finish creates an exterior of stunning beauty and incredible endurance—a true work of art. As industry leaders in applying full body paint to motorhome coaches, we at Newmar are pleased to offer the Full-Paint Masterpiece Finish as a Kountry Aire Fifth Wheel standard.

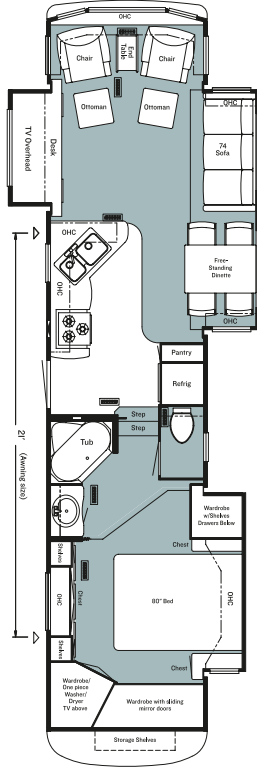
## DIAMOND SHIELD

Diamond Shield Front Paint Protection Film is optional on all Kountry Aire Fifth Wheels. Diamond Shield Film protects the front against stone chips, scratches and bug acids. Diamond Shield Film is optically clear with a high gloss designed to keep the Full-Paint Masterpiece Finish looking new.

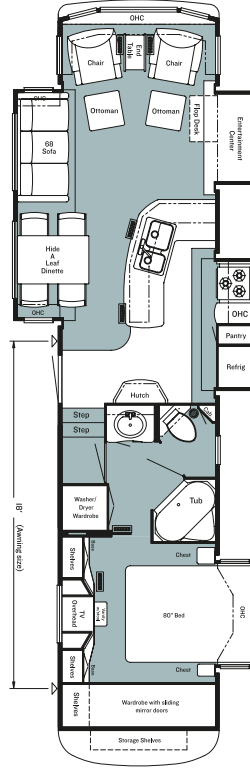
# FLOORPLANS



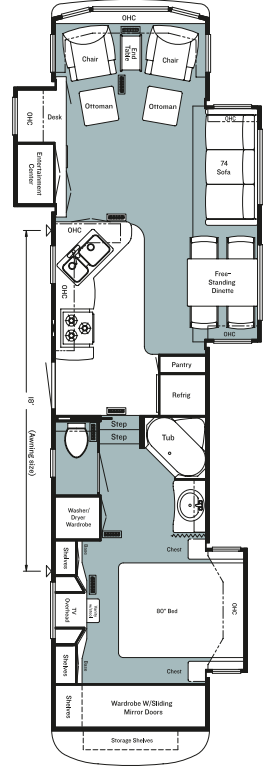
**KAFW 36WBKS**  
Options: K563, K634,  
M474, P094



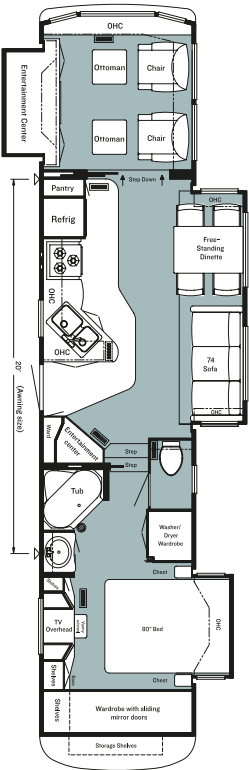
**KAFW 37BLMB**  
Options: J338, K635,  
P095



**KAFW 37RLPK**  
Options: K567, M476

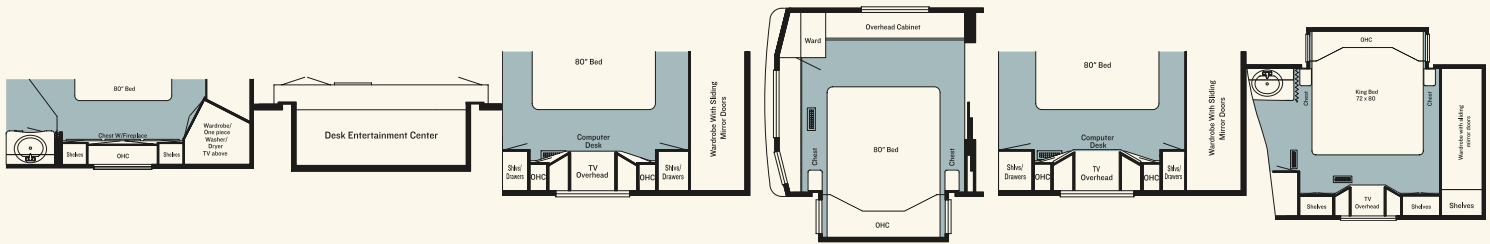


**KAFW 38BLSE**  
Options: K563, K634,  
M474, P094



**KAFW 38SDTS**  
Options: K470, K566,  
M477

# FLOORPLAN OPTIONS



**J338**  
Fireplace in Lieu  
of Chest of Drawers  
KAFW: 37BLMB

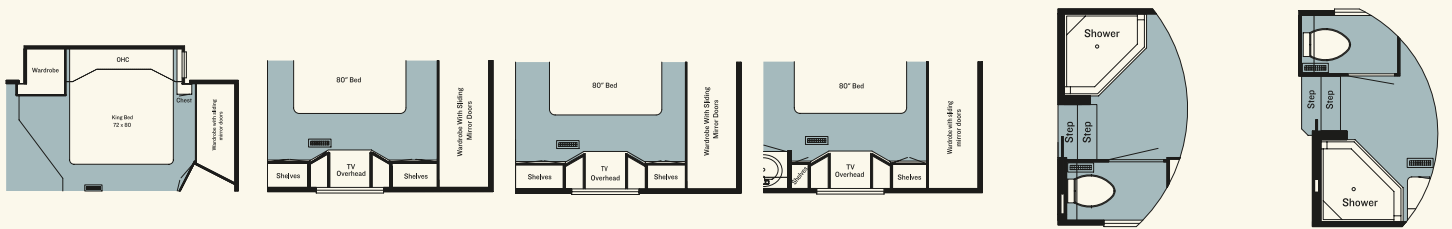
**K470**  
Desk Entertainment  
Center  
KAFW: 38SDTS

**K563**  
Computer Center in  
Lieu of Vanity Center  
KAFW: 36WBKS,  
38BLSE

**K566**  
Rear Bedroom  
Slideout in Lieu  
of Den  
KAFW: 38SDTS

**K567**  
Computer Center in  
Lieu of Vanity Center  
KAFW: 37RLPK

**K634**  
King Bed  
KAFW: 36WBKS,  
38BLSE



**K635**  
King Bed  
KAFW: 37BLMB

**M474**  
Vanity Over Dresser  
in Lieu of Vanity  
Center  
KAFW: 36WBKS,  
38BLSE

**M476**  
Vanity Over Dresser  
in Lieu of Vanity  
Center  
KAFW: 37RLPK

**M477**  
Vanity Over  
Dresser in Lieu  
of Vanity Center  
KAFW: 38SDTS

**P094**  
Corner Shower  
in Lieu of Tub  
KAFW: 36WBKS,  
38BLSE

**P095**  
Corner Shower  
in Lieu of Tub  
KAFW: 37BLMB

## FLOORPLAN SPECIFICATIONS

FLOORPLAN	TIRE SIZE	GAWR	GVWR	APP. LENGTH	APP. HEIGHT	WIDTH	APP. DRY WEIGHT	APP. HITCH WEIGHT	FRESH WATER	GREY	SEWAGE CAP.	APP. HITCH HEIGHT	HEAT CAP.
36WBKS	235/85R16-E	9,000 lb.	21,000 lb.	39' 03"	13' 03"	101"	16,673 lb.	3,168 lb.	75 gal.	97 gal.	55 gal.	47"	55,000 Btu
37BLMB	235/85R16-E	9,000 lb.	21,000 lb.	40' 02"	13' 03"	101"	15,992 lb.	3,038 lb.	75 gal.	97 gal.	55 gal.	47"	55,000 Btu
37RLPK	235/85R16-E	9,000 lb.	21,000 lb.	39' 10"	13' 03"	101"	17,020 lb.	3,064 lb.	75 gal.	92 gal.	50 gal.	47"	55,000 Btu
38BLSE	235/85R16-E	9,000 lb.	21,000 lb.	40' 07"	13' 03"	101"	16,343 lb.	2,941 lb.	75 gal.	97 gal.	55 gal.	47"	55,000 Btu
38SDTS	235/85R16-E	9,000 lb.	21,000 lb.	41' 01"	13' 03"	101"	16,931 lb.	3,386 lb.	75 gal.	92 gal.	50 gal.	47"	55,000 Btu

In keeping with our tradition of bringing our customers the highest-quality products in the industry, Newmar works with the following manufacturers to supply components for our vehicles.



[www.diamond-shield.com](http://www.diamond-shield.com)



[www.fantasticvent.com](http://www.fantasticvent.com)

## NEWMARCORP.COM

Visit our Web site. Here you'll easily access the most up-to-date Newmar product information, model specifications, floorplans and options. You'll also learn more about who we are, how we work and what we believe in. Become a registered user—for free—and you'll also get access to the latest event data, technical and service tips and the location of your nearest Newmar dealer. This isn't just our site—it's yours.

## THE NEWMAR FACTORY TOUR

We'd love to have you visit our state-of-the-art production facility in Nappanee, Indiana. Factory tours are given Monday through Friday at 10 a.m. and 1 p.m. (Indiana time). Pre-registration is not required but is helpful, since tour-group sizes may be limited from time to time. Please arrive 15 minutes before the hour and check in at the tour area that is located in Building Nine on Cheyenne Street. No open-toed sandals can be worn, and children under the age of eight are not allowed to take the tour.

For more information or to pre-register, please call 800.860.0086.



NEWMAR QUALITY: A WAY OF LIFE

NEWMAR CORPORATION  
355 N DELAWARE ST  
PO BOX 30  
NAPPANEE IN 46550-0030  
574-773-7791 Fax 574-773-2895  
[www.newmarcorp.com](http://www.newmarcorp.com)

Your Official Kountry Aire Dealer: