

2005 | MOUNTAIN AIRE DIESEL PUSHER

by Newmar



TRUE ELEGANCE

CONTEMPORARY *yet* TIMELESS

FORM AND FUNCTION. ARTISTRY AND PRACTICALITY. THEY'RE PERFECTLY BALANCED IN MOUNTAIN AIRE DIESEL PUSHER MOTORHOMES.

YOU'LL SEE THAT IMMEDIATELY IN THE GENEROUS, THOUGHTFULLY CONFIGURED LIVING SPACES... THE RANGE OF LUXURIOUS APPOINTMENTS THROUGHOUT... AND THE CHOICE OF STRIKING FULL-PAINT MASTERPIECE FINISH™ EXTERIORS.

OF COURSE, NEWMAR'S DESIGNERS AND ENGINEERS HAVE LONG HAD A KNACK FOR BALANCING STYLE, COMFORT AND CONVENIENCE IN INNOVATIVE WAYS. THE RESULT IS A SINGULARLY ENJOYABLE RV EXPERIENCE FOR YOU. TIME AFTER TIME. MILE AFTER MILE.





Decorative Molding

Slideout

Window Treatments

Lighting

THE COMFORT'S IN THE DETAILS

Decorative Molding

Recalling the rich architectural detail of fine traditional homes, the trimwork surrounding the slideout opening features decorative molding accents.

Slideout

The Mountain Aire's living area slideout significantly expands your living options and your comfort—which is what you'd expect from Newmar, the pioneer in RV slideouts.

Window Treatments

Mountain Aire window treatments include elegant lambrequins and lined, pleated day/night shades.

Lighting

Dramatic yet tastefully styled wall sconces put light where you need it—and lend ambiance to the main living area.



LEFT: Talk about convenience: This stylish leather recliner comes with its own equally stylish ottoman and is positioned next to a wall-mounted flip-up sidetable.

ABOVE: Plush comfort and the appeal of an elegant 3-D look are provided by the Mountain Aire's textured carpet with its sculpted inlay.

BELOW: Our leather L-lounge has a relaxing incliner section and a large storage area underneath.

4031/Verde



4031/Golden Surat

Innovative Concept #36:

L-lounge with Incliner and Storage





A FEAST FOR THE SOUL



4031/Verde

Wherever your path to adventure leads, home-cooked meals are easy to prepare in the Mountain Aire kitchen, thanks to its open, airy floorplan and its remarkable range of thoughtful amenities. This truly is the hub of an enriching RV lifestyle.

Microwave Oven

Cabinets

Countertops

IT'S ALL IN THE PRESENTATION

Microwave Oven

This optional 30-inch Speedcook Advantium™ microwave oven really increases your cooking options.

Cabinets

Kitchen storage space is very generous in the Mountain Aire. Cabinets are made of optional Coastal Cherry hardwood and have attractive double-cathedral, raised-panel doors.

Countertops

The Mountain Aire kitchen's generous Corian® countertops feature decorative molding on the edges. A flip-up countertop extension is provided by the sink, and there's a pullout cutting board by the range.

Ceramic Tile Floor

The look is classic; the care is easy.

Ceramic Tile Floor



4304/Linen

ABOVE: The hidden-leaf dinette table with Corian® insert is complemented by two plushly upholstered freestanding sidechairs and two upholstered folding chairs, creating a pleasant, roomy setting for meals, conversation or gaming.

RIGHT: Reliable electronic ignition, sealed burners for easy cleanup and a Corian bi-fold cover that closes flush with the countertop distinguish the Mountain Aire's three-burner recessed range.

BELOW: The undermounted sink features flush sink covers, a waterfall faucet with a filtered drink dispenser and a separate pullout sprayer.



4301/Golden Surat



4301/Golden Surat



Overhead Cabinets

Reading Lights

Luxurious Bedding

SWEET REST AT DAY'S END



Overhead Cabinets

Convenient cabinets above the headboard let you stow more of your favorite clothing, bedding or personal items.

Reading Lights

Individual reading lights are mounted above the headboard at each side of the bed.

Luxurious Bedding

The Mountain Aire bedroom offers a king- or queen-sized bed, based on floorplan, enhanced with a quilted headboard fronting a mirrored wall panel, a quilted bedspread, a reverse sham and accent pillows. The bed flips up, giving you access to a spacious storage area underneath.



4303/Bay Blue

ABOVE: The 4303 bedroom floorplan features this stylish and wonderfully comfortable side chair with a pullout ottoman.

RIGHT: In addition to offering plenty of cabinet space, the bathroom features an easy-cleaning Corian® countertop and a tub/shower door with decorative design that matches the living room's sculpted carpet.

BELOW: Lots of deep drawers and cabinets—including drawers beneath a window seat—let you bring what you need for the long haul. A standard Sony® flatscreen color TV is built into the cabinetry, high enough for easy viewing from bed.



4304/Linen



4301/Golden Surat



A B



C



D



E



A. The Mountain Aire cab is truly the "Driver's Command Center." All dashboard gauges and controls are well within view and reach.

B. Leather and vinyl seating with power lumbar support, heat and eight-way power adjustment keeps you comfortable mile after mile.

C. The backs of the cab seats feature embroidered Mountain Aire logos, which add an air of sophistication.

D. This pullup color rearview monitor also features a remote 6-disc CD player and an AM/FM stereo with optional XM Satellite Radio capability.

E. Optional OnStar[®], with first year of service included, lets you access up-to-the-minute driving information and timely assistance with the touch of a button.

F. The optional exterior entertainment system includes a 22-inch flatscreen LCD color TV mounted on a swing-out arm, a Sony® AM/FM stereo with CD player and two speakers, all contained in a separate compartment.

G. Keep food on ice, closer to your grill, with this optional exterior storage-compartment freezer on a pullout tray.

H. Optional slideout storage trays in the basement compartment make it easier to stow and access smaller items.

I. Discover the convenience of RV access by optional keyless entry.

J. The Mountain Aire's powerful 7.5 kW Onan® Quiet Series diesel generator is located in a convenient front pullout compartment for easy access.



F



G H



I



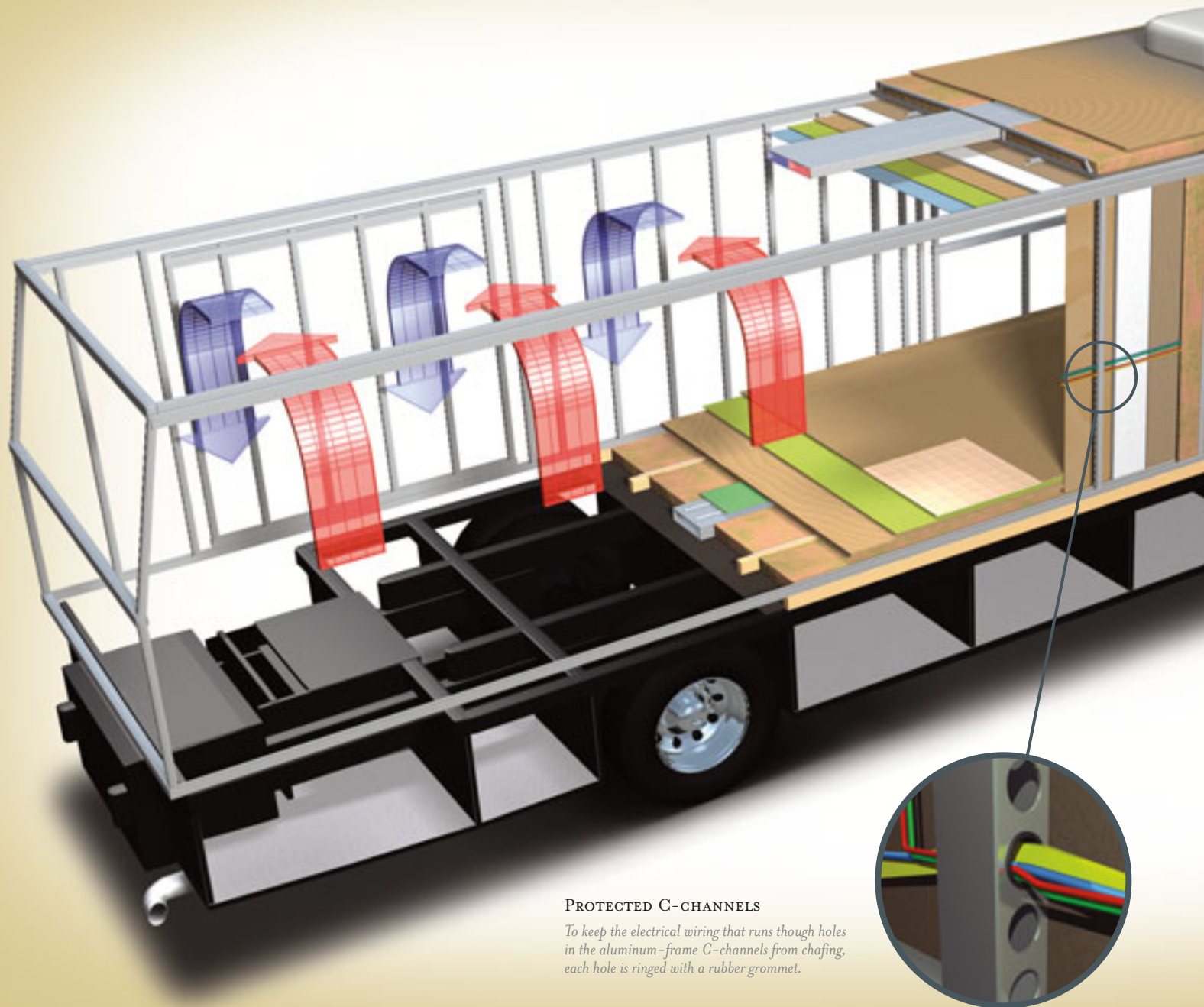
J



THE NEWMAR KOUNTRY KLUB

As a Newmar owner, you qualify for membership in the Newmar Kountry Klub. Join your local chapter, and just look at the perks you'll enjoy: friendship, fun and adventure with other Newmar owners • rallies and caravans • special RV show events • discounts on RV services • a free monthly Klub magazine • Klub merchandise. And that's just for starters.

Join today. Call 877.639.5582, toll-free, or visit the Kountry Klub section of newmarcorp.com.



PROTECTED C-CHANNELS

To keep the electrical wiring that runs through holes in the aluminum-frame C-channels from chafing, each hole is ringed with a rubber grommet.

NOTHING ENDURES LIKE A NEWMAR

Your Mountain Aire Diesel Pusher Motorhome is built to go the distance. And for good reason: It's assembled on the same production line, to the same exacting standards and with the same meticulous care, as all Newmar motorhomes. It also reflects Newmar's long history of product innovation and industry "firsts." For us, this is a matter of pride. And tradition. Of taking personal responsibility and building a product we ourselves would want to own.

For the third year in a row, Newmar has won RVDA's Quality Circle Award, given in accordance with the results of an annual RV dealer satisfaction survey. The survey asks RV dealers to evaluate manufacturers' performance in four major categories: Sales Support, Product Competitiveness, Service and Warranty Support. We are honored to receive this award, of course. It tells us that our efforts on behalf of our dealers and customers are appreciated. And we will continue working to keep their trust.





16" ON-CENTER FRAMING

Just like a fine site-built residential home, your Newmar home is framed 16 inches on center, which allows the best placement of outlets, switches and other components.

SIKAFLEX®

Sikaflex elastic adhesive is one of the strongest adhesives on the market today. It also serves as a sealant against air and water. And it helps dampen both sound and vibration.



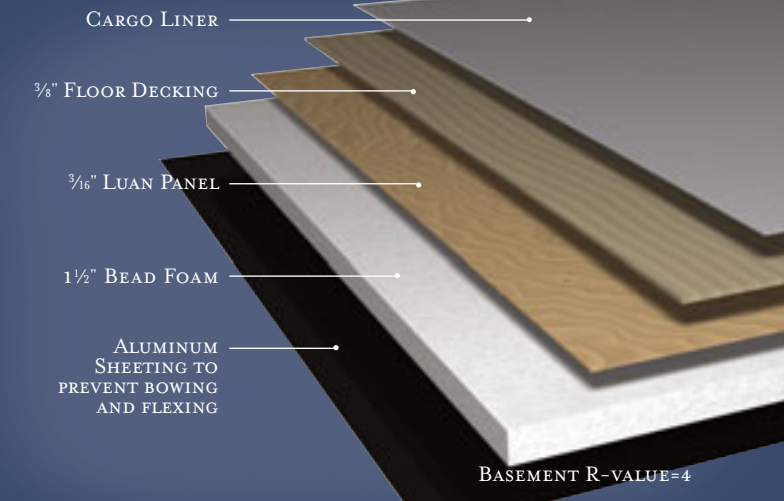
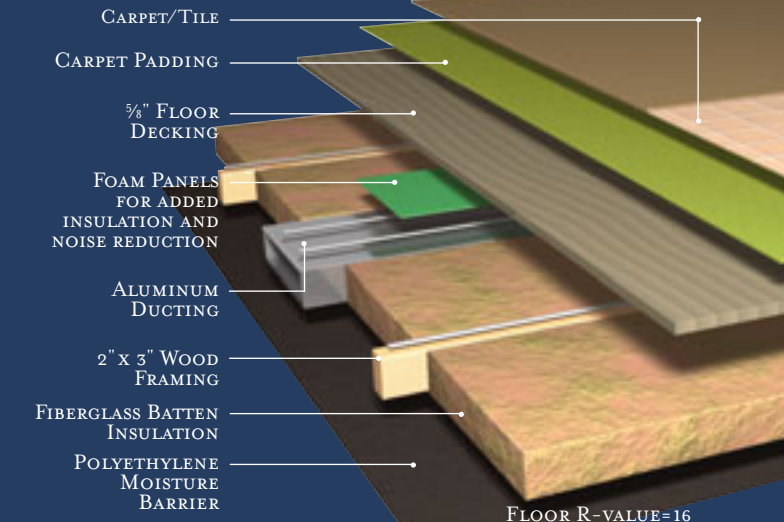
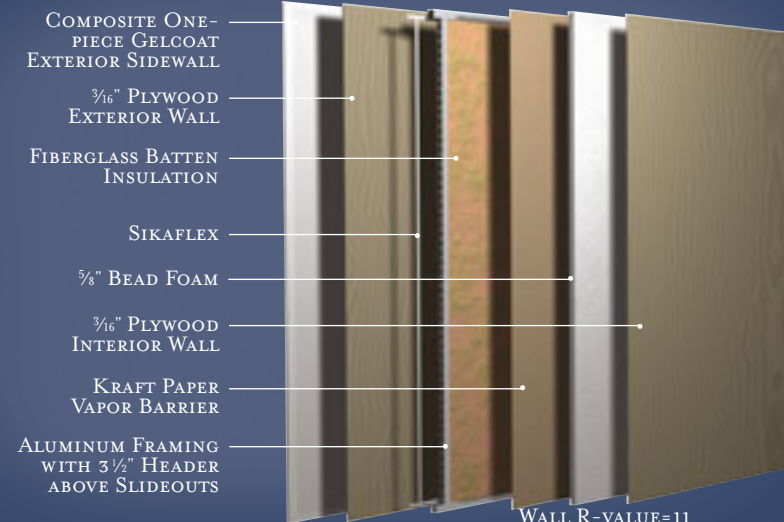
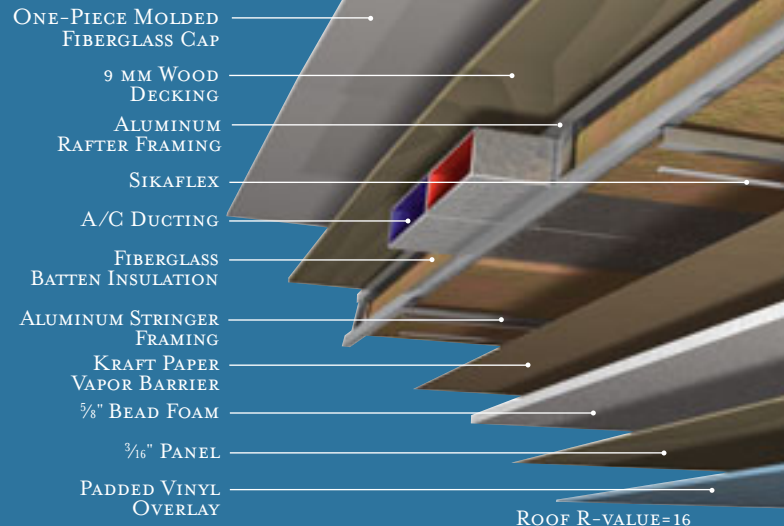
**TOTAL COMFORT™
NEWMAR CENTRAL AIR CONDITIONING**

Newmar's Total Comfort Central Air Conditioning system—standard with every Newmar RV—is just like those found in most site-built homes. It's actually two separate, fully ducted systems: one to distribute incoming cool air, the other to quickly and effectively remove warm air from every living area.

NEWMAR FREEDOM WARRANTY™

As proof of our commitment to you, we at Newmar back every Mountain Aire Diesel Pusher Motorhome we make with our industry-leading three-year/50,000-mile limited warranty: The Newmar Freedom Warranty.* Ask your dealer for details. Coverage this comprehensive is really liberating.

*Please see a Newmar dealer for a copy of the complete terms of the Freedom Warranty.



INTERIOR & EXTERIOR COLOR OPTIONS



LINEN



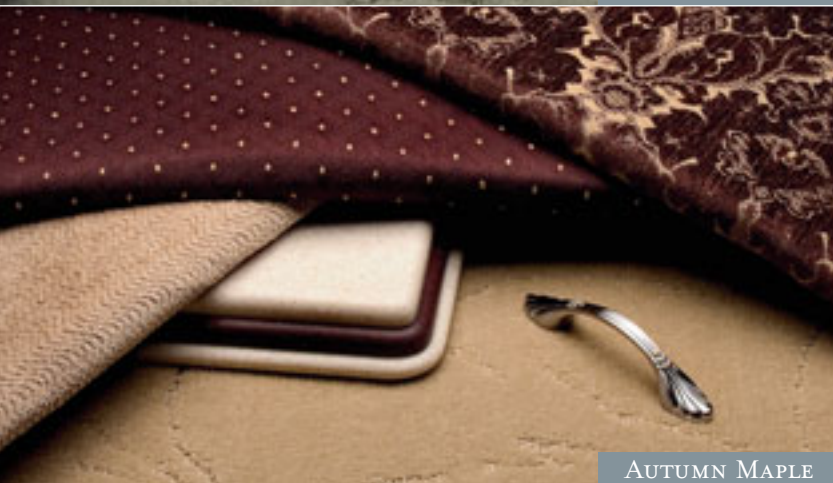
BAY BLUE



VERDE



RAW SILK



AUTUMN MAPLE



GOLDEN SURAT

Upper cabinet doors shown. Real woods will have variations in grain and color. Natural wood products will darken over time.



Oak Hardwood (Standard)



Coastal Cherry Hardwood



Summer Maple Hardwood



Velvet Cherry Hardwood



LINEN



BAY BLUE



VERDE



RAW SILK



AUTUMN MAPLE



GOLDEN SURAT

FULL-PAINT MASTERPIECE FINISH™

Newmar's Full-Paint Masterpiece Finish creates an exterior of stunning beauty and incredible endurance—a true work of art. As industry leaders in applying full body paint to motorhome coaches, we at Newmar are pleased to offer the Full-Paint Masterpiece Finish as a Mountain Aire Diesel Pusher Motorhome standard.

DIAMOND SHIELD

Diamond Shield Front Paint Protection Film is standard on all Mountain Aire Diesel Pusher Motorhomes. Diamond Shield Film protects the front against stone chips, scratches and bug acids. Diamond Shield Film is optically clear with a high gloss designed to keep the Full-Paint Masterpiece Finish looking new.

FEATURES

STANDARD FEATURES

MOTORIZED CHASSIS FEATURES

- Spartan® 400 HP Mountain Master Chassis Standard on 40 Ft. Floorplans
- Spartan 400 HP Mountain Master Chassis with Tag Axle Standard on 43 Ft. Floorplans
- Anti-Lock Braking System
- Back-Up Alarm
- Tilt & Telescope Steering Wheel
- Cruise Control
- Recessed Fuel Fills, with Crossover to Fill from Either Side
- Accubrite Aluminum Wheels

AIR CONDITIONING & HEATING

- Two 15M Penguin™ Heat Pump Central Air Conditioners
- Dash Heater & High Output Air Conditioner
- LP Furnace with In-Floor Ducted Heat
- LP Leak Detector

APPLIANCES & ACCESSORIES

- 30" Convection Microwave Oven
- Safe
- Roof-Mounted Air Horns
- Cable TV Connection with RG 6 Coax
- Exterior TV Jack, on Door Side
- Telephone Connection with Phone Jacks in Living Area and in Dash Area
- TV Antenna with Power Booster, One Exterior and Two Interior Jacks
- Dometic® I292 Refrigerator with Icemaker, 12 Cu. Ft.
- 12 Gallon Gas/Electric Water Heater, Direct-Spark Ignition
- Three-Burner Recessed Cooktop with Electronic Ignition
- Matching Corian® Range Cover
- TV Antenna Is Up Warning Light
- Interior Rearview Mirror with Electronic Compass and Temperature Display
- Hardwood-Framed Raised-Panel Refrigerator Front
- Carbon Monoxide Detector
- Sony® Flatscreen Color TV in Bedroom Area
- AM/FM Radio, Remote 6 Disc CD Player, and Combination Rearview Color Monitor System
- Sony Flatscreen Color TV in Living Area
- Sony Surround Sound System with VCR, DVD Player and Subwoofer
- Satellite Prep Phone, TV Jack and Receptacle
- Prep for Compact Washer/Dryer

CABINETS & FURNITURE

- Oak Hardwood Cabinets with Raised-Panel Double Cathedral Doors
- Drawers with Metal Guides
- Leather/Vinyl Heated Front Seats with Eight-Way Power Lumbar Support
- Corian Countertop with Integrated Sink Bowls and Flush Sink Covers in Kitchen
- Dinette Table with Corian Insert Top, Two Free-Standing Chairs and Two Folding Chairs
- Luxurious Pillowtop Mattress
- Villa® Furniture
- Cedar Paneling on Sidewall of Wardrobe
- Storage Shelves Recessed into Rear Cap

ELECTRICAL FEATURES

- Battery Disconnect for House Batteries
- 50 Amp Electrical Service with Flexible Cord on Power Cord Rewind Reel
- 2000 Watt Inverter
- Exterior Security Lights, One Installed on Each Side
- Fluorescent Lights in Ceiling and Overhead Cabinets
- Recessed Docking Lights
- Lights in Wardrobes

- Interior Courtesy Lights
- Emergency Engine Start Switch
- Four 6 Volt House Batteries on Pullout Tray
- Daytime Headlight System
- 5 Watt Solar Panel to Charge Chassis Battery
- 75 Amp Converter
- Midship Side Turn Signals
- Solar Prep, Wire From Roof to Battery Compartment
- Two 12 Volt Auxiliary Recepts on Dashboard
- 110 Volt and 12 Volt Lighting in Main Slideout
- Light in Exterior Storage Compartments, Controlled by Interior Master Switch
- Switched Receptacle for Engine Block Warmer
- 7.5 kW Onan® Quiet Series Diesel Generator
- Mood Lights Recessed in Ceiling
- ICC Light Flasher Switch
- Power Cord Rewind Wheel

EXTERIOR FEATURES

- Full-Paint Masterpiece Finish™ with Diamond Shield Front Protective Film
- Mud Flaps
- Undercoating
- Rear Protective Tow Guard with Stainless Steel Newmar Name Cutout

INTERIOR FEATURES

- Smoke Detector & 10 Bc Fire Extinguisher
- Mini-Blinds in Kitchen Area
- Padded Vinyl Ceiling
- Hardwood Fascia on Living Area and Bedroom Slideout
- Sunshades on Driver and Passenger Side Windows
- Quilted Bedspread with Reverse Sham, Matching Bed Base and Accent Pillows
- Power Driver and Passenger Side Sunshades
- Lined Day/Night Pleated Window Shades & Lambrequins
- Ceramic Floor Tile in Kitchen, Bathroom and Entrance Door Area
- Power-Activated Sun Visors
- Carpeting with High Density Padding in Bedroom, with Sculptured Carpet in Living Area

PLUMBING / BATH FEATURES

- Fiberglass Tub/Shower with Glass Shower Door
- Water Filter with Drink Dispenser at Kitchen Sink
- Monitor Panel
- Sewage Holding-Tank Rinse
- Automatic-Rewind Water-Hose Reel
- Water-Heater Bypass System
- Delta® Faucets in Kitchen and Bathroom, with Waterfall Spout in Kitchen
- Monoplex Water Pump Switch — Located in Bathroom, Above Entrance Door and Exterior Near Gate Valve
- Water Filter For Entire Unit
- Exterior Convenience Wash Station — Hot/Cold Water, Soap and Towel Dispenser
- Thefford™ Aria Sculptured China Stool
- Demand Water System with Aquajet™ "ES" Pump

CONSTRUCTION FEATURES

- Gelcoated Fiberglass Exterior Sides
- Convex Exterior Chrome Mirrors with Remote Control, Defrost, and Turn Signal Indicators
- Hitch for Towing Car, with 2 Extra 14-Gauge Wires — Class V, 10,000 Lb. Rating
- Four-Point Hydraulic Leveling Jacks with Automatic Control and Air Dump
- One-Piece Molded-Fiberglass Roof with 9 MM Decking
- Aluminum-Frame Sidewalls & Roof Construction, 16" on Center
- 5/8" Foam Insulation Laminated in Sidewalls and Ceiling
- Roof R-value Rating: 16

- Sidewall R-value Rating: 11
- Floor R-value Rating: 16
- Basement R-value Rating: 4

WINDOWS, AWNINGS & VENTS

- Automatic Entrance Door Step
- A&E® 9000 Window Awnings on Bedroom and Slideout Windows
- Lighted Acrylic Assist Handle at Entrance Door
- Fan-Tastic® Vent with Rain Sensor in Kitchen Area and Bathroom
- Skylight in Bathroom, Located Above the Tub/Shower
- Front Entry Door with Power Flush Stepwell Cover
- Driver's-Side Power Window
- Double-Pane, Tinted Safety-Glass Windows
- A&E Oasis Power Front Entrance-Door Awning
- A&E Slideout Awnings
- A&E Weather Pro Power Side Awning
- Cockpit Overhead Ventilation System

OPTIONAL FEATURES

MOTORIZED CHASSIS FEATURES

- Trip Tek Electronic Travel Information — Displayed onto Rearview Monitor Screen (5 Lb.)

AIR CONDITIONING & HEATING

- Hydronic Zone Heating System — U-Line Icemaker Not Available With This Option (225 Lb.)

APPLIANCES & ACCESSORIES

- 100 Lb. Capacity Norcold® Freezer on Pullout Tray (113 Lb.)
- Washer/Dryer
- Navigation System (8 Lb.)
- External Entertainment Center with 22" LCD TV and AM/FM CD Radio on Adjustable Swing Arm (132 Lb.)
- Sony 32" Plasma Color TV in Front Overhead Cabinet or in Dry Bar
- 30" Speedcook Advantium™ Microwave Oven (16 Lb.)
- Bose® Wave Radio with CD Player and Alarm Clock in Bedroom Area (15 Lb.)
- OnStar® System with First Year Service Included
- Norcold Four-Door Refrigerator with Icemaker and Water Dispenser (50 Lb.)
- Dishwasher in a Drawer Below 3 Burner Plate (65 Lb.)
- XM Satellite Radio Capability
- KVH® or Wineguard Satellite Dish

CABINETS & FURNITURE

- Summer Maple Hardwood Cabinets
- Coastal Cherry Hardwood Cabinets
- Velvet Cherry Hardwood Cabinets
- Center Entrance Door Layout (15 Lb.)
- Combination Desk/Dinette Table with Two Folding & Two Fixed Chairs (50 Lb.)

ELECTRICAL FEATURES

- Roof-Mounted Spotlight (3 Lb.)
- Automatic Generator Start on Low-Battery or Thermostat-Temperature Setting
- Energy Management System (34 Lb.)

INTERIOR FEATURES

- Hardwood Lambrequin Window Treatment in Living Area (30 Lb.)

CONSTRUCTION FEATURES

- Power Lock Arms on All Slideout Rooms (120 Lb.)

WINDOWS, AWNINGS & VENTS

- Keyless Entrance Door Pad
- Girard® Power Side Awning with Wind Sensor Remote Control (100 Lb.)

SPECIFICATIONS

FLOORPLAN SPECIFICATIONS

FLOORPLAN	APP. OVERALL LENGTH	WIDTH	APP. OVERALL HEIGHT	INTERIOR WIDTH	INTERIOR HEIGHT	GREY	SEWAGE	WATER	LP	FURNACE	WATER HEATER
MADP 4016	40' 06"	101.5"	12' 03"	95.5"	80"	65 gal.	45 gal.	105 gal.	32 gal.	42,000 Btu	12 gal.
MADP 4018	40' 06"	101.5"	12' 03"	95.5"	80"	65 gal.	45 gal.	105 gal.	32 gal.	42,000 Btu	12 gal.
MADP 4030	40' 06"	101.5"	12' 03"	95.5"	80"	65 gal.	45 gal.	105 gal.	32 gal.	42,000 Btu	12 gal.
MADP 4031	40' 06"	101.5"	12' 03"	95.5"	80"	65 gal.	45 gal.	105 gal.	32 gal.	42,000 Btu	12 gal.
MADP 4032	40' 06"	101.5"	12' 03"	95.5"	80"	65 gal.	45 gal.	105 gal.	32 gal.	42,000 Btu	12 gal.
MADP 4301	42' 06"	101.5"	12' 04"	95.5"	80"	65 gal.	45 gal.	105 gal.	32 gal.	42,000 Btu	12 gal.
MADP 4303	42' 06"	101.5"	12' 04"	95.5"	80"	65 gal.	45 gal.	105 gal.	32 gal.	42,000 Btu	12 gal.
MADP 4304	42' 06"	101.5"	12' 04"	95.5"	80"	65 gal.	45 gal.	105 gal.	32 gal.	42,000 Btu	12 gal.
MADP 4305	42' 06"	101.5"	12' 04"	95.5"	80"	65 gal.	45 gal.	105 gal.	32 gal.	42,000 Btu	12 gal.

SPARTAN® CHASSIS INFORMATION

FLOORPLAN	ENGINE HP	AXLE RATIO	FUEL CAP.	WHEELBASE	*FRONT GAWR	*REAR GAWR	TAG GAWR	*GVWR	*GCWR	APP. UVW	APP. NCC
MADP 4016	400	4.88	150 gal.	276"	14,200 lb.	20,000 lb.		34,200 lb.	44,200 lb.	28,792 lb.	5,408 lb.
MADP 4018	400	4.88	150 gal.	276"	14,200 lb.	20,000 lb.		34,200 lb.	44,200 lb.	28,210 lb.	5,990 lb.
MADP 4030	400	4.88	150 gal.	276"	14,200 lb.	20,000 lb.		34,200 lb.	44,200 lb.	28,610 lb.	5,590 lb.
MADP 4031	400	4.88	150 gal.	276"	14,200 lb.	20,000 lb.		34,200 lb.	44,200 lb.	29,210 lb.	4,990 lb.
MADP 4032	400	4.88	150 gal.	276"	14,200 lb.	20,000 lb.		34,200 lb.	44,200 lb.	29,285 lb.	4,915 lb.
MADP 4301	400	4.88	150 gal.	276"+TAG	14,200 lb.	20,000 lb.	10,000 lb.	44,200 lb.	54,200 lb.	31,590 lb.	12,610 lb.
MADP 4303	400	4.88	150 gal.	276"+TAG	14,200 lb.	20,000 lb.	10,000 lb.	44,200 lb.	54,000 lb.	32,945 lb.	11,255 lb.
MADP 4304	400	4.88	150 gal.	276"+TAG	14,200 lb.	20,000 lb.	10,000 lb.	44,200 lb.	54,200 lb.	32,330 lb.	11,870 lb.
MADP 4305	400	4.88	150 gal.	276"+TAG	14,200 lb.	20,000 lb.	10,000 lb.	44,200 lb.	54,000 lb.	31,670 lb.	12,530 lb.

Lengths, Heights, Widths and Dry Weights are approximate. Weight will vary based on optional equipment added to the above base weight.

GAWR: Gross Axle Weight Rating is the maximum permissible weight for an axle.

GVWR: Gross Vehicle Weight Rating is the maximum permissible weight of a fully loaded motorhome.

GCWR: Gross Combination Weight Rating is the value specified by the manufacturer of the vehicle as the maximum allowable loaded weight of this motorhome and any towed trailer or towed vehicle.

UVW: Unloaded Vehicle Weight is the weight of this motorhome as built at the factory with full fuel, engine oil and coolants. The UVW does not include cargo, fresh water, LP gas or dealer-installed accessories.

NCC: Net Carrying Capacity is the maximum weight of all occupants, including the driver, personal belongings, food, fresh water, waste water, LP gas, tools, tongue weight of towed vehicle, dealer-installed accessories, etc., that can be carried by the motorhome.

* Specifications supplied by chassis manufacturer.

MOUNTAIN MASTER

The Mountain Master chassis is America's most popular, premium, high horsepower diesel pusher. This premium world-class chassis is the flagship of Spartan Chassis, Inc. The Spartan Mountain Master and Mountain Master GT doesn't just lead the way, it paves the way! Experience the power, the superior ride and handling, plus the excellent driving performance with the Spartan Mountain Master chassis. The Mountain Master chassis provides excellent resale value and carries a 36 month, 50,000 mile, no deductible warranty, which includes road side assistance for the entire warranty period. So sit back and enjoy the ride!



In keeping with our tradition of bringing our customers the highest-quality products in the industry, Newmar works with the following manufacturers to supply components for our vehicles.

SONY.

Dometic® The Sign of Comfort

DIAMOND SHIELD



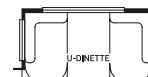
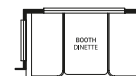
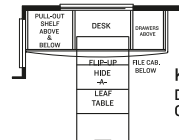
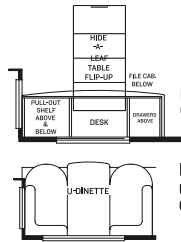
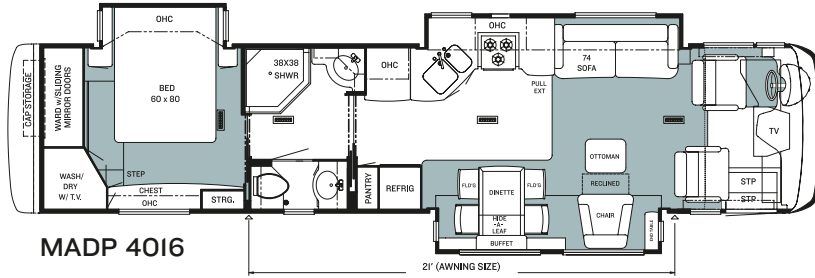
www.dometic.com

www.diamond-shield.com

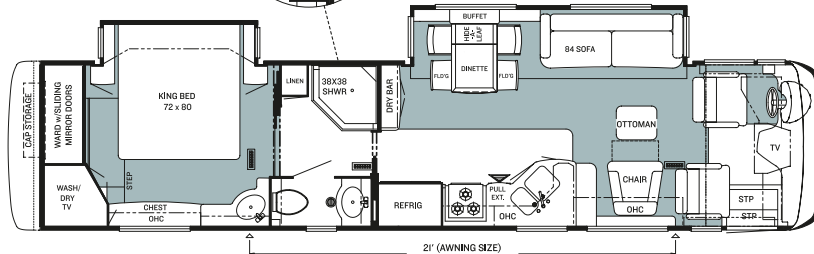
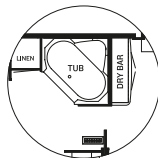
www.spartanchassis.com



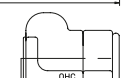
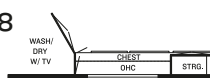
FLOORPLANS

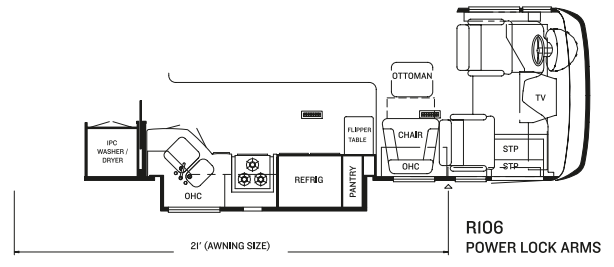
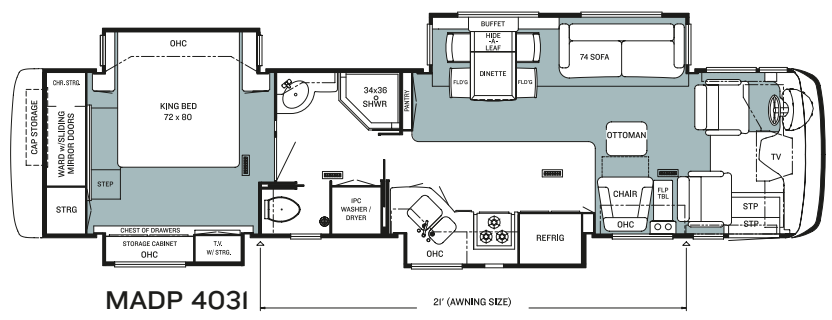
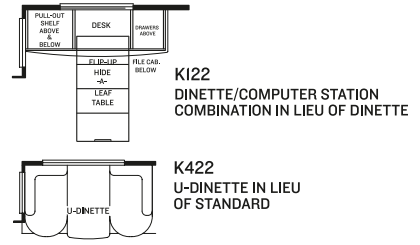
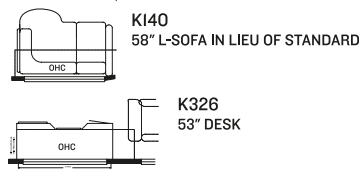
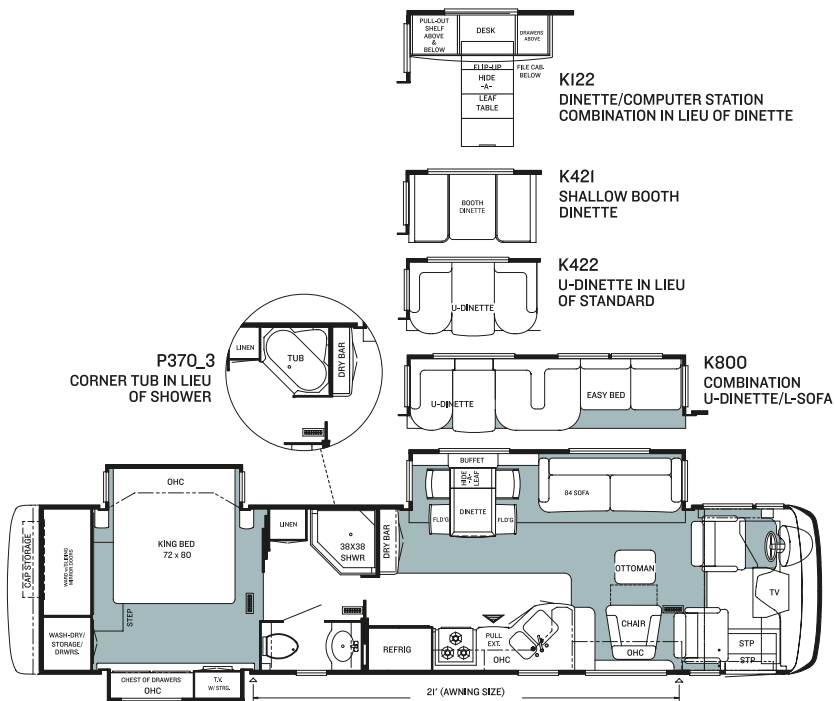


P370_2
39" CORNER TUB IN LIEU
OF STANDARD

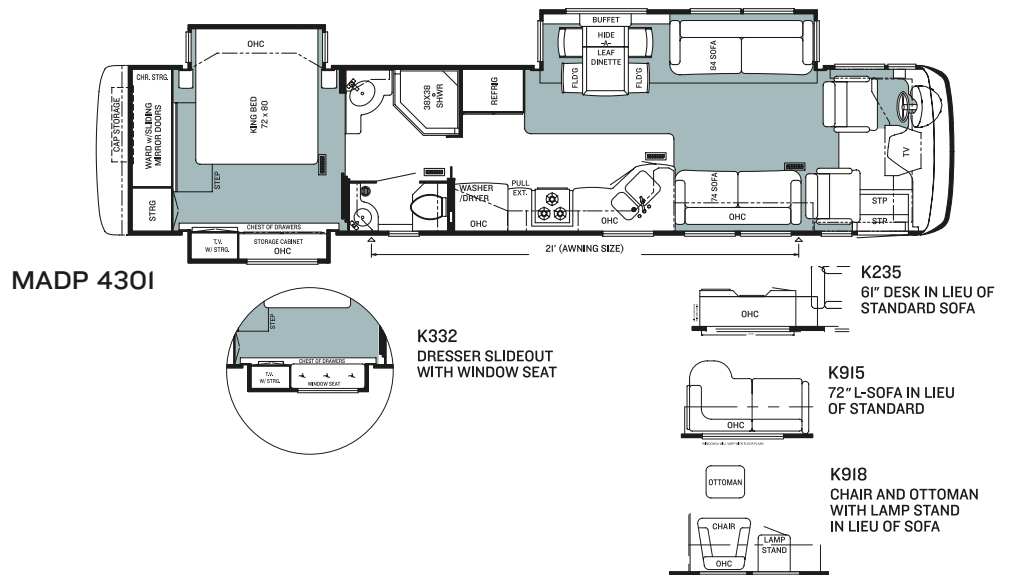
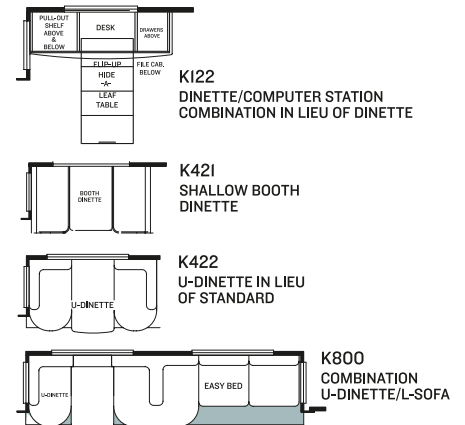
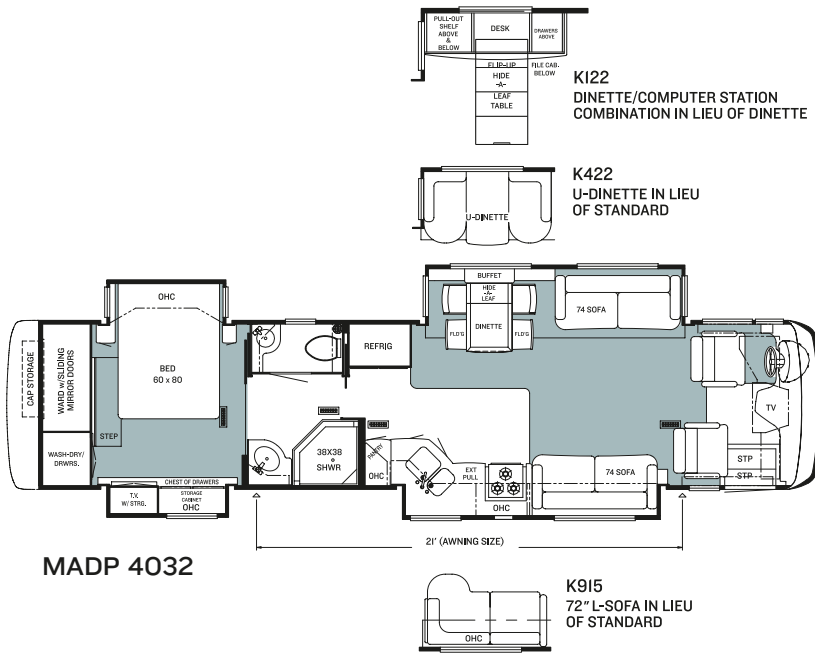


MADP 4018





FLOORPLANS



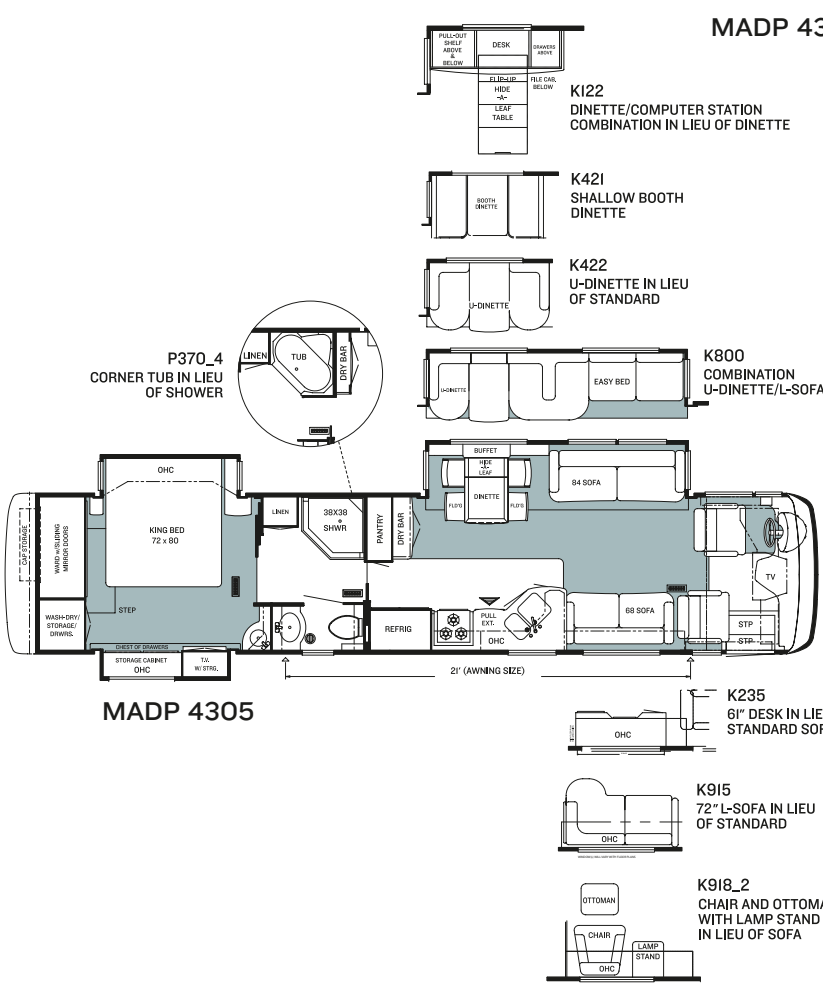
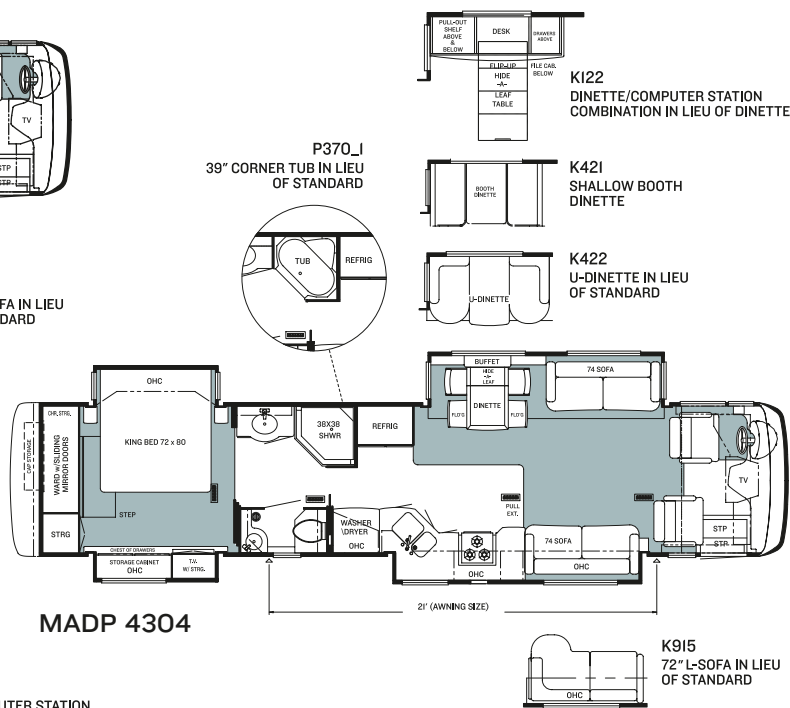
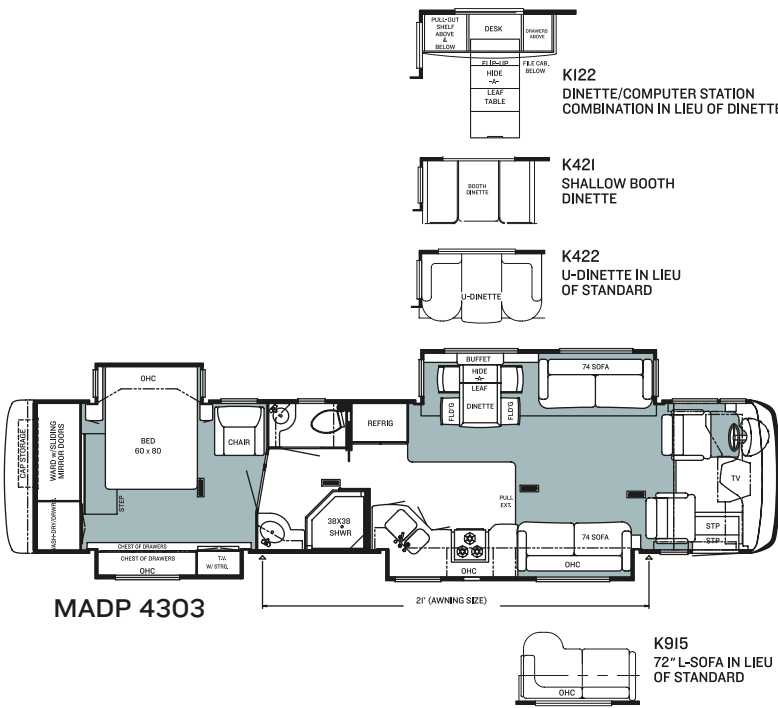
NEWMARCORP.COM

Visit our Web site. Here you'll easily access the most up-to-date Newmar product information, model specifications, floorplans and options. You'll also learn more about who we are, how we work and what we believe in. Become a registered user—for free—and you'll also get access to the latest event data, technical and service tips and the location of your nearest Newmar dealer. This isn't just our site—it's yours.

THE NEWMAR FACTORY TOUR

We'd love to have you visit our state-of-the-art production facility in Nappanee, Indiana. Factory tours are given Monday through Friday at 10 a.m. and 1 p.m. (Indiana time). Pre-registration is not required but is helpful, since tour-group sizes may be limited from time to time. Please arrive 15 minutes before the hour and check in at the tour area that is located in Building Nine on Cheyenne Street. No open-toed sandals can be worn, and children under the age of eight are not allowed to take the tour.

For more information or to pre-register, please call 800.860.0086.





NEWMAR QUALITY: A WAY OF LIFE

NEWMAR CORPORATION
355 N DELAWARE ST
PO BOX 30
NAPPANEE IN 46550-0030
574-773-7791 Fax 574-773-2895
www.newmarcorp.com

Your Official Mountain Aire Dealer: