

ALLEGRO BUS



TIFFIN MOTORHOMES



'05

WHEREVER YOU GO, WE GO.

FABRICS & CABINETS '05

CHESTNUT



Bedroom



Bedroom Accent



Sofa



Living Area Accent



Natural Maple

MINERAL



Bedroom



Bedroom Accent



Sofa



Living Area Accent



Oak

SOUTH PACIFIC



Bedroom



Bedroom Accent



Sofa



Living Area Accent



Stained Cherry



Natural Cherry

CARPETS



Clay



Wheat



Walnut

EXTERIOR PAINT COLORS & ALLEGRO BUS FLOORPLANS '05



SILVER SAND FULL BODY



SUNLIT SAND FULL BODY



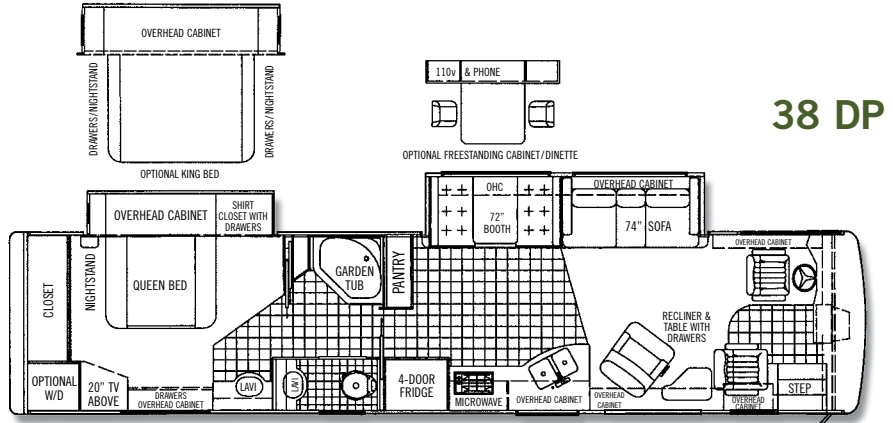
NASA FULL BODY



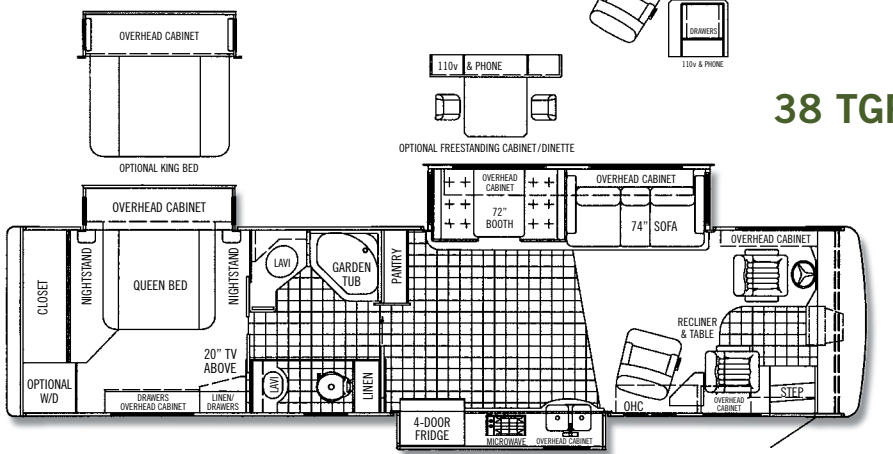
STONE FULL BODY



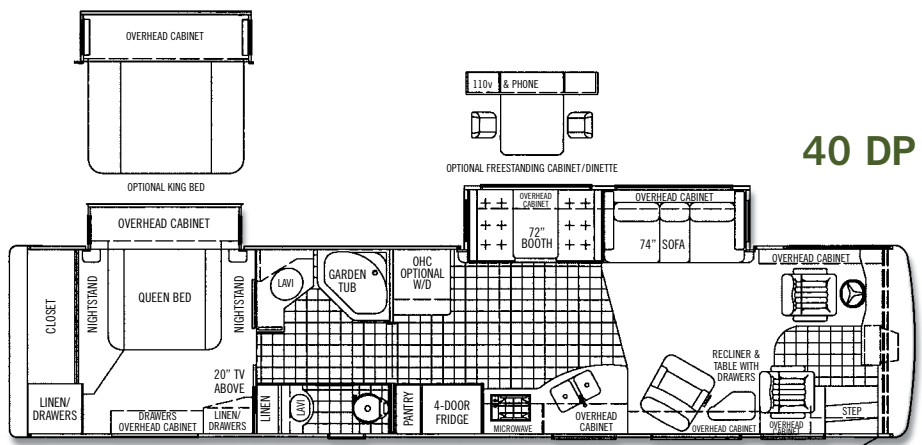
DELTA FULL BODY



38 DP



38 TGP

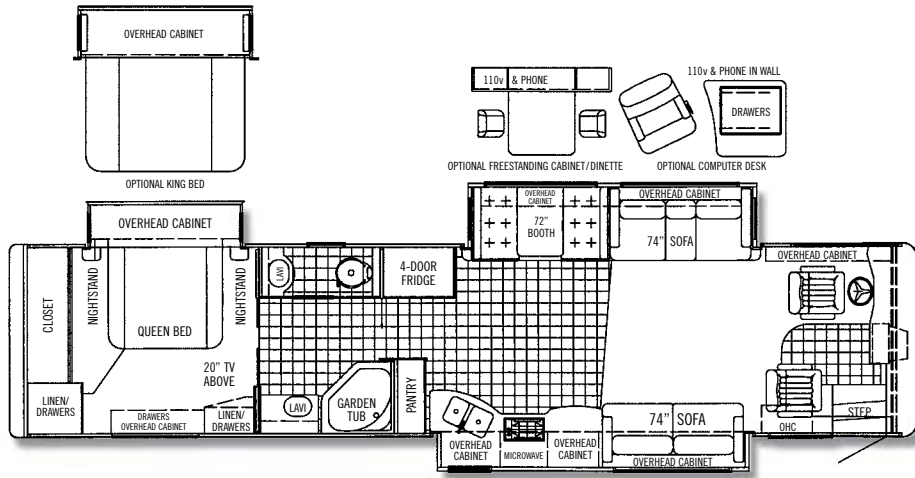


40 DP

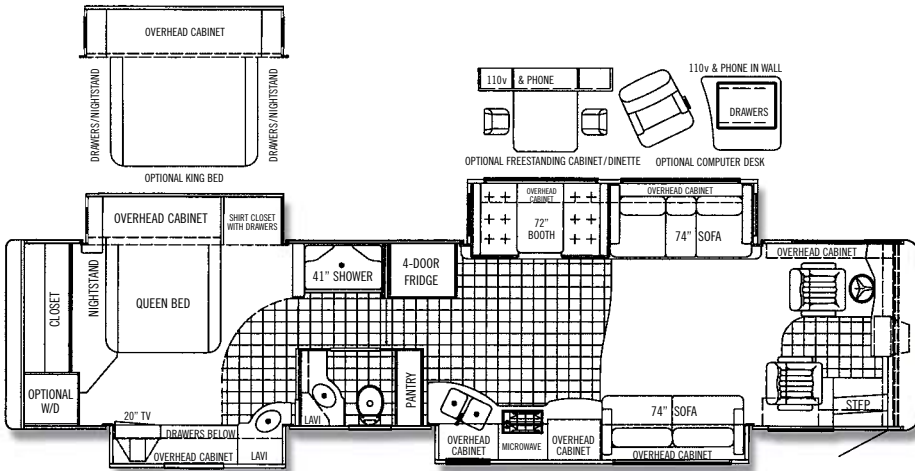
We offer five different exterior full body paint packages.

Aside from our unparalleled customer service, one of the things that Tiffin has been known for over the years is innovative floor plans.

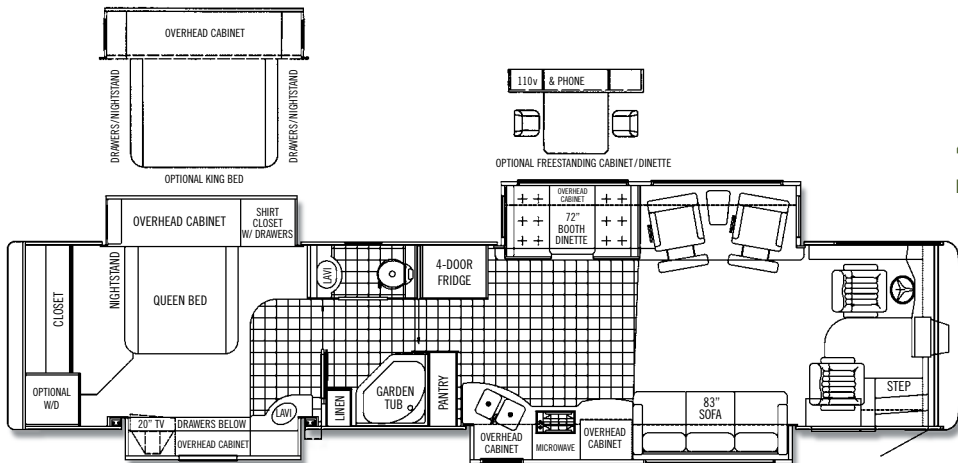
ALLEGRO BUS FLOORPLANS '05



40 TSP



40 QDP



42 QDP
NEW FLOORPLAN

ADDITIONAL FLOORPLANS MAY BE AVAILABLE ON OUR WEBSITE.
www.tiffinmotorhomes.com

ALLEGRO BUS SPECIFICATIONS '05

AUTOMOTIVE

STANDARD EQUIPMENT ON ALL MODELS:

- Cast Aluminum Wheels
- Allison 3000MH 6-Speed Auto with Lock-up (Torque Converter)
- ABS Brakes
- Emergency Start Switch
- Michelin Tires
- Cummins 400 Engine / Side Radiator
- Fully Automatic Leveling Jacks
- Exhaust Brake
- Air Ride (4 Bags)
- Air Brakes with Automatic Slack Adjusters
- Cruise Control

| FREIGHTLINER CHASSIS | MODEL | 38 DP | 38 TGP | 40 DP | 40 TSP | 40 QDP | 42 QDP |
|------------------------|-------|--------------|--------------|--------------|--------------|--------------|--------------|
| GVWR | | 32,000 | 32,000 | 32,000 | 32,000 | 32,000 | 44,600 |
| GAWR – Front | | 12,000 | 12,000 | 12,000 | 12,000 | 12,000 | 14,600 |
| GAWR – Rear | | 20,000 | 20,000 | 20,000 | 20,000 | 20,000 | 20,000 |
| GAWR – Tag Axle | | NA | NA | NA | NA | NA | 10,000 |
| GCWR | | 42,000 | 42,000 | 42,000 | 42,000 | 42,000 | 54,600 |
| UVW | | 23,760 | 23,760 | 24,240 | 24,820 | 24,820 | TBD |
| Alternator Amps | | 160 | 160 | 160 | 160 | 160 | 160 |
| Wheel Base | | 262" | 262" | 276" | 276" | 276" | 306 |
| Tire Size | | 275/80R 22.5 | 275/80R 22.5 | 275/80R 22.5 | 275/80R 22.5 | 275/80R 22.5 | 275/80R 22.5 |
| Trailer Hitch Capacity | | 10,000 | 10,000 | 10,000 | 10,000 | 10,000 | 10,000 |
| Fuel Tank (Gallons) | | 150 | 150 | 150 | 150 | 150 | 150 |

| OVERALL | MODEL | 38 DP | 38 TGP | 40 DP | 40 TSP | 40 QDP | 42 QDP |
|--|-------|---------|---------|--------|--------|--------|--------|
| Overall Length – Approximately | | 38' 11" | 38' 11" | 40' 4" | 40' 4" | 40' 4" | 42' 6" |
| Overall Height with Roof Air (Maximum) | | 12' 7" | 12' 7" | 12' 7" | 12' 7" | 12' 7" | 12' 7" |
| Interior Height | | 84" | 84" | 84" | 84" | 84" | 84" |
| Overall Width | | 101" | 101" | 101" | 101" | 101" | 101" |
| Interior Width | | 96" | 96" | 96" | 96" | 96" | 96" |
| Fresh Water (Gallons) | | 90 | 90 | 90 | 90 | 90 | 90 |
| Black Water (Gallons) | | 46 | 46 | 46 | 46 | 46 | 46 |
| Grey Water (Gallons) | | 70 | 70 | 70 | 70 | 70 | 70 |
| LPG Tank (Gallons; can only be filled to 80% capacity) | | 35 | 35 | 35 | 35 | 35 | 24 |
| Minimum Garage Height | | 13' | 13' | 13' | 13' | 13' | 13' |

STRUCTURAL

STANDARD EQUIPMENT ON ALL MODELS:

- Laminated Floor, Sidewall & Roof
- Steel/Aluminum Reinforced Structure

EXTERIOR

STANDARD EQUIPMENT ON ALL MODELS:

- Fiberglass Front & Rear Caps
- Dual Pane Tinted Windows
- Four - 6v House Batteries
- Fiberglass Roof
- Dual Fuel Fills
- Exterior Patio Light
- 2000 Watt Inverter
- Spot Light with Remote
- Full Body Paint
- Electric Door Awning
- Custom Full-Width Mud Flap
- Air Horns
- Large One-Piece Tinted Windshield
- Electric Patio Awning
- 50 Amp Service
- Automatic Satellite Dish
- 7.5 Kw Onan Generator with Manual Slideout
- Window Awning Package
- Power Cord Reel - 50 Amp
- TV Antenna
- Heated Power Mirrors with Remote Adjustment (Chrome)
- Slideout Awnings
- Park Telephone Ready
- CB Radio Antenna
- Single Motor Intermittent Wiper
- Pass-thru Basement Storage
- Cable Ready TV
- Power Fantastic Roof Vent with 3 speed Fan
- Gel-Coat Fiberglass Walls
- Exterior Flip-up Storage Doors with Gas Shocks
- Black Holding Tank Flush System
- 2 - 15,000 BTU Low Profile Roof A/C with Heat Pump
- Fog Lights
- Single Handle Lockable Storage Door Latches
- Exterior Rinse Hose with Soap Dispenser and Paper Towel Holder
- Roof Ladder
- Deadbolt Front Entrance Door
- Heated Water and Holding-Tank Compartments
- 110v Exterior Receptacle
- Sony® Color Backup Camera and Monitor
- Double Electric Step
- Luggage Compartment Lights
- Undercoating
- Water Filter
- Docking Lights

| | MODEL | 38 DP | 38 TGP | 40 DP | 40 TSP | 40 QDP | 42 QDP |
|---|-------|-------|--------|-------|--------|--------|--------|
| Keyless Entry Door System | | 0 | 0 | 0 | 0 | 0 | 0 |
| Slideout Rooms | | 2 | 3 | 2 | 3 | 4 | 4 |
| Storage Compartment Slideout Tray | | 0 | 0 | 0 | 0 | 0 | 0 |
| In-motion Satellite Dish | | 0 | 0 | 0 | 0 | 0 | 0 |
| Exterior Entertainment Center with 20" TV, AM/FM/CD Player & Speakers | | 0 | NA | 0 | NA | NA | NA |
| Exterior Entertainment Center with 13" TV, AM/FM/CD Player & Speakers | | NA | NA | NA | 0 | 0 | 0 |
| Extra Fantastic Fan | | 0 | 0 | 0 | 0 | 0 | 0 |
| 10.0 Kw Onan Generator with Manual Slideout | | NA | NA | NA | NA | NA | S |
| 3 - 13,500 BTU Low Profile Roof A/C with Heat Pump | | NA | NA | NA | NA | NA | S |

DRIVER'S COMPARTMENT

STANDARD EQUIPMENT ON ALL MODELS:

- Entry Floor Light
- Power Ultra Leather Driver Seat (Flexsteel)
- 12v Dash Receptacle
- Power Sun Visors
- Step Switch & 12v Disconnect Switch
- Ultra Leather Passenger Seat with Power Footrest (Flexsteel)
- Tilt/Telescoping Steering Wheel
- Panasonic VCR
- Automotive Padded Dash
- Passenger Seat Console Box with Built-in Magazine Rack
- Dual Dash Fans
- Fire Extinguisher
- Lighted Instrument Panel
- Single In-dash CD Player AM/FM Stereo
- Windshield Privacy Curtain
- Beverage Tray

ALLEGRO BUS SPECIFICATIONS '05

DRIVER'S COMPARTMENT (cont'd)

| MODEL | 38 DP | 38 TGP | 40 DP | 40 TSP | 40 QDP | 42 QDP |
|-------------------------------|-------|--------|-------|--------|--------|--------|
| Handheld CB Radio | 0 | 0 | 0 | 0 | 0 | 0 |
| 6 Disc In-dash CD Changer | 0 | 0 | 0 | 0 | 0 | 0 |
| Rear-View Mirror with Compass | 0 | 0 | 0 | 0 | 0 | 0 |
| Side-View Camera | 0 | 0 | 0 | 0 | 0 | 0 |
| 32" LCD TV | 0 | 0 | 0 | 0 | 0 | 0 |

LIVING AREA/DINETTE

STANDARD EQUIPMENT ON ALL MODELS:

- Cloth Easy Bed (Flexsteel)
- Booth Dinette with Solid Surface Table Top

| MODEL | 38 DP | 38 TGP | 40 DP | 40 TSP | 40 QDP | 42 QDP |
|---|-------|--------|-------|--------|--------|--------|
| Cloth Recliner (Flexsteel) with End Table (Driver side on 40 TSP & 40 QDP) | S | S | S | 0 | 0 | NA |
| Ultra Leather Euro-Recliner | 0 | 0 | 0 | NA | NA | NA |
| Ultra Leather Recliner (Flexsteel) | 0 | 0 | 0 | NA | NA | NA |
| Cloth Magic Bed | 0 | 0 | 0 | 0 | 0 | NA |
| Ultra Leather Magic Bed | 0 | 0 | 0 | 0 | 0 | NA |
| Ultra Leather Love Seat with 62" EZ Bed Sleeper (Flexsteel) | 0 | NA | 0 | NA | NA | NA |
| 74" Ultra Leather Sofa Living Room Slide | NA | NA | NA | 0 | 0 | NA |
| Ultra Leather J-Lounge Sofa | 0 | NA | 0 | NA | NA | NA |
| Free Standing Legless Dinette with Solid Surface Table Top with Built-in Cabinets | 0 | 0 | 0 | 0 | 0 | 0 |
| Computer Desk with Recliner (Driver side on 40 TSP & 40 QDP) | 0 | NA | 0 | 0 | 0 | NA |
| Two Recliners with Lounge Table (Driver side) | NA | NA | NA | NA | NA | S |
| 83" Ultra Leather Sofa (Passenger side) | NA | NA | NA | NA | NA | S |

KITCHEN

STANDARD EQUIPMENT ON ALL MODELS:

- Polished Solid Surface Countertops
- Single Lever Sink Faucet with Built-in Sprayer
- Stainless Steel Convection Microwave
- Solid Surface Sink Covers
- Double Bowl Stainless Steel Sink
- 2-Burner Glass Cooktop

| MODEL | 38 DP | 38 TGP | 40 DP | 40 TSP | 40 QDP | 42 QDP |
|--|-------|--------|-------|--------|--------|--------|
| Drop-in Oven with 3-Burner Cooktop | 0 | 0 | 0 | 0 | 0 | 0 |
| 4-Door Stainless Steel Refrigerator with Ice Maker | S | S | S | S | S | S |
| Dishwasher (Not available with drop-in oven) | NA | 0 | NA | 0 | 0 | 0 |

BATH

STANDARD EQUIPMENT ON ALL MODELS:

- Two Medicine Cabinets with Vanity Lights
- Solid Surface Vanity Top & Bowl
- Fiberglass Molded Tub or Shower
- Skylight in Shower
- Electric Flush Toilet

| MODEL | 38 DP | 38 TGP | 40 DP | 40 TSP | 40 QDP | 42 QDP |
|---------------------------|-------|--------|-------|--------|--------|--------|
| Linen Closet Above Toilet | S | S | S | S | NA | S |

BEDROOM

STANDARD EQUIPMENT ON ALL MODELS:

- Inner Spring Pillow-top Mattress
- Solid Surface Night Stand Tops
- Flat Screen TV
- Carbon Monoxide Detector
- Bed Comforter with Throw Pillows
- Cedar-lined Wardrobe
- Laundry Hamper
- LPG Leak Detector
- Decorative Mirrored Headboard

| MODEL | 38 DP | 38 TGP | 40 DP | 40 TSP | 40 QDP | 42 QDP |
|----------|-------|--------|-------|--------|--------|--------|
| King Bed | 0 | 0 | 0 | 0 | 0 | 0 |

GENERAL INTERIOR

STANDARD EQUIPMENT ON ALL MODELS:

- 7' Ceilings
- 12v Fluorescent Lights
- Wall-to-Wall Carpeting in Bedroom & Living Room
- Tank Level Monitor System
- Soft Touch Vinyl Ceiling
- Enclosed Surround Sound Speakers
- Black-out Day / Night Shades in Bedroom & Living Room
- Smoke Detector
- Raised Panel Cabinet Doors
- Plumbed for Washer / Dryer with Cabinet
- Porcelain Tile Flooring in Kitchen, Bath & Entrance Landing
- Central Vacuum Cleaner
- Soft Cloth Covered Cabinet Shelves
- Power Roof Vent with 3-Speed Fan
- 10-Gal DSI Gas / Electric Water Heater (NA on 42 QDP)
- Air Driven Step Well Cover

| MODEL | 38 DP | 38 TGP | 40 DP | 40 TSP | 40 QDP | 42 QDP |
|--|-------|--------|-------|--------|--------|--------|
| Oak Cabinetry | 0 | 0 | 0 | 0 | 0 | 0 |
| Natural Maple Cabinetry | 0 | 0 | 0 | 0 | 0 | 0 |
| Walnut Cabinetry | 0 | 0 | 0 | 0 | 0 | 0 |
| Natural Cherry Cabinetry | 0 | 0 | 0 | 0 | 0 | 0 |
| Stained Cherry Cabinetry | 0 | 0 | 0 | 0 | 0 | 0 |
| Washer / Dryer | 0 | 0 | 0 | 0 | 0 | 0 |
| Hydraulic Heating System | 0 | 0 | 0 | 0 | 0 | S |
| One 35,000 BTU and One 20,000 BTU Ducted Furnace | S | S | NA | NA | NA | NA |
| One 42,000 BTU and One 20,000 BTU Ducted Furnace | NA | NA | S | NA | NA | NA |
| Two 30,000 BTU Ducted Furnaces | NA | NA | NA | S | S | NA |

All options may not be available in all models. Because of progressive improvements, specifications, standard and optional equipment are subject to change without notice or obligation.