



# Cardinal

BY FOREST RIVER





**STUNNING EXTERIOR GRAPHICS**

With models ranging in size from 29' to 37', there is sure to be a Cardinal floorplan to fit your family's needs and budget. A designer graphics package combines with the sleek front and rear fiberglass cap for a look that is sure to turn heads.





### BEAUTIFULLY CRAFTED INTERIORS

The all-new Cardinal Fifth wheel from Forest River features the perfect blend of fresh designer interiors, beautiful hand-crafted cabinetry and well thought-out, functional floorplans. Flush floor super slide-out rooms combine with large panoramic windows to create a more open feel of interior spaciousness. You'll appreciate the attention to detail found in every Cardinal, from the decorator window valances to the oak edged countertops and decorative oak trim accents found throughout the coach. (Left) The french doors and solid oak dentil woodwork brings the refined qualities of home on the road.



### DESIGNED FOR MAXIMUM COMFORT AND LIVABILITY

When designing the new Cardinal Fifth wheel, our customers provided valuable input which played a big role in the development of features like this innovative entertainment center/work desk/fireplace slide-out. Perfect for working on the computer or catching up with paper work, the desk features a slide-out keyboard section and spacious drawers. The entertainment center features a 27" color television, a storage drawer for a VCR or DVD, as well as a beautiful optional fireplace that can really warm up the living room on a chilly night. The rocker/recliners (standard) are great for reading or watching your favorite movies.

**CARDINAL**



**A KITCHEN DESIGNED WITH YOU IN MIND**

Highlighted by raised-panel cathedral cabinet doors, oak-edged countertops, well-placed appliances, and an abundance of overhead and base cabinet storage, including a pull-out pantry, the Cardinal Fifth wheel kitchen provides the perfect setting for all your food preparation needs.



**PRACTICAL DINING SOLUTIONS**

There's more than enough room to entertain family or friends with the optional oak-crafted free-standing dinette table and chairs shown in this Cardinal Fifth wheel. Elegant day/night shades offer privacy in the evening while allowing sunlight in during the day.

Our engineers do their best to maximize living space while providing additional storage opportunities – like this handy storage compartment located below the seat cushion.



### **37RL SLIDE-OUT KITCHEN**

(Shown above) Model 37RL slide-out kitchen gives you extra features like a combination range vent/microwave to keep the microwave lower to the floor. Cardinal also uses a refrigerator with a temperature adjustment. It's the little details that make Cardinals more enjoyable.

### **DOUBLE REFRIGERATOR FLOORPLANS**

Cardinal gives you two floorplans (36TS & 37RL) that come with two 8 cubic feet refrigerators to give you plenty of storage for those long stays.

**CARDINAL**



### **A RELAXING AND INVITING RETREAT**

Another great Cardinal standard feature is our spacious bedroom slide-out configuration that allows for a beveled mirror wardrobe across the full width of the coach with 80" queen beds, or 72" x 80" king size beds (depending on model) as well as a convenient vanity area with an abundance of overhead and base cabinetry storage along the sidewall, including an area for a television. The dentil molding, located on the oak facia, can be found throughout the floorplan adding refined luxury to the bedroom. The bedroom and bathroom floors are on the same level – no stepping up or down in the middle of the night.



### **DESIGNED WITH DETAILS IN MIND**

The attention to detail is evident in the matching marble finish in the shower and sink. The sink features a single lever faucet and an extra deep sink basin right beside the shower for convenience.



**TRUE RESIDENTIAL STYLING**

The Cardinal's oversized glass shower enclosure with skylight above features more shoulder room than many residential showers. The large bedroom vanity with overhead cabinet gives you extra storage.

**BEDROOM AMENITIES**

The Cardinal's bedroom hosts plenty of storage for anything you need on your trip. The solid oak raised panel doors and drawers, wood edged countertops and fluted opaque glass inserts are beautiful touches for the bedroom. The 19" television spot provided allows you to place your television, and watch the morning news.



**CARDINAL**



**PLUG-IN THE POWER**

The standard 50 amp power cord is detachable for easy storage and is great during the winter months.



**SAFE KEEPING**

Lock away your personal items in Cardinal's safe for extra security.



**STANDARD CEILING FAN**

This deluxe fan has three adjustable lights.



**A TOUCH OF HOME**

The single level kitchen faucet comes complete with a spray handle that simply slides out for simple tasks like washing and preparing food. Just another detail suggested by customers for a more enjoyable RV-ing experience.

**CREATIVE STORAGE COMPARTMENTS**

The optional oak step provides additional storage space with a piano hinge all along the back to allow easy opening and closing. The laminated wood plank floor (shown right) is optional.

**NEW SOFA STYLE**

Feature fabric on seating surface with solid suede-like fabric. (Standard on Mocha, Cilantro, Merlot, Willow and Birch. N/A on Colton Blue or Sable.)







#### **OPTIONAL CUSTOM PAINT PACKAGE**

Choose how you want your Cardinal to look. The optional custom paint package has a beautiful gold finish. You'll be the envy of your neighborhood.



#### **WHERE THE RUBBER MEETS THE ROAD**

(Above Left) If you take the time to look closely, you'll find aluminum alloy wheels on most Cardinal models. (Above Right) The underbelly of Cardinals are made of corrugated galvanized steel panels. These steel panels are complete in 4' sections for easier access to tanks. They're rust proof and there is less sagging over time, keeping your Cardinal in mint condition.

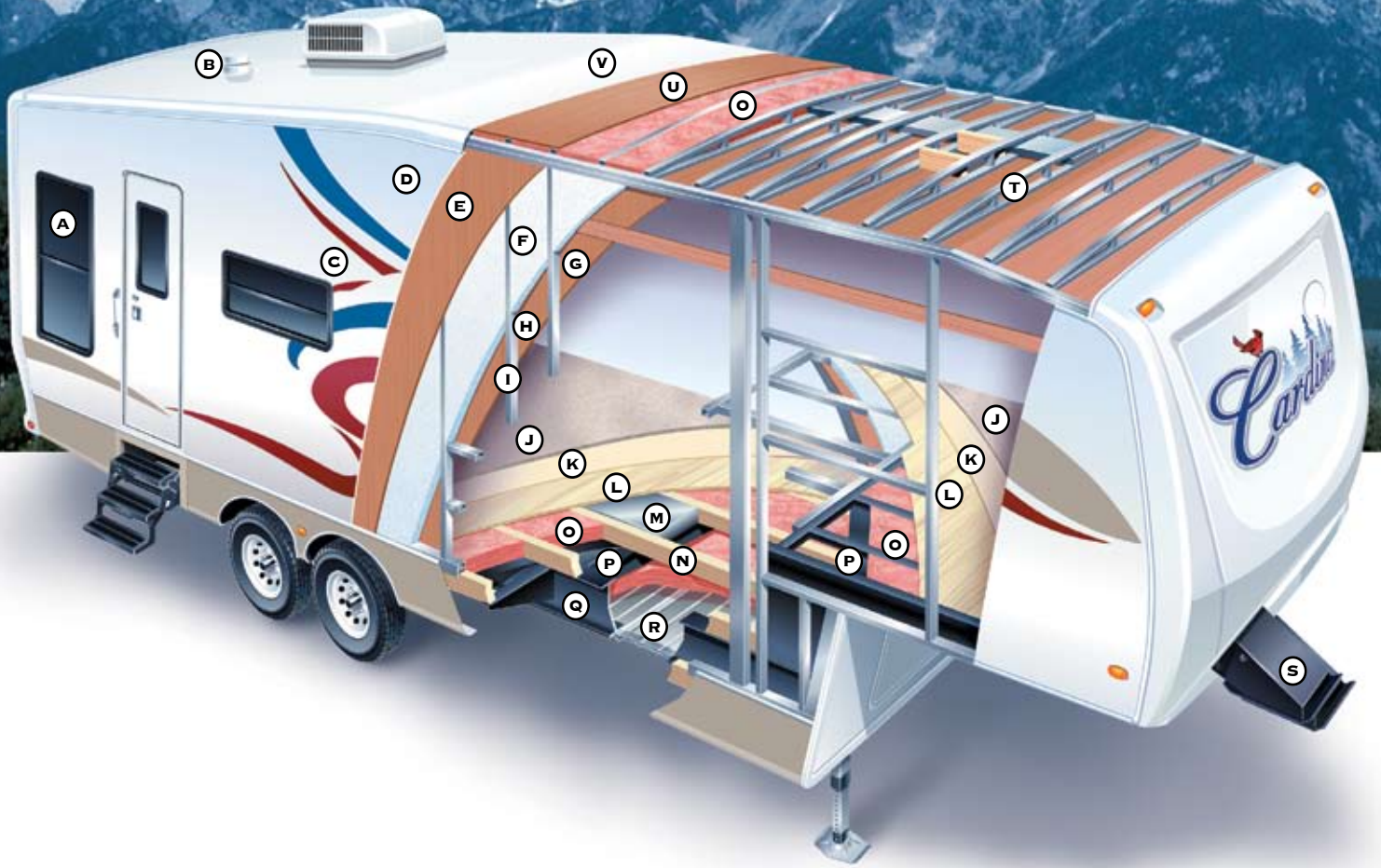
#### **RESIDENTIAL BATHROOM AMENITIES**

(Left) The foot-flush porcelain toilets are more sanitary than the competition's plastic substitutes and add to the residential design in Cardinal bathrooms.



### **CARDINAL FEATURES**





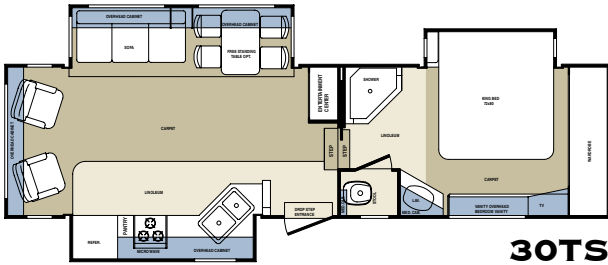
### **BUILT TO STAND THE TEST OF TIME**

It is both quality construction materials and innovative engineering techniques that have set the Cardinal apart from the competition. Cardinal's ultra-strong steel I-beam frame serves as the foundation for our floor, sidewall and roof systems which are the strongest, most durable in the industry. By taking the time to integrate each structural component, we are drastically improving the Cardinal's ability to take the wear and tear of road travel. This means that every Cardinal is built to stand the test of time – from the inside out!

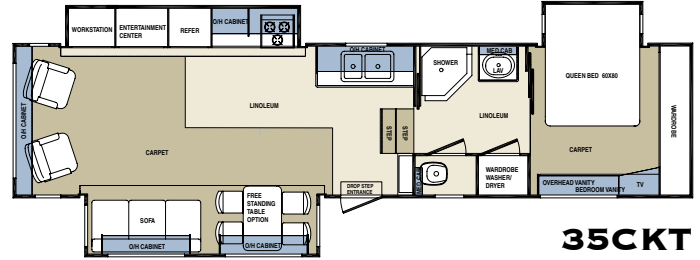
- A DARK TINTED WINDOWS**
- B ATTIC VENT**
- C DELUXE GRAPHICS PACKAGE**
- D SMOOTH FIBERGLASS EXTERIOR**
- E LUAN**
- F BLOCK FOAM INSULATION**
- G DECORATIVE WALL BOARD**
- H ELECTRO-GALVANIZED SHEET (EGS)  
METAL BACKING STRIP**
- I WELDED TUBULAR ALUMINUM  
STUDS (2" WALL)**
- J PLUSH CARPET**
- K SOFT FOAM PADDING**

- L TONGUE AND GROOVE PLYWOOD  
FLOOR DECKING**
- M LARGE CAPACITY HEAT DUCT**
- N 2" X 3" TRUSSES**
- O FIBERGLASS INSULATION (R-14)**
- P BLACK POLYMAX MOISTURE BARRIER**
- Q 10" STEEL I-BEAM**
- R GALVANIZED UNDERBELLY**
- S EXTENDED HITCHPIN**
- T ALUMINUM ROOF TRUSSES (OPTIONAL)**
- U 3/8" DECKING**
- V ONE-PIECE EPDM RUBBER ROOF  
(12 YR. WARRANTY)**

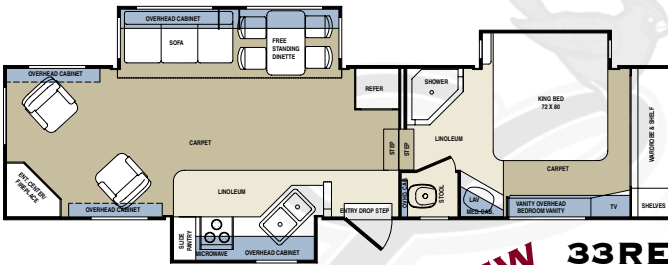
# CARDINAL FLOORPLANS



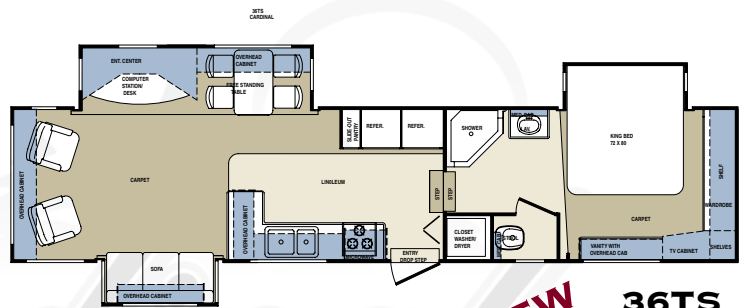
**30TS**



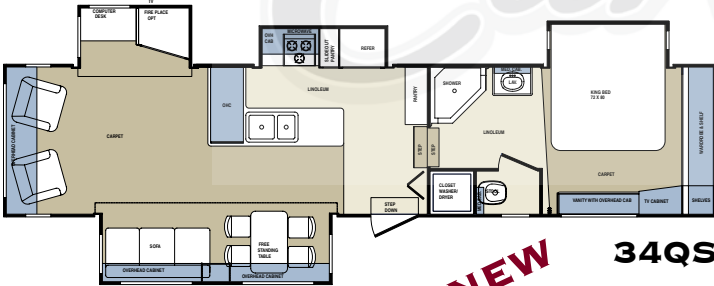
**35CKT**



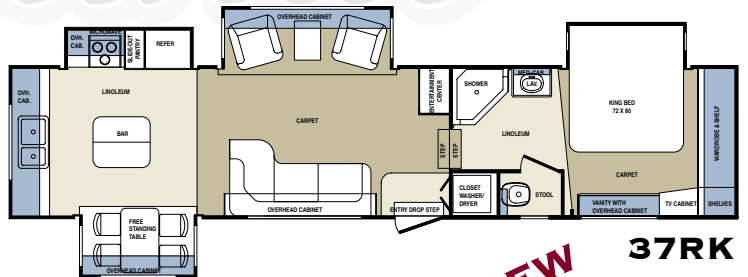
**NEW 33RE**



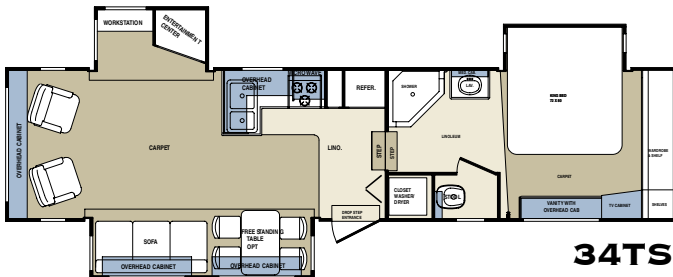
**NEW 36TS**



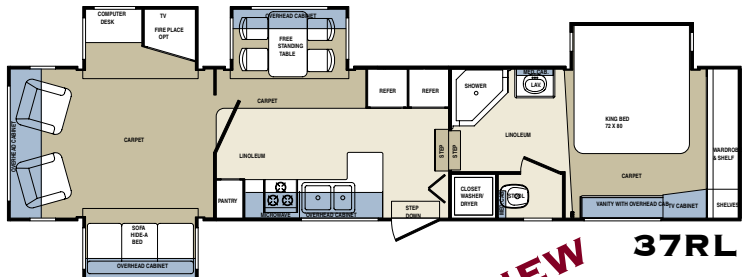
**NEW 34QS**



**NEW 37RK**



**34TS**



**NEW 37RL**

**CARDINAL**



## LUXURY YOU CAN AFFORD

The Cardinal "Limited Edition" gives you the luxury features that you desire and the same quality construction that Cardinal is known for. You get all of this along with an extremely affordable price.



## SPACIOUS PLANS WITH MANY OPTIONS

Featuring a sleek fiberglass front cap, radius roof edges and an extended hitch pin, the all-new Cardinal LE is sure to turn heads. Ranging in size from 29' to 36', each floorplan offers a roomy bedroom slide-out, most with king size beds.

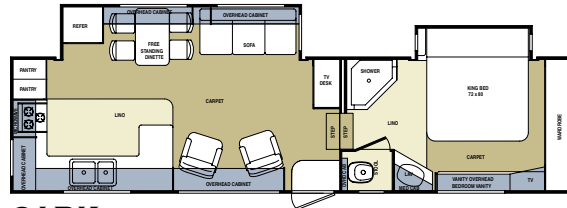
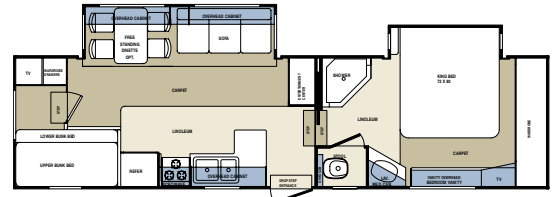
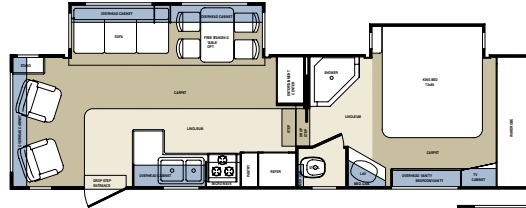
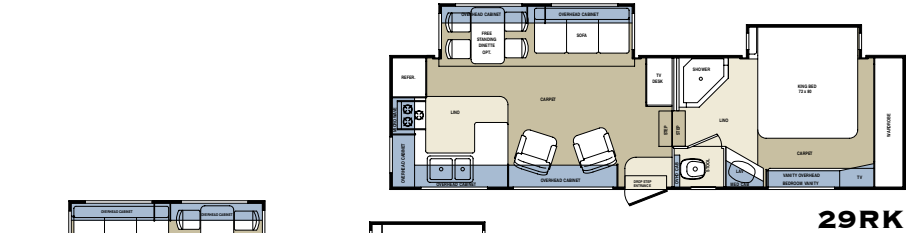
# CARDINAL LIMITED EDITION FLOORPLANS



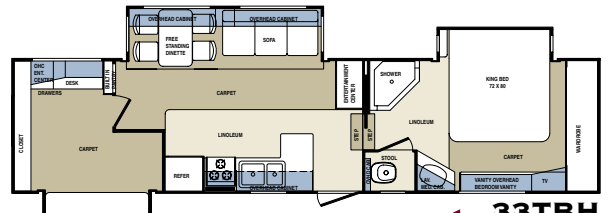
## FEATURES

Quality is the hallmark of every Cardinal, and the LE is no exception. Listed below are just a few of the many quality features that can be found in the Cardinal LE.

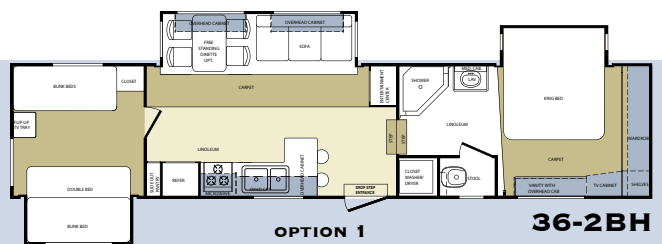
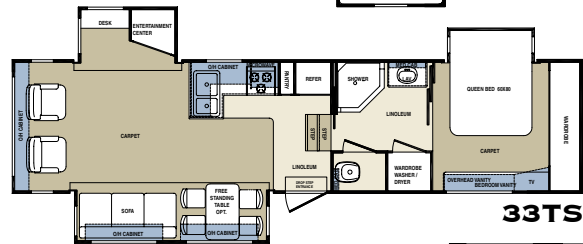
- Solid oak cathedral cabinet doors and drawers
- Oak-edged countertops
- Flush floor slide-outs
- Sleek fiberglass front cap
- Hide-a-bed sofa
- Bedroom slide-outs
- Bright, spacious interiors
- Convenient kitchens
- No step between bath & bedroom
- Plenty of storage space
- Residential style bedding



**NEW**



**NEW**



**OPTION 1**

**NEW**



**CARDINAL LE**



### **CARDINAL TRAVEL TRAILERS**

The all-new Cardinal travel trailer line offers many of the same luxurious interior designs and features of our popular Cardinal Fifth wheels, including raised panel cathedral cabinetry, flush floor slide-outs, oak edged countertops, built in entertainment centers, roomy dinettes and sofas, as well as residential feel bathrooms and bedrooms. Choose from a variety of floorplans ranging in size from 30' to 33', with one sure to fit your family's needs and budget.



### **NEW GRAPHICS AND FRONT CAP DESIGN**

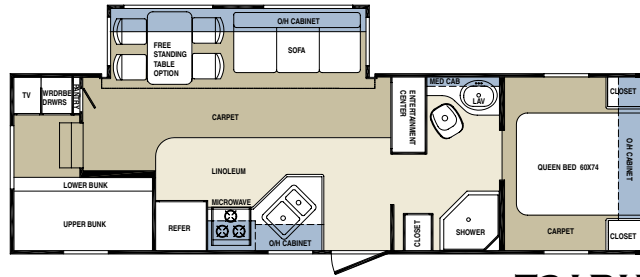
You'll appreciate the newly re-designed, aerodynamic front fiberglass cap, as well as sleek exterior graphics of the Cardinal travel trailer series.

# CARDINAL TRAVEL TRAILER FLOORPLANS

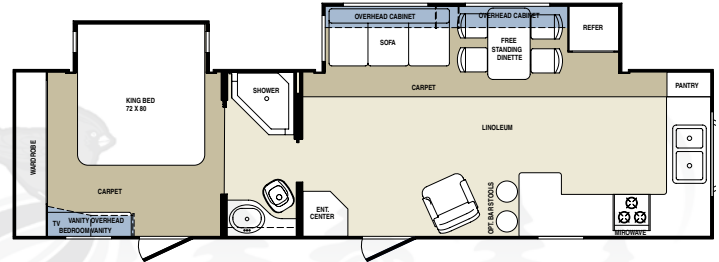
## FEATURES

One of the hallmarks of the Cardinal is quality. Our Travel Trailers are built with the same attention to detail and quality as our Fifth Wheels. Listed below are just a few of the many quality features that can be found in the Cardinal Travel Trailers.

- Solid oak cathedral cabinet doors and drawers
- Built-in entertainment center
- Oak-edged countertops
- Flush floor slide-outs
- New sleek fiberglass front cap
- Hide-a-bed sofa
- Bright, spacious interiors
- Convenient kitchens
- Plenty of storage space
- Residential style bedding

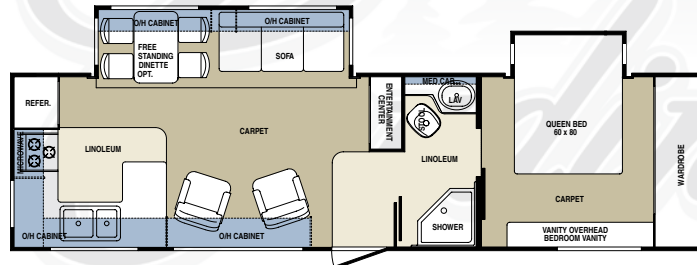


**T31BH**

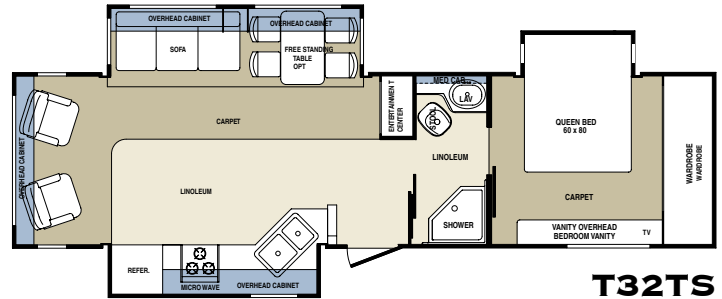


**T32FKR**

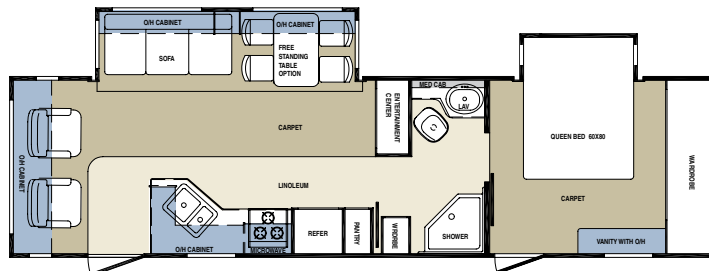
**NEW**



**T31RKT**



**T32TS**



**T33RLB**



## CARDINAL STANDARD FEATURES

### INTERIOR

- High-Back Recliners
- End Table (Most Models)
- Booth Dinette
- Cathedral Raised Panel Cabinet Doors
- Solid Oak Facia for Slide-Outs
- Ceiling Fan
- Day/Night Shades
- Selector Switch for Slide-Outs
- Phone Jacks
- Cable TV Hook-up
- Large Acrylic Kitchen Sink with Single Lever Pull Out Faucet
- Upgrade Drawer Glides
- Light at Entry Door Step
- Directional Reading Lights – Bedroom and Living Room
- Interior Grab Handle
- Oak Edged Countertops
- Knife Rack and Spice Holder
- Deluxe Wall Clock
- Sky View Window/ N/A 34TS
- Sink Cover
- Hide-a-Bed Sofa
- Shelves in Kitchen Overhead Cabinet
- Overhead Cabinet in Main Slide-Out Room
- Pull Out Pantry
- Raised Panel Refer Insert
- Safe
- 5.1 Dolby Stereo w/ DVD and CD Player
- CD Rack
- 110 Outlet in Kitchen Wall

### EXTERIOR

- 16" Spare Tire
- High-Gloss Fiberglass Exterior
- Rubber Roof
- Carpeted, Heated and Lighted Exterior Compartments
- Deluxe Awning
- Roof Ladder
- Dark Tinted Clamp Ring Windows
- Quick Release Pins – Landing Gear
- Cargo Nets
- Attic Vents
- 5200# Axles 30WB
- 6000# Axles 30TS, 34TS
- 7000# Axles 35' and Larger w/ 8 Lug Tires & Aluminum Wheels
- Shock Absorbers
- 16" Tires and Wheels
- Extended Entry Step (Triple)
- Large Endwall Windows in Slide-Out w/ Slider Window
- E-Z Lube Axle
- Electric Front Jacks
- Stabilizer Jacks
- Security Lights (2)
- Fiberglass Front Cap
- Rear Fiberglass Cap
- Extended Hitch Pin
- Folding Assist Handle

### CONSTRUCTION

- Flush Floor Hydraulic Slide-Out
- Welded Aluminum Framed, Laminated Sidewalls (2")
- Block Foam Insulation
- 5" Roof Rafters
- Floor Insulation (R- 18)
- Double Insulation in Roof (R-14)
- Sidewall Insulation (R-8)
- 5/8" Tongue and Groove Plywood Floor (Screwed)
- 3/8" Roof Decking (Screwed)

### BEDROOM/BATHROOM

- Innerspring Mattress w/ Ultra Deluxe Bedspread, Pillow and Headboard
- Bed Lifter
- 2nd TV Outlet & Shelf
- Shoe Rack
- Queen Bed 60"x80", King Bed 72"x80" (Depending on Model)
- Porcelain Stool
- Marble Look Shower, Tub and Sink
- Cosmetic Light
- Bath Window
- Fantastic Fan (Bathroom)
- Extra Large Bath Sink w/ Single Lever Faucet
- Glass Shower Door
- Vinyl Floor
- Bath Sky Dome
- Laundry Chute

### APPLIANCES/SYSTEMS

- 13.5 BTU Ducted A/C with QuickCool
- 3- Burner Hi-Output Range w/ 22" Oven w/ Range Cover
- Microwave – 22" OTR
- 6 Gal. Gas/Elect. DSI Water Heater
- Large Double Refer (8') w/ Adjustable Temp. Control
- TV Antenna w/ Booster
- Water Heater Bypass
- Heated and Enclosed Holding Tanks
- LP Leak Detector
- 52 Gal. Fresh Water Tank
- Black Tank Flush
- 120-Gallon Waste Tanks (40 Gal. Each)
- Water Purifier
- 35M BTU Furnace
- 27" Color TV
- Quick Winterization Kit
- Monitor Panel
- Command Center for Systems Controls
- 50 AMP Service

## CARDINAL OPTIONS

### INTERIOR

- Free Standing Dinette Table w/ Pull Out Extension and 4 Chairs
- Extra Chair For Computer Desk
- Coffee Maker
- Fireplace (N/A 30TS, 36TS)
- Aurora China Toilet
- Coffee Table
- Fantastic Fan w/ Rain Sensor
- Central Vacuum System
- Pillow Top Mattress
- Garden Tub IPO Neo-Angle Shower
- Euro Recliners w/ Ottoman
- Wood Grain Plank Flooring
- Solid Surface Edge Counter Tops
- Countertop Extension
- Extenda Countertop (34TS only)

### APPLIANCES/SYSTEMS

- 8' Refer w/ Icemaker (N/A in Refer. Slides)
- 10' Refer
- 10' Refer w/ Icemaker (N/A in Refer. Slides)
- 12' Side-by-Side Refer. w/ Icemaker and Flat Panel (34TS, 36TS, 36FL and 36RL)
- 15K BTU Ducted A/C w/ Solar Panel
- Generator Prep (HR. Meter, Start Switch, Transfer Box)
- 5.5 KW Onan Generator (LP)
- Stack Washer/Dryer
- Wire & Frame for 2nd A/C
- 2nd A/C (13.5BTU) in Bedroom
- 2nd Furnace (20K Btu-35 & Larger) Non-ducted
- Satellite Prep (RG6-Roof or Side Mount)
- 10 Gal. Gas/Elect. DSI Water Heater

### EXTERIOR

- 16" Aluminum Wheels (30TS, 33RE, 34TS)
- Battery
- 2-Step Awning (w/ Wrap)
- 9000 A&E Awning (w/ Wrap)
- Electric Awning w/ Remote
- Center Awning Support
- Electric Stabilizer Jacks
- Outside Shower
- Trail Air Pin Box
- Trail Air Suspension
- Safety Glass
- Thermo-Pane Windows (Safety Glass)
- 12V Battery Disconnect
- Gel-Coat Fiberglass Exterior
- Aluminum Roof Trusses
- Slide-Out Awnings
- Steel Slide-Out Storage Tray
- Custom Paint
- Boat Hitch
- Satellite Prep (Roof Mount or Side Mount)
- Hydraulic Front Jacks



**CARDINAL**



## CARDINAL LE STANDARD FEATURES

### INTERIOR

- High-Back Recliners
- Booth Dinette
- Cathedral Raised Panel Cabinet Doors
- End Table (Most Models)
- Upgrade Drawer Glides
- 3-Burner Hi-Output Range w/ 22" Oven
- Light at Entry Door Step
- Hide-a-Bed Sofa
- Overhead Cabinet in Main Slide-Out Room
- 6+2 Stereo Sound System w/ CD
- Deluxe Wall Clock
- Oak Accents on Slide-Outs
- Cable TV Hook-ups
- Ceiling Fan
- Phone Jacks
- Sky View Window N/A 33TS
- Day/Night Shades
- 110 Outlet in Kitchen Wall
- Knife and Spice Rack
- Sink Cover

### EXTERIOR

- 16" Spare Tire
- High-Gloss Fiberglass Exterior
- Rubber Roof
- Deluxe Awning
- Dark Tinted Clamp Ring Windows
- Radius Entry Door
- Shock Absorbers
- 16" Tires & Wheels
- Extended Entry Step (Triple)
- Large Endwall Windows in Slide-Out w/Slider Window
- E-Z Lube Axle
- Fiberglass Front Cap
- Folding Assist Handle
- Security Lights (2)
- Electric Front Jacks
- Roof Ladder
- Raised Panel Refer Insert
- Stabilizer Jacks
- Quick Release Pins on Landing Gear
- Attic Vents
- 5200# Axles (29RK, 30WB, 31-2BH)
- 6000# Axles (33TS)
- 7000# Axles with 8 Lug Wheels and Aluminum Rims (36-2BH)
- Carpeted, Heated and Lighted Storage Compartments
- Extended Hitch Pin

### CONSTRUCTION

- Flush Floor Hydraulic Slide-Out w/ Laminated Walls and Ceiling
- Welded Aluminum Framed, Laminated Sidewalls (2")
- Block Foam Insulation
- 5" Roof Rafters
- Floor Insulation (R-11) (R- 18 w/ Heated Enclosed Tanks)
- Double Insulated in Roof (R-14)
- Sidewall Insulation (R-8)
- 5/8" Tongue and Groove Plywood Floor (Screwed)
- 3/8" Roof Decking (Screwed)

### BEDROOM/BATHROOM

- Innerspring Mattress w/Ultra Deluxe, Bedspread, Pillows and Headboard
- Queen Bed 60"x80, King Bed 72" x 80" (Depending on Model)
- Bed Lifter
- 2nd T.V. Outlet and Shelf
- Porcelain Stool w/ Foot Flush
- Bath Window
- Single Lever Faucet
- Glass Shower Door
- Vinyl Floor in Stool Area
- Bath Sky Dome
- Laundry Chute
- Fantastic Fan (Bathroom)

### APPLIANCES/SYSTEMS

- 13.5 BTU Ducted A/C with QuickCool
- Microwave – 22" OTR
- 6 Gal. Gas/Elect. DSI Water Heater
- Double Door Refer (8') w/ Adjustable Temp. Control
- TV Antenna w/ Booster
- Water Heater Bypass
- LP Leak Detector
- 52 Gal. Fresh Water Tank
- Water Purifier
- 35M BTU Furnace
- Monitor Panel
- Command Center for Systems Controls
- Selector Switch for Slide-Outs (33TBH, 33TS, 36-2BH)
- Single Lever Kitchen Faucet w/ Pull Out Sprayer
- Folding Range Cover
- Black Tank Flush
- 50 AMP Service
- Quick Winterization Kit
- Heated and Enclosed Holding Tanks

## CARDINAL LE OPTIONS

### INTERIOR

- Free Standing Dinette Table w/4 Chairs
- Coffee Maker
- Aurora China Toilet w/Sprayer
- Coffee Table
- Garden Tub IPO Neo-Angle Shower
- Fantastic Fan w/ Rain Sensor
- Central Vacuum System
- Euro Recliners w/ Ottoman
- Wood Grain Plank Floor
- Pillow Top Mattress
- Privacy Doors in Bedroom (33TS only)
- Flip-Down Computer Desk (N/A 33TS)
- Solid Surface Edge Countertops
- Pull-Out Pantry (N/A 29RK, 312BH, 33TBH)
- Fireplace (33TS only)
- Slide-Out Oak Facia
- Marbelized Shower and Bath Sink
- Queen Bed IPO King
- Soft Touch Ceiling
- Countertop Extension
- Extenda Countertop (33TS only)

### APPLIANCES/SYSTEMS

- 8' Refer w/Ice Maker
- 10' Refer
- 10' Refer w/Icemaker
- 15K Btu Ducted A/C w/Solar Panel
- Heat Strip for A/C
- Generator Prep (HR. Meter, Start Switch, Transfer Box only)
- 5.5 KW Onan Generator (LP)
- Stack Washer/Dryer (36-2BH & 33TS)
- Wire & Frame for 2nd A/C
- 2nd 13,500BTU-A/C
- Satellite Prep (RG6-Roof or Side Mount)
- 10 Gal. Gas/Elect. DSI Water Heater
- 27" Color TV
- 5.1 Dolby Stereo w/DVD and CD Player
- Convection Microwave w/Cook top
- Selector Switch for Slide-Outs (29RK, 30WB, 312BH, 31RK)
- Second Furnace (20KBTU) Mandatory Option 36-2BH onl

### EXTERIOR

- 16" Aluminum Wheels (STD 36-2BH)
- Battery
- 2-Step Awning (w/Wrap)
- 9000 A&E Awning (w/Wrap)
- Electric Awning w/Remote
- Center Awning Support
- Electric Stabilizer Jacks
- Outside Shower
- Trail Air Pin Box
- Trail Air Suspension
- Safety Glass
- Thermo-Pane Windows (Safety Glass)
- 12V Battery Disconnect
- Aluminum Roof Trusses
- Slide-Out Awnings
- Boat Hitch
- Satellite Prep (Roof Mount or Side Mount)
- Gel Coat Fiberglass
- Hydraulic Front Jacks

CARDINAL LE



## TRAVEL TRAILER STANDARD FEATURES

### INTERIOR

- High-Back Recliners
- Booth Dinette
- Day/Night Shades
- Phone Jacks
- Cable TV Hook-up
- End Table (31RKT, 32TS)
- Oak Edged Countertops
- Hide-a-Bed Sofa
- Deluxe Wall Clock
- Oak Accents on Slide-Outs
- Cathedral Raised Panel Cabinet Door
- Upgrade Drawer Glides
- 3 – Burner Hi-Output Range w/ 22" Oven
- Light at Entry Door Step
- Overhead Cabinet in Main Slide-Out Room
- 6+2 Stereo Sound System w/ CD
- Cable TV Hook-Ups
- Phone Jacks
- 110 Outlet in Kitchen Wall
- Knife and Spice Rack
- Sink Cover
- Raised Panel Refer Insert

### EXTERIOR

- Deluxe Awning
- Dark Tinted Clamp Ring Windows
- Fiberglass Front Cap
- Front Stone Guard/Awning (if applicable)
- LP Bottle Cover
- Heated and Enclosed Holding Tanks
- Extra-Wide 30" Entry Door (Most Models)
- Radius Roof Edges
- High-Glossed Fiberglass Exterior
- Rubber Roof
- Radius Entry Door
- Triple Entry Step
- Large Endwall Windows in Slide-Out w/ Slider Window
- Folding Assist Handle
- Security Lights
- Attic Vents
- Stabilizer Jacks (4)

### CONSTRUCTION

- Flush Floor Hydraulic Side-Out w/Laminated Walls & Roof
- Welded Aluminum Framed, Laminated Side Walls (2")
- Welded Aluminum Framed Roof & Floor
- Block Foam Insulation
- 5" Roof Rafters
- Floor Insulation (R-11) (R-18 w/ Heated Enclosed Tanks)
- Double Insulated in Roof (R-14)
- Sidewall Insulation (R-8)
- 5/8" Tongue and Groove Plywood Floor (Screwed)
- 3/8" Roof Decking (Screwed)

### BEDROOM/BATHROOM

- Innerspring Mattress w/ Ultra Deluxe Bedspread, Pillows and Headboard
- Super Storage Under Bed (Non Slides)
- Bed Lifter
- 2nd T.V. Outlet and Shelf
- Porcelain Stool w/ Foot Flush
- ABS Shower w/ ABS Surround
- Glass Shower Door
- Single Lever Faucet
- Fantastic Fan (Bathroom)
- Vinyl Floor in Stool Area

### APPLIANCES/SYSTEMS

- 13.5 BTU A/C w/ QuickCool
- 3-Burner Hi-Output Range (22")
- Microwave 22" OTR
- 6 Gal. Gas/Elect. DSI Water Heater
- Double Door Refer (8' w/ Adjustable Temp. Control)
- TV Antenna w/ Booster
- Water Heater Bypass
- 35M BTU Furnace
- Single Lever Kitchen Faucet w/ Pull Out Sprayer
- Black Tank Flush
- 50 AMP Service
- Command Center for Systems Control
- LP Leak Detector
- Water Purifier
- Monitor Panel
- Folding Range Cover
- Black Flush Tank
- Quick Winterization Kit

## TRAVEL TRAILER OPTIONS

### INTERIOR

- Euro Recliners w/ Ottoman
- Free Standing Dinette Table w/ Pull Out Extension and 4 Chairs
- Pillow Top Mattress
- 8' Refer w/ Ice Maker
- 10' Refer
- 10' Refer w/ Ice Maker
- Garden Tub
- Coffee Maker
- Aurora China Toilet
- 15K BTU A/C w/ Solar Panel
- Solid Surface Edged Countertops
- Wood Grain Plank Flooring
- 5.1 Dolby Stereo w/ DVD & CD Player
- Convection Microwave w/ Cook Top
- Marbelized Shower & Bath Sink
- Heat Strip for A/C
- Slide-Out Oak Facia

### EXTERIOR

- Front Power Jacks
- 15" Spare Tire
- 16" Tires
- 16" Spare Tire
- 16" Aluminum Wheels
- Outside Shower
- 12V Battery Disconnect
- Shock Absorbers
- Slide – Out Awnings
- Roof Ladder
- Center Awning Support
- Battery
- Thermopane Windows (Safety Glass)
- Trail Air Suspension
- Satellite Prep (Roof Mount or Side Mount)
- Safety Glass
- Gel Coat Fiberglass



**TRAVEL TRAILERS**

## SPECIFICATIONS: CARDINAL

Models	30TS	33RE	34TS	34QS	35CKT	36TS	37RL	37RK
UVW - Unloaded Vehicle Weight (approx.)	9655	11160	11380	12340	10840	11920	12470	12770
Hitch Weight (lbs.) (approx.)	2080	2000	2410	1970	2120	1850	2390	2410
GAWR - Gross Axle Weight Rating	12000	12000	12000	14000	14000	14000	14000	14000
GVWR - Gross Vehicle Weight Rating (approx.)	14080	14000	14410	15500	15500	15500	15500	15500
CC - Carrying Capacity (approx.)	3866	2281	2471	2601	4101	3021	2471	2171
Exterior Length	32'-6"	36'-6"	37'	37'6"	36'-8"	39'-7"	39'-6"	39'-6"
Exterior Overall Height w/AC	12'-8"	12'-8"	12'-8"	12'-8"	12'-8"	12'-8"	12'-8"	12'-8"
Interior Height - Bedroom	78"	78"	78"	78"	78"	78"	78"	78"
Brake Size	12"	12"	12"	12"	12"	12"	12"	12"
Tire Size	ST235/ 80R16LRE	ST235/ 80R16LRE	ST235/ 80R16RE	ST235/ 85R16G/ 8H ALUM	ST235/ 85R16G/ 8H ALUM	ST235/ 85R16G/ 8H ALUM	ST235/ 85R16G/ 8H ALUM	ST235/ 85R16G/ 8H ALUM
Fresh Water (gallons)	54	54	54	54	54	54	54	54
Waste Water Holding Tanks (gal.) 3@40 gal. ea.	120	120	120	120	120	120	120	120

Model number of any particular unit does not necessarily reflect the overall length of the unit itself. Dry weight are estimates.

\*\*\* Not available at time of printing.

## SPECIFICATIONS: LE 5TH WHEEL

Models	29RK	30WB	31RK	312BH	33TSLE	33TBH	36-2BH
UVW - (lbs. - approx.)	9730	9630	10540	9830	10570	11000	11930
Hitch Weight (lbs. - approx.)	1790	2070	1980	2010	2130	1990	2050
GAWR - (lbs.)	10160	10160	10160	10160	12000	12000	14000
GVWR - (lbs.)	11950	12230	12380	12170	14130	13990	15500
CC - Carrying Capacity (approx.)	1661	2041	1581	1781	3001	2431	3011
Exterior Length	33'-3"	32'-6"	33'11"	33'0"	36'-2"	36'5"	40'-8"
Exterior Overall Height w/AC	12'-8"	12'-8"	12'-8"	12'8"	12'-8"	12'-8"	12'-8"
Interior Height - Bedroom	78"	78"	78"	78"	78"	78"	78"
Brake Size	12"	12"	12"	12"	12"	12"	12"
Tire Size - ST235/80R16RLE	S	S	S	S	S	S	ST235/ 85R16G/ 8H ALUM
Fresh Water (gal.)	54	54	54	54	54	54	54
Waste Water Holding Tanks (gal.) 3@40 gal. ea.	120	120	120	120	120	120	120

Model number of any particular unit does not necessarily reflect the overall length of the unit itself. Dry weight are estimates.

\*\*\* Not available at time of printing.

## SPECIFICATIONS: TRAVEL TRAILER

Models	31BH	31RKT	32FKR	32TS	33RLB
UVW - (lbs. - approx.)	7320	8680	10300	9270	7885
Hitch Weight (lbs. - approx.)	780	1380	1330	1130	990
GAWR - (lbs.)	10160	10160	12000	12000	10160
GVWR - (lbs.)	10940	11540	13430	13130	11150
CC - Carrying Capacity (approx.)	3178	2418	2688	3041	2823
Exterior Length	33'-1"	31'-10"	34'2"	35'-2"	35'-1"
Exterior Overall Height w/AC	11'-2"	11'-2"	11'2"	11'-2"	11'-2"
Interior Height - Bedroom	78"	78"	78"	78"	78"
Brake Size	12"	12"	12"	12"	12"
Tire Size - ST225/75R15	S	S	S	S	S
Fresh Water (gal.)	41	41	41	41	41
Waste Water Holding Tanks (gal.) 3@40 gal. ea.	120	120	120	120	120

Model number of any particular unit does not necessarily reflect the overall length of the unit itself. Dry weight are estimates.

\*\*\* Not available at time of printing.



**YOUR CARDINAL DEALER**



Forest River, Inc. 58277 St. Rd. 19 Elkhart, IN 46517  
574.296.7700 [www.forestriverinc.com](http://www.forestriverinc.com) [www.forestriveraccessories.com](http://www.forestriveraccessories.com)

All specifications contained herein are based on the latest product information at time of printing. Forest River reserves the right to make changes in colors, materials, equipment and specifications at any time without notice and assumes no responsibility for any errors in this brochure.