

20
IMPERIAL™
06



HOLIDAY RAMBLER®

This is Living®





IF YOU SEE YOUR REFLECTION, THIS COACH IS FOR YOU.

The 2006 Imperial — it isn't designed for ordinary tastes. It's designed for those with a deep appreciation for power. For those who admire the precision performance and impeccable ride and handling that only a Roadmaster chassis can deliver. And for those who recognize that luxurious comforts and high technologies exist solely to serve up better experiences. This is an extraordinary motorcoach for extraordinary people. Like you.

THIS STAR LOOKS TALLER IN PERSON.

Step inside the Imperial, and you'll immediately notice the difference made by a full seven feet of ceiling height. It's a luxury of space that enhances the comfort of every feature and the versatility of every floorplan. You'll also be impressed by the warmth and craftsmanship of the woodwork, with raised panel doors, crown molding and decorative hardwood slide-out fascia. Look around. From the designer carpeting and ceramic tile floors to the polished brass hardware and decorative lighting, you have all the elements of an exquisite home.

A) The bedroom greets you with roomy comfort and beautiful styling. A queen bed with pillow top mattress is standard, or you're welcome to pamper yourself with the optional king bed. Tucked neatly in the overhead cabinets is a 20" flatscreen TV, or the optional 20" LCD TV, as well as a DVD player.



WHEN IT COMES TO STYLE, WE'RE SETTING THE CURVE.

The Imperial's kitchen is highlighted by the irresistible appeal of the rounded Corian® countertop with an integrated sink and glass splash guard. The large four-door refrigerator with ice maker and raised panel doors blends seamlessly with the cabinets, and the microwave/convection oven offers many versatile cooking methods. To keep things in order, you'll find built-in storage for the sink and cooktop covers, a silverware drawer organizer and wastebasket storage under the sink.



- A) You'll have plenty of elbow room in the brightly lit bathroom. A one-piece shower comes standard, or you have the option of a bathtub. The vanity offers plenty of storage space and features an attractive Corian® countertop and integrated sink.
- B) Nothing compares to the convenience of our legless Corian® dinette table. The two stylish chairs beautifully complement the decor, and the seating expands to four with the addition of two folding chairs.





TAKE THE REINS OF 400 STATE-OF-THE-ART HORSES.

You'll be firmly in control of the Imperial's impressive power, thanks to the cockpit's thoughtful organization and the wide array of advanced technologies. The color monitor to the right of the instrumentation panel serves both the rear vision system with audio and the Aladdin™ video coach system — helping you track vital engine and coach functions. Optional features to consider include a GPS navigational system and Sirius satellite radio, with its wide range of music, sports and news.



1-PIECE WINDSHIELD

You'll have the largest, and safest, unobstructed view in the industry, thanks to our exclusive Panaview™ 1-piece windshield. Slender side pillars increase your peripheral vision and the wipers are conveniently mounted below your line of sight. The exterior mirrors with turn signals are also mounted on the front cap — so you don't have to turn your head away from the road. Inside the cockpit, power sunvisors and pull-down sunshades eliminate dangerous glare.





- A) The attractive canyon burlwood instrumentation panel features large, easy-to-read gauges, and you'll love the feel of the lighted VIP Smartwheel® that includes the controls for the wipers, ICC and cruise control.
- B) To expand your view behind the coach, you may upgrade to the optional three-camera rear vision system with audio and adjustable center camera.
- C) Our side-hinged baggage doors with power locks are simple to use, making it easier to reach your belongings and giving you a better view of what's inside the compartments. Thanks to the truss system of the Roadmaster chassis, there's plenty of storage space including large pass-through compartments that are perfect for sports equipment and larger items. The optional slide-out tray shown here makes loading and unloading a snap.

AN IDEA SO SIMPLE, IT'S AHEAD OF ITS TIME.

Holiday Rambler is proud to be among the first to offer sophisticated Multiplex wiring. This state-of-the-art system utilizes computer technology to streamline the wiring and connect many of the coach's electronic features. This illustration explains how it works, but all you really need to know is that you're going to love the convenience.



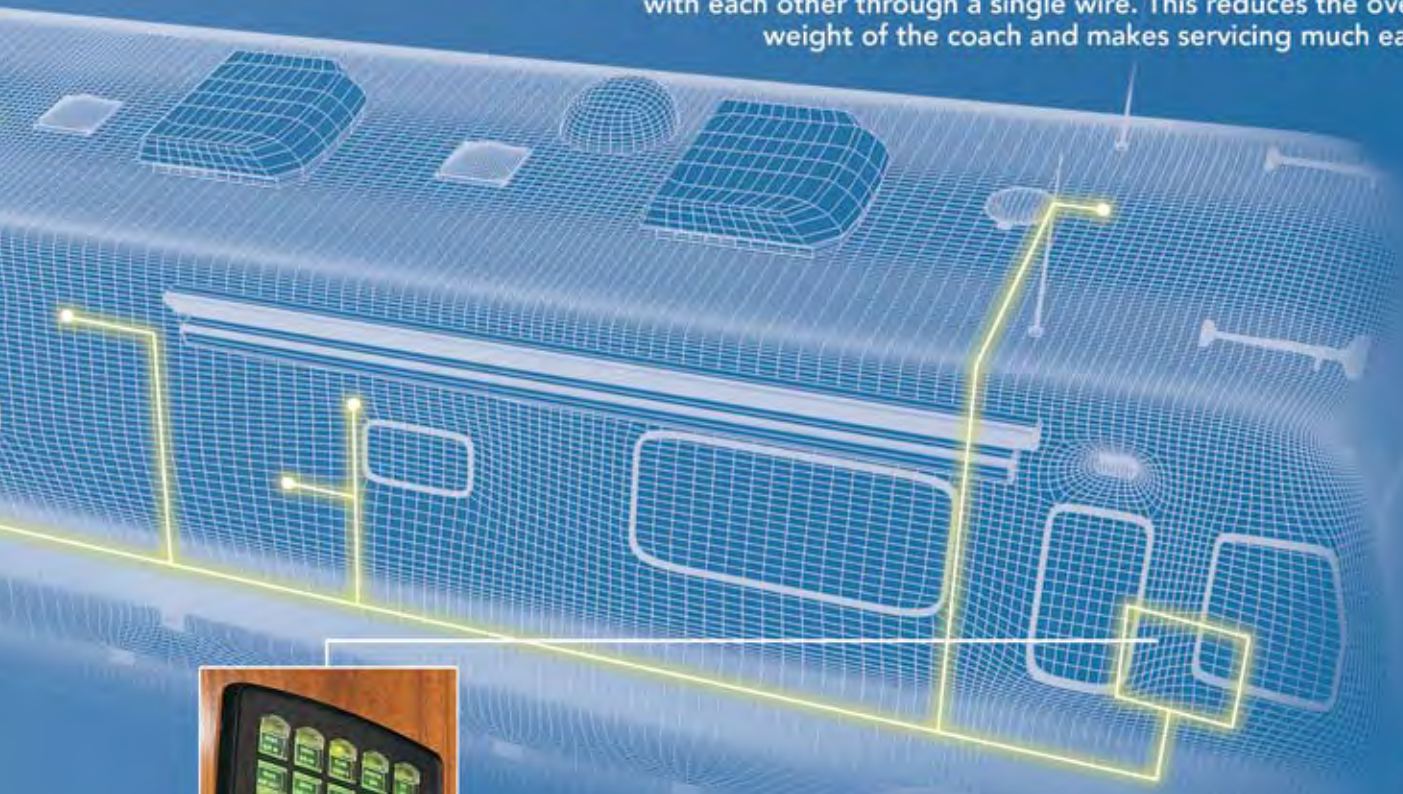
INTELL-I-SWITCH
Innovating Convenience.

- A) One impressive option to consider is the Aqua-Hot® system. It provides a continuous on-demand supply of hot water and also serves as a zoned interior hot-water heating system. It even features an engine preheat function.
- B) The Onan® 8.0 kW Quiet Diesel generator with auxiliary start (10.0 kW on the 40PDQ) is accessed through the front cap on a power slide-out tray, making it easy to reach and service.



A

Bundles of wiring are replaced by separate modules that communicate with each other through a single wire. This reduces the overall weight of the coach and makes servicing much easier.



Lighted switch panels, like the one shown here, are located throughout the coach, giving you multiple convenient access points for the controls to the slide-outs, lighting and more. Each switch illuminates to indicate which function is on or off.

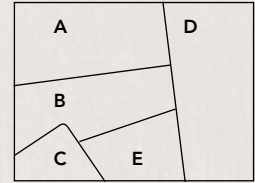
B



WHERE ALL THE DETAILS COME TOGETHER.

Holiday Rambler has long set the standard with warm, inviting interiors that feature a perfect harmony of fabrics, accents and carpeting. We've also led the way with stunning woodwork and superb craftsmanship, including raised panel cabinet doors, lined shelves and heavy-duty ball bearing guides. Select the combination that suits you best to customize your Imperial and make it distinctively your own.

- A. BEDSPREAD
- B. SOFA
- C. CORIAN®
- D. ACCENT
- E. CARPET



EXTERIOR COLORS/WOODS/FABRICS



EMERALD ISLE



REDWOOD CANYON



IMPERIAL HARDWARE

Our elegant cabinet hardware design features a polished brass finish.



Manufactured in, not added on. For added protection against stains, soil repellent is applied to virtually all upholstery fabric during the finishing process for superior coverage.*

*Brand and application of upholstery fabric protection may vary depending on date recreational vehicle was manufactured.



STAINED OAK



NATURAL OAK



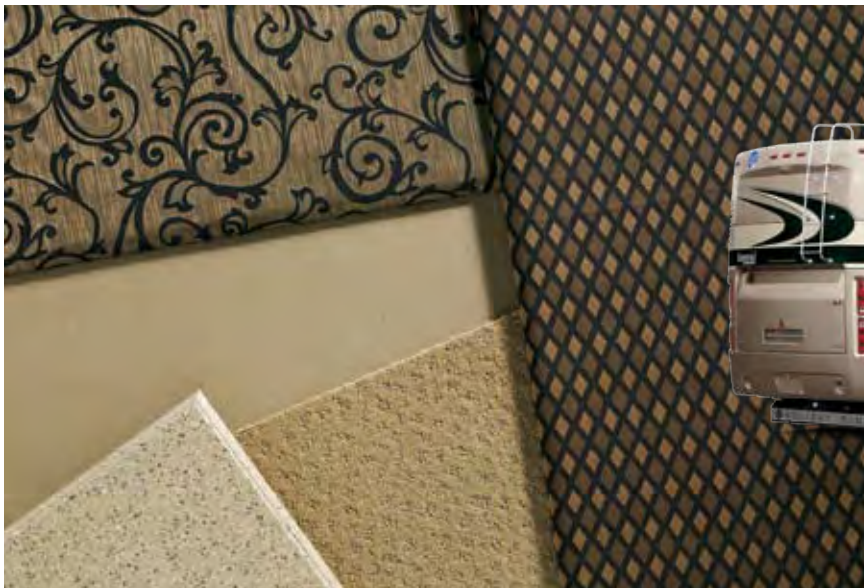
STAINED CHERRY



NATURAL CHERRY



NATURAL MAPLE



SILVER MINK



EXTERIOR COLORS/WOODS/FABRICS



INCA GOLD



ROADMASTER S-SERIES CHASSIS

At the heart of the 2006 Imperial is the incomparable Roadmaster S-Series Semi-Monocoque chassis. Designed for luxury motorcoaches and custom-built to the exact specifications of each floorplan, this chassis delivers the most sophisticated features and very best performance in the industry. We invite you to take a few minutes and discover all the ways it leads the pack in safety, reliability, comfort and convenience.



For less vibration and smoother shifting, a unique rear axle tilt and three-point engine mounting system perfectly aligns the entire drive train.

A 10,000 lb. hitch with 7/4-way trailer plug offers powerful towing capacity.

The side-mounted aluminum radiator and intercooler reduce weight, are rust-resistant and deliver better heat transfer than steel cooling components.

The cooling system exceeds all manufacturer requirements, while two fuel filters help ensure that the injectors remain clear and operate at peak performance.

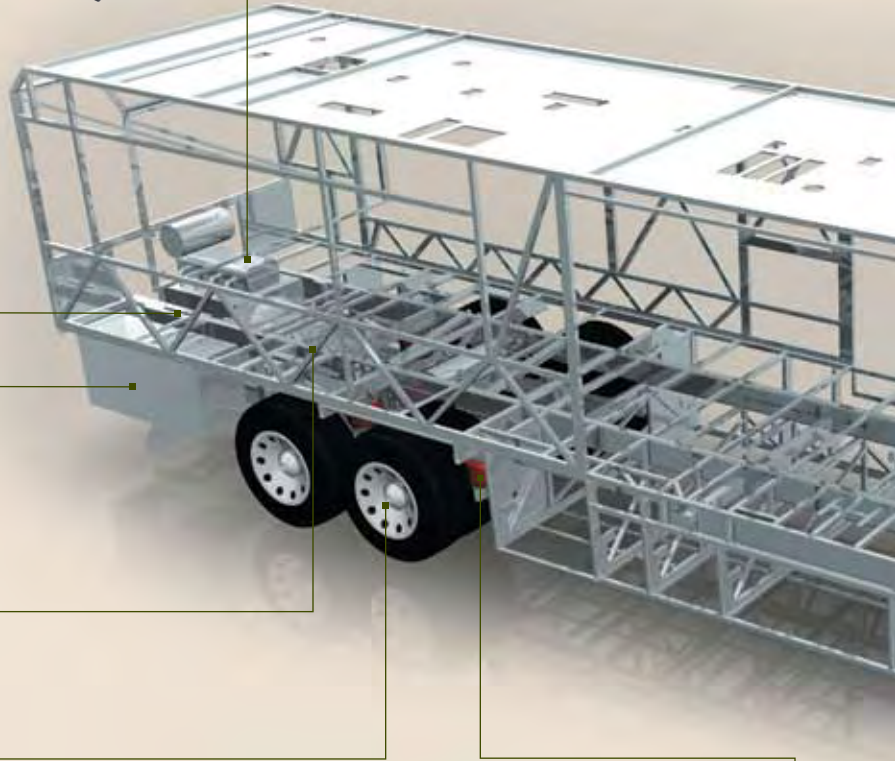
Semi-Monocoque Design – Trussed superstructure distributes stress evenly throughout the entire chassis and adds strength to the sidewalls and bays. Rails are spaced 44" on center for a wider stance and unmatched strength.

A two-stage Jacobs engine brake, auto-slack adjusters, and the anti-lock braking system (ABS) with front disc and rear drum brakes all combine to give you superior stopping power—especially on steep grades. Automatic traction control (ATC) eliminates wheel slippage in slick conditions and heightens control.



Cummins® ISL 400 Electronic Engine:

You'll enjoy the peerless performance of the Cummins® ISL 400 HP diesel engine and Allison® 3000 MH 6-speed World Transmission with electronic shifter. Our exclusive use of synthetic transmission fluid allows for up to three-year maintenance intervals for the Allison® transmission.

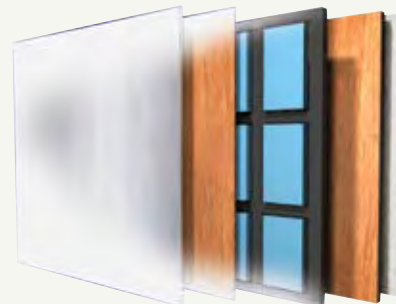


The Cushion Air-Glide suspension positions 10 Bilstein® shocks and 10 air bags, 8 of which are outboard mounted with auto leveling for greater stability, a smoother ride and the best handling in its class. The air bags are placed approximately 7-1/2 feet apart, providing a wider and more stable platform. The active suspension automatically adjusts the pressure of the air bags as you drive and virtually eliminates nose-diving and the side-to-side body sway associated with high wind conditions, curvy roads and emergency maneuvers.

LAMINATED GEL COAT

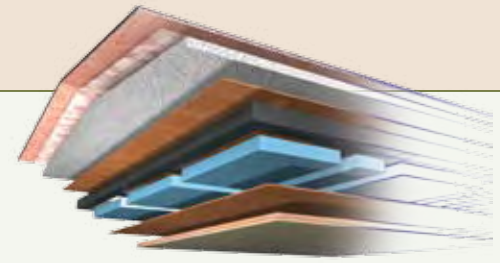
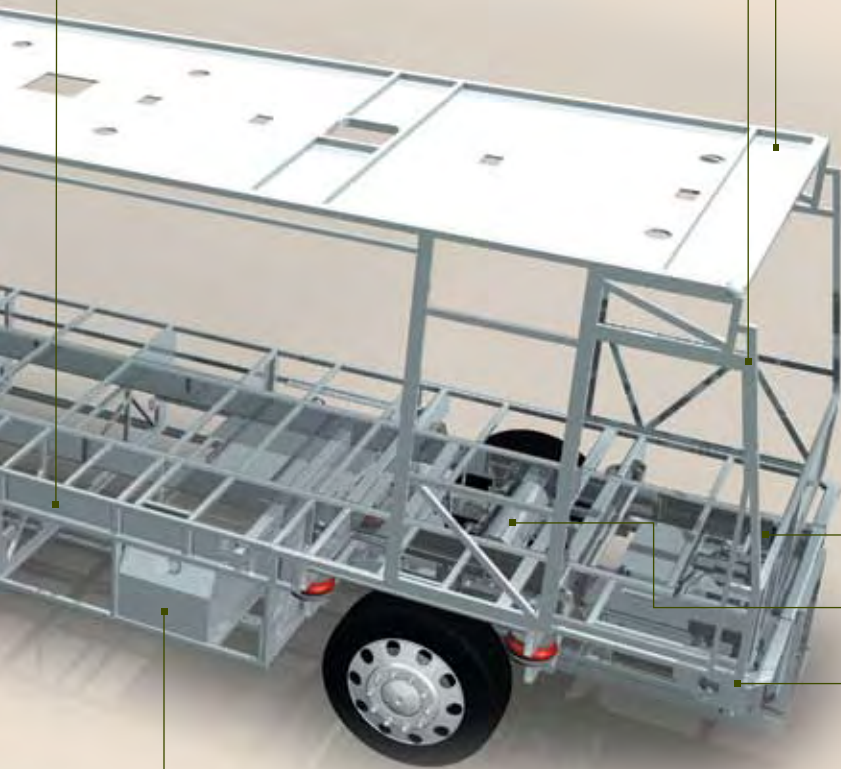
SIDEWALL CONSTRUCTION: (left to right)

- Gel coat fiberglass outer wall
- Luaun paneling
- R 7.5 closed cel foam seals every nook and crevice
- Heavy-gauge tubular steel and 4" steel plate backers
- Luaun paneling; walls are Vac-U-Bonded together
- Decorative wall coverings



The heavy-duty steel superstructure is the strongest you'll find anywhere, with a 3" x 8" x 1/4" frame rail and a steel rating of 60,000 PSI.

Steel Cage Firewall for extra protection



ALL SEASON FOAM INSULATED

ROOF CONSTRUCTION: (top to bottom)

- One-piece 1/4" thick fiberglass roof, crowned for water runoff and seamlessly joined with front and rear end caps; non-skid walkways on outboard areas for added convenience
- Vapor barrier
- 3 1/2" tapered bead foam supports the crowned roof; the center tunnel houses wiring and air conditioner ducts
- 1/4" marine grade plywood sheeting
- Tubular steel framework
- R 7.5 closed cel foam seals every nook and crevice
- Luaun and vinyl paneling are Vac-U-Bonded
- Sound-absorbing, easy-to-clean padded vinyl interior headliner

The brake and accelerator pedals adjust at the touch of a button, for enhanced ergonomics and greater comfort.

Dual Ping Tanks with 3/4" air lines for quicker response and improved ride and handling.

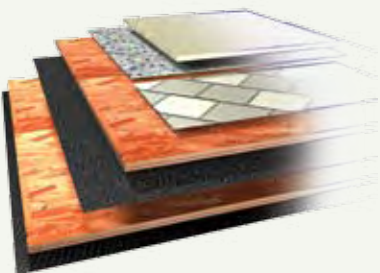
The power steering box provides a 50-degree front wheel turn angle in both directions and returns the steering wheel back to its center position.

Dual fuel fill allows you to fill the tank from either side of the coach, for greater convenience and flexibility at the pump.

5-LAYER FLOOR CONSTRUCTION:

(top to bottom)

- Tile, or 1/2" carpet pad and carpeting
- Dyna-Span Flooring
- Decibel paper
- Dyna-Span Flooring
- Waterproof Darco underbelly



BODY CONSTRUCTION: FEATURES		OPTIONS
<ul style="list-style-type: none"> • Heavy-Duty Steel Superstructure with Steel Cage Cockpit Construction • Seamless One-Piece Molded Crowned Fiberglass Roof • All-Season Foam Insulated Roof • Laminated Gel Coat Fiberglass Sidewalls • Five-Layer Flooring with Two Layers of OSB Flooring • Deluxe Full-Body Paint • Panaview™ 1-Piece Windshield • Dual Head Power Controlled Heated Exterior Mirrors with Turn Indicator Lights • Halogen Fog Lights • Daytime Running Lights 	<ul style="list-style-type: none"> • Recessed Side Docking Lights • Roof-Mounted Dual Trumpet Air Horns • Entry Step Storage • Insulated Aluminum Baggage Doors with Power Locks • Lined Pass-Through Storage Compartments • Interlocking Aluminum Framed Slide-Out Houses • Interior Paneling with 1 1/2" Insulation • Side-Hinged Baggage Doors with Electric Locks • Rear Ladder • Full-Length Holiday Rambler Mud Flap • Electric Bay Door Latches 	<ul style="list-style-type: none"> • 3M Film Front Mask • Storage Bay Slide-Out Tray, One Side • Storage Bay Slide-Out Tray, Pass-Through • Exterior Sunscreens
CHASSIS/ENGINE/SUSPENSION: FEATURES		OPTIONS
<ul style="list-style-type: none"> • Roadmaster S-Series Semi-Monocoque Chassis • Cummins® ISL 400 HP Electronic Engine (with Fuel Injection) with Allison® 3000 MH 6-Speed World Transmission and Electronic Shifter • Torque: 1,200 lbs./ft. Max. Net @ 1,300 RPM • Engine Displacement: 8.8L/538 Cu. In. • Dual Fuel Fill • 200 Amp Alternator • Rear Axle Ratio: 4.78:1 • Tires: 295/80R/22.5 • Remote Transmission Fill • Polished Aluminum Wheels 	<ul style="list-style-type: none"> • Full-Cushion Air Glide Suspension with Ten Outboard Mounted Air Bags and Ten Bilstein® Shock Absorbers • Automatic Traction Control • Anti-Lock Braking System with Front Disc Brakes and Rear Drum Brakes • Tag Axle with Anti-Lock Braking System • Auto Slack Adjusters on Brakes • Two-Stage Jacobs Engine Brake • Pre-Wire for Supplemental Braking System • Engine Block Heater with Switch on Dash • Automatic Air Leveling System • Undercoating • 10,000 Lb. Hitch Receiver and 7/4-Way Trailer Plug • Remote Inflation Connector 	<ul style="list-style-type: none"> • Hydraulic Leveling System • Dual Leveling System
COCKPIT: FEATURES		OPTIONS
<ul style="list-style-type: none"> • Fiberglass Automotive Dash with Canyon Burlwood Instrumentation Panel • In-Dash AM/FM Stereo with Multi-Disc CD Player and Four Speakers • Color Rear Vision System with Audio and Adjustable Camera • Aladdin™ Video Coach System • CB Radio Prep • Manual Privacy Drape • Power Sunvisors • Pilot and Co-Pilot Window Pull-Down Sunscreens 	<ul style="list-style-type: none"> • Adjustable Brake and Accelerator Pedals • Lighted VIP Smartwheel® with Controls for Windshield Wipers, ICC and Cruise Control • Audible Turn Signals • Cruise Control Light on Dash • Six-Way Power Ultraleather™ Pilot and Co-Pilot Seats with Power Adjustable Lumbar and Co-Pilot Footrest • 110V, 12V and Phone Outlet • Carpeted Driver and Passenger Floor Mats 	<ul style="list-style-type: none"> • CB Radio with Antenna • GPS Navigation System • Sirius Satellite Radio System • 3-Camera Rear Vision System with Audio and Adjustable Center Camera
APPLIANCES AND ACCESSORIES: FEATURES		OPTIONS
<ul style="list-style-type: none"> • Four-Door Refrigerator with Ice Maker and Raised Panel Doors • Recessed High-Output 2-Burner Cooktop with Flush Mount Covers • Spacesaver Convection Microwave with Touch Control • TV Antenna with Booster and RF Modulator • Prep for Satellite Receiver 	<ul style="list-style-type: none"> • 24" Flatscreen Color Stereo TV with Remote in Living Area • 20" Flatscreen Color Stereo TV with Remote in Bedroom Area • Home Theater System with DVD/VCR Player • DVD Player in Bedroom • Universal Remote Control 	<ul style="list-style-type: none"> • Combination Washer/Dryer • 32" Flatscreen LCD TV with Remote in Living Area • 20" LCD TV with Remote in Bedroom • Fully Automatic Digital Satellite System • In-Motion Digital Satellite System • Fully Automatic Digital Satellite System with HD Receiver • In-Motion Fully Automatic Digital Satellite System with HD Receiver

INTERIOR: FEATURES	OPTIONS
<ul style="list-style-type: none"> • Stained or Natural Oak Cabinetry • Lined Cabinet Shelves • Dinette Wall Cabinet with Corian® Top • Built-In Storage Area for Kitchen Countertop Covers • Bedroom Dresser with Corian® Countertop and Integrated Hamper • Heavy-Duty Ball Bearing Drawer Guides • Soft Touch Padded Vinyl Ceiling • Corian® Countertops Throughout • Integrated Corian® Sinks in Vanity and Galley • Corian® and Tile Backsplash in Galley and Vanity • Tempered Glass Splash Guard • Tip-Out Tray under Kitchen Sink • Wastebasket Storage under Kitchen Sink 	<ul style="list-style-type: none"> • Day/Night Pleated Blackout Shades in Living Area and Bedroom • Mini Blinds in Kitchen and Bathroom • Wallpaper Throughout • Drawer Organizer in Galley • Designer Carpeting in Living Area and Bedroom • Ceramic Tile Flooring in Kitchen, Bath and Entry • Raised Panel Door for Private Bath • Bedspread, Pillow Shams and Decorative Pillows • Nightstands with Corian® Countertops • Polished Brass Cabinetry Hardware and Bath Accessories • Decorative Hardwood Slide-Out Fascia Trim <ul style="list-style-type: none"> • Decors: Emerald Isle, Redwood Canyon, Silver Mink, Inca Gold • Cabinetry Options: Stained or Natural Cherry, or Natural Maple • Recessed Front Ceiling • Laminated Plank Flooring in Kitchen and Bath, in front of Washer/Dryer Cabinet and Front Entry

FURNITURE: FEATURES	OPTIONS	
<ul style="list-style-type: none"> • Legless Corian® Dinette Table with Two Dinette Chairs and Two Folding Chairs • Roadside: Ultraleather™ Rest Assured Sofa with Drawer and Decorative Accents for Sofa Arms • Curbside: Ultraleather™ J-Lounge with Drawer and Decorative Accents for Sofa Arms • Queen Bed Pillow Top Mattress 	<ul style="list-style-type: none"> • King Bed with One Nightstand • Queen Air Mattress with Digital Remote • King Air Mattress with Digital Remote • Roadside: Fabric Hide-A-Bed Sofa with Air Mattress and Decorative Accents for Sofa Arms • Roadside: Fabric Hide-A-Bed Sofa with Air Mattress and Decorative Accents for Sofa Arms • Roadside: Fabric Rest Assured Sofa with Drawer and Decorative Accents for Sofa Arms 	<ul style="list-style-type: none"> • Roadside: Wraparound Computer Table with Ultraleather™ Euro-Recliner with Ottoman • Booth Dinette

ELECTRICAL SYSTEMS AND LIGHTS: FEATURES	OPTIONS	
<ul style="list-style-type: none"> • 50 Amp 120V Distribution Panel and Power Cord with Quick Disconnect • 50 Amp Power Cord Reel • Onan® 8.0 kW Quiet Diesel Generator on Power Slide-Out with Auxiliary Start Switch (40PDQ) • Onan® 10.0 kW Quiet Diesel Generator on Power Slide-Out with Auxiliary Start Switch (N/A: 40PDQ) • 2,000 Watt Pure Sine Wave Inverter with Automatic Generator Start and Automatic Temperature Start • Pilot and Co-Pilot Map Lights • Decorative Lighting in Living Room, Dinette and Bath • Cosmetic Vanity Lights in Bathroom • Recessed Halogen Lighting under Living Room and Dinette Overhead 	<ul style="list-style-type: none"> • Fluorescent Ceiling Lights Throughout • Fluorescent Ceiling Lights inside Living Area Slide-Out House • Decorative Framed Galley Fluorescent Light • Fluorescent Light under Kitchen Overhead • Mood Lighting on Kitchen and Vanity Base • Lighted Utility Center • Underhood Utility Light • 120V Outlet in Private Bath • 120V Receptacles in Outside Storage Compartment • Porch Light • Doorbell • Lighted Exterior Storage Compartments • Four 6V Deep Cycle House Batteries • Two 12V Heavy-Duty Chassis Batteries • Surge Guard–Automatic Transfer Switch • Multiplex 12V Wiring for Dash/Instrument Panel Gauges and Interior of Coach 	<ul style="list-style-type: none"> • Solar Panel

PLUMBING AND LP SYSTEMS: FEATURES		OPTIONS
<ul style="list-style-type: none"> • Central Water Filtration System in Service Bay • Manabloc Water System for Entire Coach • 10-Gallon LP Gas/Electric Water Heater with Electronic Ignition • Insulated Systems Compartment with Easy Access to Hook-Ups • Demand Water System and Water Pump 	<ul style="list-style-type: none"> • Water Pump Switch in Galley, Bathroom and Service Bay • China Toilet • Super Service Center • One-Piece Shower (N/A: 42DSQ) • Bathtub (42DSQ) • Black Holding Tank Rinsing System • Outside Shower with Hot and Cold Water • Single Lever Kitchen Faucet with Pullout Sprayer 	<ul style="list-style-type: none"> • Power Water Hose Reel • RV Sani-Con Tank Drainage System • Insta-Hot® Water System • Bathtub
HEATING, VENTS AND AIR CONDITIONING: FEATURES		OPTIONS
<ul style="list-style-type: none"> • Two Low-Profile Ducted 15M BTU Roof Air Conditioners with Wall Thermostat and Heat Pump (40PDQ) • Two Low-Profile Ducted 15M BTU Roof Air Conditioners and One 13.5M BTU Roof Air Conditioner with Wall Thermostats and Heat Pumps (N/A: 40PDQ) 	<ul style="list-style-type: none"> • Two 25M BTU Electronic Ignition Furnaces • Electronic Air Conditioner/Heat Climate Control System • Center Defroster Vents • 12V Attic Fan in Bathroom and Private Lavatory • 12V Attic Fan with Wall Thermostat in Kitchen 	<ul style="list-style-type: none"> • Aqua-Hot® Water and Heating System • Attic Fan with Rain Sensor, Per Location (Lavatory, Private Lavatory)
WINDOWS, DOORS AND AWNINGS: FEATURES		OPTIONS
<ul style="list-style-type: none"> • Flush-Mount Radius Dual Pane Safety Glass Dark Tinted Windows • Front Entry Door with Air Seal, Removable Top Screen and Automatic Front Door Awning • Keyless Remote Entry System with Pocket Remote and Baggage Door Lock Release 	<ul style="list-style-type: none"> • Tinted Skylight in Bathroom with Protecta Glaze • Topper Slide-Out Awnings on Slide-Out Houses • Window Awnings on All Slide-Out House Windows, except Kitchen Windows and Slide-Out Windows under Patio Awning • Eclipse Automatic Patio Awning 	<ul style="list-style-type: none"> • Mirage Automatic Patio Awning
SAFETY: FEATURES		OPTIONS
<ul style="list-style-type: none"> • Back-Up Alarm • Fire Extinguisher • Deadbolt Lock on Entrance Door • Lighted Interior and Exterior Grab Handles • 120V GFI Protected Circuit • LP Gas Detector 	<ul style="list-style-type: none"> • Smoke Detector • Carbon Monoxide Detector • Integrated Pilot and Co-Pilot Three-Point Seat Belts • Third Brake Safety Light • Egress Windows • Security Safe 	<ul style="list-style-type: none"> • Deluxe Security Alarm System • Eaton® VORAD® Collision Avoidance System

Due to the large variety of options and floorplan arrangements available to our customers, actual weights for each unit can differ significantly. Holiday Rambler provides a weight sticker on each unit we produce which includes that unit's tank capacities and approximate weight. Consult your local Holiday Rambler dealer for unit availability and further information.

The information printed in this brochure reflects product design, fabrication, and component parts at the date of printing. The manufacturer reserves the right, at any time, to make changes in product design or material or component specifications as its sole option, without notice. This includes the substitution of components of a different brand or trade name, which will result in comparable performance. All information printed in this brochure is subject to change after the date of printing. Some features shown or mentioned in this brochure are optional and may only be available in selected floorplans. Photographs may show props or decorations that are not standard equipment on Holiday Rambler models. Holiday Rambler, the HR logo and its design, are registered trademarks. All other products and company names are trademarks and/or registered trademarks of their respective holders.

While the color of the motorhome's exterior and the interior fabrics depicted in this sales brochure are fair and reasonable depictions, the colors depicted may not be an exact match of the actual colors because of the variances in photo-processing and variances caused by inserting the photographs within the sales brochure. Due to product improvements, changes during the model year and/or transcription errors that may occur, information represented within this brochure may not be accurate at the time of your purchase. If certain information is significant to your purchasing decision, please confirm the information with your dealer prior to submitting your order.

The actual overall length of the recreational vehicle may differ from that indicated in the brochure due to variances in the manufacturing process and/or installed components. The actual length may be greater or less than that indicated.

Component part and appliance manufacturers issue limited warranties covering those portions of the recreational vehicle not covered by the Limited Warranties issued by Monaco Coach Corporation. To learn which specific component parts and appliances are excluded from the Limited Warranties issued by Monaco Coach Corporation, please contact your selling dealership or Monaco Coach Corporation directly, or review the warranty packet inside the recreational vehicle.

Weights (Lbs.)	40PDQ	42PBQ	42DSQ	42PEQ	42PLQ
Gross Vehicle Weight Rating	44,600	44,600	44,600	44,600	44,600
Gross Combined Weight Rating*	54,600	54,600	54,600	54,600	54,600
Front Gross Axle Weight Rating	14,600	14,600	14,600	14,600	14,600
Rear Gross Axle Weight Rating	20,000	20,000	20,000	20,000	20,000
Tag Gross Axle Weight Rating	10,000	10,000	10,000	10,000	10,000

Measurements

Wheelbase	249.5"	273.5"	273.5"	273.5"	273.5"
Overall Length	41' 1"	43' 1"	43' 1"	43' 1"	43' 1"
Overall Height with A/C	12' 6"	12' 6"	12' 6"	12' 6"	12' 6"
Interior Height	84"	84"	84"	84"	84"
Interior Width	96"	96"	96"	96"	96"
Exterior Width	100.5"	100.5"	100.5"	100.5"	100.5"

Tank Capacities (Gal.)**

Water Heater	10	10	10	10	10
Gray Tank	56	56	56	56	56
Black Tank	56	56	56	56	56
Fresh Tank	100	100	100	100	100
LP Tank***	38	38	38	38	38
Fuel Tank	130	130	130	130	130

* Towing capacity is limited by GCWR; your vehicle's towing capacity is the difference between the GCWR and the actual vehicle weight, including all water, fuel, passengers and cargo. Your towed vehicle should be equipped with auxiliary brakes if the weight of the towed vehicle exceeds 1,000 lbs. Consult your Owner's Manual for further towing information.

** Variances in the fabrication and installation of the tanks may cause the actual "usable capacity" to be greater or less than the capacities designated above.

*** Actual filled LP capacity is 80% of listing due to safety shut-off required on tank.

AT HOLIDAYRAMBLER.COM, WE'RE ALWAYS OPEN.

Visit our website anytime day or night to check out the latest product news and updates. You can also take a factory tour, find a dealer near you, get information on club events and much more. It's also an easy way to contact us via e-mail.

www.holidayrambler.com

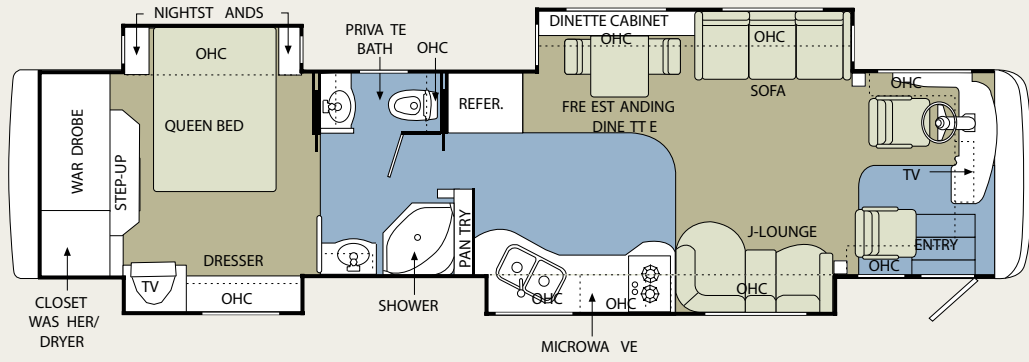


WE'VE GOT YOUR BACK.

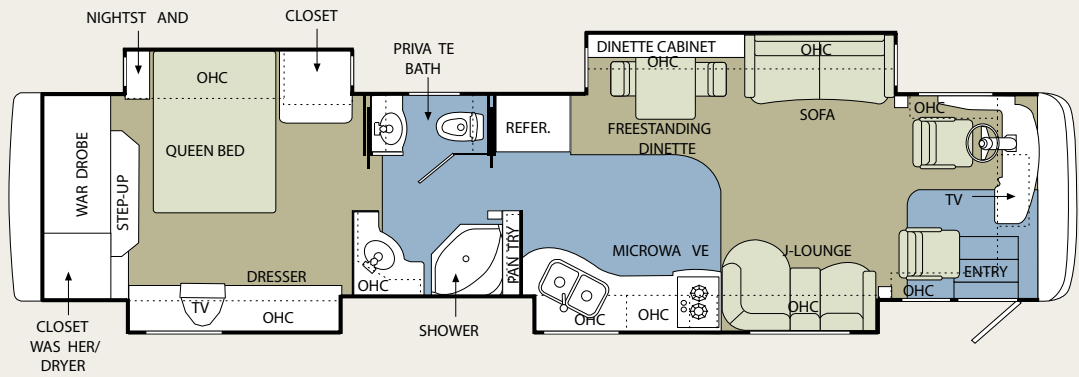
- Live customer support 24/7/365
- 350 Nationwide Service Centers
- Free first-year enrollment in our Owner Advantage Roadside Assistance Program
- Call 1-800-634-0855 or 1-800-650-7337 to arrange a tour of one of our state-of-the-art production facilities in Indiana or Oregon.



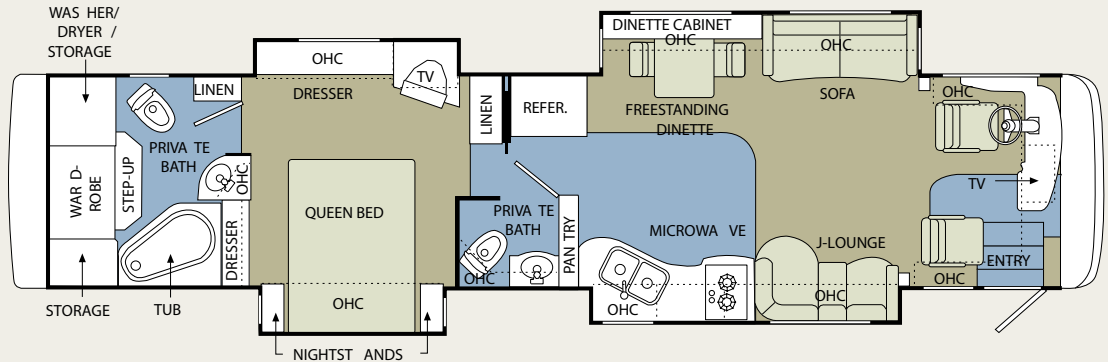
40PDQ



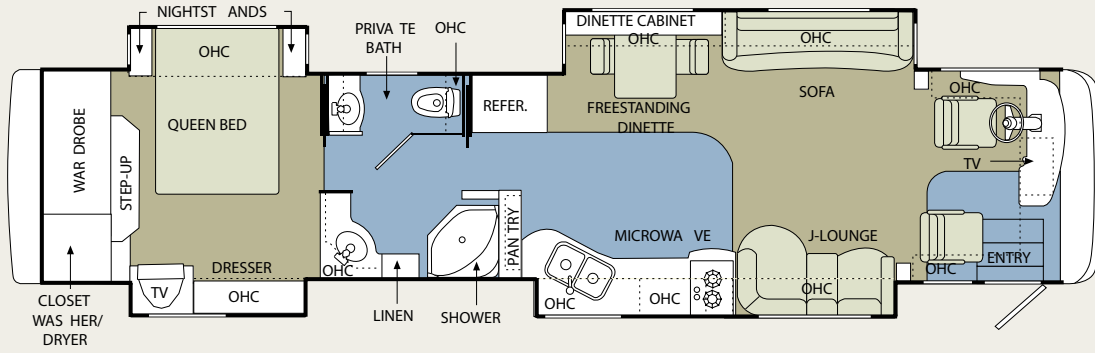
42PBQ



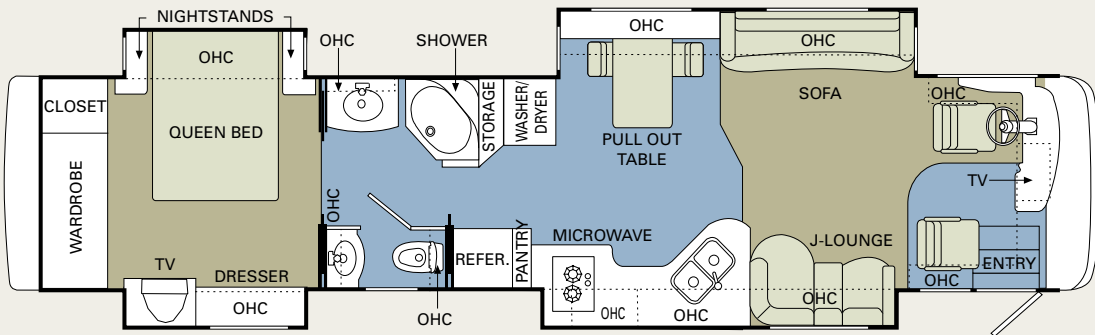
42DSQ



42 PLQ



42 PEQ



Carpet Tile

20 IMPERIAL™ 06



Thank you for taking a closer look at the 2006 Imperial. In addition to the state-of-the-art technologies and creature comforts you'll see here, this luxury diesel coach includes countless conveniences and safety innovations you'll want to experience firsthand. Poke around. Kick the tires. Open and shut every door and drawer — twice. And most importantly, take a drive. You can count on our expert sales team to answer all your questions and demonstrate why this truly is the best experience the road has to offer.

WARRANTIES

12 MONTH/24,000 MILE basic limited warranty

5 YEAR/50,000 MILE limited warranty on aluminum or steel frame structure of sidewall, roof, front and rear cap

3 YEAR/36,000 MILE limited warranty on Roadmaster chassis

Applies to certain models. See owner's manual for complete details.

ALL EYES ON THE ROAD AHEAD.

If you're considering a Holiday Rambler, chances are you share our pioneer spirit. For us, it goes back to 1953, the year we introduced our first travel trailer. Since then, our countless innovations have helped create a rich, rewarding lifestyle — and a new way for families like yours to go exploring.

Yes, we're proud of our heritage — but we're not looking back. In these pages, you'll discover that we continue to lead the entire industry. With exciting new features, powerful chassis, remarkable floorplans and, as always, more ways of keeping you and your loved ones safe.

Whether you're looking for the value of a towable, the convenience and economy of a gas motorhome or the top-of-the-line luxury of a diesel coach — Holiday Rambler has an unbeatable model for your budget. Because in 2006, one thing's for sure. We're still paving the way.



HOLIDAY RAMBLER®

This is Living®

606 Nelson's Parkway Wakarusa, IN 46573

www.holidayrambler.com
(800) 245-4778


MONACO COACH CORPORATION

Monaco is traded on the New York Stock Exchange under the listing MNC.
© 2005, Monaco Coach Corporation 11/05 NPN:BROHIMP Litho in USA.

