

065 SUNCRUISER®





# 06 SUNCRUISER

38T CAVALIER WITH WASHED MAPLE



## THE BEST GETS BETTER.

Innovative designs. Seven distinct models. And more standard features than ever before. It's no wonder the Itasca Suncruiser is our best-selling Class A motor home. Every model is created with our SmartSpace™ design philosophy that encourages innovation to make the most of interior space,

including an impressive 7' 2" interior height. This is especially evident in the new 38T that features a forward-galley layout and an entertainment center with an available electric fireplace. If you want the best in Class A comfort and amenities, you'll find it in the 2006 Itasca Suncruiser.

 SMARTSPACE



## START LIVING.

Bring the latest in home entertainment with you wherever you go. Suncruiser comes with a 27" Sony® flat-face TV, a DVD/VCR combo and Sony Home Theater Sound System that rivals high-end residential systems. An available in-motion digital satellite dish captures satellite programming while you're on the road. Add the 600-watt inverter and you'll have power even when you're not connected to a shoreline source or generator.

This year, the 38T joins the model lineup with more square feet of living space than ever before. The Home Comfort Plus Package comes standard on all models, providing an auxiliary automotive heater, insulated power roof vents and a heat pump that warms your coach without using the LP furnace.

33V WINTER WHEAT WITH SIERRA MAPLE



### ENTERTAINMENT CENTER

Four models feature a stand-alone entertainment center. Cozy up to the electric fireplace (available 38T) in the relaxing hoop-base reclining chair.



**LOUNGE AS YOU PLEASE.** Furniture options include the A) J-lounge with power recliner (38J, 38R only), B) Hoop-base lounge chair that can be moved to your favorite location when the coach is parked and the C) available Rest Easy® multi-position lounge that glides from a couch to a recliner to a comfortable bed at the touch of a button.





**AN INVITING GALLEY.**

Stainless steel appliances accented with indirect lighting create a galley that is as stylish as it is functional.

You can cook almost anything on the three-burner range or in the microwave/convection oven with range fan. Plus, plentiful cabinet and drawer storage with full-extension slides holds all your food and supplies. The refrigerator/freezer can be upgraded to a four-door model with an icemaker. A slideout pantry is standard. Depending on the model you select, you'll be able to choose between a freestanding dining table, BenchMark™ dinette or the innovative multifunction table that doubles as a computer desk. There's a table to fit every lifestyle.

**GALLEY** Upscale features are plentiful, including solid-surface countertops with a flip-up extension (NA 38T) and a water filtration system with a dedicated faucet. Full-extension drawer slides let you get at all your stored goods easily.



**FULL-EXTENSION DRAWER SLIDES** Every drawer is 100% accessible.



**BenchMark™** This full comfort dinette features innerspring cushions, large, easy-to-use flip up storage compartments and a child safety-seat tether. It even converts easily into a comfortable bed (NA 38J, 38R).



**DINING TABLE** A freestanding table comes in a round or oval design, offering a more residential dining experience (Available 33V, 35A, 35U, 37B, 38T, Standard 38J, 38R).



## A BETTER BEDROOM.

A standard slideout allows for a spacious bedroom with plentiful storage and a queen-size walk-around bed. And if you like to catch the news before bed, you'll appreciate the 20" flat-face TV in the bedroom (24" in the 37B). The TV is wired to the front video components, which can be operated by remote from the bedroom. A rear stereo system is also available, including AM/FM radio, CD player and alarm clock.

The bathroom has a spacious design that allows for more storage and an abundance of residential features. In the shower, you'll notice the temperature remains constant even if the water pressure fluctuates, thanks to the Moen Posi-Temp® valve.

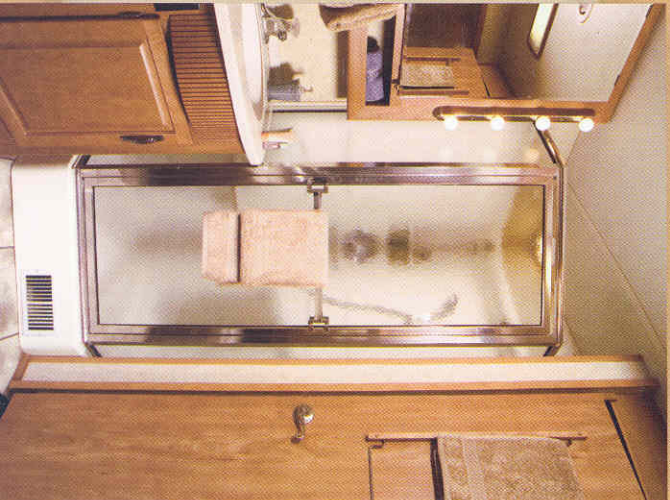


38T CAVALIER WITH WASHED MAPLE



BEDROOM VANITY AND TV

**BATH**  
An available shower upgrade package provides a fold-down shower seat and a handheld showerhead.



**WASHER/DRYER** Do laundry in the comfort of your motor home when you add the washer/dryer combination (NA 33V, 35U).



**SLEEP NUMBER BED** The available Vantage Point Sleep Number® Bed by Select Comfort™ includes digital hand controls that let you quickly adjust the firmness of each side of the mattress to your Sleep Number — the Key to a Perfect Night's Sleep.™



## DRIVE SAFELY.

Suncruiser puts you at ease behind the wheel with navigational features like the available rearview monitor with one-way audio and an electric compass with a built-in outdoor thermometer. You can also add a GPS system and the new video camera system that allows the driver to view both sides of the coach through the rearview video monitor.

The driver will also enjoy the convenience of available powered sunvisors, map lights and the RV Radio.<sup>®</sup> This popular stereo system includes AM/FM radio, CD player, weather band and two remotes: one mounted to the steering wheel and one handheld remote for use when parked. The radio is ready to be enhanced with Sirius<sup>®</sup> Satellite\* radio, providing over 120 channels of digital programming with no signal fades. This option includes a complimentary six-month subscription.

\*Sirius Satellite radio not available in Canada.



**DASH** Designed with ergonomic styling, the dash places controls right at your fingertips, including a steering wheel remote for the RV Radio.

**TWO-WAY RADIOS** Four available radios come housed in a built-in charging station and help you stay in touch around town.



**WORKSTATION** Great for a laptop computer and it slides forward to access the storage compartment.



**ONEPLACE<sup>®</sup>** This complete systems center places frequently used switches, gauges and controls in one convenient location.



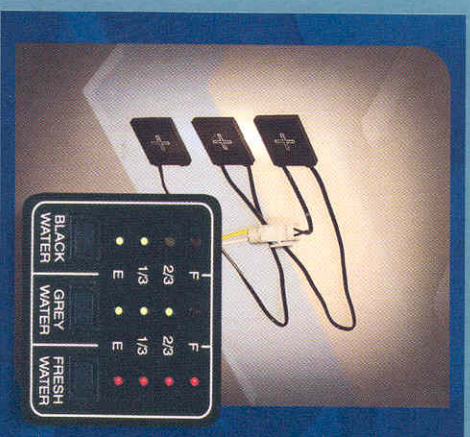
**POWERLINE<sup>®</sup>** This energy management system monitors electrical usage and automatically cycles appliances on and off to prevent power overloads.



**TRUEAIR<sup>™</sup>** The TrueAir<sup>™</sup> residential central air conditioning system cools 40% faster and runs 10% quieter than roof a/c. The key is a Coleman<sup>®</sup>-Mach<sup>®</sup> cooling unit located in the basement for a lower vehicle profile.



**TRULEVEL<sup>™</sup>** To eliminate the guesswork, our exclusive Truelevel holding tank monitoring system incorporates Mirus<sup>™</sup> detector cells that detect liquid levels from the outside of the tank. No internal probes mean no more corrosion or clogging, just accurate readings time after time.



\*Mirus is a trademark of Material Sciences Corporation.



## LOOK SHARP.

You'll turn some heads at the campsite when you pull in with an Itasca SunCruiser sporting one of the available full-body paint schemes and newly styled front and rear caps. If you want to bring a car along, the 5,000-lb. hitch with seven-pin wiring connector is up to the task. The side mirrors have a breakthrough design that provides extra clearance at the campground or for storage.

Once you've settled on a spot, the hydraulic leveling jacks with available automatic controls will level your coach in seconds. You'll be relaxing beneath the awning in no time and protected from the sun by the available awning sunscreen.

Hookups are a snap in the service center featuring colored labels and the QuickPort® service connection hatch. QuickPort holds the hose and cords in place while allowing the bay door to fully close. The service center also contains a wash station, electrical center and a connection for a portable satellite system.



### STORE MORE

Exterior compartments extend with the slideroom for easy access to your belongings thanks to the StoreMore slideout system. New for 2006, enjoy increased height on storage compartment doors with gas struts that open effortlessly.



### EXTERIOR ENTERTAINMENT CENTER

Includes a CD player, AM/FM radio, two speakers, 12-volt powerpoint, 110-volt outlet, TV jack and a removable table.



**SERVICE CENTER** Spend less time hooking up your SunCruiser by using the QuickPort service connection hatch and QuickConnect® coupling valve. QuickConnect even includes its own holster for storage.



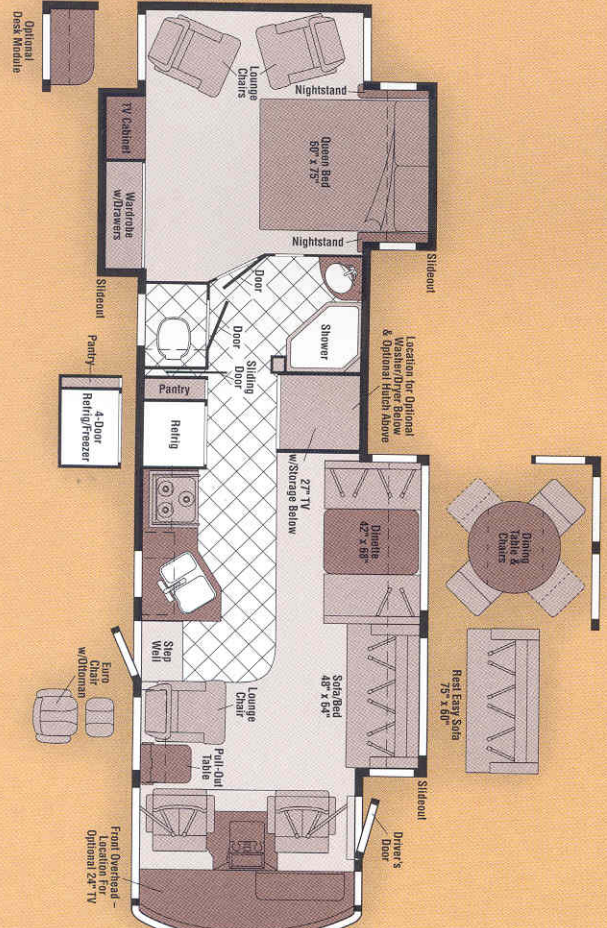
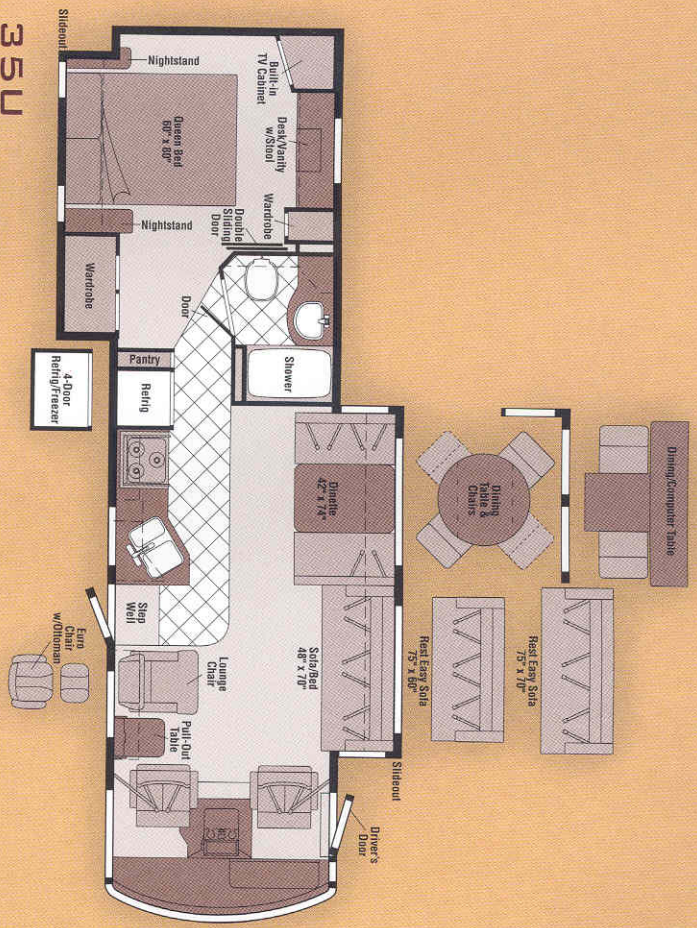
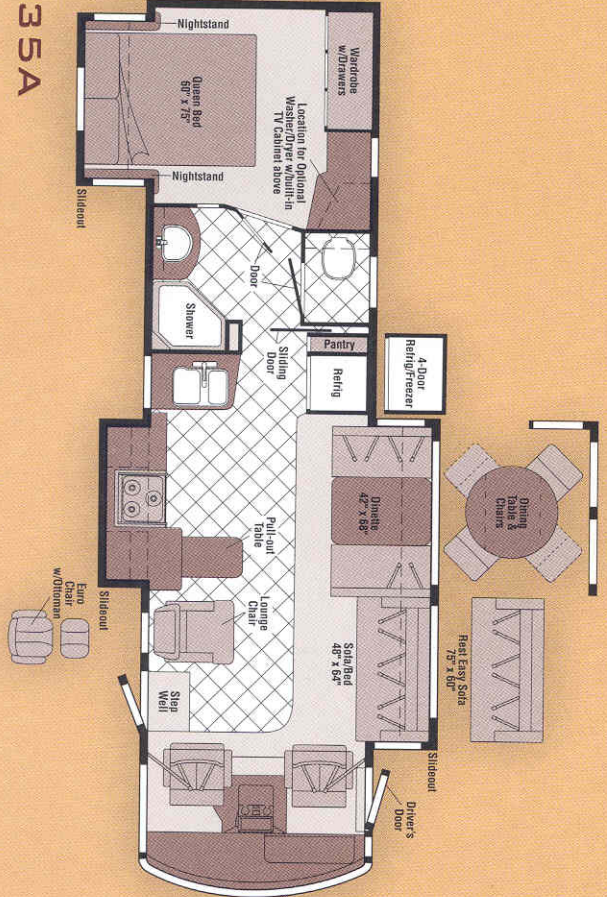
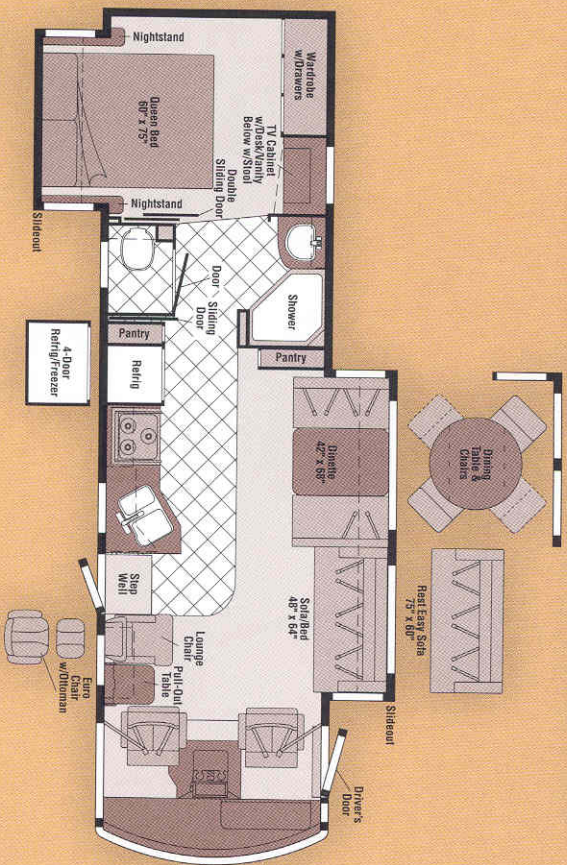


# 06 FLOORPLANS

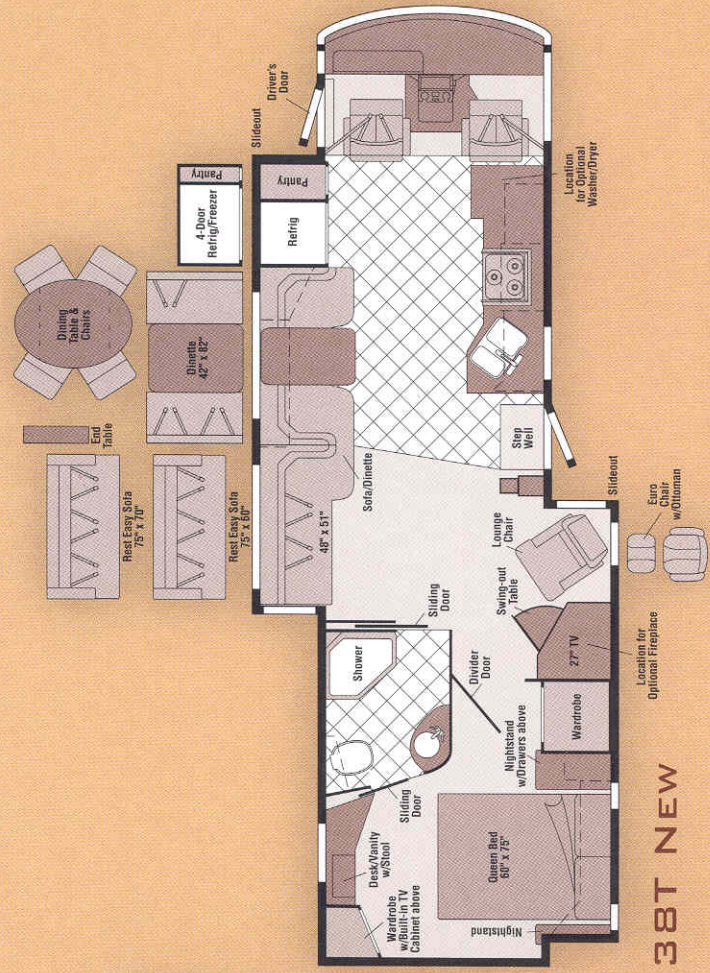
 Vinyl Tile  
 Floorcovering

 Seat Belts

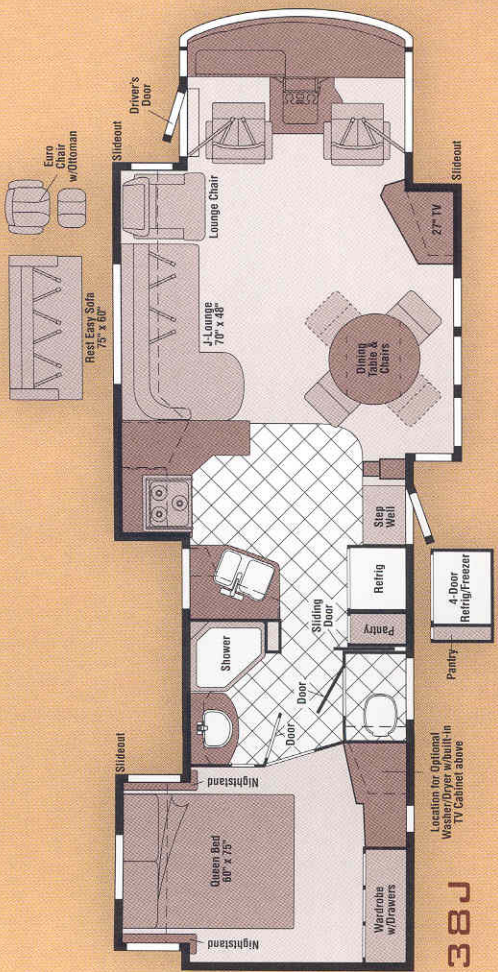
Note: Dimensions shown are for sleeping space only and may vary due to styling differences. Dashed lines denote overhead storage areas.



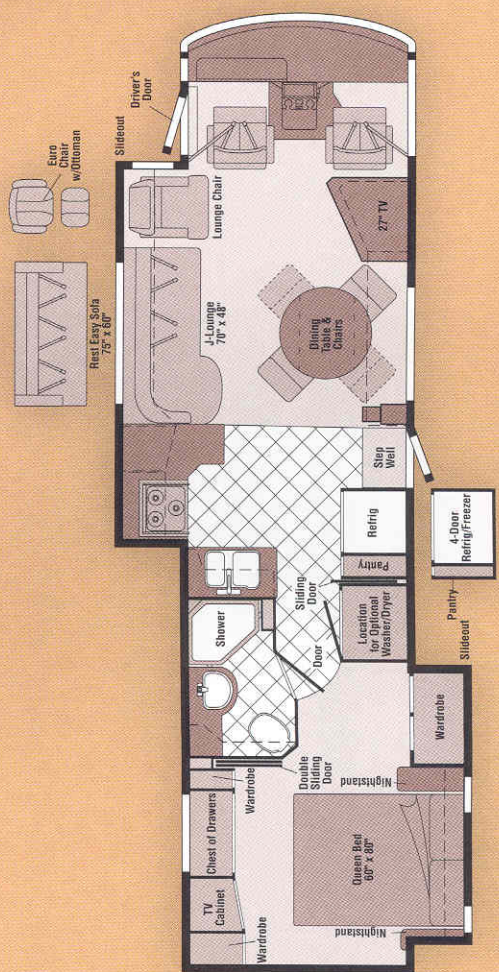




38T NEW



38J



38R



# 06 SPECIFICATIONS

WEIGHTS & MEASURES		33V										35A										35U										37B										38J										38R										38T NEW																													
Length		33'8"										35'11"										35'8"										37'11"										38'10"										38'11"										38'11"																													
Exterior Height <sup>1</sup>		12'2"										12'2"										12'2"										12'1"										12'0"										12'0"										12'1"																													
Exterior Width <sup>2</sup>		8'6"										8'6"										8'6"										8'6"										8'6"										8'6"										8'6"																													
Exterior Storage <sup>3</sup> (cu. ft.)		68.2										90										91										107.4										106.9										120										109.3																													
Interior Height		7'2"										7'2"										7'2"										7'2"										7'2"										7'2"										7'2"																													
Interior Width		8'1"										8'1"										8'1"										8'1"										8'1"										8'1"										8'1"										8'1"																			
Freshwater Capacity w/Heater <sup>4</sup> (gal.)		86										88										86										88										88										88										88										108																			
Holding Tank Cap. - Black/Gray <sup>5</sup> (gal.)		55/43										50/75										45/49										50/58										51/53										45/49										53/70																													
LP Capacity <sup>6</sup> (gal.)		28										28										28										28										28										28										28										28																			
Fuel Capacity (gal.)		75										75										75										75										75										75										75										75																			
GCWR <sup>7</sup> (lbs.)		26,000 <sup>■</sup> / 26,000 <sup>□</sup>										26,000 <sup>■</sup> / 30,000 <sup>●</sup>										26,000 <sup>■</sup> / 26,000 <sup>□</sup>										30,000 <sup>●</sup>										30,000 <sup>●</sup>										30,000 <sup>●</sup>										30,000 <sup>●</sup>										30,000 <sup>●</sup>																			
GVWR (lbs.)		22,000 <sup>■</sup> / 22,000 <sup>□</sup>										22,000 <sup>■</sup> / 24,000 <sup>●</sup>										22,000 <sup>■</sup> / 22,000 <sup>□</sup>										24,000 <sup>●</sup>										24,000 <sup>●</sup>										24,000 <sup>●</sup>										24,000 <sup>●</sup>										24,000 <sup>●</sup>																			
GAWR - Front (lbs.)		7,500 <sup>■</sup> / 8,500 <sup>□</sup>										7,500 <sup>■</sup> / 9,000 <sup>●</sup>										7,500 <sup>■</sup> / 8,500 <sup>□</sup>										9,000 <sup>●</sup>										9,000 <sup>●</sup>										9,000 <sup>●</sup>										9,000 <sup>●</sup>										9,000 <sup>●</sup>																			
GAWR - Rear (lbs.)		14,500 <sup>■</sup> / 15,000 <sup>□</sup>										14,500 <sup>■</sup> / 15,500 <sup>●</sup>										14,500 <sup>■</sup> / 15,000 <sup>□</sup>										15,500 <sup>●</sup>										15,500 <sup>●</sup>										15,500 <sup>●</sup>										15,500 <sup>●</sup>										15,500 <sup>●</sup>																			
Wheelbase		208"										228"										228"										228"										228"										228"										228"										248"										248"									

■ = Chassis A □ = Chassis B ● = Chassis C

AUTOMOTIVE/CHASSIS	33V	35A	35U	37B	38J	38R	38T
<b>Chassis A</b> - Ford 6.8L Super-Duty V10 SOHC Triton <sup>®</sup> engine, 362-hp, TorqShift <sup>™</sup> 5-speed overdrive transmission, 130-amp, alternator, 4-wheel ABS, Tires 22.5", Wheels stylized aluminum	0	0	0	0	0	0	0
<b>Chassis B</b> - Workhorse 8.1L Vortec V8, 340-hp, Allison <sup>®</sup> 1000 electronic overdrive transmission, 145-amp, alternator, 4-wheel ABS, Steering Wheel custom, Tires 22.5", Wheel Liners stainless steel	\$	\$	\$	\$	\$	\$	\$
<b>Chassis C</b> - Workhorse 8.1L Vortec V8, 340-hp, Allison <sup>®</sup> 12100 MH electronic overdrive transmission, 145-amp, alternator, 4-wheel ABS, Steering Wheel custom, Tires 22.5", Wheel Liners stainless steel	0	0	0	0	0	0	0

CAB AREA & DRIVER CONVENIENCES	33V	35A	35U	37B	38J	38R	38T
<b>Cab Seats</b> (fabric) multiposition armrests, headrest, manually adj. lumbar support, multidial, swivel/slide/recline, Cab Seat Pedestal 6-way power-assist (driver & passenger), Fans (2) aux. 2-speed w/instrument panel switch, GPS Navigation System Alpine, Monitor System color rearview w/single camera & one-way audio, Sony <sup>®</sup> Sunvisors (2) powered, switch, Video Camera System 2 side-mounted cameras	\$	\$	\$	\$	\$	\$	\$
<b>Leveling Jacks</b> HHM <sup>®</sup> hydraulic, manual touch pad w/c/line, drawbar/500 lbs. maximum vertical tongue weight & 7-pin wiring connector	\$	\$	\$	\$	\$	\$	\$
<b>Leveling Jacks</b> HHM <sup>®</sup> hydraulic, automatic controls, Wheels stylized aluminum (Workhorse chassis)	0	0	0	0	0	0	0

CAB AREA & DRIVER CONVENIENCES	33V	35A	35U	37B	38J	38R	38T
<b>Cab Seats</b> (Ultral <sup>®</sup> leather HP <sup>™</sup> ) manual adj. lumbar support, Cab Seat Pedestal 6-way power-assist (driver), Cab Seat Pedestal 6-way power-assist (driver & passenger), Detachable Fans (2) aux. 2-speed w/instrument panel switch, GPS Navigation System Alpine, Monitor System color rearview w/single camera & one-way audio, Sony <sup>®</sup> Sunvisors (2) powered, switch, Video Camera System 2 side-mounted cameras	0	0	0	0	0	0	0

ENTERTAINMENT	33V	35A	35U	37B	38J	38R	38T
<b>CB Prep antenna</b> , antenna lead, 12-volt DC powerpoint, Entertainment Center w/CD Player (exterior) DC receptacle, AC duplex receptacle, AM/FM radio w/remote, exterior antenna jack, TV jack, radio antenna, speakers (2), lockable compartment, removable table, Home Theater Sound System amplifier, DVD/VCR, receiver, speakers (5), subwoofer, Sony <sup>®</sup> RV Radio <sup>®</sup> (cab) AM/FM Stereo/CD player w/weather band, remotes (one handheld, one steering wheel-mounted), roof-mounted flexible rubber antenna, speakers (4), Sirius <sup>®</sup> Satellite ready, Radio Power Switch main/aux. battery, Satellite System ready, telephone input & interior jacks, TV Enhancement Package antenna (amplified), interior jacks, coax wiring, cable input, antenna check reminder light, Video Selection System	\$	\$	\$	\$	\$	\$	\$
<b>CB Cobra<sup>®</sup> Compact Multidisc Changer</b> , Radios (4) 2-way docking port w/charger, Satellite Dish Antenna RV digital, elevation sensing unit, manual or power, Satellite System RV digital, in-motion, King-Dome <sup>®</sup> Satellite Radio Sirius (N/A in Canada, includes six-month subscription), Stereo System (rear) AM/FM/CD Player, alarm clock	0	0	0	0	0	0	0
<b>Entertainment Center</b> TV 27" flat-face, stereo color AC w/remote, Sony	\$	\$	\$	\$	\$	\$	\$
TV 20" flat-face, color AC w/remote, remote extender, bedroom, Sony	\$	\$	\$	\$	\$	\$	\$
TV 24" flat-face, color AC w/remote, remote extender, bedroom, Sony	\$	\$	\$	\$	\$	\$	\$
TV 27" flat-face, stereo color AC w/remote, Sony & hutch cabinet	\$	\$	\$	\$	\$	\$	\$

INTERIOR	33V	35A	35U	37B	38J	38R	38T
<b>Ceiling vinyl</b> , Clock, Lights ceiling, incandescent bath, bedroom w/wall switches, Light decorative oval, Lights fluorescent, recessed, galley, lounge, bath, hallway w/wall switches, Lights reading, Mini Blinds galley & bath, Shade Package roof vents, room darkening, insulated, Shades day/night pleated, lounge, dinette, bedroom, Windows flush-mounted, dual-glazed/thermo-insulated	\$	\$	\$	\$	\$	\$	\$
<b>Cupholders</b> (5)							\$
<b>Fireplace electric</b>							\$
<b>Light halogen (lounge)</b>							\$
<b>Light wall lamp (lounge)</b>							\$
<b>Mirror</b>	\$	\$	\$	\$	\$	\$	\$
<b>Picture framed</b>	\$	\$	\$	\$	\$	\$	\$

CABINETRY	33V	35A	35U	37B	38J	38R	38T
<b>Portsmouth Oak or Concert Cherry or Washed Maple or Sierra Maple</b> stile-and-rail construction w/attached raised-panel inserts on upper doors	0	0	0	0	0	0	0

FLOORCOVERING	33V	35A	35U	37B	38J	38R	38T
<b>Carpeting w/pad, Vinyl Tile</b> bath, galley	\$	\$	\$	\$	\$	\$	\$

FURNITURE	33V	35A	35U	37B	38J	38R	38T
<b>Dining Table &amp; Chairs</b> (2) freestanding, (2) folding	0	0	0	0	0	0	0
<b>BenchMark<sup>™</sup></b> full comfort dinette, access to storage below, child seat tether anchor	\$	\$	\$	\$	\$	\$	0
<b>Lounge Chair</b> (fabric) hoop-base, cabinet w/table, recliner, rocker, footrest	\$	\$	\$	\$	\$	\$	\$
<b>Lounge Chair</b> (Ultral <sup>®</sup> leather HP) hoop-base, Rest Easy <sup>®</sup> dual-control multi-position lounge (fabric or Ultral <sup>®</sup> leather HP) 75" x 60"	0	0	0	0	0	0	0
<b>Lounge Chair</b> (Ultral <sup>®</sup> leather HP) Euro chair w/ottoman	\$	\$	\$	\$	\$	\$	\$
<b>Lounge Chair</b> (fabric) hoop-base, recliner, rocker, footrest	\$	\$	\$	\$	\$	\$	\$
<b>Multifunction Table &amp; Chairs</b> (2) freestanding, (2) folding	\$	\$	\$	\$	\$	\$	\$



## LOWER VALANCE PAINT



Medium Titanium  
Metallic



Granite  
Metallic

## FULL-BODY PAINT



Deep Forest



Vermillion

Winnebago Industries, Inc. | Phone: (941) 355-3335 | This site uses: Flash, Acrobat Reader, QuickTime

http://www.winnebagoind.com/

Home | About Us | Investor Relations | RV News | Careers | Corporate US | Meet Us

Winnebago Industries, Inc.

Company | Products | Lifestyle | Resources | Dealers Only

Move People. Trust Winnebago Industries. That's Any Other Brand!

Winnebago  
Itasca

TRUFAIR  
TRULIFE  
COUNTRYSIDE

TRULIFE  
COUNTRYSIDE  
TRULIFE  
COUNTRYSIDE

WINNEBAGOIND.COM Visit us on the web for more info on all of our motor homes, latest product updates and a host of web-exclusive content.



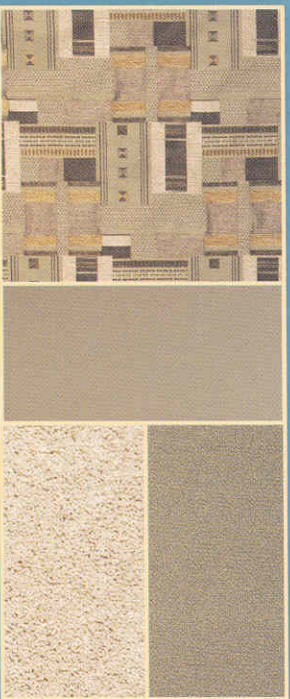
## INTERIOR DECOR

Choose from three fabric selections and four wood choices.

SOFA	LEATHER	
	BEDSPREAD	CARPET



Winter Wheat w/available Papyrus UltraLeather HP™



Cavalier w/available Buff UltraLeather HP™



Cavalier w/available Buff UltraLeather HP™



Portsmouth  
Oak



Concert  
Cherry



Washed  
Maple



Sierra  
Maple



FURNITURE	33V	35A	35U	37B	38J	38R	38T
<b>Rest Easy</b> multi-position lounge (fabric), throw pillows & fold-down armrest w/beverage holder	0	0	0	0	0	0	0
<b>Rest Easy</b> multi-position lounge (fabric), power recliners, dual-trundle storage, end table (SRT only) 75" x 70"	0	0	0	0	0	0	0
<b>Rest Easy</b> multi-position lounge (ultraleather HP), fold-down armrest w/beverage holder	0	0	0	0	0	0	0
<b>Sofa</b> (fabric), removable armrests (2), footrests (2), throw pillows (2)	\$	\$	\$	\$	\$	\$	\$
<b>Sofa</b> (fabric), J-lounge, power recliner, drawer below	\$	\$	\$	\$	\$	\$	\$
<b>Sofa</b> (ultraleather HP), J-lounge, power recliner, drawer below	0	0	0	0	0	0	0
<b>Sofa/Dinette</b> (fabric), access to storage below, folding chairs (2), single footrest on sofa	\$	\$	\$	\$	\$	\$	\$
<b>Sofa/Dinette</b> (ultraleather HP)	0	0	0	0	0	0	0

GALLERY	33V	35A	35U	37B	38J	38R	38T
<b>Countertops</b> solid-surface w/backsplash, <b>Cutting Board</b> slide-out, <b>Faucet</b> single-control w/pull-out sprayer, <b>Light</b> fluorescent, under cabinet, <b>Lights</b> indirect, <b>Microwave/Connection Oven</b> w/vented range fan, touch control, stainless steel, <b>Sharp® Pantry/Yes</b> , <b>Range Top</b> 3-burner w/storage below, sealed burners, stainless steel, <b>Antana® Range Cover, Refrigerator/Freezer</b> large double-door, stainless steel, <b>Norcold® Sink</b> double-bowl molded w/sink covers (countertop material), <b>Wastepaper Basket</b> , <b>Water Purification System</b> w/separate faucet	\$	\$	\$	\$	\$	\$	\$
<b>Apothecary Drawers, Appliance Storage Cabinet, Decorative Storage Cabinet, Pull-out table</b>	\$	\$	\$	\$	\$	\$	\$
<b>Countertop Flip-Up Extension(s)</b>	\$	\$	\$	\$	\$	\$	\$
<b>Magazine Rack</b>	0	0	0	0	0	0	0
<b>Range</b> 3-burner w/large oven, recessed, sealed burners, one w/high-output, stainless steel, <b>Antana, Refrigerator/Freezer</b> large double-door w/centrainer, stainless steel, <b>Norcold, Refrigerator/Freezer</b> 4-door w/centrainer, stainless steel, <b>Norcold</b>	0	0	0	0	0	0	0
<b>Utility Tray</b> tip-out	\$	\$	\$	\$	\$	\$	\$
<b>Wall Border</b>	\$	\$	\$	\$	\$	\$	\$

BATH	33V	35A	35U	37B	38J	38R	38T
<b>Cabinet</b> lavatory, <b>Cabinet</b> medicine, <b>Countertops</b> solid-surface w/back splash (NA 38T), <b>Faucet</b> (lavatory) single-control, <b>Faucet</b> (shower) single-control, fixed showerhead w/Moist Post-Temp, <b>Hair Dryer</b> wall-mounted w/light light, <b>Light</b> shower, <b>Lights</b> makeup, <b>Shower</b> w/wall surround, <b>Shower Door(s)</b> textured glass, <b>Sink, Toilet</b> (porcelain) w/foot-pedal flush	\$	\$	\$	\$	\$	\$	\$
<b>Cabinet</b> linen	\$	\$	\$	\$	\$	\$	\$
<b>Chair</b> hair private toilet room	\$	\$	\$	\$	\$	\$	\$
<b>Clothes Rod</b> removable	\$	\$	\$	\$	\$	\$	\$
<b>Magazine Rack, Mirror</b>	\$	\$	\$	\$	\$	\$	\$
<b>Robe Hook</b>	0	0	0	0	0	0	0
<b>Shower Package</b> handfield showerhead, fold-down shower seat	0	0	0	0	0	0	0
<b>Towel Rack</b> 3-rod, mounted to door	\$	\$	\$	\$	\$	\$	\$

BEDROOM	33V	35A	35U	37B	38J	38R	38T
<b>Bed</b> queen, innerspring mattress w/underbed storage, <b>Bedspread</b> , <b>Light</b> decorative ceiling, <b>Lights</b> (2), <b>pillows</b> , wall lamps, <b>Mirror(s)</b> back wall, <b>Nightstands (2)</b> , <b>Powerpoint</b> 12-volt DC receptacle(s), <b>Throw Pillow</b> , <b>Wardrobe Cabinet</b> cedar lined, carpeted floor, clothes rod, drawers (NA 35U, 38R), light	\$	\$	\$	\$	\$	\$	\$
<b>Chest of Drawers</b>	\$	\$	\$	\$	\$	\$	\$
<b>Desk</b> w/folding chair	0	0	0	0	0	0	0
<b>Hamper</b>	\$	\$	\$	\$	\$	\$	\$
<b>Headboard</b>	\$	\$	\$	\$	\$	\$	\$
<b>Light</b> halogen vanity	\$	\$	\$	\$	\$	\$	\$
<b>Lounge Chairs</b> (2) w/storage ottomans, <b>Flexsteel®</b>	0	0	0	0	0	0	0
<b>Sleep Number® Bed</b> queen by Select Comfort®, remote holders	\$	\$	\$	\$	\$	\$	\$
<b>Vanity Cabinet</b> w/fold-up countertop, stool	\$	\$	\$	\$	\$	\$	\$
<b>Wainscoting</b> w/chair rail, <b>Wall Border</b> slide-out room only	\$	\$	\$	\$	\$	\$	\$

EXTERIOR	33V	35A	35U	37B	38J	38R	38T
<b>Awning</b> Rains rain gutters, <b>Door</b> entrance w/separate screen door, deadbolt lock, <b>Door</b> fuel-fill, <b>Entrance Door</b> Steps triple electric w/doorjamb switch, <b>Exterior Graphics Packages</b> Medium Titanium Metallic or Granite Metallic (w/protective film below entry door), <b>Ladder, Lights</b> fog lamps, <b>Light</b> porch w/interior switch, <b>Light</b> driver side service, <b>Mirrors</b> electric, remote w/defrost, breakaway design, <b>Mudflaps</b> front & rear, <b>Receptacle</b> AC duplex, <b>Sidewall Skin</b> one-piece smooth fiberglass, high-gloss, <b>Storage Compartments</b> smooth valance panels, trunk liner, gas struts, <b>TriMark® Key/One™</b> System, paddle latch, lights, interior master light shut off switch	\$	\$	\$	\$	\$	\$	\$
<b>Awning</b> patio	\$	\$	\$	\$	\$	\$	\$
<b>Awning</b> patio, electric w/wind sensor, remote	0	0	0	0	0	0	0
<b>Awning</b> patio, sunscreen (requires electric awning package), <b>Front Protective Mask</b> w/full-body paint, <b>Full-Body Paint</b> , <b>Deep Forest</b> or <b>Vermillion</b> (w/protective film below entry door), <b>Undercoating</b> (Workhorse only)	0	0	0	0	0	0	0

SYSTEMS	33V	35A	35U	37B	38J	38R	38T
<b>Automotive Heater/A/C, Aux. Start Circuit, Batteries</b> (2) (coach) Group 24 deep-cycle, w/discconnect system, <b>Battery Charge Control</b> automatic dual, <b>Converter/Charger</b> 55-amp, electronic, <b>Drain</b> 1" water tank, <b>Electrical Distribution System</b> AC & DC breaker panels, <b>Generator</b> 3,500-watt, <b>Onan® Marquis Gold®</b> gas, <b>Generator/Shoreline Automatic Changeover Switch, Home Comfort Plus Package</b> central air heat pump, aux. automotive heater, insulated powered ventilator fans (dash & galley), <b>OnePlace™</b> systems center, wall-mounted, battery digital voltmeter, energy management display, generator hourmeter gauge, generator start/stop switch, holding tank levels, LP tank level, solar panel/battery charger, light, water heater switch & lights, water pump switch & light, water tank level, courtesy ceiling light, <b>Power Cord</b> 30-amp, <b>PowerLine™</b> energy management system, <b>Service Center</b> (drainage/water) city water hook-up/tank diverter fill, drainage valves, exterior wash station w/pump switch, 10' sewer hose, <b>QuickConnect®</b> coupling valve, <b>QuickPort®</b> service connection hatch, <b>Service Center</b> (electrical) cable input power cord, <b>QuickPort</b> service connection hatch, telephone input, portable satellite dish hookup, <b>Solar Panel</b> 10-watt battery charger, <b>Tank</b> flushing system, black tank only, <b>Tank</b> holding, heated compartment, <b>Tank</b> LP permanent mount w/gauge, <b>TrueAir™</b> central air conditioning system, <b>TrueLevel™</b> holding tank monitoring system, <b>Water Heater</b> 10-gallon electronic ignition, 120 VAC/LP gas w/motor, <b>Water System Winterization Package</b> water heater bypass valve & siphon tube, <b>Water Pump</b> demand, variable speed, <b>Water Tank Fill</b> gravity w/locking door (NA 38J), <b>Water Tank Fill</b> pressurized city hook-up w/diverter valve	\$	\$	\$	\$	\$	\$	\$

SYSTEMS	33V	35A	35U	37B	38J	38R	38T
<b>Furnace</b> 35,000 BTU, low-profile	\$	\$	\$	\$	\$	\$	\$
<b>Furnace</b> 40,000 BTU, low-profile	\$	\$	\$	\$	\$	\$	\$
<b>Generator</b> 7,000-watt, Onan Marquis Gold, gas, <b>Inverter</b> DC/AC, 600-watt, <b>Power Cord</b> 50-amp, flexible cord	0	0	0	0	0	0	0
<b>Washer/Dryer Combination</b>	0	0	0	0	0	0	0
<b>Washer/Dryer Prep</b>	\$	\$	\$	\$	\$	\$	\$

SLIDEOUTS	33V	35A	35U	37B	38J	38R	38T
<b>Slideout Room</b> (bed) 33V, 35A, 37B, 38J, bed/wardrobe 35U, 38R; wardrobe 37B w/slideroom cover	\$	\$	\$	\$	\$	\$	\$
<b>Slideout Room</b> (bed/wardrobe/ent. ctr./lounge) w/slideroom cover	\$	\$	\$	\$	\$	\$	\$
<b>Slideout Room</b> (solar/drinking) w/slideroom cover, <b>StoreMore®</b>	\$	\$	\$	\$	\$	\$	\$
<b>Slideout Room</b> (lounge/galley) w/slideroom cover, <b>StoreMore</b>	\$	\$	\$	\$	\$	\$	\$
<b>Slideout Room</b> (TV/dining) w/slideroom cover, <b>StoreMore</b>	\$	\$	\$	\$	\$	\$	\$
<b>Slideout Room</b> (galley) w/slideroom cover	\$	\$	\$	\$	\$	\$	\$
<b>Slideout Room</b> (solar/drinking/ent/ing) w/slideroom cover, <b>StoreMore</b>	\$	\$	\$	\$	\$	\$	\$

SAFETY	33V	35A	35U	37B	38J	38R	38T
<b>Assist Bar</b> interior, <b>Assist Handle</b> exterior, acrylic w/lego, <b>Bumpers</b> front & rear, <b>Detectors/Alarms</b> LP leak, smoke, carbon monoxide, <b>Fire Extinguisher</b> 10 BC, <b>Ground Fault Interrupter</b> , <b>Lights</b> high-mount brakelamp, <b>Light</b> courtesy w/wall switch, <b>Lights</b> daytime running lamps, <b>Seat Belts</b> cab, 3-point adj., <b>Window</b> escape, <b>Windshield</b> laminated safety glass	\$	\$	\$	\$	\$	\$	\$
<b>Child-Seat Tether Anchor</b>	\$	\$	\$	\$	\$	\$	\$

WARRANTY <sup>2</sup>	33V	35A	35U	37B	38J	38R	38T
<b>12-month/15,000-mile basic limited warranty<sup>3</sup>, 36-month/36,000-mile warranty on structure<sup>4</sup>, 10-year limited parts &amp; labor warranty on roof skin<sup>5</sup></b>	\$	\$	\$	\$	\$	\$	\$

- The height of each model is measured to the top of the tallest standard feature and is based on the curb weight of a typically equipped unit. The actual height of your vehicle may vary by several inches depending on chassis or equipment variations. Please contact your dealer for further information.
- Sunruser® floorplans feature a wide-body design – over 96". In making your purchase decision, you should be aware that some states restrict access on some or all state roads to 96" in body width. Before making your purchase decision, you should confirm the road usage laws in the states of interest to you.
- The load capacity of your motor home is designated by weight, not by volume, so you cannot necessarily use all available space when loading your motor home. Capacities are based on measurements prior to tank installation. Slight capacity variations can result due to installation applications.
- Capacities shown are tank manufacturer's listed water capacity (W.C.). Actual filled LP capacity is 80% of listing due to overfilling prevention device on tank.
- Actual towing capacity is dependent on your particular loading and towing circumstances which includes the GVWR, GAWR, and GCWR as well as adequate trailer brakes. Please refer to the Operator's Manual of your vehicle for further towing information.
- See separate chassis warranty details provided in Owner's Manual.
- See your dealer for complete warranty information.
- Not Available
- Standard
- Optional

Not all items available in combination. See dealer for details.

Winnebago Industries® continuing program of product improvement makes specifications, equipment, model availability, and prices subject to change without notice. Comparisons to other motor homes are based on the most recent information available.





**Built by Winnebago Industries.  
Built to last.**

Itasca motor homes are built by Winnebago Industries, the company that defined motor homes. The company that built its reputation on quality construction. The company that transformed the motor home concept into a way of life.

Today, Winnebago Industries brings that reputation for quality and its 47-year history of motor home innovation to the design and construction of every motor home. It's all a part of SuperStructure,<sup>®</sup> our exclusive system of proprietary structural components that instills each motor home with improved strength and durability.



**SOLID FOUNDATION** Steel and aluminum truss work provides a solid, flat foundation for floors and sidewalls. Winnebago Industries engineers also take special care to distribute the weight of components to ensure proper handling and stability.



**INTERLOCKING JOINTS**

The floors, sidewalls and roof are all integrally connected using interlocking joints. This creates a coach body that acts as a cohesive unit for improved strength and durability.



**E-COATING** Winnebago Industries employs an exclusive 12-stage automotive-style dip tank process to apply an advanced electrodeposition coating on critical steel components for unmatched corrosion protection.

**THERMO-PANEL<sup>®</sup> SIDEWALLS** Invented by Winnebago Industries, Thermo-Panel construction combines a fiberglass panel, high-density, block-foam insulation and aluminum support structures to create some of the most durable, lightweight sidewalls in the industry.

**FIBERGLASS ROOF** Every Itasca motor home features a one-piece fiberglass roof backed by a 10-year limited parts-and-labor roof skin warranty.

**ATTENTION TO DETAIL** Whether it's sending every coach through a high-pressure water tunnel to check for leaks or labeling each individual wire and barcoding parts to save time and frustration during service, Winnebago Industries considers every detail to ensure your Itasca motor home provides you with years of pleasure.

**STRONG AS STEEL** Appliances are secured directly to embedded steel plates for added safety. Windshields are also mounted in steel with an automotive-style sealant; lesser designs use a rubber gasket to mount the windshield in fiberglass.



1-year-old Itasca fiberglass roof



1-year-old competitor's rubber roof

**BUILT TO A HIGHER STANDARD** The Suncruiser features a crowned, one-piece fiberglass roof, backed with a 10-year limited parts-and-labor roof skin warranty. Fiberglass offers superior strength, attractiveness and durability over the rubber roofs found on many competitive models which can chalk, streak and degrade over time. Fiberglass also provides increased puncture and tear resistance.



**TAKE A TOUR** We're proud of our process, state-of-the-art facilities and the people who make Winnebago Industries number one. We invite you to visit our factory in Forest City, Iowa, for a first-hand look at the dedication and technology behind every motor home we build.



**RECOGNIZED QUALITY** The Recreation Vehicle Dealer Association annually rates RV manufacturers and awards the Quality Circle award to manufacturers who provide exceptional products, service and support. Winnebago Industries is proud to be the only manufacturer to receive this award every year since its inception.

**COMMITTED TO SERVICE** We back our motor homes with the industry's best service after the sale.

- 12-month/15,000-mile basic limited warranty
- 36-month/36,000-mile warranty on structure
- Standard 10-year limited parts-and-labor roof skin warranty
- Complimentary 24-hour roadside assistance program
- TripSaver Fast Track Parts. TripSaver guarantees that in-stock warranty parts ship directly to your dealer within 24 hours.
- National dealer service network



**WIT CLUB** Itasca owners are like family. Joining the Winnebago-Itasca Travelers is a great way to meet and travel with other Itasca enthusiasts. Members enjoy:

- Caravans and rallies
- Local and state group activities
- RV travel benefits



For Sales and Service Information Contact:



Built proudly by



NYSE listing: WGO

©2005 Winnebago Industries, Inc.

Printed in USA

Seat belts are your most important hookup. Always buckle up.