

FLEETWOOD
Driven to Explore

BOUNDER DIESEL-Floor Plans, Standard Features and Options

Bounder Diesel

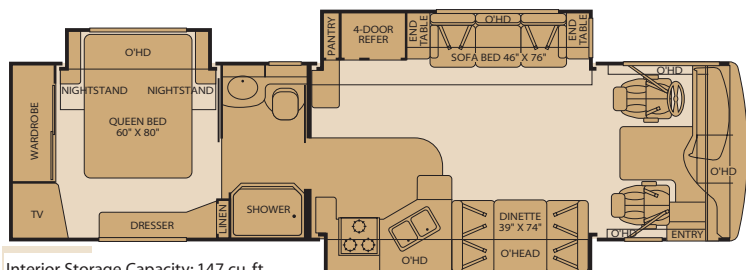


Floor Plans

34H

Triple Slide-Out

Sleeping Accommodations: 4*

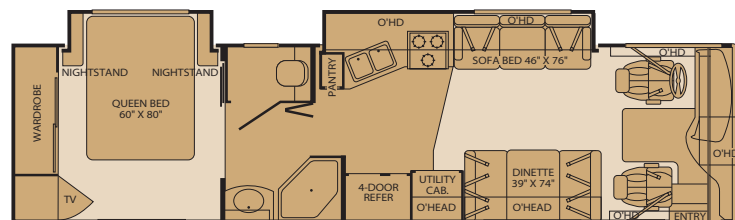


Interior Storage Capacity: 147 cu. ft.
Exterior Storage Capacity: 97 cu. ft.

34M

Double Slide-Out

Sleeping Accommodations: 4*

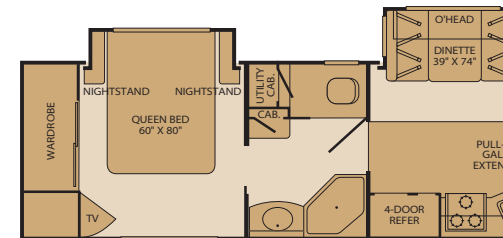


Interior Storage Capacity: 156 cu. ft.
Exterior Storage Capacity: 115 cu. ft.

37U

Double Slide-Out

Sleeping Accommodations: 4*

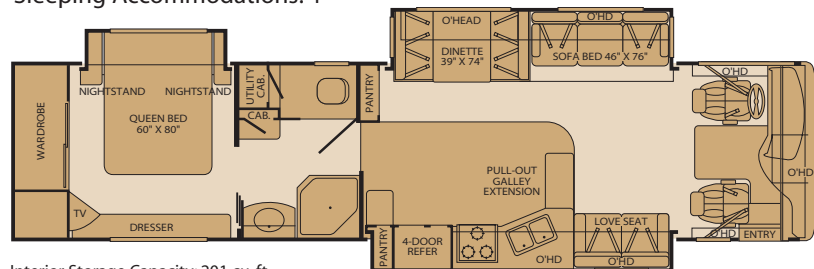


Interior Storage Capacity: 171 cu. ft.
Exterior Storage Capacity: 148 cu. ft.

38N

Triple Slide-Out

Sleeping Accommodations: 4*

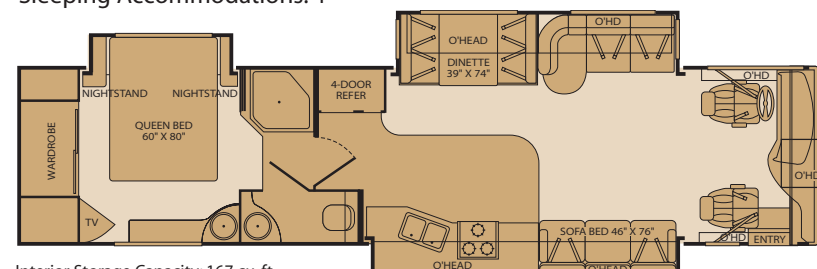


Interior Storage Capacity: 201 cu. ft.
Exterior Storage Capacity: 132 cu. ft.

38S

Triple Slide-Out

Sleeping Accommodations: 4*

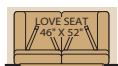


Interior Storage Capacity: 167 cu. ft.
Exterior Storage Capacity: 130 cu. ft.

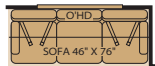
Options



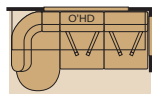
OPT. 126
WASHER/DRYER
Available on:
All floor plans



OPT. 173
ULTRALEATHER
LOVE SEAT
Available on: 37U,
38L, 38N



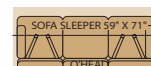
OPT. 174
ULTRALEATHER SOFA
Available on: 34H, 34M,
37U, 38L, 38N, 39Z



OPT. 175
ULTRALEATHER
J-LOUNGE
Available on: 38S



OPT. 200 ULTRALEATHER
SOFA SLEEPER
W/AIR MATTRESS
Available on: 34H, 37U, 38L,
38N, 38S, 39Z



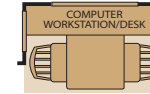
OPT. 201
ULTRALEATHER
SOFA SLEEPER W/AIR
MATTRESS
Available on: 38S



OPT. 491
ULTRALEATHER
RECLINER
Available on:
37U, 39Z



OPT. 497
PASSENGER SEAT
W/FOOTREST
Available on: 34H,
34M, 37U, 38N, 39Z



OPT. 700 COMPUTER
WORKSTATION
Available on: 37U, 38L,
38N, 38S, 39Z



OPT. 804
ULTRALEATHER
SOFA BED
Available on: 38S

Seatbelt configuration may vary depending on options chosen.

*Sleeping

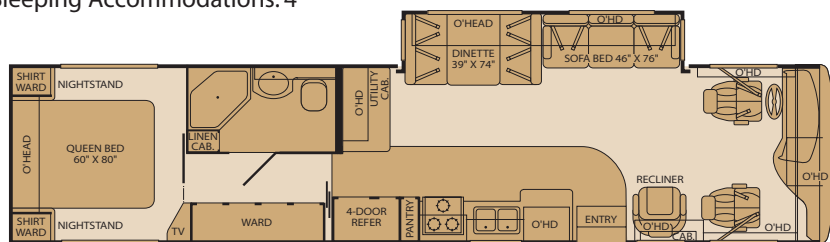


38L Quad Slide-Out Sleeping Accommodations: 4*



Interior Storage Capacity: 186 cu. ft.
Exterior Storage Capacity: 132 cu. ft.

39Z Single Slide-Out Sleeping Accommodations: 4*



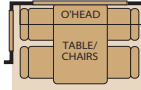
Interior Storage Capacity: 184 cu. ft.
Exterior Storage Capacity: 124 cu. ft.



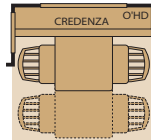
OPT. 804
ULTRALEATHER
SOFA BED
Available on: 38S



OPT. 821
RECLINER W/TABLE
Available on: 38L, 38N



OPT. 832
FREE-STANDING
DINETTE
Available on: 34M, 37U,
38L, 38N, 38S, 39Z



OPT. 833 FREE-STANDING
DINETTE W/CREDENZA
Available on: All floor plans



OPT. 855 QUEEN BED
W/AIR MATTRESS
Available on: All floor plans



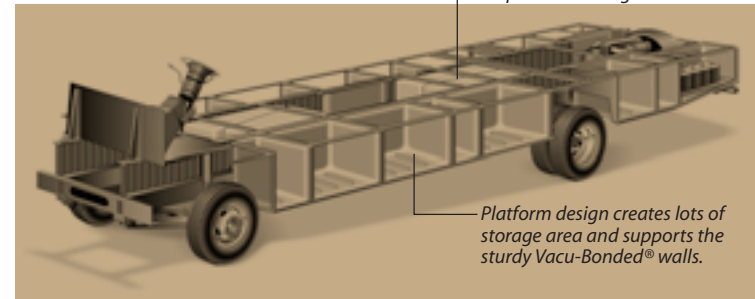
OPT. 894 BEDROOM DRESSER
Available on: 34M, 37U

POWER PLATFORM CONSTRUCTION

Fleetwood's patented Power Platform begins with two 10-in. steel I-beams welded lengthwise to the chassis. From the beams, steel outriggers extend outward. Together, they create a basement for fluid tanks and storage while supporting the floor, walls and roof with a rigid metal frame. This complements the chassis to make it even stronger.

Holding tanks are positioned in the bottom center of the platform to enhance vehicle stability.

Holding tanks are enclosed between the upper and lower basement floors. This allows them to be heated to prevent freezing in cold weather.



Platform design creates lots of storage area and supports the sturdy Vacu-Bonded® walls.

Setting The Standard In Motor Home Quality.

Fleetwood® prototypes are exposed to thousands of miles of durability testing. Those components that don't survive are redesigned until they do. This sets our standard in safety and durability.



Inter-locking Ceiling-to-Sidewall Connection

Fleetwood's patented Power Platform supports the body with a rigid frame that reinforces the chassis to make it even stronger. This allows Fleetwood to offer quad slide-outs.



Inter-locking Floor-to-Sidewall Connection

For each outer wall, Fleetwood uses one seamless, solid piece of its exclusive Tuff-Coat® fiberglass composite. It resists UV rays, cracks and impacts. Our products look newer longer and that's a big plus at resale time.

To assure a strong, weather-resistant structure, Fleetwood Vacu-bonds® all sidewalls, floors and ceilings to a durable aluminum or steel frame. The Vacu-bond® process is unmatched by many competitors.



Vacu-Bond® Sidewall Construction

Fleetwood's sinks and shelves are designed to handle full-size kitchenware. Few competitors can say the same.

Drawings are for illustrative purpose only to highlight aspects of motor home construction. Actual motor home design depends on model and is subject to change.

*Sleeping accommodations are based on designed sleeping areas and may be greater than Sleeping Capacity Weight Rating (SCWR) found on the Cargo Carrying Capacity label located in each RV. Sleeping accommodations are based on standard layout. Optional furniture may increase or decrease sleeping accommodations.

Standard Features

Interior

THROUGHOUT

- **84" Interior Ceiling Height**
- **Dual Roof-Mounted A/C High Efficiency w/Solar Panel & Chill Grill on Front A/C**
- **Whole Coach Water Filtration System**
- 10-Gallon Quick-Recovery Water Heater w/Direct Spark Ignition (Gas/Electric)
- 20,000/25,000 BTU Dual Furnace
- Adjustable Cabinet Shelves (Select Cabinets)

DRIVER CONVENIENCE

- **Auto A/C Heater Combo**
- **Driver/Front Passenger Ultraleather™ Captain's Chairs w/Reclining Back/Slide Controls w/Power Driver Seat**
- **Soft-Surface Automotive Dash w/Snack Tray & Convenient**

LIVING ROOM

- 27" Flat Screen TV
- Beveled Decor Mirrors
- Flexsteel® Residential Seat Styling
- Free-Standing Swivel Recliner

GALLEY

- **Solid Surface Countertop, Sink & Range Covers**
- **Under Galley Shelving & Wastebasket**
- 22" 3-Burner, High-Output Cooktop
- Cabinet Toe Kicks

BEDROOM

- **Ventilated Rear Wardrobe w/Cedar Lining, Carpeted Floor & Wire Organizer**
- 20" Flat Screen TV w/Swivel

BATHROOM

- **Cabinet Toe Kicks**
- A/C Venting
- Assist Handle
- Brushed Nickel Bath Accessories

SAFETY/CONVENIENCE

- Carbon Monoxide Detector/Alarm
- Fire Extinguisher

- Brushed Nickel Cabinet Hardware
- Ceiling-Ducted Roof A/C
- Crown Molding
- Day/Night Pleated Shades
- Demand Water Pump w/Filter
- Large Overhead Cabinets w/Raised-Panel Doors
- Plush Wall-to-Wall Carpet w/Carpet Pad
- Radius-Corner Cabinetry
- Solar Battery Charger
- Solid Surface Countertops
- Vinyl Flooring at Entry
- Wall-Switches (Includes Switches for Ceiling Lights & Vents)
- Water Heater Bypass
- Window Coverings
- Wood Drawers w/Deluxe Roller Bearing, Full-Extension Drawer Guides & Transit-Ship Locks
- Wood-Finish Heat Air-Intake Panel
- Woven Jacquard Feature Fabrics

Service Door

- Adjustable 3-Point Seat Belts at Driver & Front Passenger Seats
- AM/FM Radio w/CD/Cassette Player
- Auxiliary Start Circuit
- Battery Shut-Off Switch
- CB Radio Ready

- (37U & 39Z)
- Satellite Dish Ready
- Telephone Jack
- TV Antenna

- Convection Microwave Oven
- Fan-Tastic® Power Roof Vent w/Wall Switch
- Large, Porcelain Double Sink
- Norcold® 12 cu. ft. Refrigerator
- Roll-out Countertop (37U & 38N)

- Bedsread w/Decor Pillows
- Headboard (39Z)
- Innerspring Mattress
- Rear Speakers

- Fan-Tastic® Power Roof Vent w/Wall Switch
- Glass Shower w/Skylight and Low Threshold

- Propane Detector/Alarm
- RV System Monitor Panel

- Cruise Control
- Dash Fans
- Multi-Function Sun Visor
- Radio Switch—Main/Auxiliary Power
- Tilt/Telescoping Steering Wheel

- VCR/DVD Combination
- Video Switch Box TV/VCR/DVD

- Single-Lever Faucet
- Soap Dispenser
- Vinyl Flooring
- Window Over Sink

- Remote Generator Start
- Second Telephone Jack

- Make-up Lights
- Porcelain Toilet w/Water Saver
- Vinyl Flooring

- Smoke Detector/Alarm

Fleetwood Advantages

- **Complete TuffPEX® Plumbing System**
- **Energy Management System (EMS) w/Soft Start**

- **Vacu-Bond® Upper/Lower Floors**
- **Vacu-Bond® Walls w/Smooth High-Gloss Exterior Tuff-Coat® Fiberglass**

Fleetwood Exclusive

- **Strong Power Platform Construction**

Exterior

THROUGHOUT

- **4-point Automatic Electric Levelers**
- **Choice of Two Colorway Graphics**
- **Patio & Entry Door Awning**
- 120V/12V AC/DC Converter
- 120V/12V Wire Raceways
- 2000 Watt Inverter w/Remote
- 50-Amp Service

AUTOMOTIVE

- **300-HP Caterpillar® Engine w/Rear-Mounted Radiator**
- **Dual Fuel Fill (One on Each Side)**
- **Freightliner® Chassis**
- 10,000-Lb. Weight-Distributing Hitch Receiver w/7-Point Electrical Hookup†
- Air Suspension

SAFETY/CONVENIENCE

- **Power Entry Step**
- **Radius Entry Door w/Deadbolt Latch (Keyless-Entry Ready)**
- 20' Sewer Hose
- Central Electrical Panel

STORAGE

- **Insulated Aluminum Luggage Doors w/Single Paddle Metal Latches & Stainless-Steel Hinges**
- Aluminum Luggage Door Seal Frames
- Central Utility Compartment

BODY STRUCTURE

- **Aluminum Interlocking Floor/Wall/Ceiling Framing**

- 5.5kW Onan® Quiet Diesel Generator
- Aerodynamic Bus Styling
- Awning Rail/Drip Molding (Both Sides)
- Dual Pane Windows w/Screens
- Fiberglass Front & Rear Bumpers & Wheel Wells

- Denso® Windshield Wipers w/Wet Arm
- Fog Lamps
- Halogen Headlamps
- Large Windshield
- Mud Flaps
- Rear-Vision Camera
- Stainless-Steel Wheel Simulators

- Dual Battery Charge Control
- Four 6V/Deep-Cycle House Batteries
- Park Cable Receptacle
- Porch Light (Doorside)
- Roof Ladder

- Continuous One-Piece Compartment Bulb Seal
- Gas-Lift Strut Supports (Two-Stage Under Slide Box)
- Hidden, Stainless-Steel Latch Rods
- Lighted Luggage Compartments

- **Royal Tuff-Ply Radius Roof w/Ducted A/C**
- Heated Water & Holding

- Fiberglass Front/Rear Caps w/High-Mounted Taillights
- Patio Receptacles
- Remote/Heated Exterior Rear-View Mirrors
- Water Pump Switch (3 Locations)

- Tire Valve Extenders
- Underhood Utility Light

† The chassis manufacturer recommends the installation of a supplemental brake control system to activate the brakes on the vehicle or trailer you are towing. Hitch receiver ratings expressed are maximum for the hitch receiver installed and may require the purchase of additional equipment that is dependant on the weight of the towed load. Consult with hitch receiver manufacturer for further information.

- Side-Opening, Engine-Access Door
- Toilet Tank San-T-Flush™ System
- Utility Compartment w/Exterior Shower

- Rotomolded Polyethylene Luggage Compartments
- Spare Tire Compartment (Spare Tire Not Included)

- Tank Compartments
- Paco® Beam System

Options

THROUGHOUT (EXTERIOR)

- 7.5kW Onan® Quiet Diesel Generator
- Auto-Locating Satellite Dish
- CSA (Canadian Specs) Electrical Package-Freightliner®
- Full-Body Paint
- Heat Pumps

THROUGHOUT (INTERIOR)

- Washer/Dryer
- Water Heater 16 Gallon Output

GALLEY

- 22" 3-Burner, High-Output Range w/Oven
- Free-Standing Table & Chairs

LIVING ROOM

- Home Theater Sound System
- Recliner w/Table (38L & 38N)
- Sofa Sleeper w/Air Mattress (34H, 37U, 38L, 38N, 38S & 39Z)
- Ultraleather™ J-Lounge (38S)
- Ultraleather™ Love Seat (37U, 38L & 38N)
- Ultraleather™ Sofa
- Ultraleather™ Swivel Recliner (37U & 39Z)

BEDROOM

- Restonic®, Rest-On-Air Dual Control Mattress

DRIVER CONVENIENCE

- Power Sun Visors
- Stereo AM/FM w/6-Disc CD Player with Sirius® Satellite Radio (w/6 Month Subscription)
- Ultraleather™ Driver & Passenger Seats, Power Driver Seat, Power Passenger Seat w/Power Foot Rest

AUTOMOTIVE

- Electric Awning
- Front Protective Mask
- Remote Keyless Entry

*Bold Denotes Fleetwood's Key Features

Weights and Measurements

FREIGHTLINER® CHASSIS	34H	34M	37U	38L	38N	38S	39Z
Engine Displacement (Liters)	7.2	7.2	7.2	7.2	7.2	7.2	7.2
Wheelbase (Inches)	208	208	242	252	252	252	252
GVWR (lbs) ¹	31,000	31,000	31,000	31,000	31,000	31,000	31,000
Front GAWR (lbs) ²	12,000	12,000	12,000	12,000	12,000	12,000	12,000
Rear GAWR (lbs) ²	19,000	19,000	19,000	19,000	19,000	19,000	19,000
Base Weight (lbs) ³	20,450	20,050	21,555	22,029	21,724	21,724	20,775
GCWR (lbs) ⁴	41,000	41,000	41,000	41,000	41,000	41,000	41,000
Hitch Rating Weight (lbs) [†]	10,000	10,000	10,000	10,000	10,000	10,000	10,000
Tongue Weight (lbs) [†]	1,000	1,000	1,000	1,000	1,000	1,000	1,000
Fuel Capacity (gal)	90	90	90	90	90	90	90

DIMENSIONS AND CAPACITIES							
Overall Length ⁵	34' 8"	34' 8"	37' 6"	38' 4"	38' 4"	38' 4"	39' 0"
Overall Height (with A/C)	12' 8"	12' 8"	12' 8"	12' 8"	12' 8"	12' 8"	12' 8"
Overall Width (maximum) ^{6,7}	102"	102"	102"	102"	102"	102"	102"
Interior Height (maximum)	84"	84"	84"	84"	84"	84"	84"
Interior Width (maximum)	96"	96"	96"	96"	96"	96"	96"
Fresh Water Holding Tank (gal)	86	86	86	86	86	86	86
Grey Water Holding Tank (gal)	50	50	50	50	50	50	50
Black Water Holding Tank (gal)	50	50	50	50	50	50	50
Appliance Propane Tank (gal) (WC) ⁸	25	25	25	25	25	25	25
Water Heater Tank (gal)	10	10	10	10	10	10	10

Liquid Weight Reference: Water (gal) = (8.3 lbs/3.8 kgs) Fuel (gal) = (7.1 lbs/3.2 kgs) Propane (gal) = (4.2 lbs/1.9 kgs)

Metric Conversion: Multiply pounds x 0.453 to obtain kilograms. Multiply gallons x 3.785 to obtain liters.

CHASSIS

Frame: Freightliner® XC-Series	Transmission: Allison® 3000 MH, 6-Speed w/Electronic Shifter
Engine: Cat® C7 300 HP	Alternator Amps: 160-Amp Delco
Torque: 860 lb-ft @ 1440 RPM	Tires: Goodyear® 275/70R 22.5H

- GVWR (Gross Vehicle Weight Rating) is the maximum permissible weight of this fully loaded motor home. The GVWR is equal to or greater than the sum of the unloaded vehicle weight plus the cargo carrying capacity.
 - GAWR (Gross Axle Weight Rating) is the maximum permissible loaded weight a specific axle is designed to carry.
 - Base Weight is the estimated weight of the motor home without fuel, options, water, cargo or passengers.
 - GCWR (Gross Combined Weight Rating) is the value specified by the motor home manufacturer as the maximum allowable loaded weight of this motor home with its towed vehicle. Towing and braking capacities may be different. Refer to Fleetwood and chassis manufacturer's manuals for complete information.
 - Length taken from front bumper to rear bumper (excludes accessories).
 - Excludes safety equipment and awnings.
 - Motor homes feature a body-width over 96" which will restrict your access to certain roads. Before purchasing, you should research any state and/or province road laws which may affect your usage.
 - Tank manufacturer's listed water capacity (WC). Actual propane capacity is 80% of water listing as required by the safety code.
- [†] The chassis manufacturer recommends the installation of a supplemental brake control system to activate the brakes on the vehicle or trailer you are towing. Hitch receiver ratings expressed are maximum for the hitch receiver installed and may require the purchase of additional equipment that is dependant on the weight of the towed load. Consult with hitch receiver manufacturer for further information.

IMPORTANT — PLEASE READ: Product information, photography and illustrations included in this publication were as accurate as possible at the time of printing. For further product information and changes, please visit our website at www.fleetwoodrv.com or contact your local Fleetwood dealer. Prices, materials, design and specifications are subject to change without notice. All weights, fuel, liquid capacities and dimensions are approximate. Fleetwood has designed its recreational vehicles to provide a variety of uses for its customers. Each vehicle features optimal seating, sleeping, storage and fluid capacities. The user is responsible for selecting the proper combination of loads (i.e. occupants, equipment, fluids, cargo, etc.) to ensure that the vehicle's capacities are not exceeded.

What Drives You?

Maybe it's feeling like you're the only one on Earth. Perhaps it's the unique sense of closeness with the great outdoors. Or, it might be the joy that comes from spending quality time with family and friends. Whatever the reason, we know that you have a strong drive to experience everything that comes with spending time on the road. And for more than 50 years, we've shared that passion with you. Because we're RV enthusiasts ourselves, you can see our passion in the vehicles we design and build. Own a Fleetwood, and you'll feel like you're not just traveling, but embarking on an experience unlike any other. Set your own course for adventure and get out there and explore the world around you. Once you do, you'll see what it is that drives us — it's you.

RV OWNERCARE* is a limited one-year/15,000-mile coach warranty and three-year/50,000-mile structural warranty, whichever occurs first, and it is fully transferable for the first 12 months. RV OWNERCARE is one of the RV industry's most comprehensive programs and includes systems, appliances, components and construction, with no deductible and no service charge. RV OWNERCARE coverage is provided from a company that will be around in the future to service your needs. See your nearest Fleetwood dealer for a full explanation of benefits and restrictions.

FLEETWOOD TRAVELCADE CLUB As a Fleetwood owner, you're eligible to become a member of our owners' group, Fleetwood Travelcade Club. It's a perfect way to meet other Fleetwood owners who love to travel across America and share in the RV lifestyle. Call (877) 577-2560 or visit www.fleetwood.com/clubs to learn more and join the fun! For Bounder specific club information visit: Bounders of America at www.bounder.org or Bounders United at www.bounder.net.



www.fleetwoodrv.com

*For complete info see your Fleetwood dealer. ©2005. Fleetwood Enterprises, Inc.
Printed in the USA. Inventory control number BDRD06F2 10/05.

FLEETWOODRV.COM To locate a dealer near you, visit our website or call 1-800-444-4905. We can also be contacted at Fleetwood Customer Relations, P.O. Box 7638, Riverside, CA 92513-7638.

IMPORTANT—PLEASE READ Product information, photography and illustrations included in this publication were as accurate as possible at the time of printing. For further product information and changes, please visit our website at www.fleetwoodrv.com or contact your local Fleetwood dealer. Prices, materials, design and specifications are subject to change without notice. All weights, fuel, liquid capacities and dimensions are approximate. Fleetwood has designed its recreational vehicles to provide a variety of uses for customers. Each vehicle features optimal seating, sleeping, storage and fluid capacities. The user is responsible for selecting the proper combination of loads (i.e.: occupants, equipment, fluids, cargo, etc.) to ensure that the vehicle's capacities are not exceeded.

Your local Fleetwood dealer is:

