

AMERICAN COACH 2007

It's when two paths meet that the adventure truly begins.

THE OFFICIAL LUXURY COACH

*American
Coach*

OF THE AMERICAN ROAD



*Your romance with
travel is about to heat up.*

*O*ut on the road, the thrill of freedom runs through your veins. You eagerly anticipate the unfolding of each day. And nothing can make your spirit soar like American Eagle, the coach that takes luxury to its ultimate level.



American Eagle 42L shown in Coconut
Crème décor with Crème Brulee Glaze
Maple wood cabinetry.



*Proof that elegance and
adventure are highly compatible.*



Your journeys are even more unforgettable when you travel in high style. Opulent in every detail, American Eagle turns heads all along your trail. It's understandable – after all, you're the proud owner of many people's wildest dreams.

EAGLE 2007



*Stoke your passion for life.
And satisfy your love of comfort.*



American Eagle lets you follow your passions
and pursue your hobbies, wherever they may
lead. At the end of the day, you can come
home to your own private Shangri-la where
everything is just the way you like it.



*From truffles to toast,
everything's a sensory delight.*

In a sumptuous galley like this, all your senses are rewarded. Relish the smell of freshly brewing coffee. The sparkle from the glossy porcelain tile floor. The smooth feel of the stone-look countertops. And of course, the taste of your home-made cooking. But what wouldn't taste good in this incredible setting?



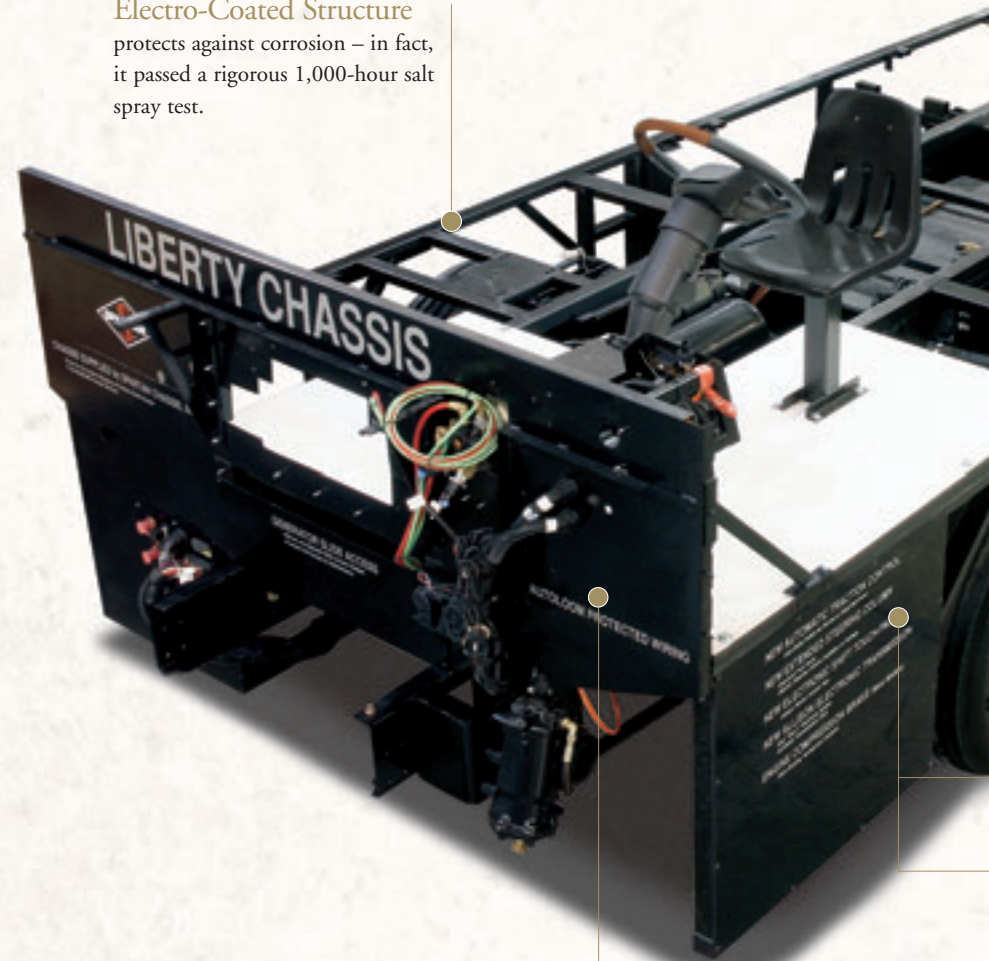


Smooth Operator

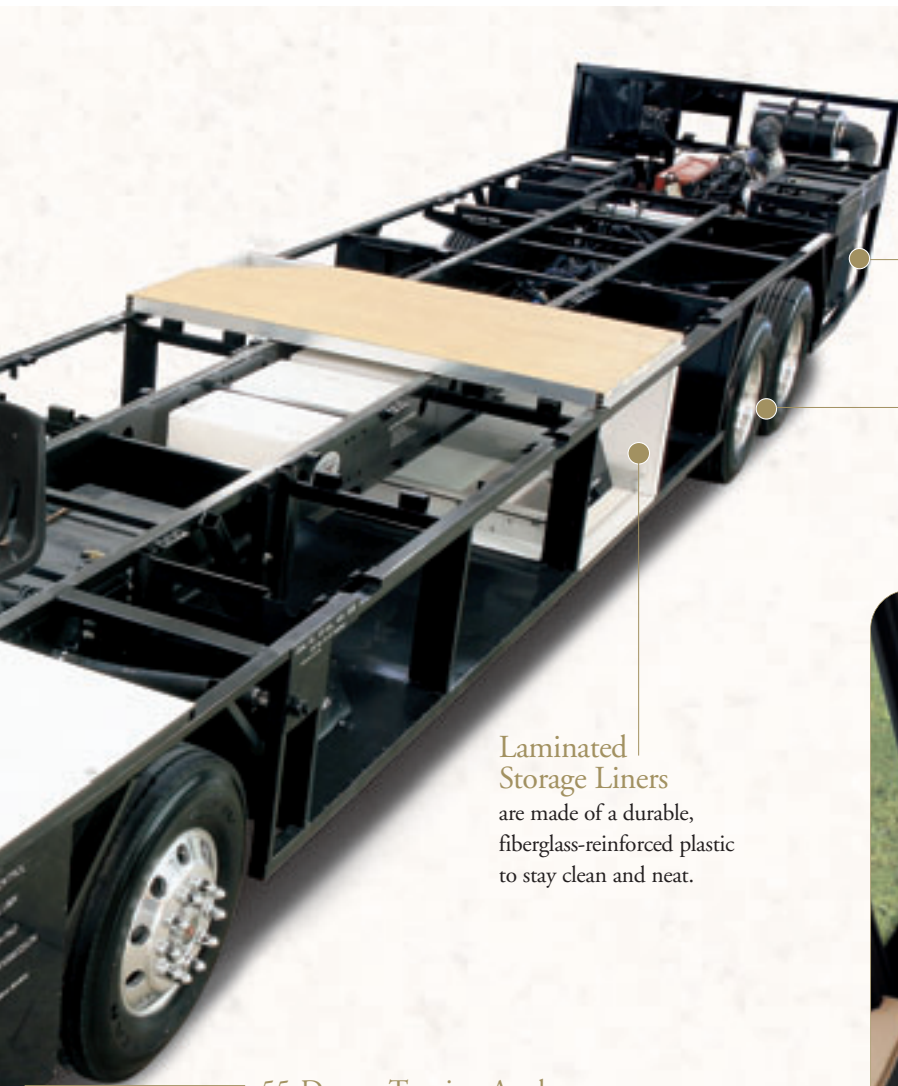
Thanks to our exclusive Liberty Chassis, American Coach is the best riding luxury coach family, hands-down. In fact, we placed a nickel, on end, on one of the frame rails while the engine was running – and the nickel did not fall over on its side. That's how little vibration was created. The secret is the strong, rigid frame that strengthens the integrity of the driving platform. Complemented by a high-performance diesel engine, it creates an extremely smooth driving experience. It's been confirmed by President Jefferson himself.



Electro-Coated Structure protects against corrosion – in fact, it passed a rigorous 1,000-hour salt spray test.



All Steel Structure minimizes flex and contributes to a lower center of gravity that enhances the driving experience.



Huge 15,000 lbs. Towing Capacity
easily tows your favorite vehicle.

Automatic Traction Control (ATC)
improves traction if the coach is on a slippery surface.

Laminated
Storage Liners
are made of a durable,
fiberglass-reinforced plastic
to stay clean and neat.

55-Degree Turning Angle
allows you to turn more sharply.

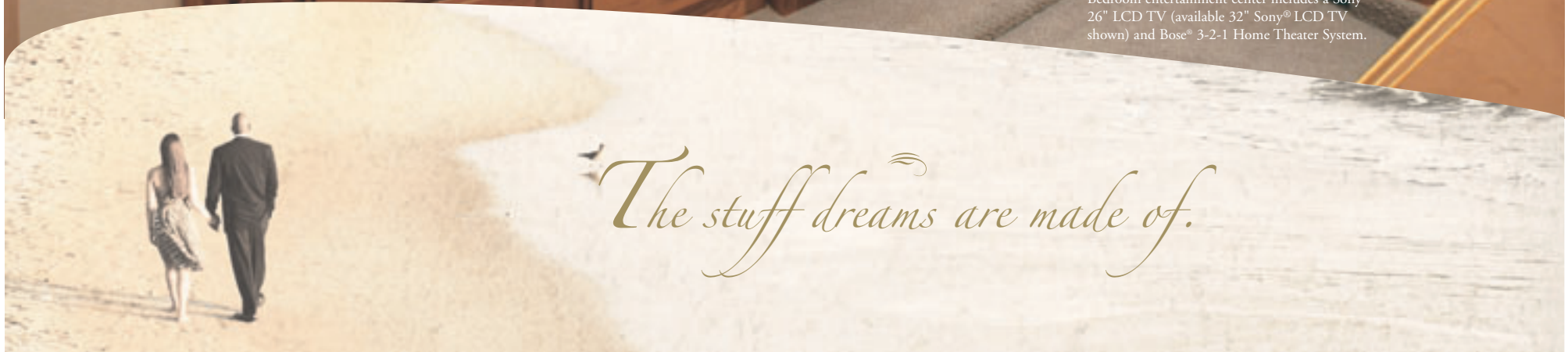
Independent
Front Suspension
handles those uneven road
surfaces smoothly.

The Driver's Area surrounds you with a cockpit full of high-tech wizardry including a Visteon® six-CD player and AM/FM radio, and a Garmin Navigation System is available.





Bedroom entertainment center includes a Sony® 26" LCD TV (available 32" Sony® LCD TV shown) and Bose® 3-2-1 Home Theater System.



The stuff dreams are made of.



American Eagle 42V shown below in Spicy Nutmeg décor with Windsor Birch wood cabinetry.

EAGLE 2007

Think of the bedroom suite as your private hideaway, a nest feathered in luxury. Surrounded by sophisticated beauty and fabulous amenities, you'll look forward to spending eight hours here. Or more.

*The romance of
a hotel bathroom.*

The bathroom suite offers the
decadent feel of a five-star hotel,
from the high-gloss countertops to
the etched glass shower. And you
don't have to check out at noon.



EXTERIOR GRAPHICS*

STANDARD GRAPHICS



Cabernet Gold



Raceway Red



Bahama Beige

WINGSPAN GRAPHICS



White Shadow



Bluestone



Onyx

* Not all exterior colors are shown. See your American Coach dealer or visit our website at www.AmericanCoach.com to view all graphic and color choices.

Exterior Graphics / Interior Décor

CABINERY HARDWARE

Cabinetry hardware has been carefully coordinated with specific interior décor schemes for a designer look.



WOOD SAMPLES



Crème Brulee Glaze Maple



Regency Cherry



Natural Cherry

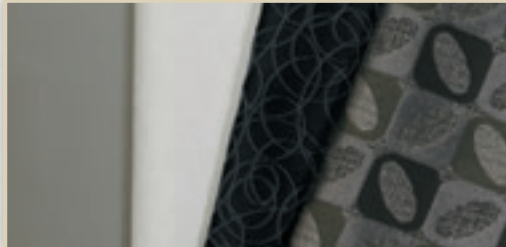


Clear White Maple



Windsor Birch

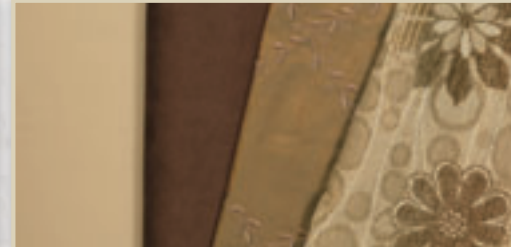
FABRIC DÉCORS



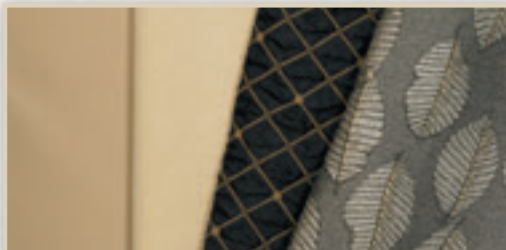
Silver Slate



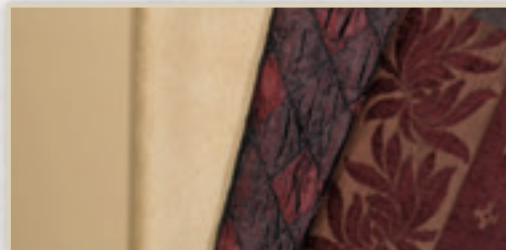
Brushed Hazel



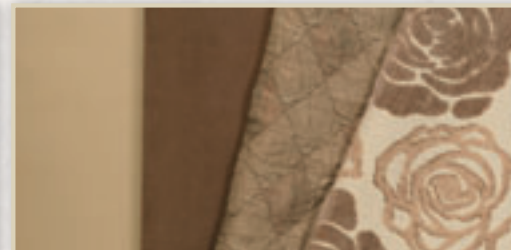
Spicy Nutmeg



Midnight Onyx



Sovereign Port



Coconut Cream

Weights and Measurements

WEIGHTS	40J	42F	42L	42R	42V	45E	45H
GVWR (lbs)¹	34,600	44,600	44,600	44,600	44,600	44,600	44,600
Front GAWR (lbs)²	14,600	14,600	14,600	14,600	14,600	14,600	14,600
Rear GAWR (lbs)²	20,000	20,000	20,000	20,000	20,000	20,000	20,000
Tag Axle GAWR (lbs)²	N/A	10,000	10,000	10,000	10,000	10,000	10,000
Base Weight (400/500-525)(lbs)³	28,900	33,600/34,600	33,200/34,200	33,400/34,400	33,400/34,400	35,800	35,800
GCWR (lbs)⁴	49,600	59,600	59,600	59,600	59,600	59,600	59,600
Hitch Rating Weight (lbs)¹	15,000	15,000	15,000	15,000	15,000	15,000	15,000
Tongue Weight (lbs)¹	1,500	1,500	1,500	1,500	1,500	1,500	1,500

DIMENSIONS AND CAPACITIES

Wheelbase	266"	302"	302"	302"	302"	304"	304"
Overall Length⁵	39' 11.5"	42' 11.5"	42' 11.5"	42' 11.5"	42' 11.5"	44' 11.5"	44' 11.5"
Overall Height (W/AC)	12' 11.5"	12' 11.5"	12' 11.5"	12' 11.5"	12' 11.5"	12' 11.5"	12' 11.5"
Overall Width (maximum)^{6,7}	102"	102"	102"	102"	102"	102"	102"
Interior Height (maximum)	82"	82"	82"	82"	82"	82"	82"
Interior Width (maximum)	96"	96"	96"	96"	96"	96"	96"
Fresh Water Holding Tank (gal)	95	120	120	120	120	120	120
Grey Water Holding Tank (gal)	70	70	70	60	60	100	100
Black Water Holding Tank (gal)	40	40	40	40	40	60	60
Appliance Propane Tank (gal) (WC)⁸	38	38	38	38	38	38	38
Water Heater Tank (gal)	10	10	10	10	10	10	10
Fuel Capacity (gal)	125	150	150	150	150	150	150
STD Carefree Patio Awning Length	19' 6"	17' 6"	20' 6"	20' 6"	20' 6"	19' 6"	19' 6"
OPT Girard Patio Awning Length	13' 4"	12' 5"	13' 4"	13' 4"	13' 4"	13' 4"	13' 4"

Liquid Weight Reference: Water (gal) = (8.3 lbs/3.8 kgs) Fuel (gal) = (7.1 lbs/3.2 kgs) Propane (gal) = (4.2 lbs/1.9 kgs)

Metric Conversion: Multiply pounds x 0.453 to obtain kilograms. Multiply gallons x 3.785 to obtain liters. Multiply liters x 61 to obtain cubic inches.

CHASSIS - CUMMINS® 400

Frame: Liberty Chassis

Engine: ISL 400 HP, 8.8L

Torque: 1200 lb-ft @ 1300 RPM

Transmission: Allison® 3000 MH, 6 Speed w/Electronic Shifter

Alternator Amps: 200 Amp, Leece Neville

Tires: 295/80R 22.5 Goodyear® Radial

CHASSIS - CUMMINS® 500/CAT® 525

Frame: Liberty Chassis

Engine: ISM 500 HP, 11.0L / C13 525 HP, 12.5L

Torque: 1550 lb-ft @ 1200 RPM / 1650 lb-ft @ 1200 RPM

Transmission: Allison® 3000 MH, 6 Speed w/Electronic Shifter

Alternator Amps: 200 Amp Leece Neville

Tires: 295/80R 22.5 H Goodyear® Radial

- GVWR (Gross Vehicle Weight Rating) is the maximum permissible weight of this fully loaded motor home. The GVWR is equal to or greater than the sum of the (UVW) unloaded vehicle weight plus the (CCC) cargo carrying capacity*.
- GAWR (Gross Axle Weight Rating) is the maximum permissible loaded weight a specific axle is designed to carry.
- Base Weight is the estimated weight of the motor home without fuel, options, water, cargo or passengers.
- GCWR (Gross Combined Weight Rating) is the value specified by the motor home manufacturer as the maximum allowable loaded weight of this motor home with its towed vehicle. Towing and braking capacities may be different. Refer to American Coach and chassis manufacturer's manuals for complete information.
- Length taken from front bumper to rear bumper (excludes accessories).
- Excludes safety equipment and awnings.
- Motor homes feature a body-width over 96" which will restrict your access to certain roads. Before purchasing, you should research any state and/or province road laws which may affect your usage.
- Tank manufacturer's listed water capacity (WC). Actual propane capacity is 80% of water listing as required by the safety code.

N/A = Not Applicable.

*UVW and CCC are found on the cargo carrying capacity label in each RV.

† The chassis manufacturer recommends the installation of a supplemental brake control system to activate the brakes on the vehicle or trailer you are towing. Hitch receiver ratings expressed are maximum for the hitch receiver installed and may require the purchase of additional equipment that is dependent on the weight of the towed load. Consult with hitch receiver manufacturer for further information.

IMPORTANT — PLEASE READ: Product information, photography and illustrations included in this publication were as accurate as possible at the time of printing. For further product information and changes, please visit our website at www.AmericanCoach.com or contact your local American Coach dealer. Prices, materials, design and specifications are subject to change without notice. All weights, fuel, liquid capacities and dimensions are approximate. American Coach has designed its recreational vehicles to provide a variety of uses for its customers. Each vehicle features optimal seating, sleeping, storage and fluid capacities. The user is responsible for selecting the proper combination of loads (i.e. occupants, equipment, fluids, cargo, etc.) to ensure that the vehicle's capacities are not exceeded.

Standard & Optional Features | INTERIOR AMENITIES

GENERAL AMENITIES

- Hand Laid Wallpaper
- Decorative Throw Pillows
- Masland® Carpeting
- Decorative Wood Window Treatments
- Fan-Tastic® Rain Sensor Power Roof Vents w/3-Speed Fan (3)
- Interior MultiPlex Switches
- TV Cable Ready
- Solid Wood Face Framed Cabinetry and Moldings
- Lined Cabinet Interior Bottoms & Shelves
- Decorative Ceiling and Air Plenum
- Flush Bolt Latch Decorative Hardware on Pocket Doors
- Polished Porcelain Tile Floor with Décor Accents at Entry, Galley and Bathroom

- OPTIONAL**
- 5 Wood Choices with 6 Fabric Decors (No Charge)
 - Custom Interior Request
 - Factory V.I.P. Delivery

DRIVER CONVENIENCE

- 6-Way Power Driver Seat with Heat, Power Lumbar
- 6-Way Power Passenger Seat with Heat, Power Lumbar and Electric Footrest
- Sony® Color Rear View System, 16:9 Display and Camera, One-Way Audio
- Side View Cameras
- Cruise Control
- I.C.C. Light Switch
- Smart Wheel w/Leather & Burl Wood Trim
- Tilt/Telescoping Steering Wheel
- Top Mounted Intermittent Windshield Wiper System with Wet Arm
- Solid Surface in Dash Driver and Passenger Drink Drink Holder
- Driver Side Pull Down Shade
- Power Driver Window
- One Piece Windshield Bonded to Steel
- Full Coverage Power Sun Visors
- Built in Dash Storage Cabinetry with Snack Tray
- Driver and Passenger Map Lights
- Visteon® AM/FM CD-6 Radio In Dash w/Sirius® Satellite Radio (Includes 6-Month Subscription)
- Xenon High Intensity Head Lamps
- Denso® Dash Climate Control System
- Adjustable Brake & Throttle Pedals
- Compass & Exterior Temperature Gauge
- Back Lit Automotive Dash with Full Instrumentation
- Tag Axle Dump Switch (Tag Axle Models)
- Keyless Entry Door Access w/Key Fob
- Auxiliary Fog/Driving Lamps

- Auxiliary Start Switch
- CB Radio Ready (Power & Antenna)
- Hadley® Air Horns
- Low Level Washer Fluid Indicator
- Multiple Auxiliary 12 Volt Dash Receptacles
- Remote Auxiliary Start Switch

- OPTIONAL**
- Garmin® Navigation System
 - 6-Way " Spacious" Power Passenger Seat with Heat, Power Lumbar and Electric Footrest
 - Vorad, Vehicle On Board Radar with Always Alert, SmartCruise and Blind Spotter Collision Avoidance System
 - Trip Tek Trip Computer / Chassis Monitoring System

LIVING ROOM

- Hydraulic Step Well Cover
- Entry Step Switch at Entry Wall
- Lighted Step Well Area
- Large Passenger Window
- Windshield Privacy Curtain
- 12V Halogen Ceiling Lighting
- 12V Halogen Reading Lights
- Centralized Audio-Electronics
- Day/Night Pleated Shades
- Hardwood Front TV Overhead Cabinetry
- Raised Panel Cabinet Doors
- Dinette Storage and Decorative Free Standing Chairs (2 Folding Style Guest Chairs)
- Centralized Command Center

- Outlet & Telephone Jack
- Automatic Generator Start System
- Inverter and Battery Monitor

- OPTIONAL**
- Full Tile Polished Porcelain Floor with Décor Accents (Select Models)

GALLEY

- No Drip Edge on Countertop
- Solid Surface Galley Top, Range and Sink Covers
- Solid Surface Dinette Table, Slide Out Extension, 4 Decorative Chairs
- Solid Surface 50/50 Double Bowl Galley Sink
- Recessed 2 Burner Cook Top
- Solid Hardwood Drawers, Dovetail Joints
- Roller Bearing Drawer Guides, Full Extension
- Adjustable Shelves
- Cabinet Storage for Sink & Range Covers Select Floor Plans
- 12V Fluorescent Ceiling Lighting
- Micro Mini Blind
- Porcelain Tile Backsplash with Mosaic Accent Glass Insert
- Task Halogen Lighting

- High Rise Galley Faucet w/Pullout Sprayer
- Silverware Tray

- OPTIONAL**
- Insta-Hot: Hot & Cold Water Dispenser

BEDROOM

- Solid Wood Panel Bath and Bedroom Doors
- Solid Wood Framed Headboard with Padded Fabric Accent
- Quilted Bedspread
- Queen Innerspring Pillow Top Mattress (60" x 80")
- Lift Up Bed with Full Under Bed Storage
- Solid Surface Nightstand Countertops
- Over Head Cabinet Above the Bed
- Wall Sconce Light Fixtures
- 30" Deep Bedroom Slides

- Day/Night Pleated Shades
- Remote Generator Start Switch
- Second Phone Jack
- Remote Keyless Entry
- Second Solid Surface Lavy Sink w/Solid Surface Top (Select Models)

- OPTIONAL**
- Shirt Ward with Drawers(Select Models)

- Second Bedroom Vanity with Sink (Select Models)
- King Bed with Pillow Top (72" x 80")
- Select Comfort Queen Air Mattress w/2 Remotes
- Linen Cabinet and Drawers (Select Models)
- Select Comfort King Air Mattress w/2 Remotes
- Full Length Rear Wardrobe (Select Models)

BATHROOM

- Solid Surface Lavy Countertop w/Solid Surface Sink & Delta®; Faucet
- Satin Nickel or Brass Finish Bath Accessories (Decor Tied)
- Decorative Soap Dispenser
- Medicine Cabinet
- LED Floor Lights
- Color Coordinated Fiberglass Shower w/Molded Seat

- Skylight in Shower
- Shower Caddy Molded into Shower Enclosure
- Moen® Hand Held Shower Head
- Etched Glass Shower Door
- Obscure Style Decorative Shower Glass Enclosure
- Residential China Bowl Flush Toilet w/Hand Sprayer

- Residential China Bowl Vacuum Flush Toilet (Rear Bath, Select Models)
- Hardwood Assist Handle (Enclosed Toilet)

FURNITURE

- Exclusive Design, Flexsteel® Furniture
- Flexsteel® Leather Sofa Bed w/Air Mattress (Select Models)
- Flexsteel® Leather Sofa with Removable Arms (Select Models)
- Leather Loveseat (40J, 42L, 42V & 42R)

- Dinette with Base Cabinet Storage
- Full Fabric Dinette Chairs

- OPTIONAL**
- Flexsteel® Leather J-Love Seat (Select Models)

- Villa Wrap-around Dinette Ensemble
- Villa Furniture Package (Loveseat, Sofa, Driver/Passenger Seats)
- Booth Dinette (Select Models)

APPLIANCES

- LIVING ROOM**
- Sony® 32" LCD TV with HD DSS Receiver

- TracVision® R5 Series "In Motion" HDTV Compatible, Domed Digital Satellite System
- Bose® Lifestyle 18 Home Entertainment System

- OPTIONAL**
- Sony® 26" LCD TV (Front - 45H)
 - Sony® 40" LCD TV with HD DSS Receiver (Standard 45H)
 - Central Vacuum System w/Accessory Kit

GALLEY

- Norcold® 12 cu. ft. 4 Door Refrigerator, Icemaker, Water Dispenser, 120V/Propane,
- GE Advantium® Over the Range Convection Microwave Oven

- OPTIONAL**
- Dometic® 14 cu. ft., SideWise Refrigerator, 120V/Propane, Icemaker, Brushed Stainless Finish or Gloss Black (Décor Tied)

- Residential Refrigerator, French Door Style, 20 Cu.Ft with Icemaker
- Dishwasher (Select Models)
- Recessed 3 Burner Range and Oven, Brushed Stainless Finish or Gloss Black (Décor Tied)

GENERAL

- Washer/Dryer (Vented)

- OPTIONAL**
- Stacked Washer/Dryer (Select Models)
 - Washer/Dryer Ready with 2 Shelves

BEDROOM

- Sony® 26" LCD Panel TV with HD DSS Receiver

- Bose® 3-2-1 Home Theater System

- OPTIONAL**
- Sony® 32" LCD TV with HD DSS Receiver

HEATING / PLUMBING

- Dual Stage High Efficient Furnaces w/Thermostat & Auto Ignition (15/22 M /23/34 M)
- Direct Spark Ignition 10 Gallon Water Heater 120V/Propane
- Dual 15.0M Low Profile Roof Air Conditioners, (3) AC's on 42' - 45' Models
- Heat Pump on Rear AC Unit
- Hinged Plumbing & Access Panels (Galley & Bath Areas)
- Propane (LPG) Tank
- Fresh Water Gravity Fill
- Holding Tanks w/Low Point Drain Valves
- Multi-Point Water Pump Switching
- Variable Speed Water Pump
- Water Heater By/Pass Check Valve
- Whole Coach Water Filtration System
- Dual Holding Tank San-T-Flush™; System

OPTIONAL

- 10 Gallon High Output Water Heater (16 Gal. Heat Equivalent)
- Hydronic Heating System, 50,000 BTU (Standard on 42F,45E)
- Hydronic Heating System, 50,000 BTU (Standard on 42F)
- Heated Full Tile Floor (Select Models)
- Heated Tile Floor Galley
- Waste Management System (Macerator)

SAFETY

- Smoke Detector/Alarm
- Carbon (CO) Monoxide Detector
- Fire Extinguisher
- Propane (LP) Leak Detector
- 3 Point Integrated Seat Belts at Driver and Passenger Seats
- Side Docking Lamps (4)
- Momentary Courtesy Lighting at Entry and Passenger Area
- Lighted Exterior Grab Handle with Logo
- Emergency Egress Windows (2)
- Turn Signal Indicators

EAGLE 2007

Standard & Optional Features | EXTERIOR AMENITIES

CHASSIS / ENGINE / SUSPENSION

- Liberty Chassis (Patent Pending) w/Electro Coated Platform
- Independent Front Suspensions with 55 Degree Steering Angle
- Allison® 3000 MH, 6-Speed Automatic Transmission (w/400 HP Engines)
- Allison® 4000 MH, 6-Speed Automatic Transmission (w/500 HP Engines)
- Engine Brake On-Off (Lo-Hi)
- Engine Brake On-Off (Lo-Mid-Hi) (CAT C13)
- Aluminum Wheels
- Anti-Lock Brake System (ABS)
- Air Ride Suspension with Bilstein® Shocks
- Full Air Brakes with Automatic Slack Adjusters
- Automatic Traction Control
- Chassis Filter Service Center
- Daytime Running Lights
- Engine Block Heater
- 295/80R LRH 22.5" Radial Tires
- 200 Amp Leece Neville Alternator
- Group 31 Chassis Batteries (2) - 12V-1000 cca Per Battery
- Automatic 4-Point Hydraulic Leveling System
- Trailer Hitch Receiver 15,000 lbs.
- Tire Pressure Check Gauge (Manual)

OPTIONAL

- Spartan® MMTG, IFS Chassis w/Cummins ISL 400HP (40' - 42' Models)
- Spartan® MMTG, IFS Chassis w/Cat® C9 400HP (40' Models)
- Spartan® K2, IFS Chassis w/Cummins ISM 500HP (42' - 45' Models)
- Spartan® K2, IFS Chassis w/Cat® C13 525HP (42' - 45' Models)
- Automatic 4-Point Dual Leveling, Air and Hydraulic

CONSTRUCTION

- Electro-Coated Heavy Duty Steel Framing (Liberty Chassis)
- Aluminum Framed Wall Construction
- Interlocking Aluminum Framing Connections; Roof, Sidewall, Floor
- Steel Construction on Front Bulkhead
- Vacu-bond® Sidewall, Roof, Floor and Rear Wall
- Dense Bead Foam Insulation Throughout
- 5 Layer Flooring with 3" Bead Foam Insulation
- 6 Layer Roof with 6 1/2" Bead Foam Insulation (at Centerline)
- Dupont® Exterior Automotive Full Body Paint
- Laminated Gel Coat Fiberglass Exterior Sidewalls
- Full Fiberglass Front & Rear Caps
- Seamless One-Piece Fiberglass Roof w/Radius Corners
- Insulated Aluminum Framed and Paneled Luggage Compartment Doors
- Sound Absorption Material Front, Rear & Engine
- Pebble Finished Fiberglass Basement Lining
- Heated Water & Holding Tank Compartments
- Central Electrical Panel for 120V/12V AC/DC
- TuffPEX® Plumbing System

GENERAL AMENITIES

- Diamond Shield Protective Front Mask
- 2800-Watt Pure Sine Wave Inverter / Charger
- Maintenance Free (4) Absorbed Glass Mat 12-Volt Batteries (Group 31)
- Inverter and Battery Monitor
- ESP - Electrical System Protection (Surge Protection Plus)
- Energy Management System (50 Amp)
- Battery Disconnect Switches for House and Chassis
- Solar Charging Panel
- Park Telephone Ready
- Hella Docking Lamps (4)
- Sliding Front Fiberglass Cap
- Windshield Washer Bottle, 2 Gallon Reservoir

GENERAL AMENITIES CONTINUED...

- Hydraulic Powered Generator Slide
- Utility Light-Front & Rear
- Dual Locking Fuel Fill Doors
- Fresh Water Hose (25')
- Sensa Tank Level Monitoring System (Interior & Exterior Monitor)
- Spray Wand w/Soap Dispenser & Paper Towel Holder
- Polished Stainless Steel Bumpers - Front & Rear
- Power Cord Reel, 50 AMP
- Chrome Hitch Cover, Pin & Clip
- Fiberglass Front & Rear Quarter Panels
- Full Width Rear Rock guard with Stainless Logo Panel
- Mud Flaps, Front & Rear
- Roof Mounted Engine Air Intake
- Two Piece Aluminum Rear Ladder
- Integrated Rear Upper Fiberglass Wing Deflector
- Brushed Chrome Rear Access Grill
- Solar Charging Panel
- Power Luggage Door Locks with Remote Key Fob
- Exterior Side Hinged Storage Doors with Locks
- Hinge Pin Retention System
- Patio Recaptacles
- Porch Light
- Touch Pad Keyless Entry
- Brushed Stainless Kick Plate Under Entry Door
- Power Double Entry Step " Bus Style"
- Boxed End Slide-Out Awnings
- (4) Electrical Outlets in Exterior Luggage Compartments (120v)
- Air Service Line (50')
- Chrome "Bus Style" Heated Mirrors w/Remote Adjustment & Turn Signal Indicators
- Convenience Light in Utility Compartment

O

- OPTIONAL
- 2 Exterior Graphic Design Choices (No Charge)
- Power Water Hose Reel
- Spot Light
- Acrylic Shield (Deletes Standard Diamond Shield)
- Power Cord with Remote Operation
- Custom Exterior Paint Color Request
- "A". Basement Slide-Out Tray Package (2) 90" (N/A with Hydro Hot)
- "B". Basement Slide-Out Tray Package (2) 54" & (2) 36" (N/A with Hydro Hot)
- "C". Basement Slide-Out Tray Package (1) 90", (1) 54", (1) 36" (N/A with Hydro Hot)
- "D". Basement Slide-Out Tray Package (1) 54", (1) 36" (N/A with Hydro Hot)
- "E". Basement Slide-Out Tray Package (1) 90" & (1) 54" (Available with Hydro Hot)

APPLIANCES

- Onan® 7.5kW Quiet Diesel Generator, Hydraulic Power Slide-Out (40' Models)
- Onan® 10.0kW Quiet Diesel Generator, Hydraulic Power Slide-Out (Select Models)
- Power TV Antenna with Audible "Antennae Up" Warning
- Exterior Entertainment Center with Easy Swing Extension Arm and Cabinet Storage (Includes: Sony® 26" LCD TV, AM, FM, CD, DVD Player and additional cabinet storage.)
- Power Tech® 8.0kW Generator, Hydraulic Power Slide-Out (40' Models)

OPTIONAL

- Norcold® 100 lb Chest Refrigerator/Freezer 12V/120V (Requires Tray Option)
- Additional 2000-Watt Pure Sine Inverter / Charger, (4) AGM Batteries (Group 31)

AWNINGS / WINDOWS / DOORS

- 30" Avionics Front Entry Door with Dead Bolt and Pneumatic Air Latches
- Entry Screen Door with Logo Kick Plate
- Powered Entry Door Awning
- Color Coded Awnings & Awning Arms
- Carefree Powered Patio Awning with Wind Sensor and Remote
- Color Coordinated Slide-Out Topper Awnings
- Window Awnings (Bedroom & Front Roadside Windows)
- Tinted Dual Pane Windows with Screens

OPTIONAL

- Girard Electric Awning Package (Includes: Patio, Sofa Dinette and Bedroom Window Awnings)



www.AmericanCoach.com

For more information, visit us at www.AmericanCoach.com
or call us at 800.854.1344.

© 2006 Fleetwood Enterprises, Inc.
Printed in the USA, Inventory Control Number AE07B1, 7/06.
Model Year 2007, First Edition.