



AMERICAN COACH 2007

*Remember that feeling of wanting to go somewhere,  
anywhere?*

THE OFFICIAL LUXURY COACH

*American*  
**TRADITION**

OF THE AMERICAN ROAD

*So do we.*

You used to imagine all the wonderful things that lay farther down the road. It's time to find out – behind the powerful wheel of American Tradition, a proud member of the elite American Coach family. Life's greatest adventure is about to unfold at your feet.



American Tradition 42R shown in Onyx with Standard graphics.





American Tradition 42R shown in Toasted Almond décor with Regency Cherry wood cabinetry. Home entertainment center includes Sony® 26" LCD TV and Sony® Dream Home Theater system.





TRADITION 2007

Surrounded by your friends in the old tree-  
house, you'd dream big dreams and laugh  
together for hours. Nothing much has

*When you were little, you used  
to think big. Why stop now?*

changed, except that today you've achieved  
your dreams. So now you can entertain your  
friends in more lavish style in your spectacular  
American Tradition. (You'll probably find you're  
going to make a lot of new friends, too.)





TRADITION 2007



*Have the coolest  
toys on the block.*

American Tradition is brimming with whiz-bang electronics. It has two complete stand-alone Sony® home theater systems, both with high-def LCD TVs and the best entertainment components. You and your friends can enjoy it lounging on the comfy, custom-designed furniture. We know... the child inside you is jumping for joy.









*Even a peanut butter and jelly  
sandwich would taste gourmet here.*

The sheer beauty of the galley makes any meal more memorable. Yet it's also equipped with the finest appliances, Corian® countertops and magnificent hardwood cabinetry. If you're a serious chef, it's like being a kid in a candy store.



# *A nickel says we've got the smoothest ride.*

With the engine running, we placed a nickel on end, on one of the frame rails of American Tradition. And the nickel didn't fall over on its side – that's how little vibration was created.

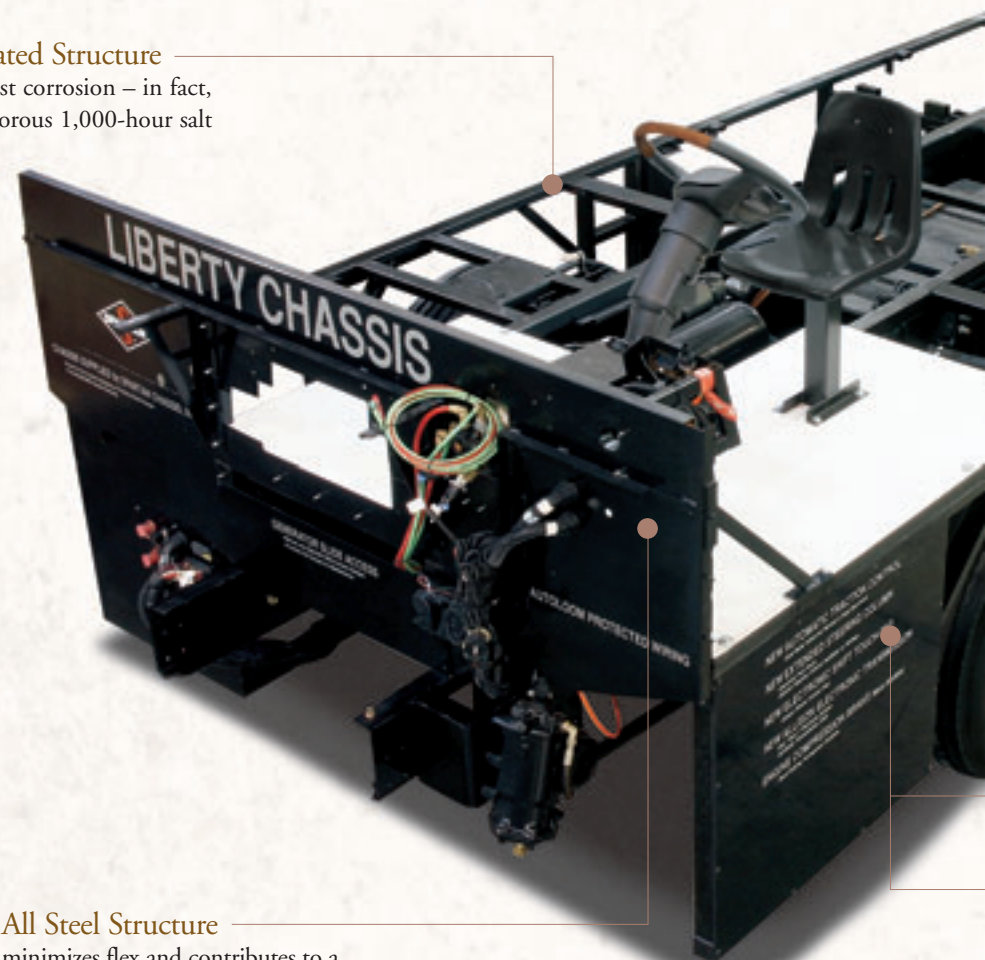
The secret is our exclusive Liberty Chassis that makes American Coach the best riding luxury coach.



The Liberty Chassis provides a strong, rigid frame that strengthens the integrity of the driving platform. Complemented by a high-performance diesel engine, it creates an extremely smooth driving experience. A nickel proves it.

## Electro-Coated Structure

protects against corrosion – in fact, it passed a rigorous 1,000-hour salt spray test.



## All Steel Structure

minimizes flex and contributes to a lower center of gravity that enhances the driving experience.





**Huge 15,000 lbs. Towing Capacity**  
easily tows your favorite vehicle.

**Automatic Traction Control (ATC)**  
improves traction if the coach is on a  
slippery surface.

**Laminated  
Storage Liners**  
are made of a durable,  
fiberglass-reinforced plastic  
to stay clean and neat.

**55-Degree Turning Angle**  
allows you to turn more sharply.

**Independent  
Front Suspension**  
handles those uneven road  
surfaces smoothly.

The Driver's Area surrounds you with a cockpit full of high-tech wizardry, including a Visteon® six-CD player and AM/FM radio, and an available Garmin® Navigation System.



After a busy morning, who could resist  
the posh charms of the bedroom suite  
for a decadent afternoon nap? Even if

*A nap used to be required.  
Here, it's a reward.*

you wait until the stars appear, you'll  
appreciate the high-def entertainment  
center, heavenly mattress and extravagant  
décor. For as long as you can keep your  
eyes open, that is.









## *Soap up in style.*

Start your day surrounded by every amenity, from the top-of-the-line showerhead to the porcelain sink. In fact, if you look up “luxury” in the dictionary, it should rightly show a picture of this bathroom.





## EXTERIOR GRAPHICS\*

### STANDARD GRAPHICS



Onyx



Manhattan Beige



Newport Blue

### RIBBON GRAPHICS



Independence Blue



Dark Shadow



Warm Graphite

\* Not all exterior colors are shown. See your American Coach dealer or visit our website at [www.AmericanCoach.com](http://www.AmericanCoach.com) to view all graphic and color choices.

## *Exterior Graphics / Interior Décor*

### CABINETRY HARDWARE

Cabinetry hardware has been carefully coordinated with specific interior décor schemes for a designer look.



### WOOD SAMPLES



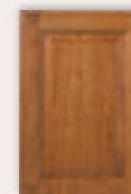
Silver Mocha Maple



Regency Cherry



Clear White Maple

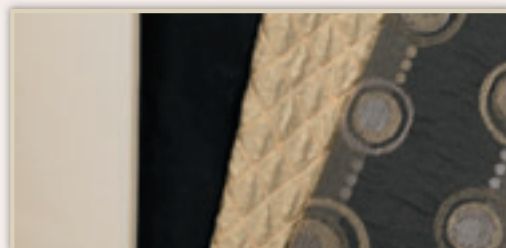


Windsor Birch

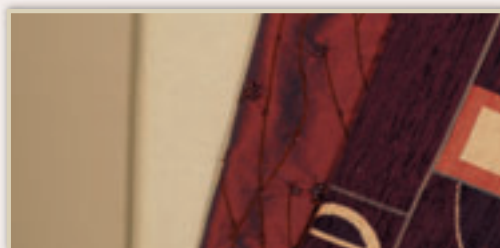


Natural Cherry

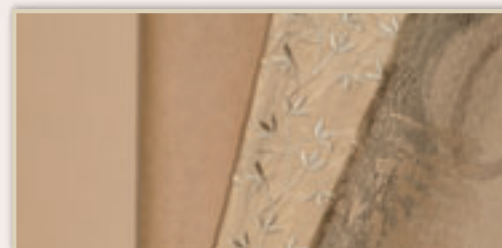
### FABRIC DÉCORS



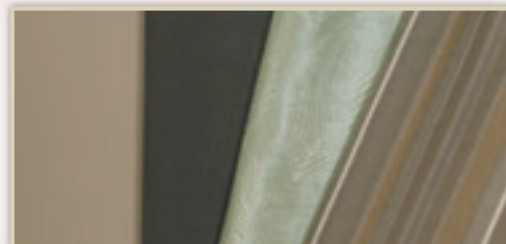
Phantom Black



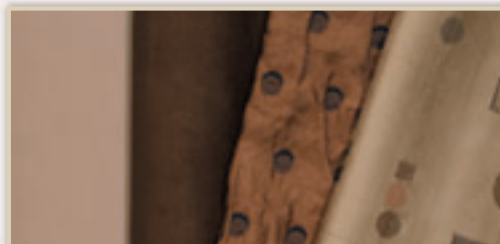
Empress Burgundy



Toasted Almond



Hematite Ivy



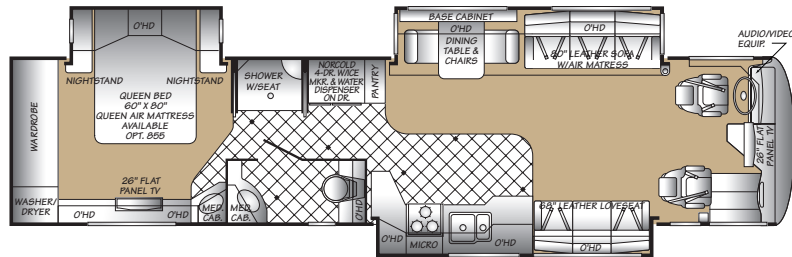
Dark Chocolate



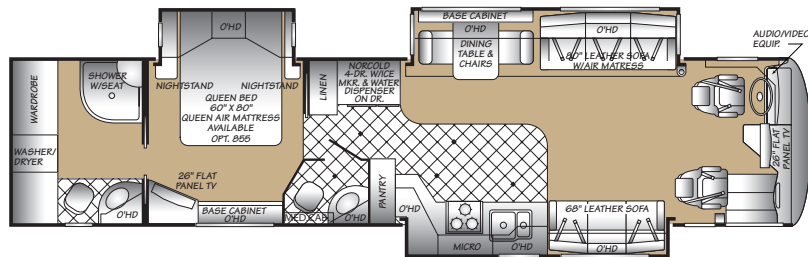
Tempting Taupe

# Floor Plans

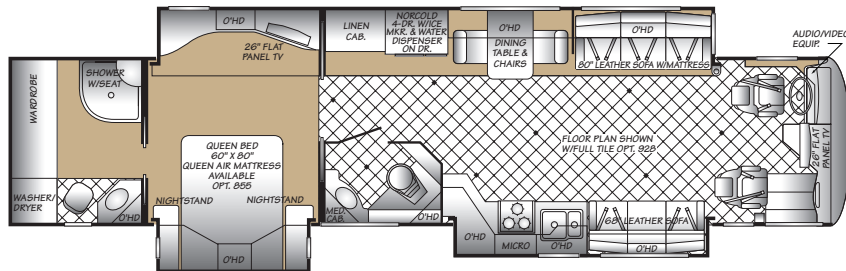
**PLAN 40J**



**PLAN 40Z**



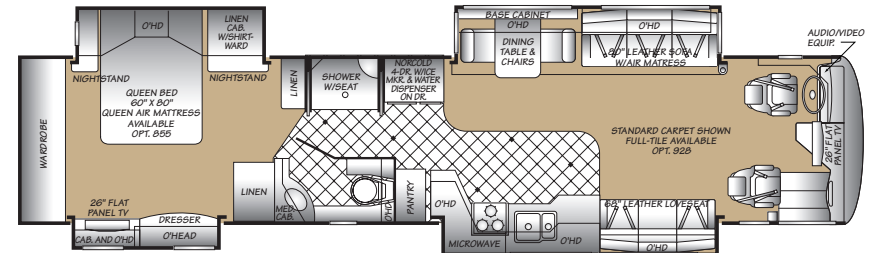
**PLAN 42F**



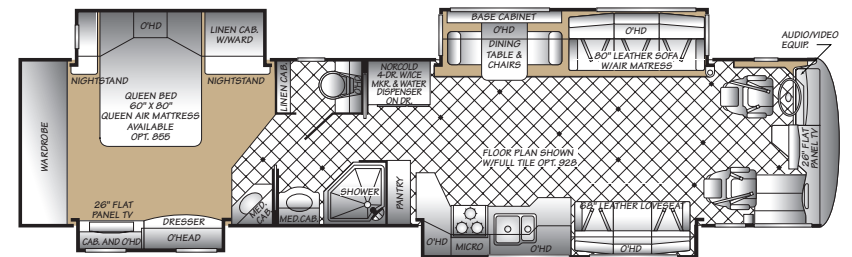
Seatbelt configuration may vary depending on options chosen.

Not all available options are shown. See your American Coach dealer or visit our website at [www.AmericanCoach.com](http://www.AmericanCoach.com) to see all available options.

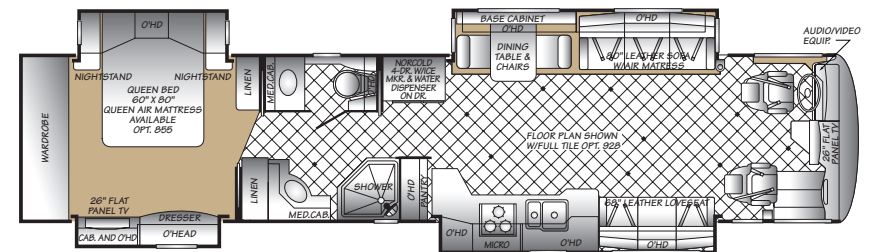
**PLAN 42L**



**PLAN 42R**



**PLAN 42V**



## A WORD ABOUT SERVICE.

It's likely you've already heard stories about the personalized service and support enjoyed by American Coach owners. It's true – our sterling service is beyond compare. A team of knowledgeable, helpful professionals provides complete peace of mind on every issue, no matter how small. We treat you like part of the family.



# Weights and Measurements

TRADITION 2007

WEIGHTS	40J	40Z	42F	42L	42R	42V
GVWR (lbs) <sup>1</sup>	34,600	34,600	44,600	44,600	44,600	44,600
Front GAWR (lbs) <sup>2</sup>	14,600	14,600	14,600	14,600	14,600	14,600
Rear GAWR (lbs) <sup>2</sup>	20,000	20,000	20,000	20,000	20,000	20,000
Tag Axle GAWR (lbs) <sup>2</sup>	N/A	N/A	10,000	10,000	10,000	10,000
Base Weight (lbs) <sup>3</sup>	28,400	28,900	33,600	33,200	33,700	33,400
GCWR (lbs) <sup>4</sup>	49,600	49,600	59,600	59,600	59,600	59,600
Hitch Rating Weight (lbs) <sup>†</sup>	15,000	15,000	15,000	15,000	15,000	15,000
Tongue Weight (lbs) <sup>†</sup>	1,500	1,500	1,500	1,500	1,500	1,500

DIMENSIONS AND CAPACITIES						
Wheelbase	266"	278"	302"	302"	302"	302"
Overall Length <sup>5</sup>	39' 11.5"	40' 11.5"	42' 11.5"	42' 11.5"	42' 11.5"	42' 11.5"
Overall Height (w/Sat Dome)	12' 11.5"	12' 11.5"	12' 11.5"	12' 11.5"	12' 11.5"	12' 11.5"
Overall Width (maximum) <sup>6,7</sup>	102"	102"	102"	102"	102"	102"
Interior Height (maximum)	82"	82"	82"	82"	82"	82"
Interior Width (maximum)	96"	96"	96"	96"	96"	96"
Fresh Water Holding Tank (gal)	95	95	120	120	120	120
Black Water Holding Tank (gal)	40	40	40	40	40	40
Grey Water Holding Tank (gal)	70	70	70	70	60	60
Appliance Propane Tank (gal) (WC) <sup>8</sup>	38	38	38	38	38	38
Water Heater Tank (gal)	10	10	10	10	10	10
Fuel Capacity (gal)	125	125	150	150	150	150
STD Carefree Patio Awning Length	19' 6"	19' 6"	17' 6"	20' 6"	20' 6"	20' 6"
OPT Girard Patio Awning Length	13' 4"	12' 5"	12' 5"	13' 4"	13' 4"	13' 4"

**Liquid Weight Reference:** Water (gal) = (8.3 lbs/3.8 kgs) Fuel (gal) = (7.1 lbs/3.2 kgs) Propane (gal) = (4.2 lbs/1.9 kgs)  
**Metric Conversion:** Multiply pounds x 0.453 to obtain kilograms. Multiply gallons x 3.785 to obtain liters. Multiply liters x 61 to obtain cubic inches.

## CHASSIS – CUMMINS® 400/CAT® 400

**Frame:** Liberty Chassis

**Engine:** ISL 400HP, 8.8L / C9 400HP, 8.8L

**Torque:** 1200 lb-ft @ 1300 RPM / 1100 lb-ft @ 1400 RPM

**Transmission:** Allison® 3000 MH, 6 Speed w/Electronic Shifter

**Alternator Amps:** 200 Amp, Leece Neville

**Tires:** 295/80R 22.5 Goodyear® Radial

1. GVWR (Gross Vehicle Weight Rating) is the maximum permissible weight of this fully loaded motor home. The GVWR is equal to or greater than the sum of the (UVW) unloaded vehicle weight plus the (CCC) cargo carrying capacity\*.
2. GAWR (Gross Axle Weight Rating) is the maximum permissible loaded weight a specific axle is designed to carry.
3. Base Weight is the estimated weight of the motor home without fuel, options, water, cargo or passengers.
4. GCWR (Gross Combined Weight Rating) is the value specified by the motor home manufacturer as the maximum allowable loaded weight of this motor home with its towed vehicle. Towing and braking capacities may be different. Refer to American Coach and chassis manufacturer's manuals for complete information.
5. Length taken from front bumper to rear bumper (excludes accessories).
6. Excludes safety equipment and awnings.
7. Motor homes feature a body-width over 96" which will restrict your access to certain roads. Before purchasing, you should research any state and/or province road laws which may affect your usage.
8. Tank manufacturer's listed water capacity (WC). Actual propane capacity is 80% of water listing as required by the safety code.

N/A = Not Applicable.

\*UVW and CCC are found on the cargo carrying capacity label in each RV.

† The chassis manufacturer recommends the installation of a supplemental brake control system to activate the brakes on the vehicle or trailer you are towing. Hitch receiver ratings expressed are maximum for the hitch receiver installed and may require the purchase of additional equipment that is dependant on the weight of the towed load. Consult with hitch receiver manufacturer for further information.

**IMPORTANT — PLEASE READ:** Product information, photography and illustrations included in this publication were as accurate as possible at the time of printing. For further product information and changes, please visit our website at [www.AmericanCoach.com](http://www.AmericanCoach.com) or contact your local American Coach dealer. Prices, materials, design and specifications are subject to change without notice. All weights, fuel, liquid capacities and dimensions are approximate. American Coach has designed its recreational vehicles to provide a variety of uses for its customers. Each vehicle features optimal seating, sleeping, storage and fluid capacities. The user is responsible for selecting the proper combination of loads (i.e. occupants, equipment, fluids, cargo, etc.) to ensure that the vehicle's capacities are not exceeded.

— TRADITION 2007 —

*Standard & Optional Features* | INTERIOR AMENITIES

## GENERAL AMENITIES

- Decorative Throw Pillows
- Masland® Carpeting
- Decorative Wood Window Treatments
- Fan-Tastic® Rain Sensor Power Roof Vents w/3-Speed Fan (3)
- Interior MultiPlex Switches
- TV Cable Ready
- Solid Wood Face Framed Cabinetry and Moldings
- Lined Cabinet Interior Bottoms & Shelves
- Flush Bolt Latch Decorative Hardware on Pocket Doors
- Ceramic Tile Floor at Entry, Galley and Bathroom
- Ceramic Tile Backsplash with Accent Inserts

**OPTIONAL**

- 5 Wood Choices with 6 Fabric Decors (No Charge)
- Custom Interior Request
- Factory V.I.P. Delivery

## DRIVER CONVENIENCE

- 6-Way Power Driver Seat with Heat, Power Lumbar
- 6-Way Power Passenger Seat with Heat, Power Lumbar and Electric Footrest
- Sony Color Rear View System, 16:9 Display and Camera, One-Way Audio
- Cruise Control
- I.C.C. Light Switch
- Smart Wheel w/Leather & Burl Wood Trim
- Tilt/Telescoping Steering Wheel
- Top Mounted Intermittent Windshield Wiper System with Wet Arm
- Driver Side Pull Down Shade
- Power Driver Window
- One Piece Windshield Bonded to Steel
- Full Coverage Power Sun Visors
- Built in Dash Storage Cabinetry with Snack Tray
- Driver and Passenger Drink Holder
- Hardwood Accented Dash Top
- Driver and Passenger Map Lights
- Visteon® AM/FM CD-6 Radio In Dash w/Sirius® Satellite Radio (Includes 6-Month Subscription)
- Halogen Head Lamps
- Denso® Dash Climate Control System
- Adjustable Brake & Throttle Pedals
- Compass & Exterior Temperature Gauge
- Back Lit Automotive Dash with Full Instrumentation
- Tag Axle Dump Switch (Tag Axle Models)
- Keyless Entry Door Access w/Key Fob

- Auxiliary Fog/Driving Lamps
- Auxiliary Start Switch
- CB Radio Ready (Power & Antenna)
- Hadley® Air Horns
- Low Level Washer Fluid Indicator
- Multiple Auxiliary 12 Volt Dash Receptacles
- Remote Auxiliary Start Switch

**OPTIONAL**

- 6-Way "Spacious" Power Passenger Seat with Heat, Power Lumbar and Electric Footrest
- Garmin® Navigation System
- Side View Cameras
- Trip Tek Trip Computer / Chassis Monitoring System

## LIVING ROOM

- Hydraulic Step Well Cover
- Entry Step Switch at Entry Wall
- Lighted Step well Area
- Large Passenger Window
- Windshield Privacy Curtain
- 12V Halogen Ceiling Lighting
- 12V Halogen Reading Lights
- Centralized Audio-Electronics
- Day/Night Pleated Shades
- Hardwood Front TV Overhead Cabinetry

- Raised Panel Cabinet Doors
- Dinette Storage and Decorative Free Standing Chairs (2 Folding Style Guest Chairs)
- Centralized Command Center
- Outlet & Telephone Jack
- Automatic Generator Start System
- Inverter and Battery Monitor

**OPTIONAL**

- Ceramic Full Tile Flooring (Select Models)

## GALLEY

- No Drip Edge on Countertop
- Solid Surface Galley Top, Range and Sink Covers
- Solid Surface Dinette Table, Slide Out Extension, 4 Decorative Chairs
- Stainless Steel Sink, Large 60/40
- Ceramic Tile Backsplash with Decorative Inserts
- Recessed 3 Burner Cook Top
- Roller Bearing Drawer Guides, Full Extension
- Adjustable Shelves
- Cabinet Storage for Sink & Range Covers Select Floor Plans
- 12V Fluorescent Ceiling Lighting
- Micro Mini Blind
- Task Halogen Lighting
- High Rise Galley Faucet w/Pullout Sprayer
- Silverware Tray

## BEDROOM

- Solid Wood Panel Bath and Bedroom Doors
- Solid Wood Framed Headboard with Padded Fabric Accent
- Quilted Bedspread
- Queen Innerspring Pillow Top Mattress (60" x 80")
- Lift Up Bed with Full Under Bed Storage
- Wall Sconce Light Fixtures
- 30" Deep Bedroom Slides
- Day/Night Pleated Shades
- Remote Generator Start Switch
- Second Phone Jack
- Second Solid Surface Lavy Sink w/Solid Surface Top (Select Models)
- Cedar Lined Wardrobe
- Wardrobe Lighting

**OPTIONAL**

- Second Bedroom Vanity with Sink (Select Models)
- King Bed with Pillow Top (72" x 80") (N/A 40Z)
- Select Comfort Queen Air Mattress w/2 Remotes
- Linen Cabinet and Drawers (Select Floor Plans)
- Select Comfort King Air Mattress w/2 Remotes (N/A 40Z)
- Shirt Ward with Drawers (Select Models)
- Full Length Rear Wardrobe (Select Models)

## BATHROOM

- Solid Surface Lavy Countertop w/Porcelain Bowl & Moen® Faucet
- Satin Nickel or Brass Finish Bath Accessories (Decor Tied)
- Decorative Soap Dispenser
- Medicine Cabinet
- Color Coordinated Fiberglass Shower w/Molded Seat
- Skylight in Shower
- Shower Caddy Molded into Shower Enclosure
- Moen® Hand Held Shower Head
- Obscure Style Decorative Shower Glass Enclosure
- Residential China Bowl Flush Toilet w/Hand Sprayer

- Residential China Bowl Vacuum Flush Toilet (Rear Bath, Select Models)
- Hardwood Assist Handle (Enclosed Toilet)

## FURNITURE

- Exclusive Design, Flexsteel® Furniture
- Flexsteel® Leather Sofa Bed w/Air Mattress (Select Models)
- Dinette with Base Cabinet Storage
- Full Fabric Dinette Chairs

**OPTIONAL**

- Flexsteel® Leather Sofa with Removable Arms (Select Models)
- Flexsteel® Leather J-Love Seat (Select Models)
- Booth Dinette (Select Models)

## APPLIANCES

- LIVING ROOM**
- Sony® 26" LCD TV with HD DSS Receiver
  - Sony® DVD Dream System, Home Entertainment System
  - TracVision® R5 Series "In Motion" HDTV Compatible, Domed Digital Satellite System

**OPTIONAL**

- Sony® 32" LCD TV with HD DSS Receiver
- Central Vacuum System w/Accessory Kit

- GALLEY**
- GE® Over the Range Convection Microwave Oven

**OPTIONAL**

- Recessed 3 Burner Range and Oven
- Dishwasher (Select Models)

- Dometic® 14 cu. ft., SideWise Refrigerator, 120V/Propane, Icemaker, Brushed Stainless Finish or Gloss Black (Decor Tied)

- GENERAL**
- Norcold® 12 cu. ft. 4 Door Refrigerator, Icemaker, Water Dispenser, 120V/Propane,
  - Washer/Dryer (Vented)

**OPTIONAL**

- Washer/Dryer Ready with 2 Shelves

- BEDROOM**
- Sony® 26" LCD TV with second HD DSS Receiver
  - Sony® DVD Dream System, Home Entertainment System



## HEATING / PLUMBING

- Dual Stage High Efficient Furnaces w/Thermostat & Auto Ignition (15/22 M /23/34 M)
- Direct Spark Ignition 10 Gallon Water Heater 120V/Propane
- Dual 15.0M Low Profile Roof Air Conditioners, (3) AC's on 42' Models
- Heat Pump on Rear AC Unit
- Hinged Plumbing & Access Panels (Galley & Bath Areas)
- Propane (LPG) Tank
- Fresh Water Gravity Fill
- Holding Tanks w/Low Point Drain Valves
- Multi-Point Water Pump Switching
- Variable Speed Water Pump
- Water Heater By/Pass Check Valve
- Whole Coach Water Filtration System
- Dual Holding Tank San-T-Flush™ System

### OPTIONAL

- Hydronic Heating System, 50,000 BTU ( Standard on 42F)
- Heated Full Tile Floor (Select Models)
- Heated Tile Floor Galley
- 10 Gallon High Output Water Heater (16 Gal. Heat Equivalent)
- Waste Management System (Macerator)

## SAFETY

- Smoke Detector/Alarm
- Carbon (CO) Monoxide Detector
- Fire Extinguisher
- Propane (LP) Leak Detector
- 3 Point Integrated Seat Belts at Driver and Passenger Seats
- Side Docking Lamps (4)
- Momentary Courtesy Lighting at Entry and Passenger Area
- Lighted Exterior Grab Handle with Logo
- Emergency Egress Windows (2)
- Turn Signal Indicators

— TRADITION 2007 —

## Standard & Optional Features | EXTERIOR AMENITIES

## CHASSIS / ENGINE / SUSPENSION

- Liberty Chassis (Patent Pending) w/Electro Coated Platform
- Independent Front Suspensions with 55 Degree Steering Angle
- Allison® 3000 MH, 6-Speed Automatic Transmission (w/400 HP Engines)
- Exhaust Brake Switch (CAT C9 400 HP)
- Engine Brake On-Off (Lo-Hi) (Cummins 400 HP)
- Aluminum Wheels
- Anti-Lock Brake System (ABS)
- Air Ride Suspension with Bilstein® Shocks
- Full Air Brakes with Automatic Slack Adjusters
- Automatic Traction Control
- Chassis Filter Service Center
- Daytime Running Lights
- Engine Block Heater
- 295/80R LRH 22.5" Radial Tires
- 200 Amp Leece Neville Alternator
- Group 31 Chassis Batteries (2) - 12V-1000 cca Per Battery
- Automatic 4-Point Hydraulic Leveling System

- Trailer Hitch Receiver 15,000 lbs.
- Tire Pressure Check Gauge (Manual)

### OPTIONAL

- Spartan® MMGT, IFS Chassis w/Cummins ISL 400HP (40' - 42' Models)
- Spartan® MMGT, IFS Chassis w/Cat® C9 400HP (40' Models)
- Automatic 4-Point Dual Leveling, Air and Hydraulic

## GENERAL AMENITIES CONTINUED...

- Hinge Pin Retention System
- Patio Receptacles
- Porch Light
- Power Double Entry Step
- Boxed End Slide-Out Awnings
- (4) Electrical Outlets in Exterior Luggage Compartments (120v)
- Air Service Line (50')
- Chrome "Bus Style" Heated Mirrors w/Remote Adjustment & Turn Signal Indicators
- Convenience Light in Utility Compartment

### OPTIONAL

- Spot Light
- Acrylic Shield (Deletes Standard Diamond Shield)
- 2 Exterior Graphic Design Choices (No Charge)
- Power Water Hose Reel
- Power Cord Reel, 50 AMP
- Solar Charging Panel
- Power Luggage Door Locks with Remote Key Fob
- Custom Exterior Paint Color Request
- "A". Basement Slide-Out Tray

- Package (2) 90" (N/A with Hydro Hot)
- "B". Basement Slide-Out Tray Package (2) 54" & (2) 36" (N/A with Hydro Hot)
- "C". Basement Slide-Out Tray Package (1) 90", (1) 54", (1) 36" (N/A with Hydro Hot)
- "D". Basement Slide-Out Tray Package (1) 54", (1) 36" (N/A with Hydro Hot)
- "E". Basement Slide-Out Tray Package (1) 90" & (1) 54" (Available with Hydro Hot)

## CONSTRUCTION

- Electro-Coated Heavy Duty Steel Framing (Liberty Chassis)
- Aluminum Framed Wall Construction
- Interlocking Aluminum Framing Connections; Roof, Sidewall, Floor
- Steel Construction on Front Bulkhead
- Vacu-bond® Sidewall, Roof, Floor and Rear Wall
- Dense Bead Foam Insulation Throughout
- 5 Layer Flooring with 3" Bead Foam Insulation
- 6 Layer Roof with 6 1/2" Bead Foam Insulation (at Centerline)
- Dupont® Exterior Automotive Full Body Paint
- Laminated Gel Coat Fiberglass Exterior Sidewalls
- Full Fiberglass Front & Rear Caps
- Seamless One-Piece Fiberglass Roof w/Radius Corners
- Insulated Aluminum Framed and Paneled Luggage Compartment Doors

- Sound Absorption Material Front, Rear & Engine
- Pebble Finished Fiberglass Basement Lining
- Heated Water & Holding Tank Compartments
- Central Electrical Panel for 120V/12V AC/DC
- TuffPEX® Plumbing System

## GENERAL AMENITIES

- Diamond Shield Protective Front Mask
- 2000-Watt Pure Sine Wave Inverter / Charger
- Maintenance Free (4) Absorbed Glass Mat 12- Volt Batteries (Group 31)
- Inverter and Battery Monitor
- ESP - Electrical System Protection (Surge Protection Plus)
- Energy Management System (50 Amp)
- Battery Disconnect Switches for House and Chassis
- Park Telephone Ready
- Hella Docking Lamps (4)
- Sliding Front Fiberglass Cap
- Windshield Washer Bottle, 2 Gallon Reservoir
- Hydraulic Powered Generator Slide (42' Models)
- Utility Light-Front & Rear
- Dual Locking Fuel Fill Doors
- Fresh Water Hose (25')
- Sensa Tank Level Monitoring System (Interior & Exterior Monitor)
- Spray Wand w/Soap Dispenser &

- Paper Towel Holder
- Chrome Hitch Cover, Pin & Clip
- Fiberglass Front & Rear Quarter Panels
- Fiberglass Molded Front Bumper
- Full Width Rear Rock guard with Stainless Logo Panel
- Mud Flaps, Front & Rear
- Roof Mounted Engine Air Intake
- Two Piece Aluminum Rear Ladder
- Exterior Side Hinged Storage Doors with Locks

## APPLIANCES

- Onan® 7.5kW Quiet Diesel Generator, Manual Slide-Out (40' Models)
- Onan® 10.0kW Quiet Diesel Generator, Hydraulic Power Slide-Out (42' Models)

- Power TV Antenna with Audible "Antennae Up" Warning

### OPTIONAL

- Exterior Entertainment Center with Easy Swing Extension Arm and Cabinet Storage (Includes: Sony® 26" LCD TV, AM, FM, CD, DVD Player and additional cabinet storage.)
- Norcold® 100 lb Chest Refrigerator/Freezer 12V/120V (Requires Tray Option)

## AWNINGS / WINDOWS / DOORS

- 30" Avionics Front Entry Door with Dead Bolt and Pneumatic Air Latches
- Entry Screen Door with Logo Kick Plate
- Powered Entry Door Awning
- Color Coded Awnings & Awning Arms
- Carefree Powered Patio Awning with Wind Sensor and Remote
- Color Coordinated Slide-Out Topper Awnings

- Window Awnings (Bedroom & Front Roadside Windows)
- Tinted Dual Pane Windows with Screens

### OPTIONAL

- Girard Electric Awning Package (Includes: Patio, Sofa Dinette and Bedroom Window Awnings)



[www.AmericanCoach.com](http://www.AmericanCoach.com)

For more information, visit us at [www.AmericanCoach.com](http://www.AmericanCoach.com)  
or call us at 800.854.1344.

© 2006 Fleetwood Enterprises, Inc.  
Printed in the USA. Inventory Control Number AT07B1, 7/06.  
Model Year 2007, First Edition.