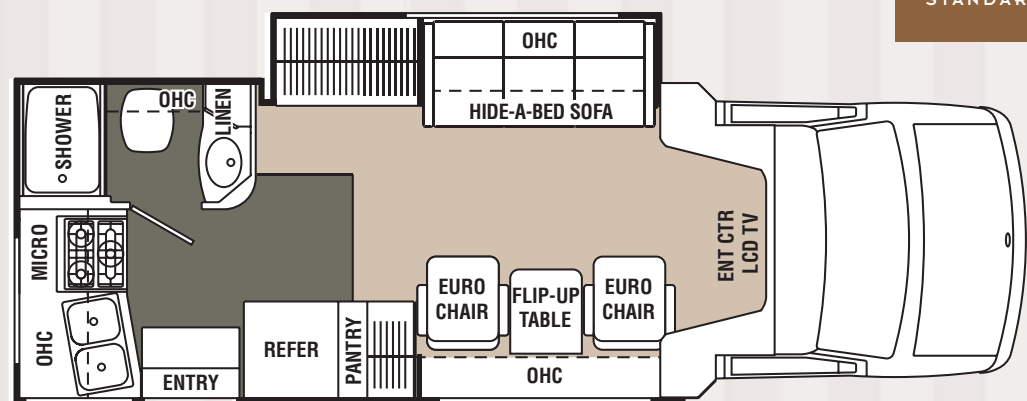


# CONCORD

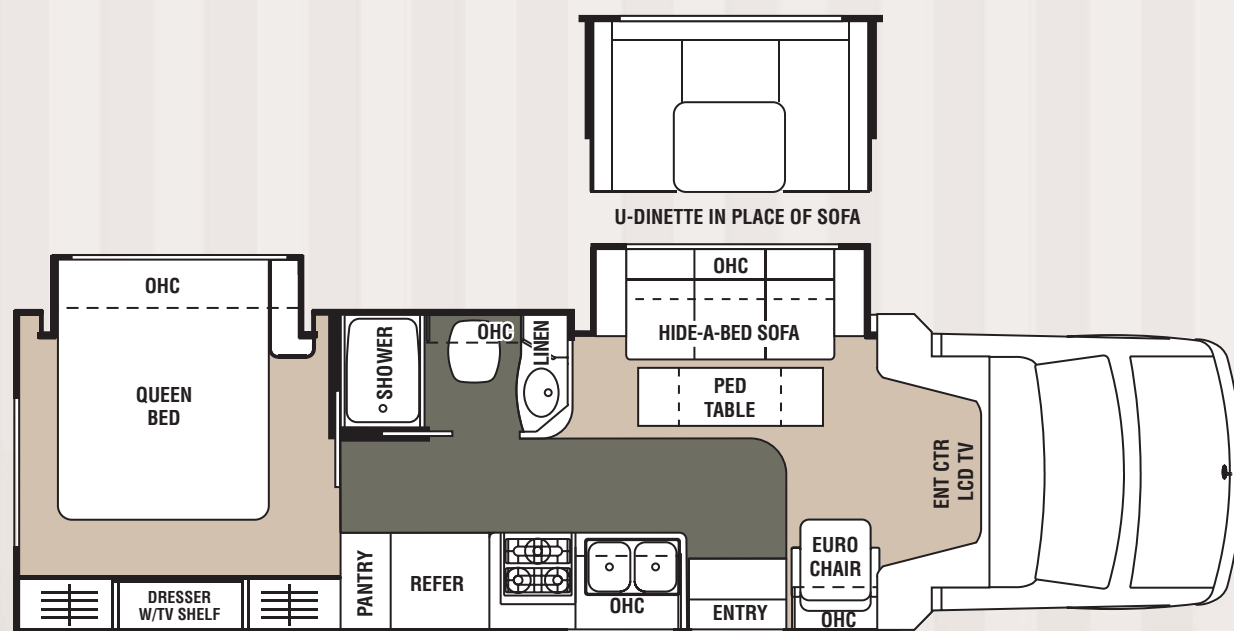
B+ PLUS MOTORHOMES BY COACHMEN

LEGEND:  Carpet  Linoleum

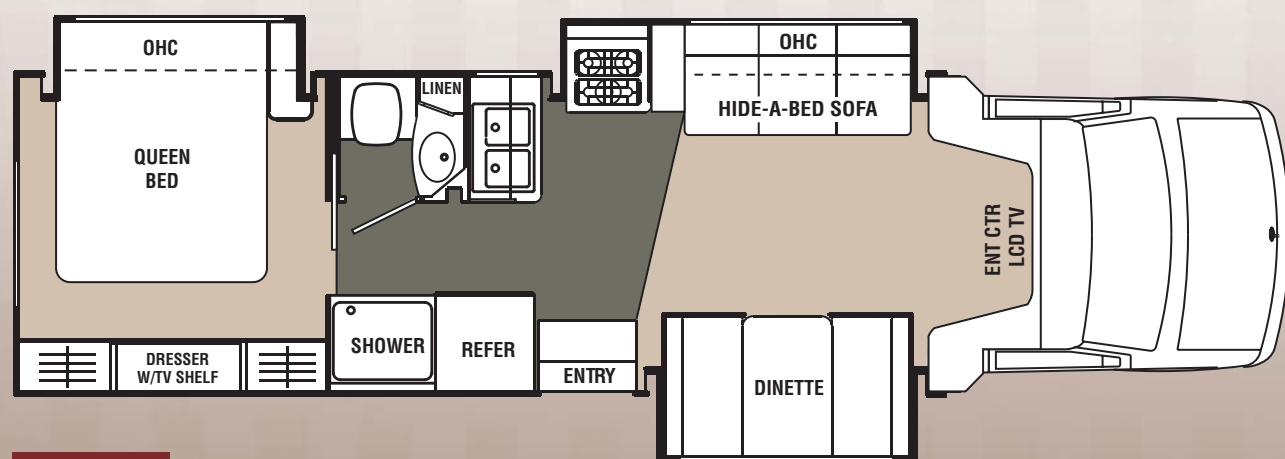
HIDE-A-BED  
SOFA  
STANDARD ON CONCORD



235 SO



275 DS



300 TS

CONCORD	235 SO	275 DS	300 TS
Chassis	FORD	FORD	FORD
Chassis Model	E-45	E-45	E-45
Engine Size	6.8L	6.8L	6.8L
Wheel Base	170"	208"	208"
Rear Axle Ratio	4.56	4.56	4.56
Tire Size	LT225/75R16E	LT225/75R16E	LT225/75R16E
GVWR (lbs.)	14,050	14,050	14,050
Curb Weight	10,815*	11,785*	12,240*
GAWR Front (lbs.)	4,600	4,600	4,600
GAWR Rear (lbs.)	9,450	9,450	9,450
GCWR (lbs.)	20,000	20,000	20,000
Exterior Length	24'5"	29'8"	30'10"
Exterior Height*	10'3"	10'3"	10'3"
Exterior Width	7'9"	7'9"	7'9"
Exterior Storage Capacity (Cu. Ft.)	27	38	41
Sleeping Capacity	2	3	4
Interior Width	7'6"	7'6"	7'6"
Interior Height	6'6"	6'6"	6'6"
Fuel Capacity (gal.)	55	55	55
Alternator Amps	130	130	130
Fresh Water Capacity (gal.)	47	43	43
Waste Water Capacity (gal.)	28	27	28
Grey Water Capacity (gal.)	35	49	52
Water Heater Capacity (gal.)	6	6	6
LP Gas Capacity (lbs.)	40	85	85
Furnace Rating (x1000) BTU	25	25	25

\* Includes clearance for roof air conditioner

**GVWR (Gross Vehicle Weight Rating):**  
The maximum permissible weight of the unit, including the U/W plus all fluids, cargo, optional equipment and accessories. For safety and product performance, do not exceed the GVWR.

**GAWR (Gross Axle Weight Rating):**  
The total weight each front/rear axle, suspension and tire system is designed to carry. When loading the unit, care should be taken to balance cargo weight in consideration of the GAWRs.

**GCWR (Gross Combined Weight Rating):**  
The maximum total weight of the loaded unit, plus a tow vehicle. This includes the weight of both the unit and tow vehicle, fuel for each, all other fluids, cargo, occupants, optional equipment and accessories.

**IMPORTANT NOTE:**  
All capacities are approximate, and all dimensions are nominal. Coachmen motorhomes are designed to allow for a wide variety of uses, extended trips with two people or short trips with multiple people. Accordingly, each unit allows ample room for sleeping, seating, fluids and cargo. While the customer is the beneficiary of this design, the customer also bears the responsibility to select the proper combination of passengers, cargo, load, and tow vehicle without exceeding the chassis weight capabilities. Consumer may need additional breaking capacity to tow loads greater than 1000 lbs.

Seat belts should always be worn for passenger safety. Seat belts are provided at most locations to allow convenience in selecting which seat to occupy. However, it is not intended that all seating positions equipped with a seat belt may be occupied while the vehicle is in motion, without regard to other weight factors.

All Coachmen motorhomes are designed to ensure that the number of passengers allowed while the vehicle is in motion will always at least equal the stated sleeping capacity. Though extra seat belts may be provided, for your safety and the proper operation of your vehicle, limit your passengers to the number allowed by the Net Carrying Capacity of your vehicle.



Extra wide running boards for solid footing in and out of the cockpit  
Concord's class leading exterior storage gives you the extra space you need.  
Raised departure angle enhances rear ground clearance  
LED driving lights are extra bright and long lasting



## OUTSTANDING DESIGN

Concord's class leading exterior storage gives you the extra space you need.  
The lighted exterior grab handle is easy to see at night.



The spacious and inviting interior of the 300 TS Concord features raised panel cabinet doors, plush short shag carpet, an upgraded lighting package and designer interior appointments throughout. (Shown with Brazilian Cherry Cabinetry and Bronzeville Haven decor)

## EASY LIVING SPACE



Full extension drawer guides make for easy access to your drawers.



The coach command center provides a single panel for commonly used gauges and switches.



In the modern kitchen you will find stainless steel style appliances like a convection microwave oven, cooktop range, and double door refrigerator.

## POPULAR FEATURES

- INTERIOR APPOINTMENTS**
  - Welbeck Birch Cabinetry
  - Hardwood Cabinet Doors w/Hidden Hinges
  - Full Extension Metal Drawer Guides
  - Techwood Drawer Sides
  - Easy Clean Vinyl Ceiling Material
  - Pleated Window Shades
  - Tinted Safety Glass Windows
  - Jalousie Windows in Bedroom
  - Designer Kitchen Countertops
  - Booth Dinette
  - Hide-A-Bed Sofa
  - Ultra Leather Euro Chair (275 DS)
  - 2 Ultra Leather Euro Chairs (235 SO)
  - Cedar Lined Wardrobes
  - Pedestal Dinette Table (275 DS)
  - Double Bowl Kitchen Sink w/Covers
  - Medicine Cabinet
  - Glass Shower Door
  - Skylight Over Shower
  - Owners Information Package
- APPLIANCES & ACCESSORIES**
  - 26" LCD Television
  - DVD Player
  - Bose® Wave Radio
  - Convection Microwave Oven
  - 3-Burner Cooktop Range
  - Double Door Refrigerator w/Stainless Steel Look Inserts
  - Cable TV Jacks
  - Omni-Directional TV Antenna
  - Exterior Entertainment Center w/Remote Control
  - Pre-wired for Satellite Dish
  - 30 Amp Power Cord
  - 55 Amp Electronic Converter
  - Auxiliary Battery
  - Coach Battery Compartment
  - Exterior Security Light
  - Coach Battery Disconnect
  - GFI Circuit
  - Outside 120V Receptacle
  - Patio Light
  - 4.0 KW Gas Generator (Onan)
  - Outside 120V Receptacle
- PLUMBING & LP SYSTEMS**
  - Porcelain Footpedal Flush Toilet
  - One-Piece ABS Shower Surround
  - Demand Water Pump
  - Exterior Sprayer/Wash Station
  - Tank Flusher System
  - 6-Gallon Gas/Electric E.I. Water Heater
  - In-Line Whole House Water Filter
  - Duratube™ Copper LP Lines
- EXTERIOR & CONSTRUCTION**
  - 55-Gallon Fuel Tank
  - Chrome Front Bumper
  - Towing Hitch w/7-Way Plug
  - ABS Rear Bezel Bumper & Light Bar
  - Under Mount Spare Tire Kit (275 DS, 300 TS)
  - Radial Tires
  - Full Metal Wheel Covers
  - Air Assist Suspension
  - Laminated Floor
  - Laminated Curved Sidewalls
  - Crowned & Laminated Roof
  - TPO Roof Covering
  - Fiberglass Running Boards
  - Radius Entrance Door w/Dead Bolt Lock
  - Radius Baggage Doors
  - Roof Ladder
  - Patio Awning
  - Slideroom Awning - Bedroom (275 DS, 300 TS)
  - Slideroom Awning (Coach)
  - Roto Cast Trunk Boxes
  - High Visibility LED Running Lights
  - Acrylic Lighted Entry Handle
  - Electric Heated Holding Tanks
- HEATING & AIR CONDITIONING**
  - 25,000 BTU E.I. Furnace
  - 13,500 BTU Low Profile Ducted Roof Air Conditioner
  - Wall Mounted Thermostat
  - Power Bath Vent
  - Three-Speed Roof Vent (Coach)
- ELECTRICAL & LIGHTING**
  - 30 Amp Power Cord
  - 55 Amp Electronic Converter
  - Auxiliary Battery
  - Coach Battery Compartment
  - Exterior Security Light
  - Coach Battery Disconnect
  - GFI Circuit
  - Outside 120V Receptacle
  - Patio Light
  - 4.0 KW Gas Generator (Onan)
  - Outside 120V Receptacle
  - Directional Reading Lights Above Sofa
  - Coach Command Center
- COCKPIT CONVENIENCES**
  - Reclining 2-Tone Captains Chairs
  - Driver & Passenger Air Bags
  - Cruise Control
  - Tilt Steering Wheel
  - Power Windows & Locks
  - Dash Air Conditioning
  - Heated & Remote Exterior Mirrors
  - Backup Camera (Power Flip-up Screen Integrated Into Dash Stereo)
  - Dash Stereo w/CD Player, Weatherband & Sirius Satellite Ready
- SAFETY**
  - Emergency Start Switch
  - LP Leak Alarm
  - Smoke Detector
  - Carbon Monoxide Detector
  - Fire Extinguisher

## OPTIONAL FEATURES

- Brazilian Cherry Cabinetry
- U-Shaped Booth Dinette (275 DS)
- Ultra Leather Sofa
- Second Battery
- Auto Power Entrance Step
- Stainless Steel Wheel Inserts
- Painted Skirt
- 6.0L Diesel Engine - Ford (235 SO, 275 DS)
- CSA Uptit (Mandatory for all Canadian Provinces)

## ASK ABOUT THESE COACHMEN EXCLUSIVE FEATURES



Maximize your cooling efficiency with the Even Cool™ air conditioning system. Insulated ductwork with radius corners provides for smooth air flow.



Duratube™ copper LP lines help to extend the life of your appliances. Corrosion resistant copper lines run the full length from LP source to the appliance.



Lightweight, corrosion resistant aircraft grade aluminum material is utilized throughout the roof and walls for superior strength and light weight.



The exclusive Water Works™ utility panel makes for simple water functions.



The SureLine™ custom wiring harness provides color coded wires grouped together in a protective autloom covering. Specific wiring schematics make for easy serviceability.





LIFE'S AN  
ADVENTURE  
**365**  
DAYS A YEAR

# CONCORD

B+ PLUS MOTORHOMES BY COACHMEN

Coachmen Recreational Vehicle Company, LLC  
P.O. Box 30, Middlebury, IN 46540 ■ P.O. Box 948, Fitzgerald, GA 31750  
Visit our website at: [www.coachmenrv.com](http://www.coachmenrv.com)  
©2006 Coachmen Recreational Vehicle Company, LLC - All rights reserved. Litho in USA 6/07



**Leader to the Great Outdoors®**

Coachmen makes sure that their dealers are well equipped and trained to service your needs with: Systems Manuals, PDI Manuals, Electronic Parts Catalogs, Coach-Link™ On-Line™ Electronic Dealer Communication System and continual service training.

**SERVICE SUPPORT CENTER WEB SITE** - Coachmen provides you access to key information 24-hours a day through the Internet. On-line you can find a Service Dealer Locator, Maintenance Information, Trouble Shooting Questions (FAQ's) and Publications ordering, dating back to 1972 models.

**PRIORITY PARTS ORDERING** - Coachmen provides a program for overnight parts shipment in critical repair situations.

**DEALER SUPPORT TOOLS** - Coachmen makes sure that their dealers are well equipped and trained to service your needs with: Systems Manuals, PDI Manuals, Electronic Parts Catalogs, Coach-Link™ On-Line™ Electronic Dealer Communication System and continual service training.

**TOLL FREE SERVICE NUMBERS** - Our toll free phone numbers provide you with direct access to a Coachmen RV Service Representative.

**FOR YOUR CONVENIENCE WE OFFER PUBLISHED MATERIALS ON KEY EQUIPMENT AND OPTIONS, AS WELL AS INFORMATION PERTAINING TO THE FUNCTION OF IMPORTANT COMPONENTS. WE ALSO OFFER A TROUBLE SHOOTING AND MAINTENANCE GUIDE FOR THE SIMPLE ANSWERS TO FREQUENTLY ASKED QUESTIONS.**

**COMPREHENSIVE OWNERS INFORMATION** - For your convenience we offer published materials on key equipment and options, as well as information pertaining to the function of important components. We also offer a trouble shooting and maintenance guide for the simple answers to frequently asked questions.

**MANUFACTURER'S WARRANTY & MAJOR COMPONENTS** - Coachmen provides a two-year structural and major components manufacturer's warranty, along with a complete written Warranty Summary Guide, for your peace of mind.

**COACHMEN CARAVAN CAMPING CLUB™** - As part of the Coachmen Caravan family, you will receive incredible membership benefits that will help to ensure your safety and enjoyment throughout your RV experiences. Enjoy your Coachmen RV more with the Coachmen Caravan Camping Club.

All information contained in this brochure is believed to be accurate at the time of publication. However, during the model year, it may be necessary to make revisions and Coachmen reserves the right to make all such changes without notice, including changes in prices, colors, materials, equipment and specifications, as well as the addition of new models and the discontinuance of models shown in this brochure. Therefore, please consult with your Coachmen dealer and confirm the existence of any materials, design or specifications that are material to your purchase decision.

**COACHMEN CARAVAN CAMPING CLUB™**  
Coachmen



**DISCOVER THE ADVANTAGES COACHMEN SERVICE AFTER THE SALE**

and appliances. Coachmen stands behind their product and is supported by a network of over 300 service centers.

**INDUSTRY LEADING SERVICE AFTER THE SALE** - Coachmen provides one-year coverage on most parts, components and appliances. Coachmen stands behind their product and is supported by a network of over 300 service centers.

**BUCKSTOPPER™ WARRANTY** - Coachmen's exclusive Buckstopper™ Limited Warranty provides one-year coverage on most parts, components and appliances. Coachmen stands behind their product and is supported by a network of over 300 service centers.

**MANUFACTURER'S WARRANTY & MAJOR COMPONENTS** - Coachmen provides a two-year structural and major components manufacturer's warranty, along with a complete written Warranty Summary Guide, for your peace of mind.

**COMPREHENSIVE OWNERS INFORMATION** - For your convenience we offer published materials on key equipment and options, as well as information pertaining to the function of important components. We also offer a trouble shooting and maintenance guide for the simple answers to frequently asked questions.

**TOLL FREE SERVICE NUMBERS** - Our toll free phone numbers provide you with direct access to a Coachmen RV Service Representative.

**DEALER SUPPORT TOOLS** - Coachmen makes sure that their dealers are well equipped and trained to service your needs with: Systems Manuals, PDI Manuals, Electronic Parts Catalogs, Coach-Link™ On-Line™ Electronic Dealer Communication System and continual service training.

**SERVICE SUPPORT CENTER WEB SITE** - Coachmen provides you access to key information 24-hours a day through the Internet. On-line you can find a Service Dealer Locator, Maintenance Information, Trouble Shooting Questions (FAQ's) and Publications ordering, dating back to 1972 models.

**PRIORITY PARTS ORDERING** - Coachmen provides a program for overnight parts shipment in critical repair situations.



# CONCORD

B+ PLUS MOTORHOMES BY COACHMEN



Automotive styling surrounds you in the cockpit of every Concord with a durable plastic molded headliner, power windows and locks, cruise control, multiple drink holders, dual side airbags, upgraded dash stereo system, and two-toned captains chairs.

## B+ PLUS MOTORHOMES BY COACHMEN

# CONCORD

Relax and enjoy music and movies comfortably in the versatile Concord. The cut away cab area maximizes living space and provides easy access to the captain's chairs. The 300 TS shown here features a booth dinette in the slideroom, along with an ultra leather hide-a-bed sofa option. (Shown in Brazilian Cherry cabinetry and Bronzville Haven decor)



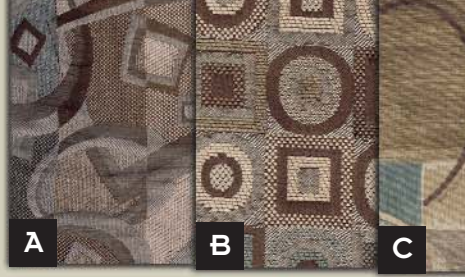
A space saving hide-a-bed sofa is standard equipment on Concord.

**DECOR SELECTION FABRIC KEY:**  
A. Main B. Accent C. Bedspread

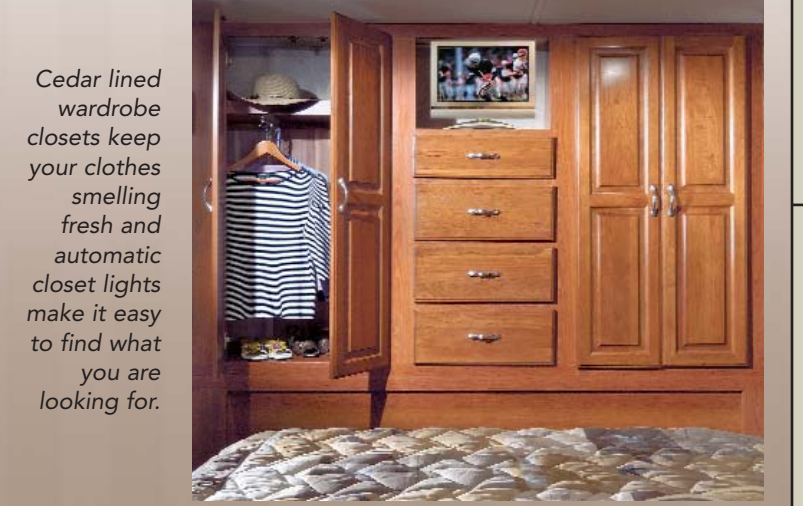
### BRONZVILLE HAVEN



### MINT JULEP



### SANTA CRUZ SAGE



Cedar lined wardrobe closets keep your clothes smelling fresh and automatic closet lights make it easy to find what you are looking for.

## A GOOD NIGHT'S REST STARTS THE DAY RIGHT

Relax in the well appointed bedroom. With elegant details, including a space expanding bed slide and large windows this bedroom rivals those found in much larger motorhomes. (Select models)



**BRAZILIAN CHERRY** **WELBECK BIRCH**

## MAKE THE JOURNEY FUN WITH FEATURES THAT ENTERTAIN



1. The upgraded dash stereo features a CD player and built-in weatherband. This stereo is also easily adaptable to Satellite radio, navigation systems and side view cameras.
2. With the touch of a button, the integrated backup monitor automatically flips out of the dash radio for a confident rear view.
3. Enjoy the outdoors more with the exterior entertainment center and remote control.



Travel comfortably in the well appointed Concord. The 275 DS shown here features a U-dinette option in the slideroom, along with a standard Euro chair recliner on the door side. The state-of-the-art entertainment center features a class leading 26" LCD television, DVD player and Bose® Wave radio sound system. (Shown in Welbeck Birch cabinetry and Mint Julep decor.)