



- *Distinctive Style* • *First Class Elegance*
- *Unsurpassed Value*



High Profile Fifth Wheels

*Where Style and*



Step into *Grand Junction* and experience the ultimate in sophistication and luxury, featuring solid hardwood cabinet doors and frames, solid surface countertops and residential furnishings. *Grand Junction* is the new standard in style, features and function.



# Great Living Merge Beautifully



34TRG in Barcelona Rust with Canyon Cherry wood Shown with optional premium entertainment package.

Residential steel ball bearing drawer glide hardware

Luxurious slide rooms are a staple of the *Grand Junction* product line. The stained hardwood slide room fascia is trimmed with dental and crown molding. The oversized windows are adorned with day/night shades and designer coordinated valances. *Grand Junction* features residential style furnishings with a free standing dinette and four stylish chairs. Little touches like the designer lighting and overhead cabinets with glass inserts add to the beauty of the *Grand Junction* interior.



# Designer Galleys - Residential Features with



37QSL with Mesa Oak wood color

## Kitchens with incomparable design.

Gourmet galleys with premium appliances, cavernous countertop and storage space sets **Grand Junction** in a class by itself. With one piece solid surface countertops, the galley has been painstakingly designed to provide superior ergonomics for the family chef. The massive countertop space gives you the room necessary to prepare multiple dishes for the entire family.



*the*  
**Grand Junction**  
*Advantage*

Left - Central vacuum system is available as an option.

Right - Luxurious 'zero-wall' recliners, large panoramic windows, sleeper sofa and premium lighting.

# Premium Components.



*Grand Junction* is available in two wood colors oak & Cherry.



Mesa Oak



Canyon Cherry

## Solid Hardwood Throughout

All *Grand Junction* models feature solid hardwood doors and cabinet stiles (frames)\*.



\*See Competitive Advantages for details.



37QSL in Barcelona Rust and Mesa Oak interior

# Kitchen & Dining



## *the Grand Junction Advantage*

### **Grand Junction's**

galley's include many premium features as standard equipment. Premium lighting package that includes recessed halogen lamps, florescent light in galley and pendant lighting in the living area. An 8 cubic foot double door refrigerator with raised panel door inserts, a sliding kitchen pantry with travel lock, solid surface countertops, residential faucet with pull-out sprayer, water filter, convection microwave and a 22" oven with sealed burner range make **Grand Junction** your best value.



## *the Grand Junction Advantage*

Above - solid surface countertops, water filter and sprayer faucet.

(Right) - 22" sealed burner range with cover. Overhead microwave with convection element and exterior exhaust.

# Luxurious Bedroom Suites



*Grand Junction's* magnificent master bedroom suite was meticulously designed for comfort and versatility. The bedroom features a designer ensemble including a standard pillow top mattress, quilted bedspread with matching pillows shams and curtains. Reading lights above the raised panel hardwood headboard and the solid wood fascia add to the splendor to the bedroom set. The storage below the lift-up bed is perfect for blankets, sheets and spare pillows while the large front wall closet and shirt ward hold plenty of clothing.

## *the Grand Junction Advantage*

Master bed storage ensemble that includes mirrored closet, washer dryer prep (with closet rod) cabinet, plentiful drawer space and numerous folding options. Finally the bed base is fully accessible for the largest storage capacity in it's class.



# Refreshing Spacious Bathrooms



*Grand Junction's* bathroom is designed for comfort and versatility. The bathroom features a 36" wide one-piece fiberglass neo-angle shower with an integrated seat. A glass shower door and a brushed nickel hand held showerhead are also included. The standard skylight above the shower increases headroom and lets in natural daylight to brighten your day. The porcelain toilet with foot flush lever is standard in *Grand Junction*.

Side aside bath shown



## *the Grand Junction Advantage*

one piece fiberglass is superior to the competitions 2 piece ABS plastic shower enclosures. The brushed nickel hardware and shower head add that special design touch. The Neo-Angle skylight fills the room with natural light.



# Exterior Innovations



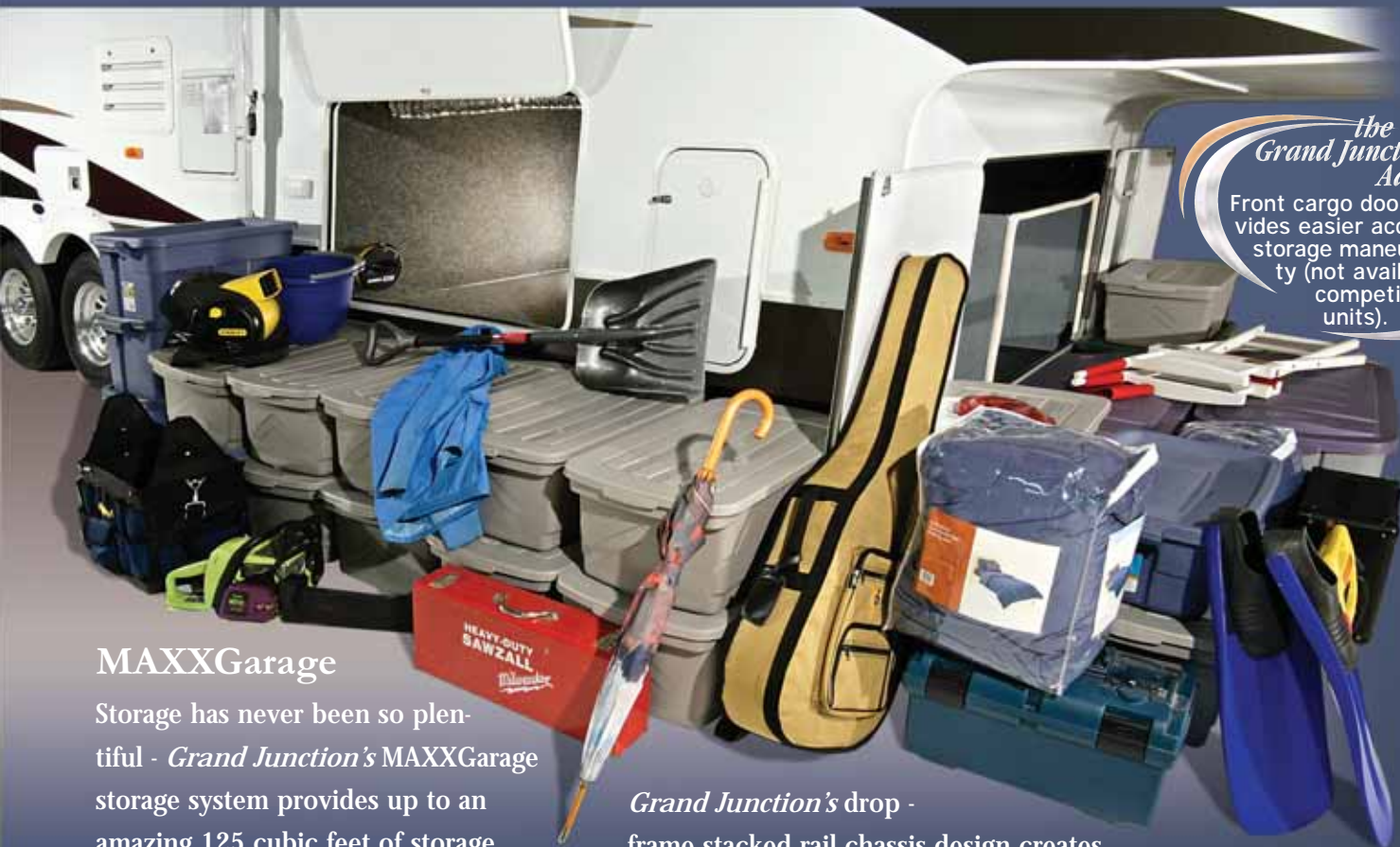
Automotive styling rear cap



Standard electric stabilizer jacks

*Grand Junction* features an easily accessible utility center with tank valve controls, fresh water fill, black tank rinse nozzle, hot and cold water exterior wash station, cable/phone jack, satellite prep and utility light. Also included in every *Grand Junction* are rear electric stabilizing jacks that require a simple push of a button to provide stability and minimize rocking. No more hand cranking like our competitors.

## All these items fit in Grand Junctions under body "MaxxGarage"



*the Grand Junction Advantage*  
Front cargo door provides easier access and storage maneuverability (not available on competitor units).

### MAXXGarage

Storage has never been so plentiful - *Grand Junction's* MAXXGarage storage system provides up to an amazing 125 cubic feet of storage below the body (based on model).

*Grand Junction's* drop-frame stacked rail chassis design creates one of the largest storage spaces available in fifth wheels.



# More Standard Features – More Value

## Frame/Chassis Construction

Cambered 10" Steel I-Beam Frame Rails  
 Drop-Frame, Stacked Rail Chassis  
 Extended Heavy Duty Hitch  
 \*Wide Stance Electric Front Jacks  
 Side Mounted Dual Battery Trays \*  
 Recessed Under-Chassis Spare Tire Carrier \*\*\*\*  
 \*MAXXGARAGE Storage Design  
 XL Front Cargo Doors  
 Powder-Coated Frame  
 10" Steel Crossbeams  
 \*Ladder Design Construction  
 Steel Outriggers  
 7000 LB. Tandem Axles \*\*\*\*  
 Leaf Spring Suspension  
**MOR-ryde RE** Rubber Shear Spring Equalizer \*\*\*\*  
 Ultra-lube Hubs \*\*\*\*  
 8 Lug Hubs \*\*\*\*  
 Aluminum Alloy Rims \*\*\*\*  
 ST235 80R16 LRE E-Rated RV Tires \*\*\*\*  
 Electric 12.25" Drum Braking System  
**MOR-ryde** Rubber Hitch Pin \*\*\*\*

## Slide Room

Electric 'Worm Gear' Slide System  
 Flush Floor Main Slide System  
 Above Floor Electric Steel Bedroom Slide

## Body/Coach Construction

### Sidewalls

Gel-Coat High Gloss Exterior \*\*\*  
 Vacuum-Bonded Lamination Process  
 Aluminum-Framed, Welded Box Infrastructure  
 Polystyrene 'Block Foam' Insulation  
 Vinyl-Wrapped Luan Interior Wall Panel  
 80% Tinted, Radius-Corner, 'Safety Glass,' UV-Rated Windows  
 3M Automotive Film Graphics

### Front & Rear Walls

Front Cap: Gel-Coat Molded Fiberglass \*\*\*  
 Rear Cap: Gel-Coat Molded Fiberglass \*\*\*  
 Aluminum-Framed, Welded Box Infrastructure  
 Laminated Construction  
 1/4" Luan Wood Interior Wall Panel  
 80% Tinted, Radius-Corner, 'Safety Glass,' UV-Rated Windows  
 Polystyrene 'Block Foam' Insulation  
 Vinyl-Wrapped Luan Interior Wall Panel

### Primary Floor

3" Vacuum-Bonded, One-Piece Floor  
 Aluminum-Framed, Welded Box Infrastructure  
 Polystyrene 'Block Foam' Insulation  
 1/4" Luan Panel  
 Vinyl Vapor Barrier  
 5/8" Structurewood One-Piece Decking  
 1/2" 6 lb. Rebound Carpet Pad \*\*  
 Premium Residential Carpeting

### Bath/Bedroom Floor

3" Vacuum-Bonded, One-Piece Floor  
 Aluminum-Framed, Welded Box Infrastructure  
 Polystyrene 'Block Foam' Insulation  
 1/4" Luan Panel  
 5/8" Structurewood One-Piece Decking  
 Premium Residential Carpet

### Sub-Floor/Underbelly

Laminated Construction-2 Piece Application  
 Poly-flex 2000 Exterior Vapor Barrier  
 1/4" Luan Substrate  
 \*Reflectex Aluminum Bubble Wrap Insulation (R7)

### Roof/Ceiling

Aluminum Roof/Truss w/ 5" Tapered Box  
 3/8" Roof Decking  
 R14 Roof Insulation  
 Radius Aluminum Roof to Wall Transition

EPDM Rubber Roof Membrane-12 Year Warranty  
 OPTIONAL: R21 Roof Insulation

## Storage Compartment

MAXX Garage Storage Area  
 Aluminum Luggage Door Frames  
 1" Thick Luggage Door with Lock  
 Lighted Baggage Areas  
 Ozite-Lined Compartment

## Windows, Doors and Awnings

80% Tinted, Radius-Corner, 'Safety Glass,' UV-Rated Windows  
 Transom Window Above Main Slide \*\*\*  
 Opaque, Vented Window In Water Closet (n/a side bath units)  
 Vented Windows (n/a Transom Window)  
 Egress Window in Bedroom  
 Domed Tinted Skylight Above Shower  
 30" Radius-Corner Entry Door with Dead Bolt Lock  
 Bedroom Skylight w/Shade (35TMS Only)  
 Screen Door  
 8500 Series A&E Awning \*  
 Raised Panel Interior Doors (n/a Cherry Stain)  
 Pivoting, XL Entry-Assist Handle \*  
 Optional: Dual Pane Windows  
 Optional: Slide-Out Awning Toppers

## Exterior Features

'Draw Tight' Rear Electric Stabilizer Jack \*\*\*  
 Deluxe 'Quick Release' Front Jack Pull Pins \*  
 Electric Front Jacks (x-wide)  
 16" Spare Tire with White Steel Rim \*\*\*\*  
 Spare Tire Carrier with Lift Kit \*\*\*\*  
 Underbelly (2 piece) - Heated & Enclosed  
 10" Deep, Steel, Triple-Entry Steps - Frame Welded \*  
 Lighted Entry Step  
 Enclosed/Vented Battery compartment for dual battery design  
 Molded ABS Fender Wells  
 Exterior Patio Light \*  
 Exterior Hitch Light  
 Exterior Utility Station \*\*\*  
 Gravity Water Fill  
 Exterior Hot & Cold Shower System \*\*  
 Black Tank Flush System \*  
 City Water Fill with Locking Protective Door  
 Utility Light \*  
 Cable Hook-up  
 Phone Hook-up  
 Satellite Prep \*  
 Rear Ladder \*\*\*  
 Attic Roof Vents (2) \*  
 Drip-Rail Gutter System  
 Extended Gutter Spout  
 Optional: Slide-Out Awning Toppers

## Interior Systems

### Electrical Systems & Lighting

Centralized Interior Electrical Command Center  
 50 amp Electrical Service  
 Detachable Marine-Grade Power Cord \*\*  
 55 Amp Converter  
 110v GFI Exterior Receptacle  
 12v Battery Converter/Charger w/ Overcharge Protection  
 Dual Battery configuration  
 Residential Wall Switches  
 Dome Pendant Light Above Dinette  
 Dome Light Above Sofa  
 Recessed Halogen Puck Lighting \*\*\*  
 Decorative Wall Sconces in Living room and Bedroom  
 Fluorescent Lighting in Galley and Desk Areas \*  
 Optional: Generator Prep  
 Optional: *Onan Marquis Gold* 5.5 kw LP Generator

### Plumbing System

12 Gallon Gas and Electric Hot Water Heater \*\*\*  
 Quick Disconnect, Coiled, 25ft. Hose w/Sprayer \*\*  
*Shurflo* Water Pump  
 "PEX" Polyethylene Tubing

Metal Pressure Fittings  
 Sewer Hose Storage System  
 Hot and Cold Water, Low Point Drains  
 98 Gallon Fresh Water Tank  
 Gray Water Tank: See Individual Floorplan Specs for Details  
 Black Water Tank: See Individual Floorplan Specs for Details  
 Remote Water Heater Switch  
 Washer Dryer Prep (Stackable Capability) \*\*\*

## Climate Control

40K BTU Furnace \*\*\*  
 Forced Air Ducted Heat  
 Forced Air Heat in Underbelly  
 15K BTU Air Conditioner w/Quick-Cool Vent \*\*\*  
 Ceiling-Ducted AC Vents  
 42" Reversible Ceiling Fan w/Halogen Light Kit\*  
 Mold-Resistant, Aluminum-Wrapped AC Plenum  
 Pre-vented and Prepped for 2nd AC \*  
 Optional: Dual (2) Low Profile AC w/Heat Pumps  
 Optional: Low profile 13.5K BTU Bedroom AC-Direct Feed  
 Optional: *Fantastic* Fan in Bedroom (n/a w/Dual AC)  
 Optional: *Fantastic* Fan in Galley/Main Living Area  
 Optional: Electric Fireplace w/4K BTU Heater  
 Optional: 12 V Tank Pad  
 Optional: R21 Roof Insulation

## Key Interior Features

Vinyl 'Soft Touch' Padded Ceiling \*\*\*  
 Pre-Drilled & Screwed Hardwood Cabinet Construction  
 Decorative, Stained Hardwood Slideout Fascia \*\*  
 6 Panel Doors w/Brushed Nickel Designer Hardware (n/a cherry) \*\*  
*Howard Miller* Designer Clock \*\*  
 Premium Residential, Nylon Berber Carpet\*\*  
 1/2" 6 lb. Rebound Carpet Pad \*\*  
 Overhead Cabinets w/ Mini-Struts & Top Mount Hinges  
 Solid Wood Steps to Bedroom (n/a side bath models) \*\*  
 Washer/Dryer Prep (Stackable Capability) \*\*\*  
 Minimum Ceiling Height: 6'7" in Bedroom

## Cabinetry & Countertops

'Kingstone' Solid Surface Acrylic Countertops \*\*  
 Solid Ash, Stained Cabinet Stiles/Frames \*\*  
 Solid Ash, Raised Panel Cabinet Doors  
 Solid Ash Drawer Fronts  
 7-Ply Residential-Grade Plywood Drawer Construction  
 Stainless Steel Ball-Bearing Drawer Glides \*\*  
 Ball-Bearing Drawer Catch  
 Ball-Bearing Slide-Out Pantry with Baskets \*\*\*  
 Brushed Nickel Hardware  
*Austell* Glass Inserts with Solid Ash Frames Above Sofa  
 Optional: Cherry Stained Hardwood Cabinetry

## Window Treatments

Day/Night Shades \*\*\*  
 Mini-Blind (At Kitchen Sink Window)  
 Designer Hard Valance  
 Designer Hard Sided, Full Privacy Lambrequins

## Entertainment Systems

27" Flat Screen Stereo TV w/Remote \*\*\*  
 5:1 Home Theatre System w/Remote \*\*\*  
 Satellite Prep \*  
 Cable Jack  
 TV Antenna w/Power Booster  
 Bedroom TV Prep  
 Optional: Premium Entertainment Package  
 HD-Ready LCD TV  
 LCD TV in Bedroom  
 5 Disc 5:1 Home Theater System  
 Optional: Bedroom Fireplace TV Combo (35TMS Only)

## Galley Area

*Armstrong* Linoleum w/'Tough Guard'  
 High Profile Faucet w/ Retractable Sprayer \*  
 Sink Covers  
 XL Sliding Pantry w/Wire Shelving and Lock \*\*\*  
 Cabinets Doors on Both Sides of Galley Cabinets  
 Trash Can

## Furniture & Appliances

Hide-A-Bed Sofa \*\*\*  
 End Table w/Lamp (n/a 32TCG & 34TRG) \*\*\*  
 Recliners (1-32TCG, 2-All Other Floorplans) \*\*\*  
 Free-Standing, Sliding-Top Dinette Table w/Flip-Up Storage \*\*  
 Two Designer Dinette Chairs w/Below-Seat Storage \*\*  
 Two Coordinating Folding Dinette Chairs \*\*  
 King Size Premium Pillow-Top Mattress (n/a 29DRL, 29DRK & 31TKS) \*\*\*  
 Queen Size Premium Pillow-Top Mattress (29DRL, 29DRK & 31TKS) \*\*\*  
 8 cu.ft. Double Door Refrigerator  
 Solid Ash, Raised Panel Refrigerator Inserts \*  
 Convection 'Over-the-Range' Microwave w/Integrated Exhaust Fan \*\*\*  
*Amana* Sealed 3-Burner Stovetop \*\*\*  
 2 Piece Metal Range Cover  
 Deep, Residential-Style Double-Bowl Sink  
 High-Profile Faucet w/Retractable Sprayer \*  
 Water Purifier w/Spout \*  
 Interior Utility Center  
 Optional: 10 cu.ft. Refrigerator  
 Optional: Second 8 cu.ft. Refrigerator (37QSL only)  
 Optional: Central Vacuum System  
 Optional: Ultra Leather Recliners (1-32TCG, 2-All Other Floorplans)  
 Optional: Booth Dinette

## Bath Area

One-Piece Fiberglass Shower w/Seat \*\*  
 Rain-Glass Shower Walls & Door  
 Brushed Nickel Shower Hardware and Wand  
 Large Medicine Cabinet w/Vanity Lights & Mirror  
 Fiberglass Vanity Sink  
 Residential-Style Brushed Nickel Vanity Faucet  
 Accordion-Style Privacy Door (n/a Side Bath Floorplans)  
 Residential-Style, Six-Panel Lavatory Doors w/Lever Handle\*\* (n/a cherry)  
 Porcelain Bowl *Theford* Toilet \*\*\*  
 Power Vent  
 Toilet Tissue Holder  
 Brushed Nickel Bathroom Accessories  
 Towel Hooks  
 Towel Bar

## Bedroom Area

Solid Stained Hardwood Headboard \*\*  
 Night Stands  
 Overhead Cabinet  
 TV Prep  
 Egress Window  
 Solid Wood Window Box w/Mirrored Doors  
 Premium Bedspread Package & Window Coverings \*\*  
 Below Bed Storage  
 Front Wardrobe Ensemble  
 Sliding Mirrored Doors w/Hanging Storage & Shelf  
 Drawer Bank w/ball bearing Glides \*\*  
 Washer/Dryer Prep Behind Louvered Doors w/Rod & Shelves\*\*

## Safety Features

Fire Extinguisher  
 Dead Bolt Locks on Entry Doors  
 120V GFI Protected Exterior Receptacles  
 LP Gas Detector  
 Smoke Detectors  
 Egress Windows  
 Safety Glass  
 10" Deep, Steel, Triple-Entry Steps - Frame Welded \*  
 Lighted Entry Step  
 Patio Light \*  
 XL Folding Entry-Assist Handle \*  
 Interior Solid Wood Exit Handle  
 Rear Radius Automotive Lamps  
 Front, Rear & Side Amber Road Lights

\* Grand Junction Consumer Convenience Package

\*\* Grand Junction Mile High Premiere Package

\*\*\* Grand Junction Easy Living Premium Package

\*\*\*\* Grand Junction Touring Performance Package



# Premium Construction

## MOR/Ryde Suspension System



Grand Junction is the first fifth wheel in the industry to include the MOR/Ryde Equalizer Suspension System and Rubber Shear-Spring Pin Box as standard features. Both systems work in unison to create the smoothest ride possible in a fifth wheel.

The MOR/Ryde suspension system uses rubber shear springs that work in concert with the steel leaf springs. The rubber shear spring replaces the leaf spring equalizer.

The MOR/Ryde system will lower the spring rate providing for almost double the axle travel of traditional systems. Increased axle travel translates into a smoother ride which protects your RV from jarring caused by rough roads.

### The MOR/Ryde Rubber Shear-Spring

Pin Box incorporates a rubber shear spring that works both longitudinally and laterally to diminish the back and forth 'chucking' motion that occurs between the tow vehicle and RV. This means a more comfortable ride for the driver and passengers. Plus, it reduces stress on the fifth wheel frame and helps prevent damage that can occur from rough towing.



MOR/Ryde Equalizer

Competitor's Equalizer



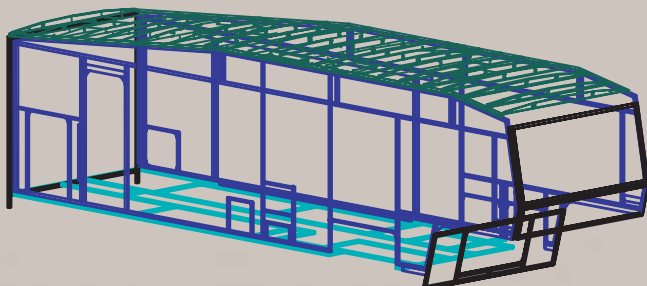
Competitor Hitch

## The Competition

Most competitors still use a steel pivoting equalizer and standard pin box which does not provide the level of shock absorption and damage protection of the MOR/Ryde system.

Protect your investment and enjoy the ride to your destination the with MOR/Ryde system.

## 6-Way Welded Aluminum Cage Construction



## R14, 5-Layer Roof Construction

EPDM one-piece rubber roof with 12 year manufacturer warranty

3/8" decking, 4'x8' sheets

Optional Poly Air bubble/foil insulation sheet option (increases roof value to R21) (optional)

5" Arched aluminum roof rafters, 16" on center

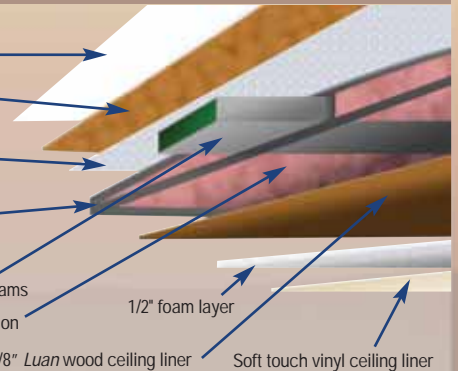
Aluminum foil-wrapped foam air conditioning ducts - foil taped at seams

R14 Fiberglass insulation

1/2" foam layer

1/8" Luan wood ceiling liner

Soft touch vinyl ceiling liner



## Premium Vacuum-Bonded Laminated Wall Construction

High gloss "Gelcoat" exterior finish

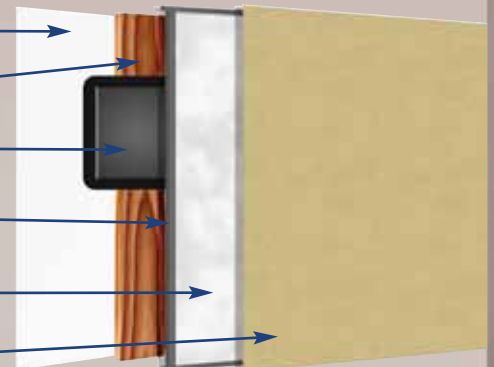
1/4" wood substrate

80% Dark tint, safety glass windows

Tubular aluminum, welded box frame structure

Polystyrene "block foam" insulation

Vinyl-wrapped 1/8" Luan decorative wall board



## Laminated Floor Construction

Premium residential carpet

1/2" Rebond carpet padding

Residential vinyl flooring in galley

5/8" One-piece Structurewood floor

Aluminum heat ducts - seams foil taped

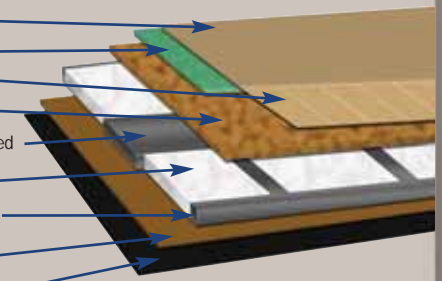
Polystyrene block foam insulation

1 1/2" x 1 1/2" Welded Aluminum box framed infrastructure

1/4" Luan backer board

Poly-flex 2000 vinyl vapor barrier

Plus, heated and enclosed underbelly is standard!



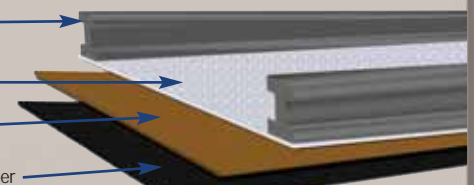
## Heated/Enclosed & Insulated Underbelly

I-Beam chassis

Reflective aluminum bubble wrap insulation

1/4" Luan backer

Poly-flex 2000 exterior vapor barrier





## Competitive Advantages

### Grand Junction's Stacked Rail Chassis Design



Grand Junction prides itself on having the best storage system possible in fifth wheels. That's why we use a stacked rail

chassis design. This chassis design uses double I-beam frame rails to increase the amount of storage space under the bath/bedroom deck. Many models feature an amazing 125 cubic feet of storage – almost 60% more than the competition!

Plus the design of the frame includes a wide stance front jack system. The jacks are placed almost 9" further apart than the competition which increases stability and prevents unwanted body movement when parked.

### The Competition

The competition still uses the traditional straight rail fifth wheel chassis that restricts storage space. Their jacks are mounted closer to the center of the chassis making it less stable.



### 6'7" Bedroom Height at Front Cabinet



More space in the bedroom includes more headroom too! Grand Junction's front wall and roof line allows for added headroom in the bedroom - a full 6' 7" tall at the front storage cabinet!

Most competitors' headroom decreases from the center of the bedroom to the front wall. Some are as low as 5'8" tall.

**Grand Junction - more storage, more height, more comfort**

### Solid Hardwood Doors & Cabinets



Grand Junction's Hardwood Stiles, Slot & Screw Construction



Competitors Lumbercore Stiles, Staple Construction

Grand Junction features solid ash, cabinet stiles/frame, hardwood cabinet doors, drawers and slide room fascias. The wood is stained to match the solid hardwood cabinet stiles.

Many competitors use less expensive, vinyl wrapped MDF fiberboard or lumbercore stiles and slide room fascias. Additionally, many add veneer inserts to their doors and vinyl wrap their stiles to reduce cost.

Hardwood doors, stiles and fascias will retain their factory new appearance for years. The competition's less expensive construction may swell and delaminate over time.

**Grand Junction - which would you rather own, real or made to look real?**

### Soft Touch Ceiling Liner



Attention to detail makes all the difference when you are choosing your next recreational vehicle. On top of all of the other features that make Grand Junction special, we have even looked at ways to improve the ceiling liner.

Grand Junction includes a soft-touch ceiling liner. Usually only found in high end motor homes, Grand Junction

includes this feature as a standard item.

The soft-touch ceiling liner is a stylish vinyl layer that is laminated to 1/2" foam and a 1/8" wood backer. The ceiling liner has a great look, plus it reduces sound levels and adds another layer of insulation to your fifth wheel.

The competition uses a white panel board with nailed batten strips at the seams – every 4'. Ceiling paneling makes work loose over time and does not provide the look or insulation value Grand Junction's soft touch ceiling provides.

**Grand Junction - you can see, feel and hear the difference!**

### Entry Steps



Grand Junction's XL, 10" Deep Entry Steps



Competitors 8" Deep Steps

Grand Junction's entry steps are a full 10" deep and include two anti-slip strips per step. Plus the corners are rounded for added security.

Most competitors use only 8" deep, square corner steps.

Your safety is important to Grand Junction.

**Grand Junction - designed for safety.**

### Steel Ball Bearing Drawer Glides



Grand Junction's stainless steel ball bearing drawer hardware is designed for years of rigorous use. The drawer glides are designed to open easily under a full load and include a drawer stop feature to prevent drawers from opening during travel. The hardware is mounted on the sides of the drawers and is screwed to solid wood drawer sides.

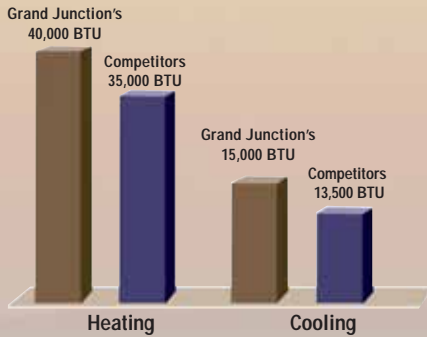
Many competitors use single plastic or combination plastic and metal drawer glides mounted on the bottom of the drawer. Check out the competition's drawer sides. – Are they real wood?

**Grand Junction - premium quality features.**



# Premium Appliances & Utilities

## Heating and Cooling Systems



**Heating:** Grand Junction will keep you warm on those chilly evenings with a standard 40,000 BTU forced air furnace. Most competitors only offer a 35,000 BTU furnace.

**Cooling:** Grand Junction features a standard 15,000 BTU roof air conditioner with a quick cool feature. It's easy to use and cools your RV more efficiently than the competitions 13,500 BTU roof air.

**Grand Junction - warmer, cooler - better!**

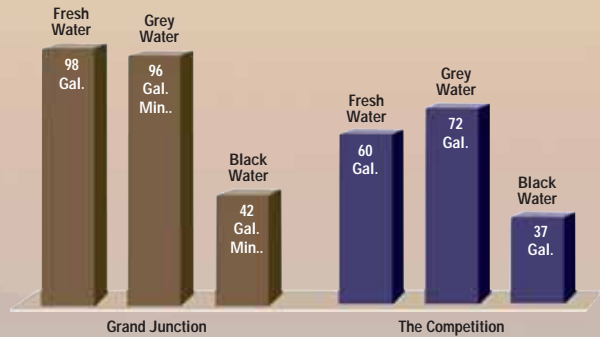
## 12 Gal. Water Heater



Grand Junction's standard 12 gallon, quick recovery water heater allows for longer showers.

Don't settle for the competition's smaller 6 gallon or 10 gallon water heater.

## Large Fresh Water & Waste Water Tanks



Anyone who has owned RV's in the past knows that large tank sizes are critical. That's why Grand Junction uses a 98 gallon fresh water tank, 42 gallon black water tank and dual 48 gallon grey water tanks - some models even feature a third 48 gallon grey water tank! Add Grand Junction's standard 12 gallon hot water heater to the equation and you will find that the Grand Junction has one of the largest water storage systems available in the market today. (See model information for specific tanks sizes)

**40% more Fresh Water capacity - 20% more Black Water capacity and 20% more Grey Water Capacity - The Grand Junction Advantage**

## Sealed Burner Oven & Half-Time Convection Microwave



Grand Junction is designed for enhanced livability by providing you the industry's most advanced products as standard features.

Our 22" Amana range is larger than most competitors' 19" range, plus the three burner cook top features a sealed burner with wire pan rack and range cover. It's large enough to cook the family meal and it's easy to clean.

Grand Junction also features a Half-Time convection microwave. The Half-Time oven operates like a standard microwave or convection oven. Both features can be used together to greatly reduce cooking times. More importantly the convection/microwave is a residential style 'over the range' appliance with integrated exhaust fan that is vented to the exterior.

### The Competition

Many competitors use a 19" oven with open burner cook top. These conventional cook tops have openings that allows food and crumbs to fall between the top and oven. They are difficult to clean. Plus, the competition uses a 1 cubic foot microwave that is built into the overhead cabinets and requires separate exhaust fan which robs your galley of usable space and lifts the appliance to a height that is uncomfortable and dangerous for most users. This construction method reduces overhead storage.

## Solid Surface Residential Countertops

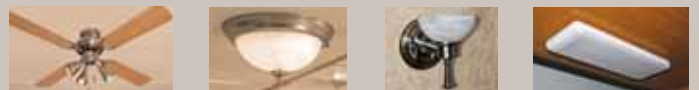
Nothing says class and elegance in a kitchen like solid surface countertops. Grand Junction's solid surface countertops are the ultimate in style and function. Each countertop is 1/2" thick and is hand made to fit your vehicle to assure many years of durable use and classic beauty.

Many of our competitors are using laminate countertops that are glued to 1/4" particle board backers or a fiberglass base with 1/16" of sprayed acrylic. Try running your fingers along the edge, be careful!

Which type of countertop would you rather have?



## Premium Residential Lighting



Grand Junction features premium residential lighting as a standard feature. From the brushed nickel dual pendant dinette light to the standard reading lamps and fluorescent lighting in the galley, Grand Junction provides the stylish lighting you need after dark. Plus, Grand Junction features the all new "Puck Style" recessed halogen lights. This new innovation spreads even amounts of natural day-light style lighting throughout your coach. You will love the glow these lights provide.

**Don't settle for the competition's old fashioned pancake lights!**

## Grand Junction Decors



Barcelona Rust



Fresco Chocolate



Midnight Sun\*



Vintage Moss

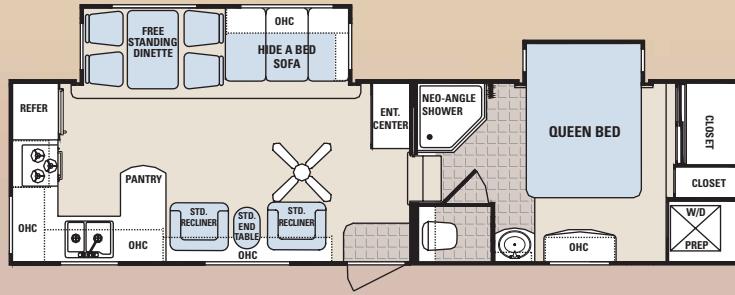
All decors are available with Mesa Oak or Canyon Cherry wood colors. After Sept. 2006 see website for the most current decor options. \*Available Fall of 2006



# Premium Floorplans and Specifications

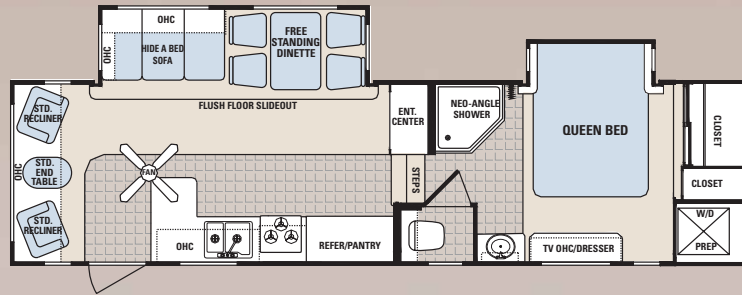
## 29DKR

Unloaded Vehicle Weight	11,057
Dry Hitch Weight	2137
Gross Vehicle Weight	15,500
Net Cargo Capacity	4,443
Length	34 ft. 3 in.
Exterior Width	8 ft.
Exterior Height	12 ft. 5 in.*
Fresh Water Capacity	98
Grey Water Capacity	48/48
Black Water Capacity	42
Tire Size	ST235/80R16 (E)
Furnace Size (BTU's)	40,000



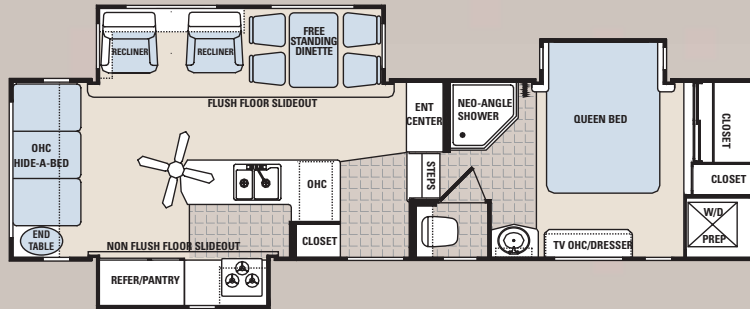
## 29DRL

Unloaded Vehicle Weight	10,607
Dry Hitch Weight	2,269
Gross Vehicle Weight	15,500
Net Cargo Capacity	4,893
Length	33 ft. 11 in.
Exterior Width	8 ft.
Exterior Height	12 ft. 5.5 in.*
Fresh Water Capacity	98
Grey Water Capacity	48/48
Black Water Capacity	42
Tire Size	ST235/80R16 (E)
Furnace Size (BTU's)	40,000



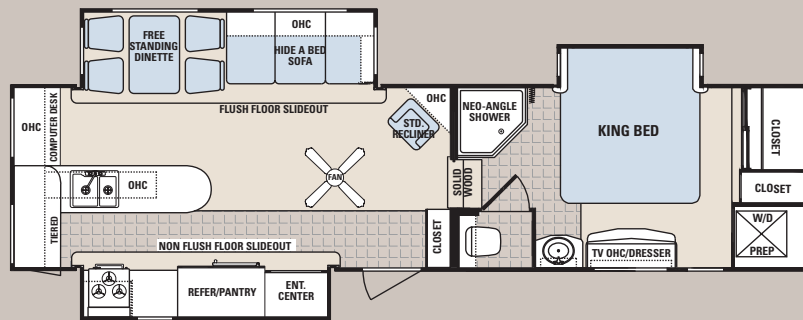
## 31TKS

Unloaded Vehicle Weight	11,425
Dry Hitch Weight	2,210
Gross Vehicle Weight	15,500
Net Cargo Capacity	4,075
Length	34 ft. 4 in.
Exterior Width	8 ft.
Exterior Height	12 ft. 4 in.*
Fresh Water Capacity	98
Grey Water Capacity	48/48
Black Water Capacity	42
Tire Size	ST235/80R16 (E)
Furnace Size (BTU's)	40,000



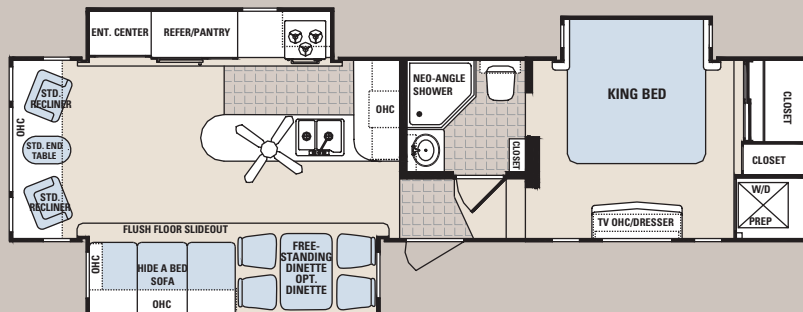
## 32TCG

Unloaded Vehicle Weight	11,195
Dry Hitch Weight	2,175
Gross Vehicle Weight	15,500
Net Cargo Capacity	3,535
Length	36 ft. 2 in.
Exterior Width	8 ft.
Exterior Height	12 ft. 9 in.*
Fresh Water Capacity	98
Grey Water Capacity	48/48
Black Water Capacity	42
Tire Size	ST235/80R16 (E)
Furnace Size (BTU's)	40,000



## 335TRL

Unloaded Vehicle Weight	11,899
Dry Hitch Weight	2,231
Gross Vehicle Weight	15,500
Net Cargo Capacity	3,601
Length	36 ft. 7 in.
Exterior Width	8 ft.
Exterior Height	12 ft. 9 in.*
Fresh Water Capacity	98
Grey Water Capacity	48/48
Black Water Capacity	48
Tire Size	ST235/80R16 (E)
Furnace Size (BTU's)	40,000

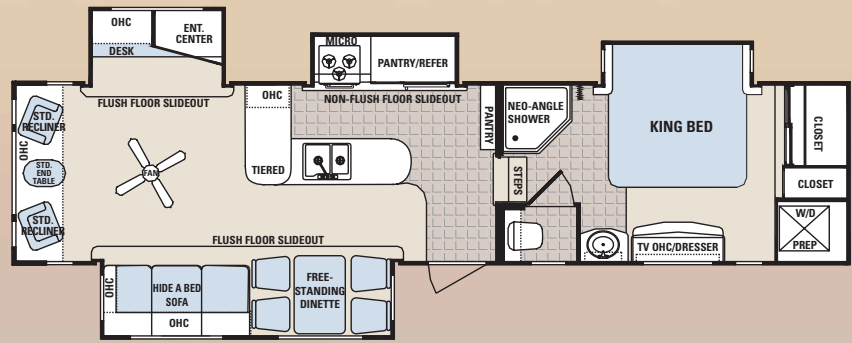




# Premium Floorplans and Specifications

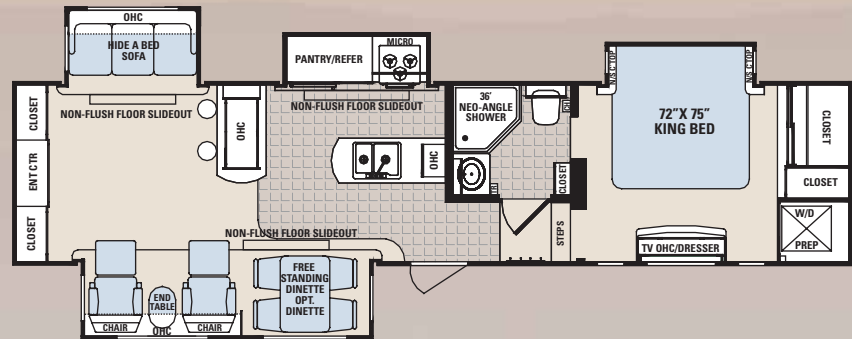
## 34QRL

Unloaded Vehicle Weight	12,731
Dry Hitch Weight	2,484
Gross Vehicle Weight	15,500
Net Cargo Capacity	2,769
Length	38 ft. 3 in.
Exterior Width	8 ft.
Exterior Height	12 ft. 8 in.*
Fresh Water Capacity	98
Grey Water Capacity	48/48
Black Water Capacity	42
Tire Size	ST235/80R16 (E)
Furnace Size (BTU's)	40,000



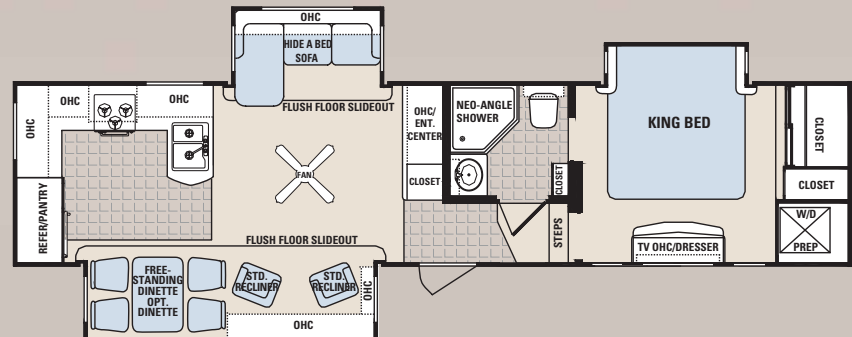
## 34QRE - (Coming Fall 2006)

Unloaded Vehicle Weight	N/A
Dry Hitch Weight	N/A
Gross Vehicle Weight	N/A
Net Cargo Capacity	N/A
Length	N/A
Exterior Width	N/A
Exterior Height	N/A
Fresh Water Capacity	N/A
Grey Water Capacity	N/A
Black Water Capacity	N/A
Tire Size	N/A
Furnace Size (BTU's)	N/A



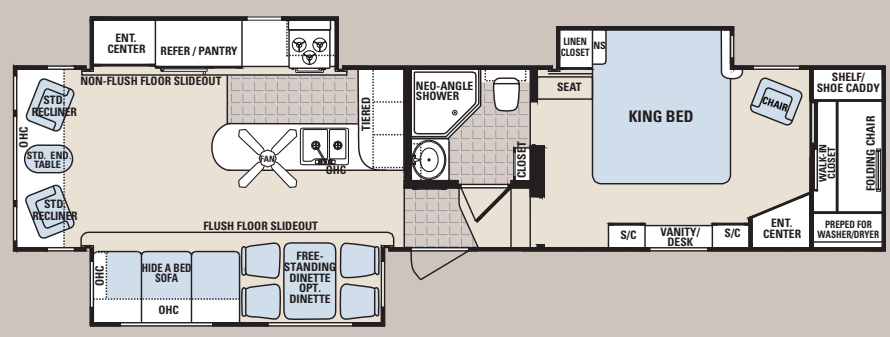
## 34TRG

Unloaded Vehicle Weight	12,318
Dry Hitch Weight	2,870
Gross Vehicle Weight	15,500
Net Cargo Capacity	3,182
Length	38 ft. 4 in.
Exterior Width	8 ft.
Exterior Height	12 ft. 8 in.*
Fresh Water Capacity	98
Grey Water Capacity	48/48/48
Black Water Capacity	48
Tire Size	ST235/80R16 (E)
Furnace Size (BTU's)	40,000



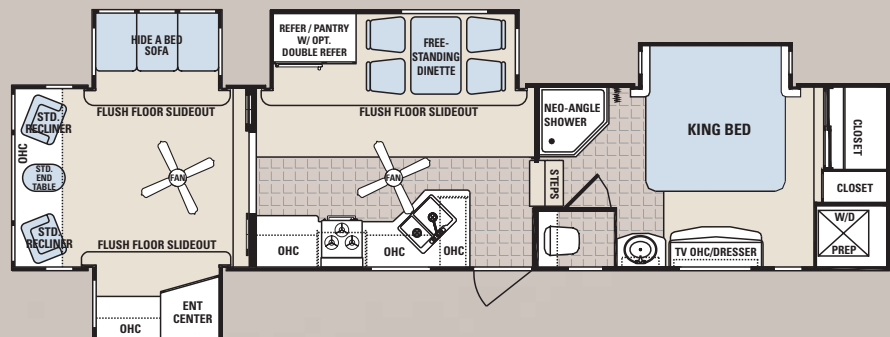
## 35TMS

Unloaded Vehicle Weight	12,840
Dry Hitch Weight	2,273
Gross Vehicle Weight	15,500
Net Cargo Capacity	2,660
Length	39 ft. 8 in.
Exterior Width	8 ft.
Exterior Height	12 ft. 8 in.*
Fresh Water Capacity	98
Grey Water Capacity	48/66
Black Water Capacity	42
Tire Size	ST235/80R16 (E)
Furnace Size (BTU's)	40,000



## 37QSL

Unloaded Vehicle Weight	13,060
Dry Hitch Weight	2,472
Gross Vehicle Weight	15,500
Net Cargo Capacity	2,440
Length	40 ft.
Exterior Width	8 ft.
Exterior Height	12 ft. 9 in.*
Fresh Water Capacity	98
Grey Water Capacity	48/48
Black Water Capacity	42
Tire Size	ST235/80R16 (E)
Furnace Size (BTU's)	40,000



\* Add 5" in total height for optional 2nd AC.



# Competitive Comparison Worksheet

Take a closer look at Grand Junction. It's loaded with standard features you won't find on competitive products.

## Premium Features

	Grand Junction		Competitor A		Competitor B	
	Standard	Optional	Standard	Optional	Standard	Optional
• 6-Way Aluminum Superstructure (walls, roof, floor)	✓					
• 5-Way Vacuum Bonded (Laminated) Construction	✓					
• Drop Frame Chassis Design	✓					
• MOR/ryde "RE" Suspension	✓					
• MOR/ryde Rubber Pin Box	✓					
• Dual 7000 lb. Axles	✓					
• 8 Lug Aluminum Alloy Rims	✓					
• Gel-Coat Fiberglass Exterior	✓					
• "Quick Draw" Electric Rear Stabilizer Jacks	✓					
• Heated Insulated & Enclosed Underbelly	✓					
• R14 Roof Insulation	✓					
• Vented Windows with 80% Tint Safety Glass	✓					
• 10" XL Folding Entry Step	✓					
• Enclosed Utility Center	✓					
• Dual Side Mount Battery Compartment	✓					
• Black Tank Flush System	✓					
• 1" Thick Locking Baggage Doors	✓					
• Solid Surface Countertops with Backsplash	✓					
• Premium "Soft Touch" Vinyl Ceiling	✓					
• Solid Ash Cabinet Stiles	✓					
• Solid Ash Cabinet Doors	✓					
• Solid Ash Slideout Fascia & Crown Molding	✓					
• Armstrong Linoleum with 'Tough Guard' Finish	✓					
• 40K btu Furnace	✓					
• 15K btu AC	✓					
• 12 Gallon Water Heater	✓					
• Halogen Interior Lighting Package	✓					
• Decorative, Residential Light Fixtures	✓					
• Hide-a-Bed Sofa	✓					
• Zero Wall Recliner(s)	✓					
• Day/Night Shades	✓					
• Howard Miller Designer Clock	✓					
• Premium Residential Carpet with 6 lb. rebond carpet pad	✓					
• OTR Convection Microwave Oven with Turntable (vented to exterior)	✓					
• Sealed Burner Range with Large Oven	✓					
• Water Filtration System	✓					
• Free-Standing Table & Chairs	✓					
• Premium Pillowtop Mattress	✓					
• 6'7" of Headroom Throughout Bedroom!	✓					
• Washer/Dryer Prep - Stackable Unit	✓					
• Porcelain Toilet	✓					
• 36" 1-pc. Fiberglass Shower w/Seat	✓					

**No Other Fifth Wheel Can Match Grand Junction's Features & Value!**

2164 Caragana Court • Goshen, IN 46526 • Sales: 574-534-1224  
 Fax: 574-975-0601 • Parts, Service & Warranty: 574-537-0700

**www.grandjunction-rv.com**

**YOUR LOCAL DEALER**

Limited Warranty • Two years structural and appliance • One year hitch to bumper • See owners manual for more information

Vehicle loading - Every effort has been made to provide the greatest number of options for the recreational vehicle owner. Along with these choices comes the responsibility to manage the loads that are imposed by the choices that they remain within the manufacturer's specified chassis weight limits. Do not overload the recreational vehicle. Some optional equipment not included. Net carrying capacity (NCC) is determined by subtracting unloaded vehicle weight (UVW) from gross vehicle weight (GVWR) and includes fluids, options and cargo. Liquid capacities and weights are approximations only. Warning - This information is intended as a guide only. Weights of individual vehicles may vary. Consult your owner's manual for complete loading, weighing and towing instructions. \*UVW and Hitch Dry Weight are base weights of units without options. Each unit includes a weight label which lists specific weight information for that unit. Product information, specifications, and photography in this brochure were as accurate as possible at time of printing. Photographs may contain some features that are optional on your vehicle. Since we continually strive to improve our products, actual products may differ. Prices and specifications are subject to change without notice. All capacities are approximate and dimensions are nominal. Some features or options may be different or unavailable in Canada. Vehicles are designed for recreational use only and not intended for use as a primary residence. All product brand names used in this brochure are registered trademarks of Thor Industries Inc. Unauthorized use of trademarks is prohibited by law.