

 **SUNCRUISER**

2007



 **SMARTSPACE**
WEB**THE BEST GETS BETTER.**

Innovative designs. Six distinct models. And more standard features than ever before. It's no wonder so many people love the Itasca SunCruiser.[®] Every model is created with our SmartSpace™ design philosophy that encourages innovation to make the most of interior space, including

an impressive 7'2.5" interior height. The 35A, shown here, has two front slideouts and the 38T features a forward-galley layout and a standalone entertainment center with an available electric fireplace. If you want the best in Class A comfort and amenities, you'll find it in the 2007 Itasca SunCruiser.

START LIVING

Bring the latest in home entertainment with you wherever you go. SunCruiser comes with a 27" Sony® flat-face TV and Home Theater Sound System with DVD player that provides a premium cinematic experience.

An available in-motion digital satellite dish captures satellite programming while you're on the road. Add the 600-watt inverter and you'll have power even when you're not running the generator.

Select the 38T and enjoy the most square feet of living space ever available in a SunCruiser. The Home Comfort Plus Package comes standard on all models, providing an auxiliary automotive heater, insulated power roof vents and a heat pump that can warm your coach on cool mornings without using the LP furnace.



38J BUTTER BRICKLE WITH CONCERT CHERRY

ENTERTAINMENT CENTER Three models feature a standalone entertainment center. The 38T even offers an available electric fireplace you can enjoy from the hoop-base recliner.

WEB Select a Key Feature

The **WEB** icon designates a Winnebago Industries Key Feature. For further in-depth information and photos, use this drop-down menu or click on the 'Key Features' page at winnebagoind.com.



LOUNGE AS YOU PLEASE Furniture options include the A) J-lounge with power recliner (38J only), B) Rest Easy® multi-position lounge that changes from a couch to a recliner to a comfortable bed at the touch of a button and C) the UltraLeather™ Euro Chair with ottoman.



FULL-EXTENSION DRAWER SLIDES Everything in your drawers is 100% accessible.



WASTEBASKET We pay attention to the smallest details, even adding formed handles to the wastebasket so it can accommodate plastic grocery bags.

AN INVITING GALLEY

Indirect lighting helps illuminate a galley that is as stylish as it is functional. Topping the list of amenities is the exclusive new Titanium Touch stainless finish refrigerator/freezer doors.

You can cook almost anything on the three-burner range or in the microwave/convection oven with range fan. Plus, plentiful cabinetry, a slideout pantry and drawer storage with full-extension slides hold all your food and supplies. The water filtration system includes a separate galley faucet.

Depending on the model you select, you'll be able to choose between a freestanding dining table or the BenchMark™ full comfort dinette.

GALLEY Beautiful cabinetry in your choice of wood complements the durable and attractive solid-surface countertops.

REFRIGERATOR The refrigerator doors feature a Titanium Touch stainless finish that has the look of stainless steel, resists fingerprints and is warmer to the touch than traditional stainless steel. As an added benefit, you can even use your favorite kitchen magnets.



DINING TABLE An available freestanding table comes in a round or oval design with drop leaves, offering a more residential dining experience (standard on 38J).



WEB BenchMark™ This full comfort dinette features innerspring cushions, large, easy-to-use flip-up storage compartments and a child safety-seat tether. It even converts easily into a comfortable bed (NA 38J).

A BETTER BEDROOM

A bedroom slideout is standard, creating a spacious room with a cedar-lined wardrobe and a walk-around queen-size bed. A king-size bed is available in the 35L. If you like to catch the news before bed, you'll appreciate the 20" flat-face TV in the bedroom (24" in the 37B). A rear stereo system is also available, including AM/FM radio, CD/DVD player, an MP3 input and an alarm clock. You'll also find a phone jack near the bed.

The bathroom has a spacious design that allows for more storage and an abundance of residential features. In the shower, you'll notice the temperature remains constant even if the water pressure fluctuates, thanks to the Moen Posi-Temp® valve.



BEDROOM A cedar-lined wardrobe and a flat-face TV come standard in every floorplan.



WEB SLEEP NUMBER BED

The available Vantage Point Sleep Number® Bed by Select Comfort™ includes digital hand controls that let you quickly adjust the firmness of each side of the mattress to your Sleep Number — the Key to a Perfect Night's Sleep.™



WASHER/DRYER Do laundry in the comfort of your SunCruiser when you add the washer/dryer combination (NA 33V or 35L with king-size bed).



BATH The bathroom is spacious and well designed to make you feel more at home. Choose the available shower upgrade package for a fold-down shower seat and a handheld showerhead.

DRIVE SAFELY

Suncruiser puts you at ease behind the wheel with features like the rearview monitor with one-way audio. The available video camera system is activated by your turn signal and allows the driver to view the side of the coach through the rearview monitor system for added peace of mind when turning and maneuvering.

The driver and passenger will also enjoy the RV Radio.[®] It includes AM/FM stereo, CD player, weather band, large, easy-to-use buttons and knobs and two remotes – one steering-wheel mounted and one handheld that allows you to enjoy the RV Radio when parked. Upgrade your RV Radio with the available Sirius* Satellite radio package. Sirius brings you 120 channels of crystal clear programming and a free six-month subscription.

Long rides fly by in the high-back cab seats with available UltraLeather.[™] A six-way power assist seat pedestal is also available for extra driving comfort. Other driver conveniences include map lights and available powered sunvisors.

*Sirius Satellite radio not available in Canada.



DASH Designed with ergonomic styling, the dash places controls right at your fingertips, including a steering wheel remote for the RV Radio.



WEB POWERLINE[®] This energy management system monitors electrical usage and automatically cycles appliances on and off to prevent power overloads.



WEB TRUEAIR[™] The TrueAir[™] residential central air conditioning system cools 40% faster and runs 10% quieter than roof airs. The key is a Coleman[®]-Mach[®] cooling unit located in the basement for a lower vehicle profile.



WEB ONEPLACE[™] This complete systems center places frequently used switches, gauges and controls in one convenient location.



WEB TRUELEVEL[™] Eliminate the guesswork when it comes to tank levels with our exclusive TrueLevel[™] holding tank monitoring system. It incorporates detector cells that read liquid levels from outside the tank. No probes means no more corrosion, just accurate readings time after time.



WORKSTATION Great for a laptop computer, the workstation slides forward to access a storage compartment.

LOOK SHARP

You'll turn heads everywhere when you pull in with an Itasca Suncruiser sporting one of the available full-body paint schemes and stylish front and rear caps. If you want to bring your favorite towables, the 5,000-lb. hitch with seven-pin wiring connector makes it easy. The side mirrors have a breakaway design that provides extra clearance for the campground or storage.

Once you've settled on a spot, the exclusive one-touch hydraulic leveling jack system will have your coach level in seconds. You'll be relaxing beneath the awning in no time.

Hookups are a snap in the service center featuring colored labels and the QuickPort® service connection hatch. QuickPort lets you easily hook up connections and then allows the bay door to fully close. The electrical center contains a connection for a portable satellite system.



WEB STOREMORE Most exterior compartments extend with the slideroom for easy access to your belongings thanks to the StoreMore® slideout system. You'll never crawl on your hands and knees to get your gear again.



EXTERIOR ENTERTAINMENT CENTER

Includes a CD player, AM/FM radio, two speakers, 12-volt powerpoint, 110-volt outlet and a removable table (NA 38T).



HYDRAULIC JACKS New for 2007: our exclusive three-position hydraulic switching system. Control your jacks from the A) driver's seat, B) entrance door or C) service center. Watch the jacks as you lower them from the entrance door or service center for perfect placement on jack pads.

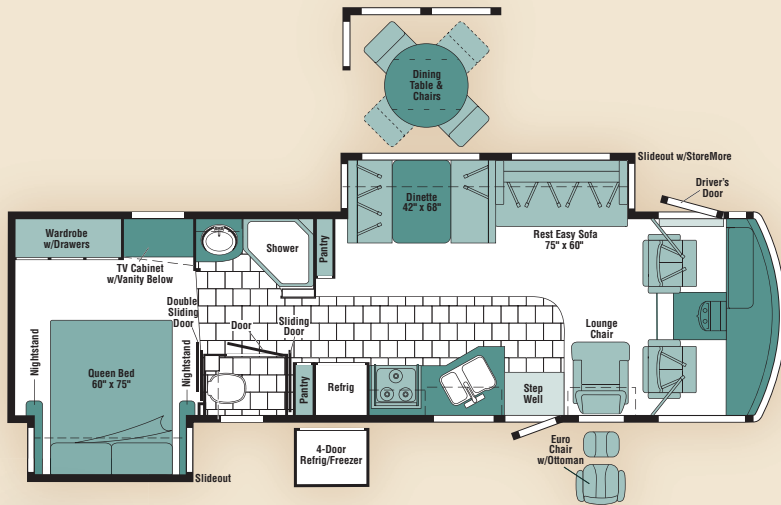


SERVICE CENTER Spend less time hooking up your Suncruiser with the QuickPort® hatch and the QuickConnect® coupling valve. QuickConnect even includes its own holster for storage. The service center also houses a wash station and a full-coach water filtration system.

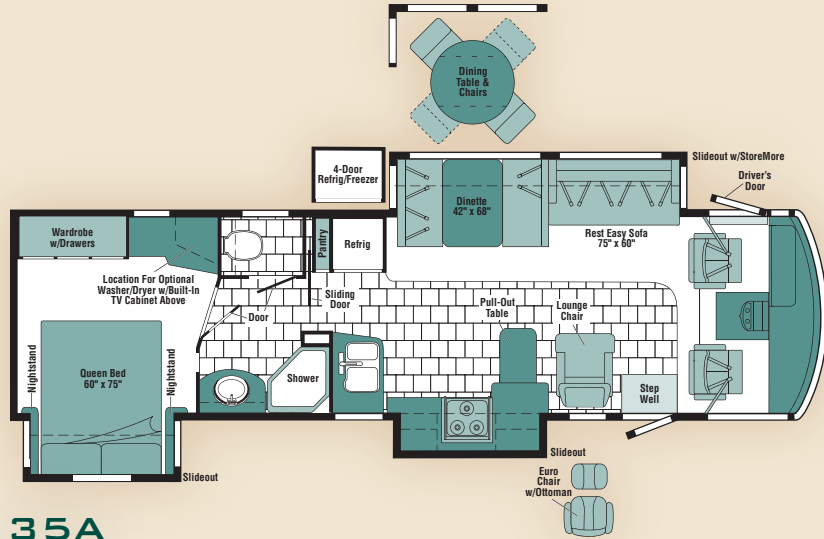
Carpet
 Vinyl Tile Floorcovering

 Seat Belts

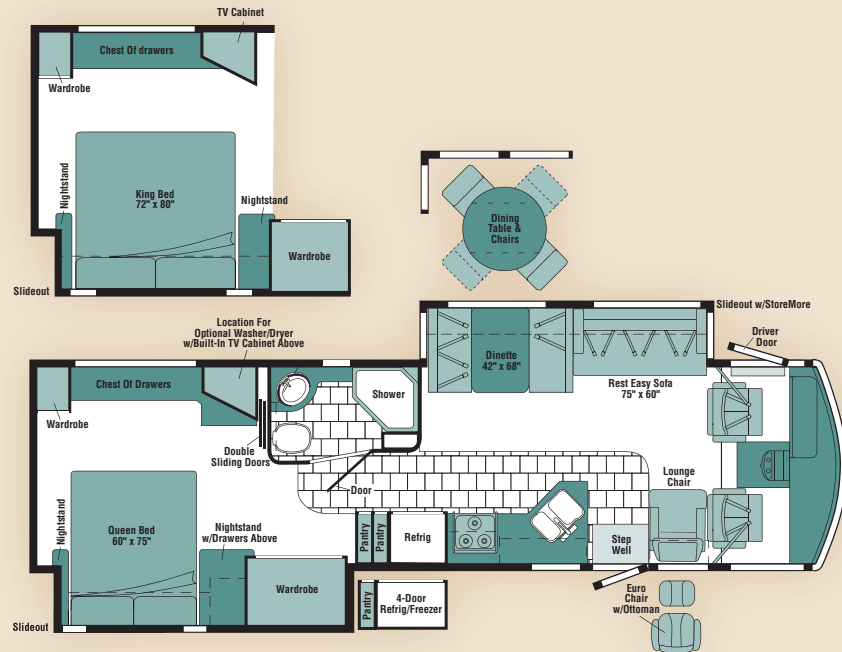
Note: Dimensions shown are for sleeping space only and may vary due to styling differences. Dashed lines denote overhead storage areas.



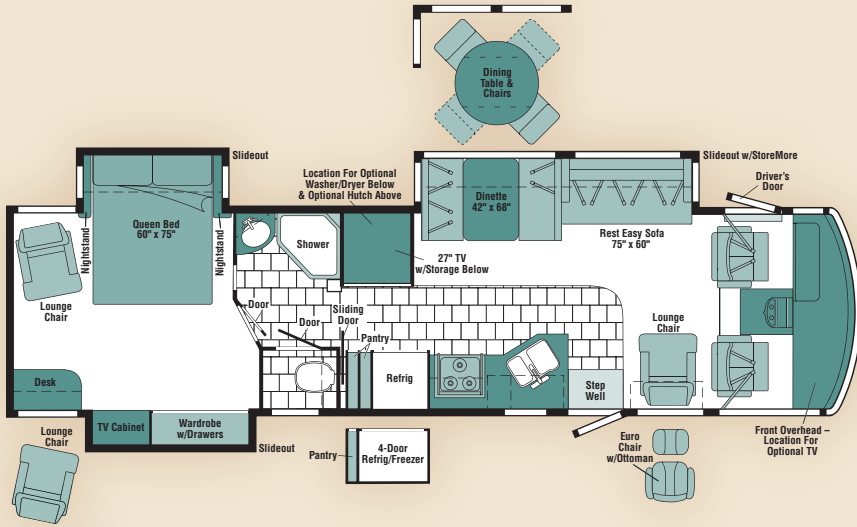
33V



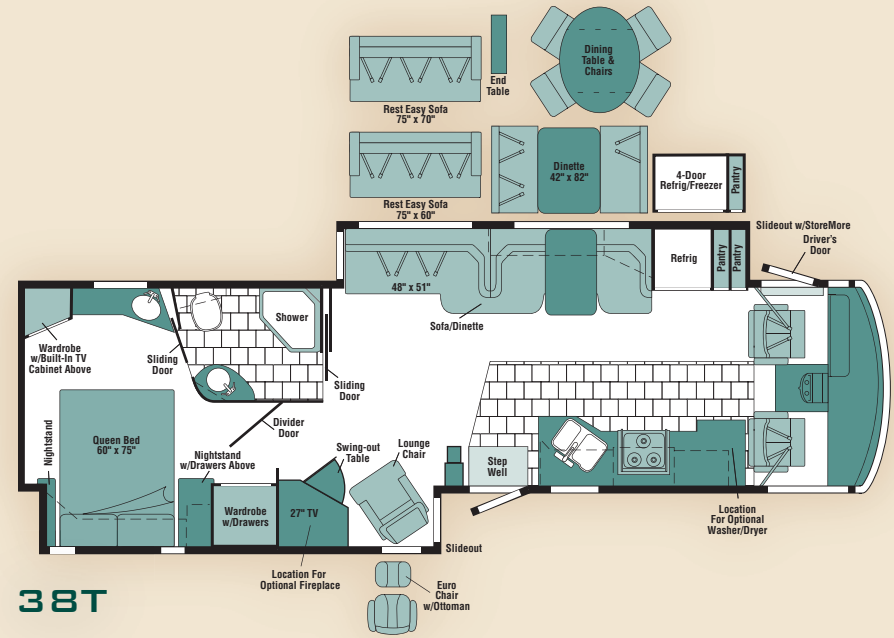
35A



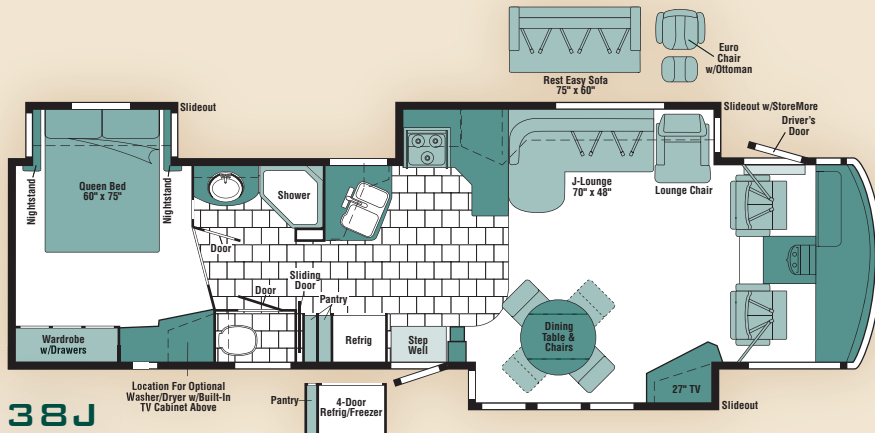
35L
NEW



37B



38T



38J

SUNCRUISER SPECIFICATIONS

2007

WEIGHTS & MEASURES	33V	35A	35L NEW	37B	38J	38T
Length	33'7"	35'11"	36'	38'1"	38'10"	38'9"
Exterior Height ¹	12'2" ^A / 12'1" ^B	12'2" ^A / 12'2" ^B / 12'2" ^C	12'2" ^A / 12'2" ^B / 12'1" ^C	12'1" ^C	12' ^C	12'1" ^C
Exterior Width ²	8'5.5"	8'5.5"	8'5.5"	8'5.5"	8'5.5"	8'5.5"
Exterior Storage ³ (cu. ft.)	68.8	93.1	87.5	107.4	97.4	116.9
Awning Length	18'	20'	15'	19'	19'	13'
Interior Height	7'2.5"	7'2.5"	7'2.5"	7'2.5"	7'2.5"	7'2.5"
Interior Width	8'0.5"	8'0.5"	8'0.5"	8'0.5"	8'0.5"	8'0.5"
Freshwater Capacity w/Heater ⁴ (gal.)	86	88	86	88	88	88
Holding Tank Capacity - Black/Gray ⁴ (gal.)	55 / 43	50 / 75	65 / 49	50 / 58	51 / 53	53 / 70
LP Capacity ⁵ (gal.)	28	28	28	28	28	28
Fuel Capacity (gal.)	75	75	75	75	75	75
GCWR ⁶ (lbs.)	26,000 ^A / 26,000 ^B	26,000 ^A / 26,000 ^B / 30,000 ^C	26,000 ^A / 26,000 ^B / 30,000 ^C	30,000 ^C	30,000 ^C	30,000 ^C
GVWR (lbs.)	22,000 ^A / 22,000 ^B	22,000 ^A / 22,000 ^B / 24,000 ^C	22,000 ^A / 22,000 ^B / 24,000 ^C	24,000 ^C	24,000 ^C	24,000 ^C
GAWR - Front (lbs.)	7,500 ^A / 8,500 ^B	7,500 ^A / 8,500 ^B / 9,000 ^C	7,500 ^A / 8,500 ^B / 9,000 ^C	9,000 ^C	9,000 ^C	9,000 ^C
GAWR - Rear (lbs.)	14,500 ^A / 15,000 ^B	14,500 ^A / 15,000 ^B / 15,500 ^C	14,500 ^A / 15,000 ^B / 15,500 ^C	15,500 ^C	15,500 ^C	15,500 ^C
Wheelbase	208"	228"	228"	248"	248"	266"

AUTOMOTIVE/CHASSIS	33V	35A	35L	37B	38J	38T
A Ford® Chassis – 6.8L Super-Duty V10 SOHC Triton® engine, 362-hp, TorqShift™ 5-speed overdrive transmission, 130-amp. alternator, 4-wheel ABS, Tires 22.5", Wheels stylized aluminum	S	S	S			
B Workhorse™ Chassis – 8.1L Vortec V8, 340-hp, Allison® 1000 Series™ 6-speed electronic overdrive transmission, 145-amp. alternator, 4-wheel ABS, Steering Wheel custom, Tires 22.5", Wheel Liners stainless steel	0	0	0			
C Workhorse Chassis – 8.1L Vortec V8, 340-hp, Allison 2100 Series 6-speed electronic overdrive transmission, 145-amp. alternator, 4-wheel ABS, Steering Wheel custom, Tires 22.5", Wheel Liners stainless steel	0	0	S	S	S	
Leveling Jacks HWH® hydraulic, w/3-way switching system, Trailer Hitch ® 5,000-lb. drawbar/500 lbs. maximum vertical tongue weight & 7-pin wiring connector	S	S	S	S	S	S
Wheels stylized aluminum (Workhorse chassis)	0	0	0	0	0	0

CAB AREA & DRIVER CONVENIENCES	33V	35A	35L	37B	38J	38T
Cab Seats (Fabric) multiposition armrests, headrest, manually adjustable lumbar support, multiadjustable swivel/slide/recline, Cab Sound Control Package , Cigarette Lighter/12-Volt DC Powerpoint , Convenience Tray , Cruise Control , Door driver w/ power window, assist bar, KeyOne™ System (common key w/entrance door & exterior storage compartments), trim panel w/beverage holder, storage pocket, power mirror controls, Courtesy Light , Map Lights , Monitor System b/w rearview w/single camera & 1-way audio, Shades front wraparound, Trim Panel passenger side w/beverage holder, storage, 12-volt DC powerpoint, switch appliqué, Steering Wheel tilt w/power-assist, Sunvisors (2) , Window (Passenger) full-slider w/screen, dual-glazed/thermo-insulated, Windshield Wipers intermittent, Workstation in-dash	S	S	S	S	S	S
Cab Seats (UltraLeather™) , Cab Seat Pedestal 6-way power-assist (driver), Defroster Fans (2) auxiliary 2-speed w/instrument panel switch, Sunvisors (2) powered, switch, Video Camera System side-mounted cameras (2)	0	0	0	0	0	0

ENTERTAINMENT	33V	35A	35L	37B	38J	38T
C.B. Prep 12-volt DC powerpoint, Entertainment Center w/CD Player (Exterior) DC receptacle, AC duplex receptacle, AM/FM radio w/remote, radio antenna, speakers (2), lockable compartment, removable table (NA 38T), Home Theater Sound System amplifier, DVD, receiver, speakers (5), subwoofer, RV Radio® (Cab) AM/FM/stereo/CD player w/weather band, remotes (one hand-held/one steering wheel mounted), roof-mounted flexible rubber antenna, Radio Power Switch main/auxiliary battery, Satellite System Ready , Telephone input & interior jacks, TV Enhancement Package antenna (amplified), interior jacks, exterior jack, coax wiring, cable input, Video Selection System	S	S	S	S	S	S
Compact Multidisc Changer , Satellite Dish Antenna RV digital, elevation sensing unit, manual or power, Satellite System RV digital, in-motion, King-Dome®, Satellite Radio Sirius® (NA in Canada, includes 6-month subscription), Stereo System (Rear) AM/FM/CD/DVD player, alarm clock, front TV jack (plays MP3)	0	0	0	0	0	0
Entertainment Center TV 27" flat-face, stereo color AC w/remote, Sony®				S	S	S
TV 20" flat-face, color AC w/remote, bedroom, RCA, storage shelf	S	S	S		S	S
TV 24" flat-face, color AC w/remote, bedroom, Sony					S	
TV 27" flat-face, stereo color AC w/remote, Sony, front overhead	S	S	S	0		
TV 27" flat-face, stereo color AC w/remote, Sony, hutch cabinet, remote extender				0		

INTERIOR	33V	35A	35L	37B	38J	38T
Ceiling vinyl, Countertops solid-surface, galley & bath, Lights ceiling, incandescent, bath, bedroom w/wall switches, Light decorative oval, Lights fluorescent, recessed, galley & lounge w/wall switches, Lights reading, Mini Blinds galley & bath, Shades day/night pleated, lounge, dinette & bedroom, Windows flush-mounted/dual-glazed/thermo-insulated	S	S	S	S	S	S
Fireplace electric						0

FURNITURE	33V	35A	35L	37B	38J	38T
Dining Table & Chairs freestanding (2), folding (2)	0	0	0	0	S	0
BenchMark™ Full Comfort Dinette access to storage below	S	S	S	S		0
Lounge Chair (UltraLeather) hoop-base, Rest Easy® Multi-Position Lounge (Fabric or UltraLeather) dual-control, 75" x 60", Lounge Chair (UltraLeather) Euro Chair w/ottoman	0	0	0	0	0	0
Lounge Chair (Fabric) hoop-base, recliner, rocker, footrest	S	S	S	S	S	S
Rest Easy Multi-Position Lounge (Fabric) throw pillows	S	S	S	S	0	
Rest Easy Multi-Position Lounge (Fabric) power recliner, dual-trundle storage, end table, throw pillows 75" x 70"						0

FURNITURE	33V	35A	35L	37B	38J	38T
Rest Easy Multi-Position Lounge (UltraLeather)	0	0	0	0	0	0
Sofa (Fabric) J-lounge, power recliner, drawer below						S
Sofa (UltraLeather) J-lounge, power recliner, drawer below					0	
Sofa/Dinette (Fabric) access to storage below, folding chairs (2), single footrest on sofa						S
Sofa/Dinette (UltraLeather)						0

GALLEY	33V	35A	35L	37B	38J	38T
Cutting Board slideout, Faucet single-control w/pullout sprayer, Light undercabinet, Lights indirect, Microwave/Convection Oven w/vented range fan, touch control, stainless steel, Sharp® Pantry(ies) , Range Top 3-burner w/storage below & backsplash, sealed burners, 1 w/high output, Amana® Range Cover , Refrigerator/Freezer large double-door, Titanium Touch stainless finish, Norcold® Wastepaper Basket , Water Filtration System w/separate faucet	S	S	S	S	S	S
Appliance Storage Cabinet(s) , Decorative Storage Cabinet		S				
Countertop Flip-Up Extension(s)	S	S	S	S	S	
Range 3-burner w/large oven, recessed, sealed burners, 1 w/high-output, Amana , Refrigerator/Freezer large double-door w/icemaker, 4-door w/icemaker, Titanium Touch stainless finish, Norcold	0	0	0	0	0	0

BATH	33V	35A	35L	37B	38J	38T
Cabinet lavatory, Cabinet medicine, Faucet (Lavatory) single-control, Faucet (Shower) single-control, fixed showerhead w/Moen Posi-Temp®, Light shower, Lights makeup, Shower Door textured glass	S	S	S	S	S	S
Shower Package handheld showerhead, fold-down shower seat	0	0	0	0	0	0

BEDROOM	33V	35A	35L	37B	38J	38T
Bed queen, innerspring mattress w/underbed storage, Bedsprad , Lights decorative wall lamps, Pillows , Powerpoint 12-volt DC receptacle(s), Throw Pillows	S	S	S	S	S	S
Bed king, innerspring mattress			0			
Bed king, Sleep Number® by Select Comfort™ remote holders			0			
Bed queen, Sleep Number by Select Comfort, remote holders	0	0	0	0	0	0
Wainscoting w/chair rail	S	S	S		S	S

EXTERIOR	33V	35A	35L	37B	38J	38T
Awning patio, Awning Rails rain gutters, Door entrance w/separate screen door, deadbolt lock, Door fuel-fill, Entrance Door Steps triple, electric w/doorjamb switch, Ladder , Light porch w/interior switch, Light driver side, service, Mirrors electric, remote w/defrost, breakaway design, Mudflaps front & rear, Receptacle AC duplex, Sidewall Skin 1-piece smooth fiberglass, high-gloss, Storage Compartments smooth valance panels, trunk liner, gas struts, TriMark® KeyOne™ System, paddle latch, lights, interior master light shut-off switch	S	S	S	S	S	S
Awning patio, electric w/wind sensor & remote, Front Protective Mask w/full-body paint	0	0	0	0	0	0

SYSTEMS	33V	35A	35L	37B	38J	38T
HEATING/AC – Automotive Heater/Air Conditioner, Home Comfort Plus Package central air heat pump, auxiliary automotive heater, insulated powered ventilator fans (bath & galley), TrueAir® Central Air Conditioning System	S	S	S	S	S	S
Furnace 35,000 BTU	S					
Furnace 40,000 BTU		S	S	S	S	S
ELECTRICAL – Auxiliary Start Circuit, Batteries (2) (Coach) Group 24 deep-cycle w/disconnect system, Converter/Charger 55-amp., electronic, Dual Battery charge control (automatic), Electrical Distribution System AC & DC breaker panels, Generator 5,500-watt, Onan® Marquis Gold™ gas, Generator/Shoreline Automatic Changeover Switch, OnePlace® Systems Center wall-mounted, battery digital voltmeter, energy management display, generator hourmeter gauge, generator start/stop switch, holding tank levels, LP tank level, solar panel/battery charger light, water heater switch & lights, water pump switch & light, water tank level, courtesy ceiling light, Power Cord 50-amp. flexible cord, PowerLine® Energy Management System, Service Center (Electrical) cable input, power cord, QuickPort service connection hatch, telephone input, portable satellite dish hookup, Solar Panel 10-watt battery charger	S	S	S	S	S	S
Inverter DC/AC, 600-watt	0	0	0	0	0	0
PLUMBING – Drain 1" water tank, Service Compartment (Drainage/Water) city water hookup/tank diverter fill, drainage valves, 3" gray water valve, exterior wash station w/pump switch, 10' sewer hose, QuickConnect® coupling valve, QuickPort® service connection hatch, Tank flushing system, black tank only, Tank holding, heated compartment, Tank LP, permanent mount w/gauge, TrueLevel™ Holding Tank Monitoring System, Water Heater 10-gallon electronic ignition, 120 VAC/LP gas w/motoraid, Water System Filtration Package housing, filter, wrench, Water System Winterization Package water heater bypass valve & siphon tube, Water Pump demand, permanent magnet motor w/diaphragm, Water Tank Fill pressurized city hookup w/diverter valve	S	S	S	S	S	S
Washer/Dryer Combination (NA 35L w/king-size bed)	0	0	0	0	0	0

SAFETY	33V	35A	35L	37B	38J	38T
Assist Bar interior, Assist Handle exterior, acrylic w/logo, Bumpers front & rear, Detectors/Alarms LP leak, smoke, carbon monoxide, Fire Extinguisher 10 BC, Ground Fault Interrupter , Lights high-mount brakelamps, Light courtesy w/wall switch, Lights daytime running lamps, fog, Seat Belts cab, 3-point, adjustable, Window escape, Windshield laminated safety glass	S	S	S	S	S	S
Child Seat Tether Anchor w/BenchMark dinette	S	S	S	S		S

WARRANTY ⁷	33V	35A	35L	37B	38J	38T
12-month/15,000-mile basic limited warranty;⁸ 36-month/36,000-mile limited warranty on structure;⁸ 10-year limited parts & labor warranty on roof skin⁸	S	S	S	S	S	S

- The height of each model is measured to the top of the tallest standard feature and is based on the curb weight of a typically equipped unit. The actual height of your vehicle may vary by several inches depending on chassis or equipment variations. Please contact your dealer for further information.
 - Suncruiser floorplans feature a wide-body design – over 96" in making your purchase decision, you should be aware that some states restrict access on some or all state roads to 96" in body width. Before making your purchase decision, you should confirm the road usage laws in the states of interest to you.
 - The load capacity of your motor home is designated by weight, not by volume, so you cannot necessarily use all available space when loading your motor home.
 - Capacities are based on measurements prior to tank installation. Slight capacity variations can result due to installation applications.
 - Capacities shown are tank manufacturer's listed water capacity (W.C.). Actual filled LP capacity is 80% of listing due to overfilling prevention device on tank.
 - Actual towing capacity is dependent on your particular loading and towing circumstances which includes the GVWR, GAWR, and GCWR as well as adequate trailer brakes. Please refer to the Operator's Manual of your vehicle for further towing information.
 - See separate chassis warranty.
 - See your dealer for complete warranty information.
- NA Not Available
S Standard
O Optional

Not all items available in combination. See dealer for details. Winnebago Industries® continuing program of product improvement makes specifications, equipment, model availability, and prices subject to change without notice. Comparisons to other motor homes are based on the most recent information available at printing.

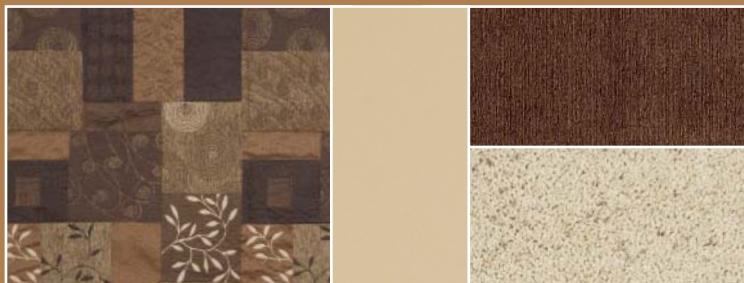
INTERIOR DECOR

Choose from three fabric selections
and three cabinet wood choices.

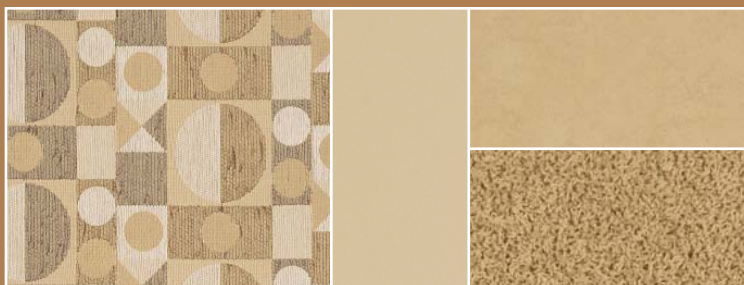
SOFA	ULTRA LEATHER	ACCENT
		CARPET



Irish Cream w/available Buff UltraLeather™



Cavalier w/available Buff UltraLeather



Butter Brickle w/available Buff UltraLeather



Concert Cherry



Washed Maple



Sierra Maple

EXTERIOR GRAPHICS



Metallic Gold



Dark Titanium Metallic

AVAILABLE FULL-BODY PAINT



Alpine Frost



Spice

Welcome to Winnebago Industries, Inc.

<http://www.winnebagoind.com/>

PRODUCTS RESOURCES COMPANY CLUBS/EVENTS CONTACT DEALERS ONLY **WEB** Select a Key Feature

Select a category from above.

Popular Links

- Winnebago RVs
- House RVs
- Key Features
- Dealer Locator



The 2007 coaches have arrived.

WINNEBAGO INDUSTRIES' FEATURED PRODUCTS

Introducing the 2007 House Impact™

TRUEAIR™
Cools 88% Faster,
While 10% Quieter!

SIRIUS™
Available Sirius Satellite Radio.
NA/Canada.

WINNEBAGOIND.COM Visit us on the web for more info on all of our motor homes and a host of web-exclusive content.

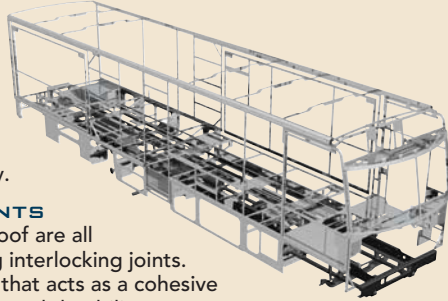


**BUILT BY WINNEBAGO INDUSTRIES.
BUILT TO LAST.**

Itasca motor homes are built by Winnebago Industries, the company that defined motor homes. The company that built its reputation on quality construction. The company that transformed the motor home concept into a way of life.

Today, Winnebago Industries brings that reputation for quality and its 48-year history of motor home innovation to the design and construction of every motor home. It's all a part of SuperStructure® our exclusive system of proprietary structural components that instills each motor home with improved strength and durability.

SOLID FOUNDATION Steel and aluminum truss work provides a solid, flat foundation for floors and sidewalls. Winnebago Industries engineers also take special care to distribute the weight of components to ensure proper handling and stability.



INTERLOCKING JOINTS
The floors, sidewalls and roof are all integrally connected using interlocking joints. This creates a coach body that acts as a cohesive unit for improved strength and durability.

E-COATING Winnebago Industries employs an exclusive 12-stage automotive-style dip tank process to apply an advanced electrodeposition coating on critical steel components for unmatched corrosion protection.



THERMO-PANEL® SIDEWALLS Invented by Winnebago Industries, Thermo-Panel construction combines a fiberglass panel, high-density, block-foam insulation and aluminum support structures to create some of the most durable, lightweight sidewalls in the industry.

ATTENTION TO DETAIL Whether it's sending every coach through a high-pressure water tunnel to check for leaks or labeling each individual wire and bar-coding parts to save time and frustration during service, Winnebago Industries considers every detail to ensure your Itasca motor home provides you with years of pleasure.

STRONG AS STEEL Appliances are secured directly to embedded steel plates for added safety. Windshields are also mounted in steel with an automotive-style sealant; lesser designs use a rubber gasket to mount the windshield in fiberglass.



1-year-old Itasca fiberglass roof



1-year-old competitor's rubber roof

FIBERGLASS ROOF The Suncruiser features a crowned, one-piece fiberglass roof, backed with a 10-year limited parts-and-labor roof skin warranty. Fiberglass offers superior strength, attractiveness and durability over the rubber roofs found on many competitive models which can chalk, streak and degrade over time. Fiberglass also provides increased puncture and tear resistance.



TAKE A TOUR We're proud of our process, state-of-the-art facilities and the people who make Winnebago Industries number one. We invite you to visit our factory in Forest City, Iowa, for a first-hand look at the dedication and technology behind every motor home we build.



RECOGNIZED QUALITY The Recreation Vehicle Dealer Association annually rates RV manufacturers and awards the Quality Circle award to manufacturers who provide exceptional products, service and support. Winnebago Industries is proud to be the only manufacturer to receive this award every year since its inception.



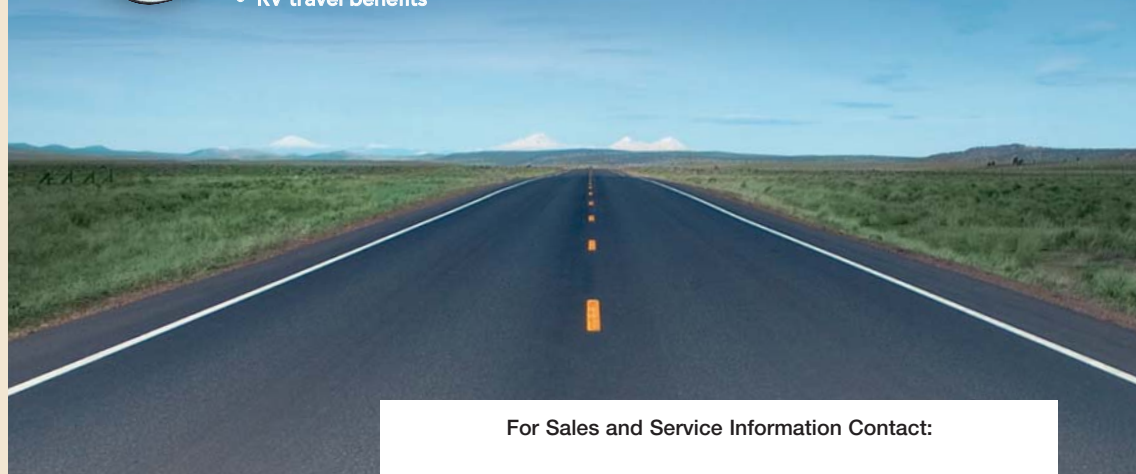
COMMITTED TO SERVICE We back our motor homes with the industry's best service after the sale.

- 12-month/15,000-mile basic limited warranty
- 36-month/36,000-mile limited warranty on structure
- Standard 10-year limited parts-and-labor roof skin warranty
- Complimentary 24-hour roadside assistance program
- TripSaver Fast Track Parts. TripSaver guarantees that in-stock warranty parts ship directly to your dealer within 24 hours.
- National dealer service network



WIT CLUB Itasca owners are like family. Joining the Winnebago-Itasca Travelers is a great way to meet and travel with other Itasca enthusiasts. Members enjoy:

- Caravans and rallies
- Local and state group activities
- RV travel benefits



For Sales and Service Information Contact:



Built proudly by



NYSE listing: WGO

©2006 Winnebago Industries, Inc.

Printed in USA

Seat belts are your most important hookup. Always buckle up.