

2007

PRESIDIO



 Mandalay
LUXURY DIVISION

2007 PRESIDIO

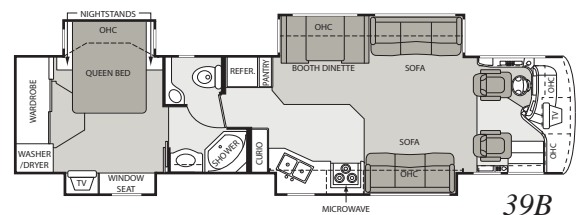
For those looking for more value in a luxury motorhome, the 2007 Presidio is in a class by itself. It offers more distinctive amenities—both inside and out—than ever before.

- New 39F floorplan with 29' full wall slide-out room
- Optional 32" LCD television in front overhead
- Contemporary interior decor packages
- Fluted glass cabinet doors above kitchen sink
- GE 1.7-cubic foot Stainless Steel microwave oven
- New Speckled Parchment Granite ABS shower surround
 - New exterior entertainment center with compact disc, radio and speakers
 - Motorized electric step cover
 - Standard Guardian RV Quietpact™ 7500-watt diesel generator
 - Side opening baggage doors between axles
 - Innovative full-body paint designs
 - Available on dependable Freightliner chassis

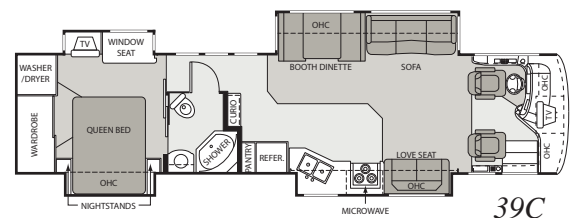
2007 PRESIDIO SPECIFICATIONS

MODEL	39B	39C	39D	39E	39F
WEIGHT RATING (LBS.)					
Freightliner XC Chassis-Mercedes MBE 926 engine	330-HP	330-HP	330-HP	330-HP	330-HP
Gross Vehicle (GVWR)	32,000	32,000	32,000	32,000	32,000
Gross Combined (GCWR)	42,000	42,000	42,000	42,000	42,000
MEASUREMENTS					
Wheel Base	252"	252"	252"	252"	252"
Exterior Length (without ladder)	39'5"	39'5"	39'5"	39'5"	39'5"
Exterior Height (with air conditioner)	12'9"	12'9"	12'9"	12'9"	12'9"
Interior Height	84"	84"	84"	84"	84"
Awning Size	20"	20"	11"	11"	11"
TANK CAPACITIES					
Fuel (gallons)	100	100	100	100	100
LPG (pounds)	110.5	110.5	110.5	110.5	110.5
Fresh Water (gallons)	90	90	90	90	90
Waste Water (gallons)	68	68	68	68	68
Gray Water (gallons)	70	70	70	70	70
Water Heater (gallons)	10	10	10	10	10
Furnace (BTUs)	40,000	40,000	40,000	40,000	40,000

FLOORPLANS



39B



39C

DIO

Cashmere Cream
full-body paint
package option



Copper Canyon
full-body paint
package option



Moonlight
full-body paint
package option



Royal Suede
full-body paint
package option



Garnet standard
graphics/partial
paint package



Sand Castle
standard graphics/
partial paint package

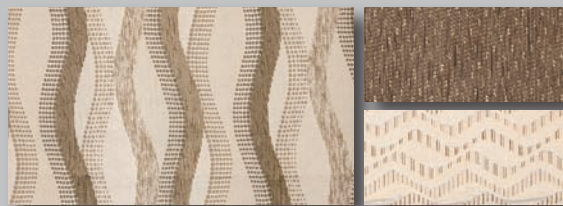


Slate standard
graphics/partial
paint package



INTERIOR DECOR

Biscotti



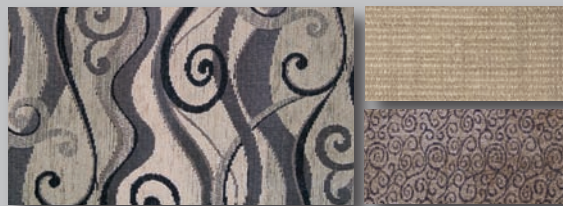
Chocolate Cafe



Sandalwood



Sterling



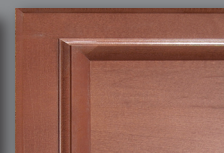
CABINETRY CHOICES



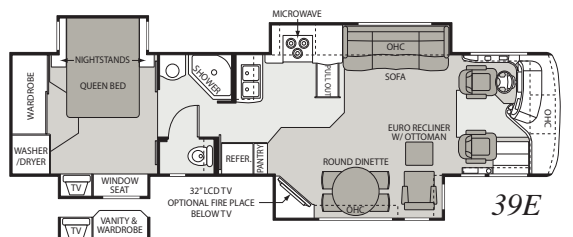
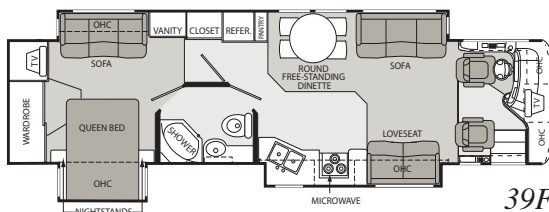
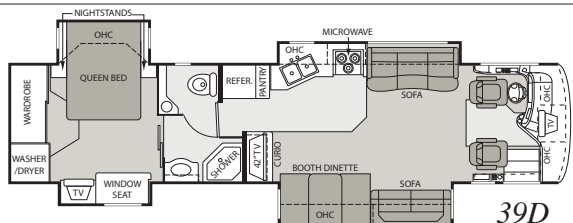
Standard Oak



Optional Maple



Optional Cherry



VEHICLE LOADING: Every effort has been made to provide the greatest number of options for the recreational vehicle owner. Along with these choices comes the responsibility to manage the loads that are imposed by the choices so that they remain within the manufacturer's specified chassis weight limits. Do not overload the recreational vehicle.

DRY WEIGHTS: Based on standard features; optional equipment not included. Net carrying capacity (NCC) determined by subtracting unloaded vehicle weight (UVW) from gross vehicle weight, (GVWR) and includes fluids, options, and cargo. Liquid capacities and weights are approximations only.

WARNING: This information is intended as a guide only. Weights of individual vehicles may vary. Consult your owner's manual for complete loading, weighing, and towing instructions.

IMPORTANT: Towing capacity may vary by chassis model, floorplan, options and loading of the vehicle. This may result in a towing capacity which is less than the maximum capacity of the hitch. Do not exceed the vehicle's

Gross Combined Weight Rating (GCWR), or the hitch rating. A separate functioning brake system is required for any towed vehicle or trailer weighing more than 1,000 lbs. (450 KG) when fully loaded.

Product information, specifications, and photography in this brochure were as accurate as possible at time of printing. Photographs may contain some features that are optional on your vehicle. Since we continually strive to improve our products, actual products may differ. Prices and specifications are subject to change without notice. All capacities are approximate and dimensions are nominal. Some features or options may be different or unavailable in Canada.

2007 PRESIDIO FEATURES

BODY CONSTRUCTION/ EXTERIOR

Standard

- 29' full wall slide (39F only)
- One-piece windshield with steel cage construction
- 3" steel framed laminated floor
- Aluminum frame sidewalls and roof
- Gelcoat fiberglass exterior walls
- Front and rear molded fiberglass cap
- Exterior paint and vinyl graphics package
- Chrome exterior mirrors with remote and heat
- Baggage doors with integrated single handle latches
- Side opening exterior baggage doors between axles
- Fiberglass lined storage compartments
- Electric slide locks

Options

- Full-body paint packages
- 3M film front mask
- Full pass-through slide-out storage tray

CHASSIS

Standard

- Freightliner XC chassis with 330-HP Mercedes MBE 926 diesel engine**
- Cummins ISC 330-HP diesel engine with exhaust brake**
- Allison MH 3000 six-speed automatic transmission
- 10,000-lb. hitch receiver and 6-point connector
- 100-gallon fuel capacity with dual fills
- Full air suspension and brakes
- Aluminum wheels with 275/70R 22.5" tires

COCKPIT

Standard

- Adjustable brake and accelerator pedals*
- Oversized AM/FM radio with large buttons, compact disc and cassette player, and weather band
- VIP Smart steering wheel, includes cruise and wiper controls
- Motorized electric step cover*
- Flexsteel® Infiniss™ Leather driver and passenger seats
- Power six-way driver seat
- Four-point, automatic hydraulic leveling system
- Driver and passenger map lights

- Dash fans
- Power sun visors
- Air horns

Options

- Manual pull-down driver's side sun shade
- Flexsteel® Infiniss™ Leather six-way power passenger seat with footrest
- Flexsteel® Infiniss™ Leather extra-wide six-way power passenger seat with footrest
- Visteon® satellite-ready Sirius™ AM/FM dash radio with six disc compact disc changer
- Cobra® citizen's band radio

INTERIOR

Standard

- Full 84" interior ceiling height
- Decorative rope accent lighting*
- Porcelain tile floor in entry way, kitchen and bathroom
- Solid wood raised panel cabinet doors with hidden hinges
- Oak cabinetry
- Hardware with Brushed Nickel finish
- Day/night shades in living room
- Soft Touch vinyl ceiling
- Fluorescent ceiling lighting
- Fabric easy-bed sofa with drawer
- Fabric easy-bed loveseat (standard on 39C passenger side only)
- Leather Euro recliner with ottoman (39E only)

Options

- Cherry or Maple cabinetry
- Tile runway in living area
- Infiniss™ Leather easy-bed sofa with drawer
- Infiniss™ Leather easy-bed loveseat (39C passenger side only)
- Fabric magic-bed sofa (driver side on all; 39B and 39D passenger side only)
- Infiniss™ Leather magic-bed sofa (39B and 39D passenger side only)
- Fabric hide-a-bed sofa
- Infiniss™ Leather hide-a-bed sofa
- Infiniss™ Leather J-lounge (39B only)
- Leather Euro recliner and ottoman with computer desk
- Corner fireplace (39E only)

GALLEY

Standard

- 8-cubic-foot two-way refrigerator with ice maker and raised wood panels
- 3-burner high-output cooktop

- 30" Stainless Steel over-the-range residential size convection microwave oven (1.7-cubic feet)
- Flush mounted solid surface range cover
- Full height, solid surface backsplash*
- Solid surface countertop
- Full extension drawer guides
- Kitchen pantry with adjustable shelves (not available with optional 12-cubic foot refrigerator)
- Booth dinette with laminate table and solid surface edge (not available on 39E)
- Round free-standing dinette with two stationary and two folding chairs (39E only)

Options

- 12-cubic foot two-way refrigerator with ice maker and raised panel inserts
- 12-cubic foot two-way Stainless Steel refrigerator with ice maker
- 3-burner high-output range with oven
- Round dinette table with two stationary and two folding chairs (standard on 39E)
- Buffet dinette, two stationary and two folding chairs
- Water filter (kitchen only)
- Central vacuum system

ENTERTAINMENT & ACCESSORIES

Standard

- 42" LCD projection television with home theater system in entertainment center (39D only)
- 27" flat screen television in overhead with remote control (not available on 39E)
- 32" LCD flat screen television with home theater system in rear entertainment cabinet (39E only)
- 20" flat screen television in bedroom
- Television antenna, signal booster and video switch box
- Wired for digital satellite, cable television and telephone
- Rear-vision color monitor with one-way audio*

Options

- 32" LCD television in front overhead (not available on 39E)*
- Front overhead cabinet in place of television (39D only)
- Home theater system with DVD and recessed ceiling speakers (standard on 39D and 39E)

- Digital satellite system
- Exterior entertainment center with compact disc player and speakers
- Side vision camera system

BEDROOM/BATHROOM

Standard

- 60" x 80" pillow-top queen-size innerspring mattress
- Black-out shades in bedroom
- Washer/dryer prep
- Medicine cabinet with adjustable shelves, mirror and towel bars in bathroom
- Cosmetic vanity lights in bathroom
- Solid surface bath countertop with acrylic sink
- Shower with glass enclosure

Options

- Combination washer/dryer
- Vanity with stool in rear slide

SAFETY/CONVENIENCE

Standard

- Entry door with deadbolt lock
- Telephone jack
- Systems Control Center
- Smoke detector
- Fire extinguisher
- LPG detector
- Carbon monoxide detector
- Three-point seatbelts for the driver and passenger
- Deluxe acrylic lighted exterior grab handle

ELECTRICAL SYSTEMS

Standard

- Guardian RV Quietpac™ 7500 diesel generator (7500 watts)
- 50-amp, 120-volt distribution panel and power cord
- Energy management system
- Power entry step with light
- Storage compartment lights
- Side docking lights
- Fog lights
- 12-volt outlets in cockpit
- Computer hook-up with phone jack in dinette area

Options

- Onan® Quietdiesel™ 8000 generator (8000 watts)
- 2000-watt inverter with 100-amp charge and two additional 6-volt batteries
- Cold weather package
- Electric power cord reel

PLUMBING & LP GAS SYSTEMS

Standard

- 10-gallon LP gas/electric water heater system with DSI
- LP quick connect fitting for exterior grill*
- Water heater bypass valve
- Foot flush china toilet
- Systems compartment with easy access to hook-ups
- Holding tank rinsing system
- Exterior shower

WINDOWS, DOORS & AWNINGS

Standard

- Front entry door with removable screen
- Automatic patio awning
- Automatic front door awning
- Vinyl slide room topper awnings
- Dual pane windows

Options

- Bedroom window awning

HEATING, VENTS & AIR CONDITIONING

Standard

- 13,500 BTU front and rear low profile roof air conditioners
- Ducted 40,000 BTU electronic ignition furnace
- 20,000 BTU front and 30,000 BTU rear furnace (39F only)
- Attic fan in kitchen
- 12-volt roof vent in bathroom and kitchen
- Ducted in-floor heating

* Available on units built after December 31, 2006

** Due to 2007 EPA restrictions, engine rating may change without notice.



Mandalay
LUXURY DIVISION

P.O. Box 1486 • Elkhart, Indiana 46515-1486
Toll Free: 866-919-4444 • Fax: 574-522-4276

www.mandalaycoach.com

THOR
AMERICA'S BEST RV VALUE

© 2007 Mandalay Luxury Division
Litho USA 107-10M