

Mandalay

2007



 **Mandalay**
LUXURY DIVISION



Model 40B shown with Stone interior decor and Natural Cherry cabinetry.



Model 40G shown with Black Coral interior decor and Natural Cherry cabinetry. Also includes free-standing dinette with buffet and UltraLeather™ hide-a-bed sofa.

Mandalay. Made for those who demand world class luxury, extraordinary elegance and unequalled comfort in a Class A diesel motorhome. Once you step inside, you are surrounded by a total environment that offers the upscale amenities and captivating style like no other. And you won't find a better value anywhere.

Mandalay offers more than you'd expect from a Class A diesel motorhome, such as:

- ❖ A selection of spacious quadruple slide-out models
- ❖ Innovative floorplans including a living room entertainment center

- ❖ Designer interior decor packages and rich cabinetry wood choices
- ❖ Contemporary interior and exterior convenience features



Above: Model 40G shown with Mocha interior and Natural Cherry cabinetry.

Below: Model 40G shown with two Euro recliners and ottomans, and cabinet with convenient table-top.

Model 40F shown with round dinette, Stone interior and Natural Cherry cabinetry. Two large windows in front of the dinette provide additional natural light.

- ❖ Plenty of storage—inside and out—for all of your personal belongings
- ❖ Distinctive exterior full-body paint packages

All built on the dependable Freightliner chassis which provides a solid foundation, superior safety and driving comfort. As a result, you can customize your new Mandalay to meet your needs, taste and lifestyle.



Above: Model 40B shown with Black Coral interior decor and Natural Cherry cabinetry.

Lower right: Model 40F shown with Stone interior and Natural Cherry cabinetry.



After a full day of activities, you can surround yourself in the privacy of your cozy bedroom. It features a bed with a pillow-top mattress for added sleeping comfort.

Color coordinated accessories and hardwood mirrored headboard add a touch of style and elegance. The handy nightstands provide additional storage for small items.

The bedroom vanity features a roomy countertop, large mirror and upholstered stool. It is the perfect place to get ready and begin a day of exciting adventures. Day/night shades keep the room dark when you want to sleep and enhance your privacy.

The bathroom features a solid surface bath countertop with integrated sink, decorative faucet and plenty of storage underneath. The medicine





Model 40B shown with Black Coral interior decor and Natural Cherry cabinetry.

cabinet has a mirrored front and adjustable shelves inside for your personal items.

Whether you're on the road or at your final destination, Mandalay has integrated many comfort and convenience features to enhance your lifestyle. For example, side opening

baggage doors provide plenty of below floor storage, and are easy to access—even when the slide-outs are extended. The automatic electric patio awning provides added protection when entertaining outdoors.



An optional exterior entertainment center features an LCD television, AM/FM radio with compact disc player and speakers.



The convenient slide-out freezer option located in the exterior storage bay keeps bulky frozen items cold and secure.



A 50-amp power cord reel provides easy storage of the power cord during and after use.



The lighted and heated termination station is easily accessible. Phone, cable, electrical and plumbing connections are quick and easy to make.



Roomy storage bays feature side-opening compartment doors with adjustable gaskets for easy storage access.

EXTERIORS



Brandywine Edition



Platinum Edition



Saber Edition

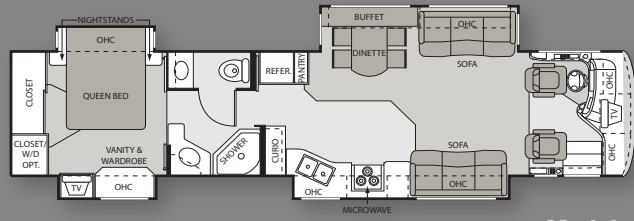


Fossil Edition

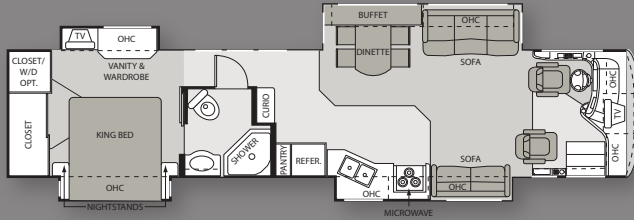


Sienna Edition

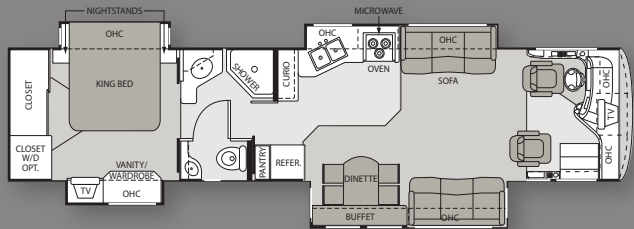
FLOORPLANS



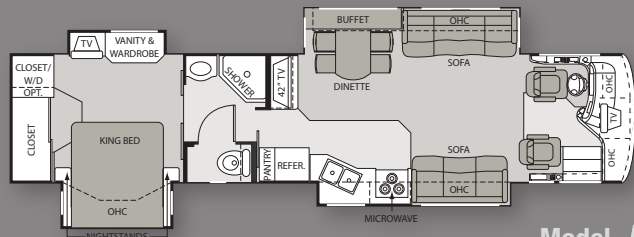
Model **40B**



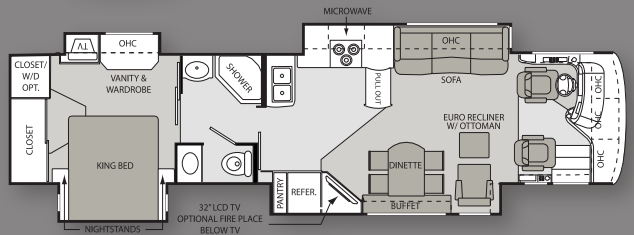
Model **40E**



Model **40F**

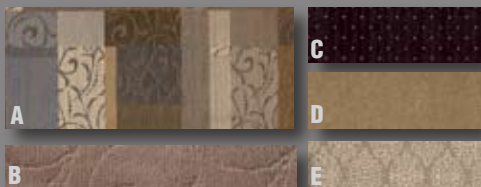


Model **40G**

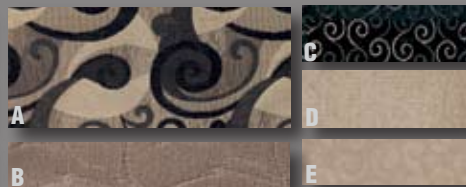


Model **40H**

INTERIOR DECOR



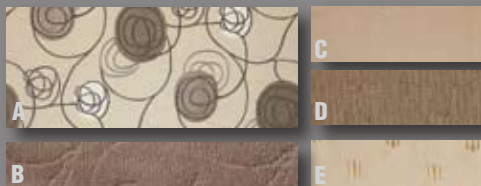
Antique



Black Coral



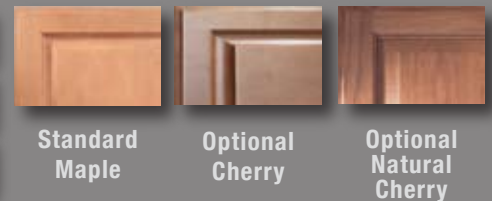
Mirage



Mocha



Stone



Standard Maple

Optional Cherry

Optional Natural Cherry

Key: A. Main living area B. Carpet C. Window treatment D. Recliner, dinette surround E. Bedroom

MANDALAY STANDARD AND OPTIONAL FEATURES

BODY CONSTRUCTION EXTERIOR

STANDARD

- One-piece windshield with steel cage construction
- 3" steel framed laminated floor
- Aluminum frame sidewalls and roof
- Molded fiberglass roof cap
- Chrome exterior mirrors with remote and heat
- Recessed docking lights
- Fog lights
- Hydraulic generator slide-out tray
- Full-body paint package
- Automatic compartment lights
- Fiberglass lined storage compartments
- Side opening exterior compartment doors
- Full pass-through slide-out storage tray
- Power entry step with light
- Electric power slide locks
- Full-length mud flap with Mandalay logo

OPTIONS

- 3M film front mask
- Basement refrigerator/freezer on slide-out tray
- Roof-mounted spotlight with remote control
- Windshield privacy screen

CHASSIS

STANDARD

- Freightliner XC raised rail chassis
- 400 Cummins ISL diesel engine with two-stage compression brake
- Independent front suspension with air disc brakes and 60° wheel cut*
- Side radiator
- Allison MH 3000 six-speed automatic transmission
- 10,000-lb. hitch receiver and 6-point connector
- Four point, fully automatic hydraulic levelling jacks
- Aluminum wheels with 275/80R 22.5" tires
- 150-gallon fuel tank

COCKPIT

STANDARD

- 18" leather wrapped Smart steering wheel
- Audible turn signals*
- Adjustable pedals
- UltraLeather™ six-way power driver seat
- UltraLeather™ passenger seat
- Power sun visors

- Electric flush mount step-well cover
- 12V and 110V outlets in cockpit area
- Dash fans
- Air horns

OPTIONS

- UltraLeather™ passenger seat with power footrest
- UltraLeather™ extra-wide passenger seat with power six-way adjustment and foot rest
- Manual pull-down driver's side sun shade

INTERIOR

STANDARD

- Full 84" interior ceiling height
- Porcelain tile floor in entry way, kitchen and bathroom
- Sculpted carpeting with pad in living area and bedroom
- Solid wood raised panel cabinet doors
- Cedar lined rear wardrobe closet
- Hardwood Maple cabinetry
- Hardware with Brushed Nickel finish
- Day/night shades in living room
- Soft Touch vinyl ceiling
- Fluorescent ceiling lighting
- Halogen lights under cabinets in living room and bedroom
- Mood lighting above crown molding on top of all slide rooms
- Fabric easy-bed sofa with drawer
- Fabric easy-bed loveseat (standard on 40E passenger side only)

OPTIONS

- Hardwood Cherry or Natural Cherry cabinetry
- Tile runway in living area
- UltraLeather™ recliner with end table
- UltraLeather™ Euro recliner and ottoman with computer desk
- Two UltraLeather™ Euro recliners with coffee table in place of sofa (40G only)
- UltraLeather™ easy-bed sofa with drawer
- Fabric hide-a-bed sofa with air mattress
- UltraLeather™ hide-a-bed sofa with air mattress
- Fabric magic-bed sofa
- UltraLeather™ magic-bed sofa
- UltraLeather™ J-lounge
- UltraLeather™ loveseat (40E passenger side only)
- UltraLeather™ J-lounge loveseat (40E driver side only)

GALLEY

STANDARD

- 8-cubic-foot double door refrigerator with ice maker
- 3-burner high-output cooktop with drawers
- 30" Space Saver™ Stainless Steel convection microwave oven (1.7-cubic feet)
- Flush mounted two-piece range cover
- Kitchen pantry with adjustable shelves (not available with optional 12-cubic foot refrigerator)
- Full-extension drawer guides
- Corian® kitchen countertop with Stainless Steel sink
- Roll-out countertop extension (40B and 40H only)*
- Free-standing buffet dinette with two fixed and two folding chairs
- 12-volt lighting with dimmer switches
- Computer hook-up with phone jack in dinette area

OPTIONS

- 12-cubic foot side-by-side refrigerator with ice maker and raised panel inserts
- 12-cubic foot side-by-side Stainless Steel refrigerator with ice maker
- 3-burner high-output range with oven
- Booth dinette (not available on 40H)
- Round free-standing table with two fixed and two folding chairs
- Corian® sink
- Dishwasher drawer
- Central vacuum system

ENTERTAINMENT & ACCESSORIES

STANDARD

- 27" Sony™ flat screen television in overhead with remote control
 - 20" Sony™ flat screen television in bedroom
 - AM/FM dash radio with compact disc player
 - Sony™ DVD home theater system with recessed ceiling speakers
 - Color rear-vision monitor with one-way audio
 - 42" Sony™ Grand Wega LCD projection television in entertainment center (40G only)
 - 32" Sony™ LCD television in entertainment center (40H only)
- ### OPTIONS
- 40" Sony™ LCD television in front overhead

- Color side-vision camera system
- Digital satellite system (stationary, auto tracking)
- Digital satellite system (in-motion, fully automatic)
- High-definition, in-motion digital satellite system with Direct TV™ receiver
- Satellite-ready AM/FM radio with six disc CD changer
- Sirius™/Satellite AM/FM radio with six disc CD changer
- Compact Cobra® citizen's band radio with remote mount
- Pioneer™ navigation system with color back-up monitor
- Exterior entertainment center (includes LCD television, AM/FM radio with compact disc player and speakers)

BEDROOM/BATHROOM

STANDARD

- Pillow-top mattress
- 60" X 80" queen size bed (40B only)
- 70" x 80" king size bed
- Bedspread and pillows
- Black-out shades in bedroom
- Remote generator start in bedroom
- Washer/dryer prep
- Solid surface bath countertop with integrated sink

OPTIONS

- Vented combination washer/dryer
- Select Comfort™ air mattress
- One-piece fiberglass tub

SAFETY/CONVENIENCE

STANDARD

- Entry door with deadbolt lock
- Telephone jack
- Systems Control Center
- Smoke detector
- Fire extinguisher
- LPG detector
- Carbon monoxide detector
- Integral three-point seatbelts for the driver and passenger
- Deluxe acrylic lighted exterior grab handle

ELECTRICAL SYSTEMS

STANDARD

- Onan® RV Quietdiesel™ 8000 generator with automatic start (8000 watts)
- 2000-watt inverter with 100-amp charger and four 6-volt deep cycle house batteries

- Water pump switch in kitchen, bathroom and system compartment
- Door side patio receptacle
- 50-amp power cord reel
- Energy management system

PLUMBING & LP GAS SYSTEMS

STANDARD

- High-capacity water pump with full coach filtration system
- 10-gallon LP gas/electric water heater system with DSI
- LP quick-connect fitting for exterior grill*
- Fresh water fill indicator in exterior systems compartment
- One-piece fiberglass shower with glass enclosure
- Push-button electric flush china toilet
- Systems compartment with easy access to hook-ups
- Holding tank rinsing system
- Exterior shower

WINDOWS, DOORS & AWNINGS

STANDARD

- Radius dual pane windows with tinted safety glass
- Automatic electric patio awning
- Automatic electric front door awning

OPTIONS

- Driver side living room slide-out awning
- Bedroom window awning
- Remote keyless entry with baggage door lock

HEATING, VENTS & AIR CONDITIONING

STANDARD

- Dual 15,000 BTU roof air conditioners with heat pump
- One 20,000 BTU and one 30,000 BTU furnace
- Attic fan in kitchen with rain sensor and wall switch control
- Cold weather package

OPTIONS

- Solar panel (front air conditioner only)
- Attic fan in bathroom with wall switch control

*Available on units built after December 1, 2006

MANDALAY SPECIFICATIONS

MODEL	40B	40E	40F	40G	40H
WEIGHT RATING (LBS.)					
Freightliner XC Chassis-Cummins ISL Engine	400-HP	400-HP	400-HP	400-HP	400-HP
Gross Vehicle (GVWR)	34,320	34,320	34,320	34,320	34,320
Gross Combined (GCWR)	44,320	44,320	44,320	44,320	44,320
MEASUREMENTS					
Wheel Base	276"	276"	276"	276"	276"
Exterior Length <i>(without ladder)</i>	41'6"	41'6"	41'6"	41'6"	41'6"
Exterior Height <i>(with air conditioner)</i>	12'9"	12'9"	12'9"	12'9"	12'9"
Interior Height	84"	84"	84"	84"	84"
Awning Size	21'	21'	12'	21'	14'
TANK CAPACITIES					
Fuel <i>(gallons)</i>	150	150	150	150	150
LPG <i>(pounds)</i>	130	130	130	130	130
Fresh Water <i>(gallons)</i>	114	114	114	114	114
Waste Water <i>(gallons)</i>	57	57	57	57	57
Gray Water <i>(gallons)</i>	66	66	66	66	66
Water Heater <i>(gallons)</i>	10	10	10	10	10
Furnace <i>(BTUs)</i>	20,000/30,000	20,000/30,000	20,000/30,000	20,000/30,000	20,000/30,000

VEHICLE LOADING:

Every effort has been made to provide the greatest number of options for the recreation vehicle owner. Along with these choices comes the responsibility to manage the loads that are imposed by the choices so that they remain within the manufacturer's specified chassis weight limits. Do not overload the recreation vehicle.

DRY WEIGHTS:

Based on standard features; optional equipment not included. Net carrying capacity (NCC) determined by subtracting unloaded vehicle weight (UVW) from gross vehicle weight, (GVWR) and includes fluids, options, and cargo. Liquid capacities and weights are approximations only.

Product information, specifications, and photography in this brochure were as accurate as possible at time of printing. Photographs may contain some features that are optional on your vehicle. Since we continually strive to improve our products, actual products may differ. Prices and specifications are subject to change without notice. All capacities are approximate and dimensions are nominal. Some features or options may be different or unavailable in Canada.

WARNING:

This information is intended as a guide only. Weights of individual vehicles may vary. Consult your owner's manual for complete loading, weighing, and towing instructions.

IMPORTANT: Towing capacity may vary by chassis model, floorplan, options and loading of the vehicle. This may result in a towing capacity which is less than the maximum capacity of the hitch. Do not exceed the vehicle's Gross Combined Weight Rating (GCWR), or the hitch rating. A separate functioning brake system is required for any towed vehicle or trailer weighing more than 1,000 lbs. (450 KG) when fully loaded.



MANDALAY OWNER BENEFITS

In addition to owning one of the finest Class A diesel motorhomes in the industry, we offer Mandalay owners lots of extras. With the purchase of a new Mandalay, you will receive two complimentary jackets and caps from Mandalay Luxury Division. Plus, you are eligible to become a member of Mandalay Travel Club. It is a great way to meet other Mandalay Luxury Division owners, and have the opportunity to participate in unique group tours and attend rallies all over the country. To learn more about the Mandalay Travel Club, visit our website at:



www.mandalaycoach.com



P.O. Box 1486 • Elkhart, Indiana 46515-1486
Toll-free: 866-919-4444 • Fax: 574-522-4276
www.mandalaycoach.com

